

# SACRAMENTO PARKS PLAN 2040

## Parks and Community Enrichment Commission

### Draft Plan Review

May 02, 2024



**Parks Plan 2040 Overview**



**Inventory & Park System Analysis**



**New Policies, Key Directions, and Implementation**



**Draft Plan Public Feedback**



**Next Steps for Completion**



# Origins of the Parks Plan

## In 2018, YPCE adopted a 5-year Strategic Plan. It:

- Reorganized the Department of Parks and Recreation to add youth services.
- Called for an update to the 2005-2010 Sacramento Parks and Recreation Plan to refine standards and guidelines, especially to guide the City's and developers in providing parks.
- Called for diverse community engagement to inform policy updates.





# Parks Plan 2040



- The Parks Plan was developed through a multi-year, multi-phased planning effort that corresponded with the timing of the City's 2040 General Plan update.
- Grounded in public engagement, it provides detailed policy guidance for YPCE's services to guide annual work planning.

# Purpose of the Parks Plan



## The Parks Plan 2040:

- Updates the City's inventory of physical and programmatic assets.
- Identifies trends, needs, and level of service goals.
- Refines the policies, actions, and tools that YPCE will use to guide the provision of parks, recreation facilities, programs, events, and services.

# Parks Plan 2040 Overview



# Parks Plan 2040 Overview

## Chapters

- **1:** Introduction
- **2:** Planning Context
- **3:** Park Assets and Services
- **4:** Community Voices
- **5:** Park Access and Equity
- **6:** Level of Service and Needs
- **7:** Key Directions
- **8:** Implementation



# Parks Plan 2040 Overview

## Appendices

- A. Park and Facility Inventory
- B. Programs and Services Matrix
- C. Park Gap Analysis
- D. Policies
- E. Park Development and Renovation Guidelines
- F. Capital and Maintenance Cost Assumptions
- G. Project Prioritization Tool
- H. PPPG Project Request Form
- I. Funding Sources





# Parks Plan 2040 Advisory Guidance



# PCEC Updates and Guidance

Project Phase	Date	Meeting Description/Purpose
1	April 2019	RFP announcement; feedback on the outreach strategy
1 (SYC)	December 2020	Community Engagement Strategy and Preliminary Findings
2 (SYC)	October 2021	Engagement Findings and Needs Analysis; Summer Youth Outreach/Contest Awards
2	April 2022	CPRS Marketing and Communications Award of Excellence
3	February 2023	Level of Service and Key Directions
3	September 2023	Revised Key Directions and update on GP and Parks Plan
4	March 2024	Draft Parks Plan 2040 Public Release Announcement
4	May 2024	Parks Plan 2040 review and discussion

*Note: Two PCEC meetings were joint meetings with the Sacramento Youth Commission (SYC)*

# Community Engagement

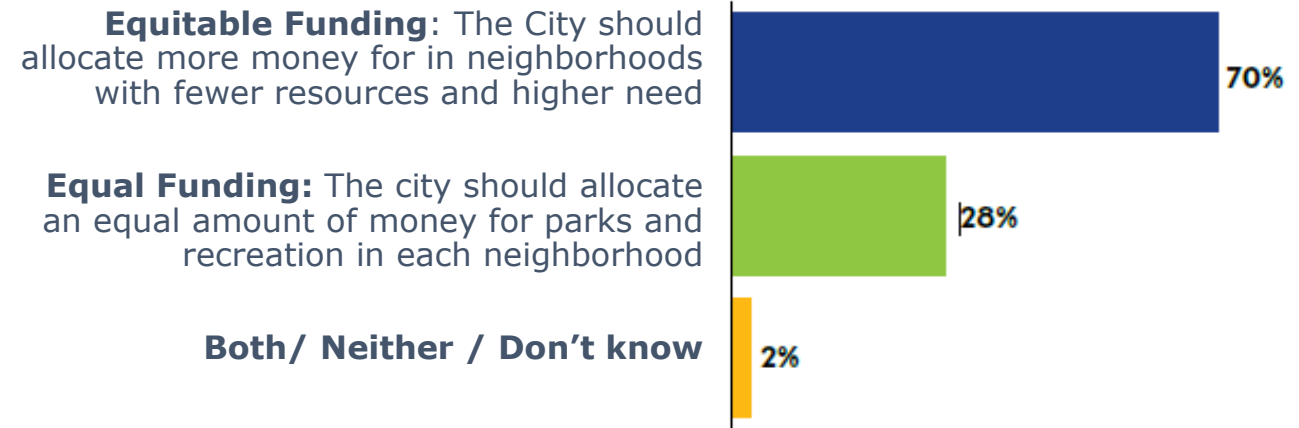
- Project Webpage
- Photo Contest
- Youth Drawing Activity
- Maptionnaire Survey
- Community Panels
- City Briefings, Presentations, and Pop-Up Events
- Community Connections
- Youth Art Expo and Contest
- Parks Prioritization Survey





# Park Prioritization Survey

- Statistically-valid
- Bilingual (English/Spanish)
- 600 residents interviewed
- 75 survey interviews per Council district
- Responses helped identify priority projects, programs, and improvements



# Coordination with Other Plans

## Concurrent Plans

- 2040 General Plan Update
- Sacramento Climate Action and Adaption Plan
- Vision Zero School Safety Plan
- Age Friendly Community Action Plan
- River District Specific Plan
- Urban Forest Plan
- Streets for People Active Transportation Plan

## Previous Plans

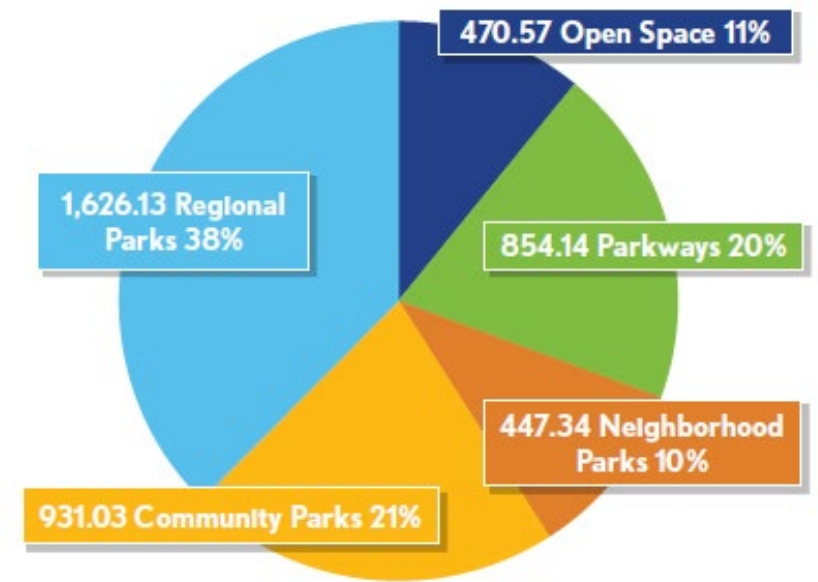
- 2005-2010 Park & Recreation Master Plan
- 2018-2023 YPCE Strategic Plan: Diverse Dynamic Together
- 2017 Citywide Youth Development Campaign
- 2018 Park Project Programming Guide (PPPG)

# Inventory and Park System Analysis



# Park Inventory Overview

- **Regional Parks** – 1,626.13 acres
- **Community Parks** – 928.45 acres
- **Neighborhood Parks** – 449.92 acres
- **Parkways** – 854.14 acres
- **Open Space** – 470.57 acres



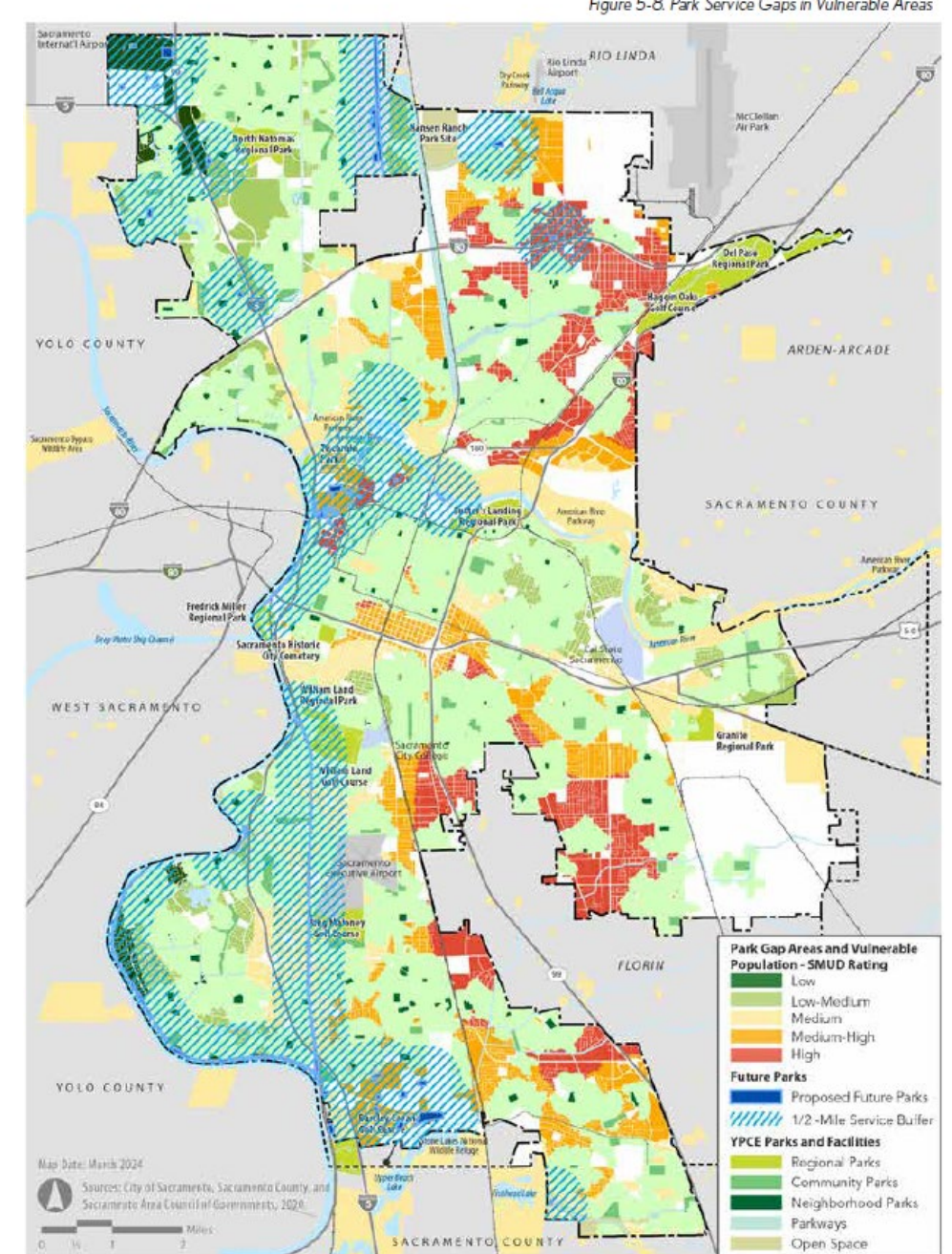
# Program Inventory

Recreation and Leisure	Youth Development & Engagement	Community Services & Resources
Aquatics	Academic Enrichment & Expanded	Access Leisure
Arts & Culture	Civic Engagement & Leadership	Adopt-a-Park / Cleanups
Enrichment & Learning	Early Learning	Emergency Response & Sheltering
Health, Wellness, & Fitness	Licensed Children	Facility and Field Rentals
Nature & Interpretive Programs (Includes camp Sacramento)	Out-of-School Programs	Healthy Food Initiatives
Special Events	Youth Workforce Development	Health/Wellbeing Information and Connections
Sports & Fitness (Youth, Teens & Adults)		Licensed Adult Care
Virtual Programs		Older Adults Services
		Outreach & Community Information
		Volunteerism

# 10 Minute Walk Analysis

## Park Service Gaps in Vulnerable Areas

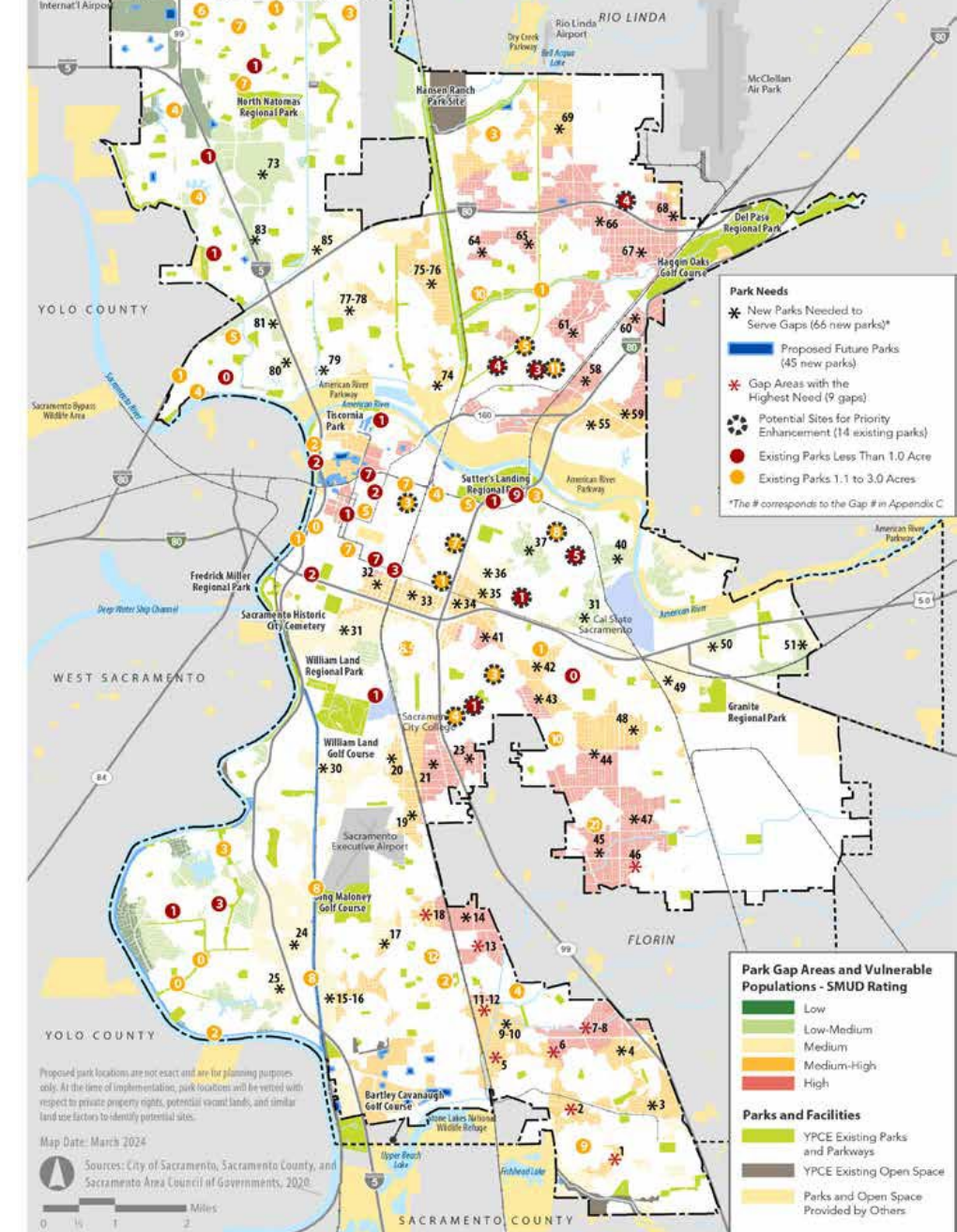
- 45 “future parks” are planned
- 66 new parks are needed
- 46 gaps have residents with high or medium-high vulnerability
- 9 gaps are high-density, diverse, and highly vulnerable, with no nearby parks or open space.





# Other Priority Enhancements

- Larger, well-developed parks are in newer areas.
- Analysis identified sites that were too small or underdeveloped to meet neighborhood needs.
- Potential priority sites for enhancement in Districts 2,3,4, and 5



# Level of Service

- Level of Service (LOS) is a ratio that helps measure whether the City has enough parkland and facilities.
- For parks, LOS represents the amount of park acreage for every 1,000 residents.
- For facilities, LOS is defined as 1 facility per number of people served.

# Parkland Level of Service

Park Classification	Existing LOS	Proposed LOS Standards	Net Future Need
Regional Parks	3.44	2.75	129.6 acres
Community Parks	1.96	2.00	348.4 acres
Neighborhood Parks	0.95	1.50	507.7 acres
Parkways	1.81	1.50	103.5 acres
Open Space	1.00	0.75	8.6 acres
<b>Total</b>	<b>9.16</b>	<b>8.50</b>	<b>1,097.5 acres</b>

1. The Existing LOS is based on 2024 acreage and the 2018 population (472,693 from General Plan).
2. The Proposed LOS standard is based on a 2040 population of 638,433 ( SACOG 2021).



# Facility Guidelines (LOS/Design)

## Significant increases:

- Neighborhood park amenities and facilities

## No additional facilities:

- Community Center
- Golf Course
- Community Pool

Key:

● ● ● ● = 51-100 new facilities

● ● ● = 31-50 new facilities

● ● = 11-30 new facilities

● = 1-10 new facilities

Per new minimum LOS guidelines, the below facility types are suggested to increase by 2040:	
Group Picnic Area	● ● ● ●
Playground / Play Area	● ● ● ●
Basketball Court (outdoors - full and half size)	● ● ●
Baseball / Softball	● ●
Fitness Equipment (count by pieces)	● ●
Pickleball Court	● ●
Soccer Field	● ●
Volleyball Court	● ●
Sports Court Variety (i.e., badminton, shuffleboard, bocce ball, etc.)	● ●
Dog Park	● ●
Water Mister / Spray Area	● ●
Community Garden	● ●
Cricket Field	●
Futsal Court	●
Tennis Court	●
Challenge Feature (i.e., climbing wall, zipline)	●
Dedicated Event Space	●
Bike Pump Track	●
Skate Park	●
Stage (Outdoors) / Amphitheater	●
River / Beach Access	●

# Policies, Key Directions, Implementation

# Key Directions



SAFETY & MAINTENANCE



QUALITY PARKS AND  
PROGRAMS



EQUITABLE ACCESS



HEALTH & WELLNESS



YOUTH WELLBEING



NATURE & TRAIL  
CONNECTIONS



RESILIENCY &  
SUSTAINABILITY



YPCE LEADERSHIP &  
COLLABORATION



PARK & PROGRAM  
INVESTMENT



## SAFETY & MAINTENANCE

- Adopt a new project prioritization tool and process.
- **Ensure adequate maintenance funds, staffing, and resources available for all parks.**
- Continue YPCE's Parks Ranger Program and community safety initiatives.





# QUALITY PARKS & PROGRAMS

- Adopt and implement the new park policies, guidelines, and standards.
- Develop minimum requirements for neighborhood parks.
- **Target investment in “deficient” sites.**
- Pursue CAPRA accreditation to demonstrate quality park and program management and services.



## EQUITABLE ACCESS

- **Provide parks within walking distance of homes in new residential areas.**
- **Triage park development and services in existing unserved “gaps.”**
- Adopt a new project prioritization tool and process.
- Ensure universal access to parks for all abilities.



# HEALTH & WELLNESS

- Increase the number of spray areas across the city.
- **Provide facilities, programs, and resources to support physical and mental health, fitness, and wellbeing.**
- Support cultural identity and diversity.



# YOUTH & WELLBEING

- Complete the Five-year Strategic Investment Plan to prioritize Measure L funding.
- Support implementation of the Strategic Investment Plan.
- Provide a range of recreation and enrichment programs for toddlers, children, youth, tweens, teens, and young adult.
- **Expand programs and services to support youth health, special needs, educational programs, childcare, youth development, workforce/volunteer training, and family support.**





# NATURE & TRAIL CONNECTIONS

- **Collaborate to improve trail connections.**
- Expand nature-based recreation facilities and programs.



# RESILIENCY & SUSTAINABILITY

- Promote urban cooling.
- Provide sustainable parks across the city.
- **Mitigate climate impacts and enhance the ecological function of parks.**



# YPCE LEADERSHIP & COLLABORATION

- Define YPCE's role and expand its leadership in City initiatives.
- Evaluate community centers leases to and operated by others in City parks.
- **Expand connections and communication with School Districts, partners, facility operators, community leaders and volunteers.**



# PARK & PROGRAM INVESTMENT

- Right-size the park system to support equitable investment.
- **Update Quimby and Park Impact Fee requirement.**
- Dedicating funding for park maintenance, operations, and asset repair/replacement.



# Implementation



## PPPG Update and Review of Opportunities

Update the PPPG to formalize the project review process.

Review project opportunities that have already been identified through the Parks Plan, the General Plan update, the Age-Friendly Community Action Plan, the Urban Forest Plan, the capital improvement plan, and the PPPG intake process. Compile opportunities into the PPPG database.



## New Project Intake

Solicit additional project proposals via the PPPG Project Request Form.

Receive, document, and integrate proposals into the PPPG database.



## Planning-Level Costing

Calculate the planning-level costs for project.

Identify any capital costs as well as operations costs and staffing impacts.

Consider the return on investment (ROI) in comparison to the urgency of implementing the project.



## Evaluation and Prioritization

Evaluate all opportunities and project proposals in PPPG database using the Project Prioritization Tool.

Create short-list of prioritized projects and initiatives.



## Funding Identification

Review existing and potential funding sources for project implementation.

Pursue additional funding opportunities, such as grants, partnerships, and donations. Update the City's PIF Nexus Study and Quimby Valuation. Strategize on voter-approved funding to support future projects.

Add funded projects to annual budgets and work plans for implementation.



## Strategic Planning and Monitoring

Complete the Youth Five-year Strategic Investment Plan to prioritize Measure L funding.

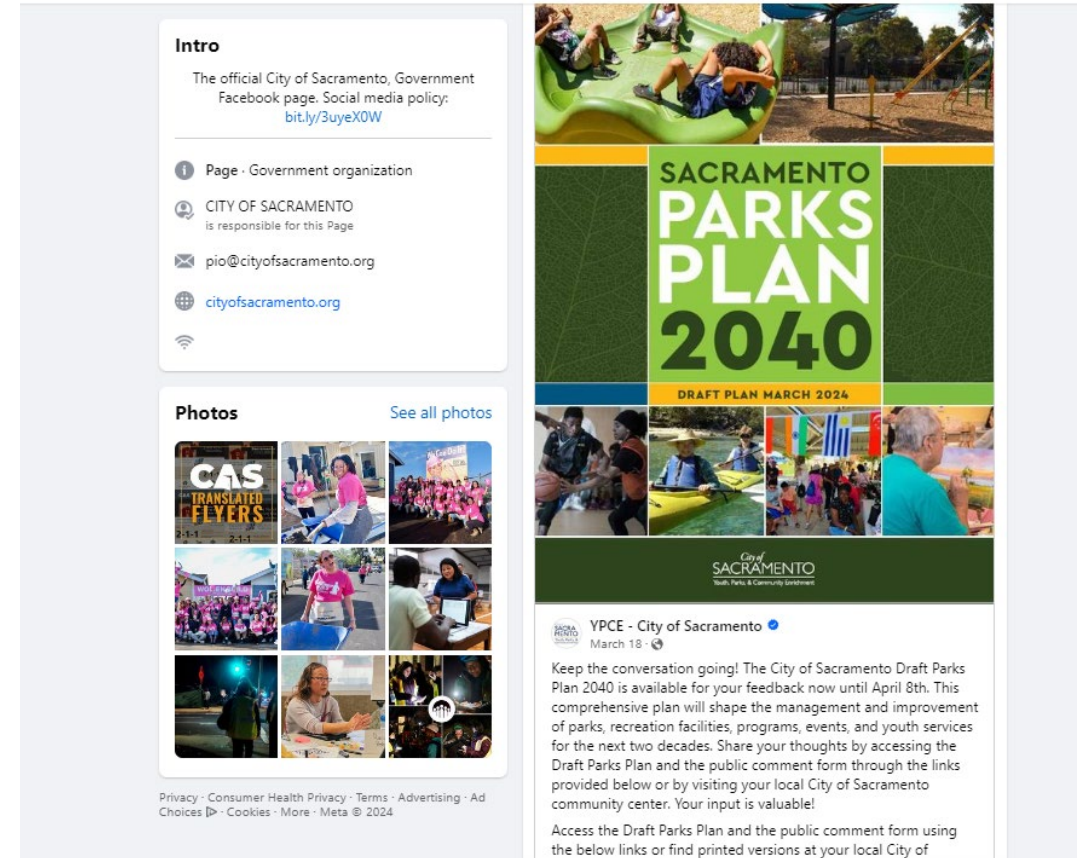
Update YPCE's Strategic Plan now and every five years to identify phasing and lead parties responsible for implementing new projects and initiatives.

Establish performance measures and set up a monitoring process to gauge YPCE's effectiveness in implementing the Key Directions, reporting on these within each budget cycle.

# Draft Plan Public Feedback

# Draft Plan Review Process

1. **Draft Plan and comment form** available in paper and online versions
2. **Presentations** at 10 community-organized Commission, Committee, and Council meetings to collect feedback
3. **Additional comments** collected via email



# Public Comment Form

- **Available from** March 8 to April 8, 2024 (4.5 weeks)
- **Online** Draft Plan and comment form made available on project website
- **Hard copy** Draft Plans, and comment forms provided at community center and library
- **Bilingual outreach** in English & Spanish
- **Multi-media access** via City website, email listserv, social media, local tv broadcast, and at events

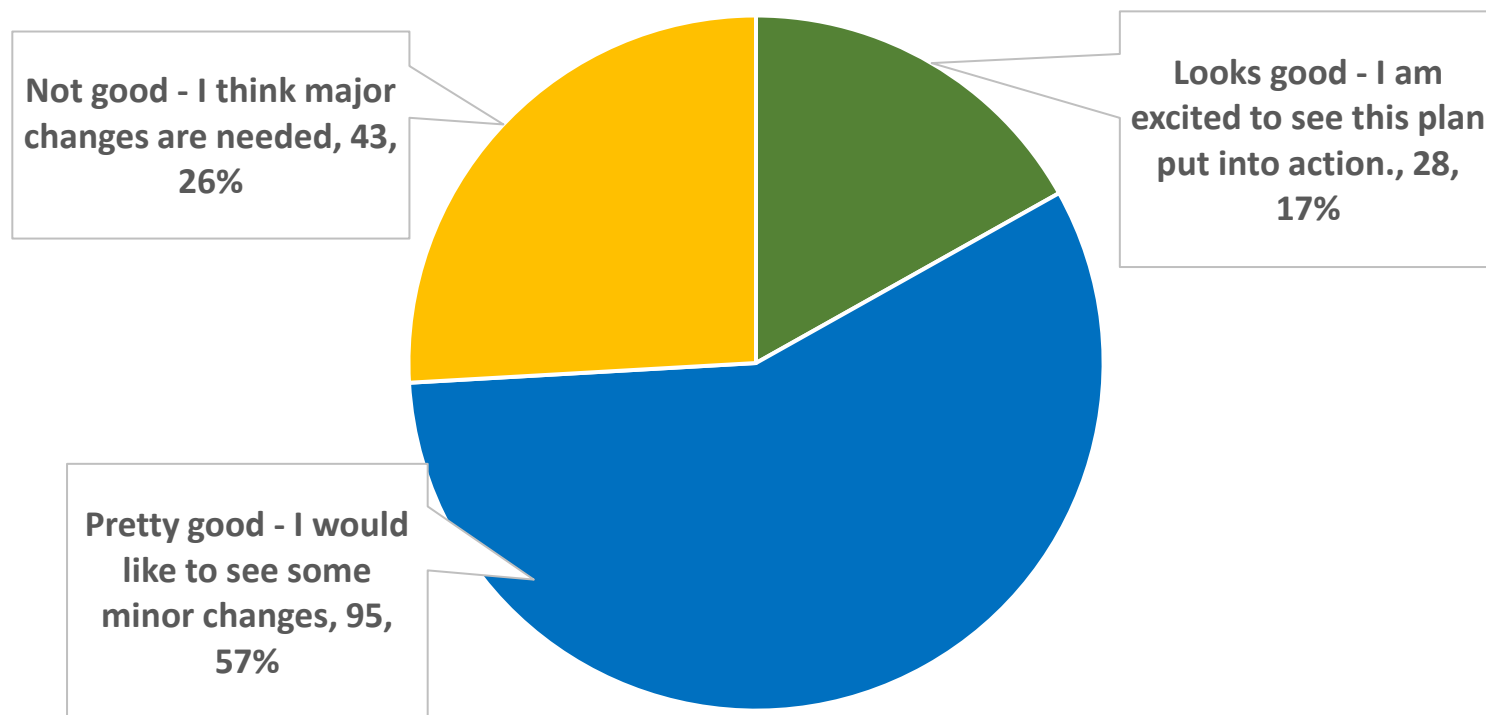


# Comment Form Feedback

- Goal was to make it available to as many people as possible to make comments
- 1,568 clicks on the link to the Draft Public Plan
- 904 clicks or QR code scans
- 208 responses to the online comment form with at least one response, some provided multiple comments
- There were no paper comments submitted

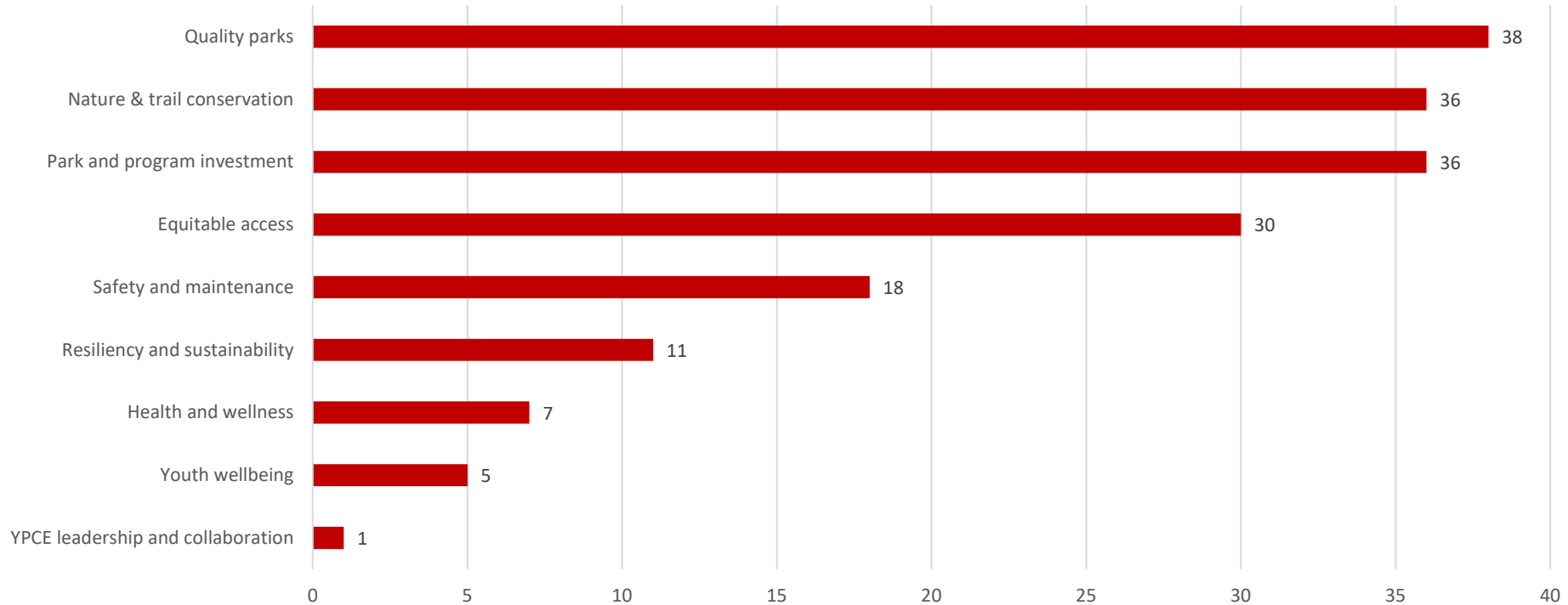
# Comment Form Feedback

## Overall Impression of Parks Plan 2040



# Comment Form Feedback

## Which of the Nine Key Directions is Most Important To You?



# Comment Form Feedback

- Nature, Disc Golf, and Dog Park were the top three most mentioned categories in online feedback. They made up 45% of the overall comments.

Categories	Number of Comments	Percent of Comments
Nature	74	19%
Disc Golf	59	15%
Dog Park	43	11%
Specific Edits	35	9%
Safety	31	8%
Funding	21	5%
Maintenance	18	5%
Active Transportation	12	3%
Partners	12	3%
Programming	10	3%
Fields	10	3%
Equity	8	2%
Food/Drink	8	2%
Reinvestment	7	2%

# Meeting Feedback

- **Implementation:** Several committee members noted support for the engagement process, Parks Plan and Key Directions but had questions about how City will implement the plan (e.g., equitable funding, new parks, and maintenance).
- **Coordination:** Various committees expressed appreciation of the recommended collaborations to support art/murals, active transportation, accessibility, climate resiliency, etc.
- **Document accessibility:** YPCE was advised to ensure an accessible version of the Draft Plan and Final Plan were posted.



# Emailed Comments

- **4 emails received**

- 1 on open space and natural resource protection
- 1 on General Plan/City planning consistency (City staff)
- 1 with varied comments in support of natural resource protection, equitable park access, family-friendly park experiences, corrections to the District 3 inventory.
- 1 from a neighborhood association asking to prioritize McClatchy Park, equitable investment and programming in Oak Park's parks, maintenance, and youth programs.

# How Comments are Integrated

- All comments treated equally; none are weighted.
- All are vetted in conjunction with previous findings (outreach and technical assessment, as well as advisory guidance).
- All are considered in terms of feasibility (how realistic).
- All are cross-checked to determine ripple effect in the plan. Some are noted in an addendum.
- Comments about various project priorities are logged for future YPCE use. (new project requests; not plan changes).

# Key Comments and Changes

**Nature:** While a greater level of open space and natural resource protection may be desired (and consistent with community feedback), YPCE is not positioned to lead City efforts for expanded open space acquisition and restoration.

A new paragraph will be added under Key Direction 6: Nature/Trail Connections. Similar clarifications will be made to open space policies and design guidelines.

**Designate natural areas for protection and best practices in maintenance and planning.**

Define and inventory designated natural areas, separate from undeveloped and developed parkland, for the purpose of protection and best practice maintenance planning. Explore approaches of designating natural areas via City Council through an environmental impact report, or conservation easement, or State Fish and Wildlife. YPCE will continue to seek out opportunities for nature appreciation and study, environmental education, restoration ecology, and land stewardship offered through public programs with the goal toward becoming a model of engaged environmental conservation and stewardship.

# Key Comments and Changes

- **Disc Golf:** The proposed minimum LOS guideline will be increased 1 per 94,500 residents and a future need of 2. This carries forward the existing level of service as the community grows.
- **Dog Park:** The design guidelines advise providing dog parks in regional and community parks, but not neighborhood parks.
- **Trails:** The Plan will clarify YPCE's role in providing parkways and in support Public Works' implementation of Streets for People: Active Transportation Plan.

# Key Comments and Changes

- **Climate Action Plan Coordination:** Guidelines on tree canopy and drought-tolerant landscaping are being modified to better align with the CAP.
- **Swimming Pools:** Text will clarify that all existing pools are needed. None will be closed.
- **Corrections/Clarifications/Photos:** Multiple formatting and text corrections will address errors, inconsistencies, or text where additional explanation was warranted. Updated photos were added.



# Items in a Plan Addendum

## **A Parks Plan addendum will acknowledge:**

- Map adjustments of the Sphere of Influence (SOI) boundary to show new annexations. (All policies in the Parks Plan are applicable to new annexations.)
- Inventory edits and park expansions
- Renaming of the Greater Land Park Community Plan area and the Pocket/Greenhaven Community Plan area

# Next Steps for Completion

# Next Steps

- PCEC comments and questions
- Integration of PCEC, Council, and Staff final revisions
- Final Draft Plan
- CEQA documentation (30-day public review)
- PCEC recommendation for adoption
- Council review and adoption
- Final document ADA accessibility and posting

# SACRAMENTO PARKS PLAN 2040

## Parks and Community Enrichment Commission

### Draft Plan Review

May 02, 2024