



APPROVED
BY THE CITY COUNCIL

APR 28 1987

OFFICE OF THE
CITY CLERK

16

DEPARTMENT OF
PUBLIC WORKS

ENGINEERING DIVISION

CITY OF SACRAMENTO
CALIFORNIA

CITY HALL
ROOM 300
915 I STREET
SACRAMENTO, CA
95814-2608

916-449-5307

THOMAS M. FINLEY
ENGINEERING DIVISION
MANAGER

April 28, 1987

CITY MANAGER'S OFFICE
RECEIVED
APR 22 1987

City Council
Sacramento, California

Honorable Members In Session:

SUBJECT: Northeast Corner of 82nd Street and Alpine Avenue - Approval
of Final Parcel Map

SUMMARY

It is requested that the City Council adopt a resolution approving the Final Parcel Map for the Northeast Corner of 82nd Street and Alpine Avenue.

BACKGROUND

On March 10, 1987, the City Council approved a tentative Parcel Map by adopting Resolution No. 87-166.

All conditions set forth in the staff subdivision report have been complied with, and all improvements have been installed and accepted by the Director of Public Works. The Final Parcel Map is now being presented for final approval.

FINANCIAL

All costs pertaining to the subdivision are being paid by the subdivider.

City Council
Northeast Corner of 82nd Street and
Alpine Avenue (P87-060)
April 28, 1987
Page 2

RECOMMENDATION

It is recommended that the attached resolution approving the Final Parcel Map be adopted.

Respectfully submitted,



THOMAS M. FINLEY
Engineering Division Manager

Recommendation Approved:



WALTER J. SLIPE
City Manager

Approved:



MELVIN H. JOHNSON
Director of Public Works

JL:vr
D3-01.F
04.1487.1

April 28, 1987
District No. 6

Attachment

RESOLUTION NO. 87-309

ADOPTED BY THE SACRAMENTO CITY COUNCIL ON DATE OF

APPROVED
BY THE CITY COUNCIL

APR 28 1987

OFFICE OF THE
CITY CLERK

APPROVING FINAL PARCEL MAP FOR
THE NORTHEAST CORNER OF 82ND STREET AND ALPINE AVENUE
(P87-060) (APN: 061-0071-021)

WHEREAS, THE COUNCIL OF THE CITY OF SACRAMENTO FINDS AND DETERMINES AS
FOLLOWS:

- A. The Final Parcel Map for the Northeast Corner of 82nd Street and Alpine Avenue, with provisions for its design and improvement, is consistent with the 1974 General Plan.
- B. The Final Parcel Map is in substantial compliance with the previously approved tentative map.

NOW, THEREFORE, BE IT RESOLVED BY THE COUNCIL OF THE CITY OF SACRAMENTO AS
FOLLOWS:

- 1. The Final Parcel Map for the Northeast Corner of 82nd Street and Alpine Avenue, be, and the same is hereby approved subject to the execution by all parties for that subdivision.
- 2. All offers of dedication shown on said map are hereby accepted.

MAYOR

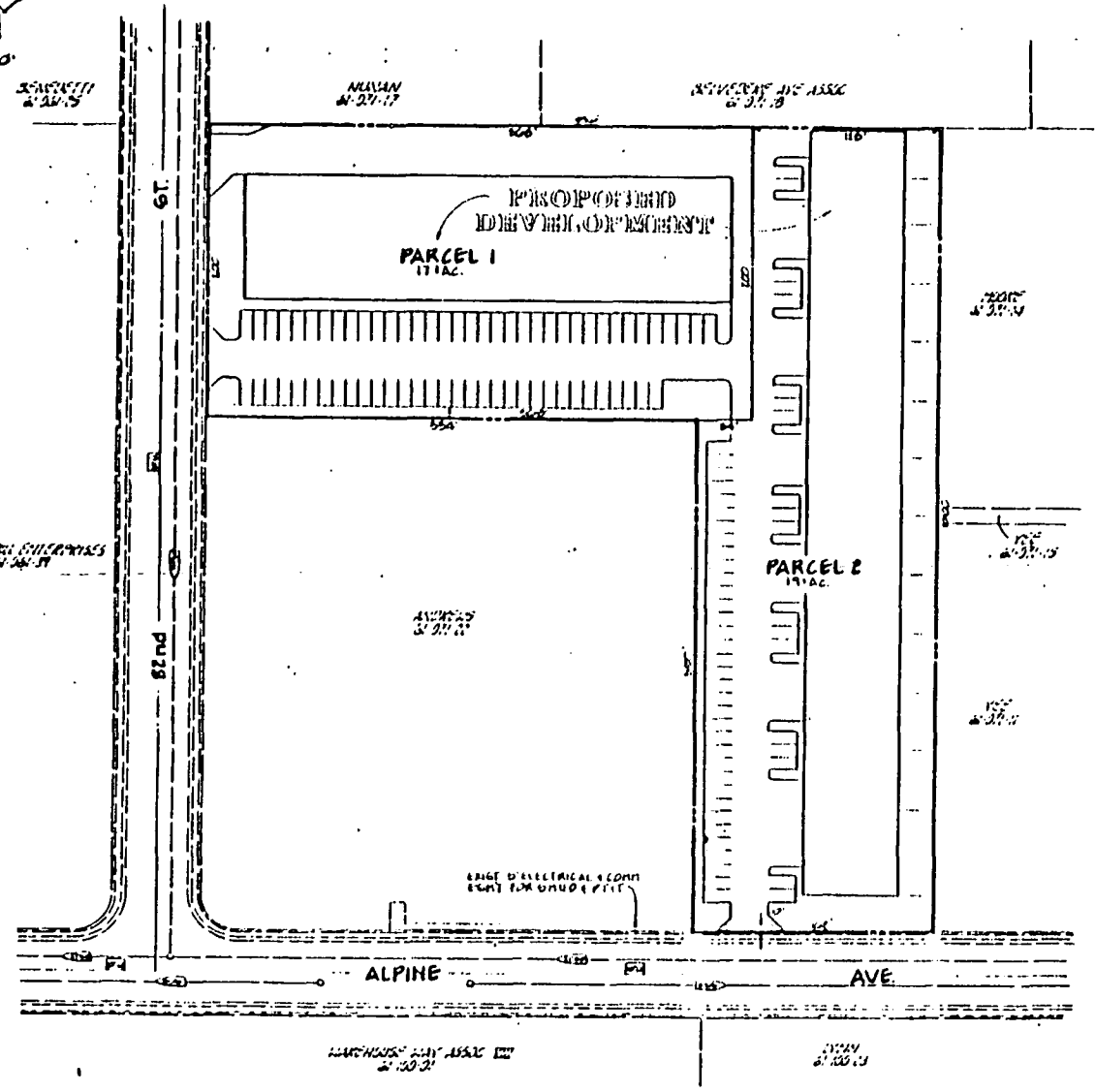
ATTEST:

CITY CLERK

16



SCALE: 1"=40'



VICINITY MAP
NO SCALE

PREPARED BY:
MORTON & PITALO, INC.
1150 J. ROBERTS BLVD
SACRAMENTO, CA 95811

DATE:
01-09-81

SCALE:
1" = 40'

PROJECT:
M-1112

STATE:
CALIFORNIA

CITY:
CITY OF SACRAMENTO

PLANNING:
PLANNING

SURVEYING:
SURVEYING

FILE NO.:
M-1112

DATE:
1-9-81

FIELD BOOK NO. _____ DATE _____		SCALE: _____ DRAWN BY: <u>MAP</u> CHECKED BY: _____	MORTON & PITALO, INC. CIVIL ENGINEERING PLANNING SURVEYING	APPROVED: _____ DATE: _____	TENTATIVE PARCEL MAP 82nd & ALPINE CITY OF SACRAMENTO	FILE NO. _____ DATE _____
------------------------------------	--	---	--	--------------------------------	--	------------------------------