



REPORT TO COUNCIL City of Sacramento

915 I Street, Sacramento, CA 95814-2604
[www. CityofSacramento.org](http://www.CityofSacramento.org)

Staff Report
November 18, 2008

**Honorable Mayor and
Members of the City Council**

Title: 2008 Parks and Recreation Programming Guide (PRPG)

Location/Council District: Citywide

Recommendation: Adopt a **Resolution** approving the 2008 Parks and Recreation Programming Guide (PRPG).

Contact: Gary Hyden, Supervising Landscape Architect, 808-1949

J.P. Tindell, Park Planning and Development Manager, 808-1955

Presenters: Gary Hyden, Supervising Landscape Architect, 808-1949

Department: Parks and Recreation

Division: Park Planning & Development Services

Organization No: 19001121

Description/Analysis

Issue: Park Development Impact Fees, Quimby In-Lieu Fees, Landscape and Lighting Assessment Funds, and Capital Grants are the major funding sources for park and recreation capital projects. Unfortunately, these resources are not sufficient to fund all the park capital projects identified by staff, the community, the Parks and Recreation Commission, or the City Council.

In October 2001, the City Council adopted a formal process to identify and rank unfunded park projects so that, as funding becomes available, projects can be developed in a timely and logical fashion. This identification and ranking process occurs on a biennial basis. The product of this process is the Parks and Recreation Programming Guide (PRPG).

Based on Scoring Criteria approved by City Council in October 2001, the PRPG identifies a total of 36 priority projects (3 within each of the City's 11 Community Planning Areas and 3 Regional/Citywide projects). The remaining projects are listed as opportunity projects. As with the priority projects, the opportunity projects are listed by Community Planning Area or identified as Citywide/Regional.

Development of the PRPG includes extensive community outreach to ensure that priorities identified are aligned with community needs. The PRPG process has been proven successful in identifying and prioritizing needs and aligning funding with those needs.

Policy Considerations: Providing parks and recreation facilities is consistent with the City's strategic plan to enhance livability in Sacramento's neighborhoods by expanding park, recreation, and trail facilities throughout the City.

Development of the PRPG is part of the Park Development Process stated in the *2005-2010 Parks and Recreation Master Plan*.

Committee/Commission Action: The Parks and Recreation Commission (PRC) supported approval of the 2008 Parks and Recreation Programming Guide on October 2, 2008.

Environmental Considerations:

California Environmental Quality Act (CEQA): This report concerns administrative activities that will not have a significant effect on the environment, and does not constitute a "project" as defined by the California Environmental Quality Act (CEQA) [CEQA Guidelines Sections 15061(b)(3); 15378(b)(2)].

Sustainability Considerations: The PRPG is consistent with the goals, policies, and targets of the City Sustainability Master Plan (SMP) by expanding and improving City parks, parkways, and open space, as well as helping to improve the health of residents by providing a source of exercise and a healthier urban environment.

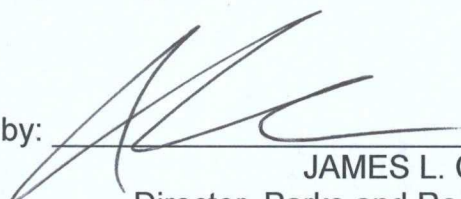
Rationale for Recommendation: The PRPG creates a comprehensive list and ranking of unfunded parks and recreation capital needs throughout the City. The process to develop the PRPG ensures that the City Council and the community are extensively involved in the identification and scoping of unfunded parks and recreation capital projects. As part of the overall Park Development Process, the PRPG establishes the priorities that assist staff in managing resources, production capacity, and operational and maintenance impacts.

Financial Considerations: Adoption of the 2008 PRPG does not result in any direct financial impact to the City. As part of the overall Park Development Process, it is a document designed to prioritize unfunded or under-funded capital projects.

Staff continuously pursues opportunities to fund the priority projects through a variety of funding sources. Staff also works to fund opportunity projects identified in the PRPG that are ideal for an identified funding source such as a grant program. As PRPG projects are funded, Capital Improvement Projects (CIPs) are created and those projects are removed from the PRPG.

Emerging Small Business Development (ESBD): Not applicable.

Respectfully Submitted by:


JAMES L. COMBS
Director, Parks and Recreation

Recommendation Approved:



RAY KERRIDGE
City Manager

Table of Contents:

Report	pg. 1
Attachments	
1 Background Information	pg. 4
2 Status of 2006 PRPG Projects	pg. 6
3 2008 PRPG Priority Projects Summary	pg. 21
4 PowerPoint Presentation	pg. 22
5 Resolution	pg. 26
6 Exhibit A –2008 PRPG	pg. 27

Attachment 1**Background Information**

In October 2001, the City Council adopted a process to develop a biennial Parks and Recreation Programming Guide (PRPG). In this process, the City strategically involves the City Council, the Parks and Recreation Commission, Parks and Recreation staff as well as the greater community to develop a comprehensive listing of the City's unfunded park and recreation capital needs. The guide evaluates and scores park and facility projects for funding and development prioritization. The City Council approved PRPG project scoring criteria categories include:

- Neighborhood/Community Acquisition
- Neighborhood/Community Development
- Neighborhood/Community Repair/Rehabilitation
- Community Facility
- Regional/Citywide Acquisition
- Regional/Citywide Development
- Regional/Citywide Repair/Rehabilitation

Throughout any year, staff works to identify funding for PRPG priority and other opportunity projects identified in the PRPG based on available funding sources. Once a project is funded as described in the PRPG, a detailed scope, schedule and budget are developed. The project is then added to the City's Capital Improvement Program and removed from the PRPG. When only a portion of a project is funded, the unfunded elements are then re-scoped, re-evaluated, and re-scored in the next PRPG. From the 2006 PRPG cycle, a total of 59 projects were either fully or partially funded (see Attachment 2).

The 2008 PRPG contains 347 projects, 209 of which are carried over from the 2006 PRPG; the remaining 138 are new projects developed during the current cycle. Based on the approved scoring criteria, projects are labeled "priority" projects or "opportunity" projects. The top scoring projects are called "priority" projects, with the remainder called "opportunity" projects. The PRPG identifies 3 priority projects in each of the City's 11 Community Planning Areas and 3 Citywide/Regional priority projects for a total of 36 priority projects (see Attachment 3).

The last PRPG was approved by City Council in October 2006. On February 18, 2008, the City Council approved the process and schedule for the development of the 2008 PRPG. Development of the PRPG includes extensive community outreach to ensure that all unfunded projects are identified. Project ideas were gathered from the community at Neighborhood Services meetings, a Redevelopment Advisory Committee meeting, and a Sacramento Youth Commission meeting.

An updated project list was sorted by Community Planning Area and then each project was scored based on City Council approved scoring criteria and deficiencies.

Preliminary scores and priorities were reviewed with the City Council and supported by the Parks and Recreation Commission.

Over the past year staff contacted all of the City's neighborhood associations requesting new project ideas and attended more than 30 community and neighborhood association meetings.

Attachment 2

Status of Opportunity and Priority Projects from the 2006 Parks & Recreation Programming Guide

Below details the status of the projects identified in the approved *2006 Parks and Recreation Programming Guide (PRPG)* and is organized first by Council District and then by Community Planning Area within each District.

PROJECT TYPES

- **OPPORTUNITY PROJECT:** Any project not ranked high enough to be a priority project; if a funding source is not found, the project will remain in the PRPG until a funding source is identified.
- **PRIORITY PROJECT:** All priority projects are listed from the *2006 PRPG*; if a funding source is not found, the project will remain in the PRPG until a funding source is identified.

FUNDING STATUS

- **PARTIALLY FUNDED:** A portion of the identified PRPG project has been funded. Unfunded project elements will be re-scoped, reevaluated, and re-scored for the *2008 PRPG*.
- **FULLY FUNDED:** The project has been fully funded and will not be incorporated into the *2008 PRPG*.

Council District: 1

Planning Area: 9

Priority Project

Ninos Park Improvements

Type: Development

Renovate the ball field. Add restroom, field lights, security lighting and more picnic areas.

Funding Status: Partially Funded

Unfunded: ball field renovation, addition of restroom, field lights, and more picnic areas.

Priority Project

Ninos Park Rehabilitation

Type: Repair and Rehabilitation

Resurface and/or re-stripe existing basketball court(s), replace existing drinking fountain, replace benches and picnic area.

Funding Status: Partially Funded

Unfunded: replace benches and picnic area

Priority Project

Northgate Park Rehabilitation

Type: Repair and Rehabilitation

Renovate tennis and basketball courts, existing signage, restrooms, and sand diggers.

Funding Status: Fully Funded

Council District: 1 *continued***Planning Area: 9** *continued***Gardenland Park Basketball Court Rehabilitation**

Type: Repair and Rehabilitation

Resurface and/or re-stripe existing basketball court(s).

Funding Status: Fully Funded

Oakbrook Park Site Development

Type: Development

Develop this 4.8-acre park site to include a tot lot and other amenities.

Funding Status: Fully Funded (on hold due to operations and maintenance budgetary issues)

South Natomas Community Center Enhancements

Type: Community Facility

Complete the food/concession area as part of Phase I of the community center. Add bike racks.

Funding Status: Fully Funded (DGS funded concession area, DPR funded racks)

Planning Area: 10***Priority Project*****Bike/Pedestrian Bridge @ River Plaza Drive
at the Natomas Main Drain**

Type: Development

Develop a bike/pedestrian bridge at River Plaza in South Natomas across the Main Drain channel.

Funding Status: Not Funded; DOT Project

Priority Project**Burberry Community Park Phase II**

Type: Development

Develop Phase II park elements such as: tennis courts, restrooms, and landscaping.

Funding Status: Fully Funded

Priority Project**North Natomas Regional Park**

Type: Development

Develop this park in conjunction with community partners consistent with the approved master plan.

Funding Status: Partially Funded

Unfunded: development of open space (Great Meadow), sports field, naturalistic area (with boardwalk), outdoor concert area, cultural garden, conservatory, botanic garden/pond, Park Center, Gardens Conference Center, skateboard park, kids' park, aquatic center, infrastructure and interior park roads, parking lots, multi-use trails surrounding the park, and park maintenance building.

Council District: 1 *continued***Planning Area: 10** *continued***Priority Project****Westlake Park Phase II**

Type: Development

Develop additional features including a playground, picnic shelter, water spray feature, restrooms, and bocce ball courts.

Funding Status: Partially Funded

*Unfunded: water spray feature, bocce ball courts.***Alder Park**

Type: Development

Develop park elements.

Funding Status: Fully Funded

California Lilac Park

Type: Development

Develop park elements.

Funding Status: Fully Funded

Cottonwood Park

Type: Development

Develop park elements.

Funding Status: Fully Funded

Elderberry Park Phase II

Type: Development

Develop Phase II park elements

Funding Status: Fully Funded

Harrier Park

Type: Development

Develop park elements.

Funding Status: Fully Funded

Hummingbird Park Phase II

Type: Development

Add a shade structure and landscaping.

Funding Status: Fully Funded; incorporated into first phase

Council District: 1 *continued***Planning Area: 10** *continued***North Natomas Park Nature Area Phase II**

Develop walkways.

Type: Development

Funding Status: Fully Funded; Utilities project

Peregrine Park Phase II

Add a shade structure.

Type: Development

Funding Status: Fully Funded

Quail Park

Develop park elements.

Type: Development

Funding Status: Fully Funded

Redtail Hawk Park

Add an additional play structure.

Type: Development

Funding Status: Fully Funded

Sparrow Park Land Acquisitions

Acquire full land area for park development.

Type: Land Acquisition

Funding Status: Fully Funded

Sundance Park Phase II

Develop Phase II park elements.

Type: Development

Funding Status: Fully Funded

Swainson's Hawk Park

Develop park elements.

Type: Development

Funding Status: Fully Funded (turnkey)

Council District: 1 *continued***Planning Area: 10** *continued***Westhampton Park Phase II**

Type: Development

Develop final park elements.

Funding Status: Fully Funded

Council District: 2**Planning Area: 8****Priority Project****Johnston Pool Rehabilitation**

Type: Repair and Rehabilitation

Replace underground plumbing and pool deck. Extend tubular steel fencing around the pool, install screen to hide pool equipment from view. Repaint the existing fencing and replace existing lifeguard stands and pool railings.

Funding Status: Not Funded

Priority Project**Robertson Park Rehabilitation**

Type: Repair and Rehabilitation

Develop a reuse plan for the existing tennis courts through a community process.

Funding Status: Fully Funded

Priority Project**Mims/Hagginwood Community Center Renovation Phase II**

Type: Repair and Rehabilitation

Renovation of this facility including the multi-purpose room.

Funding Status: Not Funded

Nuevo Park Phase II (formerly Del Paso Nuevo Park)

Type: Development

Develop Phase II of this neighborhood park including playground and picnic area.

Funding Status: Partially Funded

Unfunded: Develop Phase III of this neighborhood park including picnic area.

Council District: 2 *continued***Planning Area: 8** *continued***Robla Community Park Development**

Type: Development

Develop the next phase of this community park including additional picnic areas, lighting to the parking lot, a cover to the children's play area, a skatepark, and a walking/jogging trail.

Funding Status: Partially Funded

Unfunded: Develop a walking/jogging trail and vernal pool; add restroom, better lighting.

Winner's Park Renovation

Type: Repair and Rehabilitation

Repair existing facilities including irrigation system, restroom and park signage and re-master plan the park to make it a neighborhood park.

Funding Status: Fully Funded

Council District: 3**Planning Area: 1****Priority Project****McKinley Park Rehabilitation**

Type: Repair and Rehabilitation

Modify the bleachers, walkways and restrooms necessary to meet safety and ADA requirements.

Repair and expand the tennis building for staff and storage south of the existing tennis courts.

Replace the existing playground. Renovate the park's irrigation.

Funding Status: Partially Funded

Unfunded: modify restrooms to meet ADA requirements, repair and expand (if possible) the tennis building for staff and storage south of the existing tennis courts, and replace the existing playground. Renovation of irrigation folded into another project request.

Priority Project**R Street Park Plaza "Market Green"**

Type: Land Acquisition

Acquire property in the R Street Corridor.

Funding Status: Partially Funded; two small sites acquired

McKinley Park Rose Garden Arbors

Type: Repair and Rehabilitation

Install 8 block tubular steel arbors to replace the old rusted steel pipe arches. The arbors will be embellished with artistic metal roses to match the Victorian theme of the garden.

Funding Status: Fully Funded

Council District: 3 *continued***Planning Area: 1** *continued***Muir Park - Children's Park Phase II**

Type: Development

Add additional elements consistent with the updated master plan.

Funding Status: Fully Funded

Planning Area: 6**Priority Project****East Portal Park Jogging Trail**

Type: Community Facility

Create and implement a master plan to add a jogging trail around the perimeter of the park.

Funding Status: Partially Funded

Unfunded: Master Plan implementation.

Priority Project**Glenn Hall Pool Rehabilitation**

Type: Repair and Rehabilitation

Replace underground plumbing, pool deck, lifeguard stands, and pool railings.

Funding Status: Not Funded

Planning Area: 7**Priority Project****Ben Ali Neighborhood Park Acquisition**

Type: Land Acquisition

Acquire land in the Ben Ali community for a neighborhood park.

Funding Status: Not Funded

Priority Project**Ben Ali Neighborhood Tot Lot**

Type: Development

Add a tot lot/playground and park elements to Ben Ali Elementary School.

Funding Status: Not Funded

Priority Project**University Park Rehabilitation**

Type: Repair and Rehabilitation

Renovate existing benches; add a fountain, pathways; and install group picnic/barbeque area.

Funding Status: Fully Funded

Council District: 4**Planning Area: 1*****Priority Project*****Southside Park Renovation**

Type: Repair and Rehabilitation

Complete renovation of the lake and surrounding fencing, fishing piers, repaint the stage (facing T Street), repair tennis court lighting, resurface the basketball court and repair the shuffle board kit and small clubhouse, replace dead trees. Renovate lakeshore.

Funding Status: Partially Funded

Unfunded: complete renovation of island, repaint the stage (facing T Street), resurface the basketball court and repair the shuffle board kit and small clubhouse, replace dead trees.

Planning Area: 2***Priority Project*****Mangan Park Rehabilitation**

Type: Repair and Rehabilitation

Renovate restrooms. Resurface and/or re-stripe existing basketball court(s).

Funding Status: Not Funded

Priority Project**William Land Park Rehabilitation**

Type: Repair and Rehabilitation

Renovate all park restrooms, existing picnic areas, park signage, fencing, amphitheater and archways. Resurface and re-stripe the basketball court.

Funding Status: Not Funded

Planning Area: 3***Priority Project*****Reichmuth Park Rehabilitation**

Type: Repair and Rehabilitation

Master plan and develop the Nature Area for more use including a walking trail through a community process. Renovate water spray feature to current health, safety and ADA standards.

Funding Status: Partially Funded

Unfunded: master plan implementation, including renovation of the water spray feature to current health, safety and ADA standards.

Council District: 4 *continued***Planning Area: 11****Priority Project****Argonaut Park Development**

Type: Development

Develop master plan. Consider relocation of basketball courts. Add new picnic area, parking lot, lighting, walkways (baseball field to bleachers), 10 fitness stations, multi-use recreational trail with lighting, & two drinking fountains.

Funding Status: Partially Funded

Unfunded: develop per the master plan by relocating basketball courts and adding a new picnic area, parking lot, lighting, walkways (baseball field to bleachers), 10-station fitness areas, a multi-use recreational trail with lighting, & two drinking fountains.

Council Districts: 4, 7, & 8**Planning Area: 3****Priority Project****Pocket Area Tennis Courts**

Type: Development

Add additional tennis courts/facilities in the Pocket area, consider developing a multiple-tennis court facility at a larger park.

Funding Status: Fully Funded (Tennis courts added to Miller Park)

Council District: 5**Planning Area: 2****Priority Project****East Phillips Neighborhood Park**

Type: Land Acquisition

Acquire a small parcel to develop a neighborhood park to include a multi-use field and playground equipment.

Funding Status: Not Funded

Priority Project**Hollywood Park Improvements**

Type: Development

Develop park elements at Hollywood Park Elementary School and Leonardo DaVinci School.

Funding Status: Not Funded; not on City property

Council District: 5 *continued***Planning Area: 2** *continued***Sierra 2 Park Enhancements**

Type: Development

Add a dog park, a dog/people drinking fountain, benches, play stations for dogs, add fencing around the playground, plant additional trees, and add benches and picnic tables on the west side of the park.

Funding Status: Partially Funded

Unfunded: add a dog/people drinking fountain, benches, play stations for dogs, additional trees, and benches and picnic tables on the west side of the park.

Planning Area: 5**Priority Project****Fourth Avenue Park Basketball Court Rehabilitation**

Type: Repair and Rehabilitation

Resurface and/or re-stripe existing basketball court(s).

Funding Status: Not Funded

Priority Project**McClatchy Park Rehabilitation**

Type: Repair and Rehabilitation

Renovate the existing restrooms, irrigation system, tennis courts and basketball courts. Remove old wading pool. Prepare an assessment of the trees within the park.

Funding Status: Partially Funded

Unfunded: renovate irrigation system, tennis/basketball courts; prepare tree assessment.

McClatchy Pool Rehabilitation

Type: Repair and Rehabilitation

Remove the old wading pool from the pool site, replace turf in the pool area, lifeguard stands and pool railings.

Funding Status: Partially Funded

Unfunded: replace turf in the pool area, lifeguard stands, and pool railings.

Oak Park Improvements

Type: Development

Add new play areas, soccer fields and basketball courts.

Funding Status: Partially Funded

Unfunded: improve park with additional play areas and soccer fields..

Council District: 5 *continued***Planning Area: 11****Priority Project****Woodbine Park Rehabilitation**

Type: Repair and Rehabilitation

Renovate irrigation system, the park barbeque area and the existing park restrooms to current health, safety and ADA requirements.

Funding Status: Partially Funded

Unfunded: renovate irrigation system and the existing park restrooms to current health, safety and ADA requirements.

Council District: 6**Planning Area: 4****Priority Project****Sim Pool Rehabilitation**

Type: Repair and Rehabilitation

Replace underground plumbing, pool deck, lifeguard stands, and pool railings. Remove old wading pool.

Funding Status: Not Funded

Priority Project**Sim Community Center Expansion**

Type: Community Facility

Expand the community center through a community design process to include classrooms, additional office space, childcare, healthcare facilities and gymnasium.

Funding Status: Fully Funded; DGS project

Max Baer Park Enhancements

Type: Development

Add additional tables, barbeque, and an additional basketball court. Add a new mini skatepark, plus additional lighting and signage at this neighborhood park.

Funding Status: Partially Funded

Unfunded: develop additional lighting and signage.

Council District: 6 *continued***Planning Area: 4****Priority Project****Manor Recreation and Swim Club**

Type: Land Acquisition

Acquire and renovate the Manor Recreation and Swimming Club property by collaborating with the Sacramento Housing and Redevelopment Agency.

Funding Status: Not Funded

Planning Area: 5**Priority Project****Earl Warren Park Rehabilitation**

Type: Repair and Rehabilitation

Renovation/Re-use of the sand volleyball courts (consider neighborhood skatepark), repair the existing picnic area, irrigation system and turf, renovate the existing restrooms.

Funding Status: Fully Funded

Planning Area: 6**Priority Project****Oki Park Open Space Development**

Type: Development

Master plan this site and consider in the plan development of parking, tennis courts, multi-purpose trail, horseshoe pits, picnic area, tot lots and bocce courts.

Funding Status: Partially Funded; implementation of plan needed

Oki Park Improvements

Type: Development

Add an additional playground, bocce courts, information kiosk or board, walking path, drinking fountain, and shuffle board courts. Consider new play areas, soccer fields and basketball courts.

Funding Status: Fully Funded

Council District: 7**Planning Area: 3****Priority Project****Lewis Park Improvements**

Type: Development

Add a picnic/barbeque area, a water spray feature and more trees.

Funding Status: Partially Funded

Unfunded: water spray feature and more trees.

Council District: 8**Planning Area: 4****Shasta Park Master Plan**

Type: Development

Develop a master plan for this 19.6-acre community park site.

Funding Status: Fully Funded (Phase 1 development in process, Phase 2 on hold due to operations and maintenance budgetary issues)

Shasta Park Site Acquisition Completion

Type: Land Acquisition

Complete the acquisition of this community park site by purchasing the remaining parcels.

Funding Status: Fully Funded

Planning Area: 11***Priority Project*****Steve Jones Park Phase II**

Type: Development

Continue development of this park consistent with the approved master plan. Development of 4.5 acres to include: landscaping, detention basin and soccer field.

Funding Status: Fully Funded

Brookfield Triangle Landscaping

Type: Community Facility

Add landscaping to the "Brookfield Triangle" as Mack Rd. turns in to Meadowview to create a "neighborhood" gateway to the Meadowview Neighborhood.

Funding Status: Fully Funded

Hopkins Park Rehabilitation

Type: Repair and Rehabilitation

Remove old wading pool.

Funding Status: Fully Funded

CITYWIDE / REGIONAL

Priority Project**Delta Shores Regional Park Acquisition**

Type: Land Acquisition

Acquire approximately 140-acres for the Regional Park to develop regional park amenities through a community master plan process.

Funding Status: Not Funded

Matsui Waterfront Park Phase II (formerly Jibboom Street Park)

Type: Development

Develop Phase II of the Sacramento Riverfront Park.

Funding Status: Fully Funded

Granite Regional Park Enhancements

Type: Development

Develop a restroom in Phase I and/or Phase II area to improve usability. Add sports field lighting and a children's playground. Develop special elements to improve usage such as lights and a shade structure at the dog park. Develop a covered picnic area.

Funding Status: Partially Funded

Unfunded: develop a restroom in Phase I and/or Phase II area to improve usability; add a children's playground and bike racks to the entrance of the skatepark.

Natomas Baseball Regional Complex

Type: Development

Develop this property into a youth sports complex to include baseball, soccer, picnic areas, concession area, restrooms, and other amenities.

Funding Status: Partially Funded

Unfunded: working with nonprofit organization to have them develop the site.

Park Signage Replacement Program

Type: Repair and Rehabilitation

Replace old/outdated signage with new standard concrete monument signs (i.e., Bannon Creek Parkway, Natomas Oaks, Sand Cove).

Funding Status: Partially Funded; will incorporate updating all signage when other development occurs at each park site.

CITYWIDE / REGIONAL <i>continued</i>

William Land Regional Park Enhancements

Type: Development

Add additional picnic tables, trash cans and barbeques. Add a dog park at Land Park. Investigate and analyze converting interior roads to pedestrian and bicycle trails. Add an additional phase of the jogging trail at the panhandle.

Funding Status: Partially Funded

Unfunded: add a dog park, investigate and analyze converting interior roads to pedestrian and bicycle trails.

North Natomas Regional Park

Type: Development

Develop this park in conjunction with community partners consistent with the approved master plan.

Funding Status: Partially Funded

Unfunded: bicycle trails, boathouse cafe, Great Meadow, cultural garden, conservatory, botanic garden pond, park administration center, aquatics center, garden center, skate park, family center, and sports fields.

Attachment 3**PRIORITY PROJECTS SUMMARY****PLANNING AREA 1**
CENTRAL CITY

- River District Parks
- McKinley Park Rehabilitation
- R Street Corridor Parkland Acquisition

PLANNING AREA 2
LAND PARK

- East Phillips Neighborhood Park
- Neighborhood Parkland Acquisition
- Bret Harte Elementary School 4th R Community Garden

PLANNING AREA 3
POCKET

- Charlie Jensen Park Phase II
- Lewis Park Enhancements
- Dutra Park Lighting

PLANNING AREA 4
SOUTH SACRAMENTO

- Lemon Hill Area Community Garden Acquisition
- Manor Recreation and Swim Club
- Will C. Wood School Park Healthy Start

PLANNING AREA 5
EAST BROADWAY

- Billy Bean, Jr. Memorial Park Safety Implementation Plan
- McClatchy Park Safety Implementation Plan
- 21st Avenue Senior Center

PLANNING AREA 6
EAST SACRAMENTO

- 65th Street and Elder Creek Area Neighborhood Park
- Oki Park Restroom Rehabilitation
- College Glen Area Room/Building

PLANNING AREA 7
ARDEN/ARCADE

- Ben Ali Neighborhood Park Acquisition
- Auburn/Marconi Neighborhood Parkland Acquisition
- University Park Enhancements

PLANNING AREA 8
NORTH SACRAMENTO

- Hagginwood Park Safety Implementation Plan
- Johnston Park Safety Implementation Plan
- Strawberry Manor Park Safety Implementation Plan

PLANNING AREA 9
SOUTH NATOMAS

- Gardenland Park Safety Implementation Plan
- Ninos Park Safety Implementation Plan
- Natomas Oaks Park Environmental Education Center

PLANNING AREA 10
NORTH NATOMAS

- Tanzanite Community Park Improvements
- Egret Park Master Plan Revision
- Valley Oak Park Phase II

PLANNING AREA 11
AIRPORT/MEADOWVIEW

- Chorley Park Safety Implementation Plan
- Martin Luther King, Jr. Park Safety Implementation Plan
- Meadowview Park Enhancements

CITYWIDE/REGIONAL PROJECTS

- American River Parkway Land Acquisition
- Delta Shores Regional Park
- Regional Sports Complexes

Attachment 4

PowerPoint Presentation

2008 PARKS AND RECREATION PROGRAMMING GUIDE



Presented by:
C. Gary Hyden
Supervising Landscape Architect
Department of Parks and Recreation
November 18, 2008



PURPOSE OF PRPG



- Provide a comprehensive list and ranking of the City's unfunded park and recreation capital needs for funding and development prioritization.

PRPG PROCESS



- October 2001, City Council adopted process for creation of biennial PRPG
- Process involves the public, City staff, Parks and Recreation Commission and City Council
- Projects are categorized and ranked using scoring criteria approved by City Council

PRPG PROCESS *(Continued)*



- Two (2) categories of projects – Priority and Opportunity
- Top scoring projects are “Priority” projects (up to 15 points)
- Remaining projects are “Opportunity” projects

PRPG PROCESS (Continued)



- Total of 36 Priority projects are identified including:
 - 3 Priority projects in each of 11 Community Planning Areas.
 - 3 Priority Citywide/Regional projects

2006 PRPG STATUS



- 59 projects from the 2006 PRPG that were either fully or partially funded
- Of the 59, 22 were Priority projects

2008 PRPG PROJECTS

- 2008 PRPG contains 347 total projects including:
 - 138 new projects
 - 209 carried over from 2006 PRPG



CONCLUSION

- PRPG is a valuable tool for the City in establishing project priorities, managing resources, calculating production capacity and controlling operational/maintenance impacts
- Staff recommends City Council adopt a resolution approving 2008 Parks and Recreation Programming Guide



RESOLUTION NO. 2008-

Adopted by the Sacramento City Council

November 18, 2008

**APPROVING THE 2008 PARKS AND RECREATION PROGRAMMING
GUIDE (PRPG)**

BACKGROUND

- A. In 2001, the City Council adopted a process to develop a PRPG.
- B. The City of Sacramento's PRPG is designed to identify, evaluate, and prioritize unfunded or under-funded park and recreation capital projects throughout Sacramento.
- C. PRPG projects are scored and prioritized per the City Council approved PRPG process.
- D. The adopted *2005-2010 Parks and Recreation Master Plan* sets service level goals for both park and recreation acreage and facility needs within the City of Sacramento. The service level goals, population projections from the City's Planning Department and the City's updated park and recreation facility inventory have been used to develop updated deficiency calculations for the 2008 PRPG.
- E. On February 19, 2008, the City Council approved the process and criteria for the development of the 2008 PRPG.

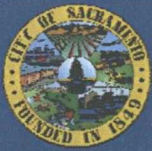
**BASED ON THE FACTS SET FORTH IN THE BACKGROUND, THE CITY COUNCIL
RESOLVES AS FOLLOWS:**

Section 1. The 2008 PRPG: Parks and Recreation Programming Guide, attached as Exhibit A, is approved.

Table of Contents:

Exhibit A –2008 PRPG

Exhibit A: 2008 PRPG: Parks and Recreation Programming Guide



City of Sacramento Department of Parks and Recreation

Planning Area 8, North Sacramento
Five Star Park
Before



2008 PRPG

PARKS AND RECREATION PROGRAMMING GUIDE



*Optimize the
Experience
of Living!*



Five Star Park
After



CITY OF SACRAMENTO



City Council

Heather Fargo, Mayor
 Ray Tretheway, District 1
 Sandy Sheedy, District 2
 Steve Cohn, District 3
 Robert King Fong, Vice Mayor, District 4
 Lauren Hammond, District 5
 Kevin McCarty, District 6
 Robbie Waters, District 7
 Bonnie Pannell, District 8

Parks and Recreation Commission

Cindy Cooke, Chair, Planning Area 2
 George Raya, Planning Area 1
 Patrick Lynn, Planning Area 3
 Dave Tamayo, Planning Area 4
 Vacant, Planning Area 5
 John Deglow, Planning Area 6
 Bruce Pomer, Planning Area 7
 Leo Lujan, Planning Area 8
 Deidre Price, Planning Area 9
 Sheila DeBlonk, Planning Area 10
 Virginia Guadiana, Planning Area 11

Neighborhood Services Department

Vincene Jones, Director
 Liz Brenner, Area Manager
 Derrick Lim, Area Manager

Department of Parks and Recreation

James L. Combs, Director
 Alan Boyd, Interim Operations Manager
 Lori Harder, Support Services Manager
 J.P. Tindell, Park Planning & Development Manager
 Bob Fleming, Park Operations Manager
 Sylvia Fort, Recreation Division Manager
 Dave Mitchell, Recreation Division Manager
 Alan Tomiyama, Recreation Division Manager

Parks and Recreation Programming Guide Staff Team

PROJECT MANAGERS

Gary Hyden, Supervising Landscape Architect
 Kim Swaback, Administrative Analyst

SUPPORT STAFF

Dana Allen, Senior Planner
 Alicia Bramble, Student Intern
 Denise Curl, Administrative Analyst
 Mary de Beauvieres, Principal Planner
 Jay Proffitt, Program Specialist

A very special thanks goes to the citizens and community activists within the City of Sacramento who devoted countless hours to the preparation of this document.

For questions or comments, please contact:
 J.P. Tindell, Park Planning and Development Manager
 916-808-1955

iptindell@cityofsacramento.org

or

Gary Hyden, Supervising Landscape Architect
 916-808-1949

ghyden@cityofsacramento.org

This document is available on the City of Sacramento's website:
http://www.cityofsacramento.org/webtech/streaming_video/live_council_meetings.htm under Future and Archived Meetings and is on file in hard copy in the Office of the City Clerk at 915 I Street, Historic Building, First Floor.



TABLE OF CONTENTS



1.	Background	1
2.	Priority Projects Summary	3
3.	Analysis	5
4.	Projects' Descriptions and Scores	8
5.	Scoring and Prioritization Process	56
	• PRPG Development and Scoring Criteria Summary from the <i>City of Sacramento Parks and Recreation Master Plan 2005- 2010</i>	57
	• 2008 PRPG New Project Request Form	59
	• Needs Analysis by Community Planning Area	60
6.	Attachments	
	• PRPG Glossary	73
	• Status of Opportunity and Priority Projects from the <i>2006 Parks and Recreation Programming Guide</i>	78
	• City Council Resolution 2008-093	93
	• Timeline	95
	• Approved PRPG Project Category Scoring Criteria	96



BACKGROUND

*Planning Area 5, East Broadway
Granite Regional Park
Dog Park
Before*



*Granite Regional Park
Dog Park
After*

BACKGROUND

In 2001, the City Council adopted the process for developing a Parks and Recreation Programming Guide (PRPG). The PRPG biennially identifies and establishes priorities for future unfunded parks and recreation capital projects throughout the City.

The PRPG process has proven successful since 2001 in providing the City Council, Parks and Recreation Commission, and greater community with a comprehensive inventory of the unfunded parks and recreation capital needs across the City of Sacramento. Unfunded land acquisition, development, community facility, repair, rehabilitation, and regional projects are identified in all of the City's neighborhoods through an extensive outreach process. This ensures that the needs across the City of Sacramento are being assessed on a biennial basis.

The PRPG process allows staff to identify and prioritize needs, align funding with those needs to create realistic expectations, and deliver projects within a reasonable timeframe. The City Council approved scoring criteria are used to evaluate and prioritize the unfunded projects identified. Projects are separated into seven categories and ranked within each of the City's 11 Community Planning Areas. The three top scoring projects in each of the Planning Areas are identified as priority projects. In addition, three priority regional projects are identified based on a citywide assessment of regional park and recreation facility needs. Each PRPG generates a total of 36 priority projects. Annually, City staff works with available resources to fund priority projects with existing City funding sources such as the General Fund, Community Development Block Grant Fund (CDBG), Tax Increment Fund (TI), Quimby In-Lieu Fees, Park Development Impact Fees (PIF) and capital grant opportunities. Staff also works to fund the remaining opportunity projects. Opportunity projects may not be top scoring PRPG projects, but may be ideal for funding as it may become available, such as CDBG funds. As PRPG projects are funded, capital improvement projects (CIPs) are created and those projects are removed from the PRPG.

When the City Council approved the *Parks and Recreation Master Plan 2005-2010*, it was determined that acreage and facility deficiencies should be a part of the PRPG process. This change allows the City Council to get a more frequent and accurate measure of the parks and recreation needs in the City.

The 2008 PRPG timeline and scoring criteria were approved by City Council on February 19, 2008, in Resolution 2008-093. The 2008 PRPG team provided six outreach meetings to all of the City's Neighborhood Service Areas, the Del Paso Heights Redevelopment Area Committee (RAC), and the Youth Commission. As a result of this outreach, over 140 new project requests were gathered and the 2008 PRPG contains nearly 360 projects.



PRIORITY PROJECTS SUMMARY

*Planning Area 4, South Sacramento
North Laguna Walking Trail
Before*



*North Laguna Walking Trail
After*

PRIORITY PROJECTS

SUMMARY

PLANNING AREA 1

CENTRAL CITY

- River District Parks
- McKinley Park Rehabilitation
- R Street Corridor Parkland Acquisition

PLANNING AREA 2

LAND PARK

- East Phillips Neighborhood Park
- Neighborhood Parkland Acquisition
- Bret Harte Elementary School 4th R Community Garden

PLANNING AREA 3

POCKET

- Charlie Jensen Park Phase II
- Lewis Park Enhancements
- Dutra Park Lighting

PLANNING AREA 4

SOUTH SACRAMENTO

- Lemon Hill Area Community Garden Acquisition
- Manor Recreation and Swim Club
- Will C. Wood School Park Healthy Start

PLANNING AREA 5

EAST BROADWAY

- Billy Bean, Jr. Memorial Park Safety Implementation Plan
- McClatchy Park Safety Implementation Plan
- 21st Avenue Senior Center

PLANNING AREA 6

EAST SACRAMENTO

- 65th Street and Elder Creek Area Neighborhood Park
- Oki Park Restroom Rehabilitation
- College Glen Area Room/Building

PLANNING AREA 7

ARDEN/ARCADE

- Ben Ali Neighborhood Park Acquisition
- Auburn/Marconi Neighborhood Parkland Acquisition
- University Park Enhancements

PLANNING AREA 8

NORTH SACRAMENTO

- Hagginwood Park Safety Implementation Plan
- Johnston Park Safety Implementation Plan
- Strawberry Manor Park Safety Implementation Plan

PLANNING AREA 9

SOUTH NATOMAS

- Gardenland Park Safety Implementation Plan
- Ninos Park Safety Implementation Plan
- Natomas Oaks Park Environmental Education Center

PLANNING AREA 10

NORTH NATOMAS

- Tanzanite Community Park Improvements
- Egret Park Master Plan Revision
- Valley Oak Park Phase II

PLANNING AREA 11

AIRPORT/MEADOWVIEW

- Chorley Park Safety Implementation Plan
- Martin Luther King, Jr. Park Safety Implementation Plan
- Meadowview Park Enhancements

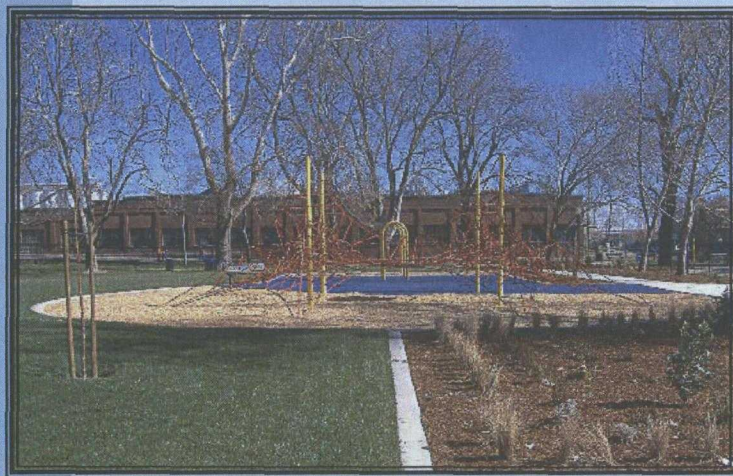
CITYWIDE/REGIONAL PROJECTS

- American River Parkway Land Acquisition
- Delta Shores Regional Park
- Regional Sports Complexes



ANALYSIS

*Planning Area I, Central City
Muir Children's Park
Before*



*Muir Children's Park
After*

ANALYSIS

When reviewing the 2006 PRPG and preparing for the 2008 PRPG, staff identified a number of requests that were for projects not on park land (i.e., school district land or property owned by other city departments) and projects not park, recreation, or community facility related. These projects were not included in the 2008 PRPG, but, when applicable, were passed on to the appropriate city department. Other projects in the 2006 PRPG not included in the 2008 PRPG were 35 fully funded projects from the 2006 PRPG. The unfunded portions of the partially funded 2006 PRPG projects have been included in the 2008 PRPG.

Based on a review of the 2008 PRPG, staff has identified a number of trends and issues for the next two year period from the nearly 360 projects in the 2008 PRPG. Over 140 projects were submitted.

Increase in Repair and Rehabilitation Projects

In 2008, Repair and Rehabilitation projects increased by 6%; this may be due to the parks and recreation system's aging infrastructure needing to be repaired or replaced. Thirty-nine percent of the accepted 2008 PRPG projects are Repair and Rehabilitation projects. However, the majority of PRPG projects (40%) are still development projects.

Increase in Requests for Community Gardens

Nearly 10% of the new project requests were for community gardens. Community gardens help to promote healthy habits, nutrition education, and responsible stewardship of land resources. The City's community garden program has existed for three years, but has recently received attention from the press. The increase in requests for this program could be because of the positive local and national press received for the program, its emphasis on food education and community involvement, the additional beautification it provides to its neighborhoods, or the increase in food prices.

Revision to Project Request Form Needed

The form needs to be revised to make it more "user friendly" and to help the scoring team get the information needed to adequately rate project requests. (Several projects did not have clear descriptions which may have lowered the project's score.) To also aid in making this an easier process for our citizens, the scoring criteria should be posted for the community and distributed during the outreach process so that it is easier for constituents to gear project proposals towards the best score.

Revision to Needs Analysis

As proposed for the 2030 General Plan, the needs analysis has three new items: neighborhood centers (clubhouses), one per neighborhood; trails, 0.5 linear miles per 1,000 population; and nature interpretation centers, two per region. Using the County Assessor records, the *Parks and Recreation Master Plan 2005-2010* update has revised the acreage. Most modifications are due to the addition or subtraction of parkland, and/or differences between gross and net acreages. In addition, an in depth survey of public schools identified additional sports fields, courts, and other recreational amenities to add to the inventory and the needs analysis.

Revision to Definitions Needed

It was suggested that the definition of Community Facility projects include not only new building projects, but should also include what the Department of General Services defines as community facilities. The category would then include repairs or rehabilitation to existing facilities, such as restrooms, community buildings, art installations, or buildings. A clear distinction also needs to be drawn between the Development and Repair and Rehabilitation categories; it is often unclear when to define an amenity as an “enhancement” or “improvement” to an existing park/facility. The current scoring criteria would need to be revised to accommodate these suggestions.

Revision to Scoring Criteria Needed

During the scoring process, staff noted that some criteria needed to be revised and others needed to be added. A full review of the current criteria will need to occur prior to the development of the 2010 PRPG. The current criteria are weighted towards including certain types of recreation (such as basketball, soccer, or baseball) in our park system; this leaves small public places, capital improvements to our recreational programming, planning projects, assessment projects, and parkways at a disadvantage. With the development of the Small Public Places concept and associated policies, a new scoring category will need to be added. It is also suggested that, when rating the park acreage need, only developed acres, not developed and undeveloped, should count toward the acreage criterion. It is also suggested that the scoring sheets have common criteria across categories.

Due to a legal mandate, gender equity was incorporated into the existing scoring criteria as a legal mandate. As more clarification about the implementation of the mandate materializes, it will need to be integrated into the 2010 PRPG criteria as a separate scoring criterion.

Another recent development is the approval of the City’s Sustainability Master Plan and the Department of Parks and Recreation Sustainability Plan. In order to incorporate that document, the scoring criteria for the 2010 PRPG will need to include a sustainability, passive recreation, and/or naturalized landscaping criterion.

Addition of 2008 Parks and Recreation Safety Implementation Plan Projects

In 2006, the Department of Parks and Recreation completed a public survey which indicated between 2003 and 2006 that there was a decline in resident’s perception of safety in City parks. Staff developed the Parks and Recreation Safety Implementation Plan with the goal to create positive, clean, vibrant, and safe parks and recreation facilities. The plan was adopted in January 2008 and staff was directed to report back with an action plan for parks in need of an immediate plan. In April, staff returned with nine park safety action plans for the following parks: Hagginwood, Johnston, Strawberry Manor, Ninos, Gardenland, Bill Bean, Jr. Memorial, McClatchy, Chorley, and Martin Luther King, Jr. In Resolution 2008-217, City Council approved the action plans and appropriated funding for the projects. The unfunded portions of these projects have been included in the 2008 PRPG.



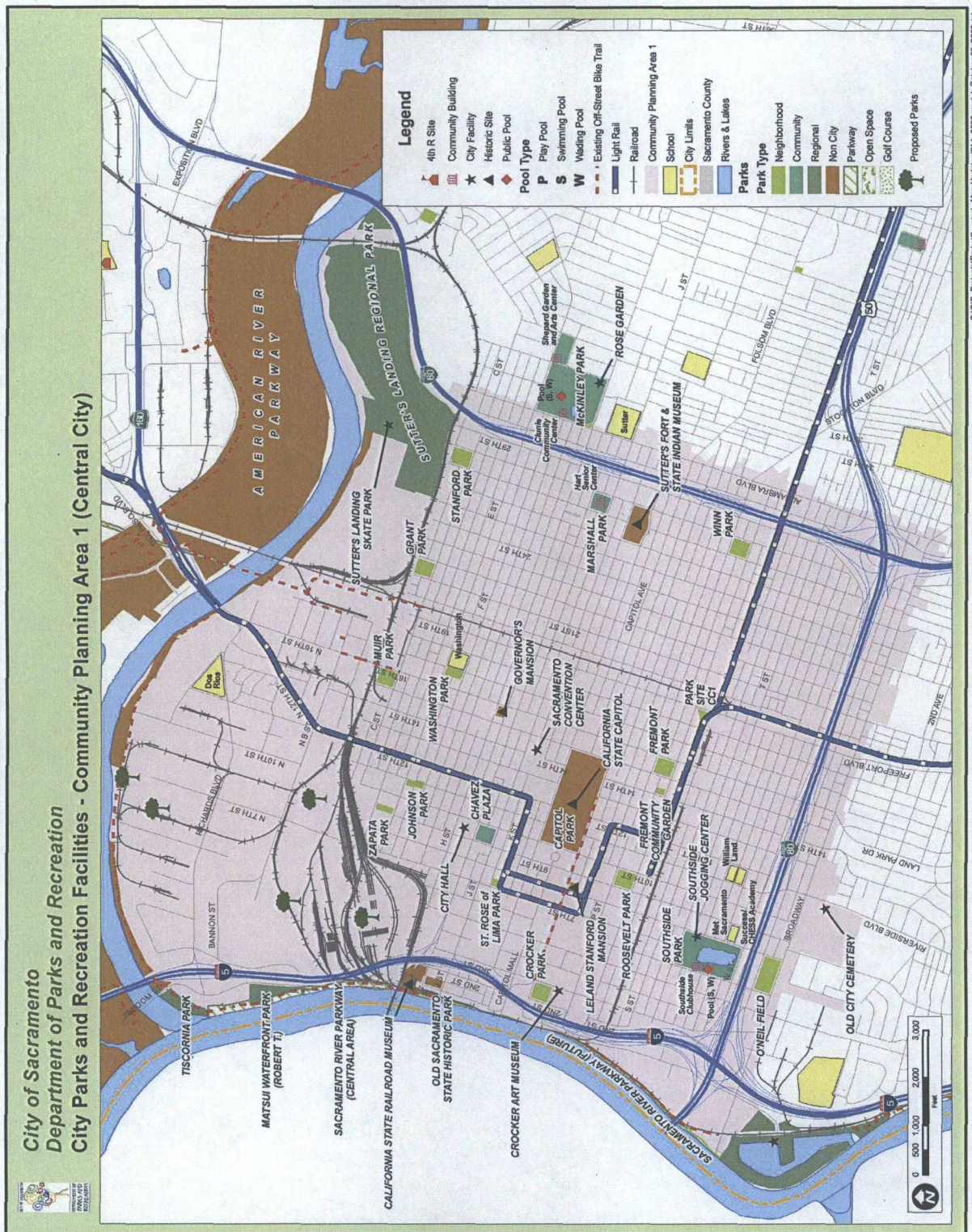
PROJECTS' DESCRIPTIONS AND SCORES

*Planning Area II, Airport/Meadowview
24th Street Bypass Park
Before*



*24th Street Bypass Park
After*

PLANNING AREA 1: Central City



PLANNING AREA 1: Central City

PRIORITY PROJECTS

Sorted by score

PROJECT NAME	DESCRIPTION	SCORE
--------------	-------------	-------

Project Type: Land Acquisition

River District Parks Council District: 1	Plan and acquire new parks for newly developing areas in downtown/riverfront areas.	15
---	---	----

R Street Corridor Parkland Acquisition Council District: 3	Acquire property in the R Street Corridor for mini-urban parks.	13
---	---	----

Project Type: Repair and Rehabilitation

McKinley Park Rehabilitation Council District: 3	Modify restrooms necessary to meet safety and ADA requirements. Repair and expand if possible the tennis building for staff and storage south of the existing tennis courts. Renovate the lake to reduce erosion and maintenance. Renovate the Baseball backstop, bleachers and horseshoe courts. Construct additional walkways to the restroom, rose garden and H St. Construct new park signs, and a metal rose arbor in the center of the rose garden. Replace the wooden play structure with new equipment.	13
---	---	----

OPPORTUNITY PROJECTS

Sorted by score

PROJECT NAME	DESCRIPTION	SCORE
--------------	-------------	-------

Project Type: Community Facility

Teen Center - Pushing the Arts Council District: 1	Support for teens/young adults' programming needs. Arts-based to support their artistic drive.	9
---	--	---

Downtown Community Pool Council District: 1	Develop a 50 meter, olympic-sized pool suitable for water polo with adequate restroom facilities and showers.	7
--	---	---

Clunie Community Center Enhancements Council District: 3	Expand basement restroom and dressing area to be utilized for stage productions and replace park/community center sign.	5
--	---	---

Project Type: Development

Community Garden Development/ Acquisition Council Districts: 1, 3, & 4	Develop community gardens in every community park.	9
--	--	---

Winn Park Enhancements Council District: 3	Complete the concrete walkway on the north of the building at the center of the park and add a small dog park.	6
---	--	---

Docks Area Park on R Street Council District: 1	Develop parks in this area.	5
--	-----------------------------	---

PLANNING AREA 1: Central City

OPPORTUNITY PROJECTS *continued*

Sorted by score

Project Type: *Development (continued)*

Fremont Park Enhancements Council District: 4	Add a café, bocce courts, area for farmers market, benches, lighting, and a shade structure.	5
McKinley Park Tennis Court Development Council District: 3	Develop of a new full-sized tennis court with a double-sided wall inserted in the center, or a half tennis court with a one-sided wall for warm-up or beginners. Courts to be fenced with adequate lighting.	1

Project Type: *Land Acquisition*

21st and N Streets Parkland Acquisition Council District: 1	Acquire land at the southwest corner of 21st and N streets for a new park.	11
Central City Parkland Acquisition Council District: 1	Acquire neighborhood and community parkland in Central City to reduce park acreage need.	11
Dreher Tract Neighborhood Park Acquisition Council District: 1	Acquire parcels for a neighborhood park at N. 18th and Dreher Streets.	10
Docks Area Dog Park Council District: 1	Develop a four acre dog park underneath Pioneer Bridge with river access with a separate area for small/timid dogs.	9
21st and L Streets Community Garden Council District: 3	Acquire land for a community garden on vacant property.	5

Project Type: *Repair and Rehabilitation*

Clunie Pool Rehabilitation Council District: 3	Renovate locker rooms; replace lifeguard stands, pool railings and filtration system.	12
Grant Park Restroom Rehabilitation Council District: 3	Renovate the existing park restroom to current health, safety and ADA requirements, including the addition of automatic locks.	12
Roosevelt Park Basketball Court Rehabilitation Council District: 4	Resurface and/or re-stripe existing basketball court(s). Replace park sign(s).	11
Southside Park Stage Improvements Council District: 4	Develop ADA compliant access to stage area located at Southside Park.	11
Southside Pool Rehabilitation Council District: 4	Replace underground plumbing, pool deck, lifeguard stands, and pool railings.	11

PLANNING AREA 1: Central City

OPPORTUNITY PROJECTS *continued*

Sorted by score

Project Type: Repair and Rehabilitation (continued)

McKinley Park Tennis Court Rehabilitation Council District: 3	Refinish tennis courts.	10
Crocker Park Improvements Council District: 1	Improve and develop Crocker Park in collaboration with the museum. Support the needs of the new museum with better visual and pedestrian connections to Capitol Mall with public space to include walkways, seating, and public art.	9
McKinley Park Irrigation Phase 2 and Lake Landscape Rehabilitation Council District: 3	Repair the park's irrigation system and landscape the lake's perimeter for erosion control. Repair irrigation by installing a centralized irrigation system, repeaters and other related infrastructure.	9
Southside Park Improvements Council District: 4	Add dog waste stations, improve playground gates, add barbeques, tables and benches, additional drinking fountains and an accessible restroom.	9
Marshall Park Rehabilitation Council District: 3	Improvements to include new concrete park entry sign and may include a fountain.	8
Muir Park Basketball Courts Rehabilitation Council District: 3	Resurface and/or re-stripe existing basketball court(s).	8
Zapata Park Rehabilitation Council District: 1	Resurface and/or re-stripe existing basketball court(s). Renovate existing mural and replace existing park signage.	8
Shepherd Garden and Arts Center Bike Rack Development Council District: 3	Add a bicycle rack at the Shepherd Garden and Arts Center in McKinley Park.	7
Southside Pool Improvements Council District: 4	Add a small slide, pool furniture, a screen to hide pool equipment from view and redirect access to the pool from the pool office. Construct zero-entry to pool.	7
Marshall Park Maintainable Islands Council District: 3	Remove turf in park strips between the curb and sidewalk and replace with decomposed granite or groundcover.	6

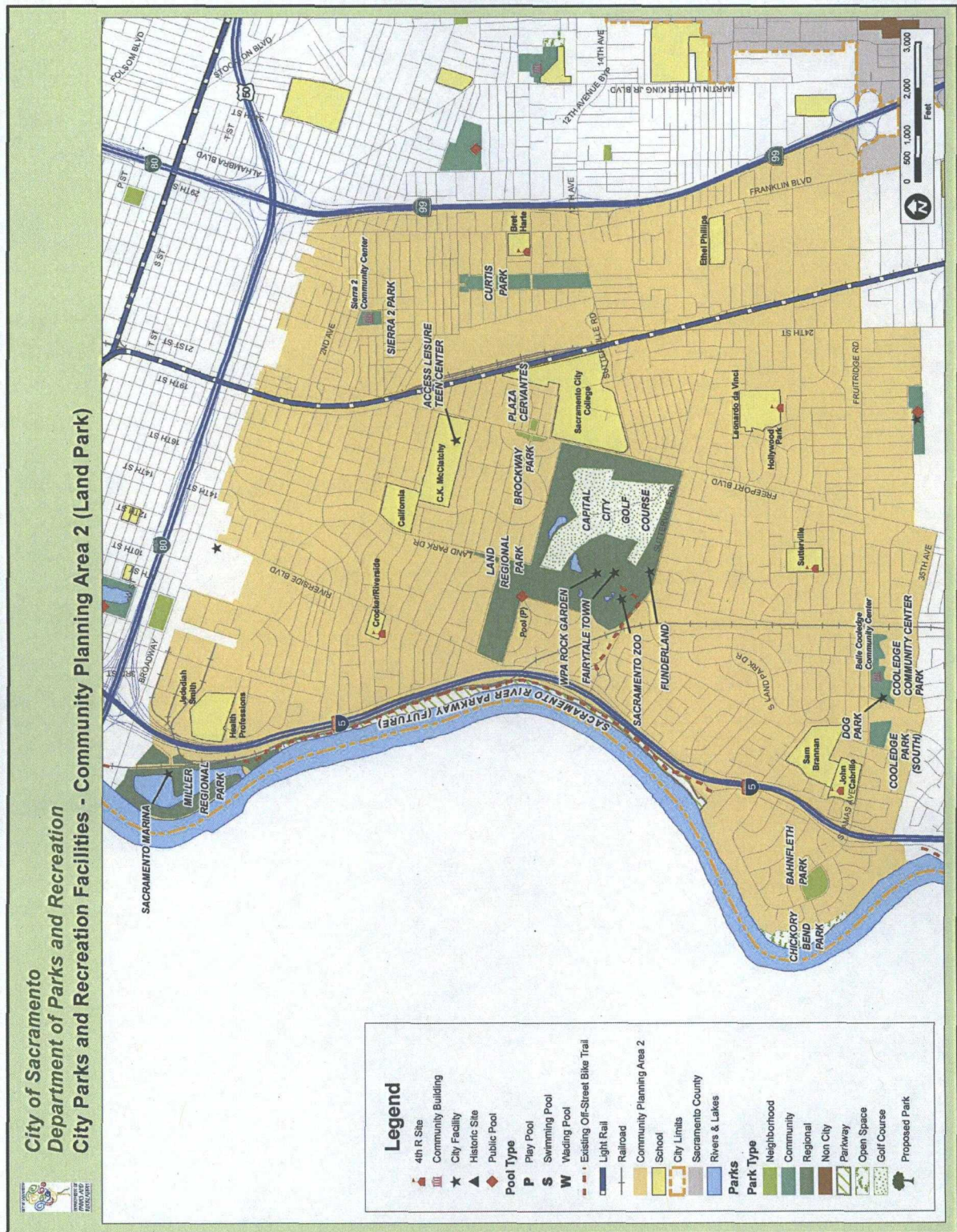
PLANNING AREA 1: Central City

OPPORTUNITY PROJECTS *continued*

Sorted by score

<i>Project Type:</i>	<i>Repair and Rehabilitation (continued)</i>	
Grant Park Sign Council District: 3	Replace wooden park sign with a concrete one.	5
Southside Park Renovation Council District: 4	Complete renovation of island, repaint the stage (facing T Street), resurface the basketball court and repair the shuffle board kit and small clubhouse, replace dead trees.	5
Stanford Park Sign Council District: 3	Replace wooden park sign with a concrete one.	5
O'Neil Field Improvements Council District: 4	Repair and rehabilitate O'Neil Field to upgrade the overall quality of the field.	4
Picnic Tables in Parks Council Districts: 1, 3, & 4	Add picnic tables in every park as needed.	4
Southside Park Accessible Year-Round Pool Council District: 4	Renovate existing swimming pool to be fully accessible and heated for year round use.	2
Southside Park Clubhouse Improvements Council District: 4	Replace ceiling at Southside Clubhouse with a material for improved acoustics.	2
Clunie Year-Round Pool Council District: 3	Heat pool for year-round use.	1

PLANNING AREA 2: Land Park



PLANNING AREA 2: Land Park

PRIORITY PROJECTS *continued*

Sorted by score

PROJECT NAME	DESCRIPTION	SCORE
Project Type: Land Acquisition		
East Phillips Neighborhood Park Council District: 5	Acquire land to develop a neighborhood park to include soccer fields, multi-use fields, picnic areas, and playground equipment or acquire land for a public plaza in the vicinity of 21 st Avenue and Franklin Boulevard. The park would also serve as a detention basin to solve drainage problems in the area.	11
Neighborhood Parkland Acquisition Council District: 5	Acquire property to develop a neighborhood park to include a playground and a water spray feature.	11
Project Type: Development		
Bret Harte Elementary School 4th R Community Garden Council District: 5	Develop a community garden for student learning for the 4th R Program.	10

OPPORTUNITY PROJECTS

Sorted by score

PROJECT NAME	DESCRIPTION	SCORE
Project Type: Community Facility		
Belle Cooledge Community Center Expansion Council District: 4	Add a multipurpose room, kitchen, additional restrooms and parking.	8
Project Type: Development		
Community Garden Development/ Acquisition Council Districts: 4 & 5	Develop community gardens in every community park.	9
Sierra 2 Community Center Enhancements Council District: 5	Improve Curtis Hall for expanded senior program.	8
Sierra 2 Park Enhancements Council District: 5	Add a dog/people drinking fountain, benches, play stations for dogs, additional trees, and benches and picnic tables on the west side of the park.	6
Project Type: Land Acquisition		
Riverside Boulevard Land Acquisition Council District: 4	Acquire several parcels along Riverside Boulevard near Darnel Way and San Mateo Way, split by abandoned railroad right-of-way.	8

PLANNING AREA 2: Land Park

OPPORTUNITY PROJECTS *continued*

Sorted by score

Project Type: Land Acquisition (continued)

Land Park Parkland Acquisition Council Districts: 4 & 5	Acquire neighborhood and community parkland in Land Park to reduce park acreage need.	7
--	--	---

Project Type: Repair and Rehabilitation

Sierra 2 Community Center Renovation Council District: 5	Increase rear driveway access to the community center. Improve accessibility to the 24th Street Theater stage.	10
---	--	----

Sierra 2 Park Basketball Court Rehabilitation Council District: 5	Resurface and/or re-stripe existing basketball court(s).	10
---	--	----

Mangan Pool Improvements Council District: 4	Add additional pool furniture, install a small slide, install screening to hide pool equipment, extend fence line and add turf.	9
---	---	---

Mangan Pool Rehabilitation Council District: 4	Replace underground plumbing, pool deck, lifeguard stands, and pool railings.	9
---	--	---

Cooledge Community Center Park Security Camera Installation Council District: 4	Install security cameras in the parking lot for safety.	7
---	--	---

Mangan Park Rehabilitation Council District: 4	Renovate restrooms; resurface and/or re-stripe existing basketball court(s).	7
---	---	---

Curtis Park Rehabilitation Council District: 5	Renovate existing basketball and tennis courts; add drinking fountain.	6
---	---	---

Sutterville 4th R Portables Council District: 4	Rehabilitate area for children to have activities with decking, railing and ramps. Remove existing space between room 1 and room 2 to provide more direct access.	5
--	--	---

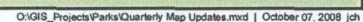
Belle Cooledge Park Rehabilitation Council District: 4	Renovate the fences along Seamas Avenue.	4
---	--	---

Cabrillo 4th R Picnic Area Council District: 4	Work with school to develop shaded picnic area to be used by various programs on Cabrillo Elementary School campus.	4
---	---	---

Bahnfelt Park Sign Council District: 4	Replace wooden park sign with a concrete one.	4
---	---	---

Picnic Tables in Parks Council Districts: 4 & 5	Add picnic tables in every park as needed.	2
--	--	---

2008 PRPG



PLANNING AREA 3: Pocket

PRIORITY PROJECTS

Sorted by score

PROJECT NAME	DESCRIPTION	SCORE
--------------	-------------	-------

Project Type: Development

Charlie Jensen Park Phase II Council District: 4	Develop a walking path at the picnic area and along the existing bike trail going through the park site and an octagon shade shelter over picnic area with seating; increase lighted areas.	12
---	---	----

Lewis Park Enhancements Council District: 7	Add a water spray feature and more trees.	10
--	---	----

Project Type: Repair and Rehabilitation

Dutra Park Lighting Council District: 7	For public safety, add lighting and trim trees to deter criminal activities.	10
--	--	----

OPPORTUNITY PROJECTS

Sorted by score

PROJECT NAME	DESCRIPTION	SCORE
--------------	-------------	-------

Project Type: Community Facility

Pony Express School Portable Classroom for 4th R Program Council District: 4	Develop a portable classroom for more space for more attendees.	9
---	---	---

Project Type: Development

Cool Wind Way Park Development Council District: 7	Add a dog park to this neighborhood park on Pocket Canal Parkway.	9
---	---	---

Seymour Park Enhancements Council Districts: 4 & 7	Develop picnic areas as proposed in master plan and develop pathway lights in light deficient areas to promote safety.	6
---	--	---

Community Garden Development/ Acquisition Council Districts: 4, 7, & 8	Develop community gardens in every community park.	4
--	--	---

Project Type: Land Acquisition

Pocket Area Parkland Acquisition Council Districts: 4, 7, & 8	Acquire neighborhood parkland in Pocket to reduce park acreage need.	7
--	--	---

West Park Neighborhood Park Land Acquisition Council District: 7	Develop a dog park, bike path with benches in a greenbelt/undeveloped lot in West Park neighborhood along West Shore Drive. Maintain the natural quality of the parcel with a future opportunity for connection to bike paths.	5
---	--	---

PLANNING AREA 3: Pocket

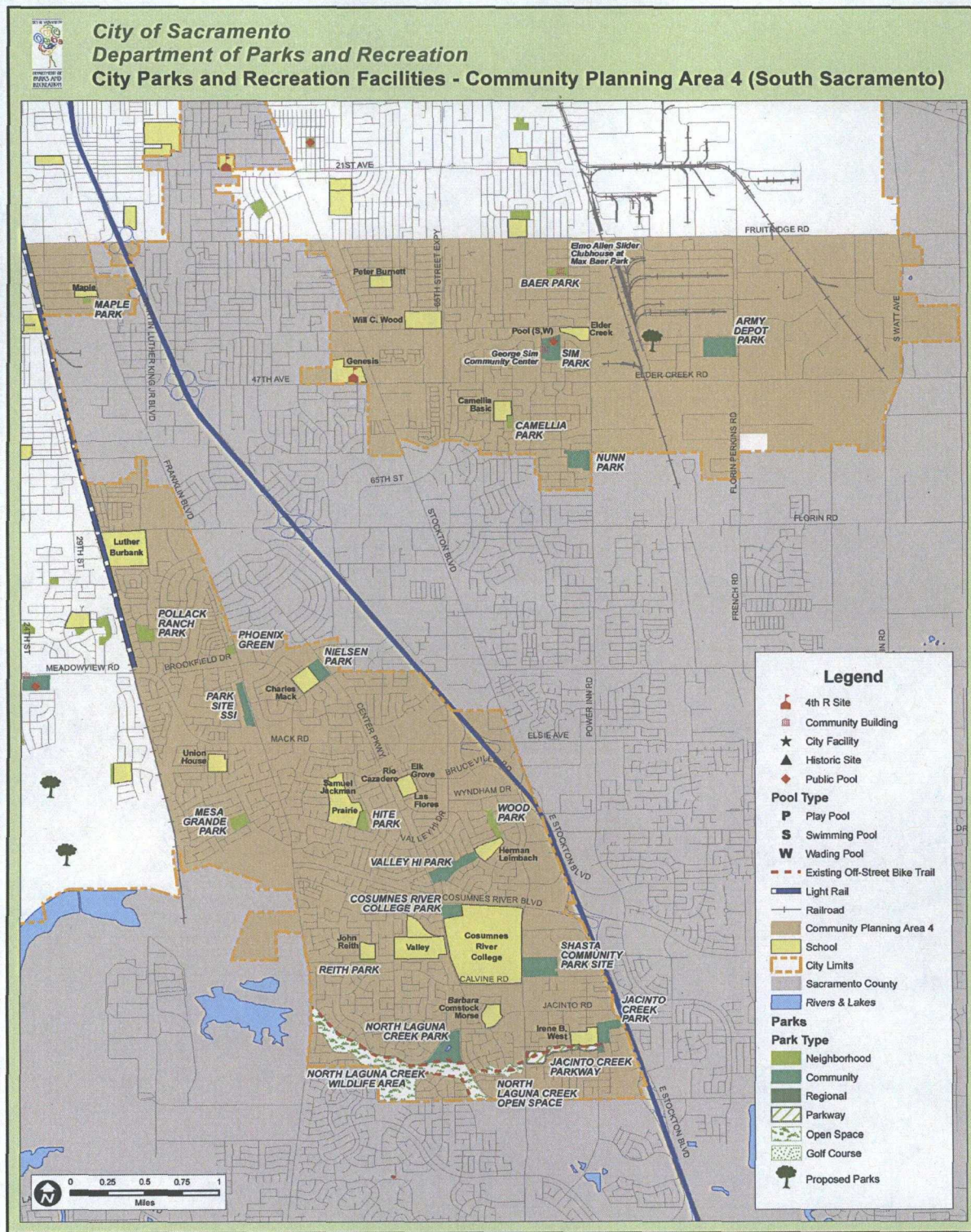
OPPORTUNITY PROJECTS *continued*

Sorted by score

Project Type: Repair and Rehabilitation

Reichmuth Park Rehabilitation Council District: 4	Develop Nature Area in accordance with the updated master plan. Renovate the water spray feature to current health, safety and ADA standards. Replace wooden park sign with concrete one.	9
Caroline Wenzel School 4th R Program Council District: 4	Install running water and sinks to meet sanitation, health issues, and licensing requirements.	8
Z'Berg Park Basketball Court Rehabilitation Council District: 8	Resurface and/or re-stripe existing basketball court(s).	6
Charter Pointe Park Security Lighting Council District: 7	Add security lighting.	5
Garcia Bend Park Lighting Council District: 7	Add lighting to the existing sports fields.	5
Parkway Oaks Park Field Renovation Council District: 7	Renovate this high-use playing field.	5
Seymour Park Tree Assessment Council Districts: 4 & 7	Prepare a tree assessment and a tree pruning/rehabilitation plan.	5
Lewis Park Baseball Field Renovation Council District: 7	Renovate existing baseball field.	4
Parkway Oaks Park Centralized Irrigation Council District: 7	Install centralized irrigation system repeaters and related infrastructure.	3
Picnic Tables in Parks Council Districts: 4, 7, & 8	Add picnic tables in every park as needed.	3
Portuguese Park Playground Improvement Council District: 7	Remove spring toys at Portuguese Park to install an additional swing bay for baby buckets.	3
Renfree Park Soccer Field Renovation Council District: 7	Renovation of existing high-use soccer fields. Replace wooden park sign with a concrete one.	3

PLANNING AREA 4: South Sacramento



PLANNING AREA 4: South Sacramento

PRIORITY PROJECTS

Sorted by score

PROJECT NAME	DESCRIPTION	SCORE
Project Type: Land Acquisition		
Lemon Hill Area Community Garden Acquisition Council District: 6	Acquire the privately-owned land which currently has a community "Weed & Seed" Program garden site (around 9.5 acres) so that it may be a permanent city garden.	13
Project Type: Community Facility		
Manor Recreation and Swim Club Acquisition and Improvements Council District: 6	Acquire and renovate the Manor Recreation and Swimming Club property by collaborating with the Sacramento Housing and Redevelopment Agency.	12
Will C. Wood School Park Healthy Start Council District: 6	Create Healthy Start Program with a portable building at Wood School.	12

OPPORTUNITY PROJECTS

Sorted by score

PROJECT NAME	DESCRIPTION	SCORE
Project Type: Community Facility		
Valley Hi/North Laguna Community Center Development Council District: 8	Construct a new community center at the Shasta Community Park site.	12
Burbank Sports Complex Development Council District: 8	Develop Phase 2 of the all weather sports complex for football, soccer, softball, baseball and track and field amenities.	11
Sim Park Childcare Facility Council District: 6	Develop a childcare facility.	11
Danny Nunn Park Clubhouse Council District: 6	Develop a small clubhouse at the park.	10
Project Type: Development		
Army Depot Park Site Development Council District: 6	Develop the site consistent with the park master plan.	12
Pollack Park Ranch Development Council District: 8	Develop a walking trail.	11
Franklin Boyce Development Council District: 8	Develop the site consistent with the park master plan such amenities as an open turf field, 6' fence, walking path, picnic, play areas, parking lot, and restroom.	10
North Laguna Creek Park Enhancements Council District: 8	Develop park benches, a community center, small amphitheatre, picnic shade, water spray feature, decorative trash cans and central kiosk to this community park.	9

PLANNING AREA 4: South Sacramento

OPPORTUNITY PROJECTS *continued*

Sorted by score

Project Type: *Development (continued)*

Cosumnes River College Sports Fields Phase II Council District: 8	Add lighting, restrooms, football fields, concession stand and parking to an existing joint-use facility.	6
Valley Hi Park Community Garden Council District: 7	Develop a community garden.	6
Community Garden Development/ Acquisition Council Districts: 5, 6, 7, & 8	Develop community gardens in every community park.	5
Valley Hi Park Enhancements Council District: 7 master plan update.	Add restrooms, picnic shelter, water spray feature, teen center, and plant additional trees per the adopted	2

Project Type: *Land Acquisition*

Greater St. Stephens Parish Area Park Council District: 6	Acquire land for the development of a neighborhood park with a play/adventure area, picnic area and walking paths.	11
Elder Creek Area Community Garden Acquisition Council District: 6	Acquire property south of Elder Creek for the development of a community garden.	10
Fruitridge Area Community Garden Council District: 6	Provide tot lot and community garden in conjunction with low-income housing development.	10
Asian Interpretive Garden/Park Council District: 6	Acquire parcel for the development of an Asian cultural/historical garden/park.	9
South Sacramento Parkland Acquisition Council Districts: 5, 6, 7, & 8	Acquire neighborhood parkland in South Sacramento to reduce park acreage need.	9

Project Type: *Repair and Rehabilitation*

George Sim Park Rehabilitation Council District: 6	Renovate the existing walking/jogging trail with new decomposed granite and realign the irrigation system to prevent overspray.	9
George Sim Pool Rehabilitation Council District: 6	Replace underground plumbing, pool deck, lifeguard stands, and pool railings. Remove old wading pool.	9
Pollack Ranch Park Rehabilitation Council District: 8	Resurface and/or re-stripe existing basketball court(s). Installation of better volleyball courts, new benches and tables, new barbeque grills, more lighting, and better playground development.	8

PLANNING AREA 4: South Sacramento

OPPORTUNITY PROJECTS *continued*

Sorted by score

Project Type: Repair and Rehabilitation (continued)

George Sim Park Improvements Phase I Council District: 6	Renovate and improve large little league field, bleachers, and surrounding area. Add a second picnic shelter with barbeque, benches and a drinking fountain.	7
George Sim Pool Improvements Council District: 6	Add additional pool furniture, install a small slide, install screening to hide pool equipment and increase pool office space for better customer service.	7
Hite Park Lighting Council District: 7	Add security lights.	7
Max Baer Park Improvements Council District: 6	Develop additional lighting and signage, including a concrete park sign.	7
Nielsen Park Improvements Council District: 8	Add soccer fields, resurface and/or re-stripe existing tennis court(s), improve the existing baseball fields, and add post and cable fencing to protect park from cars.	7
Valley Hi Park Rehabilitation Council District: 7	Upgrade turf, repair existing irrigation system and walkways. Resurface and/or re-stripe existing basketball court(s).	7
Wood Park Basketball Court Rehabilitation Council District: 8	Resurface and/or re-stripe existing basketball court(s).	6
Mesa Grande Park Jogging Trail Rehabilitation Council District: 7	Improve existing jogging trail.	4
Maple Park Tennis Court Rehabilitation Council District: 5	Renovate existing tennis courts or develop a reuse plan.	3
Picnic Tables in Parks Council Districts: 5, 6, 7, & 8	Add picnic tables in every park as needed.	3

2008 PRPG



PLANNING AREA 5: East Broadway

PRIORITY PROJECTS

Sorted by score

PROJECT NAME	DESCRIPTION	SCORE
--------------	-------------	-------

Project Type: Repair and Rehabilitation

Bill Bean, Jr. Memorial Park Safety Implementation Plan Council District: 6	Develop and implement the revised master plan for the existing park to increase usage and update existing park facilities per the Parks and Recreation Safety Implementation Plan. Install concrete park sign.	15
--	--	----

McClatchy Park Safety Implementation Plan Council District: 5	Implement the revised master plan to increase usage and implement the Parks and Recreation Safety Implementation Plan. Install concrete park sign.	15
--	--	----

Project Type: Community Facility

21st Avenue Senior Center Council District: 6	Develop a Senior Center in conjunction with a low-income housing project.	13
--	---	----

OPPORTUNITY PROJECTS

Sorted by score

PROJECT NAME	DESCRIPTION	SCORE
--------------	-------------	-------

Project Type: Community Facility

Coloma Community Center Enhancements Council District: 6	Rehabilitate the Community Center to include: additional rooms in center courtyard, outdoor event area, garden in courtyard, kitchen expansion, upgrade windows, central heating and air, reservation office, and new flooring.	8
---	---	---

Tahoe Park Neighborhood Center Council District: 6	Develop a neighborhood center or expand and improve existing pool building.	8
---	---	---

Project Type: Development

Community Garden Development/Acquisition Council Districts: 3, 5, & 6	Develop community gardens in every community park.	9
--	--	---

35th and Broadway Plaza Development Council District: 5	Develop a public plaza at the SHRA owned site in Oak Park.	7
--	--	---

Oak Park Enhancements Council District: 5	Enhance park by adding play areas and soccer fields. Replace wooden park sign with concrete one.	7
--	--	---

Redding Avenue Park Site Council District: 6	Develop this joint-use detention/park.	7
---	--	---

PLANNING AREA 5: East Broadway

OPPORTUNITY PROJECTS *continued*

Sorted by score

Project Type: Development (continued)

Tahoe Park Enhancements Council District: 6	Add a new basketball court, fence around the tot lot, new picnic tables, barbeque, decorative trash receptacles and a rose garden or a water feature/pond (per "Visioning for 2010" process).	7
Tahoe Tallac Park Enhancements Council District: 6	Develop new amenities for this youth sports complex including field lighting, a restroom and walkways for ADA compliance. Replace the wooden park sign with a concrete park sign.	7

Project Type: Land Acquisition

Oak Park Neighborhood Community Gardens Council District: 5	Acquire parkland for community gardens.	13
Oak Park Neighborhood Park Land Acquisition Council District: 5	Acquire land south of Broadway and west of Martin Luther King, Jr. Boulevard.	11
Redding Avenue Area Parkland Acquisition Council District: 6	Acquire additional land along Redding Avenue to expand the existing park site.	11
Colonial Manor Neighborhood Park Site Council District: 6	Acquire a parcel for development of soccer fields and other park amenities.	9
East Broadway Parkland Acquisition Council Districts: 3, 5, & 6	Acquire community parkland to reduce park acreage need.	9

Project Type: Repair and Rehabilitation

Tahoe Park Rehabilitation Council District: 6	Renovate existing restrooms, baseball fields, and basketball court. Repair the existing horseshoe pit. Replace benches and bleachers as well as the wooden park sign with a concrete one.	10
Lawrence Park Rehabilitation Council District: 5	Renovate existing restrooms to current ADA and health standards, plant new trees, and add automatic locking device. Resurface and/or re-stripe existing basketball court(s). Replace wooden park sign with a concrete one.	9
Colonial Park Improvements Council District: 5	Add jogging trail around the park and irrigation system to enable new tree planting around the park perimeter, a bench to the playground area, and drainage to the park. Upgrade wooden park sign to concrete one.	8

PLANNING AREA 5: East Broadway

OPPORTUNITY PROJECTS *continued*

Sorted by score

Project Type: Repair and Rehabilitation (continued)

Colonial Park Rehabilitation Council District: 5	Resurface and/or re-stripe existing basketball court and improve the existing baseball field, including the backstop, for greater use. Replace bleachers at the baseball field.	8
Earl Warren Park Rehabilitation Council District: 6	Renovate or reuse the sand volleyball courts (consider neighborhood skatepark), and renovate irrigation system and turf. Replace wooden park sign with concrete one.	8
Fourth Avenue Park Basketball Court Rehabilitation Council District: 5	Resurface and/or re-stripe existing basketball court(s).	8
Temple Park Rehabilitation Council District: 5	Replace park signage, renovate existing irrigation system and repair walkways. Resurface and/or re-stripe existing basketball court(s). Replace wooden park sign with a concrete park sign.	8
Coloma Park Improvements Council District: 6	Add new adventure play equipment, more trees, picnic area, shade structure and barbeque to small park behind community center. Replace wooden park sign with a concrete one.	6
Tahoe Pool Rehabilitation Council District: 6	Replace underground plumbing, pool deck, lifeguard stands, and pool railings.	6
Greenfair Park Sign Council District: 5	Replace wooden park sign with a concrete one.	5
Picnic Tables in Parks Council Districts: 3, 5, & 6	Add picnic tables in every park as needed.	5
Oak Park Community Center Maintainable Islands Council District: 5	Replace turf islands in parking lot and on 8th Avenue with groundcover or decomposed granite.	4
Tahoe Pool Improvements Council District: 6	Add additional pool furniture, install a small slide, install screening to hide pool equipment and add a new sign in front of the pool house.	4
Coloma Park Basketball Court Rehabilitation Council District: 6	Resurface and/or re-stripe existing basketball court(s).	3

2008 PRPG



PLANNING AREA 6: East Sacramento

PRIORITY PROJECTS

Sorted by score

PROJECT NAME	DESCRIPTION	SCORE
<i>Project Type: Land Acquisition</i>		
65th Street and Elder Creek Area Neighborhood Park Council District: 6	Acquire land for the development of a neighborhood park including: tot lot, walkways, picnic tables and a water play feature.	11
<i>Project Type: Repair and Rehabilitation</i>		
Oki Park Restroom Rehabilitation Council District: 6	Rehabilitate the existing restroom facility to current ADA and other standards.	11
<i>Project Type: Community Facility</i>		
College Glen Area Room/Building Council District: 6	Add a portable building at Jefferson Elementary School for a community room/center for public meetings and gatherings.	10

OPPORTUNITY PROJECTS

Sorted by score

PROJECT NAME	DESCRIPTION	SCORE
<i>Project Type: Community Facility</i>		
Glenn Hall Park Neighborhood Center Council District: 3	Develop a neighborhood center.	10
Glenn Hall Pool Rehabilitation Council District: 3	Replace underground plumbing, pool deck, lifeguard stands, and pool railings.	9
Glenn Hall Pool Enhancements Council District: 3	Add a wading pool and additional tables with shade. Install screen to hide pool equipment from view.	8
Oki Pool Enhancement Council District: 6	Install a small slide at the swimming pool.	3
<i>Project Type: Development</i>		
East Portal Park Jogging Trail Council District: 3	Add a jogging trail around the perimeter of the park.	9
Community Garden Development/ Acquisition Council Districts: 3 & 6	Develop community gardens in every community park.	6
Glenbrook Park Enhancements Council District: 6	Evaluate and redesign master plan to consider the development of the following: dog park, youth baseball, lighting, jogging/walking trails, chip seal for bike river access, bocce courts, etc. Add additional lighting, picnic tables, new barbeques, and benches.	6

PLANNING AREA 6: East Sacramento

OPPORTUNITY PROJECTS *continued*

Sorted by score

Project Type: *Development (continued)*

Oki Park Open Space Development Council District: 6	Develop a dog park, two horseshoe pits, a picnic area, and two bocce courts.	6
Glenn Hall Park Enhancements Council District: 3	Add a drinking fountain for dogs and a dog park. Replace foam sign with a concrete park sign.	5
Glenn Hall Park Bike/Pedestrian Bridge Council District: 3	Develop a bike/pedestrian bridge over the American River.	5
Glenbrook Park Parking Lot Enhancements Phase II Council District: 6	Pave the northern portion of the parking lot which is currently gravel/dirt and add landscaping.	5

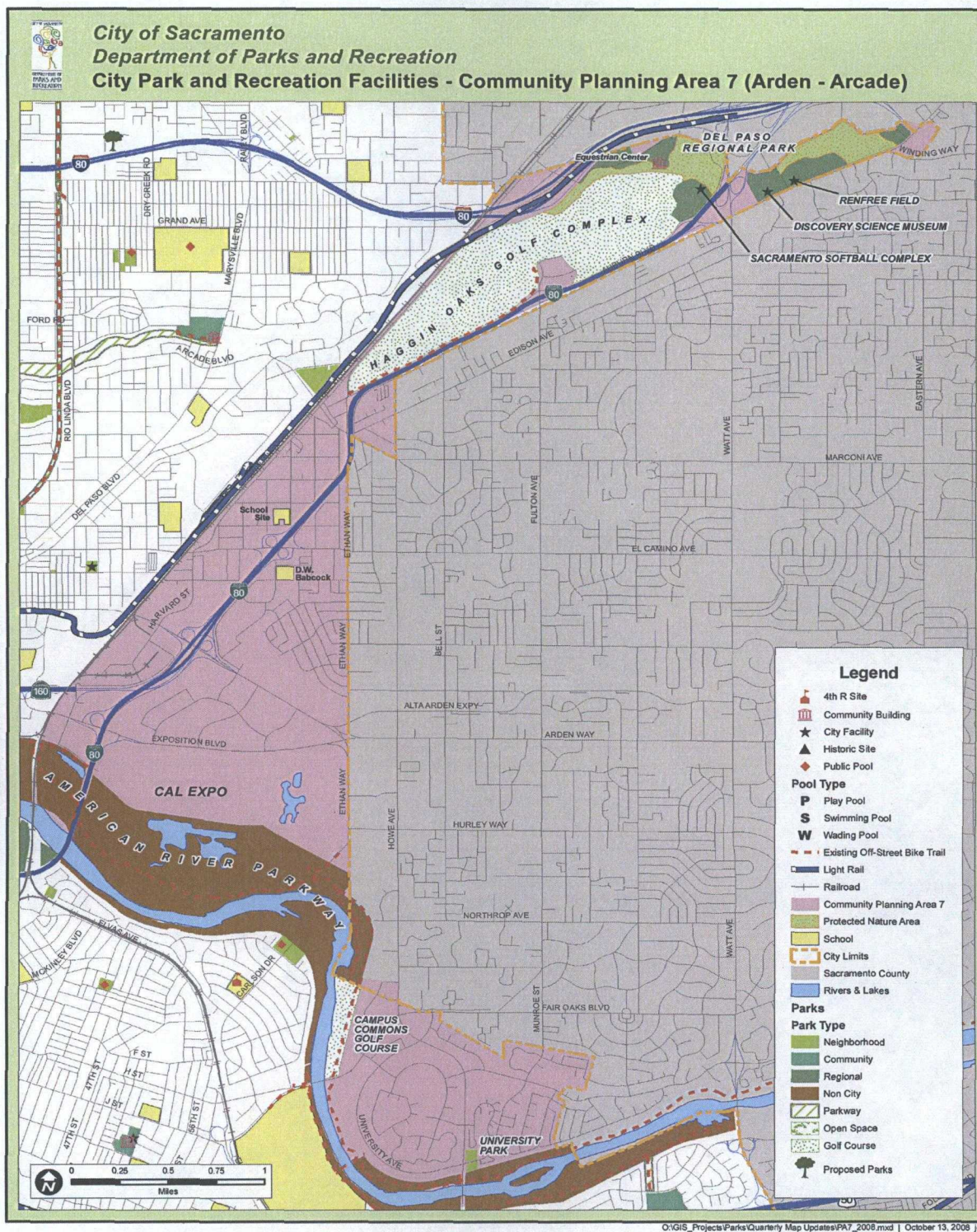
Project Type: *Land Acquisition*

East Sacramento Parkland Acquisition Council Districts: 3 & 6	Acquire neighborhood and community parkland in East Sacramento to reduce park acreage need.	9
East Sacramento Neighborhood Tot Lot Council District: 3	Acquire a small parcel to develop a small tot lot.	1

Project Type: *Repair and Rehabilitation*

Caleb Greenwood School 4th R Program Council District: 3	Install running water and sinks to meet sanitation and licensing requirements.	8
Glenbrook Park Restroom Renovation Council District: 6	Renovate existing restroom.	8
Glenbrook Park Centralized Irrigation Council District: 6	Install centralized irrigation system repeaters and related infrastructure.	6
Glenn Hall Park Centralized Irrigation Council District: 3	Install centralized irrigation system repeaters and related infrastructure.	6
Oki Pool Rehabilitation Council District: 6	Replace exterior fencing with tubular steel fencing, remove the old wading pool and replace lifeguard stands and pool railings.	6
Oki Park Basketball Court Council District: 6	Resurface and/or re-stripe existing basketball court(s).	4
Picnic Tables in Parks Council Districts: 3 & 6	Add picnic tables in every park as needed.	4

PLANNING AREA 7: Arden/Arcade



PLANNING AREA 7: Arden/Arcade

PRIORITY PROJECTS

Sorted by score

PROJECT NAME	DESCRIPTION	SCORE
Project Type: Land Acquisition		
Ben Ali Neighborhood Park Acquisition Council District: 3	Acquire land in this neighborhood for a neighborhood park with facilities for children.	13
Auburn/Marconi Neighborhood Parkland Acquisition Council District: 3	Acquire land for a children's park in the Auburn/Marconi neighborhood at the east corner of Auburn Boulevard and Marconi Circle.	11
Project Type: Development		
University Park Enhancements Council District: 3	Add a picnic area, shade structure, barbeques and water spray feature on the south side of the park along the American River. Replace wooden sign with a concrete one.	10

OPPORTUNITY PROJECTS

Sorted by score

PROJECT NAME	DESCRIPTION	SCORE
Project Type: Development		
Community Garden Development/ Acquisition Council Districts: 2 & 3	Develop community gardens in every community park.	6
Project Type: Land Acquisition		
Arden/Arcade Parkland Acquisition Council District: 3	Acquire neighborhood parkland in Arden/Arcade to reduce park acreage need.	9
Project Type: Repair and Rehabilitation		
Picnic Tables in Parks Council Districts: 2 & 3	Add picnic tables in every park as needed.	4

2008 PRPG



PLANNING AREA 8: North Sacramento

PRIORITY PROJECTS

Sorted by score

PROJECT NAME	DESCRIPTION	SCORE
<i>Project Type: Repair and Rehabilitation</i>		
Hagginwood Park Safety Implementation Plan Council District: 2	Execute the Parks and Recreation Safety Implementation Plan. Replace wooden sign with a concrete one. Investigate expanding the park.	15
Johnston Park Safety Implementation Plan Council District: 2	Execute the Parks and Recreation Safety Implementation Plan.	15
Strawberry Manor Park Safety Implementation Plan Council District: 2	Execute the Parks and Recreation Safety Implementation Plan. Remove the restroom building.	15

OPPORTUNITY PROJECTS

Sorted by score

PROJECT NAME	DESCRIPTION	SCORE
<i>Project Type: Development</i>		
Triangle Park Enhancements Council District: 2	Develop additional amenities at this park for a tot lot, shade structure over a group picnic area.	8
Community Garden Development/ Acquisition Council Districts: 2 & 3	Develop community gardens in every community park.	7
Richardson Village Park Development Council District: 2	Develop the existing master plan and create a hard dirt surface (size) for playing "top," add park safety lighting, walking trails, shaded picnic areas, nature area, and community gardens.	6
Rea Park Enhancements Council District: 2	Redesign this park for a tot lot and other children activities and safety features for security.	5
Redwood Park Enhancements Council District: 2	Redesign this site to make it a neighborhood park.	5
Robertson Park Enhancements Council District: 2	Add playing fields, batting cage, volleyball court, trees, and a picnic area. Add a covered lighted basketball court to Robertson Park. Develop a larger pool for greater use of the community. Replace wooden park sign with a concrete one.	5
Gateway Park Phase II Council District: 2	Fund Phase II development, includes a concrete park sign and other park signage.	4

PLANNING AREA 8: North Sacramento

OPPORTUNITY PROJECTS *continued*

Sorted by score

Project Type: *Development (continued)*

Mama Marks Park Enhancements Council District: 2	Add various recreational features including a walking trail, and playing fields, restrooms and drinking fountains. Upgrade one wooden park sign and replace the other missing sign with concrete ones.	3
---	--	---

Robla Area Community Center Council District: 2	Develop a community center in the Robla area.	3
--	---	---

Woodlake Park Enhancements Council District: 2	Develop a walking/jogging trail and add fencing around the perimeter of the existing playground for children's safety.	3
---	--	---

Robla Park Vehicular Access Development Council District: 2	Develop vehicular access around park for maintenance staff.	2
---	---	---

Project Type: *Land Acquisition*

South Hagginwood Area Park Land Acquisition Council District: 2	Acquire parcel for a park and community garden.	9
--	---	---

Five Star Park Land Acquisition Council District: 2	Acquire and develop land across from Five Star Park at Kelly and Doolittle for park development.	8
--	--	---

Young's Heights Area Park Council District: 2	Purchase land to develop a small pocket park to include a small tot lot.	4
--	--	---

North Old Sacramento Neighborhood Park Acquisition and Development Council District: 2	Acquire the city-owned triangular parcel at Eleanor Avenue and Beaumont for park development and bicycle trail stop.	3
--	--	---

South Hagginwood Estates Neighborhood Park Land Acquisition Council District: 2	Acquire park land bordered by roads Olivera Way, Lexington Street, and Fienza Avenue for park development.	1
---	--	---

Project Type: *Repair and Rehabilitation*

Robertson Play Pool Rehabilitation Council District: 2	Replace interior surface of the play pool and investigate extending fencing. Develop larger pool if possible.	11
---	---	----

Robertson Park Parking Lot Redesign Council District: 2	Redesign the parking lots.	7
--	----------------------------	---

Mackey Memorial Park at Kenwood Oaks Park Sign Council District: 3	Install a concrete park sign.	5
--	-------------------------------	---

PLANNING AREA 8: North Sacramento

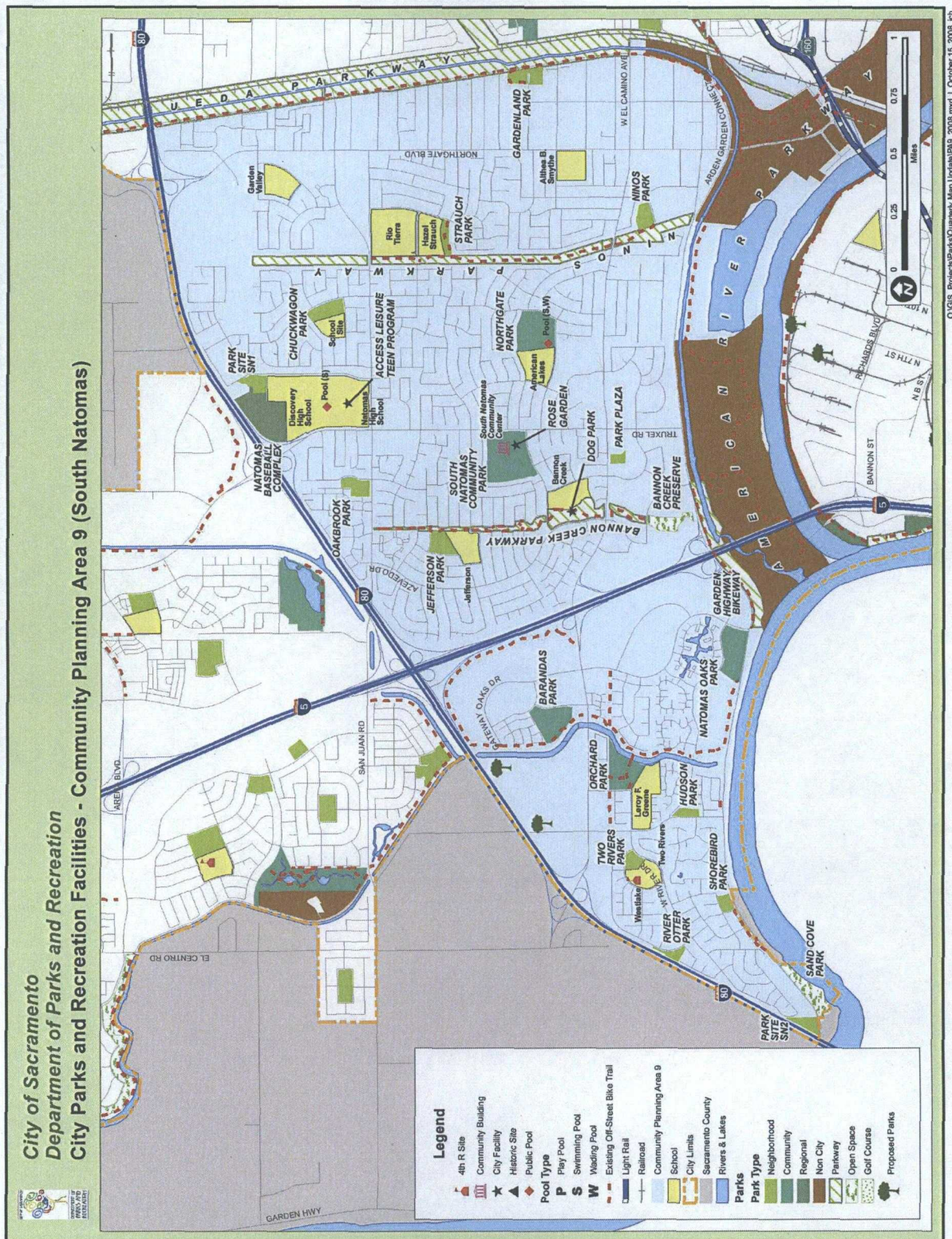
OPPORTUNITY PROJECTS *continued*

Sorted by score

Project Type: Repair and Rehabilitation (continued)

Robla School District Play Area Rehabilitation	Enhance the playground at Bell Avenue with a shade structure. Provide additional play equipment and new soccer equipment at Robla School.	5
Picnic Tables in Parks Council Districts: 2 & 3	Add picnic tables in every park as needed.	4

PLANNING AREA 9: South Natomas



PLANNING AREA 9: South Natomas

PRIORITY PROJECTS

Sorted by score

PROJECT NAME	DESCRIPTION	SCORE
--------------	-------------	-------

Project Type: Repair and Rehabilitation

Gardenland Park Safety Implementation Plan Council District: 1	Execute the Parks and Recreation Safety Implementation Plan.	15
---	--	----

Ninos Park Safety Implementation Plan Council District: 1	Execute the Parks and Recreation Safety Implementation Plan.	15
--	--	----

Project Type: Community Facility

Natomas Oaks Park Environmental Education Center Council District: 1	Develop a nature interpretive center at Natomas Oaks Park in partnership with Sacramento Tree Foundation.	13
---	---	----

OPPORTUNITY PROJECTS

Sorted by score

PROJECT NAME	DESCRIPTION	SCORE
--------------	-------------	-------

Project Type: Community Facility

Northgate Park Doyle Pool Enhancement Council District: 1	Install a small slide at the swimming pool and replace lifeguard stands and pool railings.	6
--	--	---

Project Type: Development

Barandas Community Park Phase III Council District: 1	Develop baseball field.	8
--	-------------------------	---

Orchard Park Phase III Council District: 1	Develop a restroom and other elements consistent with the community park master plan.	8
---	---	---

Northgate Park Enhancements Council District: 1	Expand or replace existing restroom, add additional park lighting and a picnic shade structure, and develop new court games.	6
--	--	---

Park Plaza Phase II Council District: 1	Complete the development and improvements of this unique urban plaza by installing a water feature, seat walls, and picnic tables.	6
--	--	---

River Otter Park Phase II Council District: 1	Continue development of this site into a small children's or neighborhood park. Add a half-basketball court.	6
--	--	---

PLANNING AREA 9: South Natomas

OPPORTUNITY PROJECTS *continued*

Sorted by score

Project Type: *Development (continued)*

South Natomas Community Park Development Council District: 1	Develop remaining elements of adopted master plan, including safety improvements.	6
Community Garden Development/ Acquisition Council District: 1	Develop community gardens in every community park.	5
South Natomas Neighborhood Skateboard Park Council District: 1	Develop a neighborhood skatepark.	5
Shorebird Park Phase III Council District: 1	Install a walking path from the intersection of Kittiwake and Swainson to the existing picnic area. Add irrigation and vines to the masonry wall and horseshoe courts.	4
Sally Hudson Park Interpretive Signage Council District: 1	Add interpretive signage to nature area.	3
Chuckwagon Park Dog Park Council District: 1	Develop a dog park.	2
Park Site SN2 & SN3 Development Council District: 1	Master plan and develop these sites in the western Natomas area near I-80 and Garden Highway into one park.	2
South Natomas Area Community Garden Council District: 1	Develop vacant property adjacent to City Fire Station on Truxel as a community garden.	1

Project Type: *Land Acquisition*

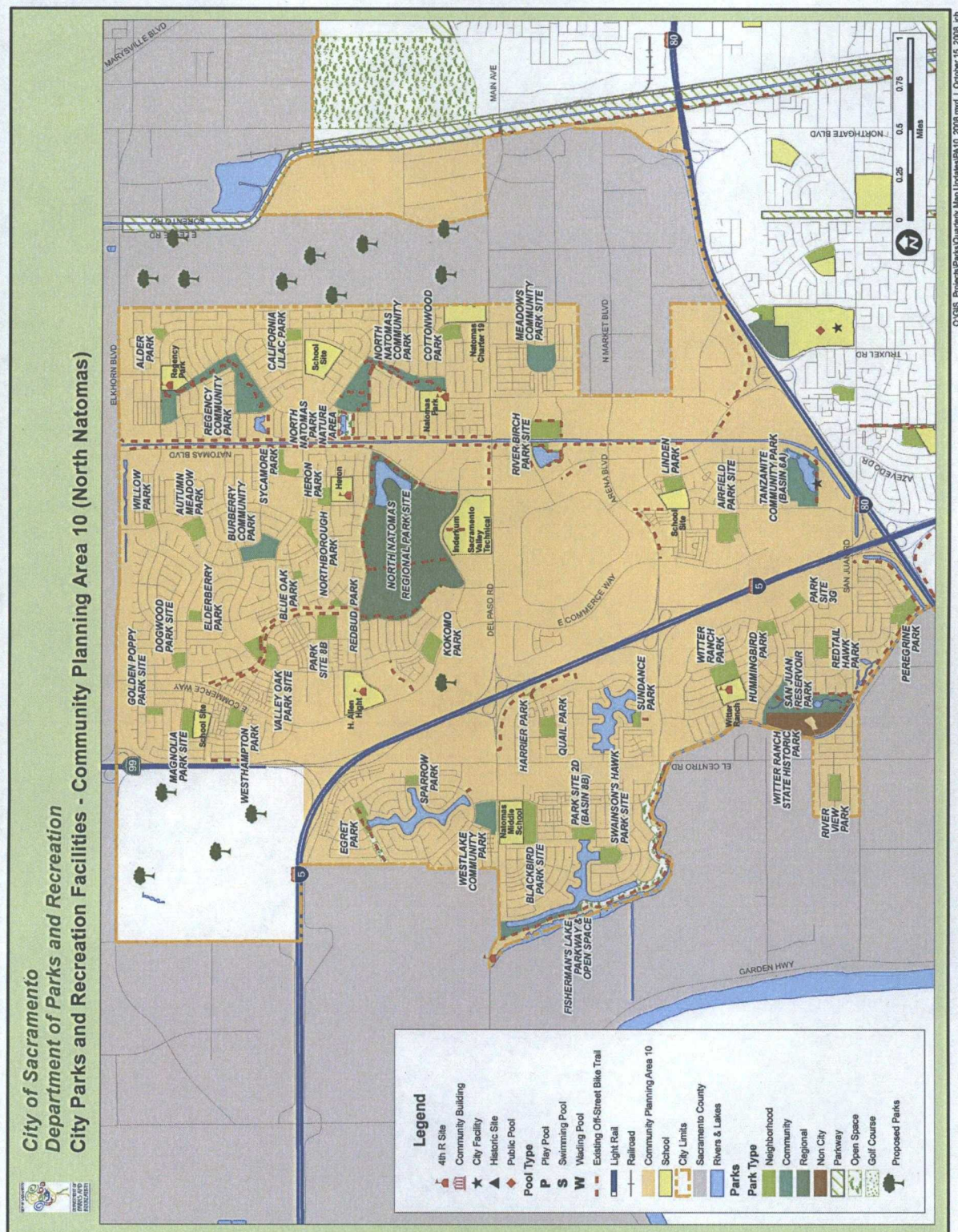
Gardenland Area Neighborhood Park Acquisition Council District: 1	Acquire new land for a park in this neighborhood.	11
Chuckwagon Park Acquisition Council District: 1	Acquire additional acres of vacant Del Paso Heights School District property for park expansion.	4
Riverbend Area Park Acquisition Council District: 1	Acquire parkland in Riverbend area.	4

PLANNING AREA 9: South Natomas**OPPORTUNITY PROJECTS** *continued**Sorted by score*

Project Type: *Repair and Rehabilitation*

South Natomas Community Center Maintainable Islands Council District: 1	Remove turf in parking lot islands and replace with groundcover, mulch or decomposed granite. Plant additional trees.	3
Picnic Tables in Parks Council District: 1	Add picnic tables in every park as needed.	1

PLANNING AREA 10 : North Natomas



PLANNING AREA 10 : North Natomas

PRIORITY PROJECTS

Sorted by score

PROJECT NAME	DESCRIPTION	SCORE
--------------	-------------	-------

Project Type: Repair and Rehabilitation

Tanzanite Community Park Improvements Council District: 1	Install sensor lights to promote safety and prevent vandalism at existing skatepark after park hours. Plant trees in existing dog park. Provide drainage east of the water area in the dog park.	7
Egret Park Master Plan Revision Council District: 1	Revise master plan to accommodate community requests for improvements to the existing park.	6

Project Type: Development

Valley Oak Park Phase II Council District: 1	Develop lighted sports field.	6
---	-------------------------------	---

OPPORTUNITY PROJECTS

Sorted by score

PROJECT NAME	DESCRIPTION	SCORE
--------------	-------------	-------

Project Type: Development

Autumn Meadow Park Phase II Council District: 1	Develop a fitness court with exercise stations.	4
Heron Park Extension Council District: 1	Develop undeveloped land the size of one residential lot as parkland.	4
Kokomo Park Phase II Council District: 1	Develop restrooms and water play area.	4
Northborough Park Phase II Council District: 1	Develop park per the master plan: tot lot, picnic areas, volleyball, and baseball.	4
Peregrine Park Phase II Council District: 1	Add a restroom and sports field lighting.	4
Redbud Park Phase II Council District: 1	Develop Phase II park elements.	4
Redbud Park Rehabilitation Council District: 1	Repair irrigation, landscape entry from North Park Drive to Babcock Way, east of the bike trail and west side of entrance under the sign. Put shade structure over the tot lot and add two swings for babies.	4
Regency Community Park Phase III Council District: 1	Develop additional park elements consistent with the master plan: concession stand, water feature, and storage.	4

PLANNING AREA 10 : North Natomas

OPPORTUNITY PROJECTS *continued*

Sorted by score

Project Type: *Development (continued)*

River Birch Park Phase II Council District: 1	Develop Phase II park elements: soccer field and ballfield.	4
Tanzanite Community Park Phase III Council District: 1	Develop Phase III park elements: tennis courts, baseball field, additional parking lot and bike trails.	4
Westlake Park Phase II Council District: 1	Develop water spray feature and bocce ball courts.	4
Witter Ranch Park Phase III Council District: 1	Develop Phase III park elements: tennis courts, walkways, and basketball/tennis.	4
Blackbird Park Council District: 1	Develop park elements per the master plan.	2
Blue Oak Park Phase II Council District: 1	Develop remaining facilities per the master plan: tot lot, walkways, and additional seating.	2
Community Garden Development/ Acquisition Council District: 1	Develop community gardens in every community park.	2
Elderberry Park Phase III Council District: 1	Develop shade structure with picnic area.	2
Golden Poppy Park Phase II Council District: 1	Develop per master plan: jogging trail, adventure play area, swings, water mister, gazebo, and a basketball court.	2
Heron Park Phase III Council District: 1	Develop per master plan: shade structure, playground, amphitheatre, and landscaping.	2
Linden Park Phase II Council District: 1	Develop additional walkways, adventure playground, and picnic areas.	2
North Natomas Community Park Phase IV Council District: 1	Develop per the master plan: landscaping and a parking lot.	2
Park Site 3G (Skylark) Phase I Council District: 1	Develop park elements per master plan.	2
Regency Community Park Enhancements Council District: 1	Two additional walkways on the south park edge equally spaced at each intersection and a walkway along Salazar Way for student access to school.	2
San Juan Reservoir Park Phase II Council District: 1	Develop per the master plan by adding trails and landscaping.	2

PLANNING AREA 10 : North Natomas

OPPORTUNITY PROJECTS *continued*

Sorted by score

Project Type: Development (continued)

Sparrow Park Phase II Council District: 1	Develop per the master plan: walkways, tot lot, and an adventure playground.	2
Sycamore Park Phase II Council District: 1	Develop park elements: playground and picnic areas.	2
Willow Park Phase II Council District: 1	Develop park elements.	2
Witter Ranch Park Inlets Council District: 1	Add landscaping to the inlets near Witter Ranch Park.	2
Park Site 2D (Warbler) Council District: 1	Develop per master plan once approved.	1
Wild Rose Park Council District: 1	Develop per master plan.	1

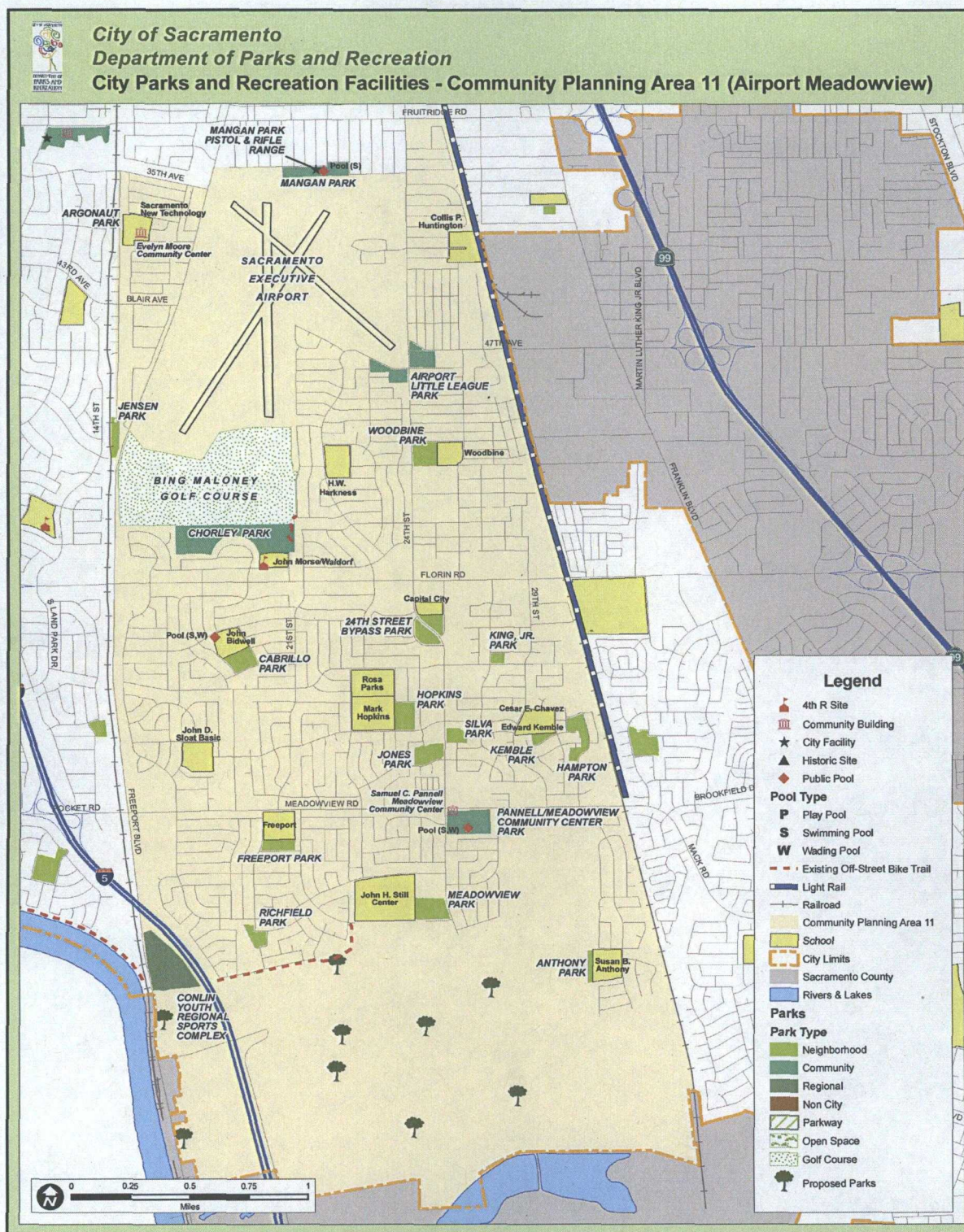
Project Type: Land Acquisition

Valley View Acres/Panhandle Area Land Acquisition Council District: 1	Acquire parkland for future neighborhood parks development once annexation occurs.	5
---	--	---

Project Type: Repair and Rehabilitation

Regency Park 4th R Drinking Fountain Council District: 1	Install drinking fountain onto existing sink to reduce cost and maintenance.	5
Heron 4th R Operation Shed Council District: 1	Develop a shed for storage at Heron 4th R to support operations.	2
Sycamore Park Centralized Irrigation Council District: 1	Install centralized irrigation system repeaters and related infrastructure.	2
Picnic Tables in Parks Council District: 1	Add picnic tables in every park as needed.	1

PLANNING AREA 11: Airport/Meadowview



PLANNING AREA 11: Airport/Meadowview

PRIORITY PROJECTS

Sorted by score

PROJECT NAME	DESCRIPTION	SCORE
Project Type: Repair and Rehabilitation		
Chorley Park Safety Implementation Plan Council District: 5	Execute the Parks and Recreation Safety Implementation Plan; repair restroom to meet ADA standards.	15
Martin Luther King, Jr. Park Safety Implementation Plan Council District: 8	Execute the Parks and Recreation Safety Implementation Plan.	15
Project Type: Development		
Meadowview Park Enhancements Council District: 8	Add picnic shelter and innovative park features.	10

OPPORTUNITY PROJECTS

Sorted by score

PROJECT NAME	DESCRIPTION	SCORE
Project Type: Community Facility		
Evelyn Moore Community Center Enhancements Council District: 4	Replace ceiling with a material for improved acoustics, provide additional parking in the location of the existing basketball court, ADA compliance, exterior lighting on building, new basketball court to the southeast.	7
Project Type: Development		
Airport Little League Park Dog Park/Community Garden Council District: 5	Add a small dog park and community garden to the undeveloped portion of this park. Provide paved striped parking lot for Tee Ball and Baseball Field on the East side of 24 th street.	8
Susan B. Anthony Park Enhancements Council District: 7	Plant new trees and add a picnic shelter, tables, and barbeque.	8
Community Garden Development/Acquisition Council Districts: 4, 5, 7, & 8	Develop community gardens in every community park.	7
Freeport Park Enhancements Council District: 8	Improve park by adding more trees, a volleyball court, picnic shelter with barbeque and park lighting.	7
Planning Area 11 Dog Park Development Council District: 8	Develop a dog park in Planning Area 11.	7

PLANNING AREA 11: Airport/Meadowview

OPPORTUNITY PROJECTS *continued*

Sorted by score

Project Type: *Development (continued)*

Argonaut Park Development Council District: 4	Develop per the revised master plan by moving basketball courts and adding a new picnic area, parking lot, lighting, walkways (baseball field to bleachers), 10-station fitness areas, a multi-use recreational trail with lighting, a concrete park sign, & two drinking fountains.	6
Hopkins Park Enhancements Council District: 8	Add new amenities such as a water spray feature, new trees, a picnic shelter and unique play feature.	6
Manuel Silva Park Phase II Council District: 8	Add a restroom/concession stand, park safety lighting, and other park improvements consistent with the master plan.	6
Richfield Park Phase II Council District: 8	Continue development of this park consistent with the master plan. Consider the addition of children's play area(s).	6
24th Street Bypass Park Phase II Council District: 5	Complete basic landscaping and community monument corner with seatwalls.	2

Project Type: *Land Acquisition*

Planning Area 11 Land Acquisition Council Districts: 4, 5, 7, & 8	Acquire community park land to meet parkland acreage needs, including Delta Shores area (CD 7).	9
Florin Road Light Rail Park Land Acquisition Council District: 5	Acquire and develop parks to serve new transit-oriented development at the light rail station.	8

Project Type: *Repair and Rehabilitation*

Pannell Meadowview Community Center Outdoor Area Improvements Council District: 8	Develop small play structure, upgrade basketball courts/drinking fountains, improve lighting system, install benches and shade structure over existing amphitheater, and a group friendly outdoor seating area.	9
Woodbine Park Rehabilitation Council District: 5	Renovate irrigation system and the existing park restrooms to current health, safety and ADA requirements. Replace wooden park sign with concrete one.	9
Meadowview Park Rehabilitation Council District: 8	Resurface and/or re-stripe existing basketball court(s) and rehabilitate existing restroom.	8
Airport Little League Landscaping & Paving Council District: 5	Landscape the undeveloped portion along 24th Avenue for beautification purposes, continuing landscaping started on 47th Avenue and pave the parking lot.	6

PLANNING AREA 11: Airport/Meadowview

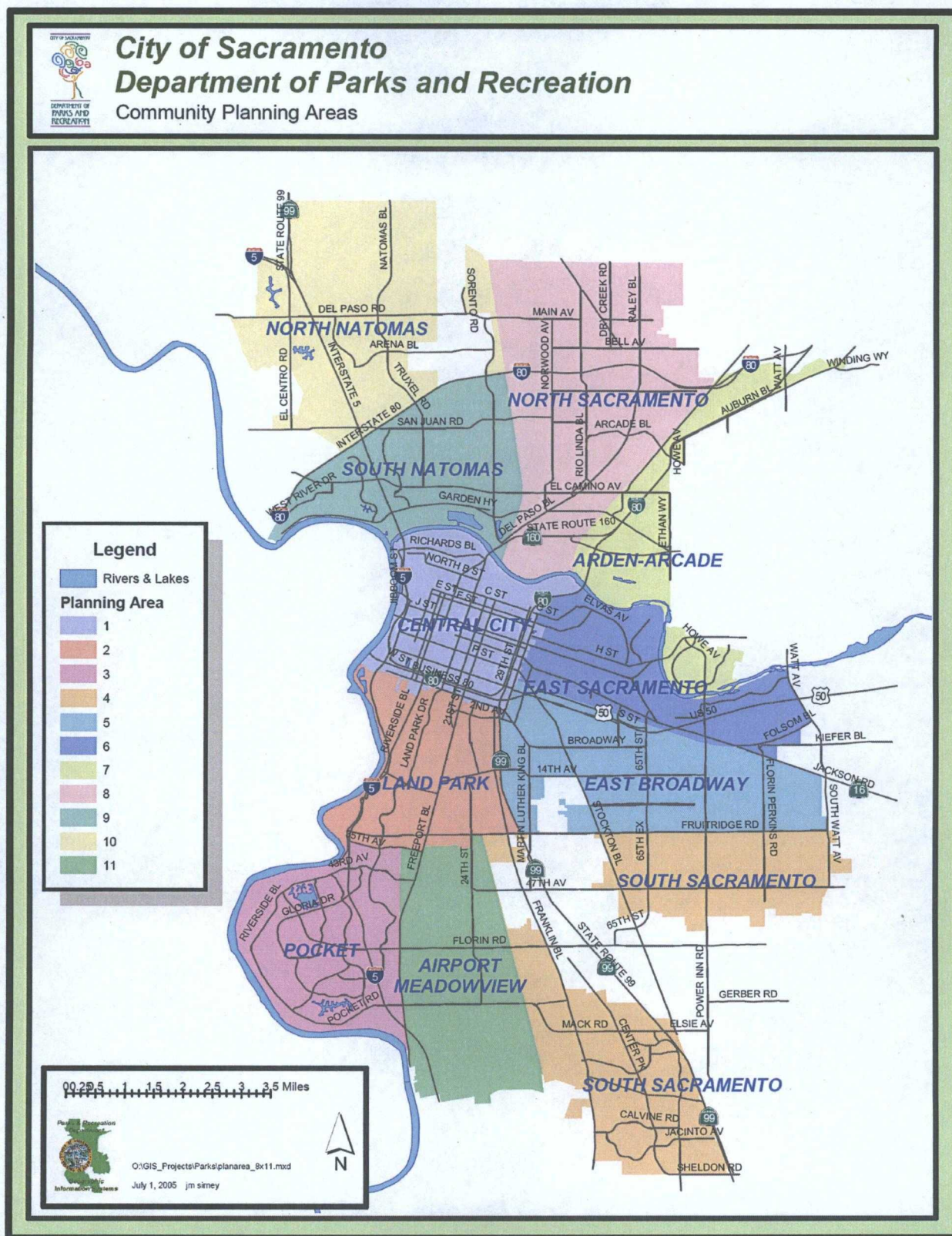
OPPORTUNITY PROJECTS *continued*

Sorted by score

Project Type: *Repair and Rehabilitation (continued)*

Cabrillo Park Rehabilitation Council District: 8	Add fibar to the playground; replace bleachers; improve and repair irrigation, picnic structure with barbeque; add signage; plant more trees, and more creative play features; and renovate the existing tennis court.	6
Kemble Park Sign Council District: 8	Replace wooden park sign with a concrete one.	5
Pannell/Meadowview Community Center Maintainable Islands Council District: 8	Remove the turf on the islands around the entrance sign, bus stop, pool fence; replace with decomposed granite or groundcover.	5
Picnic Tables in Parks Council Districts: 4, 5, 7, & 8	Add picnic tables in every park as needed.	5
Susan B. Anthony Park Rehabilitation Council District: 7	Consider renovation or reuse of the existing tennis courts. Repair the park irrigation system and provide overall park improvements, including a concrete park sign.	5
Hopkins Park Centralized Irrigation Council District: 8	Install centralized irrigation system repeaters and related infrastructure.	4
Manuel Silva Park Softball Field Improvements Council District: 8	Install 110 volt power to both backstops, taller bleachers, remove backstop side boards, pitcher/home plates in warm-up areas, storage container for equipment, fix bent locking arm to parking area from neighborhood.	4

Citywide/Regional Projects



Citywide/Regional Projects

PRIORITY PROJECTS

Sorted by score

PROJECT NAME	DESCRIPTION	SCORE
--------------	-------------	-------

Project Type: Land Acquisition

American River Parkway Land Acquisition	Acquire land along the American River for the American River Parkway and for the <u>use by the California Indian Heritage Museum.</u>	15
---	---	----

Delta Shores Regional Park	Acquire approximately 140 acres to develop the park and other regional park amenities through a community master plan process.	15
----------------------------	--	----

Project Type: Repair and Rehabilitation

Regional Sports Complexes	Develop regional tournament facilities for all ages with a wide range of activities/facilities, develop regional public/private partnerships at regional parks.	14
---------------------------	---	----

OPPORTUNITY PROJECTS

Sorted by score

PROJECT NAME	DESCRIPTION	SCORE
--------------	-------------	-------

Project Type: Development

Regional "Corporate" Picnic Areas	Develop several significant large picnic areas in regional parks to accommodate picnics for 500+ people; include shade structures, barbeques, and restrooms.	14
-----------------------------------	--	----

Regulation Sized Soccer Fields	Develop complexes of multiple regulation soccer fields for tournament level play. Consider developing them first in the Community Planning Areas which have a need for lighted soccer fields: Land Park, Pocket, South Sacramento, Arden-Arcade, and North Natomas.	14
--------------------------------	---	----

Ninos Parkway Development Phase III	Continue development of this parkway consistent with the master plan to include passive and active recreational amenities including picnic areas, a bike trail and bantam soccer fields.	13
-------------------------------------	--	----

Ueda Parkway Phase II	Develop additional recreation elements according to the adopted master plan.	13
-----------------------	--	----

Cultural Heritage Gardens	Create community cultural heritage gardens to reflect the diverse cultures in Sacramento.	12
---------------------------	---	----

Granite Regional Park Development	Develop unfunded elements of the master plan including the amphitheatre and tennis facility.	12
-----------------------------------	--	----

Citywide/Regional Projects

OPPORTUNITY PROJECTS *continued*

Sorted by score

Project Type: Development (continued)

Hansen Ranch Park Site Development	Complete park master plan and construct an interpretive facilities and recreational trails system. Install three new concrete park signs.	12
North Natomas Regional Park Future Phases	Develop this park, in conjunction with community partners, consistent with the master plan.	12
North Natomas Regional Park Regional Aquatic Center	Develop a new aquatic center to house year-round, multi-use aquatic programs for all ages and ability levels and a 50-meter, olympic-sized pool suitable for water polo with adequate restroom facilities and showers.	12
Teen Resource Centers	Develop partnerships with other agencies, schools, non-profit groups to develop teen resource centers.	12
Bill Conlin Youth Sports Complex Final Phase	Complete the final phase of this project by adding one baseball field, a maintenance yard, a shade structure, a tot lot play area, field lighting, and additional parking.	11
Camp Sacramento Enhancements	Add ADA accessible walkways, an ADA accessible restroom, an Airstream System for the kitchen. Construct a new restroom near the dining hall. Insulate 10 cabins.	11
Docks Area Promenade	Complete the promenade through the Docks area along the Sacramento River.	11
Granite Regional Park Enhancements	Develop a restroom in Phase I and/or Phase II area to improve usability; add a children's playground and bike racks to the entrance of the skatepark.	11
Sacramento Northern Parkway Extension	Develop the parkway to the north as a center piece of the Robla Community.	11
Sacramento River Parkway Development	Develop a riverfront parkway from Discovery Park to Miller Park consistent with the Sacramento Riverfront Master Plan. Also install comprehensive signage along all open segments of the parkway.	11
Sand Cove Regional Park	Plant new trees in and around the parking lot, add lights, bollards in parking lot, a picnic facility, river trail and viewing area at the park.	11

Citywide/Regional Projects

OPPORTUNITY PROJECTS *continued*

Sorted by score

Project Type: Development (continued)

Sustainability Projects	Implement Parks and Recreation Department Sustainability Plan 2008-2015.	11
Del Paso Regional Park Accessible Day Camp	Add an accessible day camp with covered picnic area, walkways and other improvements to the Sacramento Horseman's Association facility for an accessible day camp.	10
Citywide Park Lighting Enhancements	Evaluate and install enhanced park property lighting for safety citywide.	9
Del Paso Regional Park Enhancements	Develop a picnic area in Del Paso Park along Auburn Boulevard or Longview Drive; add a new sports facility as designated in the park master plan, and redesign the nature trail throughout the park. Replace both wooden park signs with concrete ones.	9
Petanque Court Development	Consider petanque courts within the city limits. Ideal locations may be at Sutter's Landing or Southside Park (in place of the existing unused bocce ball courts). Players stand throwing their "boules" as close as they can to the "jack."	9
Solar Powered Community Centers	Provide energy needed for community centers or clubhouses through solar energy.	9
Solar Powered Pools	Provide energy needed for cleaning/heating pools through solar energy.	9
Sutter's Landing Regional Park Development	Add permanent concession stand, fish cleaning station, and expand existing skatepark. Add urban art to park improvements.	9
BMX/Bike Park	Develop a major facility exclusively for recreational bicyclist use.	8
City Parks/Recreation Facilities Development of Youth Friendly Gathering Places	Provide outdoor gathering places for youth to socialize and interact at existing City parks and recreation facilities. One in each Council District, near Regional Transit. Sacramento's youth need places to go after school for constructive activities.	8
Robla Creek Restoration	Restore and add riparian enhancements along the Robla Creek from the Dry Creek Parkway through Hansen Ranch Park Site.	8
William Land Regional Park Enhancements	Add a dog park. Evaluate converting interior roads to pedestrian and bicycle trails.	8

Citywide/Regional Projects

OPPORTUNITY PROJECTS *continued*

Sorted by score

Project Type: *Development (continued)*

Glenbrook River Access Site Landscaping	Enhance landscaping to include azaleas/camellias.	7
Jacinto Creek Parkway Phase II	Continue development of this parkway consistent with the master plan to include passive recreational amenities.	7
Miller Regional Park Tot Lot/Adventure Play Area	Add a playground.	7
Del Paso Regional Park/Longview Oaks Nature Area Phase 2	Add pathways, benches, a small bridge and restore the WPA culvert.	6
Matsui Waterfront Park Historic Power Building	Develop the building and grounds of the historic PG&E power plant for public use.	6
Nature Area Interpretive Signage Program	Develop an interpretive signage program for various parks throughout the City.	6
Pickleball Court Development	Develop a pickleball court (same as a badminton court) in every Planning Area. Pickleball is played as a smaller scale form of tennis.	6
Ueda Parkway Management and Design	Develop a management plan and master plan for the Lower Dry Creek Parkway.	6

Project Type: *Land Acquisition*

California Garden Concept	Acquire land (200+ acres) for the "California Garden" concept, a multi-use garden facility.	14
Sutter's Landing Regional Park Acquisition	Acquire properties to the west of the existing park consistent with the "Expanded Vision" concept and new area master plan.	14
Two Rivers Trail Acquisition	Acquire properties east of Highway 160 for eastern segment of Two Rivers Trail.	14
Dry Creek Parkway Extension	Acquire 100+ acres east of Hansen Ranch Park to connect to the Sacramento County Dry Creek Parkway.	12
Open Space Acquisition	Acquire open space throughout the City consistent with the service level goals and policies in the 2005-2010 Parks and Recreation Master Plan.	12
Sacramento River Parkway	Continue efforts to acquire land for the Sacramento River Parkway in accordance with the parkway master plan, including for a fishing pier.	11

Citywide/Regional Projects

OPPORTUNITY PROJECTS *continued*

Sorted by score

Project Type: *Land Acquisition (continued)*

"Miles of Museums" Concept	Partner with, facilitate and coordinate the acquisition (and development) of the "Miles of Museums" concept along the Sacramento and American River corridors.	10
Garden Highway Bikeway Trail Acquisition	Acquire property to develop a bike trail that would go from Orchard Park to Sand Cove Regional Park.	9
Ultimate Frisbee Development	Identify a site and develop it as an "ultimate" playing field with lights.	7

Project Type: *Repair and Rehabilitation*

Camp Sacramento Rehabilitation	Renovate the mens' and womens' dormitories; renovate 10 cabins, the lodge floor, and the existing restrooms to make them ADA compliant.	14
William Land Regional Park Rehabilitation	Renovate all park restrooms, repair cobble curbing, existing picnic areas, park signage, fencing, amphitheater and archways. Resurface and re-stripe the basketball court. Install automated irrigation around amphitheater and improve the stage at Village Green.	11
Bannon Creek Park and Parkway Playground	Repair/Replace rotting wood play structure.	10
Garden Highway Bikeway Trail Rehabilitation	Repair the existing bike trail along the American River.	10
Sutter's Landing Regional Park Skate Park Renovation	Renovate/repair concrete, hole in roof, sump pump/floor drain, roll door at skatepark.	8
Garcia Bend Boat Launch Ramp Rehabilitation	Renovate the existing boat launch at Garcia Bend to maximize customer use and minimize silt build-up as much as possible.	7
Miller Regional Park Boat Launch Ramp Rehabilitation	Renovate the existing boat launch at Miller Regional Park to maximize customer use and minimize silt build-up.	7
Miller Regional Park Restroom Rehabilitation	Renovate park restrooms and add automatic locks.	7
Shade Structures over Play Areas Citywide	Add shade structures over play areas in all existing parks.	7
Bannon Creek Parkway Rehabilitation	Improve the parkway by removing invasive plants and trimming trees.	6
Del Paso Regional Park Softball Complex Improvements	Install a 20hp booster pump for efficient irrigation, fix tripping hazards for safety.	6

Citywide/Regional Projects

OPPORTUNITY PROJECTS *continued*

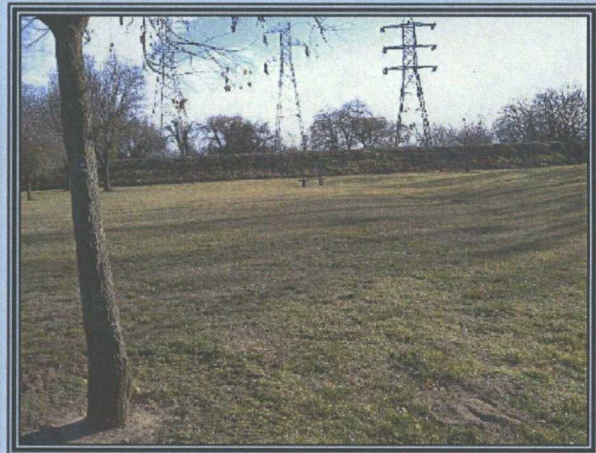
*Sorted by score**Project Type: Repair and Rehabilitation (continued)*

William Land Regional Park WPA Rock Garden Restoration	Restore the stream and garden as well as install a water feature.	6
Citywide Parks Water Conservation Program	Improve irrigation by the installation of booster pumps, backflow preventers, central control systems and other system components.	4
Citywide Cluster Trash Cans	To help park maintenance improve efficiency.	2
Pocket Canal Parkway Landscaping	Add landscaping to undeveloped areas of the Pocket Canal Parkway.	2



SCORING AND PRIORITIZATION PROCESS

*Planning Area 7, Arden/Arcade
University Park
Before*



*University Park
After*

**Table 21:
Parks and Recreation Programming Guide (PRPG)**

Background

In October 2001, the City Council adopted a process to develop an annual Parks and Recreation Programming Guide (PRPG) with scoring criteria in which the City Council and community would be strategically involved in both the development of an accurate project list and the priorities recommended in the PRPG. The PRPG is designed to identify, evaluate and prioritize park and recreation acquisition, repair/rehabilitation, development and community facility projects that are currently unfunded providing a comprehensive inventory of the parks and recreation needs in all of the City's neighborhoods. The top three projects are identified in each of the City's eleven Community Planning Areas as well as the top three "regional" projects citywide.

The Parks and Recreation Programming Guide is a document designed to prioritize unfunded and in some cases underfunded Capital Improvement Program (CIP) projects. As part of the overall **Park Development Process**, the PRPG sets annual priorities, which allows staff to manage resources, production capacity and operational/maintenance impacts, while still completing projects within a reasonable amount of time.

Development of the Parks and Recreation Programming Guide

STEP 1: NEW PROJECT INPUT/PROJECT LIST REVIEW	Objective: Develop complete project lists by planning area. Goals: 1. Provide an opportunity for the community, the CAC and City Council to add new projects. 2. Review of existing project lists and removal of funded projects from the previous year's PRPG.
STEP 2: COUNCIL REVIEW/REVISION OF PROJECT LISTS	Objective: To set meetings with Council District 1-8 offices and the Office of the Mayor for project list review/revision. Goals: 1. Working with the Council Offices, identify a complete list of park projects for their districts. 2. Ensure that all project descriptions are adequate and accurate. 3. Remove any projects which are duplicates or no longer a priority for the community. 4. Provide an opportunity for review of any previously scored PRPG projects based on new information that would result in a scoring change.
STEP 3: STAFF REVIEW AND SCORING OF PROJECT LISTS	Objective: An accurate listing of priority park projects in each of the 11 Community Planning Areas and Citywide Regional Projects. Goals: 1. Take lists generated by both the public and the Council Offices and sort them by Community Planning Area. 2. Using Council Approved Criteria, staff from the Department of Parks and Recreation will score all new projects and re-score those in which there is new information. 3. Project lists will be prepared with the top three projects on the Community Planning Area lists. The remainder of the projects will be recorded for future priority lists.
STEP 4: PUBLIC REVIEW OF PRPG PRIORITY LISTS	Objective: To give an opportunity for the public to comment and react to the Parks and Recreation Programming Guide and make appropriate recommendations. Goals: 1. Working with the Neighborhood Services Department, Parks and Recreation staff will present the project priority lists in each of the four Neighborhood Service areas. 2. Staff will make modifications based upon community input to each of the Community Planning Area lists. 3. Take updated Community Planning Area lists to each of the City Council offices for final comment before publishing the Draft Parks and Recreation Programming Guide.
STEP 5: FINALIZING THE PRPG	Objective: Finalize and Publish the Parks and Recreation Programming Guide Goals: 1. Publish the Draft Parks and Recreation Programming Guide and share with the City Council for final comment and modifications. 2. Staff will make final modifications and the Parks and Recreation Programming Guide will be brought before the City Council for approval.

(continued)

(Table 21, continued)

Parks and Recreation Programming Guide Criteria

The City Council approved the first set of PRPG criteria in October 2001. After preparing the 2002 Parks and Recreation Programming Guide and the 2004 Parks and Recreation Programming Guide, it became clear that some changes needed to be made to the process with regard to Regional Projects and Community Facility Projects. In May 2004, the City Council approved four new criteria for the PRPG for a total of 7 scoring criteria sets as follows:

- Land Acquisition,
- Repair and Rehabilitation,
- Development of New Parks or Existing Parks Beyond Minimum Standards,
- Community Facility,
- Regional Land Acquisition,
- Regional Repair and Rehabilitation, and
- Regional Development of New Parks or Existing Parks Beyond Minimum Standards

When the PRPG criteria was developed, the City Council directed that the criteria be simple, be more reflective of actual need while guaranteeing that such factors as health and safety issues, public use, at-risk neighborhoods, and facility deficiencies were considered. Each criteria set totals to 15 points and focuses on neighborhood community and/or regional need, whether or not the project is a public priority, whether or not there is funding available and whether or not the project is in an economically disadvantaged or at-risk area.

PRPG CRITERIA SUMMARY (as approved May 2004)**LAND ACQUISITION**

Impact on Acreage Deficiency	4 points max.
Site Significance	4 points max.
Suitability for Active/Passive Recreational Use	3 points max.
Land Availability	2 points max.
Cost Offsets/Partnerships	2 points max.

DEVELOPMENT

Park Acreage Deficiency	4 points max.
Park Facilities Deficiency	4 points max.
Public Priority/Site Significance	3 points max.
Cost Offsets/Partnerships	2 points max.
At-Risk or Economically Disadvantaged Area	2 points max.

REGIONAL ACQUISITION

Impact on Acreage Deficiency	4 points max.
Site Significance	4 points max.
Suitability for Active/Passive Recreational Use	3 points max.
Land Availability	2 points max.
Cost Offsets/Partnerships	2 points max.

REGIONAL DEVELOPMENT

Acreage/Facility Deficiency	4 points max.
Regional Significance	4 points max.
Cost Offsets/Partnerships	2 points max.
Economic Revitalization	3 points max.
Local Neighborhood/Business Support	2 points max.

REPAIR AND REHABILITATION

Health and Safety	3 points max.
Legal Mandates	2 points max.
Public Priority and Site Significance	3 points max.
Public Use	3 points max.
Cost Offsets/Partnerships	2 points max.
Facility Deficiencies by Planning Area	2 points max.

COMMUNITY FACILITY

Deficiency of Similar Type of Facility	4 points max.
Community Benefit	3 points max.
Public Priority	3 points max.
Cost Offsets/Partnerships	3 points max.
At-Risk or Economically Disadvantaged Area	2 points max.

REGIONAL REPAIR AND REHABILITATION

Health and Safety	3 points max.
Legal Mandates	2 points max.
Public Priority/Site Significance	3 points max.
Public Use	3 points max.
Cost Offsets/Partnerships	2 points max.
Facility Deficiencies Citywide/Planning Area	2 points max.



CITY OF SACRAMENTO
DEPARTMENT OF PARKS AND RECREATION

2008 PARKS AND RECREATION PROGRAMMING GUIDE (PRPG)
NEW PROJECT REQUEST

PROJECT NAME: _____

PROJECT LOCATION: _____ COUNCIL DISTRICT: _____

1) What category does this project fall under?

- ☐ LAND ACQUISITION (PURCHASE OF NEW PARKLAND)
☐ REPAIR AND REHABILITATION (REPAIR AND/OR REHABILITATION OF ANY EXISTING PARKS/RECREATION FACILITY)
☐ DEVELOPMENT OF NEW PARKS AND EXISTING PARKS BEYOND MINIMUM STANDARDS (DEVELOPMENT OF A NEW PARK/RECREATION FACILITY OR ENHANCEMENT I.E. ADDITIONAL PHASE/ELEMENTS OF AN EXISTING FACILITY)
☐ COMMUNITY FACILITY (DEVELOPMENT OF A NEW NEIGHBORHOOD/COMMUNITY BUILDING, SWIMMING POOL, ETC.)
☐ REGIONAL: ☐ ACQUISITION ☐ REPAIR/REHABILITATION ☐ DEVELOPMENT

2) Please describe how this facility will address a need in the community, i.e. Neighborhood/Business Support or Cultural/Historical/Natural Elements. (USE BACK FOR MORE INFORMATION)

3) Please describe the public priority or site significance of the project, i.e. Neighborhood/Business Support or Cultural/Historical/Natural Elements. (USE BACK FOR MORE INFORMATION)

4) Are there any cost offsets or partnerships in this project, i.e. outside funding, existing funding, in-kind support, or volunteer support? (USE BACK FOR MORE INFORMATION)

5) FOR ACQUISITION PROJECTS: Please discuss the availability of the proposed site and its suitability for active/passive recreational use. (USE BACK FOR MORE INFORMATION)

FOR REPAIR/REHABILITATION PROJECTS: Please discuss the public use of the facility. (USE BACK FOR MORE INFORMATION)

FOR DEVELOPMENT PROJECTS: Is the project in an economically disadvantaged area? (USE BACK FOR MORE INFORMATION)

CONTACT INFORMATION:

Name: _____ Phone #: _____

E-Mail: _____

PLEASE SEND FORMS TO:

Alicia Bramble, Landscape Student Intern
915 "I" Street, 5th Floor, Sacramento, CA 95814 (FAX: 808-8275)

FOR QUESTIONS:

Ph: 916-808-8671 e-mail: abramble@cityofsacramento.org

REVISED SUBMITTAL CUT-OFF DATE:

May 2, 2008

If the form is received after May 2, 2008, the project will be held for consideration in the 2010 PRPG.



CITY OF SACRAMENTO
2008 PARKS AND RECREATION PROGRAMMING GUIDE

CITY OF SACRAMENTO

DEPARTMENT OF
PARKS AND
RECREATION

CITY OWNED/CONTROLLED NEEDS ANALYSIS
PLANNING AREA 1: CENTRAL CITY

POPULATION	2005 48,980	2010 53,583
------------	----------------	----------------

RECREATION FACILITIES	MASTER PLAN APPROVED SERVICE LEVEL GOAL (1 per # of population)	SEPTEMBER 2008 INVENTORY	2005 NEED	2010 NEED
SPORTS FIELDS (use of some fields may preclude use of others due to overlays)				
SOFTBALL (TOTAL)	7,500	4	3	3
BASEBALL (TOTAL)	7,500	2	5	5
SOCCER (TOTAL)	7,500	5	2	2
LIGHTED SPORTS FIELDS				
LIGHTED SOFTBALL	45,000	4	-3	-3
LIGHTED BASEBALL	45,000	0	1	1
LIGHTED SOCCER	30,000	2	0	0
COURTS				
VOLLEYBALL	10,000	3	2	2
BASKETBALL (including youth and high school)	5,000	6	4	5
TENNIS	10,000	10	-5	-5
OTHER ACTIVE/PASSIVE RECREATIONAL FACILITIES				
OFF-LEASH DOG PARK	60,000	0	1	1
GROUP PICNIC AREAS (Class I)	30,000	2	0	0
PLAYGROUNDS: TOT LOTS & ADVENTURE PLAY AREAS	2,500	12	8	9
SKATEBOARD PARKS	35,000	1	0	1
COMMUNITY GARDENS	50,000	3	-2	-2
COMMUNITY FACILITIES				
PLAY POOL/WATER SPRAY FEATURE	15,000	0	3	4
OUTDOOR POOL COMPLEX (SWIMMING + WADING POOL)	30,000	2	0	0
COMMUNITY CENTER	30,000	3	-1	-1

PARK ACREAGE	ORDINANCE ACREAGE REQUIREMENTS (X per 1,000 population)	EXISTING ACREAGE	2005 ADDITIONAL ACREAGE NEEDED	2010 ADDITIONAL ACREAGE NEEDED
NEIGHBORHOOD	2.5	48.3	74.1	85.6
COMMUNITY	2.5	56.4	66.0	77.5

CITY OF SACRAMENTO

2008 PARKS AND RECREATION PROGRAMMING GUIDE



CITY OF SACRAMENTO

DEPARTMENT OF
PARKS AND
RECREATION

CITY OWNED/CONTROLLED NEEDS ANALYSIS

PLANNING AREA 2: LAND PARK

POPULATION	2005	2010
	37,888	37,511

RECREATION FACILITIES	MASTER PLAN APPROVED SERVICE LEVEL GOAL (1 per # of population)	SEPTEMBER 2008 INVENTORY	2005 NEED	2010 NEED
SPORTS FIELDS (use of some fields may preclude use of others due to overlays)				
SOFTBALL (TOTAL)	7,500	4	1	1
BASEBALL (TOTAL)	7,500	5	0	0
SOCCER (TOTAL)	7,500	7	-2	-2
LIGHTED SPORTS FIELDS				
LIGHTED SOFTBALL	45,000	0	1	1
LIGHTED BASEBALL	45,000	0	1	1
LIGHTED SOCCER	30,000	0	1	1
COURTS				
VOLLEYBALL	10,000	0	4	4
BASKETBALL (including youth and high school)	5,000	5	3	3
TENNIS	10,000	2	2	2
OTHER ACTIVE/PASSIVE RECREATIONAL FACILITIES				
OFF-LEASH DOG PARK	60,000	1	0	0
GROUP PICNIC AREAS (Class I)	30,000	2	-1	-1
PLAYGROUNDS: TOT LOTS & ADVENTURE PLAY AREAS	2,500	11	4	4
SKATEBOARD PARKS	35,000	0	1	1
COMMUNITY GARDENS	50,000	0	1	1
COMMUNITY FACILITIES				
PLAY POOLS/WATER SPRAY FEATURE	15,000	1	2	2
OUTDOOR POOL COMPLEX (SWIMMING + WADING POOL)	30,000	0	1	1
COMMUNITY CENTER	30,000	2	-1	-1

PARK ACREAGE	ORDINANCE ACREAGE REQUIREMENTS (X per 1,000 population)	EXISTING ACREAGE	2005 ADDITIONAL ACREAGE NEEDED	2010 ADDITIONAL ACREAGE NEEDED
NEIGHBORHOOD	2.5	47.8	47.0	46.0
COMMUNITY	2.5	43.3	51.5	50.5



CITY OF SACRAMENTO
2008 PARKS AND RECREATION PROGRAMMING GUIDE



DEPARTMENT OF
PARKS AND
RECREATION

**CITY OWNED/CONTROLLED NEEDS ANALYSIS
PLANNING AREA 3: POCKET**

POPULATION	2005 49,875	2010 49,587
------------	----------------	----------------

RECREATION FACILITIES	MASTER PLAN APPROVED SERVICE LEVEL GOAL (1 per # of population)	SEPTEMBER 2008 INVENTORY	2005 NEED	2010 NEED
SPORTS FIELDS (use of some fields may preclude use of others due to overlays)				
SOFTBALL (TOTAL)	7,500	3	4	4
BASEBALL (TOTAL)	7,500	1	6	6
SOCCER (TOTAL)	7,500	16	-9	-9
LIGHTED SPORTS FIELDS				
LIGHTED SOFTBALL	45,000	1	0	0
LIGHTED BASEBALL	45,000	0	1	1
LIGHTED SOCCER	30,000	1	1	1
COURTS				
VOLLEYBALL	10,000	1	4	4
BASKETBALL (including youth and high school)	5,000	3	7	7
TENNIS	10,000	6	-1	-1
OTHER ACTIVE/PASSIVE RECREATIONAL FACILITIES				
OFF-LEASH DOG PARK	60,000	0	1	1
GROUP PICNIC AREAS (Class I)	30,000	1	1	1
PLAYGROUNDS: TOT LOTS & ADVENTURE PLAY AREAS	2,500	18	2	2
SKATEBOARD PARKS	35,000	0	1	1
COMMUNITY GARDENS	50,000	0	1	1
COMMUNITY FACILITIES				
PLAY POOLS/WATER SPRAY FEATURE	15,000	0	3	3
OUTDOOR POOL COMPLEX (SWIMMING + WADING POOL)	30,000	0	2	2
COMMUNITY CENTER	30,000	0	2	2

PARK ACREAGE	ORDINANCE ACREAGE REQUIREMENTS (X per 1,000 population)	EXISTING ACREAGE	2005 ADDITIONAL ACREAGE NEEDED	2010 ADDITIONAL ACREAGE NEEDED
NEIGHBORHOOD	2.5	66.3	58.4	57.7
COMMUNITY	2.5	95.7	29.0	28.3



CITY OF SACRAMENTO
2008 PARKS AND RECREATION PROGRAMMING GUIDE



DEPARTMENT OF
PARKS AND
RECREATION

**CITY OWNED/CONTROLLED NEEDS ANALYSIS
PLANNING AREA 4: SOUTH SACRAMENTO**

POPULATION	2005	2010
	66,220	68,921

RECREATION FACILITIES	MASTER PLAN APPROVED SERVICE LEVEL GOAL (1 per # of population)	SEPTEMBER 2008 INVENTORY	2005 NEED	2010 NEED
SPORTS FIELDS (use of some fields may preclude use of others due to overlays)				
SOFTBALL (TOTAL)	7,500	8	1	1
BASEBALL (TOTAL)	7,500	4	5	5
SOCCER (TOTAL)	7,500	18	-9	-9
LIGHTED SPORTS FIELDS				
LIGHTED SOFTBALL	45,000	0	1	2
LIGHTED BASEBALL	45,000	1	0	1
LIGHTED SOCCER	30,000	1	1	1
COURTS				
VOLLEYBALL	10,000	7	0	0
BASKETBALL (including youth and high school)	5,000	10	3	4
TENNIS	10,000	8	-1	-1
OTHER ACTIVE/PASSIVE RECREATIONAL FACILITIES				
OFF-LEASH DOG PARK	60,000	1	0	0
GROUP PICNIC AREAS (Class I)	30,000	7	-5	-5
PLAYGROUNDS: TOT LOTS & ADVENTURE PLAY AREAS	2,500	26	0	2
SKATEBOARD PARKS	35,000	0	2	2
COMMUNITY GARDENS	50,000	1	0	0
COMMUNITY FACILITIES				
PLAY POOLSWATER SPRAY FEATURE	15,000	0	4	5
OUTDOOR POOL COMPLEX (SWIMMING + WADING POOL)	30,000	1	1	1
COMMUNITY CENTER	30,000	1	1	1

PARK ACREAGE	ORDINANCE ACREAGE REQUIREMENTS (X per 1,000 population)	EXISTING ACREAGE	2005 ADDITIONAL ACREAGE NEEDED	2010 ADDITIONAL ACREAGE NEEDED
NEIGHBORHOOD	2.5	75.8	89.8	96.6
COMMUNITY	2.5	121.8	43.8	50.5



CITY OF SACRAMENTO
2008 PARKS AND RECREATION PROGRAMMING GUIDE



DEPARTMENT OF
PARKS AND
RECREATION

**CITY OWNED/CONTROLLED NEEDS ANALYSIS
PLANNING AREA 5: EAST BROADWAY**

POPULATION	2005 36,488	2010 36,762
------------	----------------	----------------

RECREATION FACILITIES	MASTER PLAN APPROVED SERVICE LEVEL GOAL (1 per # of population)	SEPTEMBER 2008 INVENTORY	2005 NEED	2010 NEED
SPORTS FIELDS (use of some fields may preclude use of others due to overlays)				
SOFTBALL (TOTAL)	7,500	5	0	0
BASEBALL (TOTAL)	7,500	5	0	0
SOCCER (TOTAL)	7,500	8	-3	-3
LIGHTED SPORTS FIELDS				
LIGHTED SOFTBALL	45,000	0	1	1
LIGHTED BASEBALL	45,000	1	0	0
LIGHTED SOCCER	30,000	2	-1	-1
COURTS				
VOLLEYBALL	10,000	2	2	2
BASKETBALL (including youth and high school)	5,000	9.5	-2	-2
TENNIS	10,000	4	0	0
OTHER ACTIVE/PASSIVE RECREATIONAL FACILITIES				
OFF-LEASH DOG PARK	60,000	1	0	0
GROUP PICNIC AREAS (Class I)	30,000	3	-2	-2
PLAYGROUNDS: TOT LOTS & ADVENTURE PLAY AREAS	2,500	15	0	0
SKATEBOARD PARKS	35,000	1	0	0
COMMUNITY GARDENS	50,000	0	1	1
COMMUNITY FACILITIES				
PLAY POOLSWATER SPRAY FEATURE	15,000	2	0	0
OUTDOOR POOL COMPLEX (SWIMMING + WADING POOL)	30,000	1	0	0
COMMUNITY CENTER	30,000	2	-1	-1

PARK ACREAGE	ORDINANCE ACREAGE REQUIREMENTS (X per 1,000 population)	EXISTING ACREAGE	2005 ADDITIONAL ACREAGE NEEDED	2010 ADDITIONAL ACREAGE NEEDED
NEIGHBORHOOD	2.5	42.3	48.9	49.6
COMMUNITY	2.5	57.0	34.2	34.9



CITY OF SACRAMENTO
2008 PARKS AND RECREATION PROGRAMMING GUIDE

CITY OF SACRAMENTO

DEPARTMENT OF
PARKS AND
RECREATION

CITY OWNED/CONTROLLED NEEDS ANALYSIS
PLANNING AREA 6: EAST SACRAMENTO

POPULATION	2005	2010
	37,590	37,403

RECREATION FACILITIES	MASTER PLAN APPROVED SERVICE LEVEL GOAL (1 per # of population)	SEPTEMBER 2008 INVENTORY	2005 NEED	2010 NEED
SPORTS FIELDS (use of some fields may preclude use of others due to overlays)				
SOFTBALL (TOTAL)	7,500	5	0	0
BASEBALL (TOTAL)	7,500	5	0	0
SOCCER (TOTAL)	7,500	9	-4	-4
LIGHTED SPORTS FIELDS				
LIGHTED SOFTBALL	45,000	0	1	1
LIGHTED BASEBALL	45,000	0	1	1
LIGHTED SOCCER	30,000	0	1	1
COURTS				
VOLLEYBALL	10,000	3	1	1
BASKETBALL (including youth and high school)	5,000	3	5	4
TENNIS	10,000	4	0	0
OTHER ACTIVE/PASSIVE RECREATIONAL FACILITIES				
OFF-LEASH DOG PARK	60,000	1	0	0
GROUP PICNIC AREAS (Class I)	30,000	1	0	0
PLAYGROUNDS: TOT LOTS & ADVENTURE PLAY AREAS	2,500	8	7	7
SKATEBOARD PARKS	35,000	0	1	1
COMMUNITY GARDENS	50,000	0	1	1
COMMUNITY FACILITIES				
PLAY POOLS/WATER SPRAY FEATURE	15,000	1	2	1
OUTDOOR POOL COMPLEX (SWIMMING + WADING POOL)	30,000	1	0	0
COMMUNITY CENTER	30,000	0	1	1

PARK ACREAGE	ORDINANCE ACREAGE REQUIREMENTS (X per 1,000 population)	EXISTING ACREAGE	2005 ADDITIONAL ACREAGE NEEDED	2010 ADDITIONAL ACREAGE NEEDED
NEIGHBORHOOD	2.5	31.6	62.4	61.9
COMMUNITY	2.5	19.9	74.0	73.6



CITY OF SACRAMENTO
2008 PARKS AND RECREATION PROGRAMMING GUIDE

CITY OF SACRAMENTO

DEPARTMENT OF
PARKS AND
RECREATION

CITY OWNED/CONTROLLED NEEDS ANALYSIS
PLANNING AREA 7: ARDEN ARCADE

POPULATION	2005	2010
	15,310	15,249

RECREATION FACILITIES	MASTER PLAN APPROVED SERVICE LEVEL GOAL (1 per # of population)	SEPTEMBER 2008 INVENTORY	2005 NEED	2010 NEED
SPORTS FIELDS (use of some fields may preclude use of others due to overlays)				
SOFTBALL (TOTAL)	7,500	4	-2	-2
BASEBALL (TOTAL)	7,500	1	1	1
SOCCER (TOTAL)	7,500	1	1	1
LIGHTED SPORTS FIELDS				
LIGHTED SOFTBALL	45,000	4	-4	-4
LIGHTED BASEBALL	45,000	1	-1	-1
LIGHTED SOCCER	30,000	0	1	1
COURTS				
VOLLEYBALL	10,000	4	-2	-2
BASKETBALL (including youth and high school)	5,000	0	3	3
TENNIS	10,000	0	2	2
OTHER ACTIVE/PASSIVE RECREATIONAL FACILITIES				
OFF-LEASH DOG PARK	60,000	0	0	0
GROUP PICNIC AREAS (Class I)	30,000	2	-1	-1
PLAYGROUNDS: TOT LOTS & ADVENTURE PLAY AREAS	2,500	4	2	2
SKATEBOARD PARKS	35,000	0	0	0
COMMUNITY GARDENS	50,000	0	0	0
COMMUNITY FACILITIES				
PLAY POOLSWATER SPRAY FEATURE	15,000	0	1	1
OUTDOOR POOL COMPLEX (SWIMMING + WADING POOL)	30,000	0	1	1
COMMUNITY CENTER	30,000	0	1	1

PARK ACREAGE	ORDINANCE ACREAGE REQUIREMENTS (X per 1,000 population)	EXISTING ACREAGE	2005 ADDITIONAL ACREAGE NEEDED	2010 ADDITIONAL ACREAGE NEEDED
NEIGHBORHOOD	2.5	8.4	29.88	29.72
COMMUNITY	2.5	10	28.28	28.12



CITY OF SACRAMENTO
2008 PARKS AND RECREATION PROGRAMMING GUIDE



**CITY OWNED/CONTROLLED NEEDS ANALYSIS
PLANNING AREA 8: NORTH SACRAMENTO**

POPULATION	2005 47,645	2010 49,873
------------	----------------	----------------

DEPARTMENT OF
PARKS AND
RECREATION

RECREATION FACILITIES	MASTER PLAN APPROVED SERVICE LEVEL GOAL (1 per # of population)	SEPTEMBER 2008 INVENTORY	2005 NEED	2010 NEED
SPORTS FIELDS (use of some fields may preclude use of others due to overlays)				
SOFTBALL (TOTAL)	7,500	8	-2	-1
BASEBALL (TOTAL)	7,500	4	2	3
SOCCER (TOTAL)	7,500	11	-5	-4
LIGHTED SPORTS FIELDS				
LIGHTED SOFTBALL	45,000	4	-3	-3
LIGHTED BASEBALL	45,000	1	0	0
LIGHTED SOCCER	30,000	3	-1	-1
COURTS				
VOLLEYBALL	10,000	0	5	5
BASKETBALL (including youth and high school)	5,000	11	-1	-1
TENNIS	10,000	1	4	4
OTHER ACTIVE/PASSIVE RECREATIONAL FACILITIES				
OFF-LEASH DOG PARK	60,000	0	1	1
GROUP PICNIC AREAS (Class I)	30,000	2	0	0
PLAYGROUNDS: TOT LOTS & ADVENTURE PLAY AREAS	2,500	22	-3	-2
SKATEBOARD PARKS	35,000	3	-2	-2
COMMUNITY GARDENS	50,000	0	1	1
COMMUNITY FACILITIES				
PLAY POOLSWATER SPRAY FEATURE	15,000	2	1	1
OUTDOOR POOL COMPLEX (SWIMMING + WADING POOL)	30,000	1	1	1
COMMUNITY CENTER	30,000	3	-1	-1

PARK ACREAGE	ORDINANCE ACREAGE REQUIREMENTS (X per 1,000 population)	EXISTING ACREAGE	2005 ADDITIONAL ACREAGE NEEDED	2010 ADDITIONAL ACREAGE NEEDED
NEIGHBORHOOD	2.5	70.0	49.1	54.7
COMMUNITY	2.5	71.4	47.7	53.3



CITY OF SACRAMENTO
2008 PARKS AND RECREATION PROGRAMMING GUIDE

CITY OF SACRAMENTO

DEPARTMENT OF
PARKS AND
RECREATION

**CITY OWNED/CONTROLLED NEEDS ANALYSIS
PLANNING AREA 9: SOUTH NATOMAS**

POPULATION	2005	2010
	39,905	40,324

	MASTER PLAN APPROVED SERVICE LEVEL GOAL (1 per # of population)	SEPTEMBER 2008 INVENTORY	2005 NEED	2010 NEED
RECREATION FACILITIES				
SPORTS FIELDS (use of some fields may preclude use of others due to overlays)				
SOFTBALL (TOTAL)	7,500	7	-2	-2
BASEBALL (TOTAL)	7,500	6	-1	-1
SOCCER (TOTAL)	7,500	13	-8	-8
LIGHTED SPORTS FIELDS				
LIGHTED SOFTBALL	45,000	1	0	0
LIGHTED BASEBALL	45,000	0	1	1
LIGHTED SOCCER	30,000	1	0	0
COURTS				
VOLLEYBALL	10,000	7	-3	-3
BASKETBALL (including youth and high school)	5,000	2	6	6
TENNIS	10,000	4	0	0
OTHER ACTIVE/PASSIVE RECREATIONAL FACILITIES				
OFF-LEASH DOG PARK	60,000	1	0	0
GROUP PICNIC AREAS (Class I)	30,000	6	-5	-5
PLAYGROUNDS: TOT LOTS & ADVENTURE PLAY AREAS	2,500	16	0	0
SKATEBOARD PARKS	35,000	1	0	0
COMMUNITY GARDENS	50,000	1	0	0
COMMUNITY FACILITIES				
PLAY POOL/WATER SPRAY FEATURE	15,000	0	3	3
OUTDOOR POOL COMPLEX (SWIMMING + WADING POOL)	30,000	1	0	0
COMMUNITY CENTER	30,000	1	0	0

	ORDINANCE ACREAGE REQUIREMENTS (X per 1,000 population)	EXISTING ACREAGE	2005 ADDITIONAL ACREAGE NEEDED	2010 ADDITIONAL ACREAGE NEEDED
PARK ACREAGE				
NEIGHBORHOOD	2.5	72.3	27.5	28.5
COMMUNITY	2.5	56.2	43.5	44.6



CITY OF SACRAMENTO
2008 PARKS AND RECREATION PROGRAMMING GUIDE

CITY OF SACRAMENTO

DEPARTMENT OF
PARKS AND
RECREATION

**CITY OWNED/CONTROLLED NEEDS ANALYSIS
PLANNING AREA 10: NORTH NATOMAS**

POPULATION	2005	2010
	34,405	38,857

RECREATION FACILITIES	MASTER PLAN APPROVED SERVICE LEVEL GOAL (1 per # of population)	SEPTEMBER 2008 INVENTORY	2005 NEED	2010 NEED
SPORTS FIELDS (use of some fields may preclude use of others due to overlays)				
SOFTBALL (TOTAL)	7,500	5	0	0
BASEBALL (TOTAL)	7,500	5	0	0
SOCCER (TOTAL)	7,500	35	-30	-30
LIGHTED SPORTS FIELDS				
LIGHTED SOFTBALL	45,000	0	1	1
LIGHTED BASEBALL	45,000	1	0	0
LIGHTED SOCCER	30,000	1	0	0
COURTS				
VOLLEYBALL	10,000	21	-18	-17
BASKETBALL (including youth and high school)	5,000	8.5	-2	-1
TENNIS	10,000	6	-3	-2
OTHER ACTIVE/PASSIVE RECREATIONAL FACILITIES				
OFF-LEASH DOG PARK	60,000	2	-1	-1
GROUP PICNIC AREAS (Class I)	30,000	13	-12	-12
PLAYGROUNDS: TOT LOTS & ADVENTURE PLAY AREAS	2,500	31	-17	-15
SKATEBOARD PARKS	35,000	2	-1	-1
COMMUNITY GARDENS	50,000	0	1	1
COMMUNITY FACILITIES				
PLAY POOLS/WATER SPRAY FEATURE	15,000	0	2	3
OUTDOOR POOL COMPLEX (SWIMMING + WADING POOL)	30,000	0	1	1
COMMUNITY CENTER	30,000	0	1	1

PARK ACREAGE	ORDINANCE ACREAGE REQUIREMENTS (X per 1,000 population)	EXISTING ACREAGE	2005 ADDITIONAL ACREAGE NEEDED	2010 ADDITIONAL ACREAGE NEEDED
NEIGHBORHOOD	2.5	195.2	-109.1	-98.0
COMMUNITY	2.5	223.5	-137.5	-126.4



CITY OF SACRAMENTO
2008 PARKS AND RECREATION PROGRAMMING GUIDE

CITY OF SACRAMENTO

DEPARTMENT OF
PARKS AND
RECREATION

CITY OWNED/CONTROLLED NEEDS ANALYSIS
PLANNING AREA 11: AIRPORT/MEADOWVIEW

POPULATION	2005	2010
	32,434	33,782

	MASTER PLAN APPROVED SERVICE LEVEL GOAL (1 per # of population)	SEPTEMBER 2008 INVENTORY	2005 NEED	2010 NEED
RECREATION FACILITIES				
SPORTS FIELDS (use of some fields may preclude use of others due to overlays)				
SOFTBALL (TOTAL)	7,500	7	-3	-2
BASEBALL (TOTAL)	7,500	7	-3	-2
SOCCER (TOTAL)	7,500	6	-2	-1
LIGHTED SPORTS FIELDS				
LIGHTED SOFTBALL	45,000	0	1	1
LIGHTED BASEBALL	45,000	2	-1	-1
LIGHTED SOCCER	30,000	1	0	0
COURTS				
VOLLEYBALL	10,000	1	2	2
BASKETBALL (including youth and high school)	5,000	5.5	1	1
TENNIS	10,000	4	-1	-1
OTHER ACTIVE/PASSIVE RECREATIONAL FACILITIES				
OFF-LEASH DOG PARK	60,000	0	1	1
GROUP PICNIC AREAS (Class I)	30,000	1	0	0
PLAYGROUNDS: TOT LOTS & ADVENTURE PLAY AREAS	2,500	19	-6	-5
SKATEBOARD PARKS	35,000	0	1	1
COMMUNITY GARDENS	50,000	0	1	1
COMMUNITY FACILITIES				
PLAY POOL/WATER SPRAY FEATURE	15,000	0	2	2
OUTDOOR POOL COMPLEX (SWIMMING + WADING POOL)	30,000	2	-1	-1
COMMUNITY CENTER	30,000	1	0	0

PARK ACREAGE	ORDINANCE ACREAGE REQUIREMENTS (X per 1,000 population)	EXISTING ACREAGE	2005 ADDITIONAL ACREAGE NEEDED	2010 ADDITIONAL ACREAGE NEEDED
NEIGHBORHOOD	2.5	73.1	8.0	11.3
COMMUNITY	2.5	47.8	33.3	36.6



CITY OF SACRAMENTO
2008 PARKS AND RECREATION PROGRAMMING GUIDE

CITY OF SACRAMENTO



DEPARTMENT OF
PARKS AND
RECREATION

**CITY OWNED/CONTROLLED NEEDS ANALYSIS
CITYWIDE/REGIONAL**

	2005	2010
POPULATION *	446,740	463,470

REGIONAL PARK ACREAGE NEED	ORDINANCE ACREAGE REQUIREMENTS (X PER 1,000 POPULATION)	EXISTING ACREAGE	2005 NEED	2010 NEED
REGIONAL PARK ACREAGE	8.0	1,643.5	1930.46	2064.30

REGIONAL TRAIL/BIKEWAY NEED	2030 GENERAL PLAN REQUIREMENTS (X LINEAR MILES PER 1,000 POPULATION)	EXISTING TRAILS/ BIKEWAYS	2005 NEED	2010 NEED
REGIONAL TRAILS/BIKEWAYS (on- and off-street)	0.5	59.8	N/A	171.9

NATURE INTERPRETATION CENTERS	2030 GENERAL PLAN REQUIREMENTS PER REGION	EXISTING	2005 NEED	2010 NEED
NATURE INTERPRETATION CENTERS NEED	2	0	N/A	2



ATTACHMENTS

*Planning Area II, Airport/Meadowview
Manuel Silva
Softball Fields
Before*



*Manuel Silva
Softball Fields
After*

PRPG GLOSSARY

Access: The ability to travel to, approach, enter, or use a park and/or recreation site or facility within a City or community.

ADA: Americans with Disabilities Act (Federal law).

Adventure Play Areas: See **Playgrounds**.

Amenities: Park features which increase the use and enjoyment of park sites. Amenities may include, but are not limited to, features such as sports fields, courts, playgrounds, community centers, group picnic areas (which may be reserved), restrooms, field lighting, or concession stands.

At-Risk: Being endangered, as from exposure to disease or from a lack of parental or familial guidance and proper health care.

Baseline: Level of service that can be provided with current resources, considered the lowest acceptable level of citizen satisfaction – reflects the anticipated costs of carrying out the current level of service or activities as authorized by the governing body.

Buffer: A transition area between incompatible land uses designed for protection of a resource. Buffer widths vary, depending on the intended function of the buffer.

Capital Improvements: Physical improvements to physical assets that are permanently fixed to land and provide safe and usable facilities.

Community Center, also known as Community Building or Multi-Use Recreation Complex: Service Level Goal of one center per Community Planning Area. A 10,000 - 30,000 square foot facility which serves the population within a two to three mile radius.

Community Facility projects: Development of a new clubhouse, community building, swimming pool, restroom, art, facility, or buildings.

Community Gardens: A public garden which serves to improve the quality of life for people by providing a catalyst for neighborhood and community development, stimulating social interaction, encouraging self-reliance, beautifying neighborhoods, producing nutritious food, reducing family food budgets, conserving resources, and creating opportunities for recreation, exercise, therapy, and education. Service Level Goal of 1/50,000 Sacramento residents.

Community Planning Areas: Geographic sub-regions of the City designated for physical and services planning purposes.

Community Park: A parkland or facility developed primarily to meet the requirements of a large portion of the City. In addition to neighborhood park amenities, a community park may include: a large group picnic area with shade structure, a community garden, a neighborhood/community

Skate Park, restroom, on-site parking, bicycle trail, a nature area, a dog park, lighted sport fields, or sport courts. Specialized facilities may also be found in a community park including: a community center, a water play area, and/or a swimming pool. Some of the smaller community parks may be dedicated to one use, and some elements of the park may be leased to community groups. Primary service area is within two to three miles, a drivable distance from several neighborhoods, and the park is between 10 - 60 acres. Service Level Goal of 2.5 acres/1,000 Sacramento residents.

Continuum of Care: A community effort designed to help communities develop the capacity to envision, organize, and plan long term solutions to addressing the problem of housing and homelessness in the community.

Council Districts: Geographic sub-regions of City established for purposes of election of City Council members.

Decomposed Granite (DG): Commonly used for sidewalks, gardens, pathways, patios, trails, playing fields, golf courses, and any area where stone or aggregates may be used. DG begins in the form of granite rock and then decomposes into a smaller form or gravel which is safe for the environment.

Deficiency/Need: The difference between existing resources and the achievement of Service Level Goals.

Detention Basins: Basins designed to retain or detain storm water runoff in order to provide flood control and/or urban runoff pollutant removal.

Development of New Parks and Existing Parks Beyond Minimum Standards: Development of a park or a trail or an enhancement according to the site-specific master plan, i.e. additional phase/elements of an existing park/recreational trail or development of a plan, such as a trail maintenance plan.

Economically Disadvantaged: Determined to be low income according to the latest available data.

Environmental Sustainability: The location, design, reconstruction, construction, renovation, operation, and maintenance of built environments that are models of energy, water, and materials efficiency, while providing healthy, productive, and comfortable habitable environments and long term benefits.

Facility Need: This scoring criterion's level of need depends on the Needs Analysis and the particular project. For example, if a Community Planning Area does not have enough soccer fields based on the Needs Analysis and the project being scored would construct a soccer field, it could score high (four points) depending upon the size of the need within the Community Planning Area.

Hardscape: The inanimate elements of landscaping.

Infrastructure: Physical public services, facilities, and resources required for an activity or park site element.

Interpretive Signage: A media in which historical or natural history objects/ideas are displayed imparting messages relative to certain themes with a purpose of educating and inspiring the visitor.

Joint Use: When two or more public, private, or non-profit entities enter into joint or cooperative action in specific areas or for specific purposes.

Land Acquisition: Acquisition of interest in real property, usually fee title or easement.

Land Suitability for Active/Passive Recreational Use: Items taken into consideration include, but are not limited to, adjacent land uses, flood rating, soil suitability, and infrastructure.

Multi-Use Recreation Complex: see **Community Center**.

Needs Analysis: A comparison between the approved service level goals approved by City Council and the inventory of the Sacramento Parks and Recreation system, which includes City-owned/controlled, school, and other public facilities in the Sacramento city limits.

Neighborhood Center/Clubhouse: Service Level Goal of one center per Sacramento neighborhood.

Neighborhood Park: A park or land intended to be used primarily by the people who live nearby, or within walking/bicycling distance of the park. Some neighborhood parks are situated adjacent to an elementary school and improvements are usually oriented toward the recreation needs of children. Park amenities may include: a tot lot, an adventure area, unlighted sport fields or sport courts, and/or a group picnic area, and parking limited to on street. Restrooms are not an amenity included in this park category. Primary service area is within a ½ mile and the area is five to 10 acres. Service Level Goal of 2.5 acres/1,000 Sacramento residents.

Neighborhood Serving Urban Plaza: A specialized neighborhood parkland or facility to be used primarily by persons living, working or visiting nearby. Likely more appropriate for areas of denser urban and mixed use development. Amenities may include: smaller scale features such as community gardens, children's play areas, sitting areas, tables, fountains, hardscape, public art, walkways, and landscaping. Primary service area is within a ½ mile and the area is less than five acres. Refer also to Small Public Places.

Open Space: Land that is set aside for one or several of the following reasons: for preservation of natural resources (e.g. vegetation communities, fish, wildlife, and associated habitats); for conservation of the managed production of resources (e.g. agriculture lands, rangelands, woodlands, aggregate deposits); for outdoor recreation; for public health and safety (e.g. water quality basins, flood easements, river levees); for public services (e.g. utility easements, community gardens); to enhance the City's environmental amenities; or for urban form/scenic resources (e.g. community separators/gateways, greenways/highway corridors, and urban reserves).

Opportunity Project: Any project not ranked high enough to be a priority project; if a funding source is not found, the project will remain in the PRPG until a funding source is identified.

Parkway: Similar to open space areas because they also have limited recreational uses. They are used primarily as corridors for pedestrians and bicyclists; linking residential areas to schools, parks, and trail systems. Parkways are typically linear and narrow and may be situated along a waterway, abandoned railroad, or other common corridor. (Same term may at times be used to describe other types of transportation corridors without recreational use.)

Passive Recreation: A park and recreation area or program that does not require the use of organized play areas and where passive uses are provided for, emphasizing opportunities for activities such as walking, picnicking, and environmental education.

Plaza: A park, usually in an urban setting, that serves as a public gathering place. It is typically developed with more pavement (hardscape) than other parks.

Playgrounds, Tot Lots, and Adventure Play Areas: A tot lot is to serve those between the ages of two and five and is a minimum of 3,500 square feet. An adventure play area serves those between the ages of five and 12 and is a minimum of 5,000 square feet. Service Level Goal of 1/2,500 Sacramento residents.

Play Pool: A shallow pool designed for small children's use. May be in conjunction with other pool structures.

Post and Cable: A type of fencing.

Priority Project: The top three scoring projects in each Community Planning Area and in the Regional category.

Regional Park: Serves the city and beyond the city limits. Service Level Goal of 8 acres/1,000 Sacramento residents. A park or facility developed with a wide range of amenities, which are not found in neighborhood or community parks. In addition to those amenities found in neighborhood and community parks, improvements may include: a golf course, marina, amusement area, zoo, and other region-wide attractions. Some facilities in the park may be under lease to community groups.

Regional System: A vision and plan for parks and facilities on a regional scale as destination attractions that will provide, among other things, an interconnected system of open space, bikeways, and trails contributing to the protection of natural resources.

Repair and Rehabilitation project: Repair, rehabilitation, and/or improvements to any *existing* park, park amenity, community facility, irrigation system, restroom, or recreational trail. *Not an expansion.*

Riparian: Relating to the land and associated vegetation next to a stream, river, or lake that is influenced by the adjacent freshwater.

Service Level Goals: Goals for levels of services to strive to reach which establish general expectations for services the City will take responsibility to provide, either directly or in partnership with other entities. The current Department Service Level Categories are: Recreation Facilities, Center Buildings, Maintenance (Parks and Trees), and Park Acreage. Service Level Goals are approved by City Council through the General Plan and Parks and Recreation Master Plan.

Small Public Places: Small neighborhood parks and plazas from 1/18th to five acres in size, to be located in designated high-density areas and park deficient neighborhoods throughout the City. Small Public Places are intended to provide relief from the hardscape and intensity of City-life serving as positive places to gather and recreate where land is in short supply. Refer also to Neighborhood Serving Urban Plaza.

SHRA: Sacramento Housing and Redevelopment Agency.

Skateboard Park: An area specifically designed for skateboard use. Concrete surfaced areas that may contain ramps, bowls, and other structures specifically designed for skateboard play. Size of skateboard park and complexity of the design is influenced by the size of the park. Service Level Goal of 1/30,000 Sacramento residents.

Sustainability: Meeting the needs of the present without compromising the ability of future generations to meet their own needs.

Tot Lot Areas: See **Playgrounds**.

Undeveloped Parkland: Parkland intended for future development as a park, or which may be maintained in a relatively undeveloped/natural state.

Urban Forest: Includes the number of trees, tree species, tree size, tree health, and maintenance requirements of the City's 1.6 million trees, some of which are the largest and oldest in the region. Includes both private and public-owned trees. City Urban Forest Services (Department of Transportation) have direct responsibility for public street and park trees.

Wading Pool: Best located in same facility with adult pools, so they share utilities and staff. Has standing water. Service Level Goal of 1/20,000 Sacramento residents.

Walking/Jogging Trail: A perimeter trail, typically of DG or DG and concrete; designed for walking/jogging exercise.

Water Play/Spray Feature: Pools with little or no standing water. Areas are designed to accommodate intermittent spray of water for interactive play purposes.

Status of Opportunity and Priority Projects from the *2006 Parks & Recreation Programming Guide*

Below details the status of the projects identified in the approved *2006 Parks and Recreation Programming Guide (PRPG)* and is organized first by Council District and then by Community Planning Area within each District.

PROJECT TYPES

- **OPPORTUNITY PROJECT:** Any project not ranked high enough to be a priority project; if a funding source is not found, the project will remain in the PRPG until a funding source is identified.
- **PRIORITY PROJECT:** All priority projects are listed from the *2006 PRPG*; if a funding source is not found, the project will remain in the PRPG until a funding source is identified.

FUNDING STATUS

- **PARTIALLY FUNDED:** A portion of the identified PRPG project has been funded. Unfunded project elements will be re-scoped, reevaluated, and re-scored for the *2008 PRPG*.
- **FULLY FUNDED:** The project has been fully funded and will not be incorporated into the *2008 PRPG*.

Council District: 1

Planning Area: 9

Priority Project

Ninos Park Improvements

Type: Development

Renovate the ball field. Add restroom, field lights, security lighting and more picnic areas.

Funding Status: Partially Funded

Unfunded: ball field renovation, addition of restroom, field lights, and more picnic areas.

Priority Project

Ninos Park Rehabilitation

Type: Repair and Rehabilitation

Resurface and/or re-stripe existing basketball court(s), replace existing drinking fountain, replace benches and picnic area.

Funding Status: Partially Funded

Unfunded: replace benches and picnic area

Priority Project

Northgate Park Rehabilitation

Type: Repair and Rehabilitation

Renovate tennis and basketball courts, existing signage, restrooms, and sand diggers.

Funding Status: Fully Funded

2008 PRPG

Council District: 1 *continued***Planning Area: 9** *continued***Gardenland Park Basketball Court Rehabilitation**

Type: Repair and Rehabilitation

Resurface and/or re-stripe existing basketball court(s).

Funding Status: Fully Funded

Oakbrook Park Site Development

Type: Development

Develop this 4.8-acre park site to include a tot lot and other amenities.

Funding Status: Fully Funded (on hold due to operations and maintenance budgetary issues)

South Natomas Community Center Enhancements

Type: Community Facility

Complete the food/concession area as part of Phase I of the community center. Add bike racks.

Funding Status: Fully Funded (DGS funded concession area, DPR funded racks)

Planning Area: 10***Priority Project*****Bike/Pedestrian Bridge @ River Plaza Drive
at the Natomas Main Drain**

Type: Development

Develop a bike/pedestrian bridge at River Plaza in South Natomas across the Main Drain channel.

Funding Status: Not Funded; DOT Project

Priority Project**Burberry Community Park Phase II**

Type: Development

Develop Phase II park elements such as: tennis courts, restrooms, and landscaping.

Funding Status: Fully Funded

Priority Project**North Natomas Regional Park**

Type: Development

Develop this park in conjunction with community partners consistent with the approved master plan.

Funding Status: Partially Funded

Unfunded: development of open space (Great Meadow), sports field, naturalistic area (with boardwalk), outdoor concert area, cultural garden, conservatory, botanic garden/pond, Park Center, Gardens Conference Center, skateboard park, kids' park, aquatic center, infrastructure and interior park roads, parking lots, multi-use trails surrounding the park, and park maintenance building.

Council District: 1 *continued***Planning Area: 10** *continued***Priority Project****Westlake Park Phase II**

Type: Development

Develop additional features including a playground, picnic shelter, water spray feature, restrooms, and bocce ball courts.

Funding Status: Partially Funded

*Unfunded: water spray feature, bocce ball courts.***Alder Park**

Type: Development

Develop park elements.

Funding Status: Fully Funded

California Lilac Park

Type: Development

Develop park elements.

Funding Status: Fully Funded

Cottonwood Park

Type: Development

Develop park elements.

Funding Status: Fully Funded

Elderberry Park Phase II

Type: Development

Develop Phase II park elements

Funding Status: Fully Funded

Harrier Park

Type: Development

Develop park elements.

Funding Status: Fully Funded

Hummingbird Park Phase II

Type: Development

Add a shade structure and landscaping.

Funding Status: Fully Funded; incorporated into first phase
2008 PRPG

Council District: 1 *continued***Planning Area: 10** *continued***North Natomas Park Nature Area Phase II**

Develop walkways.

Type: Development

Funding Status: Fully Funded; Utilities project

Peregrine Park Phase II

Add a shade structure.

Type: Development

Funding Status: Fully Funded

Quail Park

Develop park elements.

Type: Development

Funding Status: Fully Funded

Redtail Hawk Park

Add an additional play structure.

Type: Development

Funding Status: Fully Funded

Sparrow Park Land Acquisitions

Acquire full land area for park development.

Type: Land Acquisition

Funding Status: Fully Funded

Sundance Park Phase II

Develop Phase II park elements.

Type: Development

Funding Status: Fully Funded

Swainson's Hawk Park

Develop park elements.

Type: Development

Funding Status: Fully Funded (turnkey)

Council District: 1 *continued***Planning Area: 10** *continued***Westhampton Park Phase II**

Type: Development

Develop final park elements.

Funding Status: Fully Funded

Council District: 2**Planning Area: 8****Priority Project****Johnston Pool Rehabilitation**

Type: Repair and Rehabilitation

Replace underground plumbing and pool deck. Extend tubular steel fencing around the pool, install screen to hide pool equipment from view. Repaint the existing fencing and replace existing lifeguard stands and pool railings.

Funding Status: Not Funded

Priority Project**Robertson Park Rehabilitation**

Type: Repair and Rehabilitation

Develop a reuse plan for the existing tennis courts through a community process.

Funding Status: Fully Funded

Priority Project**Mims/Hagginwood Community Center Renovation
Phase II**

Type: Repair and Rehabilitation

Renovation of this facility including the multi-purpose room.

Funding Status: Not Funded

Nuevo Park Phase II (formerly Del Paso Nuevo Park)

Type: Development

Develop Phase II of this neighborhood park including playground and picnic area.

Funding Status: Partially Funded

Unfunded: Develop Phase III of this neighborhood park including picnic area.

Council District: 2 *continued***Planning Area: 8** *continued***Robla Community Park Development**

Type: Development

Develop the next phase of this community park including additional picnic areas, lighting to the parking lot, a cover to the children's play area, a skatepark, and a walking/jogging trail.

Funding Status: Partially Funded

Unfunded: Develop a walking/jogging trail and vernal pool; add restroom, better lighting.

Winner's Park Renovation

Type: Repair and Rehabilitation

Repair existing facilities including irrigation system, restroom and park signage and re-master plan the park to make it a neighborhood park.

Funding Status: Fully Funded

Council District: 3**Planning Area: 1****Priority Project****McKinley Park Rehabilitation**

Type: Repair and Rehabilitation

Modify the bleachers, walkways and restrooms necessary to meet safety and ADA requirements. Repair and expand the tennis building for staff and storage south of the existing tennis courts. Replace the existing playground. Renovate the park's irrigation.

Funding Status: Partially Funded

Unfunded: modify restrooms to meet ADA requirements, repair and expand (if possible) the tennis building for staff and storage south of the existing tennis courts, and replace the existing playground. Renovation of irrigation folded into another project request.

Priority Project**R Street Park Plaza "Market Green"**

Type: Land Acquisition

Acquire property in the R Street Corridor.

Funding Status: Partially Funded; two small sites acquired

McKinley Park Rose Garden Arbors

Type: Repair and Rehabilitation

Install 8 block tubular steel arbors to replace the old rusted steel pipe arches. The arbors will be embellished with artistic metal roses to match the Victorian theme of the garden.

Funding Status: Fully Funded

Council District: 3 *continued***Planning Area: 1** *continued***Muir Park - Children's Park Phase II**

Type: Development

Add additional elements consistent with the updated master plan.

Funding Status: Fully Funded

Planning Area: 6**Priority Project****East Portal Park Jogging Trail**

Type: Community Facility

Create and implement a master plan to add a jogging trail around the perimeter of the park.

Funding Status: Partially Funded

*Unfunded: Master Plan implementation.***Priority Project****Glenn Hall Pool Rehabilitation**

Type: Repair and Rehabilitation

Replace underground plumbing, pool deck, lifeguard stands, and pool railings.

Funding Status: Not Funded

Planning Area: 7**Priority Project****Ben Ali Neighborhood Park Acquisition**

Type: Land Acquisition

Acquire land in the Ben Ali community for a neighborhood park.

Funding Status: Not Funded

Priority Project**Ben Ali Neighborhood Tot Lot**

Type: Development

Add a tot lot/playground and park elements to Ben Ali Elementary School.

Funding Status: Not Funded

Priority Project**University Park Rehabilitation**

Type: Repair and Rehabilitation

Renovate existing benches; add a fountain, pathways; and install group picnic/barbeque area.

Funding Status: Fully Funded

Council District: 4**Planning Area: 1****Priority Project****Southside Park Renovation**

Type: Repair and Rehabilitation

Complete renovation of the lake and surrounding fencing, fishing piers, repaint the stage (facing T Street), repair tennis court lighting, resurface the basketball court and repair the shuffle board kit and small clubhouse, replace dead trees. Renovate lakeshore.

Funding Status: Partially Funded

Unfunded: complete renovation of island, repaint the stage (facing T Street), resurface the basketball court and repair the shuffle board kit and small clubhouse, replace dead trees.

Planning Area: 2**Priority Project****Mangan Park Rehabilitation**

Type: Repair and Rehabilitation

Renovate restrooms. Resurface and/or re-stripe existing basketball court(s).

Funding Status: Not Funded

Priority Project**William Land Park Rehabilitation**

Type: Repair and Rehabilitation

Renovate all park restrooms, existing picnic areas, park signage, fencing, amphitheater and archways. Resurface and re-stripe the basketball court.

Funding Status: Not Funded

Planning Area: 3**Priority Project****Reichmuth Park Rehabilitation**

Type: Repair and Rehabilitation

Master plan and develop the Nature Area for more use including a walking trail through a community process. Renovate water spray feature to current health, safety and ADA standards.

Funding Status: Partially Funded

Unfunded: master plan implementation, including renovation of the water spray feature to current health, safety and ADA standards.

Council District: 4 *continued***Planning Area: 11****Priority Project****Argonaut Park Development**

Type: Development

Develop master plan. Consider relocation of basketball courts. Add new picnic area, parking lot, lighting, walkways (baseball field to bleachers), 10 fitness stations, multi-use recreational trail with lighting, & two drinking fountains.

Funding Status: Partially Funded

Unfunded: develop per the master plan by relocating basketball courts and adding a new picnic area, parking lot, lighting, walkways (baseball field to bleachers), 10-station fitness areas, a multi-use recreational trail with lighting, & two drinking fountains.

Council Districts: 4, 7, & 8

Planning Area: 3**Priority Project****Pocket Area Tennis Courts**

Type: Development

Add additional tennis courts/facilities in the Pocket area, consider developing a multiple-tennis court facility at a larger park.

Funding Status: Fully Funded (*Tennis courts added to Miller Park*)

Council District: 5**Planning Area: 2****Priority Project****East Phillips Neighborhood Park**

Type: Land Acquisition

Acquire a small parcel to develop a neighborhood park to include a multi-use field and playground equipment.

Funding Status: Not Funded

Priority Project**Hollywood Park Improvements**

Type: Development

Develop park elements at Hollywood Park Elementary School and Leonardo DaVinci School.

Funding Status: Not Funded; not on City property

Council District: 5 *continued***Planning Area: 2** *continued***Sierra 2 Park Enhancements**

Type: Development

Add a dog park, a dog/people drinking fountain, benches, play stations for dogs, add fencing around the playground, plant additional trees, and add benches and picnic tables on the west side of the park.

Funding Status: Partially Funded

Unfunded: add a dog/people drinking fountain, benches, play stations for dogs, additional trees, and benches and picnic tables on the west side of the park.

Planning Area: 5**Priority Project****Fourth Avenue Park Basketball Court Rehabilitation**

Type: Repair and Rehabilitation

Resurface and/or re-stripe existing basketball court(s).

Funding Status: Not Funded

Priority Project**McClatchy Park Rehabilitation**

Type: Repair and Rehabilitation

Renovate the existing restrooms, irrigation system, tennis courts and basketball courts. Remove old wading pool. Prepare an assessment of the trees within the park.

Funding Status: Partially Funded

Unfunded: renovate irrigation system, tennis/basketball courts; prepare tree assessment.

McClatchy Pool Rehabilitation

Type: Repair and Rehabilitation

Remove the old wading pool from the pool site, replace turf in the pool area, lifeguard stands and pool railings.

Funding Status: Partially Funded

Unfunded: replace turf in the pool area, lifeguard stands, and pool railings.

Oak Park Improvements

Type: Development

Add new play areas, soccer fields and basketball courts.

Funding Status: Partially Funded

Unfunded: improve park with additional play areas and soccer fields..

Council District: 5 *continued***Planning Area: 11****Priority Project****Woodbine Park Rehabilitation**

Type: Repair and Rehabilitation

Renovate irrigation system, the park barbeque area and the existing park restrooms to current health, safety and ADA requirements.

Funding Status: Partially Funded

Unfunded: renovate irrigation system and the existing park restrooms to current health, safety and ADA requirements.

Council District: 6**Planning Area: 4****Priority Project****Sim Pool Rehabilitation**

Type: Repair and Rehabilitation

Replace underground plumbing, pool deck, lifeguard stands, and pool railings. Remove old wading pool.

Funding Status: Not Funded

Priority Project**Sim Community Center Expansion**

Type: Community Facility

Expand the community center through a community design process to include classrooms, additional office space, childcare, healthcare facilities and gymnasium.

Funding Status: Fully Funded; DGS project

Max Baer Park Enhancements

Type: Development

Add additional tables, barbeque, and an additional basketball court. Add a new mini skatepark, plus additional lighting and signage at this neighborhood park.

Funding Status: Partially Funded

Unfunded: develop additional lighting and signage.

Council District: 6 *continued***Planning Area: 4****Priority Project****Manor Recreation and Swim Club**

Type: Land Acquisition

Acquire and renovate the Manor Recreation and Swimming Club property by collaborating with the Sacramento Housing and Redevelopment Agency.

Funding Status: Not Funded

Planning Area: 5**Priority Project****Earl Warren Park Rehabilitation**

Type: Repair and Rehabilitation

Renovation/Re-use of the sand volleyball courts (consider neighborhood skatepark), repair the existing picnic area, irrigation system and turf, renovate the existing restrooms.

Funding Status: Fully Funded

Planning Area: 6**Priority Project****Oki Park Open Space Development**

Type: Development

Master plan this site and consider in the plan development of parking, tennis courts, multi-purpose trail, horseshoe pits, picnic area, tot lots and bocce courts.

Funding Status: Partially Funded; implementation of plan needed

Oki Park Improvements

Type: Development

Add an additional playground, bocce courts, information kiosk or board, walking path, drinking fountain, and shuffle board courts. Consider new play areas, soccer fields and basketball courts.

Funding Status: Fully Funded

Council District: 7**Planning Area: 3****Priority Project****Lewis Park Improvements**

Type: Development

Add a picnic/barbeque area, a water spray feature and more trees.

Funding Status: Partially Funded

Unfunded: water spray feature and more trees.

Council District: 8**Planning Area: 4****Shasta Park Master Plan**

Type: Development

Develop a master plan for this 19.6-acre community park site.

Funding Status: Fully Funded (Phase 1 development in process, Phase 2 on hold due to operations and maintenance budgetary issues)

Shasta Park Site Acquisition Completion

Type: Land Acquisition

Complete the acquisition of this community park site by purchasing the remaining parcels.

Funding Status: Fully Funded

Planning Area: 11***Priority Project*****Steve Jones Park Phase II**

Type: Development

Continue development of this park consistent with the approved master plan. Development of 4.5 acres to include: landscaping, detention basin and soccer field.

Funding Status: Fully Funded

Brookfield Triangle Landscaping

Type: Community Facility

Add landscaping to the "Brookfield Triangle" as Mack Rd. turns in to Meadowview to create a "neighborhood" gateway to the Meadowview Neighborhood.

Funding Status: Fully Funded

Hopkins Park Rehabilitation

Type: Repair and Rehabilitation

Remove old wading pool.

Funding Status: Fully Funded

CITYWIDE / REGIONAL***Priority Project*****Delta Shores Regional Park Acquisition**

Type: Land Acquisition

Acquire approximately 140-acres for the Regional Park to develop regional park amenities through a community master plan process.

Funding Status: Not Funded

Matsui Waterfront Park Phase II (formerly Jibboom Street Park)

Type: Development

Develop Phase II of the Sacramento Riverfront Park.

Funding Status: Fully Funded

Granite Regional Park Enhancements

Type: Development

Develop a restroom in Phase I and/or Phase II area to improve usability. Add sports field lighting and a children's playground. Develop special elements to improve usage such as lights and a shade structure at the dog park. Develop a covered picnic area.

Funding Status: Partially Funded

Unfunded: develop a restroom in Phase I and/or Phase II area to improve usability; add a children's playground and bike racks to the entrance of the skatepark.

Natomas Baseball Regional Complex

Type: Development

Develop this property into a youth sports complex to include baseball, soccer, picnic areas, concession area, restrooms, and other amenities.

Funding Status: Partially Funded

Unfunded: working with nonprofit organization to have them develop the site.

Park Signage Replacement Program

Type: Repair and Rehabilitation

Replace old/outdated signage with new standard concrete monument signs (i.e., Bannon Creek Parkway, Natomas Oaks, Sand Cove).

Funding Status: Partially Funded; will incorporate updating all signage when other development occurs at each park site.

CITYWIDE / REGIONAL <i>continued</i>

William Land Regional Park Enhancements

Type: Development

Add additional picnic tables, trash cans and barbeques. Add a dog park at Land Park. Investigate and analyze converting interior roads to pedestrian and bicycle trails. Add an additional phase of the jogging trail at the panhandle.

Funding Status: Partially Funded

Unfunded: add a dog park, investigate and analyze converting interior roads to pedestrian and bicycle trails.

North Natomas Regional Park

Type: Development

Develop this park in conjunction with community partners consistent with the approved master plan.

Funding Status: Partially Funded

Unfunded: bicycle trails, boathouse cafe, Great Meadow, cultural garden, conservatory, botanic garden pond, park administration center, aquatics center, garden center, skate park, family center, and sports fields.

RESOLUTION NO. 2008-093

Adopted by the Sacramento City Council

February 19, 2008

**APPROVING THE TIMELINE AND SCORING CRITERIA FOR PREPARATION
OF 2008 PARKS AND RECREATION PROGRAMMING GUIDE (PRPG)**

BACKGROUND

- A. The City of Sacramento's PRPG is designed to identify, evaluate, and prioritize unfunded or under-funded park and recreation capital projects citywide.
- B. PRPG projects are scored and prioritized per the City Council approved PRPG process.
- C. The adopted *2005-2010 Parks and Recreation Master Plan* sets service level goals for both park and recreation acreage and facility needs within the City of Sacramento. The service level goals, population projections from the City's Development Services Department and the City's updated park and recreation facility inventory will be used to develop updated deficiency calculations for the 2008 PRPG.

**BASED ON THE FACTS SET FORTH IN THE BACKGROUND, THE CITY
COUNCIL RESOLVES AS FOLLOWS:**

- Section 1. The timeline and scoring criteria for the preparation 2008 Parks and Recreation Programming Guide, attached as Exhibits A and B, are approved.

Table of Contents:

Exhibit A –2008 PRPG Update Timeline
Exhibits B¹⁻⁷ – 2008 PRPG Scoring Criteria

Adopted by the City of Sacramento City Council on February 19, 2008 by the following vote:

Ayes: Councilmembers Cohn, Fong, Hammond, McCarty, Pannell, Sheedy, Tretheway, Waters, and Mayor Fargo.

Noes: None.

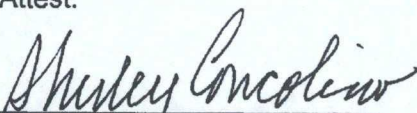
Abstain: None.

Absent: None.



Mayor Heather Fargo

Attest:



Shirley Concolino, City Clerk

Exhibit A

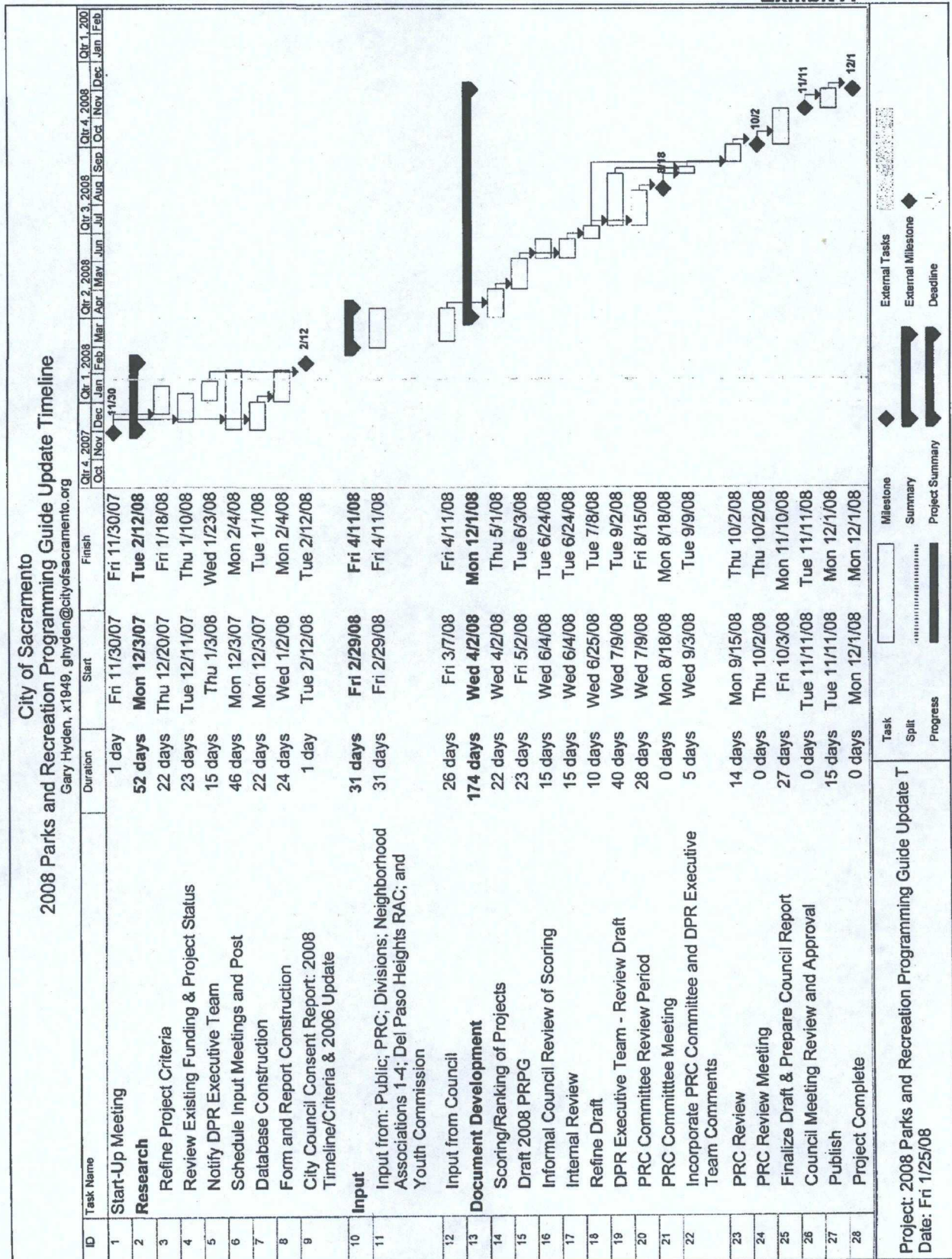


Exhibit B¹**2008 PARKS AND RECREATION PROGRAMMING GUIDE****PROPOSED SCORING CRITERIA
NEIGHBORHOOD/COMMUNITY LAND ACQUISITION****PROJECT NAME:****Planning Area:****Council District:****PARK ACREAGE NEED:**

4 points -- High need for parkland

2 points -- Need for parkland

0 points -- No need for parkland

☐**SITE SIGNIFICANCE:**

4 points -- Includes cultural and/or natural resource element and is in an at-risk neighborhood

2 points -- Includes cultural and/or natural resource element or is in an at-risk neighborhood

0 points -- Neither

☐**SUITABILITY FOR ACTIVE/PASSIVE RECREATIONAL USE:**

3 points -- High suitability

2 points -- Moderate suitability

1 point -- Low suitability

0 points -- Not suitable

☐**LAND AVAILABILITY:**

2 points -- Available for purchase (unencumbered) and land needs to be purchased immediately or the opportunity will be lost

1 point -- Unavailable for purchase

☐**COST OFFSETS AND PARTNERSHIPS:**

2 points -- Outside funding available (i.e., grants, volunteer support, etc.)

0 points -- No outside funding available

☐**TOTAL POINTS OUT OF 15:**☐

Exhibit B²**2008 PARKS AND RECREATION PROGRAMMING GUIDE****PROPOSED SCORING CRITERIA
DEVELOPMENT OF NEW OR
EXISTING PARKS OR RECREATIONAL FACILITIES****PROJECT NAME:****Planning Area:**
Council District:**PARK ACREAGE NEED:**

- 4 points -- High need for parkland
2 points -- Need for parkland
0 points -- No need for parkland

☐**RECREATIONAL FACILITIES NEED:**

- 4 points -- High need
2 points -- Moderate need
0 points -- No need

☐**PUBLIC PRIORITY AND SITE SIGNIFICANCE:**

- 3 points -- Neighborhood and/or business support and a cultural and/or natural resource element
2 points -- Completed Community or Park Master Plan
1 point -- Neighborhood and/or business support
0 points -- No known public support

☐**COST OFFSETS AND PARTNERSHIPS:**

- 2 points -- Outside funding available (i.e., grants, volunteer support, etc.)
0 points -- No outside funding available

☐**AT-RISK OR ECONOMICALLY DISADVANTAGED AREA:**

- 2 points -- Yes
0 points -- No

☐**TOTAL POINTS OUT OF 15:**☐

Exhibit B³**2008 PARKS AND RECREATION PROGRAMMING GUIDE****PROPOSED SCORING CRITERIA
REPAIR AND REHABILITATION**

PROJECT NAME:

Planning Area:
Council District:**HEALTH AND SAFETY:**

- 3 points -- Serious health/safety concern
2 points -- Health/Safety concern
0 points -- No health/safety concern

☐**SITE SIGNIFICANCE:**

- 4 points -- Includes a cultural and/or natural resource element and is in an at-risk neighborhood
2 points -- Includes a cultural and/or natural resource element or is in an at-risk neighborhood
0 points -- Neither

☐**PUBLIC USE:**

- 3 points -- High use
2 points -- Moderate use
1 point -- Low use
0 points -- No use

☐**LEGAL MANDATES:**

- 2 points -- Legal mandate, i.e. code violation, legislative mandate, etc.
0 points -- Not applicable

☐**COST OFFSETS AND PARTNERSHIPS:**

- 2 points -- Outside funding available (i.e., grants, volunteer support, etc.)
0 points -- No outside funding available

☐**FACILITY NEEDS (BY PLANNING AREA):**

- 2 points -- Addresses facility needs
0 points -- Does not address facility needs

☐

TOTAL POINTS OUT OF 15:

☐

Exhibit B⁴**2008 PARKS AND RECREATION PROGRAMMING GUIDE****PROPOSED SCORING CRITERIA
COMMUNITY FACILITY****PROJECT NAME:****Planning Area:**
Council District:**FACILITY NEED:**

- 4 points -- High need
2 points -- Basic need
0 points -- No need for this type of facility

☐**COMMUNITY BENEFIT:**

- 3 points -- New recreational, cultural, or educational opportunities
2 points -- Enhanced recreational, cultural, or educational opportunities
1 point -- Limited recreational, cultural, or educational opportunities

☐**PUBLIC PRIORITY:**

- 3 points -- Neighborhood and/or business support, projected to be a high use facility, and complete master plan
2 points -- Projected to be a high use facility or complete master plan
1 point -- Neighborhood and/or business support
0 points -- No known public support

☐**COST OFFSETS AND PARTNERSHIPS:**

- 3 points -- Outside funding available (i.e., grants, volunteer support, etc.)
0 points -- No outside funding available

☐**AT-RISK OR ECONOMICALLY DISADVANTAGED AREA:**

- 2 points -- Yes
0 points -- No

☐**TOTAL POINTS OUT OF 15:**☐

Resolution 2008-093

February 19, 2008

7

Exhibit B⁵**2008 PARKS AND RECREATION PROGRAMMING GUIDE****PROPOSED SCORING CRITERIA
REGIONAL LAND ACQUISITION****PROJECT NAME:****Planning Area:****Council District:****PARK ACREAGE NEED:**

- 4 points -- High need for parkland
- 2 points -- Need for parkland
- 0 points -- No need for parkland

SITE SIGNIFICANCE:

- 4 points -- Includes historical, cultural, or natural resource element and is easily accessible
- 2 points -- Includes historical, cultural, or natural resource element or is easily accessible
- 0 points -- Neither

SUITABILITY FOR ACTIVE/PASSIVE RECREATIONAL USE:

- 3 points -- High suitability
- 2 points -- Moderate suitability
- 1 point -- Low suitability
- 0 points -- Not suitable

LAND AVAILABILITY:

- 2 points -- Available for purchase (unencumbered) and land needs to be purchased immediately or the opportunity will be lost
- 1 point -- Unavailable for purchase

COST OFFSETS AND PARTNERSHIPS:

- 2 points -- Outside funding available (i.e., grants, volunteer support, etc.)
- 0 points -- No outside funding available

TOTAL POINTS OUT OF 15:

Exhibit B⁶**2008 PARKS AND RECREATION PROGRAMMING GUIDE****PROPOSED SCORING CRITERIA
DEVELOPMENT OF NEW OR EXISTING
REGIONAL PARKS/RECREATIONAL FACILITIES**

PROJECT NAME:

Planning Area:
Council District:**REGIONAL NEED:**

- 4 points -- High need for regional parkland or facility
- 2 points -- Need for regional parkland or facility
- 1 point -- No need for regional parkland or facility

☐**REGIONAL SIGNIFICANCE:**

- 4 points -- Unique to the region and is a destination attraction
- 3 points -- Unique to the region or is a destination attraction
- 2 points -- Reduces need for neighborhood/community parkland or community facility
- 1 point -- No regional significance

☐**ECONOMIC REVITALIZATION:**

- 3 points -- Located in an economically disadvantaged area and has an identified economic benefit
- 2 points -- Located in an economically disadvantaged area or has an identified economic benefit
- 0 points -- Not applicable

☐**COST OFFSETS AND PARTNERSHIPS:**

- 2 points -- Outside funding available (i.e., grants, volunteer support, etc.)
- 1 points -- No outside funding available

☐**LOCAL NEIGHBORHOOD/BUSINESS SUPPORT:**

- 2 points -- Local neighborhood/business support
- 0 points -- No support known

☐

TOTAL POINTS OUT OF 15:

☐

Exhibit B⁷**2008 PARKS AND RECREATION PROGRAMMING GUIDE****PROPOSED SCORING CRITERIA
REGIONAL REPAIR AND REHABILITATION**

PROJECT NAME:

Planning Area: REG.

Council District: REG.

HEALTH AND SAFETY:

3 points -- Serious health/safety concern

2 points -- Health/Safety concern

0 points -- No health/safety concern

☐**SITE SIGNIFICANCE:**

3 points -- Includes a cultural and/or natural resource element and is a regional destination attraction

2 points -- Includes a cultural and/or natural resource element or is in an at-risk neighborhood or is a regional destination attraction

0 points -- None

☐**PUBLIC USE:**

3 points -- High use

2 points -- Moderate use

1 point -- Low use

0 points -- No use

☐**LEGAL MANDATES:**

2 points -- Legal mandate, i.e. code violation, legislative mandate, etc.

0 points -- Not applicable

☐**COST OFFSETS AND PARTNERSHIPS:**

2 points -- Outside funding available (i.e., grants, volunteer support, etc.)

0 points -- No outside funding available

☐**FACILITY NEEDS (BY PLANNING AREA):**

2 points -- Addresses facility needs

0 points -- Does not address facility needs

☐

TOTAL POINTS OUT OF 15:

☐