



10

APPROVED  
BY THE CITY COUNCIL

DEC 16 1986

OFFICE OF THE  
CITY CLERK

DEPARTMENT OF PARKS  
AND COMMUNITY SERVICES

CITY OF SACRAMENTO  
CALIFORNIA

1231 I STREET  
SUITE 400  
SACRAMENTO, CA  
95814-2977

ROBERT P. THOMAS  
DIRECTOR

December 9, 1986

916-449-5200

G. ERLING LINGGI  
ASSISTANT DIRECTOR

CITY MANAGER'S OFFICE  
**RECEIVED**  
DEC 11 1986

DIVISIONS:

CROCKER ART MUSEUM  
GOLF  
METROPOLITAN ARTS  
MUSEUM & HISTORY  
PARKS  
RECREATION  
ZOO

City Council  
Sacramento, California

Honorable Members in Session:

SUBJECT: Park Site Contribution for American River Access by Sacramento  
Regional Foundation

SUMMARY

This report provides information relating to a proposed contribution of property located at Howe Avenue and the American River from the Sacramento Regional Foundation and recommends acceptance of this contribution.

BACKGROUND INFORMATION

The 1.4 acre portion of the property, described in Exhibit A, is proposed for contribution to the City of Sacramento for use as a park site and river access. Not only will this contribution provide safe access to the river, but it will also effectively connect the two-acre University Park site, located north of University Avenue, to the American River Parkway and Jedediah Smith National Recreation Trail. University Park is scheduled for completion in summer 1987.

The City standard for park acreage is five acres per 1,000 population. Besides the American River Parkway, this neighborhood is served by just one City park site, University Park, and one County park for an estimated total of .06 acres per 1,000 persons. Further, this area is geographically limited by the American River on the west and south, Fair Oaks Boulevard on the north, and Watt Avenue on the east. The proposed parcel will be a valuable addition to this park space now available in this neighborhood.

It is necessary to accept this property before December 19, 1987 in order to eliminate the necessity of a formal parcel split and attendant costs. Total appraised value of the property is \$37,500. Conditions of the deed include preservation of the property as a park or open space providing access to the American River Parkway, and when the property is developed as a park, the Foundation reserves the right to suggest a name for the park.

City Council  
December 9, 1986  
Page Two

FINANCIAL DATA

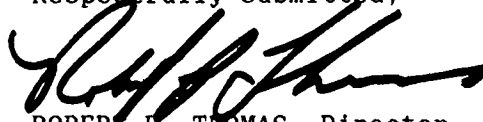
There are no costs to the City for acceptance of this undeveloped site. Development costs for passive use are generally \$12,000 per acre. Park development costs will be included in the future CIP program.

Annual maintenance costs of the developed site are estimated at \$6,180 and will be included in the Parks Division Operating Budget.

RECOMMENDATION

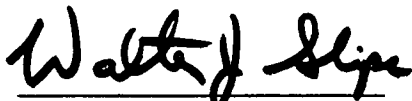
It is recommended that the City Council, by resolution, accept the contribution to the City of a 1.4 acre park site donated by the Sacramento Regional Foundation with the conditions set forth in the resolution.

Respectfully submitted,



ROBERT P. THOMAS, Director  
Parks and Community Services

Recommendation Approved:



WALTER J. SLIPE  
City Manager

RPT:ja

December 16, 1986  
District No. 3

86-936

10

## RESOLUTION NO.

ADOPTED BY THE SACRAMENTO CITY COUNCIL ON DATE OF

RESOLUTION ACCEPTING THE CONTRIBUTION OF A CERTAIN  
PARCEL BY THE SACRAMENTO REGIONAL FOUNDATION  
TO THE CITY OF SACRAMENTO

**APPROVED**  
BY THE CITY COUNCIL

DEC 16 1986

OFFICE OF THE  
CITY CLERK

BE IT RESOLVED BY THE COUNCIL OF THE CITY OF SACRAMENTO:

1. That the contribution of a 1.4 acre parcel, #295-0040-022, donated by the Sacramento Regional Foundation to create a park site and access to the American River is hereby accepted with the following conditions:
  - a. As long as the City holds title to the property, it will be preserved as a park or open space to provide access to the American River Parkway.
  - b. If and/or when the property is developed as a park, the Foundation reserves the right to suggest a name for the park.

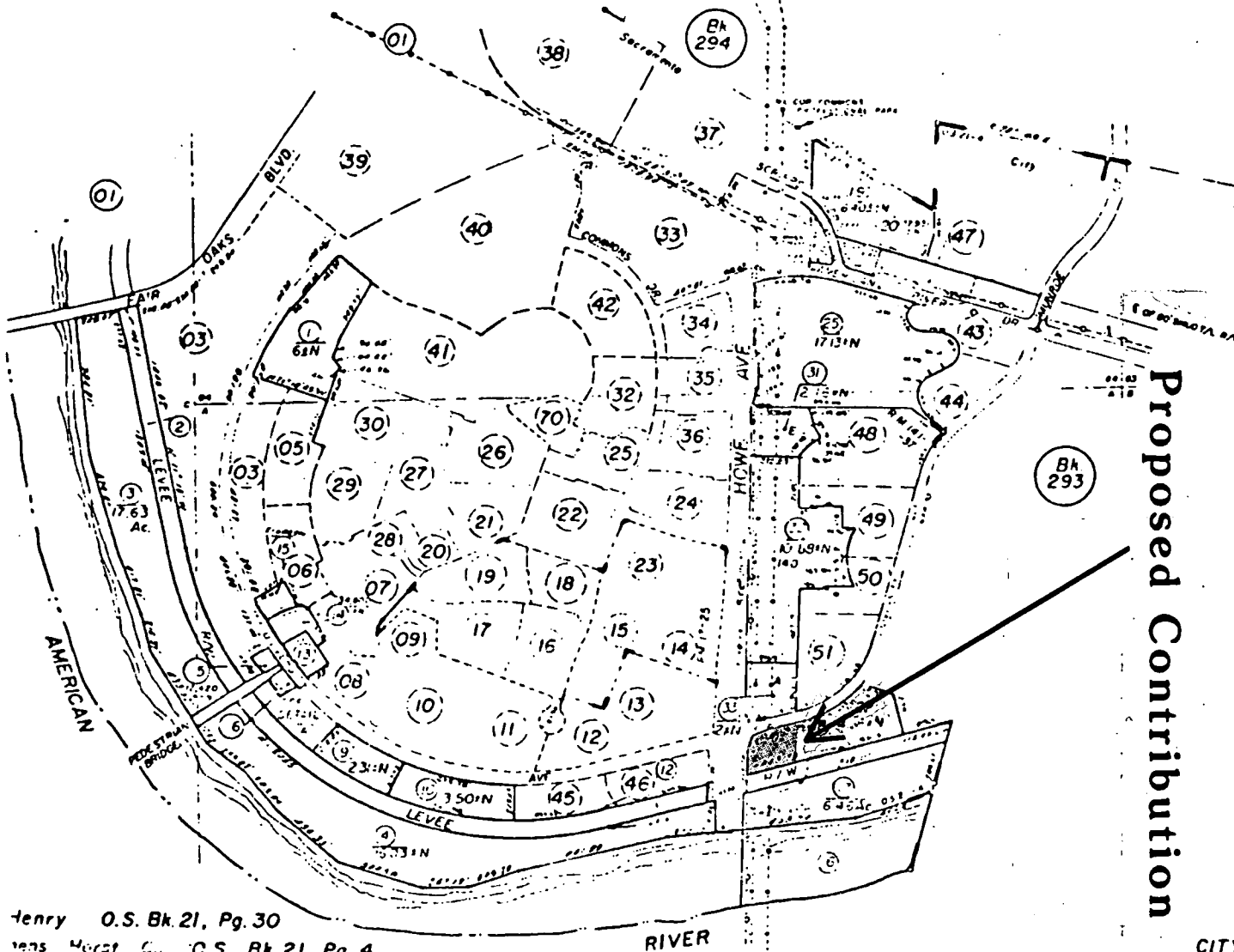
\_\_\_\_\_  
MAYOR

ATTEST:

\_\_\_\_\_  
CITY CLERK

POR. SEC'S. 63, 64, A & B RANCHO DEL PASO

295-04  
3394



Proposed Contribution

BA 293

BA 294

Henry O.S. Bk. 21, Pg. 30  
 Mans Harst Co. O.S. Bk. 21, Pg. 4  
 Bottom Land Property O.S. Bk. 4, Pg. 48  
 64, O.S. Bk. 21, Pg. 3  
 University Park R.M. Bk. 141, Pg. 37 (19-18-00)

RIVER  
 6'100' P.O. 01 1/2' 1/2' 1/2'  
 6'100' P.O. 01 1/2' 1/2' 1/2'

CITY OF SACRAMENTO  
 Assessor's Map Bk. 295 Pg. 04  
 County of Sacramento, Calif.

David E. Lane, Inc.  
 Real Estate Appraisers