

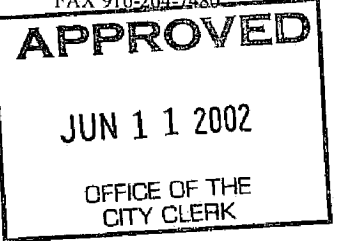
3.4

DEPARTMENT OF
PUBLIC WORKS

DEVELOPMENT SERVICES

CITY OF SACRAMENTO
CALIFORNIA

Special Districts
1231 I Street, Room 300
SACRAMENTO, CA
95814
PH 916-264-7995
FAX 916-264-7480



May 28, 2002

City Council
Sacramento, California

Honorable Members in Session:

**SUBJECT: VILLAGE GARDEN MAINTENANCE DISTRICT - PUBLIC HEARING ON
FY 2002/03 ANNUAL REPORT**

LOCATION AND COUNCIL DISTRICT:

The property is located in Council District #2 and includes Village Garden North Subdivision, Units 1 through 5. Village Garden North is located north of Main Avenue and west of Sully Street (see attached Exhibit A).

RECOMMENDATION:

This report recommends that the City Council adopt:

- Resolution Overruling Protests for the Village Garden Maintenance District for FY 2002/03.
- Resolution Confirming Diagram and Assessment, and Levying FY 2002/03 Annual Assessment for the Village Garden Maintenance District.
- Resolution Amending the FY 2002/03 Budget for Village Garden Maintenance District.

CONTACT PERSON: Rita Goolkasian, Special Districts Analyst, 264-5236

FOR COUNCIL MEETING OF: June 11, 2002

Department of
PUBLICWORKS
CITY OF
SACRAMENTO

City Council
Village Garden Maintenance District
May 28, 2002

SUMMARY:

The recommended Council action will levy the FY2002/03 annual assessment for the Village Garden Maintenance District. The district was established in 1987 to recover the annual costs of maintenance for landscaped areas within the subdivision. There will be no increase in this year's annual assessment.

COMMITTEE/COMMISSION ACTION:

None.

BACKGROUND INFORMATION:

On December 8, 1987, the City Council adopted Resolution #87-1012 ordering the formation of the Village Garden Maintenance District, formerly known as the Village Garden North Landscaping and Lighting Assessment District. The district provides funding to maintain landscaping, which was installed as a condition of the subdivision development. The district includes 208 residential lots.

Each year the City must adopt a new Engineer's Report and re-levy the assessments. This report presents the recommended Village Garden Maintenance District budget for FY 2002/03 and the necessary assessments to perform the landscape maintenance.

On May 21, 2002, City Council adopted a Resolution of Intention that set a hearing date for the Annual Report. As of this date, no protests have been received.

FINANCIAL CONSIDERATIONS:

The total cost for property owners in FY2002/03 is projected at \$12,480. Maintenance costs will be assessed to the 208 residential lots within the district. Although, the maximum authorized annual assessment is \$100 per unit or \$20,800 total per year, the fiscal year 2002/03 annual maintenance cost for a single-family residential lot is projected at \$60 per unit.

The FY 2002/03 budget is determined to be \$30,608 including a \$15,000 contingency. A projected surplus offset of \$18,128 will require an assessment of \$12,480.

The costs are detailed in the Engineer's Report on file with the City Clerk. This maintenance district is self-supporting and has no impact on the general fund.

City Council
Village Garden Maintenance District
May 28, 2002

ENVIRONMENTAL CONSIDERATION:

Under CEQA guidelines, administration and annual maintenance do not constitute a project and are therefore exempt from review.


POLICY CONSIDERATIONS:

These annual proceedings are being conducted in accordance with the Landscaping and Lighting Act of 1972, as set forth in Section 22500 of the Streets and Highways Code.

ESBD CONSIDERATIONS:

Not applicable. No goods or services are being purchased.

Respectfully submitted,


for Gary Alm, Manager
Development Services

Recommendation Approved:


ROBERT P. THOMAS
City Manager

Approved:

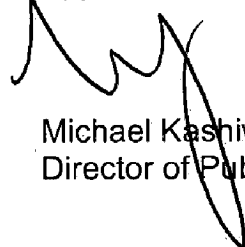

Michael Kashiwagi
Director of Public Works

EXHIBIT B

VILLAGE GARDEN MAINTENANCE DISTRICT

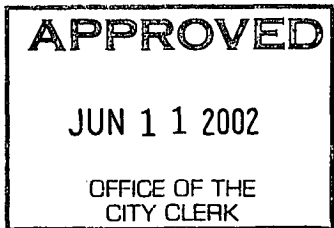
FY2002/03 SCHEDULE

May 21, 2002 Council Adopted Resolution of Intention and Set Date for Hearing

May 28, 2002 Publish Notice of Hearing

June 11, 2002 Hearing - Council Considers All Protests, Orders Annual Levy

July 2002 Assessments to County for Placement on Tax Roll



RESOLUTION NO. 2002-370

ADOPTED BY THE SACRAMENTO CITY COUNCIL

ON DATE OF _____

**RESOLUTION OVERRULING PROTESTS FOR THE
VILLAGE GARDEN MAINTENANCE DISTRICT
FOR FY 2002/2003**

BE IT RESOLVED BY THE COUNCIL OF THE CITY OF SACRAMENTO:

On June 11, 2002, the City Council opened a public hearing on the Resolution of Intention and the Engineer's Annual Report for Village Garden Maintenance District, City of Sacramento, County of Sacramento, State of California.

At or before the time set for the hearing, certain interested persons made protests or objections to the proposed maintenance, the extent of the assessment district, or the proposed maintenance.

The City Council hereby overrules each of these protests, written or oral.

The City Council finds that the protest against the proposed maintenance (including all written protests not withdrawn in writing before the conclusion of the protest hearing) is made by the owners of less than one-half of the area of the land to be assessed for the improvement.

MAYOR

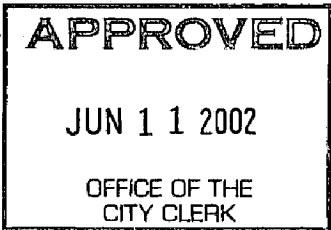
ATTEST:

CITY CLERK

FOR CITY CLERK USE ONLY

RESOLUTION NO.: _____

DATE ADOPTED: _____



RESOLUTION NO. 2002-371

ADOPTED BY THE SACRAMENTO CITY COUNCIL

ON DATE OF _____

**RESOLUTION CONFIRMING DIAGRAM AND
ASSESSMENT AND LEVYING ASSESSMENT FOR
VILLAGE GARDEN MAINTENANCE DISTRICT FOR FY 2002/03**

BE IT RESOLVED BY THE COUNCIL OF THE CITY OF SACRAMENTO:

1. Pursuant to Chapter 3 of the Landscaping and Lighting Act of 1972, the City Council directed the Director of Public Works as the Engineer of Work for the Village Garden Maintenance District to prepare and file an Annual Report for the Fiscal Year 2002/03.
2. The Engineer of Work filed the annual report on May 21, 2002, and the City Council adopted its Resolution of Intention to levy and collect assessments within the assessment district for Fiscal Year 2002/03 and set a public hearing to be held on June 11, 2002, in the meeting place of the City Council, City Hall, 915 I Street, Second Floor, Sacramento, California. Notice of the hearing was given in the time and manner required by law.
3. At the public hearing, the City Council afforded to every interested person an opportunity to make protest to the Annual Report either in writing or orally, and the City Council has considered each protest.
4. The City Council hereby confirms the diagram and assessment as set forth in the Annual Report of the Engineer of Work and hereby levies the assessment set forth therein for Fiscal Year 2002/03.

MAYOR

ATTEST:

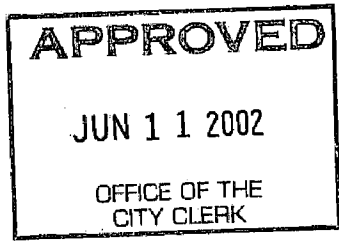
CITY CLERK

FOR CITY CLERK USE ONLY

7

RESOLUTION NO.: _____

DATE ADOPTED: _____



RESOLUTION NO. 2002-372

ADOPTED BY THE SACRAMENTO CITY COUNCIL

ON DATE OF _____

RESOLUTION AMENDING THE FY 2002/03 BUDGET FOR VILLAGE GARDEN MAINTENANCE DISTRICT

BE IT RESOLVED BY THE COUNCIL OF THE CITY OF SACRAMENTO:

- 1. The Fiscal Year 2002/03 Expenditure Budget for the Village Garden Maintenance District is adopted as follows:

PW - Street Maintenance	280-310-3197-4390	\$ 2,500
	280-310-3197-4384	9,400
PW - Special Districts	280-310-3121-4390	2,500
Accounting Administration	280-110-1131-4390	1,208
Contingency	280-710-7012-4999	<u>15,000</u>
Total Expenditures		\$ 30,608

- 2. The Fiscal Year 2002/03 Revenue Budget (\$30,608 - \$18,128 surplus) for the Village Garden Maintenance District is adopted as follows:

(See Budget preparation table - Attachment A)

280-310-3121-3657 \$12,480

MAYOR

ATTEST:

CITY CLERK

FOR CITY CLERK USE ONLY

RESOLUTION NO.: _____

DATE ADOPTED: _____

ATTACHMENT A

Budget preparation table:

Village Garden Maintenance District

FUND	ACT	AGY	ORGN	OBJ/REV	CURRENT BUDGET	REVISED BUDGET	INCREASE (DECREASE)	BUDGET REGERENCE
280	C	310	3121	3657	12,480	12,480	0	A
				RB				
				Totals:	12,480	12,480	0	
280	C	110	1131	4390	1,211	1,208	(3)	B
280	C	310	3121	4390	2,500	2,500	0	C
280	C	310	3197	4384	10,750	9,400	(1,350)	D
280	C	310	3197	4390	1,890	2,500	610	
280	C	710	7012	4999	21,129	15,000	(6,129)	E
				EB Totals:	37,480	30,608	(6,872)	

FOR CITY CLERK USE ONLY

RESOLUTION NO.: _____

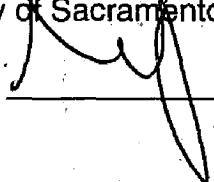
DATE ADOPTED: _____

ENGINEER'S REPORT
FY 2002/03
VILLAGE GARDEN MAINTENANCE DISTRICT
(Pursuant to the Landscaping and Lighting Act of 1972)

The undersigned respectfully submits the enclosed report as directed by the City Council.

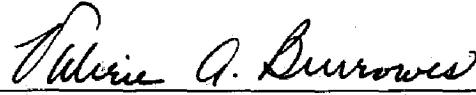
Dated: 5/21/02

Michael Kashiwagi, Director Public Works
City of Sacramento, Engineer of Work

By: 

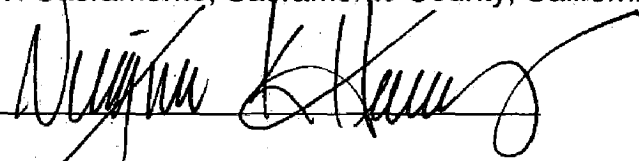
I HEREBY CERTIFY that the enclosed Engineer's Report together with Assessment and Assessment Diagram thereto attached, was filed with me on the ___ day of 5/21, 2002.

Valerie A. Burrowes, City Clerk
City of Sacramento, Sacramento County, California

By: 

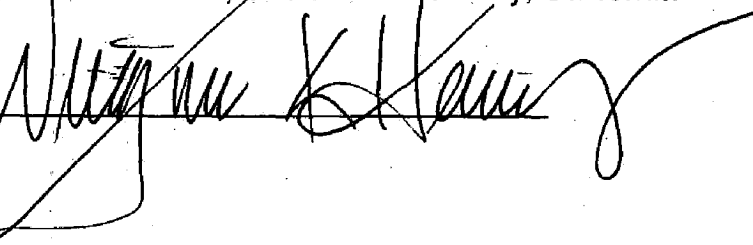
I HEREBY CERTIFY that the enclosed Engineer's Report, together with Assessment and Assessment Diagram thereto attached, was approved and confirmed by the City Council of the City of Sacramento, California, on the 11th day of June, 2002.

for Valerie A. Burrowes, City Clerk
City of Sacramento, Sacramento County, California

By: 

I HEREBY CERTIFY that the enclosed Engineer's Report, together with Assessment and Assessment Diagram thereto attached, was filed with the County Auditor of the County of Sacramento, California, on the 11th day of July, 2002.

for Valerie A. Burrowes, City Clerk
City of Sacramento, Sacramento County, California

By: 

ENGINEER'S REPORT

VILLAGE GARDEN MAINTENANCE DISTRICT

Michael Kashiwagi, Engineer of Work for the Village Garden Maintenance District, City of Sacramento, Sacramento County, California, makes this report as directed by the City Council, pursuant to the Landscaping and Lighting Act of 1972 (Streets and Highways Code Section 22500, and following).

The maintenance, which is the subject of this report, is briefly described as follows:

Furnish all tools, equipment, apparatus, facilities, labor, material, supplies, and utilities necessary or desirable to maintain and service the landscape improvements as shown on Exhibit A, and more particularly described on plans and specifications approved by the City of Sacramento on file at the City of Sacramento, Department of Neighborhood Services, 1231 I Street, Room 400, Sacramento, California 95814.

The improvements generally consist of masonry walls; landscaping and irrigation systems for the landscape areas within or adjacent to the residential subdivisions identified on Exhibit A. Maintenance of said improvements will include, but not be limited to, periodic mowing of grass, trimming of trees and shrubs, and fertilizing, together with the regular furnishing of water for irrigation of all plant material, and the repair, maintenance, and replacement of the irrigation system, planted materials, and amenities. Maintenance of masonry walls includes periodic repair as required.

This report includes the following attached exhibits:

EXHIBIT A – Schematic diagram of each subdivision with landscaping improvements.

EXHIBIT B – An estimate of the cost of maintenance for each subdivision.

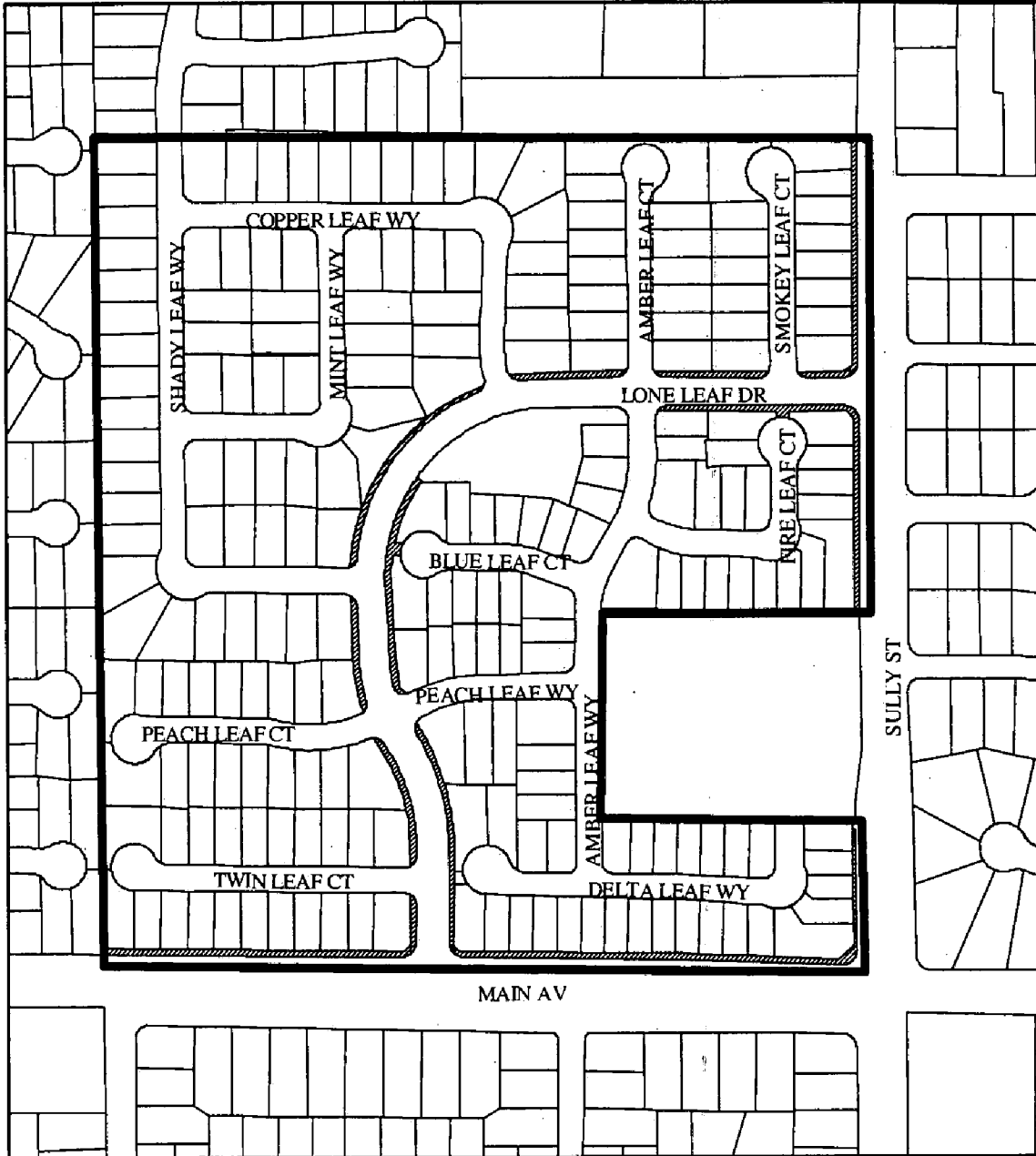
EXHIBIT C – An assessment roll showing the amount to be specifically assessed against each parcel of real property within this district. Each parcel is described by County Assessor's parcel number or other designation, and each parcel is also assigned a separate "assessment number" for the purposes of this report.



EXHIBIT D – A statement of the method by which the undersigned determined the amount of the proposed assessments to be assessed against each parcel, based on benefits to be derived by each parcel, from the maintenance of said improvements.

EXHIBIT E – A diagram showing all of the parcels of real property within this assessment district. The diagram is keyed to Exhibit C by assessment number.

Michael Kashiwagi
Engineer of Work

EXHIBIT A
Village Garden Maintenance District
Maintenance Area



-  Boundary
-  Maintenance Area



St. Johns Special District Map Village Garden Maintenance Area May 2025

**EXHIBIT B
VILLAGE GARDEN MAINTENANCE DISTRICT
COST ESTIMATE FY 2002/03**

<u>DESCRIPTION</u>	<u>ITEMIZED COST</u>
I. Maintenance Tasks	
Contract Maintenance	\$8,000
Unscheduled Maintenance	\$0
Utilities	\$1,400
Total Maintenance Tasks	\$9,400
II. Administration	
Contract (Streets)	\$2,500
Reporting (Special Districts)	\$2,500
Total Administration	\$5,000
III. Contingency	\$15,000
IV. Annual Billing & Administration	\$1,208
Total Budget	\$30,608
V. Fund Balance (Offset)	\$18,128
Total Assessment To Property Owners	\$12,480

EXHIBIT C
VILLAGE GARDEN NORTH LANDSCAPING
AND LIGHTING ASSESSMENT DISTRICT
ASSESSMENT ROLL FY 2002/2003

<u>Asmnt #</u>	<u>Assessor's Parcel No.</u>	<u>Assessment</u>
1	22603210240000	\$60.00
2	22603210280000	\$60.00
3	22603210290000	\$60.00
4	22603210310000	\$60.00
5	22603210320000	\$60.00
6	22603210330000	\$60.00
7	22603210340000	\$60.00
8	22603210350000	\$60.00
9	22603210360000	\$60.00
10	22603210370000	\$60.00
11	22603210390000	\$60.00
12	22603210400000	\$60.00
13	22603210410000	\$60.00
14	22603210420000	\$60.00
15	22603210430000	\$60.00
16	22603210440000	\$60.00
17	22603210450000	\$60.00
18	22603210460000	\$60.00
19	22603210470000	\$60.00
20	22603210480000	\$60.00
21	22603210490000	\$60.00
22	22603210500000	\$60.00
23	22603210510000	\$60.00
24	22603210520000	\$60.00
25	22603210530000	\$60.00
26	22603210550000	\$60.00
27	22603210560000	\$60.00
28	22603210570000	\$60.00
29	22603210580000	\$60.00
30	22603210590000	\$60.00
31	22603210600000	\$60.00
32	22603210610000	\$60.00
33	22603210620000	\$60.00
34	22603210630000	\$60.00
35	22603210640000	\$60.00
36	22603210650000	\$60.00
37	22603210660000	\$60.00
38	22603210670000	\$60.00
39	22603210680000	\$60.00
40	22603210690000	\$60.00
41	22603210770000	\$60.00
42	22603210780000	\$60.00
43	22603210790000	\$60.00
44	22603210800000	\$60.00

EXHIBIT C
VILLAGE GARDEN NORTH LANDSCAPING
AND LIGHTING ASSESSMENT DISTRICT
ASSESSMENT ROLL FY 2002/2003

<u>Asmnt #</u>	<u>Assessor's Parcel No.</u>	<u>Assessment</u>
45	22603210810000	\$60.00
46	22603220010000	\$60.00
47	22603220020000	\$60.00
48	22603220030000	\$60.00
49	22603220040000	\$60.00
50	22603220050000	\$60.00
51	22603220070000	\$60.00
52	22603220080000	\$60.00
53	22603220090000	\$60.00
54	22603220100000	\$60.00
55	22603220110000	\$60.00
56	22603220120000	\$60.00
57	22603220130000	\$60.00
58	22603230020000	\$60.00
59	22603230030000	\$60.00
60	22603230040000	\$60.00
61	22603230050000	\$60.00
62	22603230060000	\$60.00
63	22603230070000	\$60.00
64	22603230080000	\$60.00
65	22603230090000	\$60.00
66	22603230100000	\$60.00
67	22603230110000	\$60.00
68	22603230130000	\$60.00
69	22603230140000	\$60.00
70	22603230150000	\$60.00
71	22603230160000	\$60.00
72	22603230170000	\$60.00
73	22603230180000	\$60.00
74	22603230190000	\$60.00
75	22603230200000	\$60.00
76	22603230210000	\$60.00
77	22603230220000	\$60.00
78	22603230230000	\$60.00
79	22603240120000	\$60.00
80	22603240130000	\$60.00
81	22603240140000	\$60.00
82	22603240150000	\$60.00
83	22603240160000	\$60.00
84	22603240170000	\$60.00
85	22603250010000	\$60.00
86	22603250020000	\$60.00
87	22603250030000	\$60.00
88	22603250040000	\$60.00

EXHIBIT C

VILLAGE GARDEN NORTH LANDSCAPING AND LIGHTING ASSESSMENT DISTRICT FY 2002/2003

<u>Asmnt #</u>	<u>Assessor's Parcel No.</u>	<u>Assessment</u>
89	22603250050000	\$60.00
90	22603250060000	\$60.00
91	22603250070000	\$60.00
92	22603250080000	\$60.00
93	22603250090000	\$60.00
94	22603250100000	\$60.00
95	22603250110000	\$60.00
96	22603250120000	\$60.00
97	22603250130000	\$60.00
98	22603250190000	\$60.00
99	22603250230000	\$60.00
100	22603250240000	\$60.00
101	22603250250000	\$60.00
102	22603250260000	\$60.00
103	22603250270000	\$60.00
104	22603250280000	\$60.00
105	22603250290000	\$60.00
106	22603260010000	\$60.00
107	22603260020000	\$60.00
108	22603260030000	\$60.00
109	22603260040000	\$60.00
110	22603260050000	\$60.00
111	22603260060000	\$60.00
112	22603260070000	\$60.00
113	22603260080000	\$60.00
114	22603260090000	\$60.00
115	22603260100000	\$60.00
116	22603260110000	\$60.00
117	22603260120000	\$60.00
118	22603260130000	\$60.00
119	22603260140000	\$60.00
120	22603260150000	\$60.00
121	22603260160000	\$60.00
122	22603260170000	\$60.00
123	22603300010000	\$60.00
124	22603300020000	\$60.00
125	22603300030000	\$60.00
126	22603300040000	\$60.00
127	22603300050000	\$60.00
128	22603300060000	\$60.00
129	22603300070000	\$60.00
130	22603300090000	\$60.00
131	22603300100000	\$60.00
132	22603300110000	\$60.00

EXHIBIT C**VILLAGE GARDEN NORTH LANDSCAPING
AND LIGHTING ASSESSMENT DISTRICT
FY 2002/2003**

<u>Asmnt #</u>	<u>Assessor's Parcel No.</u>	<u>Assessment</u>
133	22603300120000	\$60.00
134	22603300130000	\$60.00
135	22603300140000	\$60.00
136	22603300150000	\$60.00
137	22603300160000	\$60.00
138	22603300170000	\$60.00
139	22603300180000	\$60.00
140	22603300190000	\$60.00
141	22603300210000	\$60.00
142	22603300220000	\$60.00
143	22603300230000	\$60.00
144	22603300240000	\$60.00
145	22603300250000	\$60.00
146	22603300260000	\$60.00
147	22603300270000	\$60.00
148	22603300290000	\$60.00
149	22603300300000	\$60.00
150	22603300310000	\$60.00
151	22603300320000	\$60.00
152	22603300330000	\$60.00
153	22603300340000	\$60.00
154	22603300350000	\$60.00
155	22603300360000	\$60.00
156	22603300370000	\$60.00
157	22603300380000	\$60.00
158	22603300390000	\$60.00
159	22603300430000	\$60.00
160	22603300440000	\$60.00
161	22603300450000	\$60.00
162	22603300460000	\$60.00
163	22603300470000	\$60.00
164	22603300480000	\$60.00
165	22603300490000	\$60.00
166	22603300500000	\$60.00
167	22603300510000	\$60.00
168	22603300520000	\$60.00
169	22603300540000	\$60.00
170	22603300550000	\$60.00
171	22603300560000	\$60.00
172	22603300570000	\$60.00
173	22603300580000	\$60.00
174	22603300590000	\$60.00
175	22603300600000	\$60.00
176	22603300610000	\$60.00

EXHIBIT C

VILLAGE GARDEN NORTH LANDSCAPING
AND LIGHTING ASSESSMENT DISTRICT
FY 2002/2003

<u>Asmnt #</u>	<u>Assessor's Parcel No.</u>	<u>Assessment</u>
177	22603300620000	\$60.00
178	22603300630000	\$60.00
179	22603300650000	\$60.00
180	22603300660000	\$60.00
181	22603300670000	\$60.00
182	22603300680000	\$60.00
183	22603300690000	\$60.00
184	22603300700000	\$60.00
185	22603300710000	\$60.00
186	22603300720000	\$60.00
187	22603300730000	\$60.00
188	22603300740000	\$60.00
189	22603300750000	\$60.00
190	22603300760000	\$60.00
191	22603300770000	\$60.00
192	22603300780000	\$60.00
193	22603300790000	\$60.00
194	22603300800000	\$60.00
195	22603300810000	\$60.00
196	22603300820000	\$60.00
197	22603300850000	\$60.00
198	22603300860000	\$60.00
199	22603300870000	\$60.00
200	22603300880000	\$60.00
201	22603300890000	\$60.00
202	22603300900000	\$60.00
203	22603300910000	\$60.00
204	22603600120000	\$60.00
205	22603600130000	\$60.00
206	22603600140000	\$60.00
207	22603600150000	\$60.00
208	22603600160000	\$60.00
	208	\$12,480.00

EXHIBIT D

METHOD OF SPREADING ASSESSMENTS

Each benefited residential lot in the Village Garden Maintenance District is determined to have equal benefit from the landscaping improvements and maintenance thereof. Therefore, each parcel is assessed in proportion to the total number of parcels in the district.

EXHIBIT E

ASSESSMENT DIAGRAM

The assessment district boundary coincides with the boundaries of Village Garden North Subdivision Units one through five. The subdivision maps were recorded and are on file with the Sacramento County Recorder's Office.

The Sacramento County Assessor's maps are incorporated by reference into the attached Assessment Diagram. The lines and dimensions of lots or parcels for the diagram are those lines and dimensions shown on the assessor's maps, which are on file and open to public inspection at the Sacramento County Assessor's Office. The distinctive designation of each lot or parcel shall be its assessor's parcel number.

DISTRICT BOUNDARY

POR. SEC. 5, RANCHO DEL PASO

226-32

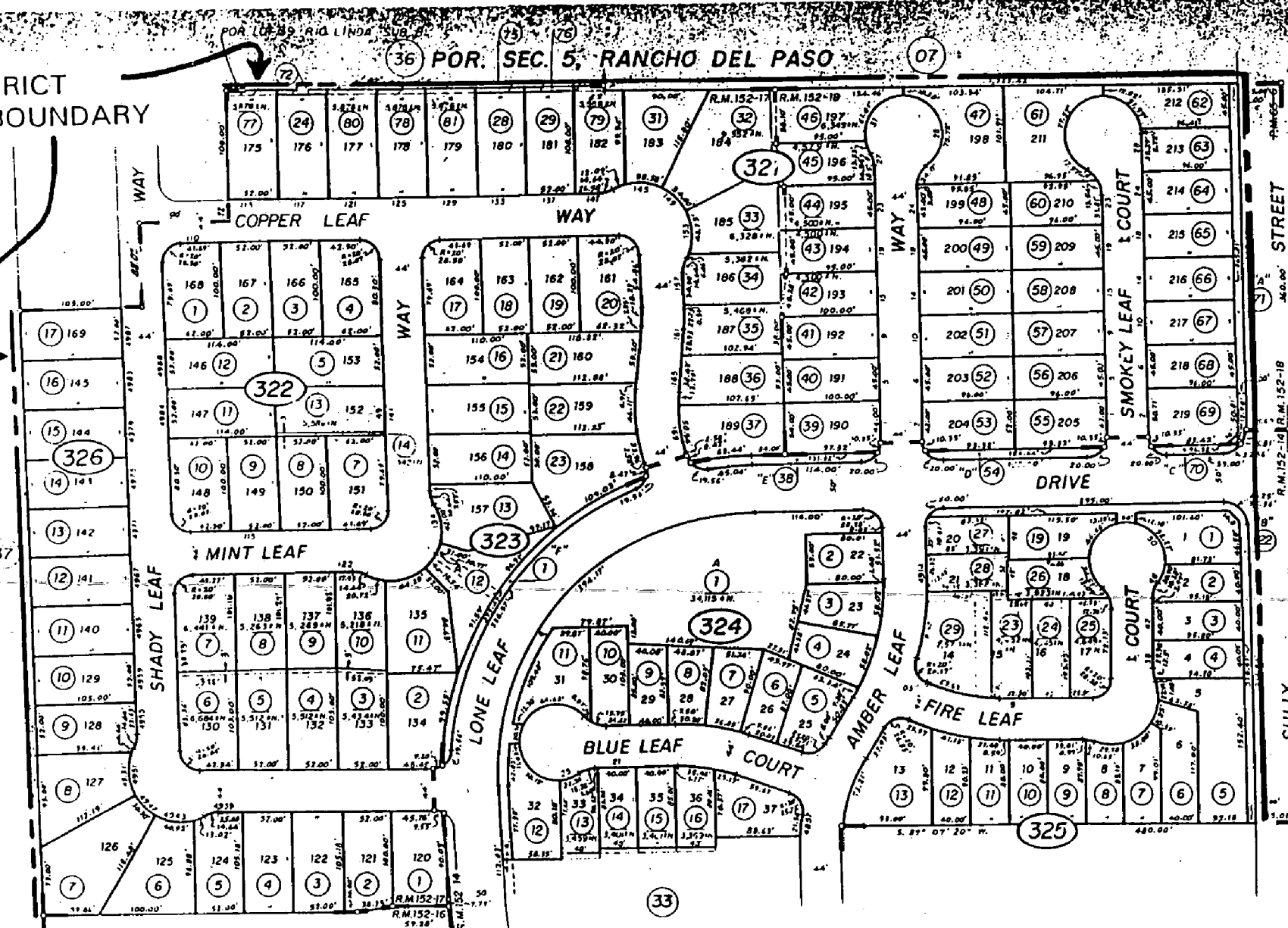
SANTA ANA AVENUE

EXHIBIT E

(38)

(37)

(23)



Por. Village Garden North Unit No. 1, R.M. Bk.152, Pg.14 (6-3-83)
 Village Garden North Unit No.4, R.M. Bk.152, Pg.17 (6-3-83)
 Village Garden North Unit No.5, R.M. Bk.152, Pg.18 (6-3-83)

CITY OF SACRAMENTO
 Assessor's Map Bk.226, Pg.32
 County of Sacramento, Calif.

POR. SEC. 5, RANCHO DEL PASO

226-33

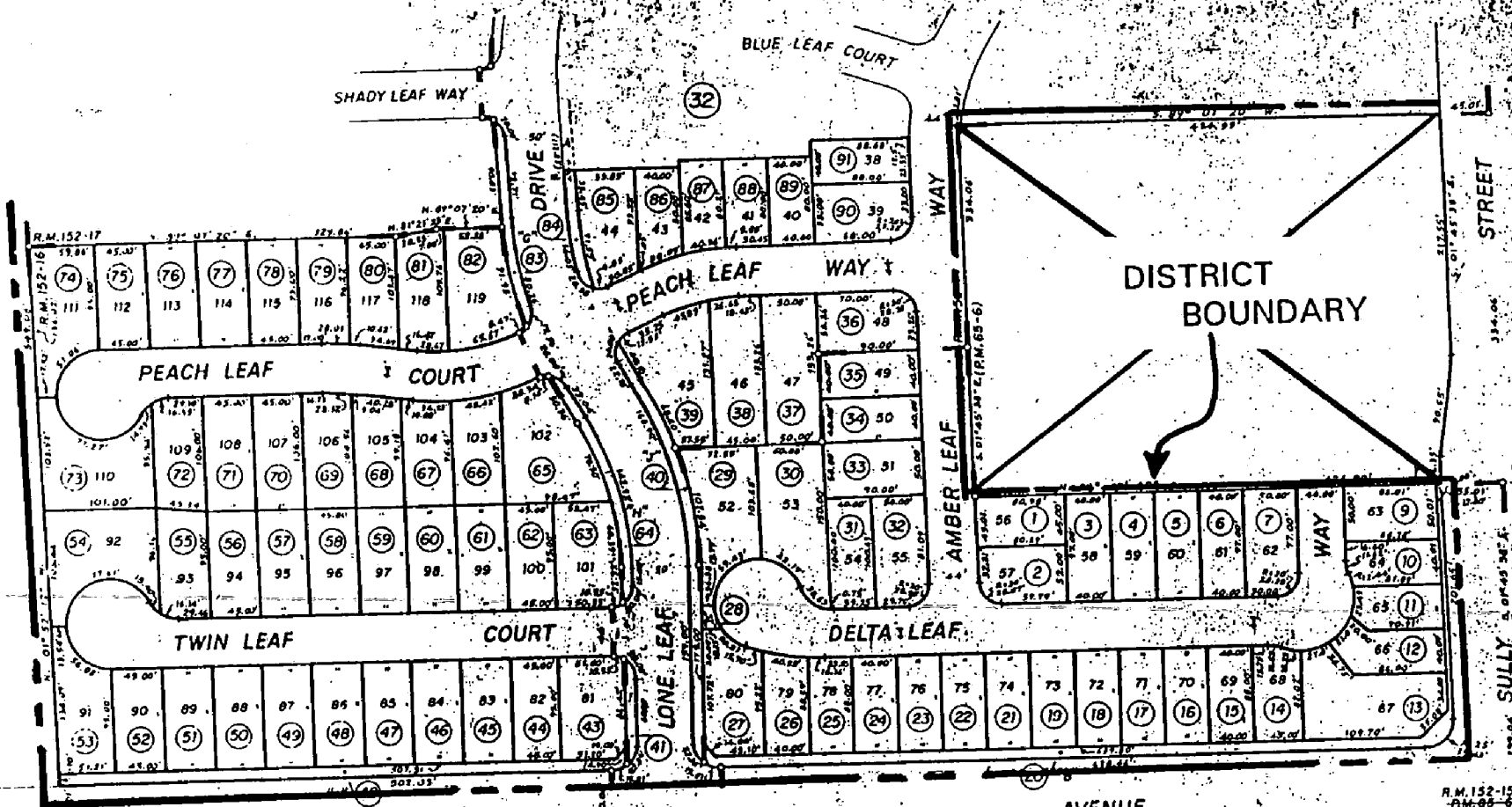


EXHIBIT E

Bk. 237

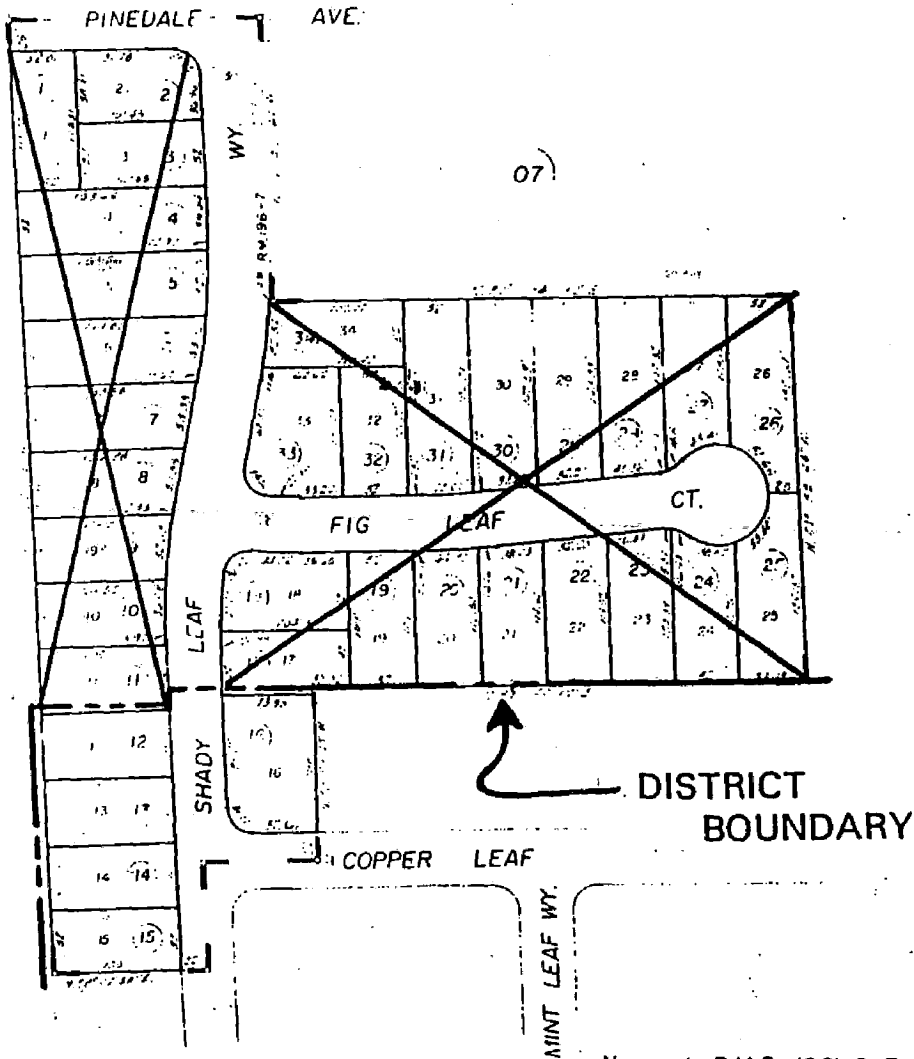
Por. Village Garden North Unit No. 1, R.M. Bk. 152, Pg. 14 (6-3-83)
 Village Garden North Unit No. 2, R.M. Bk. 152, Pg. 15 (6-3-83)
 Village Garden North Unit No. 3, R.M. Bk. 152, Pg. 16 (6-3-83)

CITY OF SACRAMENTO
 Assessors' Map Bk. 226, Pg. 33
 County of Sacramento, California

POR. SE. 1/4 SEC. 5, RANCHO DEL PASO

OCT 16 1988
226-36

07



07

07

EXHIBIT E

~ SINCE 1911 ~

1115 H Street, P.O. Box 1048, Sacramento, California 95812
Telephone (916) 444-2355 • Fax (916) 444-0636

SAC. CITY CLERK
915 I ST. #304
SACRAMENTO, CA - 95814

SC#: 399063

PROOF OF PUBLICATION

(2015.5 C.C.P.)

State of California)
County of Sacramento) ss

Notice Type: GSR SAC CITY RESOLUTION-1 PUB

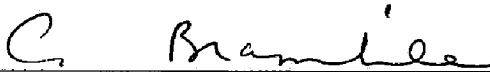
Ad Description: AD NO 9471

I am a citizen of the United States; I am over the age of eighteen years, and not a party to or interested in the above entitled matter. I am the principal clerk of the printer and publisher of the DAILY RECORDER, a daily newspaper published in the English language in the City of Sacramento, County of Sacramento, and adjudged a newspaper of general circulation as defined by the laws of the State of California by the Superior Court of the County of Sacramento, State of California, under date May 2, 1913, Case No. 16,180. That the notice, of which the annexed is a printed copy, has been published in each regular and entire issue of said newspaper and not in any supplement thereof on the following dates, to-wit:

05/28/02

Executed on: 05/28/2002
At Los Angeles, California

I certify (or declare) under penalty of perjury that the foregoing is true and correct.



Signature

**RESOLUTION NO. 2002-282
ADOPTED BY THE SACRAMENTO
CITY COUNCIL**

**ON DATE OF MAY 21, 2002
RESOLUTION OF INTENTION TO
ORDER IMPROVEMENTS FOR THE
VILLAGE GARDEN MAINTENANCE
DISTRICT (FY 2002/03)**

(Pursuant to the Landscaping and
Lighting Act of 1972)

1. The City Council intends to levy and collect assessments within the Village Garden Maintenance District during fiscal year 2002/03. The area of land to be assessed is located in the City of Sacramento, Sacramento County.
2. The maintenance of improvements to be made in this assessment district is generally described as follows:
The maintenance or servicing, or both, of any of the landscaping, water irrigation, and masonry wall, including (a) repair, removal, or replacement of all or part of any, improvement, (b) the provision for the life, growth, health, and beauty of landscaping, including cultivation, irrigation, trimming, spraying, fertilizing, or treating for disease or injury (c) the removal of trimmings, rubbish, debris, and other solid waste, and (d) the furnishing of water for the irrigation of any landscaping, the operation of any fountains, or the maintenance of any other improvements.
3. In accordance with this Council's resolution directing the filing of the annual report, the Engineer of Work has filed with the City Clerk the report required by the Landscaping and Lighting Act of 1972. All interested persons are referred to that report for a full and detailed description of the improvements, the boundaries of the assessment district, and the proposed assessments upon assessable lots and parcels of land within the assessment district.
4. The City Council will conduct a public hearing on Tuesday, June 11, 2002 at 2:00 pm on the question of the levy of the proposed annual assessment. The hearing will be at the meeting place of the City Council located in City Hall, 915 I Street, 2nd Floor, Sacramento, California.
5. The City Clerk is authorized and directed to give notice of hearing as required by the Landscaping and Lighting Act of 1972.

HEATHER FARGO
MAYOR
ATTEST:
VALERIE BURROWES
CITY CLERK
AD NO. 9471
05/28/02

SC- 399063#