

8



# CITY OF SACRAMENTO

## DEPARTMENT OF PUBLIC WORKS

August 23, 1985

ENGINEERING DIVISION

City Council  
Sacramento, California

Honorable Members In Session:

SUBJECT: Casa Do Rio, 7290 Pocket Road (P=85-082) - Final Subdivision Map Approval

THOMAS M. FINLEY  
Engineering Division Manager  
CITY MANAGER'S OFFICE  
**RECEIVED**  
SEP 4 1985

### SUMMARY

It is requested that the City Council adopt a Resolution approving the final Subdivision Map for Casa Do Rio, located at 7290 Pocket Road. Adoption of the Resolution is recommended.

### BACKGROUND

On April 16, 1985, the City Council approved a tentative Subdivision Map, by adopting Resolution No. 85-284.

All conditions and stipulations set forth in the staff subdivision report have been complied with, and all improvements have been installed and accepted by the Director of Public Works. The final Subdivision Map is now being presented for final approval.

### FINANCIAL DATA

All costs pertaining to the subdivision are being paid by the subdivider.

### RECOMMENDATION

It is recommended that the attached Resolution approving the final Subdivision Map be adopted.

RECOMMENDATION APPROVED:

*Walter J. Slipe*

WALTER J. SLIPE  
City Manager

BF:yg  
Attachments  
Fri-1,A-22

Respectfully submitted,

*Thomas M. Finley*  
THOMAS M. FINLEY  
Engineering Division Manager

**APPROVED**  
BY THE CITY COUNCIL

SEP 10 1985

OFFICE OF THE  
CITY CLERK

Approved:

*Melvin H. Johnson*  
MELVIN H. JOHNSON  
Director of Public Works

September 10, 1985  
District No. 8

RESOLUTION NO. 85-688

ADOPTED BY THE SACRAMENTO CITY COUNCIL ON DATE OF

SEPTEMBER 10, 1985

APPROVING FINAL MAP FOR CASA DO RIO  
(P-85-082)

WHEREAS, THE COUNCIL OF THE CITY OF SACRAMENTO FINDS AND DETERMINES AS FOLLOWS:

A. The final Subdivision Map of Casa Do Rio, together with provisions for its design and improvement, is consistent with the General Plan of the City of Sacramento and the 1976 South Pocket Community Plan .

B. The final map is in substantial compliance with the previously approved tentative map.

NOW, THEREFORE, BE IT RESOLVED BY THE COUNCIL OF THE CITY OF SACRAMENTO AS FOLLOWS:

1. The final map of Casa Do Rio, be, and the same is hereby approved subject to the execution by all parties of the subdivision improvement agreement for that subdivision.

2. All offers of dedication shown on said map are hereby accepted.

\_\_\_\_\_  
MAYOR

ATTEST:

**APPROVED**  
BY THE CITY COUNCIL

SEP 10 1985

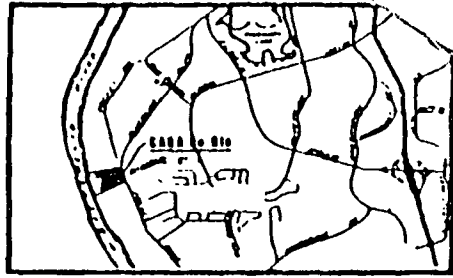
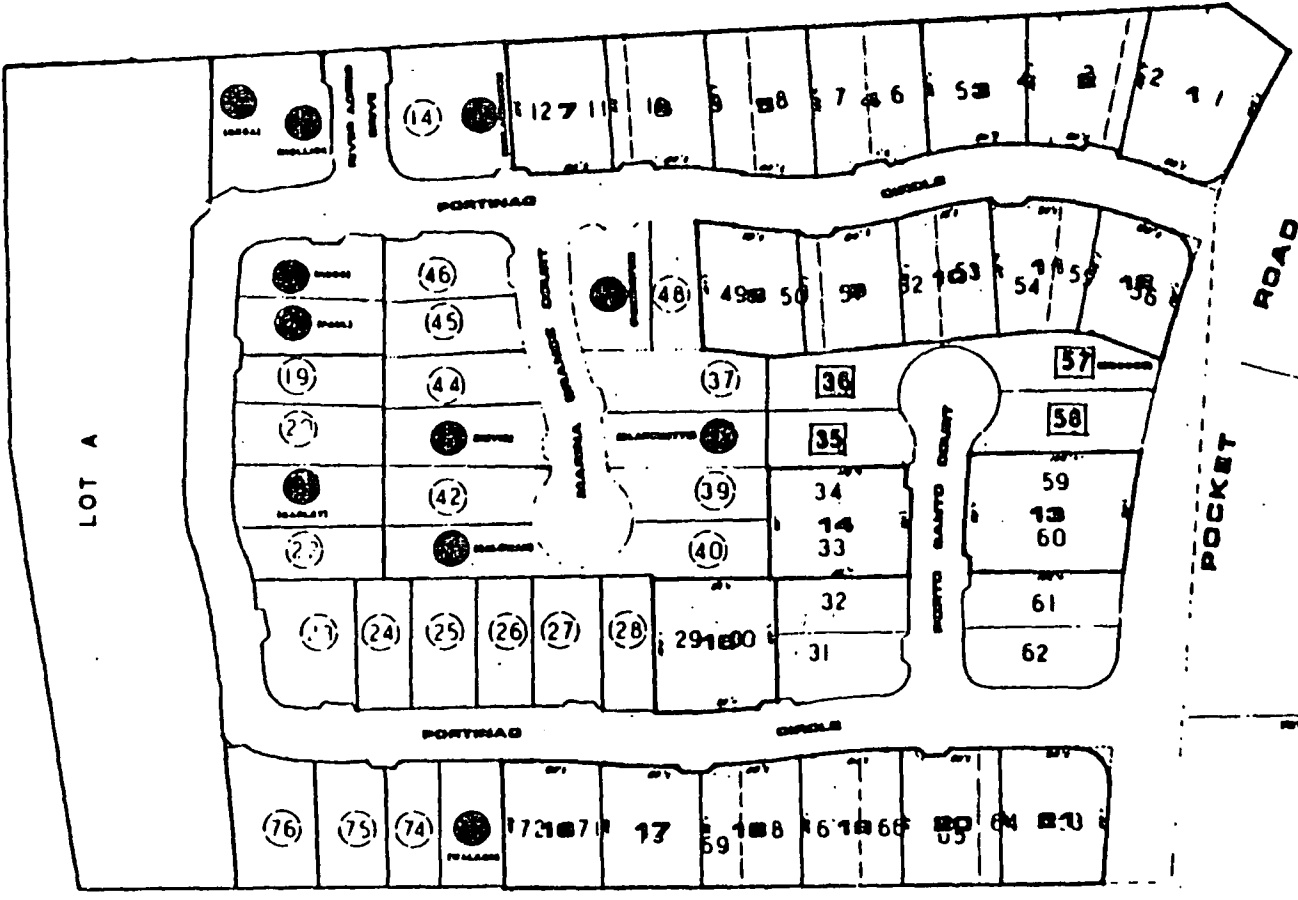
OFFICE OF THE  
CITY CLERK

\_\_\_\_\_  
CITY CLERK

285-183

6

SACRAMENTO RIVER



LOCATION MAP



ROAD

SAC RIVER WAY

POCKET

REVERBATE WAY

**BLANK HOUSE**  
 4 BR UNIT  
 100 SHADYBARK ROAD  
 SACRAMENTO, CA 95827

**REMODEL**  
 1 1/2 UNIT, STEPHENSON & HILL  
 170 1/2 FLORIAN ROAD  
 SACRAMENTO, CA 95811

**LAKELINE TOWNHOMES**  
 2-1A

**CROCKER TOWNHOMES**  
 2-1

**LAKELINE HSE**  
 10 UNIT 1/2 PLOT  
 FINISHED LOTS

**CROCKER HSE**  
 21 SINGLE-FAMILY UNITS

**ACREAGE**  
 5.0 +/- ACRES, NET

**REMODEL**  
 4.6 D.U. PER NET ACRE

**WATER SUPPLY**  
 PUBLIC UTILITIES - EXISTING

**SEWER DISPOSAL**  
 PUBLIC SEWERS - EXISTING

**CROCKER APPROXIMATE**  
 SACRAMENTO CITY STANDARDS - EXISTING

**ALSO SEEING UNIT NUMBERS**  
 011-010-01, 02, 03, 04, 16, 17, 25, 26,  
 27, 28, 29 & 30  
 071-050-01, 02, 03, 04, 05, 06, 07, 08,  
 09, 10, 11, 12, 13, 14, 15, 18, 19,  
 21, 22, 23, 24, 25, 26,  
 29 & 30

5  
3  
1  
4  
14

**LEGEND:**

- OWNER OCCUPIED UNITS - 11
- INCOMPLETE VACANT UNITS - 61
- MODEL HOMES - 4
- NEW LOT NUMBERS