



2.5

DEPARTMENT OF  
PUBLIC WORKS

DEVELOPMENT SERVICES DIVISION

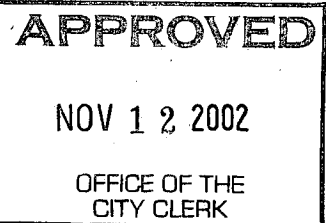
CITY OF SACRAMENTO  
CALIFORNIA

1231 I STREET, 2<sup>nd</sup> Floor  
SACRAMENTO, CA 95814-2700

PH. (916) 264-7995  
FAX (916) 264-5786

October 23, 2003

City Council  
Sacramento, California



Honorable Members In Session:

**SUBJECT:** APPROVAL OF PARCEL MAP ENTITLED "GRANITE REGIONAL PARK - 2"  
(P00-066)

**LOCATION/COUNCIL DISTRICT:**

Southeast corner of Power Inn Road and Romona Avenue.  
Council District 6

**RECOMMENDATION:**

This report recommends the City Council adopt the attached resolution approving the Parcel Map entitled "Granite Regional Park -2".

**CONTACT PERSON:** **Bob Robinson, Supervising Surveyor, 264-8970**

**FOR COUNCIL MEETING OF:** November 12, 2002

**SUMMARY:**

On March 22, 2001, the Planning Commission approved a Tentative Parcel Map by adopting a Notice of Decision. All conditions of the tentative map have been met by the Subdivider, Regional Park Limited, A California Limited Partnership. The Parcel Map requires approval by the City Council. See Exhibit "A" for project location.

Department of  
**PUBLICWORKS**  
CITY OF  
SACRAMENTO

City Council  
Granite Regional Park - 2  
October 23, 2002

**COMMITTEE/COMMISSION ACTION:**

None.

**BACKGROUND:**

On March 22, 2001, the Planning Commission approved a Tentative Parcel Map by adopting a Notice of Decision. Pursuant to Sacramento City Code, Section 16.08.010, and Government Code Section 66458, the City Council shall approve, conditionally approve, or deny parcel maps. The map presented conforms to all the requirements of the Government Code and Title 16 of the City Code, applicable at the time of conditional approval of the Tentative Map. The Parcel Map is consistent with the City General Community Plan. All conditions in the staff subdivision report have been met and the Parcel Map is presented for approval.

**FINANCIAL CONSIDERATIONS:**

All subdivision costs are being paid by the subdivider, Regional Park Limited, A California Limited Partnership.

**ENVIRONMENTAL CONSIDERATIONS:**

On March 22, 2001, the Planning Commission adopted a Notice of Decision ratifying the Negative Declaration and approving the Mitigation Monitoring Plan for this project.

The negative declaration was approved, pursuant to the requirements of California Environmental Quality Act (CEQA).

**POLICY CONSIDERATIONS:**

Pursuant to Sacramento City Code, Section 16.08.010, and Government Code Section 66458, the City Council shall approve, conditionally approve, or deny parcel maps. The map presented conforms to all the requirements of the Government Code and Title 16 of the City Code, applicable at the time of conditional approval of the Tentative Map.

The Council action recommended in this report supports the following City Strategic Plan goals:

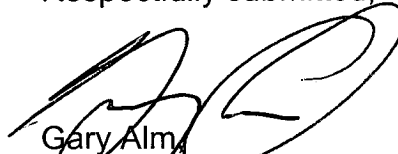
- Enhance and preserve the neighborhoods
- Promote and support economic vitality

City Council  
Granite Regional Park - 2  
October 23, 2002

**ESBD CONSIDERATIONS:**

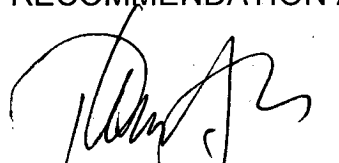
City Council adoption of the resolution is not affected by City policy related to the ESBD Program.

Respectfully submitted,




Gary Alm,  
Manager, Development Services

RECOMMENDATION APPROVED:



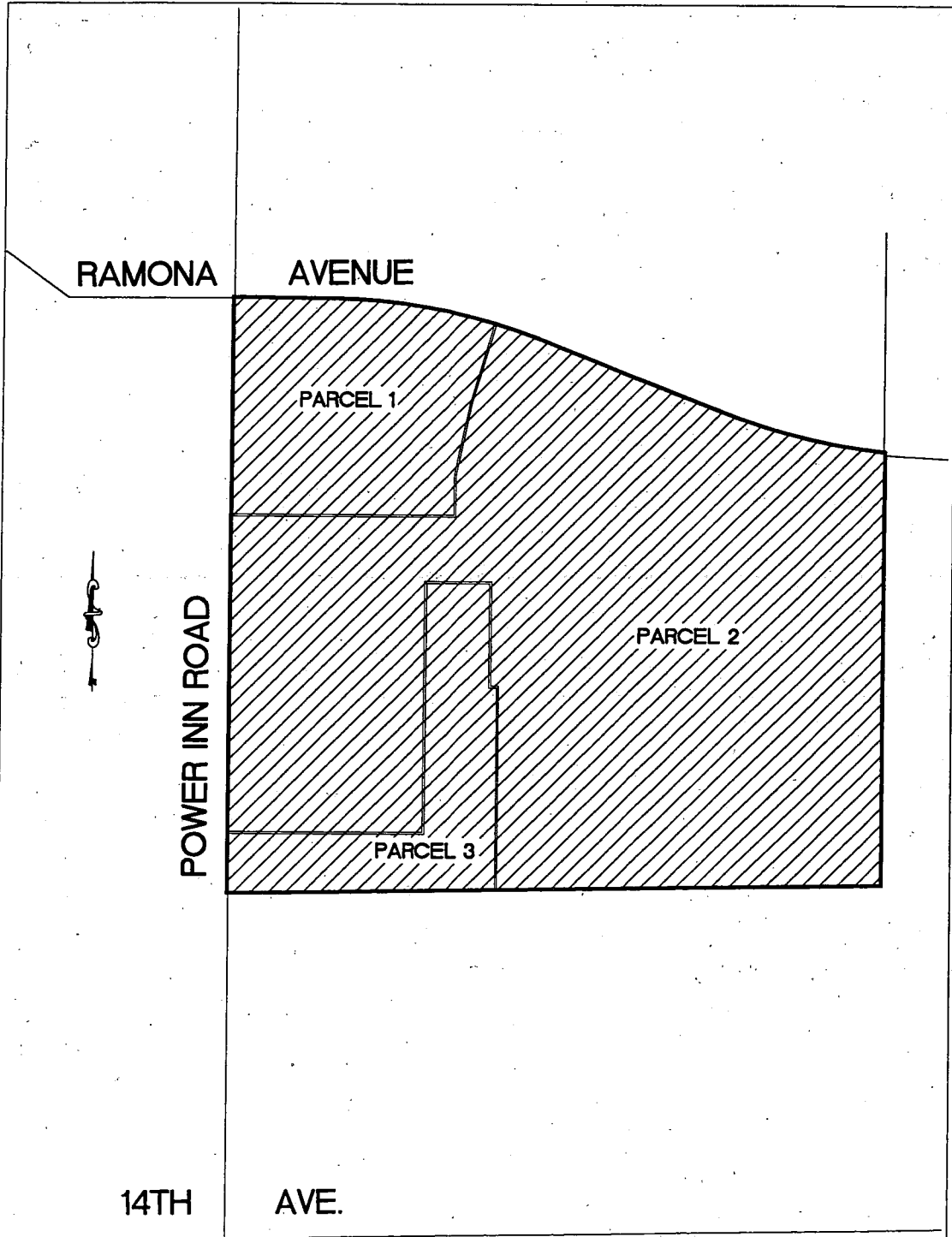
ROBERT R. THOMAS  
City Manager

Approved:



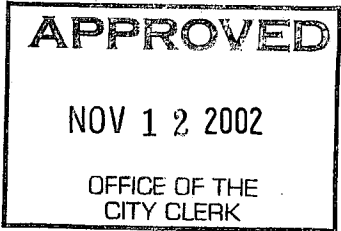
Michael Kashiwagi  
Director of Public Works

# GRANITE REGIONAL PARK 2



LOCATION MAP

NOT TO SCALE



**RESOLUTION NO. 2002-742**

ADOPTED BY THE SACRAMENTO CITY COUNCIL

ON DATE OF \_\_\_\_\_

**APPROVING PARCEL MAP ENTITLED "GRANITE REGIONAL PARK - 2" (P00-066)**

**WHEREAS, THE COUNCIL OF THE CITY OF SACRAMENTO FINDS AND DETERMINES AS FOLLOWS:**

- A. The Parcel Map entitled "Granite Regional Park - 2", located at Southeast corner of Power Inn Road and Romona Avenue, with provisions for its design and improvement, is consistent with the City General Community Plan.
- B. The Parcel Map is in substantial compliance with the previously approved tentative parcel map.

**NOW, THEREFORE, BE IT RESOLVED BY THE COUNCIL OF THE CITY OF SACRAMENTO AS FOLLOWS:**

- 1. The Parcel Map is hereby approved.

\_\_\_\_\_  
MAYOR

ATTEST:

\_\_\_\_\_  
CITY CLERK

**FOR CITY CLERK USE ONLY**

RESOLUTION NO.: \_\_\_\_\_

DATE ADOPTED: \_\_\_\_\_