

AGENDA**Art In Public Places Committee**

4:00 pm – 6:00 pm

Coloma Community Center

4623 T Street, Sacramento, Ca 95819

Gold Run Room

Wednesday, May 2, 2007

**PLEASE NOTE: June 13, 2007 APP meeting and from then on
changed to 2nd Wed. of the Month**

Time	Item #	Item	Presenter
	1.	CALL TO ORDER	Gotthart
	2.	REFRESHMENTS: L. Eder	
	3.	APPROVE AGENDA: May 2, 2007	
	4.	APPROVE MINUTES: April 4, 2007	

5. ACTION ITEMS:			
	5a	County Juv. Hall Wing A Revised Proposal (Talle)	Walker-Smith
	5b	Arts Plan for Oak Park Community Center	Walker-Smith
	5c	Libraries Arts Plan	Bloom/LaZansky

6. MICROGRANT APPLICATION:			
	6a	None	

7. DISCUSSION ITEMS:			
	7a	VAC Liason	
	7b	APP Retreat	Bloom/Gotthart

8. WORKSHOP ITEMS:			
	8a	None	

9. INFORMATIONAL ITEMS:			
	9a	Update on Shimo Installation at Convention Center	Bloom
	9b	Update on Tour brochure	Sronce
	9c	Update on Proposal for Juv. Hall Plaza	DW Smith

10. COMMITTEE REPORTS
Docent Sub-Committee, Visual Arts Committee
11. CHAIR'S REPORT
12. ADMINISTRATOR'S REPORT
13. PUBLIC TESTIMONY
14. ADJOURNMENT: 6pm

REMINDERS:

Next Meeting:
Wed. June 13, 2007

May 5, 2007- Granite Reg.
Park Dedication.

Staff contact information for day of meeting:
Cari LaZansky's cell #: 849-6602

Linda Bloom's cell #: 715-4729

**MINUTES OF APP COMMITTEE MEETING
SACRAMENTO METROPOLITAN ARTS COMMISSION**

Date: Wednesday, April 4, 2007
Time: 4:00pm-6:00pm
Location: Coloma Community Center, Gold Run Room, 4623 T St., Sacramento, CA
Present: Lynn Eder, Nancy Gotthart, Don Sronce, Jennifer Tachera
Staff: Linda Bloom, Cari LaZansky
Excused/Absent: Carlin Naify, Linda Johnston-Panattoni, John Nicolaus, Marquita Plomer, Carolyn Schneider, Susan Selix
Guests: Jan Geiger, Don Tarnasky, Diana Walker-Smith

Meeting called to order at 4:05 P.M. by chair Nancy Gotthart.

Motion: Sronce moves, Eder seconds to approve April agenda. Motion passes.

Motion: Sronce moves, Eder seconds to approve minutes of March 2007. Motion passes.

ACTION ITEMS:

Cattery Proposal: LaZansky reviews City Cattery proposal by artist Peter VandenBerge. Artist proposes five ceramic cat sculptures and two drawings for Cattery lobby. Sculptures to be located in niches/alcoves of lobby walls. A lighting element to be located in each niche above each artwork. The two drawings to be located on lobby wall near reception desk. Budget for project is \$13,000. Arts plan approved by APP Committee and Commission in March 2007. Committee notes that the City is lucky to receive such a large amount of artwork from this nationally recognized artist for such a small budget.

Motion: Tachera moves to approve artist proposal. Sronce seconds. Motion passes.

Juvenile Hall Plaza Revised Arts Plan: Project Manager Diana Walker-Smith explains that APP staff met with County and all agreed to move forward with a limited competition for Plaza project with invitations to three regional artists. (Original artist selection panel was not willing to move forward with other selected finalists for Plaza project). Walker-Smith is contacting artists such as Topher Delaney (Seam Studio), Cao Perrot Studio, possibly Ned Kahn. She explains that since \$1,000 design fee is not enough for these nationally recognized artists to create new proposals for this project, that selection panel can make final selection from viewing artists' previous work, more like an RFQ.

Bloom requests APP members contact her with names of artists they wish to have considered and that an APP member work with Diana and Linda on finding artists with appropriate experience to contact. J. Tachera agrees to help with search.

Also, Bloom asks for APP Committee to consider taking \$10,000 from Juvenile Hall Plaza project to fund the Juvenile Hall "*Extinction is Forever*" mural de-accession. This eliminates APP having to ask County for additional funding for mural de-accession and for creation of educational display. Also a Mexico address for the artist has been found and the artist is being contacted by County Attorney. (Note: since the APP meeting, an appraisal for mural has been received with cost estimate of \$58,015.)

Motion: Sronce moves to approve \$10,000 of Plaza funding for mural de-accession. Tachera seconds. Motion passes: 4 aye, 0 abstain, 0 noe.

Motion: Eder moves to approve limited competition for Plaza project. Tachera seconds. Motion passes: 4 aye, 0 abstain, 0 noe.

Juvenile Hall Wing A Proposal: Bloom reports that artist Tricia Talle is not ready yet with a revised proposal for Wing A. This item to be placed on May agenda.

INFORMATIONAL ITEMS:

PARR Panel: Walker-Smith reports that Public Art Resource Registry (PARR) received 84 submissions. Panel members are Nancy Gotthart, Numan Huseinbegovic, Brenda Louie, Carlin Naify. Walker-Smith states that panel needs a fifth juror. Jan Geiger agrees to serve on PARR panel.

ACTION ITEMS:

City Parks Arts Plan: D. Tarnasky gives background on arts plan. Currently a total of 13 park locations, eight in Natomas region. Current budget for all parks combined is \$502,000, with funds for some parks increasing. Funding may increase another \$70,000. Artwork installation dates vary. Park artists to be selected by a panel through Public Art Resource Registry (PARR). Bloom suggests Dixieanne Park may be good project for mentoring opportunity, since it's located in Del Paso area near "Surreal Estates" artists and SMAC office. Dixieanne Park could be a PARR, "Surreal Estates", or local artist project.

Park panels to meet in late May. N. Gotthart agrees to serve on panel. APP Committee to be contacted by staff re: serving on panels.

Motion: Sronce moves to approve arts plan with artists for 12 parks selected through PARR. A Surreal Estates or other local artist/s to be invited to submit proposal for Dixieanne Park as a mentoring opportunity. Eder seconds. Motion passes.

Sierra 2 Arts Plan: LaZansky reviews arts plan. Opportunities include artwork located in empty niches or "frames" near the first floor interior restrooms, a mural leading up the interior stairwell wall, new exterior signage or lighting on 24th Street side of building. Budget for artwork is \$14,979. Artist to be selected by a panel through the Public Art Resource Registry (PARR). Artwork to be installed by Fall 2007. J. Tachera agrees to serve on selection panel.

Motion: Tachera moves to accept arts plan, adding mentoring opportunity. Eder seconds. Motion passes.

Microgrant Application:

Jian Wang Exhibition: Bloom states that Wang is requesting funds to help with cost of exhibition catalog for his show at CSU, Sacramento. Wang's donated piece at Convention Center and commissioned artwork at City Hall in APP collection are cited in catalog along with name of Sacramento Metropolitan Arts Commission. Committee feels that Wang has made an important artistic contribution to the community and serves as an excellent role model for emerging artists.

Motion: Eder moves to contribute \$600 in recognition of Wang's contribution to community and to the APP Collection. Motion passes.

DISCUSSION ITEMS:

New Members: Bloom states that APP will have at least four new openings as of July 2007, when some members term out. She requests Committee to think about recruiting new members.

APP Retreat: Bloom wants to schedule retreat before members term out – sometime in May. Staff to contact committee with possible retreat dates.

INFORMATIONAL ITEMS:

Tour Brochure Sub-Committee: D. Sronce gives update. Meeting with SMAC staff and Commission Chair Geiger to discuss how print brochure could complement new web/on line collection design. Geiger states that Commission is aware that brochure is needed and is a top

priority. Cost will be about \$4,000 for 5000 copies. It will focus more on Convention Center and downtown artworks. There is also approval to proceed with Airport and City Hall brochures. Minimal funds but nice design work will be dedicated to these projects in order to use them as temporary guides until on- line collection content is ready.

SMAC Gallery Program Schedule: Committee reviews exhibitions schedule. Gotthart encourages members to attend receptions and exhibitions. Bloom encourages members to attend City Hall gallery events and acknowledges the Mayor's support for these receptions.

Adjournment: 6:05 P.M.

of site-specific public art. The APP Committee, in endorsing standards of excellence and in support of APP/SMAC's commitment to artistic integrity and client service, directed the use of the limited competition format.

Commission/Committee Action: On April 4, 2007 at a regularly scheduled meeting, the APP Committee approved the revised arts plan and will receive an update on the proposed artists at its meeting on May 2, 2007.

Environmental Considerations: The artist will provide engineering drawings and installation details to comply with all applicable codes, CEQA Guidelines 15301 and work within the parameters established by the County Department of Architectural Services. APP staff and the artist will be required to attend planning, review and coordination meetings with County project teams and will mitigate any safety, durability and maintenance concerns.

Rationale for Recommendation: Few applicants from the original project RFQ had experience as environmental artists. Due to this lack of experience among applicants, the panel, design team, and APP were led to suggest a limited competition for the plaza project. The panel, comprised of Paul Santacroce, Architectural Services Division; Maynard Feist, project architect; Gary Steele, Chief Deputy, Probation Dept.; and Kristina Thompson, met with APP staff and consultant on March 20, 2007 to review action taken by APP and SMAC. The panel agreed at that time to a limited competition. APP approved a revision to the original arts plan to allow for a limited RFQ competition.

Financial Considerations:

- Total project budget for APP Juvenile Hall Expansion Project \$ 625,680
- Total administrative fee to APP \$ 114,000
- Total funds for artwork \$ 511,680

Breakdown

- Funds available for Plaza (\$5,000 design,\$192,000 proposal) \$ 197,000
- Funds available for Admin. Build. Lobby \$ 94,500
- Funds available for Visitor's Center Lobby \$ 60,500
- Funds for finalist proposals (Admin., Visitor Cnt., Plaza) \$ 6,000
- Funds available for Joint Plaza \$ 153,680
- CIP Number G464

Emerging Small Business Development (ESBD): APP will make every effort to register eligible artists and vendors for the ESBD program.

Respectfully Submitted by: _____

Linda Bloom
Art in Public Places Administrator

Table of Contents:

	Pg	1-2	Report/ Table of Contents
Attachments			
1	Pg	3	Background
2	Pg	4 -22	Resumes

Rhyena Halpern
Executive Director
Sacramento Metropolitan Arts Commission

ATTACHMENT 1

Background

Original RFQ: Outreach for the Public Entry Plaza project of the Juvenile Hall Expansion Project was conducted through an open Call RFQ to the eleven contiguous counties to Sacramento with applications due to SMAC offices on October 20, 2006. A Phase 1 panel reviewed materials from forty-nine applicants (twelve were disqualified due to residency and waiting period parameters) including CDs, resumes, and letter of interest on November 16, 2006. Three finalists were selected for this project and paid \$1,000 each to prepare proposals. Public Entry Plaza finalists were: Troy Corliss, Ed Haag, and the team of Cal Ling and Greg Melton.

The Phase 2 panel met again on January 23, 2007 to review proposals by the three finalists. No one was selected for recommendation. However, the team of Cal Ling and Greg Melton were asked to revise their proposal and re-submit the proposal for further consideration. On February 7, 2007, the panel reconvened to review the Ling/Melton proposal. The panel did not recommend the revised proposal go forward but requested that a design contract be issued so that Ling/Melton could revise their proposal once again.

Revised Arts Plan: The APP Committee met on March 7, 2007 and voted not to recommend the issuance of a design contract. SMAC meet on March 12, 2007 and upheld the recommendation of the APP Committee. On March 2, the artist selection panel for the Juvenile Hall projects met and agreed to a limited competition in order to select a new artist for the public entry plaza. On April 4, 2007, APP met and approved a revision to the original arts plan to allow for a limited RFQ competition.

Revised Artist Selection: The APP Committee, County project team, and staff were asked to present potential artists for consideration for the limited competition. Criteria discussed by the APP Committee included a California artist with experience in environmental artwork design, fabrication, and installation. Artists mentioned include Topher Delaney, Andy Cao, Ned Kahn, John Roloff, Gordon Heuther and the team of Jennifer Madden/ Jeff Reed. Artists Kahn and Roloff were not interested in the project and Heuther is already under contract to create public artwork for a County Water Treatment Plant. Artists Delaney, Cao and the team of Madden/ Reed have accepted the parameters of the RFQ and are interested in developing a proposal for the project.

ATTACHMENT 2

RESUMES

Andy Cao, FAAR'02

- 1965 Born in Viet-Nam.
- 1985 Studied architecture at University of Houston, Texas.
- 1994 Bachelor of Science in Landscape Architecture, California State Polytechnic University, Pomona
- 1999 First scholarship to study glass art at Pilchuck Glass School, Seattle, Washington
- 2000 Second scholarship to study glass art at Pilchuck Glass School, Seattle, Washington
- Received research grant from the Charles Lindbergh Foundation for recycled glass product development.
- 2001 Recipient of the Rome Prize Fellowship in Landscape Architecture at the American Academy in Rome, Italy.
- 2002 Fellow of the American Academy in Rome (FAAR'02)
- Invited Juror and Guest Lecturer at Cal Poly, Pomona, Texas A & M, Penn State University and Cornell University (Rome Program)
- 2003 Guest lecturer, taught first and fourth year landscape design studio, California State Polytechnic University, Pomona.
- 2005 Guest artist at Landscape Design Symposium, Dumbarton Oaks, Washington DC
- Selected for Site Integrated, Artist Registry Volume V, 4culture, Seattle, Washington
- 2006 Guest Lecturer at the American Academy in Rome, New York and California State Polytechnic University, Pomona.
- Co-Founder of Cao | Perrot Studio with landscape designer Xavier Perrot.
- 2007 Guest Lecturer at the Henry Art Gallery Museum, Seattle, Washington
- Won Medium Award in Landscape Design, Material ConneXion, New York.

Projects and Exhibitions

- 2007 Public Art commission from 4Culture for Bow Lake Transfer Station, Seattle, Washington.

Public Art commission from 4Culture for 98th Street Corridor, White Center, Washington.

Public Art commission from Parks & Recreation & Office of Arts & Cultural Affairs for Dexter Art Park, Seattle, Washington.

"Cloud" Temporary installation, Fairchild Botanic Garden, Miami.

2006 "The Missing Peace: The Dalai Lama Portrait Project" art installation, group exhibition, UCLA Fowler Museum, Loyola University Museum (Chicago) & Rubin Museum (New York).

"Jardin des Hesperides". Garden installation, collaborated with landscape designer Xavier Perrot, Metis International Garden Festival, Quebec, Canada.

Selected participant at the National Triennial Design Exhibition, 'Design Life Now', Cooper-Hewitt National Design Museum, New York

2005 "OP Hatch Shell" temporary public art installation, collaborated with architect Patrick Tighe, Clover Park, Santa Monica, California

"Fete du Mimosa" temporary public art installation, collaborated with landscape designer Xavier Perrot, Medici Fountain, Luxembourg Gardens, Paris, France

2004 "Lullaby Garden", collaborated with landscape designer Xavier Perrot, Cornerstone Festival of Gardens, Sonoma, California

2003 "Cocoons" temporary public art installation in Emeryville, California

2002 "Red Box" installation and performance, Fine Arts Fellows Annual Exhibition at the American Academy in Rome, Italy

Glass installation and landscape design for Willheim Residence, Los Angeles, California, designed by architect John Pawson.

Projects & Exhibitions

2001 "Millenium Park" Chicago, selected participant for the international design competition

"Desert Sea" installation, Festival des Jardins, Chaumont-sur-Loire, France (2001-2002)

Glass installation for Andrew Dibben Boutique, Los Angeles, California

"Nesting", glass installation, Baccara Spa & Resort, Santa Barbara, California

2000 Restored gardens and installations at Andre Balazs' Chateau Marmont Hotel and Standard Hotels, Hollywood and Downtown LA, California.

Designed "Cocoon" lamp prototype for Andromeda Glass Factory, Murano, Italy.

1999 Co-Founder of Glass Garden Inc. with Stephen Jerrom, Los Angeles, California.

Window installation for "Voyage" at Maxfield, Los Angeles, California

"Walking on Clouds" public art installation proposal, Los Angeles International Airport (LAX), California (unbuilt)

1998 Designed and built the Glass Garden, Los Angeles, California.

Cao | Perrot Studio
3511 West 6th Street Studio 5 Los Angeles CA 90020 Mobile: 213 458 2901
www.caoperrotstudio.com

References

1. **Adele Chatfield-Taylor, FAAR'84**
President

American Academy in Rome
7 East 60 Street
New York, NY 10022
Tel 212 751 7200 ext 22
a.chatfield-taylor@aarome.org
www.aarome.org

2. **Charlotte M. Frieze**
Garden Editor

House & Garden
750 Third Avenue
New York, NY 10017
Tel 212 286 4590
Charlotte.Frieze@condenast.com

3. **Ann Videriksen**

Design Communication
11922 Gorham Avenue
Los Angeles, CA 90049
Tel 310 207 1015
a.videriksen@verizon.net

4. **Renee Tanner**

4Culture
101 Prefontaine Place South
Seattle WA 98104
Tel 206 296 8692
Renee.tanner@4culture.org

Cao | Perrot Studio
3511 West 6th Street Studio 5 Los Angeles CA 90020 Mobile: 213 458 2901
www.caoperrotstudio.com

Bibliography

Magazines

Paisajismo	"Espacios Exteriores Efimeros", April 2007, Spain
Garden Design Magazine	"In Design", January - February, 2007
Architectures A Vivre	"Les Eclats de Couleur de Cao et Perrot", November – December, 2006, France
The Robb Report Collection	"The Glass is Always Greener", November 2006
Interior Design	"CenterFold: On The Half Shell", February 2006
Architecture Digest	"Movie Colony Hotel", October 2005
Landscape Architecture	"January in Paris", June 2005
House & Garden	"In the Garden", April 2005
Landscape Architecture	"Hortus Ludens", February 2005
Jardins Passion & Decoration	"Etats-Unis: Californian Dreams", November – December, 2004
Garden Design	"Cornerstoned", November – December 2004
34	"Two takes on modern landscape", October - November, 2004
Gardens Illustrated	"Out of the Blue", October, 2004
Landscape Architecture	"Cornerstone Festival of Gardens", September 2004
NPR: Morning Edition	"Cornerstone Festival: The Art of Landscape Design", September 9, 2004
New York Times	"Avant-Green: Landscaping As a Fine Art", August 15, 2004
Landscape Architecture	"Shared Wisdom: After the Glass Garden", April 2003
La Repubblica delle Donne	"Sei Giardini delle delizie", August 3, 2002, Italy
House & Garden	"Desert Sea", May 2002

Ville Giardini	"Frantumi di Luce", March 2002, Italy
Jalouse	January 2002
100 Ideas	"Paysages de matieres", September 2001, France
Angelino	October 2001
Landscape Architecture	September 2001
Sunset Magazine	August 2001
Landscape Architecture	August 2001
Los Angeles Times	"Desert Sea", July 5, 2001
Point de Vue	"Les reves de verre", May 15, 2001, France
Design Times	May/June 2001
Palm Spring Life	May 2001
New York Times	April 26, 2001
Los Angeles Times Magazine	December 17, 2000
New York Times Magazine	November 4, 2000
Paris Match	"Les petis cailloux de verre de l'enfant des rizieres", September 2000, France
Garden Design	June/July 2000
Los Angeles Times Magazine	May 21, 2000
New York Times	May 18, 2000
Honey	"Paradise Found", May 2000
Belle	April 2000, Australia
Bo Bedre	"Et eventyr af glas", April 2000, Denmark
Duzaun	March 2000, Russia
Works + Conversations	"The Garden as Art", Spring 2000
LA Architect	"Splendor in the Glass", March/April 2000
Landscape Architecture	"A Dream Out Loud", December 1999
Southern Housing	"Take It Outside", November 1999, UK
Women's Wear Daily	"Go Geisha", October 28, 1999
W	January, 2000
New Eden	"Glass Gardens A Go-Go", Sept./Oct. 1999, UK

Glue	Sept./Oct. 1999
Travel & Leisure	July 1999
House & Garden	"Recycled Memories", March 1999
Hauser	"Gluck und Glas...", February 1999, Germany
La Repubblica delle Donne	"Giardino di Cristallo", November 1998, Italy
Abitare	"Il Giardino di Vetro", July/August 1998, Italy
Los Angeles Times	"Garden of Glass", February 22, 1998

Books & Catalogs

The Missing Peace: Artists Consider the Dalai Lama	UCLA Fowler Museum
In Search of Paradise: Great Gardens of the World	Penelope Hobhouse
New Frontiers in Modern Gardens	Cornerstone Festival of Gardens
The New Garden Paradise: Great Private Gardens of the World	Dominique Browning & the Editors of House & Garden
Reinventing the Garden	Louisa Jones
Augenweide. Der Garten	Andre Heller, Julia Kospach
Secret Gardens of Hollywood	Erica Lennard
AAR 2002	Fine Arts Fellows Annual Exhibition at the American Academy in Rome, Italy (catalog)
New Tech Garden	Paul Cooper
Mosaiculture & Compagnie	Conservatoire International des Parcs et Jardins et du Paysage, France
New Classic Gardens	Jill Billington
The Garden Book	Phaidon Press
Gardens For the Future	Guy Cooper & Gordon Taylor
Pocket Gardens	James Grayson Trulove
New Garden Design	Conran Octopus

Television

TF1 News	"Festival des Jardins de Chaumont-sur-Loire", French TV, June 2001
----------	--

Slave TO...	Channel 4, April 2000, UK
Secret Gardens of...Los Angeles	HGTV, January 2000
Way To Grow	HGTV, November 1999
Las Vegas, News	China Grill Restaurant, opening of Mandalay Bay Casino, March 2, 1999
Kitty Bartholomew: You're Home	HGTV, November 1998
Interior Motives	Discovery Channel, October 1998
VISITING...With Huell Howser	KCET (PBS), March 1998, (30 minutes)
FOX Network News	"Glass Garden", July 1998
Ooh La La	May 1998, Canada

T . D E L A N E Y

600 ILLINOIS ST • SAN FRANCISCO, CALIFORNIA, 94107 • TEL. (415) 621-9899 FAX. (415) 626-8998 • EMAIL tdelaney@tdelaney.com • LICENSE # 35717

TOPHER DELANEY, ARTIST

T.DELANEY, INC. | SEAM STUDIO
600 ILLINOIS STREET SAN FRANCISCO CA 94107
T: 415.621.9899 F: 415.626.8998 E: topher@tdelaney.com

Education	U.C. Berkeley, Bachelor of Arts in Landscape Architecture 1972 Barnard College, Cultural Anthropology/Philosophy 1967 - 1970
Registration	Landscape Contractor's License, C-27, #357179 1974 Masonry Contractor's License, C-29, #313357 1987
Professional	Principal, T. Delaney/SEAM, San Francisco, CA 1999 - present
Experience	Principal, Delaney, Cochran & Castillo, San Francisco, CA 1972 - 1999

Recent Exhibitions

Feb 2005-Apr 2005	<i>San Jose Art Museum Installation, San Jose, CA</i>
2005-Current	<i>Cornerstone Festival of Gardens, Sonoma, CA</i>
March 2002	<i>DAM Deutsches Architektur Museum, Shadow and Light, Frankfurt, Germany</i>
May - June 2001	Limn Gallery, "Drawing from Experience," San Francisco, CA
Spring 2001	12 Minimalist Gardens, International Exposition, Freising, Germany
Spring 2001	Milan Triennale, Lotus International, Milan, Italy
Nov 1999 - Apr 2000	Here Here Gallery, Invitational Exhibition, Cleveland, OH
January 1997	Metra Gallery, Site Installation, San Francisco, CA
December 1996	Emmie Smock Gallery, One-Person Exhibition, San Francisco, CA
June - Sept 1995	M.H. de Young Museum, Facing Eden, San Francisco, CA
Oct 1993 - Apr 1994	San Jose Museum of Art, Room of Fog, San Jose, CA
June 1992	Corcoran Museum of Art, Landscape as Art, Washington, D.C.
March 1991 Berkeley, CA	U.C. Berkeley Gallery, Whispering Doors - Burning Bushes Site Installation,
June 1990	Cooper-Hewitt Museum, Invitational, New York, NY

Selected Awards

2007 Magazine	California Home & Design Landscape Design, California Home & Design for Grassgreen residence
2005	Design 100, Metropolitan Home Magazine for Avon Comprehensive Breast Center Healing Garden, San Francisco General

Hospital

- 2004 **Recognition of Design Excellence**, the City of Pleasanton
for Bernal Property Professional Design Competition Submittal
- 2003 **Universal Care's Award of Courage**, Universal Care
for work as an advocate and creator of sanctuary gardens for healing against
breast cancer
- 2002-2003 **Western Garden Design Award of Excellence**, Sunset Magazine
for Kuhling-Wilcox Garden, Hurley Garden and Thompson- Brooks Garden,
California
- 2002 **Award for Renovation and Expansion**, 2001 Honor Awards Jury Boston Society
of Architects
for Portland Art Museum Sculpture Garden
- 2001 **Excellence in Concrete**, Oregon Chapter, American Concrete Institute
for Portland Art Museum Sculpture Garden
- 1994 **Movable Landscapes and Site Furnishings Award**, Landscape Architecture
Magazine for Bank of America Corporate Center Roof Renovation

Selected Projects

- 2005 **Isaac Espinoza Memorial Garden**, San Francisco, CA
Located within the parking lot of Bayview Police station this memorial
garden was funded, developed and designed by T. Delaney. This garden is
significantly unique as it is the only sanctuary garden located on the
grounds of a police station within the United States.
- 2004 **USF School of Business**, San Francisco, CA (Public Art Commission)
The plan for Tarantino Plaza, a collaboration of T. Delaney Inc. and Father Tom
Lucas, includes elements that refer to the historical context of business growth
in the Bay Area. Spilling from the lobby and lounge areas into the plaza, an
immense terrazzo world map dominates the space. The sinusoidal projection
map, oriented to the compass, relates the work of SOBAM to the global
community. It is set atop a barcode design that spells "EXCHANGE." Ocean
trade routes linking the Bay Area to the world are also indicated on the map.
The landscaping of the central plaza creates living links to agriculture,
California's premier industry, using traditional flora of Asia (bamboo and
citrus), North America (agave and California poppies), and Europe (fruits
including grape, fig and pomegranate imported to California by Franciscan
Missionaries in the 18th century.) Telescopes mounted at the east end of the
plaza terrace serve as a reminder that tourism is San Francisco's most
important industry, and encourage interaction with the cityscape below. Site
furniture includes cast concrete benches with inset words referring to trade.
Public Art Commission Budget: \$640,000
- 2004 **Avon Comprehensive Breast Center**, SFGH, San Francisco, CA
The natural scents of the citrus, lavender, and magnolias emanating from
this courtyard garden are a floriferous greeting to the community which
this unique facility serves. Why unique? In our current economy it is rare
to offer to those who are uninsured a first class mammography center with
the most current equipment, pleasant public and private spaces, all of
which are focused on an internal medicinal courtyard garden. Windows
surround the courtyard of this facility offering constant opportunities to
see hummingbirds, butterflies, birds dunking in the two bubbling fountains,
and staff and patients sitting in the garden having lunch, resting, and
relaxing. Our studio has enthusiastically taken the civic responsibility to

raise the funds required to design and build this courtyard garden. Situated in the 'banana belt' of San Francisco's Mission district, this garden has been developed as an ornamental medicinal garden. The central paving is a beautiful white Haifa limestone. The three intimated flanking garden rooms are defined by espaliered Meyer lemons and grapes grown to trellises created from antique powder-coated French gates. Ceramic celadon Chinese garden stools, Philippe Stark fiberglass sofas, and an integrally colored concrete bench which holds the central limestone bowl of water offer the visitor a variety of locations from which to view the garden in the sun and the shade. Of particular interest to the staff is the inclusion of mint and citrus that they can harvest for fresh tea. The garden flourishes offering a sanctuary to all those who use this site.

- 2003 **Cascade Apartments, Sacramento, CA.**
Double and single stacked affordable rental apartments with a predominant population of Humong and Vietnamese located on 65th. This installation is comprised of an extensive series of 1600 distinctly colored planters, 6 allotted for each of the 84 units. The plant selections are chosen by each tenant offering a unique collaborative design. The driveways and parking are all lined with metal agricultural planters planted with citrus, guava, herbs and seasonal vegetables.
- 2003 **Club Quarters Hotel, San Francisco, CA. (Public Art Commission)**
Copper Façade Sculpture: Etched in copper panels reminiscent of the copper sheathing that encased the General Harrison's hull are expanded lines which illustrate the ship's form. These copper panels are embedded vertically on the hotel's façade, telling the story of the boat that has been buried beneath this site since 1849.
Sidewalk: This city sidewalk represents an interpretive horizontal tableau of the "history of buried treasure" beneath the site of the Club Quarters Hotel. A line of red terrazzo forms the 'ghost outline' of the General Harrison's shape, as documented in the photographs and drawings created during the archeological excavation. This sinuous line defines the threshold between the interior planking and the exterior layer of artifacts embedded in the sidewalk; hotel guests and employees literally enter into the "vessel" of the hotel, which sits directly upon the buried hull of the General Harrison. The interior of the General Harrison is a metaphor for the interior of the hotel as a vessel, a form in which weary travelers can rest and rejuvenate
Total budget for public art: \$200,000, Sidewalk installation: \$85,000
- 2002 **Marin Central Plaza, Larkspur, CA.**
The renovation of the center reflects its site and purpose through the plantings and site furnishings. In keeping with our commitment to recycling, we developed a vocabulary of "green" materials and iconic forms which reference the act of shopping—the entire Boardwalk of recycled plastic is in bar code language (Code 39) spelling out the slogan "We love to shop." Fiberglass plantings cast in the shape of shopping bags appear so realistic that many people have to do the touch test—the bags are planted with fifteen varieties of citrus, edible herbs and annuals such as pansies, yellow chard, and calendulas. Whimsical topiaries and sculptural art pieces define transitions such as the handicap ramps, where stainless steel orbs have curving rails that arc similar in pattern to the tailings of shooting stars. They land in geologic "meteors" which have come to rest mysteriously at Marin Central Plaza.
- 2001 **Marriott Corporation, San Francisco, CA. (Public Art Commission)**
Public Artist, 1% for art. The hotel lobby installation showcases comfort with two 7' x 14' hanging quilts composed of 1000 personal ties of Marriott employees and dozens of scarves. Sixteen 4' x 6' framed colored

photographs document distinct architectural elements of this unique urban environment. In addition, the "History of Luggage" is comprised of twenty cast bronze pieces which reference elements associated with travel - suitcases, umbrellas, hats, sunglasses, cameras, golf bags, shoes, gloves, and laptops. These "lifelike" elements are positioned throughout the ground floor and are also used as seats.

Total Budget for public art: \$400,000, Two quilts: \$60,000

- 2001 **Marriott Corporation, Emeryville, CA. (Public Art Commission)**
Public Artist, 1% for art. Inset into the existing patios are these 10' x 10' squares of glass tile mosaics which reflect the indigenous species that once abundantly populated the California shores. This style of depiction reflects the style of mosaics which were discovered in Pompeii. Images are revealed of a lost civilization- the visual presence of absence.
- 2000 **Portland Art Museum, Portland, OR.**
This project exemplifies the opportunity to transform 7,000 square feet of elevated roof terraces and 8,000 square feet of a grade plaza into a dynamic series of distinct public sculpture gardens. Graphic striped paving incorporates an ingenious series of moveable sculptural plinths, video screen, and tracking metal panels to reconfigure outdoor rooms. The seating is woven into the fabric of the walls and the plinths' recessed lighting defines the sandblasted glass walls.
- 1999 **Beth Israel Hospital, New York, NY.**
Created in conjunction with the innovative hospital unit, "The Inn" is a unique retreat for children who are in the process of recovery from neurological disorders. This rooftop garden is for restitution and spiritual revival. The design of the garden is "A Safe Harbor," inspired by the context of this dramatic site. The ground surface is an undulating vibrantly colored mosaic made from resilient rubber created by Saf-Dek. Swimming through the blue tones of this mosaic are fish, octopuses, and trout, and a "Where's Waldo?" adventure of discovery. A water table in the shape of Manhattan, a card shark table for playing cards and an octopus table with inset sand trays for re-learning manual dexterity extend from the existing brick facade. A parapet fence of the thirteen bridges of Manhattan drawn in lines of steel celebrates the myriad of connections implicit in the passage of the bridge. Visitors cross over the bridge to health and to rest in a safe harbor, the Jonathan Parker Abramson garden.
- 1997 **San Diego Children's Hospital, San Diego, CA.**
A garden created for significantly diminished children, their families and staff, celebrating the transformative power of our imagination. Two 30' topiary dinosaurs lean their long green necks over the walls of cascading bougainvillea, beckoning children to come visit. Inside, a river of fog spews across a stone amphitheater; seats shaped in the form of starfish, mermaids, and nautilus lie next to a nature sanctuary where one may pot and plant, feed birds and count butterflies. One may tell stories in shadow rooms, or contemplate a journey in a garden of beneficent and bountiful flowers. This garden offers parents a sanctuary to bring their children to pass on. The mission of this facility is to create a harmonious exterior environment where families, friends, and staff can process this difficult transformation.
- 1994 **Bank of America Roof Garden, San Francisco, CA.**
37,000 square foot colored concrete roof garden dotted with fifty-seven colorful windsocks that act as a response to the wind that constantly buffets this 9th floor plaza. Like a flock of brightly plumed migrating birds, the windsocks turn and twist in unison. The garden expresses the philosophy of an integrated narrative and describes, in a physical context, the unique attributes of the site and client. A full-scale sundial provides a

stimulating surface on which to partake of a meal or a conversation - a traditional and functional object is transformed into an opportunity for knowledge: where exactly are we placed in the universe? The sundial expresses the dynamic continuum of time, as curved benches of recycled yellow plastic arc as latitudes through giant topiary spheres of ivy.

1992 120 / 180 Howard Street, San Francisco, CA. (Public Art Commission)
Sculptural installation of sculptural forms of colored concrete and site innovated furniture.

Recent Lectures

July 2006 The Garden Conservation, Walnut Creek, CA
May 2006 Junior League of San Francisco, San Francisco, CA
Spring 2006 FROMM Institute, San Francisco, CA
April 2006 Marin Master Gardeners, Ross, CA
March 2006 Colorado State University, Fort Collins, CO
February 2006 Wave Hill Lecture Series, New York, NY
February 2006 Clodagh, New York, NY
November 2005 University of Victoria, Victoria, Canada
August 2005 New Milford Hospital Foundation, New Milford, CT
June 2005 Hospice of Marin, Larkspur, CA
April 2005 Inner Gardens and Garden Design Magazine Lecture Series Lecture, Los Angeles, CA
April 2005 Spence School, New York, NY
April 2005 Garden Education Center of Greenwich, Cos Cob, CT
January 2005 Hearst Lecture Series, California Polytechnic State University, San Luis Obispo, CA
November 2004 Vancouver Architecture League Lecture Series, Vancouver B.C.

Recent Periodicals

October 2006 San Francisco Chronicle, "The Mexican Garden Revisited," p. F1, F7.
Summer 2006 Women & Cancer, "Planting Seeds of Health and Hope," pp.76-80.
July/August 2006 Western Interiors and Design, "Green Narratives," pp. 61-67.
May 2006 California Home + Design, "Palace of Refined Arts," pp. 120-129.
May 2006 Town & Country, "Cool Pools," p. 72.
April 2006 Garden Design, "True Blue," pp. 36-38.
April 2006 Food & Wine, "Art Park," p. 36.
November 2005 Sunset Magazine, "Walls that rock," p. 54.
October 2005 Garden Design, Monrovia Style advertisement, pp.1-2.
October 2005 Metropolitan Home, "In the Pink," pp.152-155.
Summer 2005 Sunset Magazine: Decorative Concrete, Paths and Patios, p. 99.
July 2005 California Home + Design, "Curb Appeal," pp. 116-117.
May 2005 7 x 7 San Francisco Magazine, "Balancing Acts, the Contemplative," p. 99.
May 2005 POA Journal, "Isaac's Garden," p. 14-15, vol.37, number 5.
May 2005 Metropolitan Home, "Design 100 2005," p.68.
April 2005 House & Garden, "Field Trip in the Garden," pp.76-77.

Monograph Delaney, Topher, Ten L

Jeffrey Reed

1014 Curtis St., Albany, Ca 94706
510.384.0804
Reed@ReedMadden.com

Education

- 1984-1985 **University of Copenhagen, International Study Program,**
Cal. Poly. State University's fifth-year elective in
Architecture
- 1980-1984 **California Polytechnic State University, San Luis Obispo**
Five year Bachelor of Architecture Degree

Professional Experience

- 1997 - **Designer / Partner** Reed Madden Designs, Albany, CA
Present Design public and private art commissions, custom fountains and furniture. Fountaintable™ sculptures featured in galleries throughout California.
- 1993 - 2004 **Artist / Builder / Owner** Reed Studio, Oakland, CA License #678010. Design/build commissions for public and private sculpture. Philosophy: to create and promote awareness of the poetics of our natural environment while living in an era of technology.
- 1987-1993 **Architectural Design / Construction Supervision**
Rammed Earthworks Inc., Napa, Ca.
Architectural design and supervision/training of construction staff for pioneering earth-building firm.
- 1986-1987 **Intern Architect**, Architectural Lighting Design, San Francisco
Worked with architects on diverse lighting design projects.
- Summers **Design, Planning & Construction**
1979-1985 Worked in a variety of public and private work environments, developed architectural and construction skills.

Art in Public Places, and other Municipal and Corporate Commissions

- 2007 **Public Art Commission**
Seal Point Park, San Mateo, California. (In Process.)
Five kinetic sculptures for the Bay front park \$200,000
- 2006 **City of Tiburon Commission,**
"Coming About", 15'h x 28'w Kinetic Fountain Sculpture \$309,000
- 2004 **San Francisco Botanical Garden and Strybing Arboretum**
Golden Gate Park, Australian Garden, Sculpture and outdoor classroom
- 2002 **Public Art Commission**
City of Palo Alto, "Sun's Flowers" sculptural streetscape and dining court

- 1999 **Municipal Commission**
Golden Gate National Parks Association
Design Presidio Promenade sculptural seating
- 1998 **Art in Public Places Commission, supporting artist,**
San Jose AIPP, S. Beran's "Tree of Life" Sculpture
- 1997 **Municipal Commission**
City of Danville, Hap Magee Ranch Park, Drive-through Entry
Gateway
- 1997 **Corporate Commission**
California State Auto Association, Entry plaza and dining court
- 1996 **Municipal Commission**
Dorothy Ellenburg Memorial Park, Sculpture and signage
- 1994 **Art in Public Places Commission**
Sacramento Metropolitan Arts Commission, Cavanaugh Golf
Course
- 1993 **Art in Public Places Commission**
City of Davis, California, Fountains with integral seating for Central
Park

Selected Exhibitions, Awards, Projects and Lectures

- 2003 **AIA San Francisco – Urban Design Honor Award** "Best of the Bay"
(For *Sun Flowers*' transformation of a 10'-wide sidewalk strip into a
well-used
public seating and dining area for both day and night.)
AIA San Francisco – Green Design Honor Award "Best of the Bay"
(For *Sun Flowers*' use of solar power, wind, water retention, recycled
materials and educational components.)
- 2003 **"Water's Edge" Water-wall**, Belvedere, Ca.
Privately commissioned fountain sculpture
- 1997-2003 **U.C. Davis**, Guest Lecturer/Juror, Landscape Architecture Dept.
- 1998 **San Francisco Landscape Garden Show**, Reed Madden Designs
debuts first "Fountaintable," receives 3 awards for sculpture garden
including a landscape design award from American Society of
Landscape Architects.
- 1997 **"Material Matters"** Laidley Garden, Oakland, Ca
Privately commissioned Sculpture Garden
- 1996 **Moon Garden**, San Francisco, Ca.
Privately commissioned Sculpture Garden
- 1996 **The Rammed Earth House**, by David Easton
Architecture and text illustration
- 1995 **Hollis Street Project**, Emeryville, Ca.
First show of "Signs of Life" sculptures
- 1995 **Philosopher's Garden**, Kenwood, Ca.
Privately commissioned Sculpture Garden
- 1994 **La Quinta Sculpture Park**, La Quinta, Ca.
Stabilized earth wind sculpture
- 1994 **Sister City Project**, Leon, Nicaragua
Architecture and team management for community school
project
- 1993 **Lightscapes at LIMN**, San Francisco, California
Invitational exhibit of Bay Area light artists

- 1992 **National Compact House Competition, 2nd Place**
Director of team, Rammed Earth Works, Napa, Ca., Book published, 1992
- 1992 **AIA Sustainable Architecture Ideas & Community Solutions**
Pictorial essays of the lineage of modern earthen architecture
- 1991 **Life Through Time**, Academy of Sciences, San Francisco
Large-scale tapestries of rammed earth depicting our geological history
- 1991 **Dryland Lecture Series, Speaker**
Lecture on earth building in the dryland environment, Las Vegas, NV
- 1991 **Dwelling on Earth**, by David Easton
Book illustrator and chapter author of professional earth builders' manual
- 1990 **SoCo Gallery**, Napa, California
Exhibit of environmental sculpture & lighting
- 1986 **International Association of Lighting Designers**
Awarded internship at Architectural Lighting Design, San Francisco,

Featured Articles

- 2004 **Sunset Magazine** "Art House: A husband-and-wife team turns their home into a design lab," by Peter Whiteley, April 2004.
- 2003 **San Jose Mercury News** "Public artwork in P.A. taps into state's mythology," by Alan Hess, August 3, 2003. ("Sun Flowers" public art)
Palo Alto Weekly "Sun Flowers' Blossom in Palo Alto," by Gerald Brett March 21, 2003, pp. 11 (*Sun Flowers public art sculpture*)
San Francisco Chronicle Home & Garden, "The Avant Garden," by Leslie Crawford, March 19, 2003 (*Fountaintable™ design*)
- 1999 **Contra Costa Times** Home & Garden (front page), by Tam Putnam, January 1, 1999 (*Laidley Sculpture Garden*)
- 1997 **Sunset Western Landscaping** Sunset Books Inc., Menlo Park, CA pp. 136-137,263 (*Rammed Earth Wall , Kenwood Sculpture Garden*)
- 1994 **Davis Enterprise** Art in Public Places, Central Park, Davis July 17,
- 1994
- 1993 **Sunset Magazine** 95th Anniversary Issue, "Old look, new technique," by Peter Whiteley, May 1993, pp.116. (Rammed earth wall and barbecue)
- 1993 **Better Homes & Gardens** "Rammed Earth" by Larry Erickson, May pp.89-92
- 1992 **San Diego Union Tribune**, Home Section, "Earth, Sun & Architecture: Home Rises Literally from the Desert Floor," by Marsha Kay Seff, June 28, 1992.

Jennifer Madden

1014 Curtis Street, Albany, California 94706

Tel/Fax 510.528.7122

www.reedmadden.com

madden@reedmadden.com

Education

- 1993 **University of California, Berkeley**
MLA Masters of Landscape Architecture
- 1982 **University of California, Santa Cruz**
BA Art History
- 1980-1981 **University of Saint Andrews, Scotland**
U.C. Education Abroad Program

Professional Experience

- 1997 - Present **Designer / Partner** Reed Madden Designs, Oakland, CA
Design public and private sculptural art commissions, architecture, gardens, custom fountains and furniture. Reed and Madden's Fountaintable™ sculptures are featured in galleries throughout California.
- 1994- 2003 **Lecturer** Univ. of California at Davis, Dept. of Environmental Design Landscape Architecture:
LDA 191: The Asphalt Garden: Form Follows Parking, 2003
LDA 191: Beyond Function: Designing with Personality Theory, 1999, 2000, 2002
LDA 70: Basic Landscape Design Studio, 2000, 2001, 2002, 2003
LDA 21: Landscape Graphic Communication, 1995 - 2003
LDA 11: Landscape Architecture Studio: Introduction, 1996, 1997
LDA 121: Advanced Graphics in Landscape Architecture, 1994
- 1994 - 1997 **Landscape Designer** Jennifer Madden and Associates, Albany, CA
- 1993-1994 **Planner** Community Development by Design (Hester-McNally), Berkeley, CA
- 1991- 1993 **Graduate Student Instructor**, Chip Sullivan, Univ. of California, Berkeley
ED 104: Site Planning, 1993
LA 101: Introduction to Landscape Design, 1991 and 1992
- 1992 **Research Assistant** Professor Chip Sullivan, U.C. Berkeley
Researcher and editor for Sullivan's book: *Climate and Gardens*
- 1991 **Research Assistant** Professor Randolph Hester, U.C. Berkeley
Lead project designer for the Earnest Memorial Arboretum in the Jackson Demonstration State Forest, California Dept. of Forestry.
- 1985-1989 **Administrator/Technical Reports Editor**, Univ. of California, Santa Cruz
Dept. of Computer Science. Creator of Computer Science Library;

1977 Editor of technical report papers by faculty for publication.
Research Assistant Professor Amos Nur, Dept. of Geophysics,
Stanford (Summer) Research and graph stress properties of rocks.

Publications

2001 **"A Language of Design Using Personality Theory"**
Proceedings from the 3rd Symposium on Systems Research in the
Arts.
Baden-Baden, Germany. August 1-4.

1993 **"Cohousing: The American Pioneers"** Masters Thesis
University of California, Berkeley

1992 **"Color Cards Improve Group Process"**
Cohousing Newsletter. Berkeley, CA Fall.

Featured Articles

2004 **Sunset Magazine**, "Art House: A husband-and-wife team turns their
home into a design lab" by Peter Whiteley, April 2004, pp.140-145.

2003 **San Jose Mercury News**, "Public artwork in P.A. taps into state's
mythology" by Alan Hess, August 3, 2003. (*Sun Flowers* public art
sculpture.)
Palo Alto Weekly, "Sun Flowers Blossom in Palo Alto" by Gerald
Brett
March 21, 2003, pp. 11 (*Sun Flowers* public art sculpture.)
San Francisco Chronicle, Home & Garden, "The Avant Garden,"
by Leslie Crawford, March 19, 2003 (*Fountaintable™* design)

1999 **Contra Costa Times**, Home & Garden (front page),
"Man-made elements add form to the flora, and garden color
year-round" by Tam Putnam, January 1, 1999 (*Laidley Sculpture
Garden*)

Public Art Commissions by Reed Madden Designs

2007 **Public Art Commission**
Seal Point Park, San Mateo, California. (In Process.)
Five kinetic sculptures for the Bay front park \$200,000

2006 **Public Art Commission**,
City of Tiburon, CA "Coming About", 14'h x 28'w
Kinetic Fountain Sculpture \$300,000
Commissioned for the redesign of the downtown plaza.

2004 **Municipal Commission**
San Francisco Botanical Garden – Strybing Arboretum
Sculptural outdoor seating area, walls, creek and memorial bench

2002 **Art in Public Places Commission**
City of Palo Alto, "Sun's Flowers" sculptural streetscape and dining

- court
- 2000 **Art in Public Places, Runner-up**
City of Sacramento, Intake Plaza
- 1999 **Municipal Commission**
Golden Gate National Parks Association
Design studies and mock-ups of Presidio Promenade sculptural seating
- 1998 **Art in Public Places Commission**, supporting artists,
San Jose AIPP, S. Beran's "Tree of Life" Sculpture
- 1997 **Municipal Commission**
City of Danville, Hap Magee Ranch Park, Drive-through Entry Gateway

Profession Services & Volunteer Work

- 2006 **Plaza Redesign Consultant**, Tiburon, California. Create seating designs, recommend tree species and plaza resurfacing treatments.
- 1995-1998 **Site Development Committee**, Berkeley Montessori School, Berkeley, CA
Research potential site acquisitions, interview architects for programming, summarize financial analysis for bank loans, create preliminary construction budget and timetable.
- 1996-1998 **Site Improvement Committee**, Berkeley Montessori School, Berkeley, CA
Create landscape design plans for preschool.
- 1997 & 1994 **Book Reviewer**, *Drawing the Landscape*, by Chip Sullivan; both original manuscript and revised edition by Chip Sullivan, Van Nostrand Reinhold, NY.
- 1996 **Portfolio Review Committee**, Univ. of California, Davis
Dept. of Landscape Architecture. Review student applications for program.
- 1994 **Selected Juror**, San Francisco Garden Club -- Student Design Awards, Univ. of California at Berkeley, Dept. of Landscape Architecture, Spring.
- 1990-present **Invited Guest Juror** for dozens of design studios at both UCB & UCD.

Academic and Professional Honors

- 2004 **American Institute of Architects - Urban Design Honor Award**
Northern California Chapter "Best of Bay"
(For *Sun Flowers*' transformation of a 10'-wide sidewalk strip into a well-used public seating and dining area for both day and night.)
American Institute of Architects - Green Design Honor Award
Northern California Chapter "Best of Bay"
(For *Sun Flowers*' use of solar power, wind, water retention, and recycled materials and educational components.)
- 2002 **Univ. of California, Davis, Undergraduate Instructional Improvement Grant**
For creating a new course: "The Asphalt Garden: Form Follows Function"
- 1999 **Univ. of California, Davis, Undergraduate Instructional**

Improvement Grant

For creating a new course: "Beyond Function: Form Follows Personality"

1998

American Society of Landscape Architects – Design Award

ASLA - Northern California Chapter

For Reed-Madden's garden design "Who's Invited for Drinks at the California Watertable" San Francisco Landscape Garden Show, March.

San Francisco Landscape Garden Show - Water Smart Award

Reed Madden Designs debuts first "Fountaintable™" with drought-tolerant plants around a "cracked earth" table with recycled central water feature.

San Francisco Landscape Garden Show - Mediterranean Design Award

1995 **Group Furniture Exhibition**

Univ. of California, Berkeley, College of Environmental Design

Wurster Hall Design Gallery. Spring

1992 **Group Furniture Exhibition**

Univ. of California, Berkeley, College of Environmental Design

Wurster Hall Design Gallery. Fall

1991 **Univ. of California, Berkeley, Farrand Research Grant**

For thesis research on "Cohousing: The American Pioneers"

Invited Speaking Engagements

2003

Design Alliance, Davis, California. "Form Follows Personality" February. City Arts Center. (Honorary)

2002

Dept. of Environmental Design, Univ. of California at Davis Fall Luncheon Lecture Series. "Preferences in Design"

2001

Symposium on Systems Research in the Arts. Baden-Baden, Germany

"A Language of Design Using Personality Theory" August

2000

Univ. of California, Berkeley. Dept. of Landscape Architecture

Luncheon Lecture Series: "Reed Madden Designs: Recent Work"

1994

Cohousing Conference, Kerr Hall, U.C. Berkeley

"Issues in Recruitment" November.

1992 & 1991

Univ. of California, Berkeley. Landscape Architecture Dept.

LA140: Social Factors in Design. "Designing for Community"

Gallery Representatives

A New Leaf Gallery, Berkeley, Ca

Nofuffi Gallery, Encinitas, Ca

Mill Valley Sculpture Garden, Mill Valley, Ca

Sculpture Site Gallery, San Francisco and Sonoma, Ca

William Zimmer Gallery, Mendocino, Ca.



SACRAMENTO METROPOLITAN ARTS COMMISSION

A City County Agency

May 2, 2007

**Honorable Chair and
Members of the Art in Public Places Committee**

Title: Approval of Arts Plan for Oak Park Community Center. (City)

Location/Council District: 3425 Martin Luther King Jr., Blvd. District 5

Recommendation: APP staff recommends approval of the arts plan for Oak Park Community Center Project.

Contact: Linda Bloom, Administrator for Art in Public Places (APP) (916) 566-3971, Diana Walker-Smith, APP Project Consultant, (916) 566-3992.

Description/Analysis

Issue: This is the second phase of the project consisting of the construction of a new gymnasium as part of the Oak Park Community Center in the City of Sacramento. The building consists of a one-story project located in a complex of other Oak Park facilities (Site Plan Attachment 2). The gymnasium will include a stage, small office, storage, bathroom facilities, and an entrance lobby.

The areas designated for public artwork include: 1) exterior of the building /fencing treatment, and 2) the courtyard between the new gymnasium and the existing facility. The Arts Plan was developed through meetings with the Division Manager for Children and Family Recreation, Dave Mitchell and Senior Architect, project manager from General Services, Yadi Kavakebi. Architect for the project is Dahlin Group from Pleasanton, California. Due to fast-track nature of the project, staff and consultant recommend an invitational art selection process with a local artist/team.

In addition, SMAC's APP program (staff and Committee) have been discussing the concept of a mentoring opportunity for emerging artists and, in particular, teaching studio-based and two-dimensional artists the necessary skills to become public artists. Staff and consultant feel that this project lends itself to the mentoring concept. A lead artist would be asked to mentor an individual or team of local artists to create public artwork for the project.

2030 Del Paso Boulevard
Sacramento, California 95815-3022

Phone (916) 566-3992
Fax (916) 566-3996
www.sacculture.com
www.artcap.org

Three mentoring artists are recommended due to their experience in public art- Donna Billick (sculpture, mosaic and terrazzo) Larry Meeks (metal) Troy Corliss (sculpture, terrazzo.) Dependent upon availability, one of these artists will be paid \$5,000 to teach and direct an individual or team of Sacramento County emerging public artists through all of the elements of design, fabrication and installation of artwork. (The other two artists will be considered for future mentoring opportunities.) Serving as a mentor will not preclude an artist from application to other APP projects for which the artist is eligible.

The mentored artist/team will be selected from Sacramento County artists who have not received commissions from APP and have applied through our RFQ's within the last two years. A sub-Committee of the APP Committee and arts professionals will review previous application materials in APP's files and recommend three emerging artists for the project. APP staff will facilitate an interview panel with the three artists and one will be recommended for the mentoring project. Staff and consultant will work closely with both mentor and mentees and recommend fabricators and installers. Construction is estimated for completion by December of 2007.

Policy Considerations: City ordinance requires that 2% of construction projects be set aside for public artwork. The selection of artists by invitation meets with APP Standard Policies and procedures and the goal of site-specific public art.

Commission/Committee Action: APP Committee will review the proposed arts plan at its meeting on May 2, 2007.

Environmental Considerations: The artists will provide engineering drawings and installation details to comply with all applicable codes, CEQA Guidelines 15301 and work within the parameters established by the City Department of General Services. APP staff and the artists will be required to attend planning, review, and coordination meetings with City project teams and will mitigate any safety, durability, and maintenance concerns.

Rationale for Recommendation: APP staff met with Dave Mitchell, Division Manager, Children and Family Recreation and Yadi Kavakebi, Senior Architect in regard to Phase 2 – Oak Park Community Center on January 25, 2007. It was agreed that to expedite the APP process, an invitational process would best meet the needs and desires of both the City and the Oak Park community.

Financial Considerations:

Based on 2% of construction costs, \$77,875 is available for artwork and administrative costs for the projects. Oak Park Gymnasium is a \$3.9 million dollar construction project.

- \$11,682 - APP administrative costs including Project Manager Consultant
- \$ 1,193 - Maintenance
- \$65,000 - Artwork and proposals (including \$5,000 mentor fee)

Emerging Small Business Development (ESBD): APP will make every effort to register eligible artists and vendors for the ESBD program.

Respectfully submitted by, _____

Linda Bloom
Art in Public Places Administrator

Diana Walker-Smith
Art in Public Places Project Consultant

Table of Contents:

	Pg	1-3	Report
Attachments			
1	Pg	4	Budget
2	Pg	5	Site plan

ATTACHMENT 1

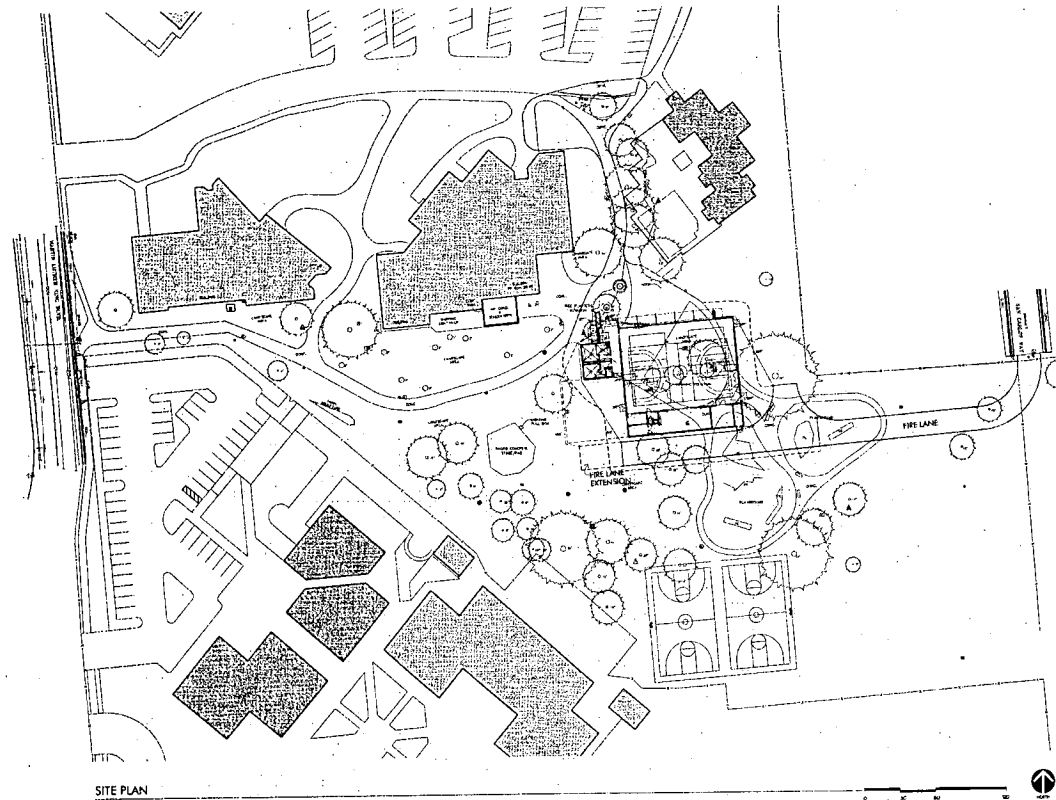
Budget for Oak Park Community Center Public Art Project

\$11,682 - APP admin. including consultant
\$ 5,000 - Mentorship Contract
\$ 1,193- Maintenance
\$60,000 - Artwork, proposals

\$77,875 Total Available

Artwork Opportunities	Budget	Residency
1. exterior	\$30,000-	County
2. joint courtyard	\$30,000-	County
TOTAL		\$60,000-

ATTACHMENT 2
Site Plan



DAHLIN GROUP
2401 Lincoln Blvd.
Sacramento, CA 95833
TEL: 916.486.1000
FAX: 916.486.1001

OAK PARK
COMMUNITY CENTER
PHASE II
1400TH STREET & 14TH AVE
SACRAMENTO, CA

FIRE LANE - 4251.7'
FIRE LANE WITH EXTENSION - 4753.1'

REVISIONS	
NO.	DESCRIPTION

JOB NO. 080208 SHEET
DRAWN BY 101
CHECK BY 101 **A1.1**
DATE 08-01-07 OF

SITE PLAN



SACRAMENTO METROPOLITAN ARTS COMMISSION

A City County Agency

May 2, 2007

**Honorable Chair and
Members of the Art in Public Places Committee**

Title: Approval of Arts Plan for North Natomas (CIP QA38), Valley Hi– North Laguna (CIP QA37), and Pocket Libraries (CIP QA03) (City).

Location/Council District: City Districts 1, 7, and 8.

Recommendation: Staff recommends approval of the arts plan for new City Libraries at North Natomas, Valley Hi–North Laguna, and the Pocket.

Contact: Linda Bloom, Administrator for Art in Public Places (APP) 566-3971, Cari LaZansky, APP Assistant 566-3977

Description/Analysis:

Issue: Three new libraries are being constructed for the City of Sacramento. There are budgets of \$169,600, \$143, 641, and \$162,855 available for public artwork for the North Natomas, Valley Hi, and Pocket libraries, respectively. APP staff is recommending dividing the total budgets for each library project into smaller commission amounts of \$50,000 or less in order to provide multiple artist opportunities and expedite the artist selection process using APP's Public Art Resource Registry (PARR). This registry includes about 45 pre-qualified artists, both emerging and experienced from the eleven contiguous counties to Sacramento.

Policy Considerations: This arts plan, including the 2% for APP budget based on the City's ordinance # 4274 for capitol improvement projects, follows the Standard Polices and Procedures of the Art in Public Places program.

Commission/Committee Action: The APP Committee will review the arts plan and recommend action at its regularly scheduled meeting on May 2, 2007.

Environmental Considerations: The selected artwork and installation will comply with all applicable codes, CEQA Guidelines 15301. The work will be executed within the parameters established by the City of Sacramento Library Authority and Department of General Services. APP staff and the artists will be required to attend planning, review and coordination meetings with the City project team and will mitigate any safety, durability and maintenance concerns.

2030 Del Paso Boulevard
Sacramento, California 95815-3022

Phone (916) 566-3992
Fax (916) 566-3996
www.sacculture.com
www.artcap.org

Rationale for Recommendation: Expediting the artist selection process by using APP's Public Art Resource Registry (PARR) will provide 1) individual commission amounts of less than \$50,000 which will allow for more artists to have opportunities by providing several commissions per project. 2) PARR provides opportunities for first-time emerging public artists and studio artists to have their work considered for public art projects 3) more opportunities for integrated artwork by allowing artists to work with City staff and project architects early in the planning and design phases. APP will contract directly with installation specialists and /or use the project on site- contractors.

Financial Considerations:

North Natomas Library:

APP project budget:	\$	212,000.00
APP administrative fee:	\$	40,280.00
APP artwork maintenance fund:	\$	2,120.00
Artwork budget:	\$	169,600.00

Valley Hi-North Laguna Library

APP project budget:	\$	179,552.00
APP administrative fee:	\$	34,114.80
APP artwork maintenance fund:	\$	1,795.60
Artwork budget:	\$	143,641.60

Pocket Library

APP project budget:	\$	203,569.00
APP administrative fee:	\$	38,678.00
APP artwork maintenance fund:	\$	2,035.80
Artwork budget:	\$	162,855.20

Emerging Small Business Development (ESBD): APP will make every effort to register eligible artists and vendors for the ESBD program.

Respectfully Submitted by: _____
Linda Bloom
Art in Public Places Administrator

Table of Contents:

	Pg	1-2	Report
Attachments			
1	Pg	3-4	Background
2	Pg	5-8	Site Plans

Attachment 1

North Natomas and Valley Hi-North Laguna Libraries

Background Information

APP, library, and City project staff met to discuss possible artwork opportunities and estimated budgets for these opportunities for both library projects.

The following opportunities were discussed:

North Natomas Library

- 1) \$50,000 exterior monument sign in front plaza area (plus \$15,000 for contractor installation)
- 2) \$50,000 interior artwork near children's area and glass block wall.
- 3) \$50,000 interior artwork in two restrooms.
- 4) \$4,000 proposals/contingency..

Artwork budget: \$169,600.

Design phase scheduled now through June 15, 2007. Construction scheduled from February 15, 2008- June 2009. Project architect: Brian Maytum, Nacht and Lewis.

Valley Hi-North Laguna Library

1. \$50,000 (plus \$10,000 installation costs) exterior artwork at plaza or monument sign
2. \$40,000 interior artwork (location TBD)
3. \$40,000 interior artwork (location TBD)

Proposals/Contingency: \$3,641.60

Artwork budget: \$143,641.60.

Design phase scheduled now through June 2008. Construction scheduled from April 2008-April 2009. Project architect: Jeff Day, Noll and Tam Architects and Planners.

Pocket Library

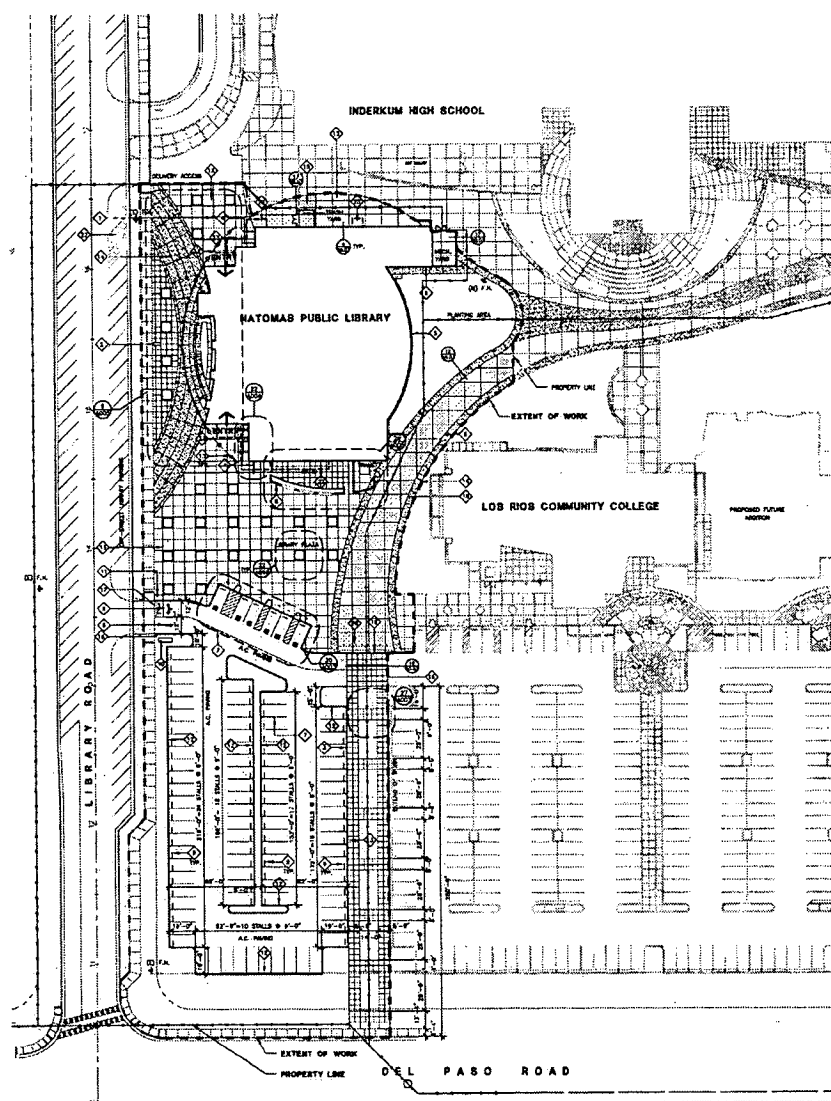
1. \$50,000 (plus \$10,000 installation costs) exterior artwork at plaza or monument sign
2. \$50,000 interior artwork (location TBD)
3. \$50,000 interior artwork (location TBD)

Proposals/Contingency: \$2,855.20

Artwork budget: \$ 162,855.20.

Design phase scheduled now through June 2008. Construction scheduled from July 2008-June 2009. Project architect: Max Medina, WLC Architects.

Attachment 2 North Natomas Site Plan



KEYNOTES:

THESE SHEET NOTES ARE APPLICABLE TO THIS SHEET ONLY

- ◇ RAIN PILE - SEE DETAIL
- ◇ NON MONUMENT, SEE "NON MONUMENT LUMP SUM" BELOW
- ◇ CONCRETE CURB AND CONCRETE WALK - SEE DETAIL
- ◇ RETICULE MARK - SEE SPECIFICATION SECTION 10000
- ◇ JOE SIGN - SEE DETAIL
- ◇ TRAFFIC SIGN - SEE DETAIL
- ◇ STAMPING, 2" HIGH, SEE SPECIFICATION
- ◇ PIPE CUM WALL, SEE DETAIL
- ◇ PRECAST CONCRETE WALK STOP-UP
- ◇ (S) THE WATER BACKUP PREVENTER-SEE DETAIL
- ◇ "STOP" SIGN PER CITY STANDARDS, FOR FOOTING SEE DETAIL
- ◇ CONCRETE CURB-SEE DETAIL
- ◇ CONCRETE FINISH
- ◇ CONCRETE FINISH, EXTERIOR TO DRIVE
- ◇ CONCRETE FINISH, TRAFFIC AREA
- ◇ ACCESSIBLE PARKING DRIVE SIDE - SEE DETAIL
- ◇ WHITE PAINTED STOP & CROSSWALK MARKING, PER CITY STANDARD
- ◇ HOT LIDS
- ◇ ROLLER CURB, PER CITY STANDARD
- ◇ CURB TO REMAIN, 4" PORTLAND CEMENT CONCRETE, 1" MIN. 1/2" O.C. 2" O.C. 1/2" O.C. WITH STEEL REIN. MINIMUM 6' LONGER THAN 6' WALKWAY
- ◇ TRAFFIC SIGN, SEE DETAIL
- ◇ 10' PARKING SPACES FOR 3 HOUR DROP-OFF
- ◇ METAL CURB, SEE FLOOR PLAN

LEGEND:

THESE SHEET NOTES ARE APPLICABLE TO THIS SHEET ONLY

- EXTERIOR USE EXTERIOR CONCRETE
1" PORTLAND CEMENT CONCRETE WITH REIN. SEE FINISH AND REINFORCEMENT SCHEDULE
- COLORED EXTERIOR USE EXTERIOR CONCRETE
1" PORTLAND CEMENT CONCRETE WITH REIN. SEE FINISH AND REINFORCEMENT SCHEDULE
- TRAFFIC AREA EXTERIOR USE EXTERIOR CONCRETE
1" PORTLAND CEMENT CONCRETE WITH REIN. SEE FINISH AND REINFORCEMENT SCHEDULE
- JOINTS IN CONCRETE FINISH
JOINTS TO BE "TYPICAL JOINTS" UNLESS OTHERWISE NOTED. JOINTS TO BE 12" O.C. MIN. UNLESS OTHERWISE NOTED. JOINTS TO BE 12" O.C. MIN. UNLESS OTHERWISE NOTED. JOINTS TO BE 12" O.C. MIN. UNLESS OTHERWISE NOTED.

SITE FINISH SCHEDULE:

THESE SHEET NOTES ARE APPLICABLE TO THIS SHEET ONLY

- 1. METAL CURB - SEE DETAIL
- 2. PRECAST CONCRETE WALK STOP-UP
- 3. TRAFFIC SIGN - SEE DETAIL
- 4. JOINTS IN CONCRETE FINISH - SEE DETAIL
- 5. CONCRETE CURB - SEE DETAIL
- 6. CONCRETE CURB - SEE DETAIL
- 7. CONCRETE CURB - SEE DETAIL
- 8. CONCRETE CURB - SEE DETAIL
- 9. CONCRETE CURB - SEE DETAIL
- 10. CONCRETE CURB - SEE DETAIL

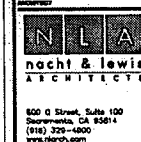
SIGN MONUMENT - LUMP SUM

1. INCLUDE THREE MONUMENT SIGN MONUMENT WITH TWO LIGHTS "LUMPSUM" WITH "TYPICAL" SIGNMONUMENT AND SIGN MONUMENT TO BE BY ARCHITECT'S/ENGINEER'S SELECTED BY OWNER.
2. LIST OF ITEMS WITH INCLUDING PROVISIONS ARE INCLUDED IN LUMP SUM PRICE IN CONTRACT DOCUMENTS.
3. INCLUDE UNDER THIS CONTRACT ARE ELECTRICAL POWER SUPPLY TO SIGN AND CONDUIT/PIPES FOR CONDUIT OF ILLUMINATION AND "TYPICAL" LIGHTS, AS SHOWN IN DRAWING.
4. CONTRACTOR FOR THIS WORK TO COORDINATE WORK FOR SIGN IN 10' D.

NATOMAS PUBLIC LIBRARY
 DEL PASO ROAD AND LIBRARY STREET
 City of Sacramento



SEAL OF THE STATE ARCHITECT



90% CONSTRUCTION DOCUMENTS

INITIAL BOX

DATE	BY	REV	DESCRIPTION

DATE 04/02/2007

JOB NO. 01907-01

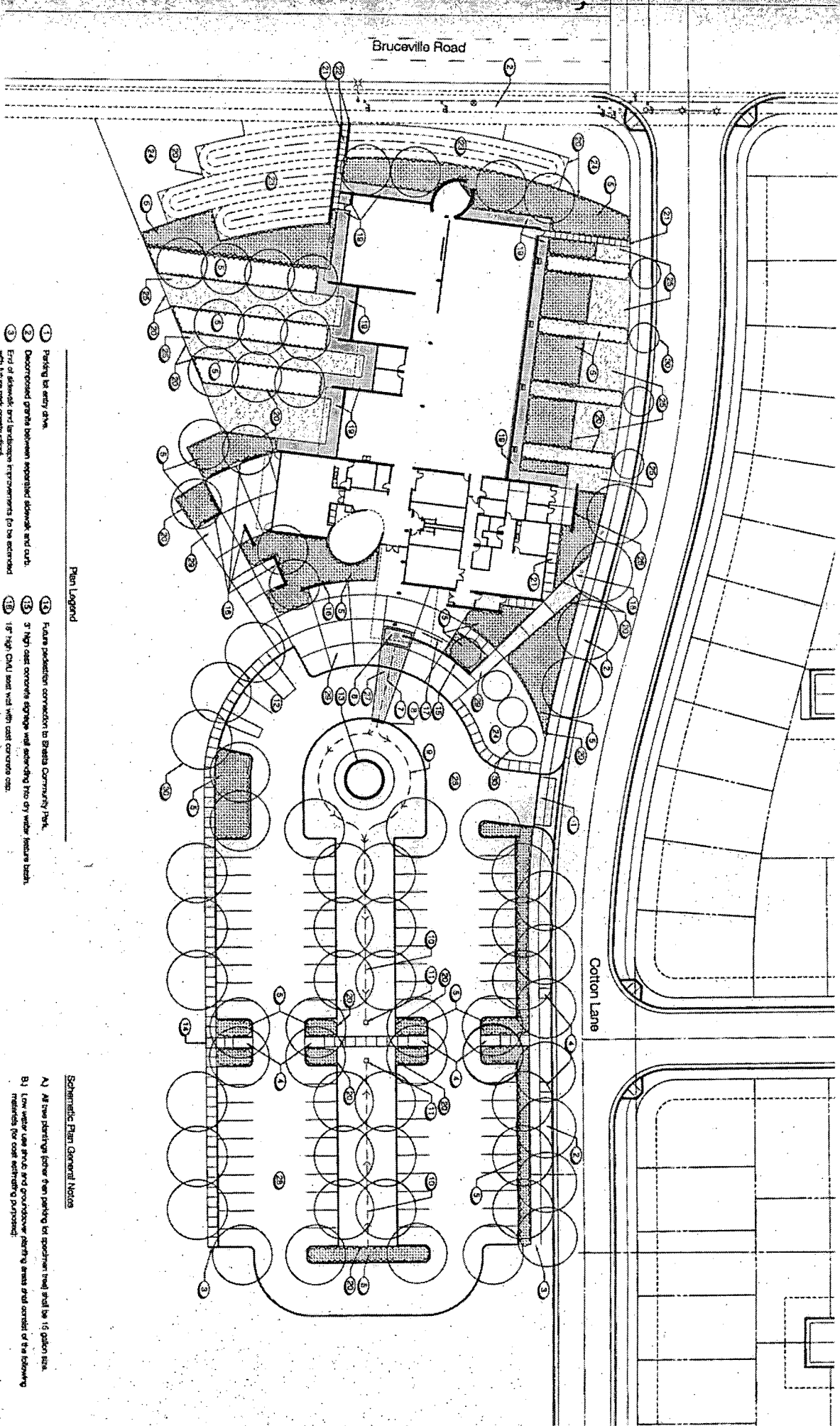
SHEET TITLE

SITE PLAN

SHEET NO.

A0.02

SHEET ___ OF ___ TOTAL



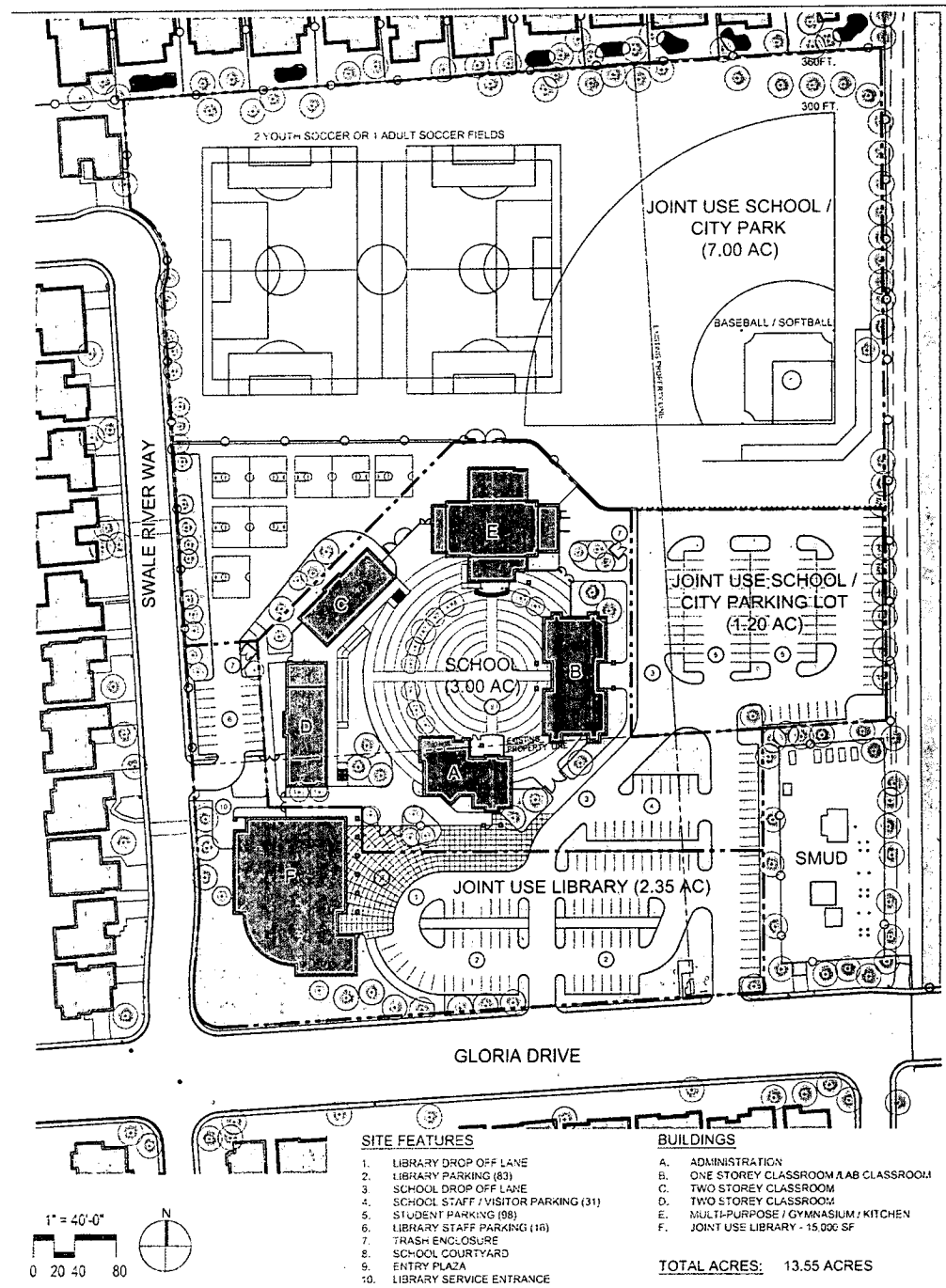
Plan Legend

- 1) Parking lot entry drive.
- 2) Decomposed granite between separated sidewalk and curb.
- 3) Edge of sidewalk and landscape improvements to be screened with laurel palm construction.
- 4) Pedestrian access area.
- 5) Low water use shrub and groundcover planting.
- 6) Dry water retention basin filled with 6" - 12" smooth river cobble to serve as road drain outlet. Basin to be covered on road opening above to accommodate travel.
- 7) 10" diameter drain pipe connection to parking lot grassy swale.
- 8) 24" tall cast concrete "threshold" with drain pipe outlet to grassy swale.
- 9) Grassy swale with ground covered pavement with 2" white granite bottom and 2:1 sloped drained sides.
- 10) Grassy swale with 2" white gravel bottom and 3:1 slope drained sides.
- 11) Faux pedestrian connection to Shasta Community Park.
- 12) 3" high cast concrete skirting wall enclosing fire dry water retention basin.
- 13) 18" high CHAL seat wall with cast concrete cap.
- 14) Blue rock location.
- 15) Decomposed granite pathway connection.
- 16) 8" wide (1/2") foundation base steel filled with 2" - 4" smooth river cobble.
- 17) Landscape containment edge type.
- 18) Library services/emergency exit access walk.
- 19) 2" high CHAL retaining wall with cast concrete caps adjacent to walkway.
- 20) 24" high rounded kerbs with "no-row" access and parking.
- 21) Hydroseeded lawn.
- 22) Decomposed granite bed.
- 23) 4.5" high concrete 18" x 40" wall to screen transformer units.

Schematic Plan General Notes

- A) All new parking lot for spaces that will be 16 gallon size.
- B) Low water use shrub and groundcover planting areas and center of the following materials for cost estimating purposes:
 - 40% 5 gallon shrubs @ 42" on center spacing
 - 60% 1 gallon groundcover @ 24" on center spacing
- C) Grassy swale and art areas are to be hydroseeded fieldsites.
- D) "No-row" access is to be sodded residential, suitable from Pacific Sod (excelsior).
 80% 1 gallon groundcover @ 24" on center spacing
- E) Landscape enhancement signs and the Perrinco "Perrinco Ship" Aluminum Maintenance Sign (503.550.0503)

Pocket Site Plan



April 6, 2007
 SACRAMENTO CITY UNIFIED
 SCHOOL DISTRICT and
 CITY OF SACRAMENTO

SITE MASTER PLAN 9 SCHOOL OF ENGINEERING AND SCIENCES

