

3

CITY MANAGER
RECEIVED
MAR 09 1988

**DEPARTMENT OF
PUBLIC WORKS**

ENGINEERING DIVISION

THOMAS M. FINLEY
ENGINEERING DIVISION MANAGER

CITY OF SACRAMENTO
CALIFORNIA

APPROVED
BY THE CITY COUNCIL

MAR 15 1988

OFFICE OF THE
CITY CLERK

927 TENTH STREET
ROOM 200
SACRAMENTO, CA
95814-2705

916-449-8220

CONSTRUCTION SECTION
640 BERKUT DRIVE
SUITE B
SACRAMENTO, CA
95814-0131

916-449-5282

March 15, 1988

City Council
Sacramento, California

Honorable Members In Session:

SUBJECT: South West Business Park (P-86078) - Approval of Final
Parcel Map

SUMMARY

Adoption of a resolution approving a Final Parcel Map for the South West Business Park, located at the northwest quadrant of Greenhaven Drive and South Land Park Drive, is recommended.

BACKGROUND

On March 25, 1986, the City Council approved a Tentative Parcel Map by adopting Resolution No. 86-223.

All conditions in the staff subdivision report have been met and the Final Parcel Map is presented for approval.

FINANCIAL

All subdivision costs are being paid by the subdivider, Sacramento Savings and Loan Association, a California corporation.

City Council
South West Business Park (P-86078)
March 15, 1988
Page 2

RECOMMENDATION

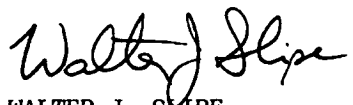
It is recommended that the attached resolution approving the Final Parcel Map be adopted.

Respectfully submitted,



THOMAS M. FINLEY
Engineering Division Manager

Recommendation Approved:



WALTER J. SLIPE
City Manager

Approved:



MELVIN H. JOHNSON
Director of Public Works

JW:vr
D3-03.F
02.2988.1

March 15, 1988
District No. 8

Attachment

RESOLUTION NO. 88-195

ADOPTED BY THE SACRAMENTO CITY COUNCIL ON DATE OF

APPROVED
BY THE CITY COUNCIL
MAR 15 1988
OFFICE OF THE
CITY CLERK

APPROVING FINAL PARCEL MAP
FOR SOUTH WEST BUSINESS PARK (P-86078)

WHEREAS, THE COUNCIL OF THE CITY OF SACRAMENTO FINDS AND DETERMINES AS
FOLLOWS:

- A. The Final Parcel Map for the South West Business Park, located at the northwest quadrant of Greenhaven Drive and South Land Park Drive, with provisions for its design and improvement, is consistent with the City General Plan and the 1976 South Pocket Community Plan.
- B. The Final Parcel Map is in substantial compliance with the previously approved tentative map.

NOW, THEREFORE, BE IT RESOLVED BY THE COUNCIL OF THE CITY OF SACRAMENTO AS
FOLLOWS:

- 1. The Final Parcel Map for the South West Business Park, located at the northwest quadrant of Greenhaven Drive and South Land Park Drive is hereby approved.
- 2. All offers of dedication shown on said map are hereby accepted.

MAYOR

ATTEST:

CITY CLERK

RESUBMISSION OF
TENTATIVE PARCEL MAP

**SOUTH WEST
OFFICE PARK**
CITY OF SACRAMENTO CALIFORNIA

RECORD OWNER & SUBDIVIDER:

SACRAMENTO SAVINGS AND LOAN ASSOCIATION
488 CAPITOL MALL
SACRAMENTO, CA 95814

ENGINEER:

THE SPINK CORPORATION
P.O. BOX 8811
SACRAMENTO, CA 95814

EXISTING ZONING & USE:

OS (PUD), VACANT

PROPOSED ZONING & USE:

OS (PUD), 4 PARCELS FOR OFFICE PARK

WATER SUPPLY & SEWAGE DISPOSAL:

CITY OF SACRAMENTO & PUBLIC SEWER SYSTEM

ACREAGE:

13.81 AC. (NET)

PROPOSED IMPROVEMENTS:

SACRAMENTO CITY STANDARDS

A.P.N.:

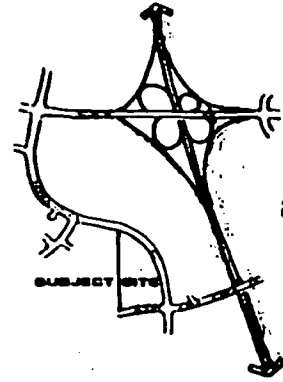
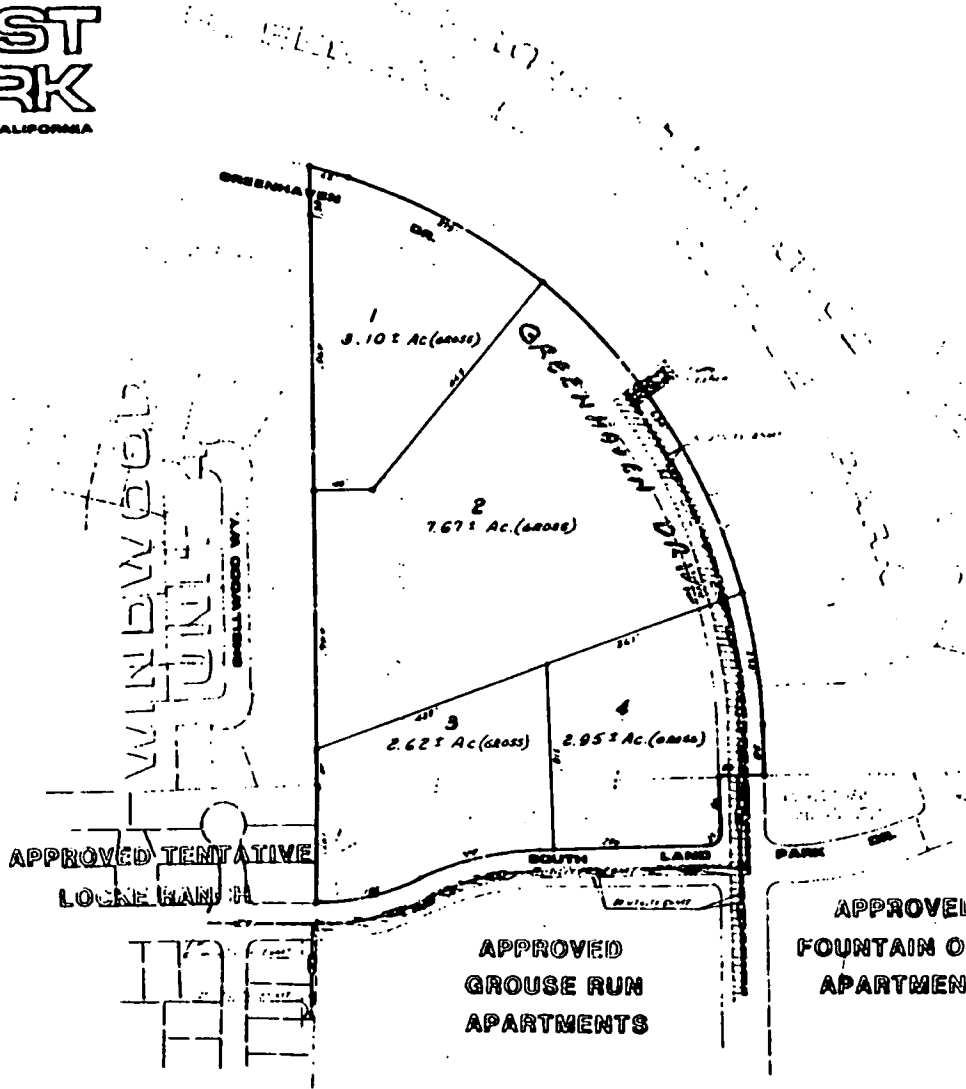
021-088-01, 021-070-0000

PRIOR APPROVAL:

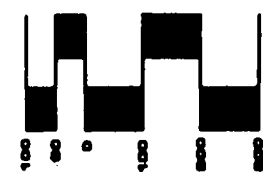
P: 88-883



RESUBMISSION DATE
8-7-88



VICINITY MAP
(NO SCALE)



SCALE IN FEET



THE SPINK CORPORATION

100 Y STREET
SOUTH STREET
SACRAMENTO
CA 95814

916-444-8170

- ARCHITECTURE
- ENGINEERING
- ENVIRONMENTAL
- SURVEYING
- PLANNING

- 1 ARCHITECT APPROVES THE PLAN FOR ALL BUILDINGS AND USES
- 2 CONTRACTOR & OWNER SHALL BE RESPONSIBLE FOR ALL BUILDINGS
- 3 BUILDING SHALL BE IN ACCORDANCE WITH ALL CITY ORDINANCES
- 4 ALL WORK SHALL BE IN ACCORDANCE WITH ALL CITY ORDINANCES

886 078
 3