

**SACRAMENTO METROPOLITAN ARTS COMMISSION  
MINUTES**

Meeting Date: April 18, 2001  
4:00-6:30 p.m.

Central Library/WEST Meeting Room-Floor Level  
828 I Street, Sacramento, CA 95814

For information, call (916) 264-5558.

**COMMISSIONERS**

YVONNE BONACCI	DAPHNE GAWTHROP
BERNADETTE CHIANG	BURNETT MILLER
STEVEN DOERR	DONALD SRONCE
QUAN VAN LEE	JOHN WONG
MARCY FRIEDMAN	GLORIA WOODLOCK

I. CALL TO ORDER at the hour of 4:15 p.m. by Chair Wong.

Present: Bonacci, Chiang, Doerr, Friedman, Gawthrop, Miller, Sronce, Wong, Woodlock. Absent: Le.

Director Walker introduced Steven Doerr, the new Commissioner, who gave a brief autobiography.

Our Commission retreat will be held tentatively on June 2, location to be announced.

II. APPROVE AGENDA OF APRIL 18, 2001.

Moved: Woodlock; seconded: Gawthrop. Ayes: 8      Noes: 0      Absent: 1

III. APPROVE MINUTES OF FEBRUARY 28, 2001.

This item was still being worked on at the time of the meeting. Minutes of the 3/21/01 meeting will be presented at a later time.

IV. COMMITTEE REPORTS (10 MINUTES): Arts Education Task Force (Orosco). Artists in School program is continuing and currently in session, YEA! will be finishing in June for the spring session and opening for the summer session. There are 1-stop centers where students who are qualified can register. The program is always full. There are 3 components to the summer program: 3-D animation, stagecraft and Community Murals.

The Power of Art in Learning workshop was held April 5, 6 and 7 for 40 instructors from different schools who learned how to implement art into their school curriculum. Each instructor received 1-2 credits toward their degree. City Council was not represented. It was a recovery-fee conference.

April 17 was the first meeting of the Arts Education Task Force. The purpose was to bring all arts organizations who teach art to children together to learn how to bring arts back into the schools. The 3-4 hour workshop was a process of evaluation and assessment on how to bring the arts back into education.

May 9 there will be a conference "The Second Sacramento Area Congress on the Arts in Education" at the Convention Center on how to implement arts into the schools. The National Endowment for the Arts, the Arts Council, and civic leaders will be among the presenters.

---

V. ACTION ITEMS:

A. APPROVE GIFT OF ARTWORK BY ARTIST DUKE CAHILL FROM THE CAHILL FAMILY (BLOOM):

COMMITTEE ACTION: APPROVE Meeting April 4, 2001

COMMISSION ACTION: Moved: Miller; seconded: Sronce

Ayes 9 Noes 0 Absent 1

Steve Vanoni and Linda Bloom presented photographs of the artworks that the Cahill Family wishes to donate to the City of Sacramento. They include a dog, cat, a bird with an egg (which will go to the Crocker Art Museum), gates and assemblage (to the Convention Center), an alien, and a cyclops. The 4 art pieces that will go to APP (dog, cat, alien and cyclops) have been appraised at \$25,000. Time is of the essence in moving these outsider-art pieces, as a new buyer has been found for the property and he intends to bulldoze all the remaining pieces. The alien will possibly go to the Convention Center Sculpture Garden, but the sites of the other pieces are still being decided. Commissioners don't want to separate the dog and cat, and keeping all the pieces together as a collection was suggested. They are fiberglass-coated concrete, quite large and bulky, and hopefully will only be moved once. Fred Teichert and Burnett Miller are working together to re-site the pieces. Bloom was requested to bring some site suggestions to the next Commission meeting.

---

B. APPROVE ARTIST/PROPOSALS FOR MEADOWVIEW CITY SERVICES COMPLEX PROJECT (BLOOM):

COMMITTEE ACTION: APPROVE Meeting April 4, 2001

COMMISSION ACTION: Moved: Woodlock; seconded: Bonacci

Ayes 8 Noes 0 Absent 2

Artwork in the courtyard is by Troy Corliss, in the entry by Yoshio Taylor. The recycled art show at SMUD is going to be a juried show, with the winners' pieces going to Meadowview.

Jose Lott has been chosen to do 4 murals at the complex relating to the history of recycling and solid waste disposal. Each mural will invoke a particular response. All four pieces are in different styles, showing Mr. Lott's versatility, and will be installed as they are finished instead of being held until all 4 are in place. Mr. Lott is being paid a very modest amount, but he claims that since he works fast and is going to be assisted by youth and artists from the community that this is not a problem. He presented 4 proposals that were enthusiastically received by the Commissioners.

---

C. APPROVE COMMISSION BY-LAW CHANGES (WALKER):

This item was tabled until the next meeting.

---

VI. PRESENTATION(S): None

---

VII. DISCUSSION ITEM(S): Monday 4/23 is the Cesar Chavez Plaza art dedication. Saturday is the EPA building dedication. However, the artwork will be dedicated in September when all the artists can be present. SMAC will moving to their new office on Del Paso Blvd. on or about May 14. La Raza has a preservation rights workshop coming up in May. There were 40 attendees at the copyright workshop. Director Walker was present on the SLPP panel that had a diversity program component. The presenters of the diversity portion were out of San Diego and Director Walker would like to bring them here to do a presentation to the arts community. NAS' financial assessment is being finalized. A feasibility study is being conducted for community support for a symphony: what does the community want/intend to support? SMAC tried to interest NAS but they are already committed. There is a bill (SB869) in the Assembly to restore arts education to schools. It deals with teaching training, artist development and funding.

---

VIII. PUBLIC TESTIMONY: None

---

X. CHAIR'S REPORT: None.

---

X. DIRECTOR'S REPORT: None.

---

XI. OLD OR NEW BUSINESS: None.

---

XII. ADJOURNMENT: There being no further business, the meeting was adjourned at 5:30 p.m. by Chair Wong.

**THE NEXT COMMISSION MEETING WILL BE HELD ON WEDNESDAY, MAY 23, 2001**

# Continental

STORE FIXTURE, INC.

3950 Norwood Ave. Sacramento CA 95838

Ph. 916-820-3030

Fax 916-820-3123

TO: THE HLA GROUP

DATE: 4/4/01

ATTN: JOHN NICOLAUS

RE: SACRAMENTO INTERNATIONAL AIRPORT

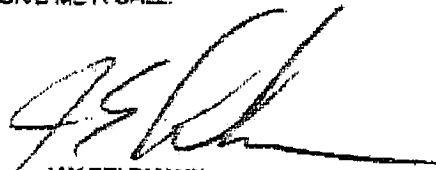
WE PROPOSE TO MANUFACTURE, DELIVER, AND INSTALL THE FOLLOWING AS PER PLANS AND SPECIFICATIONS.

ITEM	QTY	EACH	TOTAL
MUSEUM CASE PER SPEC. (48" X 48" X 80"H.)	10	\$3,885.00	138,850.00
MUSEUM CASE PER SPEC. (24" X 48" X 80"H.)	2	8,580.00	16,160.00
DELIVERY	1		2,194.00
INSTALLATION	1		3,108.00
SALES TAX	1		4,588.00
JOB TOTAL			165,718.00
ADD FOR LAMINATED SECURITY GLASS	1		8,524.00
ADD FOR CLEAR POLYCARBONATE ACRYLIC	1		7,555.20

PLEASE ALLOW 12 WEEKS FOR FABRICATION AFTER APPROVED SHOP DRAWINGS.

THANK YOU FOR THE OPPORTUNITY TO BID THIS PROJECT. SHOULD YOU HAVE ANY QUESTIONS, PLEASE GIVE ME A CALL.

SIGNED,



JAY FELDMANN

April 24, 2001

Mr. John Nicolaus  
H. L. A GROUP ARCHITECTS  
1990 Third Street  
SACRAMENTO, CA 95814

VIA: TELEFAX & U.S. MAIL  
916-447-8270

MUSEUM  
DISPLAY CASES

Subject: *Pedestal Display Cases* E-6962  
Sacramento International Airport

PLEWALLS  
MODULAR EXHIBIT  
COMPONENTS

Dear Mr. Nicolaus:

Thank you for your interest in our quality display cases. Per your request, we are pleased to provide you with pricing information as follows:

FIBER OPTIC  
LIGHTING

A. DESCRIPTION

1. Ten (10) PEDESTAL DISPLAY Cases with glass hood.

Approximate measurements for each case as follows:

- ♦ Length: 48 inches
- ♦ Overall Width: 48 inches
- ♦ Base Height: 24 inches
- ♦ Visible Glass Height: 36 inches
- ♦ Total Height: 60 inches

TECHNICAL  
CONSULTING

The design of the pedestal base will be a flush construction.

2. Two (2) PEDESTAL DISPLAY Case with glass hood

Approximate measurements for each case as follows:

- ♦ Length: 48 inches
- ♦ Overall Width: 24 inches
- ♦ Base Height: 24 inches
- ♦ Visible Glass Height: 36 inches
- ♦ Total Height: 60 inches

ARCHITECTURAL  
WOODWORK

Display case consists of frameless, five-sided glass hood mounted atop four-sided painted pedestals. The glass hood is constructed of 5/16" thick laminated glass. Vertical glass edges are precision ground, mitered and joined with our exclusive white cement; forward edges of glass top are ground and polished. The glass hood is permanently set within a metal frame that locks to and is supported by the table base.

Pedestals and metal frames are lacquer finished with two-component polyurethane, your choice of our standard colors.

The interior display platform is removable, constructed of formaldehyde-free materials and wrapped in our standard linen fabric or fabric supplied to us by the Owner.

#### B. PRICE

Our cost for item 1 and 2 as described above is \$ 150,670.00. Price is FOB our plant in Baltimore, Maryland.

#### ALTERNATE PRICING

Our cost for item 1 and 2 as described above including a clear acrylic hood in place of the glass hood is \$ 101,700.00. Price is FOB our plant in Baltimore, Maryland.

#### OPTIONS 1

Our cost for adding casters at twelve display cases per item 1 and 2 as described above is \$ 12,000.00 in addition to the cost above.

#### Option 2

Our cost to add one (1) pair of "Roller Lifters" is \$1,150.00.  
(This equipment is used to move display cases).

Pricing is subject to the terms and conditions stated in this offer; prices are valid for 30 days. Our pricing is based on available information and includes our engineering, and production of shop drawings.

Sales or use tax, if applicable, is not included.

#### C. EXCLUSIONS/CLARIFICATIONS

We exclude the following items:

- ❖ Field measuring
- ❖ Installation
- ❖ Desiccant Tray
- ❖ graphics, labels or signage
- ❖ Glass shelves and hanger brackets
- ❖ Light fixture / eggcrate lens

**D. TERMS OF PAYMENT**

Our normal terms of payment for a project of this type call for an initial payment of 1/3 of contract price with order. A second payment of 1/3 of the contract price is payable during manufacturing of the order and the balance is due upon readiness for shipment.

**E. SCHEDULE & DELIVERY**

All of our display cases are manufactured to our clients technical display requirements. Based on our current production schedule, delivery is estimated to be approximately 10 to 12 weeks from receipt of your firm order and clarifications of all details. A firm delivery schedule will be established upon full compliance to above terms and dependent upon the timely receipt of required client approvals in accordance with our schedule.

We look forward to hearing from you. Should you have any question, please do not hesitate to call.

Sincerely yours,

HELMUT GUENSCHER, INC.



Farida Ferri Clark  
Product Manager



Custom Design & Fabrication



April 3, 2001

John Nicolaus  
The HLA Group, Landscape Architects & Planners  
1990 Third Street, Suite 500  
Sacramento, CA 95814

Dear John

Thank you for including Mystic Scenic Studios among your choices of potential fabricators for your Sacramento Metropolitan Arts Commission, Display Cases for Sacramento International Airport.

Enclosed herewith, please find two document packages: The blue contains applicable proposal information for the exhibitry mentioned above; the second is a brief overview of our company's fabrication abilities' and a brief overview of a few references for your use.

We have quoted the exhibit components based on our understanding of the description and the "Instructions to Bidders" that we received. In doing so, we feel that there are several areas that can be opened to discussion for the purpose appearance and design with the opportunity to lend our expertise, if chosen to fabricate and install this exhibit.

If you have questions, or feel you need additional information. Please feel free to contact myself or Peter and we will be happy to assist you.

Once again, thanks for considering Mystic Scenic Studios for your project.

Very truly yours,

Kurt W. Einstein  
Project Manager



Custom Design & Fabrication

**JOB PROPOSAL**

**Proposal submitted to: John Nicolaus  
The HLA Group, Landscape Architects & Planners  
1990 Third Street, Suite 500  
Sacramento, CA 95814  
(ph) : 916-447-7400  
(fax): 916-447-8270**

**Date submitted: April 3, 2001**

**Ship Date: 4 weeks after signing and receipt of deposit**

**Please refer all inquiries about this proposal to Kurt W. Einstein / Peter Dorson**

**Job Name: Sacramento Metropolitan Arts Commission:**

**Display Cases for Sacramento International Airport**

**Job Description: See Attached Schedule: A**

**Cost as required by above specifications: \$48,810.00\*\* \***

**Payment Schedule:**

On signing: 50% deposit	\$24,405.00
Prior to shipping: 40%	\$19,524.00
Upon completion 10%	\$4,881.00

Labor quotations, if supplied, are estimates only. Actual hours will be billed on completion and payment due upon receipt. \*On acceptance of proposal, invoices will be supplied; faxed and mailed

\*\*Plus applicable state sales tax if no re-sale/exempt certificate is provided

*All material is guaranteed to be as specified. All work to be completed in a professional manner according to standard practices. Any alteration or deviation from above specifications involving extra costs will be executed only upon written orders and will become an extra charge over and above the estimate. All agreements are contingent upon strikes, accidents, and delays beyond our control. All work and employees are fully insured.*

**NOTE: This proposal may be withdrawn by us if not accepted within 7 days.  
accepted by:**

Kurt W. Einstein  
Mystic Scenic Studios, Inc.

\_\_\_\_\_ Date \_\_\_\_\_  
John Nicolaus  
The HLA Group, Landscape Architects & Planners



Custom Design & Fabrication

**SCHEDULE A**

Job Name: **Sacramento Metropolitan Arts Commission:  
Display Cases for Sacramento International Airport**

Date: April 3, 2001

As per written description Dated March 27<sup>th</sup> 2001 Project # 727000.01 for the above mentioned exhibit casework.

**Casework construction:**

- Stock finish aluminum powder-coated "Foga" aluminum extrusion including all appropriate hardware
- Darnell swivel and straight locking casters w/ access from case interior
- Two key locks
- Case interior, Nevamar-Dove Grey S-6-3T
- Exhibit case base, Nevamar, Phantom Grey Matrix MR-6-7T
- All acrylic to be 3/8" thick and gaskets for a snug fit

2 Units @ 4' x2' x5'	\$2,430.00 each	\$4,860.00
10 Units @ 4' x4' x5'	2,580.00 each	\$25,800.00

Add Alternate for 1/4" Laminated Glass in Lou of 3/8" acrylic ADD \$7,920.00

**Notes**

- All colors are suggestions and available for change
- Aluminum extrusion is based on clear powder-coat. Custom colors are available for added cost.
- Cost per unit is based on complete order of 12 total units.
- The two smaller units will have added weight at the base for stability

**Shipping and installation:**

Shipping	\$6,150.00
Installation Travel and Labor	12,000.00

**Notes**

- Shipping cost is based on 10 day transport allowance
- Installation cost is based on two installers on site for one day
- It is assumed there is a loading dock and disposal facilities for packing materials



Custom Design & Fabrication

**MYSTIC SCENIC STANDARD RATES: as of January 1, 2001**

In shop @ \$58.00/hr \*

Construction  
Painting  
Graphics Production

In shop @ \$72.00/hr \*

Design/Drawing/Drafting  
Computer Graphics  
Consultation

Warehouse/Trucking:

Box truck booking has a 2-hour minimum  
Tractor-trailer booking has a 4-hour minimum

Truck & one driver  
Waiting

\$3.00 per mile – 50 mile minimum  
\$58 per hour after two hours

Tractor trailer & driver

Available

Warehouse labor  
Storage fees

\$50 per hour per person  
\$ .18 per cubic foot per month

Out of shop - local

4 hour minimum (within one hour)  
\$50 per hour per person

Out of town:

Travel time

\$250 per day per person, up to 10 hrs

Labor rate -full day:

\$500 per day per person, up to 10 hrs

-Long day:

\$600 per day per person, up to 12 hrs

-Overtime:

\$75 per hour per person after 10 hrs / 12 hrs

Per Diem

\$60 per day per person

Foreign per diem

TBD

On-call days

50% of day rate, plus per diem

Layover days

per diem and expenses only

All rates are plus expenses - airfare, accommodations, vehicle rental, etc.

*\*All rates go to time and a half after 40 hours and/or after 10 hours in one day. All Sunday hours, legal holidays, and after midnight is at the time and a half rate as well.*



1105 East St.  
Dedham Ma. 02026  
(781) 329-9006

SACRAMENTO  
INT. AIRPORT

DISPLAY CASES

Notes:

Designed by: KWE

Project #: 72700.01

Project Manager: KWE

Drawn By: RWP

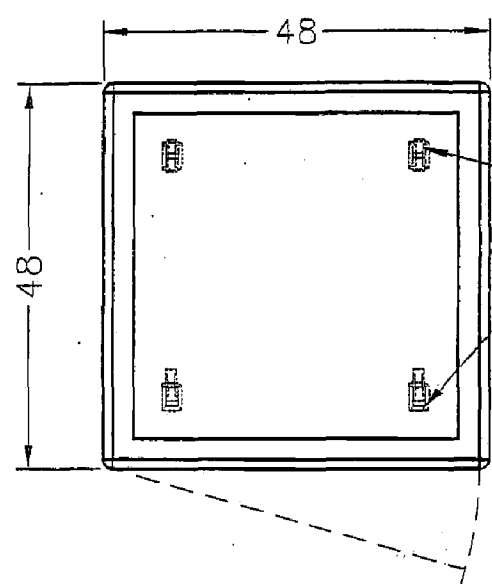
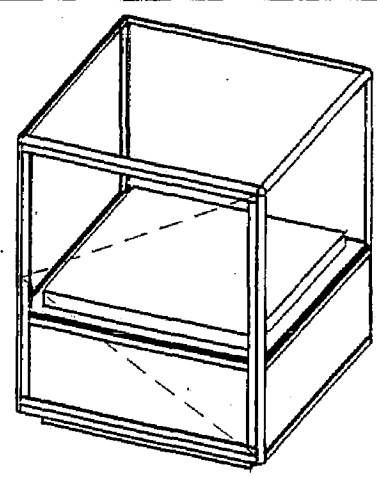
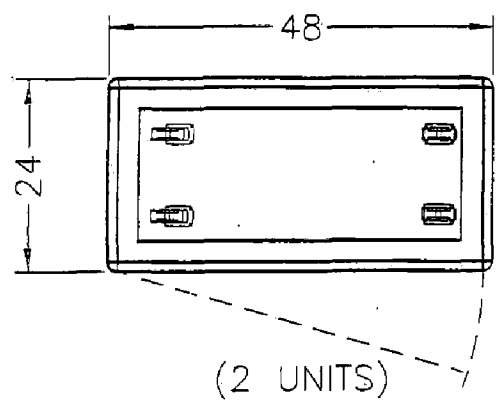
Revised:

Date: 4/3/01

Scale: 1/2"=1'-0"

Plate:

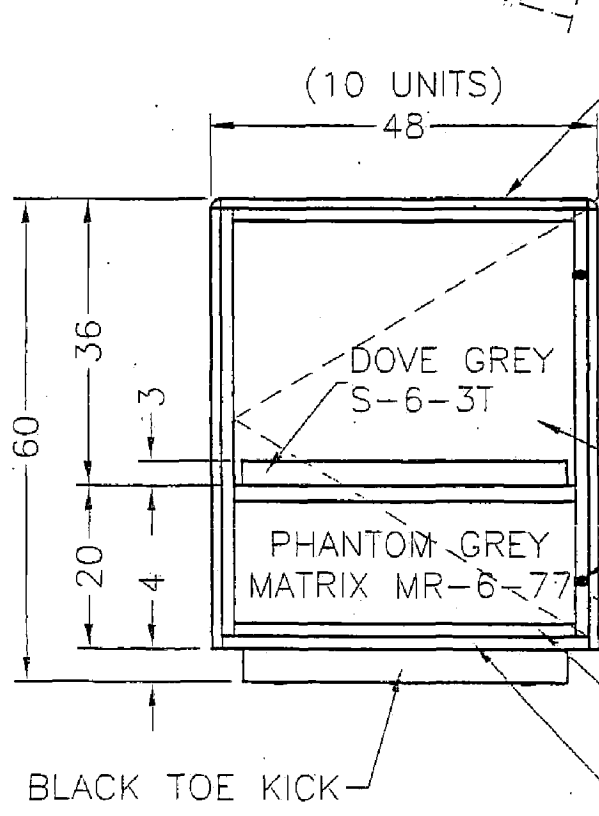
C-1



FIXED CASTERS

SWIVEL CASTERS

NOTE:  
CASTERS ARE  
ACCESSIBLE FROM  
INSIDE OF CABINET



3/8" CLEAR ACRYLIC

CORNER COUPLING 950

NOTE:  
ALL CONNECTION  
HARDWARE IS  
CONCEALED.

3/8" CLEAR ACRYLIC

CAMLOCK, TYP FOR 2

CORNERS PROFILE 92LR  
ANODIZED ALUMINUM

DOOR FRAME PROFILE 91  
ANODIZED ALUMINUM

PERIMETER PROFILE 92F  
ANODIZED ALUMINUM



1105 East St.  
Dedham Ma. 02026  
(781) 329-9006

SACRAMENTO  
INT. AIRPORT

DISPLAY CASES

Notes:

## FOGA SYSTEM . . . No other way makes it so easy!

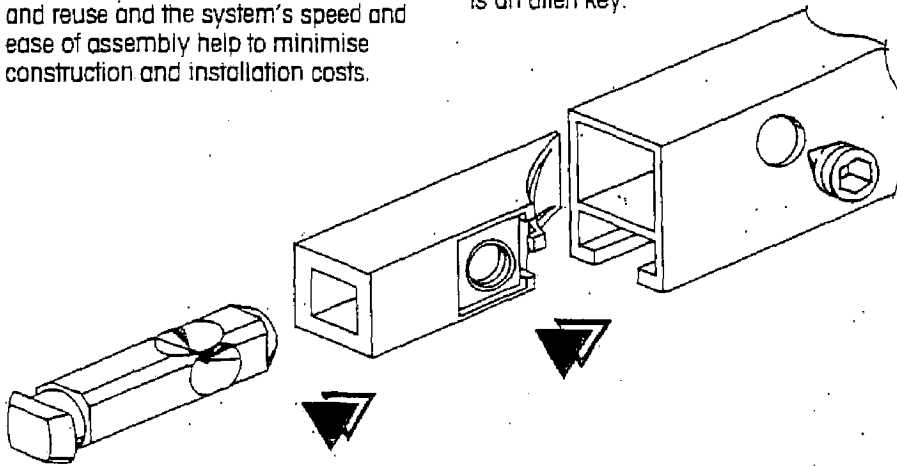
FOGA's wide range of aluminium extrusions and components offers limitless expression to both the designer's dilemma and the craftsman's creativity.

With FOGA even non-standard designs provide maximum scope for adaptation and reuse and the system's speed and ease of assembly help to minimise construction and installation costs.

## The Key to FOGA Assembly

The key to FOGA assembly is the exclusive FOGA coupling. All extrusions have channels to accept the coupling providing infinite adjustments and flexibility. The coupling itself can be fitted to any extrusion which has the 20mm x 20mm square built into its shape.

The only tool needed to assembly FOGA is an allen key.



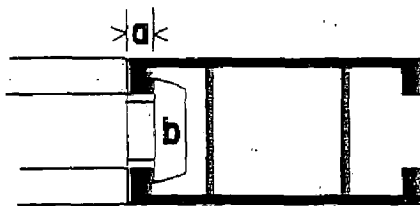
Illustrated is FOGA Profile 91. A 10mm hole is punched or drilled 28mm from the end of the profile to the centre of the hole.

The consistency of these measurements allows for the coupling to be inserted in all appropriate FOGA Profiles and ensures accuracy of performance at all times.

There is only one FOGA coupling required to perform all locking operations, thereby removing any possibility of wrong couplings being supplied, a minimum of inventory control problems and complete interchangeability of the couplings for any application. The FOGA coupling is patented in 19 countries.

## Superior Strength of the FOGA System

The FOGA coupling system gains its superior locking strength through two main features:



- (a) The 3mm profile shoulders.
- (b) The double locking faces of the locking bolt which positively engage against both shoulders ensures that profiles being coupled are square to each other at all times.

The patented FOGA coupling consists of:

1. A hard wearing nylon case.
2. A steel combination locating carriage and nut (shown positioned in the case).
3. A steel double faced locking bolt which allows horizontal and vertical use.
4. A hardened steel grub screw.

Designed by:

KWE

Project #:

72700.01

Project Manager:

KWE

Drawn By:

RWP

Revised:

Date:

4/3/01

Scale:

1/2"=1'-0"

Plate:

C-2