

Agenda
City of Sacramento
Sacramento Metropolitan Arts Commission

ART IN PUBLIC PLACES COMMITTEE MEMBERS:

John Nicolaus, Chair
Les Birleson
Lynn Eder

Nancy Gotthart
Linda Johnston-Panattoni
Carlin Naify

Susan Selix
Don Sronce
Jennifer Tachera

Sally Shapiro

CITY STAFF:

*Linda Bloom, APP Administrator
Shelly Willis, APP Administrator
Tracy Anstead, APP Program Assistant*

Art in Public Places Committee

AGENDA

Wednesday, January 9, 2007 2:30-4:45pm

Sacramento Convention Center, Room 103

1400 J Street

Sacramento, CA 95814

All items listed are heard and acted upon by the Sacramento Metropolitan Arts Commission unless otherwise noted.

Call to Order – 2:30 p.m.

Roll Call

Consent Calendar

All items listed under the Consent Calendar are considered and acted upon by one motion.

Anyone may request that an item be removed for separate consideration.

No items have been approved for the consent agenda.

- 1. Approval of Agenda for January 9, 2007**
- 2. Approval of Minutes for December 12, 2007**
Recommendation: Approve Meeting Minutes
Contact: Linda Bloom, Administrator, Art in Public Places, 566-3971
(Sept. 12, 2007, November 14, 2007, Nov. 28, 2007 minutes to be reviewed at Feb. 2008 APP meeting)

Staff Reports

Staff reports include oral presentations and those recommending receive and file.

3. **Title: Approval of Valley-Hi Library Proposals**
Recommendation: Review and approve proposals
Contact: Linda Bloom, Administrator, Art in Public Places, 566-3971,
Diana Walker-Smith, Consultant, 566-3992
4. **Title: George Sim Community Center**
Recommendation: Review and approve
Contact: Linda Bloom, Administrator, Art in Public Places, 566-3971,
Diana Walker-Smith, Consultant, 566-3992
5. **Title: Revised City Park Proposals**
Recommendation: Review and approve
Contact: Linda Bloom, Administrator, Art in Public Places, 566-3971,
Don Tarnasky, Consultant, 566-3992
6. **Title: Approval of Airport Public Art Budget**
Recommendation: Review and approve
Contact: Rhyena Halpern, Director, Sacramento Metro Arts Commission, 566-3989

Discussion Items

7. **Review of Responses from Airport to APP Committee Memorandum**

Informational Items

8. **Committee Policy and Procedure Review on Tuesday, January 15, 2008, 4-6pm at SMAC.**

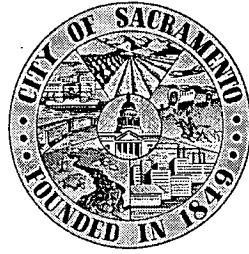
Public Comments - Matters Not on the Agenda

Donor Reception, 5-7pm, immediately following APP Committee meeting in West Lobby.

Questions, Ideas, and Announcements of Commission Members

Adjournment: 5:00pm

Next APP Meeting will be on Wednesday, February 13, 2008 at Coloma Community Center.



**Minutes
City of Sacramento
Sacramento Metropolitan Arts
Commission
Art in Public Places Committee**

COMMITTEE MEMBERS:

John Nicolaus, Chair
Les Birluson
Lynn Eder
Nancy Gotthart

Linda Johnston-Panattoni
Carlin Naify
Susan Selix
Don Sronce

Jennifer Tachera
Sally Shapiro

CITY STAFF:

*Linda Bloom, Art in Public Places Administrator
Tracy Anstead, Art in Public Places Assistant*

MINUTES

December 12, 2007

***Art in Public Places Committee
Downtown Public Library
828 I Street, Sacramento, CA 95814
East Meeting Room***

All items listed are heard and acted upon by the Sacramento Metropolitan Arts Commission unless otherwise noted.

Call to Order – 04:10 p.m.

Roll Call - Present: Gotthart, Eder, Sronce, Shapiro, Naify, Nicolaus

Late: 3 Selix, Johnston-Panattoni, Tachera

Absent: 1 Birluson

Guests: Rhyena Halpern

Consent Calendar

All items listed under the Consent Calendar are considered and acted upon by one motion. Anyone may request an item to be removed for separate consideration.

- 1. Approval of Agenda for December 12, 2007**
Location: Downtown Public Library, 828 I Street, Sacramento, 95814
Recommendation: Approve APP Agenda
Contact: Tracy Anstead, APP Assistant, 566-3977

Motion: Sronce moves to approve
Vote: 9 aye, 0 noe, 1 absent.
Agenda approved.

Second: Eder

2. **Approval of Minutes for September 12, 2007, November 14, 2007, and November 28, 2007 APP Meetings**

Recommendation: Approve Meeting minutes

Contact: Linda Bloom, Administrator, Art in Public Places, 566-3971

Request from Chair for Committee to submit their revisions of minutes to staff. Hand written September minutes requested. City Clerk to be contacted by APP staff re: rules and regulations of minutes and report back.

Motion to approve September 12, 2007 minutes:

Selix moves to disapprove until revised.

Second: Sronce

Motion to approve November 14, 2004 and November 28, 2007 minutes:

Tabled until January 9, 2008 APP Committee meeting or as soon as possible.

Discussion Items

3. **Airport: Update**

Summary: Workshop on January 26, 2008 with Committee and interested Commissioners to kick off Airport Arts Plan with Regina Almaguer and Susan Ponteus; Explanation/Clarification of Airport architect's consultant role in project; Airport personnel to answer memo submitted by Committee with APP Chair to forward response from airport personnel to Committee prior to January 9, 2008 meeting.

4. **Policies and Procedures Recommendations**

Special APP Committee meeting dates suggested for review of Policies and Procedures.

Staff Reports (Previously referred to as "Action Items" on APP agenda)

5. **Title: Review of Oak Park Community Center Proposal of Frankie Hansbeary and Mentor, Donna Billick**

Recommendation: Review and approve proposal

Contact: Linda Bloom, Administrator, Art in Public Places, 566-3971,
Diana Walker-Smith, Project Consultant, 566-3992

Motion: Gotthart moves to approve

Second: Eder

Vote: 9 aye, 0 noe, 1 absent.

Proposal approved

6. **Title: Approval of Donation by Chris Botta of Farrar Wilson Artwork**

Recommendation: Approve donation

Contact: Linda Bloom, Administrator, Art in Public Places, 566-3971

Motion: Naify moves to approve

Second: Johnston-Panattoni

Vote: 5 aye, 1 noe, 1 absent, 2 abstentions

Donation approved.

7. **Title: Approval of 14 City Parks Proposals**
Recommendation: Review and approve proposals
Contact: Linda Bloom, Administrator, Art in Public Places, 566-3971,
Don Tarnasky, Project Consultant, 566-3992

Each proposal voted on individually.

Airfield Park: Willem DeGroot

Motion: Gotthart moves to approve Second: Eder

Vote: 9 aye, 0 noe, 1 absent

Proposal approved

Peregrine Park: Owen Gabbert

Motion: Eder moves to revise bench end pieces Second: Gotthart

Vote: 7 aye, 2 noe, 1 absent

Proposal to be revised

Swainson's Park: Donna Billick

Motion: Sronce moves to approve

Second: Johnston-Panattoni

Vote: 9 aye, 0 noe, 1 absent

Proposal approved

Magnolia Park: Colin Lambert

Motion: Naify moves to approve

Second: Eder

Vote: 9 aye, 0 noe, 1 absent

Proposal approved

N. Natomas Pak: Michael Riegel

Motion: Selix moves to approve

Second: Eder

Vote: 9 aye, 0 noe, 1 absent

Proposal approved

Fisherman's Lake: Richard Feese

Motion: Tachera moves to approve

Second: Shapiro

Vote: 9 aye, 0 noe, 1 absent

Proposal approved

Dogwood Park: Mark Abildgaard

Motion: Shapiro moves to approve

Second: Eder

Vote: 7 aye, 1 noe, 1 absent, 1 abstention

Proposal approved

Valley Oak: Alan Shepp

Motion: Johnston-Panattoni moves to approve

Second: Tachera

Vote: 9 aye, 0 noe, 1 absent

Proposal approved

Reichmuth Park: Lane Van Doren

Motion: Johnston-Panattoni moves to redesign

Second: Tachera

Vote: 9 aye, 0 noe, 1 absent

Proposal to be revised



SACRAMENTO METROPOLITAN ARTS COMMISSION

A City County Agency

January 9, 2008

**Honorable Chair and
Members of the Art in Public Places Committee**

Title: Approval of Artist's Proposals for the Valley-Hi North Laguna Library project. (City, CIP QA37)

Location/Council District: Bruceville Rd., Sacramento District 8

Recommendation: The artist selection panel and APP staff recommend approval of proposal for the Children's Tower, proposal for the adult area, and proposal for the sculptural element for the Valley-Hi North Laguna Library.

Contact: Linda Bloom, Administrator for Art in Public Places (APP) (916) 566-3971, Diana Walker-Smith, APP Project Consultant, (916) 566-3992.

Description/Analysis

Issue: On Friday, January 4, 2008 a panel comprised of Lois Ross, Facilities Manager, Sacramento Library; Chris Freeman, Branch Services Manager, Sacramento Public Library; Michael Sweeney, Department of General Services Project Manager; Matthew Wadlund, architect from Noll and Tam, Carlin Naify, Art in Public Places Committee; Dan Gorfain, SMAC Commissioner; Rommel Declines, community representative; and Jose Lott, artist met to review the 10 proposals submitted for the three project sites. The finalists for the three project areas are: Children's Tower – Joe Scarpa, Stephanie Taylor, and Roger Lewis; Adult Area – Charlotte Cooper, Taylor Gutermute, and Kurt Steger; Sculptural Element – Jenny Hale, Michael Riegel, Alan Shepp, and Dean Tokuno. The panel recommends that the proposals in Attachment 3 be forwarded to the APP Committee for review.

Policy Considerations: City ordinance requires that 2% of construction projects be set aside for public artwork. The selection of artists through the Public Art Resource Registry(PARR) meets with APP Standard Policies and Procedures and the goal of site-specific public art.

Commission/Committee Action: APP Committee will review the proposals at its regular meeting on Wed. January 9, 2008.

2030 Del Paso Boulevard
Sacramento, California 95815-3022

Phone (916) 566-3992
Fax (916) 566-3996
www.sacculture.com
www.artcap.org

Environmental Considerations: The artists will provide engineering drawings and installation details to comply with all applicable codes, CEQA Guidelines 15301 and work within the parameters established by the City Department of General Services. APP staff and the artists will be required to attend planning, review, and coordination meetings with City project teams and will mitigate any safety, durability, and maintenance concerns.

Rationale for Recommendation:

The artists and proposals selected through PARR support SMAC/APP's goal to provide opportunities for local and regional artists. Also, approval of the recommended artists and proposals will provide for early inclusion in the construction project schedule and will allow for smooth integration of the artwork.

Financial Considerations:

Based on 2% of construction costs, \$143,641 is available for administrative costs, artwork and proposal fees. (See Attachment 2)

Emerging Small Business Development (ESBD): APP will make every effort to register eligible artists and vendors for the ESBD program.

Respectfully submitted,

Diana Walker-Smith
Art in Public Places Project
Consultant

Linda Bloom
Art in Public Places Administrator

Attachments:

- 1- Background
- 2- Budget
- 3- Proposals

Attachment 1

Background:

Panel Meeting Phase 1: On Thursday, September 6, 2007, a phase I artists selection panel was convened to select finalists for the three projects defined in the approved arts plan for the Valley-Hi North Laguna Library project. Panelists for this phase I panel included Lois Ross, Facilities Manager, Sacramento Library; Chris Freeman, Branch Services Manager, Sacramento Public Library; Michael Sweeney, Department of General Services Project Manager; Matthew Wadlund, architect from Noll and Tam, Carlin Naify, Art in Public Places Committee; Dan Gorfain, SMAC Commissioner; Rommel Declines, community representative; Jose Lott, artist; and Diana Daniels, arts professional (Crocker Art Museum). The artists selected for the three project areas were the following: Children's Tower – Joe Scarpa, Stephanie Taylor, and Roger Lewis; Adult Area – Charlotte Cooper, Taylor Gutermute, and Kurt Steger; Sculptural Element – Jenny Hale, Michael Riegel, Alan Shepp, and Dean Tokuno.

Schedule: The construction of the Valley-Hi North Laguna Library project is scheduled to begin in April of 2008 with a completion date of April 2009. Due to the nature of the funding source for this project, all work, including fabrication and installation of artwork, must be completed by April 2009.

Library Amenities: The City of Sacramento and the Sacramento Public Library are committed to making their libraries green buildings that are beautiful, functional, and high performing. Valley-Hi No. Laguna Library seeks Leadership in Energy and Environmental Design (LEED) Gold Certification. The future library will be a 20,000 sq. ft. facility located on Bruceville Road across from Cosumnes River College. The facility will feature such amenities as a separate children's and teen reading room, a community meeting room, food court, public computers, and a sales area for Friends of the Library.

Attachment 2

Budget for Valley-Hi North Laguna Library

\$ 38,678.00-	APP admin. including consultant
\$ 2,035.80-	Maintenance
\$143,641.60-	Artwork, proposals
	\$40,000 for the children's tower
	\$40,000 for the adult area
	\$60,000 for the sculptural element

\$203,569.00 - Total Available

**Attachment 3
Proposals**



SACRAMENTO METROPOLITAN ARTS COMMISSION

A City County Agency

January 9, 2008

**Honorable Chair and
Members of the Art in Public Places Committee**

Title: Approval of Proposals for George Sim Community Center. (City) (PN: BC42)

Location/Council District: 6207 Logan Street, Sacramento, District 6

Recommendation: APP staff and Committee recommend approval of the proposals for George Sim Community Center Project including 1) incorporation of glass artwork for the façade of the community center, and 2) proposal by artist Pat Carrillo for Phase II artwork.

Contact: Linda Bloom, Administrator for Art in Public Places (APP) (916) 566-3971,
Diana Walker-Smith, APP Project Consultant, (916) 566-3992.

Description/Analysis

Issue: The arts plan approved by APP and SMAC recommended that a glass artist be selected for Phase I new artwork through a limited competition process. Three regional artists were considered to create proposals as recommended by the Art in Public Places Committee: Elizabeth Devereaux, Owen Gabbert, and Arthur Stern.

Also, a tile mural by artist Pat Carrillo is embedded in the pediment stucco of the existing building. After staff facilitated a meeting with the artist and Brown Construction (the design/build firm for this project), all concluded that the tile mural cannot be removed without damage to the artwork. APP Committee, SMAC and staff approved the deaccession of this mural. Artist Pat Carrillo has been invited to propose a new artwork for the site and consider incorporating a portion of her existing mosaic artwork.

The panel met to consider proposals on January 7, 2008 consisting of Dave Morgan, and Bonnie Slavin, City General Services Dept.; Parks Department Viancia Roberson, Recreation Supervisor George Sim Community Center; Field-Paoli Architects Mark Schatz, Principal Architect, Community Representatives Carl Pinkston, Army Depot RAC Member Booker Bryd, Constance Slider, Eric Banh; Artists Tony Natsoulas, Sam Tubiolo, Michael Riegel; and Art in Public Places Rep. Don Sronce. They recommended that both the glass proposal and new artwork proposed by Pat Carrillo be forwarded to the APP Committee for review. All site-specific artwork will be installed by December 2008. (See Attachment 1 and 3.)

2030 Del Paso Boulevard
Sacramento, California 95815-3022

Phone (916) 566-3992
Fax (916) 566-3996
www.sacculture.com
www.artcap.org

Policy Considerations: City ordinance requires that 2% of public construction projects be set aside for public artwork. The selection of artists by limited competition and invitation meets with APP Standard Policies and Procedures and the goal of site-specific public art.

Committee Action: APP Committee will review the proposals at its meeting on Wed. Jan. 9, 2008.

Environmental Considerations: The artists will provide engineering drawings and installation details to comply with all applicable codes, CEQA Guidelines 15301 and work within the parameters established by the City Department of General Services. APP staff and the artists will be required to attend planning, review, and coordination meetings with City project teams and will mitigate any safety, durability, and maintenance concerns.

Rationale for Recommendation:

Approval of these proposals will provide staff and program time and costs efficiencies as well as support the commissioning of local and regional artists. In addition, the invitation to artist Pat Carrillo is a fair and equitable exchange for the deaccession of her current artwork at the site. The public panel including representatives listed in Attachment 1, recommend the proposals in Attachment 5 for the project.

Financial Considerations:

Based on 2% of construction costs, \$79,000 is available for artwork and administrative costs for phase I of the project and \$35,000 is available for artwork and administrative costs for phase II. (See Attachment 2)

Emerging Small Business Development (ESBD): APP will make every effort to register eligible artists and vendors for the ESBD program.

Respectfully submitted,

Diana Walker-Smith
Art in Public Places Consultant

Linda Bloom
Art in Public Places Administrator

Attachments:

- 1- Background
- 2- Budget
- 3- Pat Carrillo Existing Mural
- 4- Site Plan
- 5- Proposals

Attachment 1

Background:

The Arts Plan was developed through meetings with Dave Mitchell, Division Manager, Children and Family Recreation, Viancia Roberson, Recreation Supervisor, Bonnie Slavin, Construction Program Manager, and Mark Schatz, project architect. The architect for the project is Field-Paoli Architects from San Francisco, California. The design/build firm is Brown Construction.

The arts plan recommended that an artist be selected for the Phase I development of the Sim Expansion utilizing an invitational process. The panel requested glass art for the front exterior of the building. As there is only one glass artist in APP Public Art Resource Registry) PARR, it was agreed that two additional regional artists be invited to develop proposals for this project with the panel recommending one artist for the commission. It was further recommended that Pat Carrillo be offered the Phase II commission. Pat developed a tile mural for the east exterior wall of the children's room.

The expansion and remodel of the George Sim project is scheduled to begin in March of 2008 with a completion date of December 2008. Due to the nature of the funding source for this project, all work, including fabrication and installation of artwork, must be completed by December 2008.

The panel met to consider proposals on January 7, 2008 consisting of Dave Morgan, and Bonnie Slavin, City General Services Dept.; Parks Department Viancia Roberson, Recreation Supervisor George Sim Community Center; Field-Paoli Architects Mark Schatz, Principal Architect, Community Representatives Carl Pinkston, Army Depot RAC Member Booker Bryd, Constance Slider, Eric Banh; Artists Tony Natsoulas, Sam Tubiolo, Michael Riegel; and Art in Public Places Rep. Don Sronce.

Attachment 2

Budget for George Sim Community Center Public Art Project – Phase I

\$11,850 - APP admin. including consultant
\$ 1,185- Maintenance
\$65,965 - Artwork, proposals

\$79,000 Total Available

Budget for George Sim Community Center Public Art Project – Phase II

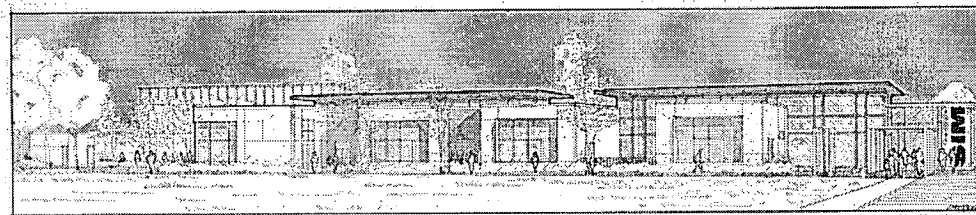
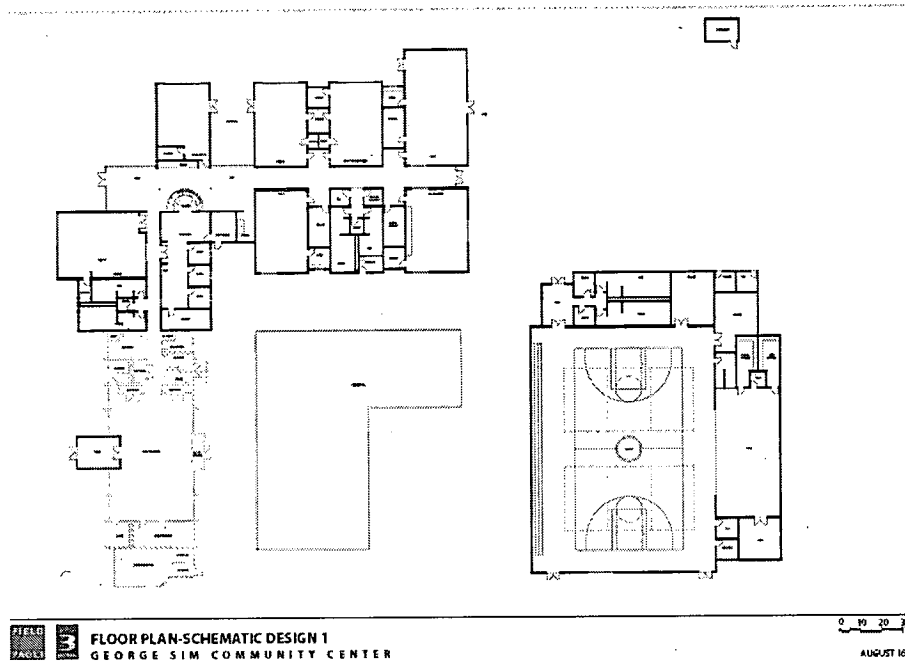
\$ 5,250 - APP admin. including consultant
\$ 525- Maintenance
\$29,225 - Artwork, proposals

\$35,000 Total Available

Attachment 3
Existing Mural by Pat Carillo



Site Plan Attachment 4



PERSPECTIVE VIEW
GEORGE SIM COMMUNITY CENTER

AUGUST 16, 2007

**Proposals
Attachment 5**

To be provided at meeting



SACRAMENTO METROPOLITAN ARTS COMMISSION

A City County Agency

January 9, 2008

**Honorable Chair and
Members of the Art in Public Places Committee**

Title: Approval of New Airport Terminal Art Budget

Board District: County District 1, 6900 Airport Blvd., Sacramento, CA 95837

Recommendation: Staff recommends approval of the New Airport Terminal Art Budget.

Contact: Rhyena Halpern, Executive Director Sacramento Metropolitan Arts Commission (SMAC)

Description/Analysis

Issue: A new terminal complex is planned for the Sacramento International Airport. This report recommends that 8 million dollars be allocated to art with the following recommendations:

1. \$5 million for public art, including a minimum of 25%-30% for integrated art;
2. \$1 million for APP/SMAC administration over the life of the project, with any unspent balance to be allocated to the creation of art at the New Airport Terminal;
3. \$2 million for an endowment to create and maintain an exhibition program and comprehensive conservation/maintenance and repair program at the Sacramento International Airport, with the following terms:
 - to be held as restricted funds, with a commitment to the endowment's preservation in perpetuity for the purpose of building and maintaining an Airport public art program,
 - annual interest payments to SMAC/APP for exhibition and conservation services in perpetuity, with all details to be worked out to the mutual agreement of both parties,

2030 Del Paso Boulevard
Sacramento, California 95815-3022

Phone (916) 566-3992
Fax (916) 566-3996
www.sacculture.com
www.artcap.org

- should the account accumulate unspent funds above an amount agreed upon by the County and SMAC (\$100,000 - \$300,000) a trigger would occur to allocate those dollars to APP for the creation of public art, thereby ensuring the growth of the Airport collection.,
- the location of the endowment will be determined pending further discussion between SMAC and the County and must ensure the interests of both agencies are met, including the County's interest in how the funds generated by the endowment are administered; and APP's interest in ensuring that the endowment is maintained in perpetuity and will not be eroded, and that the funds will not be used for other purposes.
- future Airport art programs would add to the endowment to ensure adequate funding as the program grows over time,
- above terms are subject to County legal counsel's confirmation that use of these funds is consistent with the County ordinance.

Policy Considerations: County ordinance states that unless a different amount is directed by the Board of Supervisors, a budget allowance of two percent of the total construction costs of the eligible projects shall be allocated for works of art. A final allowance for artwork for eligible construction projects shall be approved by the Board of Supervisors after reviewing the recommendations of the Sacramento Metropolitan Arts Commission and the County Executive.

Commission/Committee Action: APP Committee will review the recommendation for the proposed Airport Art Budget at its meeting on January 9, 2008. The recommendation will then be reviewed by the Commission on January 14, 2008.

Environmental Considerations: None

Rationale for Recommendation: SMAC staff met with County Executive and Airport Director to create a budget that met the needs of both agencies. SMAC staff sought input from the APP committee at three regular and one special APP Committee meetings and at an Arts Commission meeting.

The rationale for decreasing the percentage allocated to art from 2% of construction costs to 1.7% includes:

1. consideration of the County ordinance which gives the County Board of Supervisors the flexibility to approve art budgets at 2% of construction costs or what it deems appropriate;
2. the recommendations of the Airport executive staff which support the 1.7% allocation to art;
3. the economic climate;
4. the unprecedented size of the airport construction budget;

5. the proposed endowment improves APP's sustainability as a self-supporting unit in perpetuity;
6. the proposed endowment increases the amount of ongoing funding for public art in perpetuity.

Financial Considerations: The total Airport construction budget is \$1.2 billion. Hard costs of eligible construction total approximately \$460 million. 2% of \$460 million is 9.2 million. The 8 million dollar recommendation is 1.7% of \$460 million dollar estimated construction budget. Refer to attachment 1.

Emerging Small Business Development (ESBD): None

Respectfully submitted by, _____
Rhyena Halpern
Executive Director

Table of Contents:

Pg 1-3 Report

Attachments

1 Pg Airport Budget Chart.

Memorandum

December 7, 2007

To: Hardy Acree, Director, Sacramento International Airport

From: John Nicolaus, Chairperson, on behalf of the
Art in Public Places Committee
Sacramento Metropolitan Arts Commission

Re: **Budget for Public Art at Airport Expansion**

At the special APP Committee meeting on November 28, 2007, a discussion of the airport art program ensued with the following questions and concerns emerging from the group. As committee chair, I have been charged with conveying the committee's thoughts and concerns. We respectfully request that these issues be taken under advisement and that as many answers as possible are provided.

1. **Construction Budget Review.** The APP Committee respectfully requests to review (in round numbers) the overall airport expansion budget. Our concern is that the percent of the budget for art may not be in alignment with ineligible costs such as civil improvements, infrastructure costs, etc. Further, the Committee is concerned that the percent for art budget does not take into consideration change orders, cost escalations, and contingencies. Additionally, we would like to compare the actual number for the percent for art (based on eligible construction costs) with the proposed \$8 million for art.

Response: See attached report that was provided to the SMAC.

2. **Allocation of overall art budget.** The Committee wants to consider exploring a reallocation of the \$8 million, with perhaps more than the proposed \$5 million being dedicated to actual public art.

Response: Noted.

3. **Endowment.** The Committee intuitively feels that the allocation of \$2 million to an endowment is too high. What rationale was used to determine this amount? Further, concern was raised by some Committee members over where the endowment would be housed, and that it needs to remain unavailable for any other use during lean times for other municipal budgets. Additionally, what investment vehicle will be used for the endowment?

Response: With input from SMAC staff we determined an annual amount of between \$75,000 - \$100,000 was needed to adequately support this art acquisition program. Given the County's historical pool of funds rate of return of approximately 4.5% it takes an estimated \$2,000,000 to generate the revenues necessary.

4. **Endowment Administration.** The Committee would like information on the performance of other endowments administered by the City and County and we want to explore other administrative means, such as the Sacramento Regional Foundation, as possible endowment administrators.

Response: Who administers the endowment remains a subject for further discussion. The County does not support a third party administering the fund because of the added administrative cost.

5. Conservation, Maintenance & Repair. What are the airport and APP currently spending to maintain the existing art on an annual basis? How do other comparably sized airports manage and maintain their collections? Will maintenance funds for this project be used for previously installed airport projects? If so, how much? While the Committee feels that this aspect of the art program is crucial, we believe that it requires more study and a more informed approach before funds are fully locked in or dedicated specifically for this purpose.

Response: The Airport currently budgets \$20,000 - \$25,000 in our annual operations budget to maintain the existing airport art. Funds from the endowment are viewed as supplement to existing operating funds. As for how other airports manage and maintain their collections, it is our impression that the Project Manager hired by SMAC staff is currently conducting some in depth surveys of other airports.

6. Rotating Exhibitions. Has a budget for this item been developed? The Committee feels that flexibility in the allocation of these funds will be important as an exhibition plan is created. Again, we believe it is important not to be locked into a set number prior to the establishment and adoption of an Arts Plan that includes an exhibition component.

Response: Funds from the endowment will be used to support the new art program. If that includes a rotating exhibition program then APP would work with Airports to determine the appropriate level of funding needed from the endowment to support this.

7. Concern Over Precedent Setting. We are respectful and reflective of the conversations County airport staff have had with our committee and its representatives. We understand the rationale presented relative to the establishment of the \$8 million for public art. We are, however, deeply concerned that by not adhering to the 2% ordinance, while mindful of the ordinance's out clause relative to Supervisors' discretion, that a precedent is being set for other projects large and small which would allow them not to be subject to the 2% for art ordinance, or that future negotiations may in fact weaken the ordinance.

While we have heard and we understand County staff's personal support and appreciation for public art, we are mindful that staff, decision makers, electeds and volunteers such as ourselves change over time. The consistent application of the ordinance, as well as the consistent treatment of projects and project proponents, is key to the longevity, integrity and validity of the ordinance.

Response: The proposed budget recommendation is consistent with the County Ordinance.

8. Long Term Aspects of Airport Expansion. We are mindful of the phased nature of the construction of airport modifications. We understand that the proposed hotel and garage will be several years in the future, and we respectfully request that a separate percent for art budget be set for those projects when the design phase commences for them.

Response: The hotel is being constructed at the same time as the terminal building. The garage will follow completion of the new terminal and demolition of the existing terminal B. If it is the desires of the Commission to delay funding the garage art project we would reduce the budget accordingly. We think there is value to planning the garage in concert with the terminal building.

9. Makeup Funds for Public Art Charged on a Per-Passenger Basis. In an effort to generate additional funds for art which would not be passed on to airline tenants or the County, could an "art surcharge" be paid by each passenger? For instance, we could look at a total art budget of 2% of applicable costs, dividing that number by the number of passengers over a given period of time (that perhaps coincides with the life of the bond or other financing mechanism being used to fund construction), and apply that number towards art, conservation, exhibits, endowment, etc. Additional monies could be raised, tenants and the County would not be directly impacted, and more public art could be installed.

Response: Local governments are prohibited by federal law from establishing head taxes. Only congress can establish such laws and have already done so through the passenger facility charge (PFC) whose funds are restricted for use on airport safety and capacity projects after approval by the airlines and the Federal Aviation Administration. Art is not eligible under existing safety and/or capacity criteria.

10. **Airline Contributions.** The Committee requests a breakdown of budgets from the airlines in order to support their claim that they "cannot afford" more for an arts budget. What figures are they using on which to base this position?

Response: Please contact the airlines in question for copies of their budgets.

11. **Integrated Art and Functional Components of the Design.** Have detailed budgets been developed for components of the design where art could be integrated? Will lighting of art be a part of the art budget or part of the electrical budget? The Committee is concerned that money that could be used for actual art will need to be used for "structural" components such as building systems, electrical systems, and others that will be necessary to accommodate art, but not result in actual visible artworks. Our hope is that the support systems for public art will not be charged to the public art budget.

Response: Integrated art is considered in the art program at approximately 25%-30%. Any construction cost over and above standard construction required to support integrated art will be considered part of the art budget.

12. **Comparison of Previous APP Projects.** Provide a list of other projects in the County where 2% of the construction budget was dedicated to art. For comparison purposes, after adjusting for inflation, how do those projects compare with the one contemplated for the airport expansion? The most recent example we can suggest is Terminal A at the airport, and the amount spent for art on a square foot basis relative to construction costs of the overall project.

Response: The County ordinance requires that budgets be determined based on hard construction cost or another amount as determined by the Board, not based on a projects square footage

Thank you in advance for your consideration of these issues. We respectfully request that you respond by December 17, so that the Committee can reflect on your comments and discuss them at our January meeting.