

10



CITY OF SACRAMENTO

DEPARTMENT OF PUBLIC WORKS

ENGINEERING

CITY MANAGER'S OFFICE
RECEIVED
FEB 13 1985

Administration, Rm. 300	(916) 449-5307
Architecture, Rm. 302	(916) 449-5307
Civil Engineering, Rm. 207	(916) 449-5281
Construction, Rm. 207	(916) 449-5281
Electrical Engineering, Rm. 304	(916) 449-5287
Real Estate, Rm. 300	(916) 449-5307
Traffic Engineering, Rm. 300	(916) 449-5307

February 11, 1985

City Council
Sacramento, California

Honorable Members In Session:

SUBJECT: Approval of Final Subdivision Map for Woodbine Acres,
Lots 45 and 56 Camellia Acres

SUMMARY

It is requested that the City Council adopt a Resolution approving the final Subdivision Map for Woodbine Acres, Lots 45 and 56 Camellia Acres, located on the east side of Woodbine Avenue between Wah Avenue and Hing Avenue. Adoption of the Resolution is recommended.

BACKGROUND INFORMATION

On December 4, 1984, the City Council approved a tentative Subdivision Map by adopting Resolution No. 84-998.

All conditions and stipulations set forth in the staff subdivision report have been complied with and all improvements have been installed and accepted by the Director of Public Works. The final Subdivision Map is now being presented for final approval.

FINANCIAL DATA

All costs pertaining to the subdivision are being paid by the subdivider.

APPROVED
BY THE CITY COUNCIL


FEB 19 1985

OFFICE OF THE
CITY CLERK

RECOMMENDATION

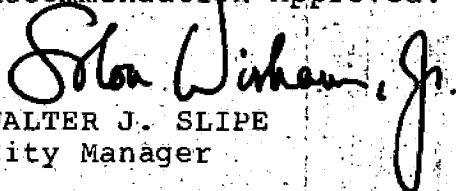
It is recommended that the attached Resolution approving the final Subdivision Map be adopted.

Respectfully submitted,



THOMAS M. FINLEY
Engineering Division Manager

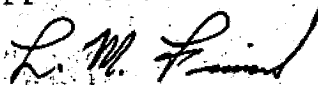
Recommendation Approved:



For: WALTER J. SLIPE
City Manager

BF:jd
Attachment

Approved:



FOR MELVIN H. JOHNSON
Director of Public Works

February 19, 1985
District No. 7

RESOLUTION NO. 85-114

Adopted by The Sacramento City Council on date of

FEBRUARY 19, 1985

APPROVING FINAL SUBDIVISION MAP FOR WOODBINE ACRES, LOTS 45 AND 56 CAMELLIA ACRES (P-84-350)

WHEREAS, THE COUNCIL OF THE CITY OF SACRAMENTO FINDS AND DETERMINES AS FOLLOWS:

A. The final Subdivision Map for Woodbine Acres, Lots 45 and 56 Camellia Acres, together with provisions for its design and improvement, is consistent with the General Plan of the City of Sacramento and the 1984 Airport Meadowview Community Plan.

B. The final Subdivision Map is in substantial compliance with the previously approved tentative map.

NOW, THEREFORE, BE IT RESOLVED BY THE COUNCIL OF THE CITY OF SACRAMENTO AS FOLLOWS:

- 1. The final Subdivision Map of Woodbine Acres, Lots 45 and 56 Camellia Acres, be, and the same is hereby approved subject to the execution by all parties for that subdivision.
- 2. All offers of dedication shown on said map are hereby accepted.

MAYOR

ATTEST:

CITY CLERK

APPROVED
BY THE CITY COUNCIL

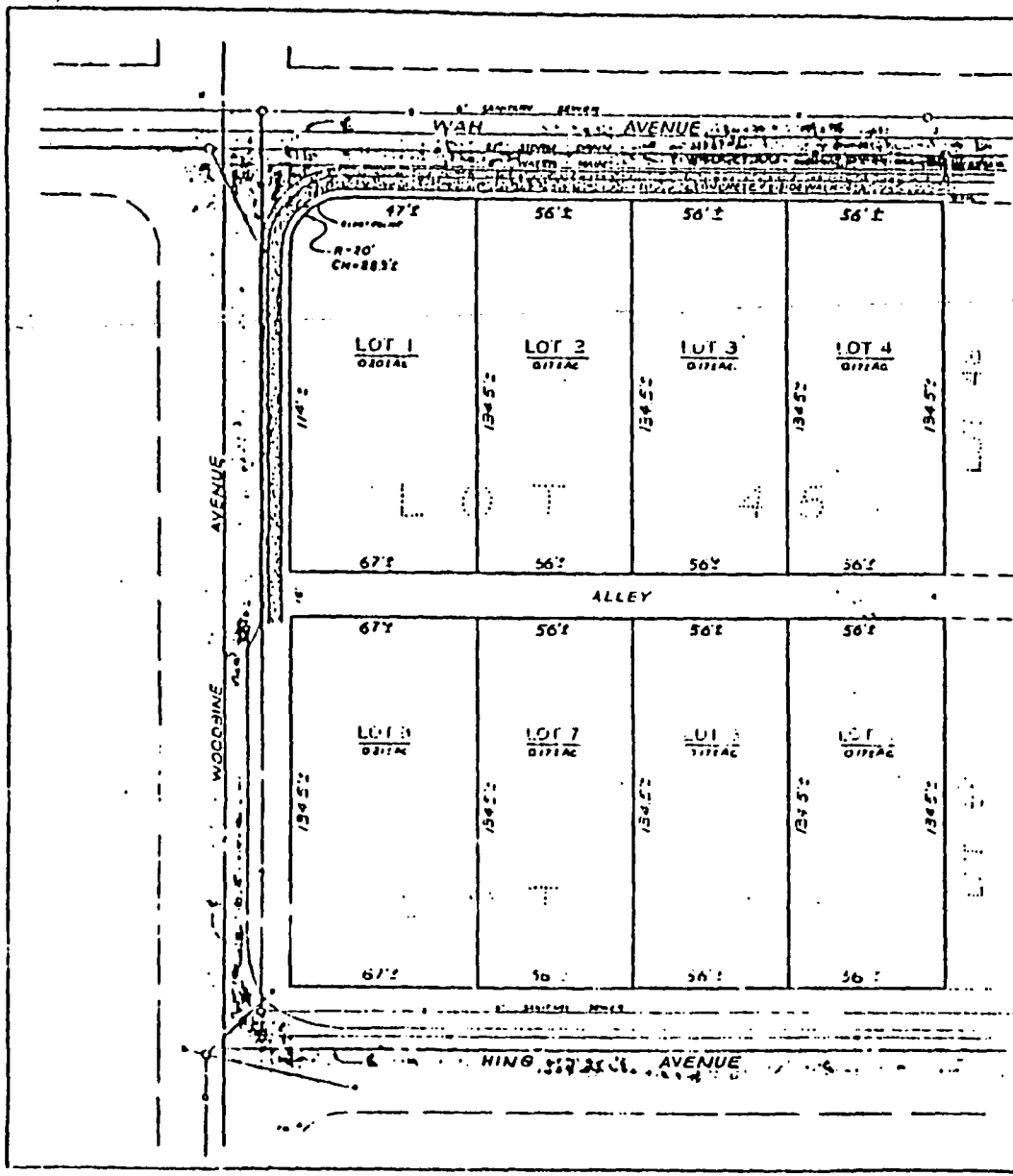
FEB 19 1985

OFFICE OF THE
CITY CLERK

95E-782

10-25-84

No. 11



TENTATIVE MAP
 UNNAMED SUBDIVISION
 LOTS 45 & 56, CAMELLIA ACRES
 CITY OF SACRAMENTO, CALIFORNIA
 SEPTEMBER, 1984 SCALE: 1" = 20'

RECORD OWNER / SUBDIVIDER
 ALPHA ENGINEERS
 2420 RICHMOND DRIVE
 SAN FRANCISCO, CALIFORNIA 94107
 LINDA M. BOSTON
 818 ATANK COURT
 SANTEE, CALIFORNIA 95226

SURVEYOR
 FLORENCE STRAIN, LAND SURVEYOR
 3602 210 STREET
 SACRAMENTO, CALIFORNIA 95816
 (916) 491-1100

ASSESSOR'S PARCEL NUMBER
 01-013-14-108

EXISTING ZONING / USE
 UNZONED / VACANT

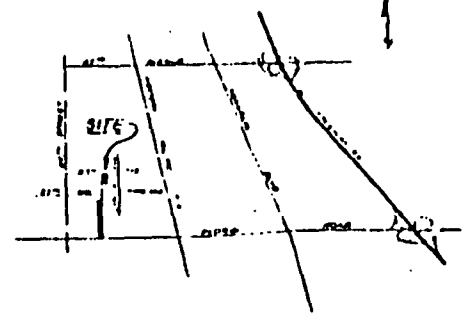
PROPOSED ZONING / USE
 R-1 / SINGLE FAMILY RESIDENCE

PROPOSED SEWAGE / DRAINAGE DISPOSAL
 EXISTING PUBLIC SEWERS / GRAVE

PROPOSED WATER SUPPLY
 EXISTING PUBLIC WATER MAINS

SCHOOL DISTRICT
 SACRAMENTO CITY UNIFIED

VICINITY MAP
 NO SCALE



P 84300

10