



3.11

**DEPARTMENT OF
PUBLIC WORKS**

DEVELOPMENT SERVICES
DIVISION

TERENCE W. MOORE
DIVISION MANAGER

**CITY OF SACRAMENTO
CALIFORNIA**

927 TENTH STREET
ROOM 100
SACRAMENTO, CA
95814-2795

916-449-8210

APPROVED
BY THE CITY COUNCIL

MAR 27 1990

OFFICE OF THE
CITY CLERK

AG 90-013

March 27, 1990

City Council
Sacramento, California

Honorable Members In Session:

SUBJECT: Kiavah Heights Unit No. 2 (P-89119) - Approval of Final Subdivision Map and Agreement

SUMMARY

Adoption of a resolution approving a Final Subdivision Map and Agreement for Kiavah Heights Unit No. 2, located at the northwest corner of Main Avenue and Pinedale Avenue, is recommended.

BACKGROUND

On September 27, 1989, the City Council approved a Tentative Subdivision Map by adopting Resolution No. 89-739.

All conditions in the staff subdivision report have been met and the Final Subdivision Map is presented for approval.

FINANCIAL DATA

All subdivision costs are being paid by the subdivider, SCB Investments, a general partnership.

POLICY CONSIDERATION

None.

MBE/WBE EFFORTS

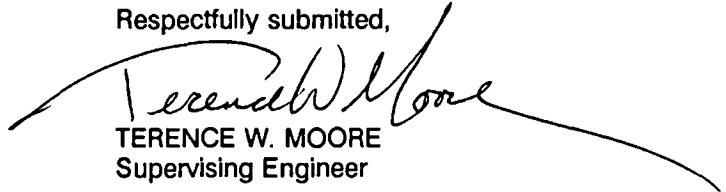
None.



RECOMMENDATION


It is recommended that the attached resolution approving the Final Subdivision Map and Agreement be adopted.

Respectfully submitted,



TERENCE W. MOORE
Supervising Engineer

Recommendation Approved:



WALTER J. SLIFE
City Manager

SMP:rn
DS1-25.A
03.2790.1

Approved:



MELVIN H. JOHNSON
Director of Public Works

March 27, 1990
District No. 2

Attachment

CONTACT PERSON

Robert Jones, Senior Engineer, (916)449-8210

RESOLUTION NO. 90-224

ADOPTED BY THE SACRAMENTO CITY COUNCIL

ON DATE OF _____

APPROVED
BY THE CITY COUNCIL

MAR 27 1990

OFFICE OF THE
CITY CLERK

APPROVING FINAL SUBDIVISION MAP AND
AGREEMENT FOR KIAVAH HEIGHTS UNIT NO. 2 (P-
89119)

WHEREAS, THE COUNCIL OF THE CITY OF SACRAMENTO FINDS AND DETERMINES AS FOLLOWS:

- A. The Final Subdivision Map for Kiavah Heights Unit No. 2, located at the northwest corner of Main Avenue and Pinedale Avenue, with provisions for its design and improvement, is consistent with the North Sacramento Community Plan.
- B. The Final Subdivision Map is in substantial compliance with the previously approved tentative map.

NOW, THEREFORE, BE IT RESOLVED BY THE COUNCIL OF THE CITY OF SACRAMENTO AS FOLLOWS:

- 1. The Final Subdivision Map for this project is hereby approved subject to the execution by all parties of the Subdivision Improvement Agreement for that subdivision.
- 2. All offers of dedication shown on said map are hereby accepted subject to the improvement thereof required by the Subdivision Agreement.
- 3. The City Manager and City Clerk be authorized and directed to execute on behalf of the City of Sacramento that certain Subdivision Improvement Agreement and Abstract thereof between the City and SCB Investments, a general partnership to provide for the subdivision improvements required by the Subdivision Map Act and Chapter 40 (Subdivision Regulations) of the Sacramento City Code.
- 4. The Real Estate Supervisor is authorized and directed to record the above-mentioned agreement in the official records of Sacramento County.

ATTEST:

MAYOR

CITY CLERK

DS1-25.A
03.2790.1

FOR CITY CLERK USE ONLY

RESOLUTION NO.: _____

DATE ADOPTED: _____



SCALE 1"=400'

GLENWOOD PARK UNIT NO. 1

SHERBERTS 227-022-08

DONAHOO 227-020-84

DONAHOO 227-022-10

DONAHOO 227-022-11

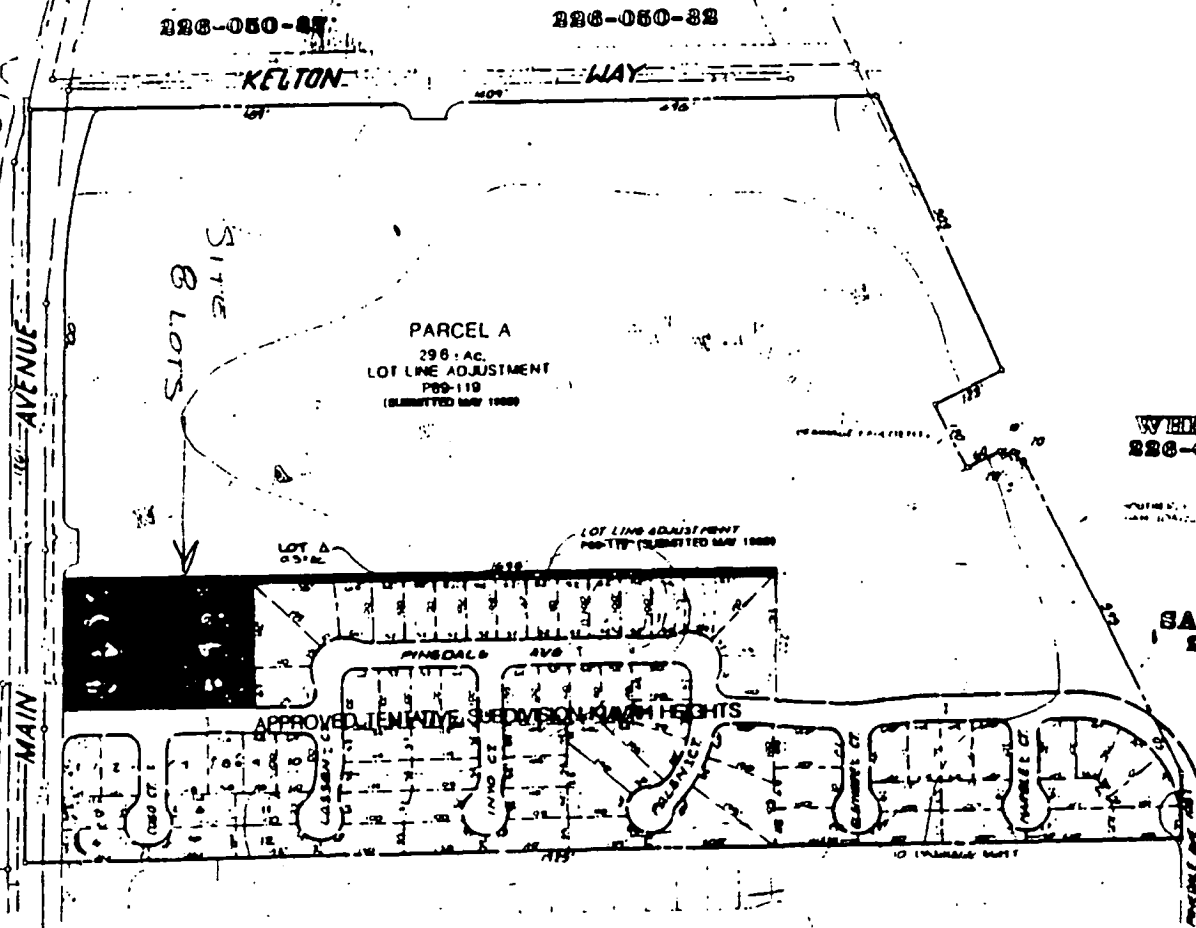
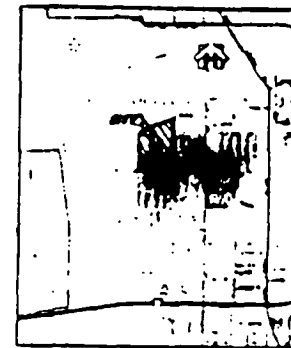


EXHIBIT A



VICINITY MAP

- 1. ALL DISTANCES ARE IN FEET AND DECIMALS THEREOF.
- 2. ALL CORNERS ARE TO BE BENCHMARKED BY THE CITY ENGINEER.
- 3. ALL DISTANCES ARE TO BE MEASURED ALONG THE CENTERLINE OF THE ROAD.
- 4. ALL DISTANCES ARE TO BE MEASURED ALONG THE CENTERLINE OF THE ROAD.
- 5. ALL DISTANCES ARE TO BE MEASURED ALONG THE CENTERLINE OF THE ROAD.
- 6. ALL DISTANCES ARE TO BE MEASURED ALONG THE CENTERLINE OF THE ROAD.
- 7. ALL DISTANCES ARE TO BE MEASURED ALONG THE CENTERLINE OF THE ROAD.
- 8. ALL DISTANCES ARE TO BE MEASURED ALONG THE CENTERLINE OF THE ROAD.
- 9. ALL DISTANCES ARE TO BE MEASURED ALONG THE CENTERLINE OF THE ROAD.
- 10. ALL DISTANCES ARE TO BE MEASURED ALONG THE CENTERLINE OF THE ROAD.

TENTATIVE MAP

NO.	DESCRIPTION	DATE	BY	CHECKED BY	DATE	BY	DATE	REVISION

morton & pitalo, inc.
CIVIL ENGINEERING
PLANNING SURVEYING

REVISED 6/16/88
TENTATIVE SUBDIVISION MAP
KIAH HEIGHTS ADDITION



OFFICE OF THE
CITY CLERK

OPERATION SERVICES

CITY OF SACRAMENTO
CALIFORNIA

CITY HALL
ROOM 304
915 I STREET
SACRAMENTO, CA
95814-2671

916-449-5426

April 2, 1990

SCB Investments
3434 Marconi Avenue Ste C
Sacramento CA 95821

On March 27, 1990, the Sacramento City Council adopted Resolution No. 90-224 authorizing the execution of Agreement No. 90-013 regarding final subdivision map for Kiavah Heights Unit No. 2.

Enclosed, for your records, is one fully certified copy of said agreement and authorizing resolution.

Sincerely,

Valerie A. Burrowes
City Clerk

mls/3.11

Enclosures

cc: Public Works
Risk Management

