



3.3

RECEIVED  
CITY CLERKS OFFICE  
CITY OF SACRAMENTO  
JUN 7 9 22 AM '90

**DEPARTMENT OF  
PUBLIC WORKS**

**CITY OF SACRAMENTO  
CALIFORNIA**

927 TENTH STREET  
ROOM 100  
SACRAMENTO, CA  
95814-2795

DEVELOPMENT SERVICES  
DIVISION

916-449-8210

TERENCE W. MOORE  
DIVISION MANAGER

June 12, 1990

**APPROVED**  
BY THE CITY COUNCIL

JUN 12 1990

OFFICE OF THE  
CITY CLERK

City Council  
Sacramento, California

Honorable Members In Session:

**SUBJECT:** Parcel Map Entitled "Parcel 15, 105 P.M. 29" (P-89371) - Approval of Final Parcel Map

**SUMMARY**

Adoption of a resolution approving a Final Parcel Map entitled "Parcel 15, 105 P.M.29," located at the south side of Rovana Circle, 1200 feet west of Florin-Perkins Road, is recommended.

**BACKGROUND**

On January 2, 1990, the City Council approved a Tentative Parcel Map by adopting Resolution No. 90-018.

All conditions in the staff subdivision report have been met and the Final Parcel Map is presented for approval.

**FINANCIAL DATA**

All subdivision costs are being paid by the subdivider, Northgate Partnership, a California General Partnership and O.K. and B., a General Partnership.

**POLICY CONSIDERATION**

Pursuant to Sacramento City Code, Article V, Chapter 40.515, and Government Code Section 66458, the City Council may, by resolution, approve final maps and parcel maps. The map presented conforms to all the requirements of the Government code and Chapter 40 applicable at the time of conditional approval of the Tentative Map. The map is, therefore, recommended for approval.

City Council  
Final Parcel Map (P-89371)  
June 12, 1990  
Page 2

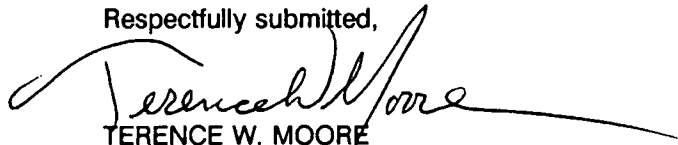
**MBE/WBE EFFORTS**

None.

**RECOMMENDATION**

It is recommended that the attached resolution approving the Final Parcel Map be adopted.

Respectfully submitted,



TERENCE W. MOORE  
Supervising Engineer

Recommendation Approved:



WALTER J. SLIPE  
City Manager

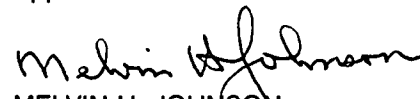
JL:rn  
DS2-11.A  
05.2990.1

Attachment

**CONTACT PERSON**

Glenn Marshall, Associate Civil Engineer  
449-5517

Approved:



MELVIN H. JOHNSON  
Director of Public Works

June 12, 1990  
District No. 6

**RESOLUTION NO.** 96-449

ADOPTED BY THE SACRAMENTO CITY COUNCIL

ON DATE OF \_\_\_\_\_

APPROVING FINAL PARCEL MAP ENTITLED  
"PARCEL 15, 105 P.M. 29" (P-89371)

**APPROVED**  
BY THE CITY COUNCIL  
JUN 12 1990  
OFFICE OF THE  
CITY CLERK

WHEREAS, THE COUNCIL OF THE CITY OF SACRAMENTO FINDS AND DETERMINES AS FOLLOWS:

- A. The Final Parcel Map for "Parcel 15, 105 P.M. 29," located at the south side of Rovana Circle 1200 feet west of Florin-Perkins Road, with provisions for its design and improvement, is consistent with the City General Plan and the 1986 South Sacramento Community Plan.
- B. The Final Parcel Map is in substantial compliance with the previously approved tentative map.

NOW, THEREFORE, BE IT RESOLVED BY THE COUNCIL OF THE CITY OF SACRAMENTO AS FOLLOWS:

- 1. The Final Parcel Map is hereby approved.
- 2. All offers of dedication shown on said map are hereby accepted.

ATTEST:

\_\_\_\_\_  
MAYOR

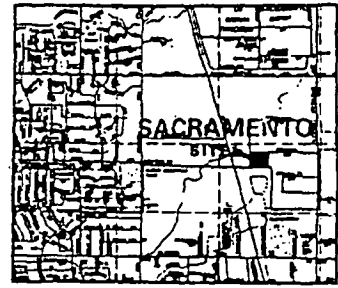
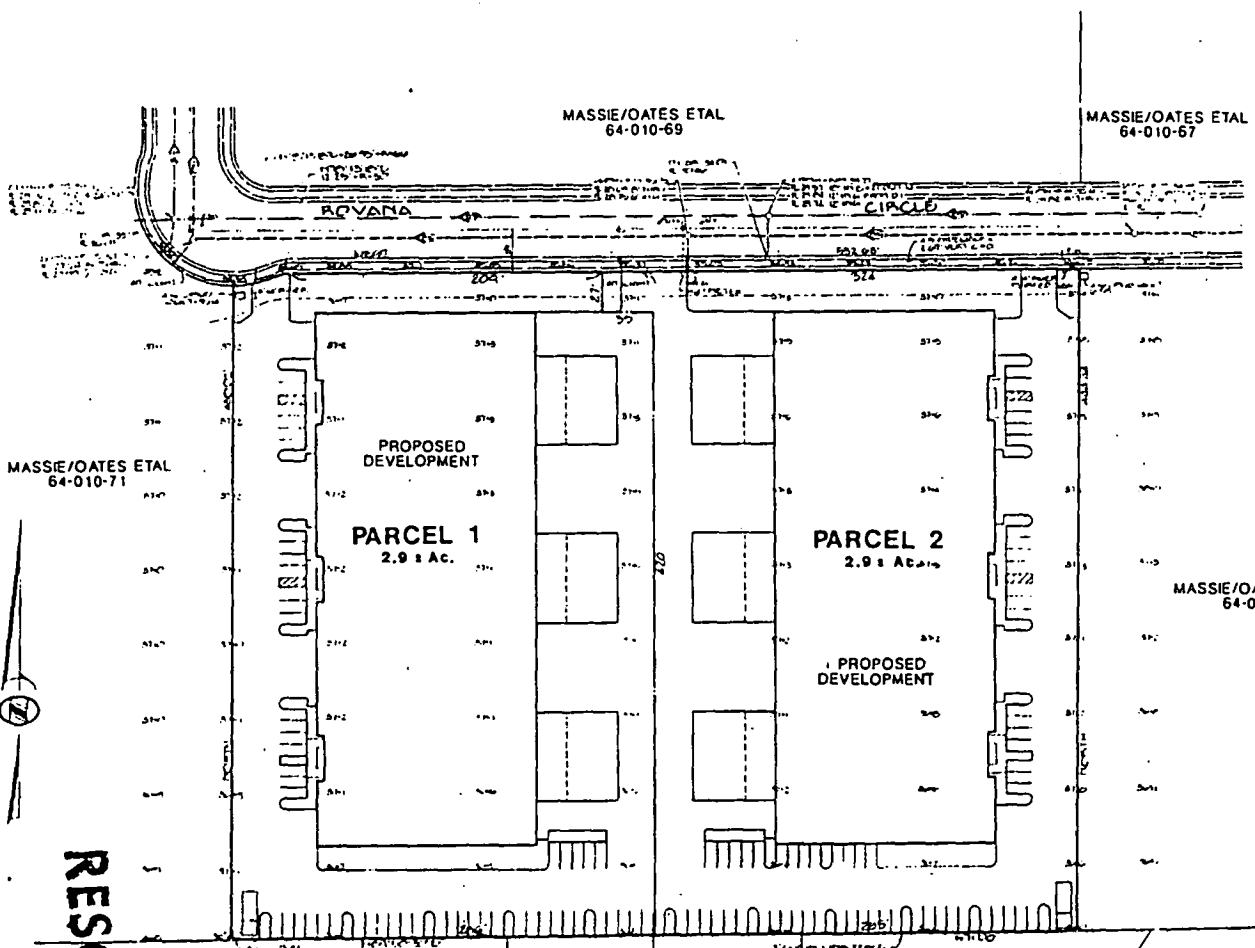
\_\_\_\_\_  
CITY CLERK

DS2-11.A  
05.2990.1

**FOR CITY CLERK USE ONLY**

RESOLUTION NO.: \_\_\_\_\_

DATE ADOPTED: \_\_\_\_\_



- OWNER/OWNER'S
- MASSIE/OATES ETAL  
8377 LARSON COURT  
SACRAMENTO, CA 95828
- OWNER/ENGINEER
- MORTON & PITALO, INC.  
1430 W. BOND ST. #200  
SACRAMENTO, CA 95816
- ASSessor'S PARCEL ID.
- 064-010-72
- AREA
- 5.8 AC
- ZONING
- PD-15
- ELECTRICITY
- MAP
- 645
- PG 8 E
- TITLE WORK
- PRICE PER WELL
- STORM DRAINAGE
- SEWER SERVICE
- CITY
- SCHOOL DISTRICT
- PARKS & RECREATION
- ETC. (SEE LISTING)

MASSIE/OATES ETAL  
64-010-71



RESOLUTION

JAN 02 1990

CUTTING 64-100-31    FLORIN NORTH 64-100-13    FLORIN NORTH 64-100-14    HERBERT 64-100-15    FOX 64-100-16    FOX 64-100-17

EXHIBIT A

NO.	DESCRIPTION	APPROVED DATE	DISK NO.	BENCH MARK	COMPUTED	MORTON & PITALO, INC. CIVIL ENGINEERING · PLANNING · SURVEYING	TENTATIVE PARCEL MAP PARCEL 15 OATES INDUSTRIAL PARK OF SACRAMENTO	DATE
			SCALE	ELEV.	DESIGNED			SEPT 1989
			NO. 11, 52		DRAWN	CITY OF SACRAMENTO		BY
			VERT. 1" = 50'	PROJ. ENGR.				FILE NO. 5204

90-018

7