



~~3 B~~ 2.2B

CITY OF SACRAMENTO
CALIFORNIA

DEPARTMENT OF
PUBLIC WORKS

OFFICE OF THE DIRECTOR

CITY HALL
ROOM 207
915 I STREET
SACRAMENTO, CA
95814-2673

916-449-5283

May 22, 1991

ADMINISTRATION
916-449-8747
FAX 916-449-5573

City Council
Sacramento, California

Honorable Members in Session:

**SUBJECT: PROPOSED SOLID WASTE AND LAWN AND GARDEN SERVICES FEE
ADJUSTMENTS FOR 1991-92**

SUMMARY

This report recommends the adoption of rate increases for solid waste services in fiscal year 1991-92 to be effective July 1, 1991. It is recommended that residential rates for solid waste and lawn and garden services be increased by 15%. It is further proposed that rates be adjusted to reflect the true costs of lawn and garden services, removing the existing subsidy of that program from solid waste charges.

BACKGROUND

The Solid Waste Fund is an enterprise fund which is financially responsible for the activities of waste reduction and recycling, collecting and disposing of solid waste, sweeping streets, and abating litter throughout the City. These functions are performed by the operational units of Refuse Collection and Landfill Operations (Solid Waste Division), and Street Sweeping and Garden Refuse Collection (Street Division). In addition, the Solid Waste Division manages the City's Source Reduction and Recycling, Neighborhood Clean-up, Community Clean-up and Hazardous Materials Program. The Source Reduction and Recycling function includes the City's curbside recycling and composting programs.

In February 1991 the City Council adopted a Lawn and Garden Service Fee to cover the costs associated with garden refuse collection, garden refuse disposal, and street sweeping in residential areas. This fee was implemented April 1, 1991 and the Garden Refuse Excise Tax was repealed. This action has two important effects on the FY 1991-92 rates: 1) a revenue loss resulting from the adoption of the Lawn and Garden Service Fee must be remedied and, 2) the true costs of the Lawn and Garden Services versus Solid Waste Services can be addressed.

With the adoption of the fee and repeal of the tax, certain customer classes are no longer charged for services which they do not receive. The elimination of this subsidy resulted in a \$74,000 loss in revenue in FY 1990-91 and a projected \$340,000 loss in FY 1991-92. In order to maintain existing service levels, these costs must be

redistributed to those who receive the services.

At the time of the adoption of the Lawn and Garden service fee, an adjustment was made between the new fee and Solid Waste service charges in order to address the subsidization of the garden refuse program by solid waste charges. The FY 1991-92 rates further remedy this situation.

FINANCIAL DATA

The proposed FY 1991-92 Solid Waste fund budget contains \$25.96 million in budgeted expenditures. The proposed rate adjustments will fund existing programs and services at current service levels. In addition, the budget includes augmentations for the expansion of the curbside recycling program, the hazardous materials program, and the expansion of the Capital Improvement Program to provide for the implementation of Source Reduction and Recycling Planning and Landfill Closure. In addition, the increased revenue is required to support new and increasing costs of landfill tipping fees.

The components of the proposed Solid Waste Fund increases are summarized below.

TABLE ONE: COMPONENTS OF SOLID WASTE RATE INCREASE			
	\$ Cost (thousands)	\$ Impact - Typical Residential Rate	Portion of Residential Rate Impact
Residential Recycling Phase 2	\$569	\$0.49	4.0%
Tipping Fees for Garden Refuse	\$491	\$0.43	3.4%
Household Hazardous Waste Program	\$193	\$0.17	1.3%
Other Operating Increases	\$561	\$0.34	2.7%
Growth In Accounts	<\$521 >	<\$0.31 >	<2.5% >
Capital Improvement Program - Increase over prior year	\$758	\$0.46	3.7%
Loss from Adoption of Lawn & Garden Fee	\$296	\$0.18	1.4%
Increase to Maintain Adequate Contingency	\$198	\$0.12	1.0%
TOTAL		\$1.87	15.0%

The typical residential customer will now pay for the following services:

TABLE TWO: WHAT THE TYPICAL HOMEOWNER PAYS FOR	
Garbage Collection	\$5.79
Garbage Disposal	\$1.46
Nuisance Abatement	\$0.19
Neighborhood Clean-up/Community Clean-up	\$0.65
Household Hazardous Waste Collection	\$0.21
Curbside Recycling	\$1.03
TOTAL SOLID WASTE SERVICES	\$9.33
Garden Refuse	\$4.52
Street Sweeping	\$0.50
TOTAL LAWN AND GARDEN SERVICES	\$5.02
TOTAL Autolift plus Lawn & Garden	>\$14.35

Public Works staff has researched the costs of various programs and analyzed the distribution of these costs to the various rate categories. This analysis reveals the need for certain equity adjustments including:

- Fees for each additional Autolift Can need to be increased an additional 9% for a total increase of 24% in order to reflect the true costs of this service.
- Lawn and Garden Service Fees have been adjusted to reflect the true costs of these services and eliminate the subsidization of these programs from Solid Waste Service Fees. The combined rate increase of these two fees to the typical homeowner (autolift service plus lawn and garden) will be 15%.
- Residential bin rates are adequate to cover costs at current rates. No increases are required for these rates.
- Commercial Bin rates are substantially low compared to the cost of service. It is proposed that these rates be increased an average of 37% in order to better cover the true costs of providing the service.

The effect of the proposed fee adjustments on the monthly cost for a typical resident is shown below:

TABLE THREE: TYPICAL SOLID WASTE SERVICE CHARGES				
Service Type	Current Fee	Proposed Fee	\$ Change	% Change
Autolift Container (90 gal.)	\$8.34	\$9.33	\$0.99	11.9%
Lawn & Garden Service	\$4.14	\$5.02	\$0.88	21.3%
TOTAL Autolift plus Lawn & Garden	\$12.48	\$14.35	\$1.87	15.0%
Additional Autolift Can (each)	\$5.01	\$6.21	\$1.20	24.0%

The proposed fee structure for all rates is identified in the attached Attachment A. A comparison of the proposed rates with those of other jurisdictions is provided in Attachment B.

POLICY CONSIDERATIONS

The adoption by resolution of the City Council of fees and charges for utility services is provided by Sacramento City Code Section 64.141. Matters regarding Garden Refuse (Lawn and Garden) Services are covered by Chapter 19, Article IV of the City Code. The proposed rate adjustments will fund existing programs and services at current service levels. In addition, the increase will allow for the expansion of the curbside recycling program, the hazardous materials program, and the expansion of the Capital Improvement Program to provide for the implementation of Source Reduction and Recycling Planning and Landfill Closure. In addition, the increased revenue is required to support new and increasing costs of landfill tipping fees.

Attachment C provides a listing in priority order of proposed augmentations and current programs that could be deleted in order to reduce the proposed 15% rate increase.

As the Council is aware, the City is currently addressing the future of the City's Solid Waste disposal, including the eminent closure of the City landfill and the consideration of various disposal alternatives including Direct Haul. Because of the range of possible scenarios on this issue, the additional costs which will occur have not been included in this proposed budget nor included in the proposed rate increase. Consequently, an additional Solid Waste Service rate increase will likely be necessary in the near future.

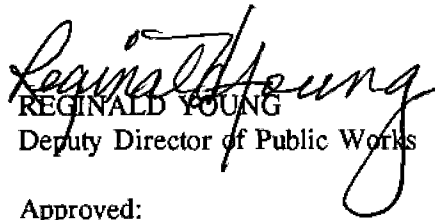
MBE/WBE EFFORTS

There are no goods or services being purchased as a direct result of this action.


RECOMMENDATION

It is recommended that the City Council adopt the attached resolutions of findings and increasing residential and commercial Solid Waste and Lawn and Garden service charges.

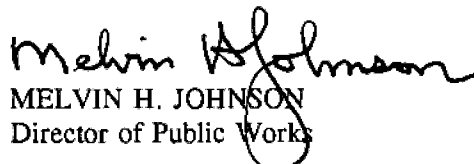
Respectfully Submitted,


REGINALD YOUNG
Deputy Director of Public Works

Recommendation Approved:


WALTER J. SLIPE
City Manager

Approved:


MELVIN H. JOHNSON
Director of Public Works

Contact Person
Michael Coleman
Administrative Services Officer
449-2013

May 22, 1991
All District

ATTACHMENT A

RESOLUTION AMENDING THE CITY OF SACRAMENTO FEE AND
CHARGE REPORT TO ESTABLISH SOLID WASTE FEES
AND CHARGES PURSUANT TO SECTIONS 19.108-1, 19.411 AND 19.412
OF THE SACRAMENTO CITY CODE

BE IT RESOLVED BY THE COUNCIL OF THE CITY OF SACRAMENTO:

That the City of Sacramento Fee and Charge Report is hereby amended to include the following solid waste fees and charges to take effect for charges for current services billed on or after April 1, 1991.

I. GARDEN REFUSE COLLECTION LAWN AND GARDEN SERVICE - Monthly Rates

Description	Rate Current	Proposed
Code	Rate	Rate
Single Family Residence	500	3.64 4.52
Double Family Residence	501	5.14 6.78
Residential Unit: 3-5 units	502	3.50 4.13+ \$1.00/unit +\$1.18/unit
6-10 units	503	6.50 7.67+ \$.50/unit + \$.59/unit
11-25 units	504	9.00 10.62+ \$.25/unit + \$.30/unit
26-50 units	505	12.75 15.03+ \$.10/unit + \$.12/unit
over 50 units	Billed non-residential	
Non-residential 2 cu. yds. of refuse	506	4.50 6.01
3 cu. yds. of refuse	507	5.50 7.27+ \$.50/cy in \$.67/cy in excess of 3 excess of 3 cy.
Residential Street Sweeping	508	.50 .50

(Note: mobile home park rate is \$.50 per mobile home)

II. CURBSIDE RECYCLING

Residential - 4 units or less ~~1.52~~ 1.03
(per 90 gal can or, for customers with smaller can service, per residential unit)

III. MONTHLY GARBAGE COLLECTION SERVICE

(NOTE: * denotes restricted service no longer available for new accounts

"non-curb" is defined as container placement more than 6 ft. from curb)

Description	Rate Components	Rate Code	Current Rate	Proposed Rate
32 gal or less non-curb	1 pickup/wk	600	49.45	21.68
	2 pickups/wk		42.27	47.92
	3 pickups/wk		46.58	52.88
	5 pickups/wk		91.14	104.12
	6 pickups/wk		119.06	136.23
	add'l can/pickup		7.55	8.68
33-40 gal non-curb	1 pickup/wk	601	21.84	24.43
	2 pickups/wk		46.54	52.79
	3 pickups/wk		51.99	59.10
	5 pickups/wk		110.81	126.74
	6 pickups/wk		144.43	165.41
	add'l can/pickup		9.80	11.27
41-50 gal non-curb*	1 pickup/wk	602	28.01	31.52
	2 pickups/wk		51.99	59.10
	3 pickups/wk		56.93	64.78
	5 pickups/wk		130.32	149.17
	6 pickups/wk		155.82	178.51
	add'l can/pickup		13.03	14.98
51-60 gal non-curb*	1 pickup/wk	603	32.47	36.65
	2 pickups/wk		56.60	64.40
	3 pickups/wk		60.94	69.39
	5 pickups/wk		150.13	171.96
	6 pickups/wk		195.64	224.26
	add'l can/pickup		17.04	19.59
32 gal or less curbside/ alley/mobilehome	1 pickup/wk	604	8.73	9.35
	2 pickups/wk		20.53	22.92
	3 pickups/wk		22.84	25.58
	5 pickups/wk		45.89	52.08
	6 pickups/wk		60.14	68.47
	add'l can/pickup		3.85	4.43
33-40 gal curbside/ alley/mobilehome	1 pickup/wk	605	10.42	10.95
	2 pickups/wk		22.84	25.58
	3 pickups/wk		25.85	29.04

	5 pickups/wk		55.01	63.61
	6 pickups/wk		73.10	83.38
	add'l can/pickup		4.94	5.68
41-50 gal curbside/ alley/mobilehome*	1 pickup/wk	606	13.27	14.57
	2 pickups/wk		25.76	28.94
	3 pickups/wk		28.24	31.78
	5 pickups/wk		66.01	75.22
	6 pickups/wk		84.21	96.15
	add'l can/pickup		6.09	7.01
51-60 gal curbside/ alley/mobilehome*	1 pickup/wk	607	15.58	17.23
	2 pickups/wk		28.01	31.52
	3 pickups/wk		30.16	33.99
	5 pickups/wk		76.11	86.84
	6 pickups/wk		99.48	113.71
	add'l can/pickup		7.10	8.16
Auto-lift container	1 pickup/wk/res unit	6	7.82	8.30
	add'l can/pickup/res unit		5.01	6.21
Fee if service for additional container is stopped in less than 6 months after service is started				20.00
81-90 gallon cans for multiple family residences - over 4 units*	1 pickup, 1 can	609	51.55	59.19
	1 pickups, 2 cans		68.94	79.19
	2 pickups/wk/can		77.97	89.57
	3 pickups/wk/can		83.13	95.51
	5 pickups/wk/can		223.72	257.19
	6 pickups/wk/can		290.83	334.37
100 gallon cans for multiple family residences - over 4 units*	1 pickup, 1 can	610	57.20	65.69
	1 pickups, 2 cans		76.51	87.89
	2 pickups/wk/can		83.25	95.65
	3 pickups/wk/can		102.80	118.13
	5 pickups/wk/can		244.36	280.92
	6 pickups/wk/can		317.41	364.93
Lease rates per bin	1 cubic yard bin			
	2 cubic yard bin			
	3 cubic yard bin			
	4 cubic yard bin			
1 yd bin Loose/Leased for multi-fam res over 4 units	1 pickup/wk	611		
	2 pickups/wk			
	3 pickups/wk			
	4 pickups/wk			

	5 pickups/wk		244.68
	6 pickups/wk		312.42
1 yd bin Loose/Owned for multi-fam res over 4 units	1 pickup/wk	612	50.76
	2 pickups/wk		95.94
	3 pickups/wk		141.00
	4 pickups/wk		186.09
	5 pickups/wk		231.18
	6 pickups/wk		298.92
1 yd bin Compacted/Leased for multi-fam res over 4 units	1 pickup/wk	613	109.44
	2 pickups/wk		199.62
	3 pickups/wk		289.74
	4 pickups/wk		373.50
	5 pickups/wk		470.22
	6 pickups/wk		605.70
1 yd bin Compacted/Owned for multi-fam res over 4 units	1 pickup/wk	614	95.94
	2 pickups/wk		186.12
	3 pickups/wk		276.24
	4 pickups/wk		360.00
	5 pickups/wk		456.72
	6 pickups/wk		592.20
2 yd bin Loose/Leased for multi-fam res over 4 units	1 pickup/wk	615	81.28
	2 pickups/wk		135.45
	3 pickups/wk		189.67
	4 pickups/wk		243.75
	5 pickups/wk		297.83
	6 pickups/wk		378.84
2 yd bin Loose/Owned for multi-fam res over 4 units	1 pickup/wk	616	65.53
	2 pickups/wk		119.70
	3 pickups/wk		173.92
	4 pickups/wk		228.00
	5 pickups/wk		282.08
	6 pickups/wk		363.09
2 yd bin Compacted/Leased for multi-fam res over 4 units	1 pickup/wk	617	135.50
	2 pickups/wk		241.48
	3 pickups/wk		351.76
	4 pickups/wk		473.25
	5 pickups/wk		567.85
	6 pickups/wk		730.00
2 yd bin Compacted/Owned for multi-fam res over 4 units	1 pickup/wk	618	119.75
	2 pickups/wk		225.73

	3 pickups/wk		336.01
	4 pickups/wk		457.50
	5 pickups/wk		552.10
	6 pickups/wk		714.25
3 yd bin leased for multi-fam res over 4 units	1 pickup/wk	619	93.67
	2 pickups/wk		161.95
	3 pickups/wk		228.49
	4 pickups/wk		292.56
	5 pickups/wk		356.63
	6 pickups/wk		451.51
3 yd bin owned for multi-fam res over 4 units	1 pickup/wk	620	75.67
	2 pickups/wk		143.95
	3 pickups/wk		210.49
	4 pickups/wk		274.56
	5 pickups/wk		338.63
	6 pickups/wk		433.51
3 yd bin compactor for multi-fam res over 4 units	1 pickup/wk	621	173.42
	2 pickups/wk		303.54
	3 pickups/wk		433.44
	4 pickups/wk		544.00
	5 pickups/wk		694.49
	6 pickups/wk		888.78
4 yd bin leased for multi-fam res over 4 units	1 pickup/wk	622	106.05
	2 pickups/wk		188.44
	3 pickups/wk		267.30
	4 pickups/wk		341.35
	5 pickups/wk		415.40
	6 pickups/wk		524.18
4 yd bin owned for multi-fam res over 4 units	1 pickup/wk	623	85.80
	2 pickups/wk		168.19
	3 pickups/wk		247.05
	4 pickups/wk		321.10
	5 pickups/wk		395.15
	6 pickups/wk		503.93
5 yd bin owned for multi-fam res over 4 units	1 pickup/wk	625	111.00
	2 pickups/wk		202.08
	3 pickups/wk		293.89
	4 pickups/wk		385.04
	5 pickups/wk		476.19
	6 pickups/wk		611.65

6 yd bin owned for multi-fam res over 4 units	1 pickup/wk	627	122.30	
	2 pickups/wk		238.85	
	3 pickups/wk		355.60	
	4 pickups/wk		471.03	
	5 pickups/wk		586.45	
	6 pickups/wk		764.70	
Com 32 gal or less	1 pickup/wk	630	14.85	20.34
	2 pickups/wk		30.95	40.68
	3 pickups/wk		44.11	61.02
	4 pickups/wk		49.84	81.36
	5 pickups/wk		65.57	101.70
	6 pickups/wk		85.84	122.04
	add'l can		5.26	7.21
Com 33-40 gal	1 pickup/wk	631	15.75	21.55
	2 pickups/wk		34.11	43.10
	3 pickups/wk		38.22	64.65
	4 pickups/wk		58.74	86.20
	5 pickups/wk		79.26	107.75
	6 pickups/wk		102.73	129.30
	add'l can		6.74	9.23
Com 41-50 gal	1 pickup/wk	632	24.85	28.84
	2 pickups/wk		38.11	57.68
	3 pickups/wk		41.47	86.52
	4 pickups/wk		67.26	115.36
	5 pickups/wk		95.05	144.20
	6 pickups/wk		117.88	173.04
	add'l can		8.32	11.39
Com 51-60 gal	1 pickup/wk	633	24.21	33.17
	2 pickups/wk		44.16	66.34
	3 pickups/wk		64.11	99.51
	4 pickups/wk		75.47	132.68
	5 pickups/wk		106.83	165.85
	6 pickups/wk		138.72	199.02
	add'l can		9.69	13.28
Com 1 yd bin Loose/Leased	1 pickup/wk	634	51.12	70.03
	2 pickups/wk		87.66	140.06
	3 pickups/wk		124.44	210.09
	4 pickups/wk		161.16	280.12
	5 pickups/wk		197.88	350.15
	6 pickups/wk		252.72	420.18
Com 1 yd bin Loose/Owned	1 pickup/wk	635	37.62	56.53

	2 pickups/wk		74.16	113.06
	3 pickups/wk		140.94	169.59
	4 pickups/wk		167.66	226.12
	5 pickups/wk		184.38	282.65
	6 pickups/wk		239.22	339.18
Com 1 yd bin Compacted/Leased	1 pickup/wk	636	87.66	120.09
	2 pickups/wk		161.10	240.18
	3 pickups/wk		234.54	360.27
	4 pickups/wk		334.50	480.36
	5 pickups/wk		381.30	600.45
	6 pickups/wk		491.40	720.54
Com 1 yd bin Compacted/Owned	1 pickup/wk	637	74.46	106.59
	2 pickups/wk		147.60	213.18
	3 pickups/wk		221.04	319.77
	4 pickups/wk		321.00	426.36
	5 pickups/wk		367.80	532.95
	6 pickups/wk		477.90	639.54
Com 2 yd bin Loose/Leased	1 pickup/wk	638	64.55	88.43
	2 pickups/wk		108.59	176.86
	3 pickups/wk		152.75	265.29
	4 pickups/wk		196.74	353.72
	5 pickups/wk		240.73	442.15
	6 pickups/wk		306.62	530.58
Com 2 yd bin Loose/Owned	1 pickup/wk	639	48.80	72.68
	2 pickups/wk		92.84	145.36
	3 pickups/wk		137.00	218.04
	4 pickups/wk		180.99	290.72
	5 pickups/wk		224.98	363.40
	6 pickups/wk		290.87	436.08
Com 2 yd bin Compacted/Leased	1 pickup/wk	640	108.65	148.85
	2 pickups/wk		196.63	297.70
	3 pickups/wk		259.04	446.55
	4 pickups/wk		359.77	595.40
	5 pickups/wk		460.49	744.25
	6 pickups/wk		592.46	893.10
Com 2 yd bin Compacted/Owned	1 pickup/wk	641	92.90	133.10
	2 pickups/wk		180.88	266.20
	3 pickups/wk		243.29	399.30
	4 pickups/wk		344.02	532.40
	5 pickups/wk		444.74	665.50
	6 pickups/wk		576.71	798.60

Com 3 yd bin leased	1 pickup/wk	642	81.55	111.72
	2 pickups/wk		134.40	223.44
	3 pickups/wk		178.20	335.16
	4 pickups/wk		235.31	446.88
	5 pickups/wk		292.42	558.60
	6 pickups/wk		371.34	670.32
Com 3 yd bin owned	1 pickup/wk	643	63.55	93.72
	2 pickups/wk		116.40	187.44
	3 pickups/wk		160.20	281.16
	4 pickups/wk		217.31	374.88
	5 pickups/wk		274.42	468.60
	6 pickups/wk		353.34	562.32
Com 3 yd bin compactor	1 pickup/wk	644	105.99	145.21
	2 pickups/wk		185.57	290.42
	3 pickups/wk		265.54	435.63
	4 pickups/wk		385.06	580.84
	5 pickups/wk		424.82	726.05
	6 pickups/wk		489.95	871.26
Com 4 yd bin leased	1 pickup/wk	645	88.95	121.86
	2 pickups/wk		153.24	243.72
	3 pickups/wk		214.19	365.58
	4 pickups/wk		265.66	487.44
	5 pickups/wk		317.12	609.30
	6 pickups/wk		424.23	731.16
Com 4 yd bin owned	1 pickup/wk	646	68.70	101.61
	2 pickups/wk		132.99	203.22
	3 pickups/wk		193.94	304.83
	4 pickups/wk		245.41	406.44
	5 pickups/wk		296.87	508.05
	6 pickups/wk		403.98	609.66
Com 4 yd bin compactor	1 pickup/wk	647	128.65	176.25
	2 pickups/wk		225.10	352.50
	3 pickups/wk		321.95	528.75
	4 pickups/wk		466.80	705.00
	5 pickups/wk		514.85	881.25
	6 pickups/wk		659.20	1,057.50
Com 5 yd bin owned	1 pickup/wk	649	85.53	117.18
	2 pickups/wk		159.06	234.36
	3 pickups/wk		232.85	351.54
	4 pickups/wk		305.91	468.72

	5 pickups/wk		377.10	585.90
	6 pickups/wk		489.25	703.08
Com 5 yd bin compactor	1 pickup/wk	650	460.80	220.30
	2 pickups/wk		281.20	440.60
	3 pickups/wk		402.40	660.90
	4 pickups/wk		503.50	881.20
	5 pickups/wk		643.60	1,101.50
	6 pickups/wk		823.15	1,321.80
Com 6 yd bin owned	1 pickup/wk	652	97.45	133.51
	2 pickups/wk		191.00	267.02
	3 pickups/wk		284.50	400.53
	4 pickups/wk		376.83	534.04
	5 pickups/wk		469.15	667.55
	6 pickups/wk		612.40	801.06
Com 6 yd bin compactor	1 pickup/wk	653	192.85	264.20
	2 pickups/wk		337.60	528.40
	3 pickups/wk		482.70	792.60
	4 pickups/wk		702.00	1,056.80
	5 pickups/wk		772.20	1,321.00
	6 pickups/wk		988.50	1,585.20
Com 10 yd bin loose	1 pickup/wk	654	143.00	195.91
	2 pickups/wk		279.50	391.82
	3 pickups/wk		415.00	587.73
	4 pickups/wk		551.00	783.64
	5 pickups/wk		686.00	979.55
	6 pickups/wk		822.00	1,175.46
Com 10 yd bin compacted	1 pickup/wk	655	235.00	321.95
	2 pickups/wk		458.00	643.90
	3 pickups/wk		682.00	965.85
	4 pickups/wk		905.00	1,287.80
	5 pickups/wk		1,128.00	1,609.75
	6 pickups/wk		1,351.00	1,931.70
Com 20 yd bin loose	1 pickup/wk	656	210.00	287.70
	2 pickups/wk		410.00	575.40
	3 pickups/wk		609.00	863.10
	4 pickups/wk		809.00	1,150.80
	5 pickups/wk		1,008.00	1,438.50
	6 pickups/wk		1,208.00	1,726.20
Com 20 yd bin compacted	1 pickup/wk	657	370.00	506.90
	2 pickups/wk		721.00	1,013.80

	3 pickups/wk		1,073.00	1,520.70
	4 pickups/wk		1,425.00	2,027.60
	5 pickups/wk		1,776.00	2,534.50
	6 pickups/wk		2,128.00	3,041.40
Com 25 yd bin loose	1 pickup/wk	658	244.00	334.28
	2 pickups/wk		476.00	668.56
	3 pickups/wk		708.00	1,002.84
	4 pickups/wk		939.00	1,337.12
	5 pickups/wk		1,171.00	1,671.40
	6 pickups/wk		1,403.00	2,005.68
Com 25 yd bin compacted	1 pickup/wk	659	438.00	600.06
	2 pickups/wk		854.00	1,200.12
	3 pickups/wk		1,270.00	1,800.18
	4 pickups/wk		1,686.00	2,400.24
	5 pickups/wk		2,102.00	3,000.30
	6 pickups/wk		2,519.00	3,600.36
Com 30 yd bin loose	1 pickup/wk	660	278.00	380.86
	2 pickups/wk		542.00	761.72
	3 pickups/wk		806.00	1,142.58
	4 pickups/wk		1,070.00	1,523.44
	5 pickups/wk		1,334.00	1,904.30
	6 pickups/wk		1,599.00	2,285.16
Com 30 yd bin compacted	1 pickup/wk	661	505.00	691.85
	2 pickups/wk		985.00	1,383.70
	3 pickups/wk		1,465.00	2,075.55
	4 pickups/wk		1,944.00	2,767.40
	5 pickups/wk		2,424.00	3,459.25
	6 pickups/wk		2,904.00	4,151.10
Com 35 bin loose	1 pickup/wk	662	311.00	426.07
	2 pickups/wk		606.00	852.14
	3 pickups/wk		902.00	1,278.21
	4 pickups/wk		1,197.00	1,704.28
	5 pickups/wk		1,493.00	2,130.35
	6 pickups/wk		1,788.00	2,556.42
Com 35 bin compacted	1 pickup/wk	663	573.00	785.01
	2 pickups/wk		1,117.00	1,570.02
	3 pickups/wk		1,662.00	2,355.03
	4 pickups/wk		2,206.00	3,140.04
	5 pickups/wk		2,750.00	3,925.05
	6 pickups/wk		3,295.00	4,710.06

Com 40 yd bin loose	1 pickup/wk	664	345.00	472.65
	2 pickups/wk		673.00	945.30
	3 pickups/wk		1,001.00	1,417.95
	4 pickups/wk		1,328.00	1,890.60
	5 pickups/wk		1,656.00	2,363.25
	6 pickups/wk		1,984.00	2,835.90
Com 40 yd bin compacted	1 pickup/wk	665	640.00	876.80
	2 pickups/wk		1,240.00	1,753.60
	3 pickups/wk		1,856.00	2,630.40
	4 pickups/wk		2,464.00	3,507.20
	5 pickups/wk		3,072.00	4,384.00
	6 pickups/wk		3,680.00	5,260.80
Com 1 blanket	1 pickup	666	9.42	12.91
	2 pickups		18.96	25.82
	3 pickups		28.20	38.73
	4 pickups		37.89	51.64
	5 pickups		47.50	64.55
	6 pickups		61.92	77.46
Com 2 blanket	1 pickup	667	15.40	21.21
	2 pickups		37.86	42.42
	3 pickups		55.44	63.63
	4 pickups		68.97	84.84
	5 pickups		82.50	106.05
	6 pickups		112.92	127.26
Com 3 blanket	1 pickup	668	24.06	32.96
	2 pickups		55.44	65.92
	3 pickups		70.90	98.88
	4 pickups		102.06	131.84
	5 pickups		126.42	164.80
	6 pickups		164.46	197.76
Com 4 blanket	1 pickup	669	32.64	44.72
	2 pickups		70.98	89.44
	3 pickups		102.60	134.16
	4 pickups		134.07	178.88
	5 pickups		165.54	223.60
	6 pickups		245.52	268.32
Com 5 blanket	1 pickup	670	40.80	55.90
	2 pickups		87.06	111.80
	3 pickups		120.42	167.70
	4 pickups		165.69	223.60
	5 pickups		204.96	279.50

	6 pickups		266.70	335.40
Com Cart*	5 pickups	671	45.30	62.06
Trailer*	5 pickups	672	186.94	256.07

IV. Old Sacramento Service Courts

Com 6 yd compact unit	1 pickup	680	393.00	538.41
	2 pickups		538.00	737.06
	3 pickups		683.00	935.71
	4 pickups		902.00	1,235.74
	5 pickups		972.00	1,331.64
	6 pickups		1,409.00	1,628.93
	Special call/daily		72.80	99.74
	Special call/Sunday		108.10	148.10

The property adjacent to each service court will be billed for solid waste service utilizing the following criteria:

Parcel size	25%
Square footage of building	50%
Front footage of building	25%

V. SPECIAL GARBAGE COLLECTION SERVICE

Extra can or bag on normal route (not to exceed 5 cans/bags)	1-32 gal commercial or curbside	3.85	4.43
	32-89 gal commercial or curbside	4.94	5.68
	autolift container	5.01	5.77
Extra can or bag on normal route (not to exceed 5 cans/bags)	1-32 gal non-curb	7.55	8.69
	32-89 gal non-curb	9.80	11.27
Collection on special call	32 gal or less	16.50	18.98
	each additional can	5.70	6.56
	auto-lift container	10.92	12.56
Bins/daily	1 cubic yard	17.60	26.09
	2 cubic yards	25.10	33.54
	3 cubic yards	32.50	43.25
	4 cubic yards	39.70	46.89
	5 cubic yards	43.80	54.07
	6 cubic yards	47.90	61.61
Bins/Sunday	1 cubic yard	26.40	39.13
	2 cubic yards	37.70	50.31
	3 cubic yards	48.70	64.88

	4 cubic yards	59.00	70.34
	5 cubic yards	65.00	81.11
	6 cubic yards	71.90	92.41
Roll-off containers/daily	10 cubic yards	50.00	90.41
	20 cubic yards	80.00	132.76
	25 cubic yards	90.00	154.26
	30 cubic yards	100.00	175.75
	35 cubic yards	110.00	196.62
	40 cubic yards	120.00	218.11
Roll-off containers/Sunday	10 cubic yards	80.00	135.61
	20 cubic yards	120.00	199.15
	25 cubic yards	144.00	231.39
	30 cubic yards	160.00	263.63
	35 cubic yards	176.00	294.93
	40 cubic yards	192.00	327.17
Deliver bin and pickup	1 cubic yard	24.10	39.13
	2 cubic yards	35.20	50.31
	3 cubic yards	46.40	64.88
	4 cubic yards	57.90	70.34
Compactors/daily	3 cubic yards	62.00	67.01
	4 cubic yards	52.30	81.33
	5 cubic yards	62.50	101.66
	6 cubic yards	72.80	121.92
Compactors/Sunday	3 cubic yards	63.40	100.51
	4 cubic yards	78.90	122.00
	5 cubic yards	94.30	152.49
	6 cubic yards	108.40	182.88
Compacted Roll-off container/daily	10 cubic yards	85.00	148.57
	20 cubic yards	135.00	233.92
	25 cubic yards	155.00	276.91
	30 cubic yards	175.00	319.27
	35 cubic yards	195.00	362.26
	40 cubic yards	220.00	404.61
Compacted Roll-off container/Sunday	10 cubic yards	130.00	222.85
	20 cubic yards	240.00	350.88
	25 cubic yards	248.00	415.36
	30 cubic yards	280.00	478.90
	35 cubic yards	342.00	543.38
	40 cubic yards	352.00	606.92

Special cleanups/per hour per worker ~~26.71~~ 35.00
(Time required to remove, load in truck,
and haul away rubbish or waste matter,
plus travel time).

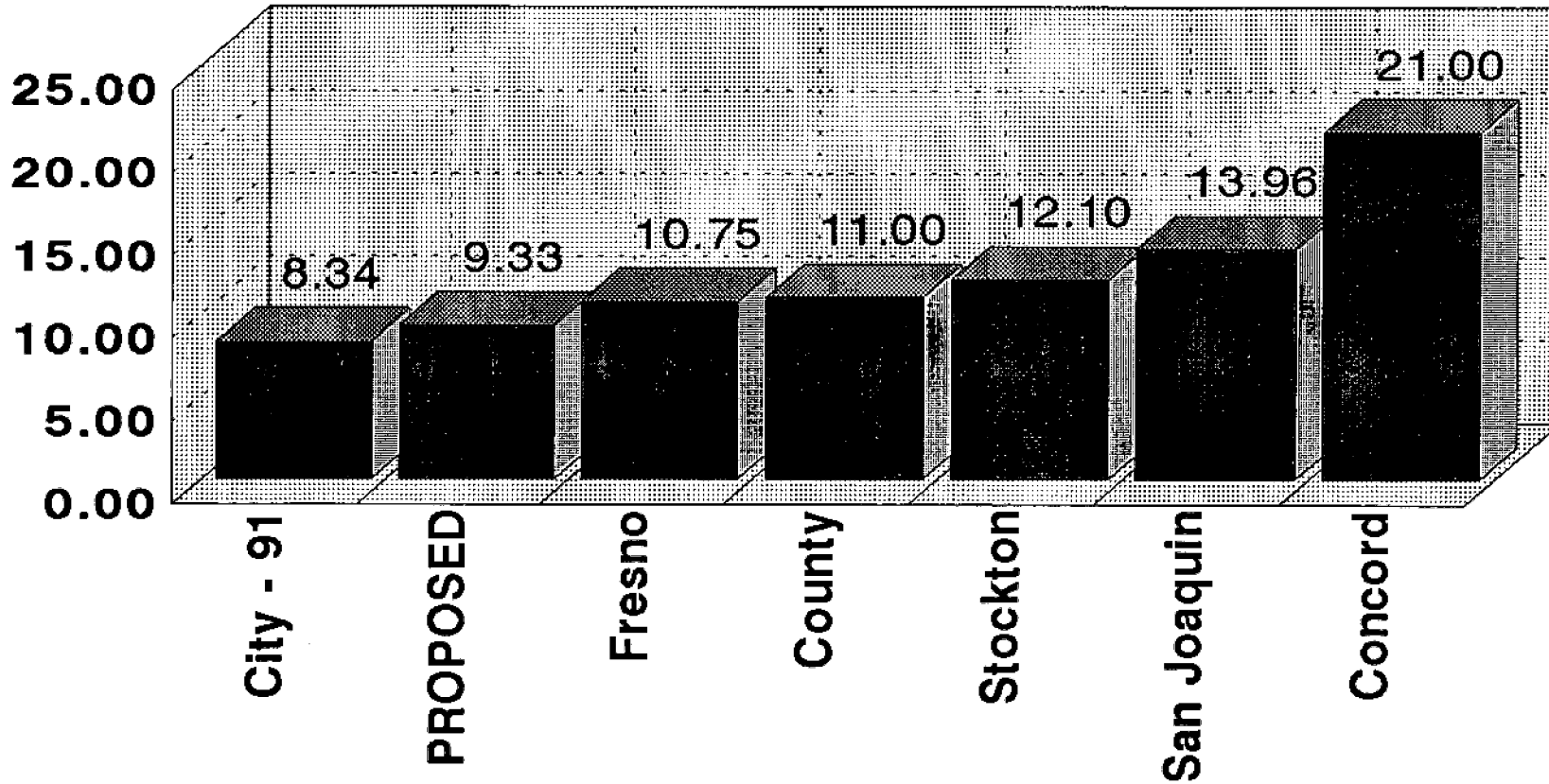
VI. COMPOST SALES

Grade A per cubic yard	0-5 cu.yds.	10.00
	6-15 cu.yds.	10.00
	16-60 cu. yds.	9.00
	61+ cu.yds.	8.00
Grade B per cubic yard	0-5 cu.yds.	8.00
	6-15 cu.yds.	7.00
	16-60 cu. yds.	6.00
	61+ cu.yds.	5.00

COLLECTION RATES

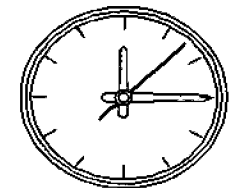
Residential Garbage

Per Month



90-Gal Supercan

Public Works Department - Working Around the Clock



Solid Waste Fund – Prioritized Rate Impact Items			
Item	Amount	FTE	Rate Impact
New Truck for Cleaning Streetside Litter Containers – Eliminate (One Time Savings)	52,860		0.2%
New Video Backup Systems on Collection Trucks – Eliminate (One Time Savings)	22,110		0.1%
Special Community Cleanup – Eliminate Existing Program	29,000		0.1%
Code Enforcement: Illegal Dumping – Eliminate Existing Program	200,000	4.0	0.9%
Household Hazardous Waste – Eliminate FY92 Augmentation	193,000		1.3%
Household Haz Waste – Reduce Existing Program	137,200		0.6%
Neighborhood Cleanup – Reduce Frequency Existing Program	447,000	7.0	2.0%
Office Recycling at City Facilities – Eliminate Existing Program	15,000		0.1%
Garden Refuse Collection – Reduce Frequency Existing Program	2,200,000	28.0	9.8%
Street Sweeping – Reduce Frequency Existing Program	168,000	2.0	0.7%
Household Hazardous Waste Program – Eliminate Existing Program	205,800		0.9%
Street Sweeping – Eliminate Existing Program	190,000	3.0	0.8%
Neighborhood Cleanup – Eliminate Existing Program	448,000	7.0	2.0%
Resid Curbside Recycling – Reduce Frequency	994,000		4.4%
			24.0%

RESOLUTION NO.

ADOPTED BY THE SACRAMENTO CITY COUNCIL

ON DATE OF _____

RESOLUTION AMENDING THE CITY OF SACRAMENTO FEE AND
CHARGE REPORT TO ESTABLISH SOLID WASTE FEES
AND CHARGES PURSUANT TO SECTIONS 19.108-1, 19.411 AND 19.412
OF THE SACRAMENTO CITY CODE

BE IT RESOLVED BY THE COUNCIL OF THE CITY OF SACRAMENTO:

That the City of Sacramento Fee and Charge Report is hereby amended to include the following solid waste fees and charges to take effect for charges for current services billed on or after April 1, 1991.

I. GARDEN REFUSE COLLECTION LAWN AND GARDEN SERVICE - Monthly Rates

Description		Rate Code	Rate
Single Family Residence		500	4.52
Double Family Residence		501	6.78
Residential Unit:	3-5 units	502	4.13+\$1.18/unit
	6-10 units	503	7.67+ \$.59/unit
	11-25 units	504	10.62+ \$.30/unit
	26-50 units	505	15.03+ \$.12/unit
	over 50 units	Billed non-residential	
Non-residential	2 cu. yds. of refuse	506	6.01
	3 cu. yds. of refuse	507	7.27+ \$.67/cy in excess of 3 cy.
Residential Street Sweeping		508	.50
(Note: mobile home park rate is \$.50 per mobile home)			

II. CURBSIDE RECYCLING

Residential - 4 units or less 1.03
(per 90 gal can or, for customers with smaller can service, per residential unit)

FOR CITY CLERK USE ONLY

RESOLUTION NO.: _____

DATE ADOPTED: _____

III. MONTHLY GARBAGE COLLECTION SERVICE

(NOTE: * denotes restricted service no longer available for new accounts
 "non-curb" is defined as container placement more than 6 ft. from curb)

Description	Rate Components	Rate Code	Rate
32 gal or less non-curb	1 pickup/wk	600	21.68
	2 pickups/wk		47.92
	3 pickups/wk		52.88
	5 pickups/wk		104.12
	6 pickups/wk		136.23
	add'l can/pickup		8.68
	33-40 gal non-curb		1 pickup/wk
2 pickups/wk		52.79	
3 pickups/wk		59.10	
5 pickups/wk		126.74	
6 pickups/wk		165.41	
add'l can/pickup		11.27	
41-50 gal non-curb*		1 pickup/wk	602
	2 pickups/wk	59.10	
	3 pickups/wk	64.78	
	5 pickups/wk	149.17	
	6 pickups/wk	178.51	
	add'l can/pickup	14.98	
	51-60 gal non-curb*	1 pickup/wk	
2 pickups/wk		64.40	
3 pickups/wk		69.39	
5 pickups/wk		171.96	
6 pickups/wk		224.26	
add'l can/pickup		19.59	
32 gal or less curbside/ alley/mobilehome		1 pickup/wk	604
	2 pickups/wk	22.92	
	3 pickups/wk	25.58	
	5 pickups/wk	52.08	
	6 pickups/wk	68.47	
	add'l can/pickup	4.43	
	33-40 gal curbside/ alley/mobilehome	1 pickup/wk	
2 pickups/wk		25.58	
3 pickups/wk		29.04	

FOR CITY CLERK USE ONLY

RESOLUTION NO.: _____

DATE ADOPTED: _____

23

	5 pickups/wk		63.61
	6 pickups/wk		83.38
	add'l can/pickup		5.68
41-50 gal curbside/ alley/mobilehome*	1 pickup/wk	606	14.57
	2 pickups/wk		28.94
	3 pickups/wk		31.78
	5 pickups/wk		75.22
	6 pickups/wk		96.15
	add'l can/pickup		7.01
51-60 gal curbside/ alley/mobilehome*	1 pickup/wk	607	17.23
	2 pickups/wk		31.52
	3 pickups/wk		33.99
	5 pickups/wk		86.84
	6 pickups/wk		113.71
	add'l can/pickup		8.16
Auto-lift container	1 pickup/wk/res unit	608	8.30
	add'l can/pickup/res unit		6.21
Fee if service for additional container is stopped in less than 6 months after service is started			
81-90 gallon cans for multiple family residences - over 4 units*	1 pickup, 1 can	609	59.19
	1 pickups, 2 cans		79.19
	2 pickups/wk/can		89.57
	3 pickups/wk/can		95.51
	5 pickups/wk/can		257.19
	6 pickups/wk/can		334.37
100 gallon cans for multiple family residences - over 4 units*	1 pickup, 1 can	610	65.69
	1 pickups, 2 cans		87.89
	2 pickups/wk/can		95.65
	3 pickups/wk/can		118.13
	5 pickups/wk/can		280.92
	6 pickups/wk/can		364.93
Lease rates per bin	1 cubic yard bin		13.50
	2 cubic yard bin		15.75
	3 cubic yard bin		18.00
	4 cubic yard bin		20.25
1 yd bin Loose/Leased for multi-fam res over 4 units	1 pickup/wk	611	64.26
	2 pickups/wk		109.44
	3 pickups/wk		154.50
	4 pickups/wk		199.59

FOR CITY CLERK USE ONLY

RESOLUTION NO.: _____

DATE ADOPTED: _____

	5 pickups/wk		244.68
	6 pickups/wk		312.42
1 yd bin Loose/Owned for multi-fam res over 4 units	1 pickup/wk	612	50.76
	2 pickups/wk		95.94
	3 pickups/wk		141.00
	4 pickups/wk		186.09
	5 pickups/wk		231.18
	6 pickups/wk		298.92
1 yd bin Compacted/Leased for multi-fam res over 4 units	1 pickup/wk	613	109.44
	2 pickups/wk		199.62
	3 pickups/wk		289.74
	4 pickups/wk		373.50
	5 pickups/wk		470.22
	6 pickups/wk		605.70
1 yd bin Compacted/Owned for multi-fam res over 4 units	1 pickup/wk	614	95.94
	2 pickups/wk		186.12
	3 pickups/wk		276.24
	4 pickups/wk		360.00
	5 pickups/wk		456.72
	6 pickups/wk		592.20
2 yd bin Loose/Leased for multi-fam res over 4 units	1 pickup/wk	615	81.28
	2 pickups/wk		135.45
	3 pickups/wk		189.67
	4 pickups/wk		243.75
	5 pickups/wk		297.83
	6 pickups/wk		378.84
2 yd bin Loose/Owned for multi-fam res over 4 units	1 pickup/wk	616	65.53
	2 pickups/wk		119.70
	3 pickups/wk		173.92
	4 pickups/wk		228.00
	5 pickups/wk		282.08
	6 pickups/wk		363.09
2 yd bin Compacted/Leased for multi-fam res over 4 units	1 pickup/wk	617	135.50
	2 pickups/wk		241.48
	3 pickups/wk		351.76
	4 pickups/wk		473.25
	5 pickups/wk		567.85
	6 pickups/wk		730.00
2 yd bin Compacted/Owned for multi-fam res over 4 units	1 pickup/wk	618	119.75
	2 pickups/wk		225.73

FOR CITY CLERK USE ONLY

RESOLUTION NO.: _____

DATE ADOPTED: _____

25

	3 pickups/wk		336.01
	4 pickups/wk		457.50
	5 pickups/wk		552.10
	6 pickups/wk		714.25
3 yd bin leased for multi-fam res over 4 units	1 pickup/wk	619	93.67
	2 pickups/wk		161.95
	3 pickups/wk		228.49
	4 pickups/wk		292.56
	5 pickups/wk		356.63
	6 pickups/wk		451.51
3 yd bin owned for multi-fam res over 4 units	1 pickup/wk	620	75.67
	2 pickups/wk		143.95
	3 pickups/wk		210.49
	4 pickups/wk		274.56
	5 pickups/wk		338.63
	6 pickups/wk		433.51
3 yd bin compactor for multi-fam res over 4 units	1 pickup/wk	621	173.42
	2 pickups/wk		303.54
	3 pickups/wk		433.44
	4 pickups/wk		544.00
	5 pickups/wk		694.49
	6 pickups/wk		888.78
4 yd bin leased for multi-fam res over 4 units	1 pickup/wk	622	106.05
	2 pickups/wk		188.44
	3 pickups/wk		267.30
	4 pickups/wk		341.35
	5 pickups/wk		415.40
	6 pickups/wk		524.18
4 yd bin owned for multi-fam res over 4 units	1 pickup/wk	623	85.80
	2 pickups/wk		168.19
	3 pickups/wk		247.05
	4 pickups/wk		321.10
	5 pickups/wk		395.15
	6 pickups/wk		503.93
5 yd bin owned for multi-fam res over 4 units	1 pickup/wk	625	111.00
	2 pickups/wk		202.08
	3 pickups/wk		293.89
	4 pickups/wk		385.04
	5 pickups/wk		476.19
	6 pickups/wk		611.65

FOR CITY CLERK USE ONLY

RESOLUTION NO.: _____

DATE ADOPTED: _____

6 yd bin owned for multi-fam res over 4 units	1 pickup/wk	627	122.30
	2 pickups/wk		238.85
	3 pickups/wk		355.60
	4 pickups/wk		471.03
	5 pickups/wk		586.45
	6 pickups/wk		764.70
Com 32 gal or less	1 pickup/wk	630	20.34
	2 pickups/wk		40.68
	3 pickups/wk		61.02
	4 pickups/wk		81.36
	5 pickups/wk		101.70
	6 pickups/wk		122.04
	add'l can		7.21
Com 33-40 gal	1 pickup/wk	631	21.55
	2 pickups/wk		43.10
	3 pickups/wk		64.65
	4 pickups/wk		86.20
	5 pickups/wk		107.75
	6 pickups/wk		129.30
	add'l can		9.23
Com 41-50 gal	1 pickup/wk	632	28.84
	2 pickups/wk		57.68
	3 pickups/wk		86.52
	4 pickups/wk		115.36
	5 pickups/wk		144.20
	6 pickups/wk		173.04
	add'l can		11.39
Com 51-60 gal	1 pickup/wk	633	33.17
	2 pickups/wk		66.34
	3 pickups/wk		99.51
	4 pickups/wk		132.68
	5 pickups/wk		165.85
	6 pickups/wk		199.02
	add'l can		13.28
Com 1 yd bin Loose/Leased	1 pickup/wk	634	70.03
	2 pickups/wk		140.06
	3 pickups/wk		210.09
	4 pickups/wk		280.12
	5 pickups/wk		350.15
	6 pickups/wk		420.18
Com 1 yd bin Loose/Owned	1 pickup/wk	635	56.53

FOR CITY CLERK USE ONLY

RESOLUTION NO.: _____

DATE ADOPTED: _____

27

	2 pickups/wk		113.06
	3 pickups/wk		169.59
	4 pickups/wk		226.12
	5 pickups/wk		282.65
	6 pickups/wk		339.18
Com 1 yd bin Compacted/Leased	1 pickup/wk	636	120.09
	2 pickups/wk		240.18
	3 pickups/wk		360.27
	4 pickups/wk		480.36
	5 pickups/wk		600.45
	6 pickups/wk		720.54
Com 1 yd bin Compacted/Owned	1 pickup/wk	637	106.59
	2 pickups/wk		213.18
	3 pickups/wk		319.77
	4 pickups/wk		426.36
	5 pickups/wk		532.95
	6 pickups/wk		639.54
Com 2 yd bin Loose/Leased	1 pickup/wk	638	88.43
	2 pickups/wk		176.86
	3 pickups/wk		265.29
	4 pickups/wk		353.72
	5 pickups/wk		442.15
	6 pickups/wk		530.58
Com 2 yd bin Loose/Owned	1 pickup/wk	639	72.68
	2 pickups/wk		145.36
	3 pickups/wk		218.04
	4 pickups/wk		290.72
	5 pickups/wk		363.40
	6 pickups/wk		436.08
Com 2 yd bin Compacted/Leased	1 pickup/wk	640	148.85
	2 pickups/wk		297.70
	3 pickups/wk		446.55
	4 pickups/wk		595.40
	5 pickups/wk		744.25
	6 pickups/wk		893.10
Com 2 yd bin Compacted/Owned	1 pickup/wk	641	133.10
	2 pickups/wk		266.20
	3 pickups/wk		399.30
	4 pickups/wk		532.40
	5 pickups/wk		665.50
	6 pickups/wk		798.60

FOR CITY CLERK USE ONLY

RESOLUTION NO.: _____

DATE ADOPTED: _____

Com 3 yd bin leased	1 pickup/wk	642	111.72
	2 pickups/wk		223.44
	3 pickups/wk		335.16
	4 pickups/wk		446.88
	5 pickups/wk		558.60
	6 pickups/wk		670.32
Com 3 yd bin owned	1 pickup/wk	643	93.72
	2 pickups/wk		187.44
	3 pickups/wk		281.16
	4 pickups/wk		374.88
	5 pickups/wk		468.60
	6 pickups/wk		562.32
Com 3 yd bin compactor	1 pickup/wk	644	145.21
	2 pickups/wk		290.42
	3 pickups/wk		435.63
	4 pickups/wk		580.84
	5 pickups/wk		726.05
	6 pickups/wk		871.26
Com 4 yd bin leased	1 pickup/wk	645	121.86
	2 pickups/wk		243.72
	3 pickups/wk		365.58
	4 pickups/wk		487.44
	5 pickups/wk		609.30
	6 pickups/wk		731.16
Com 4 yd bin owned	1 pickup/wk	646	101.61
	2 pickups/wk		203.22
	3 pickups/wk		304.83
	4 pickups/wk		406.44
	5 pickups/wk		508.05
	6 pickups/wk		609.66
Com 4 yd bin compactor	1 pickup/wk	647	176.25
	2 pickups/wk		352.50
	3 pickups/wk		528.75
	4 pickups/wk		705.00
	5 pickups/wk		881.25
	6 pickups/wk		1,057.50
Com 5 yd bin owned	1 pickup/wk	649	117.18
	2 pickups/wk		234.36
	3 pickups/wk		351.54
	4 pickups/wk		468.72

FOR CITY CLERK USE ONLY

RESOLUTION NO.: _____

DATE ADOPTED: _____

	5 pickups/wk		585.90
	6 pickups/wk		703.08
Com 5 yd bin compactor	1 pickup/wk	650	220.30
	2 pickups/wk		440.60
	3 pickups/wk		660.90
	4 pickups/wk		881.20
	5 pickups/wk		1,101.50
	6 pickups/wk		1,321.80
Com 6 yd bin owned	1 pickup/wk	652	133.51
	2 pickups/wk		267.02
	3 pickups/wk		400.53
	4 pickups/wk		534.04
	5 pickups/wk		667.55
	6 pickups/wk		801.06
Com 6 yd bin compactor	1 pickup/wk	653	264.20
	2 pickups/wk		528.40
	3 pickups/wk		792.60
	4 pickups/wk		1,056.80
	5 pickups/wk		1,321.00
	6 pickups/wk		1,585.20
Com 10 yd bin loose	1 pickup/wk	654	195.91
	2 pickups/wk		391.82
	3 pickups/wk		587.73
	4 pickups/wk		783.64
	5 pickups/wk		979.55
	6 pickups/wk		1,175.46
Com 10 yd bin compacted	1 pickup/wk	655	321.95
	2 pickups/wk		643.90
	3 pickups/wk		965.85
	4 pickups/wk		1,287.80
	5 pickups/wk		1,609.75
	6 pickups/wk		1,931.70
Com 20 yd bin loose	1 pickup/wk	656	287.70
	2 pickups/wk		575.40
	3 pickups/wk		863.10
	4 pickups/wk		1,150.80
	5 pickups/wk		1,438.50
	6 pickups/wk		1,726.20
Com 20 yd bin compacted	1 pickup/wk	657	506.90
	2 pickups/wk		1,013.80

FOR CITY CLERK USE ONLY

RESOLUTION NO.: _____

DATE ADOPTED: _____

	3 pickups/wk		1,520.70
	4 pickups/wk		2,027.60
	5 pickups/wk		2,534.50
	6 pickups/wk		3,041.40
Com 25 yd bin loose	1 pickup/wk	658	334.28
	2 pickups/wk		668.56
	3 pickups/wk		1,002.84
	4 pickups/wk		1,337.12
	5 pickups/wk		1,671.40
	6 pickups/wk		2,005.68
Com 25 yd bin compacted	1 pickup/wk	659	600.06
	2 pickups/wk		1,200.12
	3 pickups/wk		1,800.18
	4 pickups/wk		2,400.24
	5 pickups/wk		3,000.30
	6 pickups/wk		3,600.36
Com 30 yd bin loose	1 pickup/wk	660	380.86
	2 pickups/wk		761.72
	3 pickups/wk		1,142.58
	4 pickups/wk		1,523.44
	5 pickups/wk		1,904.30
	6 pickups/wk		2,285.16
Com 30 yd bin compacted	1 pickup/wk	661	691.85
	2 pickups/wk		1,383.70
	3 pickups/wk		2,075.55
	4 pickups/wk		2,767.40
	5 pickups/wk		3,459.25
	6 pickups/wk		4,151.10
Com 35 bin loose	1 pickup/wk	662	426.07
	2 pickups/wk		852.14
	3 pickups/wk		1,278.21
	4 pickups/wk		1,704.28
	5 pickups/wk		2,130.35
	6 pickups/wk		2,556.42
Com 35 bin compacted	1 pickup/wk	663	785.01
	2 pickups/wk		1,570.02
	3 pickups/wk		2,355.03
	4 pickups/wk		3,140.04
	5 pickups/wk		3,925.05
	6 pickups/wk		4,710.06

FOR CITY CLERK USE ONLY

RESOLUTION NO.: _____

DATE ADOPTED: _____

Com 40 yd bin loose	1 pickup/wk	664	472.65
	2 pickups/wk		945.30
	3 pickups/wk		1,417.95
	4 pickups/wk		1,890.60
	5 pickups/wk		2,363.25
	6 pickups/wk		2,835.90
Com 40 yd bin compacted	1 pickup/wk	665	876.80
	2 pickups/wk		1,753.60
	3 pickups/wk		2,630.40
	4 pickups/wk		3,507.20
	5 pickups/wk		4,384.00
	6 pickups/wk		5,260.80
Com 1 blanket	1 pickup	666	12.91
	2 pickups		25.82
	3 pickups		38.73
	4 pickups		51.64
	5 pickups		64.55
	6 pickups		77.46
Com 2 blanket	1 pickup	667	21.21
	2 pickups		42.42
	3 pickups		63.63
	4 pickups		84.84
	5 pickups		106.05
	6 pickups		127.26
Com 3 blanket	1 pickup	668	32.96
	2 pickups		65.92
	3 pickups		98.88
	4 pickups		131.84
	5 pickups		164.80
	6 pickups		197.76
Com 4 blanket	1 pickup	669	44.72
	2 pickups		89.44
	3 pickups		134.16
	4 pickups		178.88
	5 pickups		223.60
	6 pickups		268.32
Com 5 blanket	1 pickup	670	55.90
	2 pickups		111.80
	3 pickups		167.70
	4 pickups		223.60
	5 pickups		279.50

FOR CITY CLERK USE ONLY

RESOLUTION NO.: _____

DATE ADOPTED: _____

	6 pickups		335.40
Com Cart*	5 pickups	671	62.06
			124.12
Trailer*	5 pickups	672	186.18
			248.24
			310.30
IV. Old Sacramento Service Courts			372.36
Com 6 yd compact unit	1 pickup	680	538.41
	2 pickups		737.06
	3 pickups		935.71
	4 pickups		1,235.74
	5 pickups		1,331.64
	6 pickups		1,628.93
	Special call/daily		99.74
	Special call/Sunday		148.10

The property adjacent to each service court will be billed for solid waste service using the following criteria:

- > Parcel size
- > Square footage of building
- > Front footage of building

V. SPECIAL GARBAGE COLLECTION SERVICE

Extra can or bag on normal route (not to exceed 5 cans/bags)	1-32 gal commercial or curbside	4.43
	32-89 gal commercial or curbside autolift container	5.68 5.77
	1-32 gal non-curb	8.69
Extra can or bag on normal route (not to exceed 5 cans/bags)	32-89 gal non-curb	11.27
	Collection on special call	32 gal or less
	each additional can	6.56
	auto-lift container	12.56
Bins/daily	1 cubic yard	26.09
	2 cubic yards	33.54
	3 cubic yards	43.25
	4 cubic yards	46.89
	5 cubic yards	54.07
	6 cubic yards	61.61
Bins/Sunday	1 cubic yard	39.13
	2 cubic yards	50.31
	3 cubic yards	64.88

FOR CITY CLERK USE ONLY

RESOLUTION NO.: _____

DATE ADOPTED: _____

	4 cubic yards	70.34
	5 cubic yards	81.11
	6 cubic yards	92.41
Roll-off containers/daily	10 cubic yards	90.41
	20 cubic yards	132.76
	25 cubic yards	154.26
	30 cubic yards	175.75
	35 cubic yards	196.62
	40 cubic yards	218.11
Roll-off containers/Sunday	10 cubic yards	135.61
	20 cubic yards	199.15
	25 cubic yards	231.39
	30 cubic yards	263.63
	35 cubic yards	294.93
	40 cubic yards	327.17
Deliver bin and pickup	1 cubic yard	39.13
	2 cubic yards	50.31
	3 cubic yards	64.88
	4 cubic yards	70.34
Compactors/daily	3 cubic yards	67.01
	4 cubic yards	81.33
	5 cubic yards	101.66
	6 cubic yards	121.92
Compactors/Sunday	3 cubic yards	100.51
	4 cubic yards	122.00
	5 cubic yards	152.49
	6 cubic yards	182.88
Compacted Roll-off container/daily	10 cubic yards	148.57
	20 cubic yards	233.92
	25 cubic yards	276.91
	30 cubic yards	319.27
	35 cubic yards	362.26
	40 cubic yards	404.61
Compacted Roll-off container/Sunday	10 cubic yards	222.85
	20 cubic yards	350.88
	25 cubic yards	415.36
	30 cubic yards	478.90
	35 cubic yards	543.38
	40 cubic yards	606.92

FOR CITY CLERK USE ONLY

RESOLUTION NO.: _____

DATE ADOPTED: _____

Special cleanups/per hour per worker 35.00
(Time required to remove, load in truck,
and haul away rubbish or waste matter,
plus travel time).

VI. COMPOST SALES

Grade A per cubic yard	0-5 cu.yds.	10.00
	6-15 cu.yds.	10.00
	16-60 cu. yds.	9.00
	61+ cu.yds.	8.00

Grade B per cubic yard	0-5 cu.yds.	8.00
	6-15 cu.yds.	7.00
	16-60 cu. yds.	6.00
	61+ cu.yds.	5.00

MAYOR

ATTEST:

CITY CLERK

FOR CITY CLERK USE ONLY

RESOLUTION NO.: _____

DATE ADOPTED: _____

RESOLUTION NO.

ADOPTED BY THE SACRAMENTO CITY COUNCIL

ON DATE OF _____

RESOLUTION OF FINDINGS ON INCREASED SOLID WASTE SERVICES FEES

WHEREAS, the City Council has held a public hearing on solid waste services fees on May 22, 1991, at which staff made a presentation including a report and at which public testimony was heard and said committee recommended adoption of an increased solid waste services fee schedule, and

WHEREAS, the City Council on May 22, 1991 at a regular public council meeting received the following information:

- (1) A staff report on the proposed increased solid waste services fees;
- (2) The solid waste services fees will permit the generation of necessary cash flow to finance maintenance of the solid waste management system and meet financial reserves requirements.
- (3) Public testimony from interested parties.

NOW THEREFORE, based on this data and all information part of the public record of this matter, the City Council makes the following findings to comply with Government Code section 210809(b)8 to establish that the passing of the increased solid waste services fees of even date herewith serves the following purposes:

- (1) The solid waste services fees will provide funds to meet operating expenses.
- (2) The solid waste services fees will permit the generation of necessary cash flow to finance maintenance of the solid waste management system and meet financial reserves requirements.
- (3) The solid waste services fees will permit the purchase of necessary equipment for the solid waste management system.
- (4) The solid waste services fees are essential as a source of funds for capital projects necessary to maintain the solid waste management system.

NOW THEREFORE, based on this information and the public words, the Council of the City of Sacramento makes the specific finding contained herein as well as all other matters in the public record as its basis for the resolution establishing the fees passed on even date herewith.

MAYOR

ATTEST:

CITY CLERK

FOR CITY CLERK USE ONLY

RESOLUTION NO.: _____

DATE ADOPTED: _____