

5



CITY OF SACRAMENTO

DEPARTMENT OF PUBLIC WORKS

ENGINEERING DIVISION

THOMAS M. FINLEY  
Engineering Division Manager

December 18, 1985

City Council  
Sacramento, California

CITY MANAGER'S OFFICE  
**RECEIVED**  
DEC 18 1985

Honorable Members In Session:

SUBJECT: Mercy Hospital of Sacramento Medical Condominiums (P-85319) -  
Approval of Final Parcel Map

SUMMARY

Adoption of a resolution approving a Final Parcel Map is requested for Mercy Hospital of Sacramento Medical Condominiums located at 3939 - 3941 J Street.

BACKGROUND

On October 22, 1985, the City Council approved a Tentative Parcel Map by adopting Resolution No. 85-808.

All conditions in the staff subdivision report have been met and the Final Parcel Map is presented for approval.

FINANCIAL

All subdivision costs are being paid by the subdivider.

RECOMMENDATION

Adoption of the attached resolution approving the Final Parcel Map is recommended.

Respectfully submitted,

THOMAS M. FINLEY  
Engineering Division Manager

**APPROVED**  
BY THE CITY COUNCIL

DEC 23 1985

OFFICE OF THE  
CITY CLERK

Recommendation Approved:

WALTER J. SLIPE  
City Manager

Approved:

FOR MELVIN H. JOHNSON  
Director of Public Works

BF:vr  
BF603Ck6

Attachment

December 23, 1985  
District No. 3

**RESOLUTION NO. 85-978**

Adopted by The Sacramento City Council on date of

APPROVING FINAL PARCEL MAP FOR MERCY HOSPITAL  
OF SACRAMENTO MEDICAL CONDOMINIUMS LOCATED AT  
3939 - 3941 J STREET (P-85319)

WHEREAS, THE COUNCIL OF THE CITY OF SACRAMENTO FINDS AND DETERMINES AS  
FOLLOWS:

- A. The Final Parcel Map for Mercy Hospital Medical Condominiums located 3939 - 3941 J Street (P-85319) with provisions for its design and improvement, is consistent with the 1963 East Sacramento Community Plan.
- B. The Final Parcel Map is in substantial compliance with the previously approved Tentative Parcel Map.

NOW, THEREFORE, BE IT RESOLVED BY THE COUNCIL OF THE CITY OF  
SACRAMENTO AS FOLLOWS:

- 1. The Final Parcel Map for Mercy Hospital of Sacramento Medical Condominiums located 3939 - 3941 J Street (P-85319) be, and the same is hereby approved subject to the execution by all parties for that subdivision.
- 2. All offers of dedication shown on said map are hereby accepted.

\_\_\_\_\_  
MAYOR

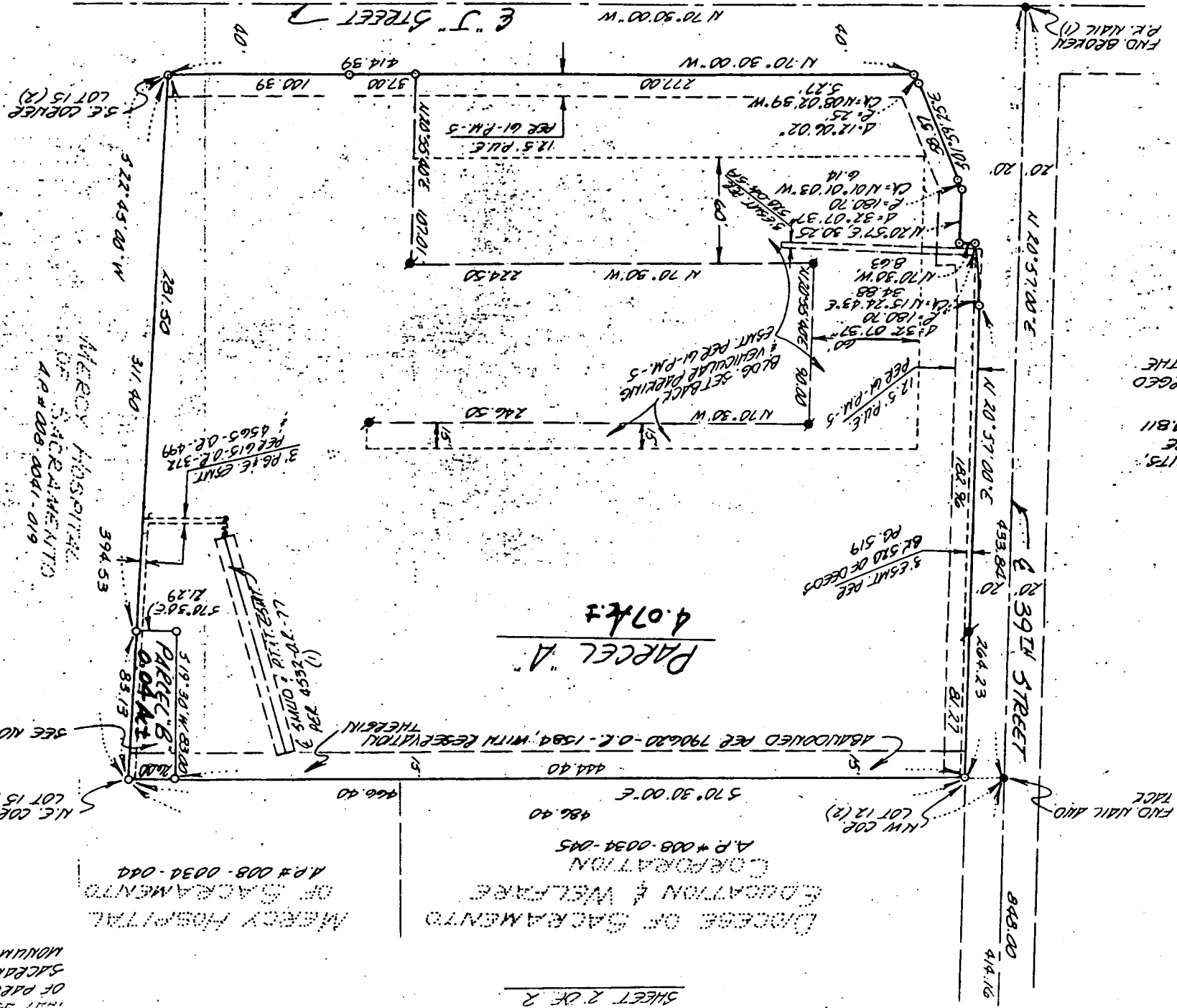
ATTEST:

\_\_\_\_\_  
CITY CLERK

**APPROVED**  
BY THE CITY COUNCIL  
DEC 23 1985  
OFFICE OF THE  
CITY CLERK

5

P



**Parcel A**  
4.07 Acs

DIocese OF SACRAMENTO  
EDUCATION & WELFARE  
CORPORATION  
A.P.# 008-0034-045  
570° 30' 00" E  
444.40

MERCY HOSPITAL  
OF SACRAMENTO  
A.P.# 008-0034-044  
519° 30' 00" W  
83.13

N.E. CORNER  
LOT 15 (R)

N.W. CORNER  
LOT 12 (R)

SEE NOTE TWO (R)

THAT AS SHOWN ON THIS MAP, THE  
OF PARCEL MAPS AT PAGE 5,  
SACRAMENTO COUNTY, AND WHOSE  
MONUMENTS SHOWN HEREON ARE

**LEGEND**

- PAID HOLDINGS
- NOTHING FOUND
- FOUND 5/8" PIN
- PUBLIC UTILITY
- (1) RECORDED INSTRUMENT
- (2) RECORDED INSTRUMENT

MERCY HOSPITAL  
OF SACRAMENTO  
A.P.# 008-0041-019

IMPROVEMENTS  
SHALL BE  
RECTIFIED 4811  
TO BE MERGED  
SHALLING ON THE

FIND BROKEN  
P.N. NAIL (1)

FIND NAIL AND  
FACE