

AMENDED
ORDINANCE NO. 89-051

ADOPTED BY THE SACRAMENTO CITY COUNCIL

ON DATE OF JUNE 27, 1989

AN ORDINANCE AUTHORIZING THE CITY OF SACRAMENTO HOUSING AUTHORITY TO CONSTRUCT A RESIDENTIAL SHELTER FOR NO MORE THAN 80 PERSONS ON PROPERTY NEAR THE SALVATION ARMY SHELTER AT 12TH STREET AND NORTH B STREET, AND DECLARING THIS ORDINANCE AN EMERGENCY MEASURE TO TAKE EFFECT IMMEDIATELY

BE IT ENACTED BY THE COUNCIL OF THE CITY OF SACRAMENTO AS FOLLOWS:

SECTION 1.

Notwithstanding any other provision of the Zoning Ordinance of the City of Sacramento (Ordinance No. 2550, Fourth Series as amended), or the Sacramento City Code (except Chapters 9, 15, or any applicable law for the preservation of life safety), the City of Sacramento Housing Authority may construct a residential shelter for the temporary housing of not more than eighty ----- (80) persons on the property described on Exhibit "A" attached hereto and incorporated herein by reference. The residential shelter shall be in substantial conformity with the plans therefor, as shown on Exhibit "B" attached hereto and incorporated herein by reference.

SECTION 2. Emergency.


This ordinance is hereby declared to be an emergency measure to take effect immediately. The facts constituting the emergency are the need to provide, as soon as possible, temporary shelter for homeless persons being required to move from unsafe and unsanitary campsites along the American River Parkway.

PUBLISHED IN FULL: AUGUST 25, 1989
ENACTED: JUNE 27, 1989
EFFECTIVE: JUNE 27, 1989



MAYOR

ATTEST:

Acting
Asst. 
CITY CLERK

FOR CITY CLERK USE ONLY

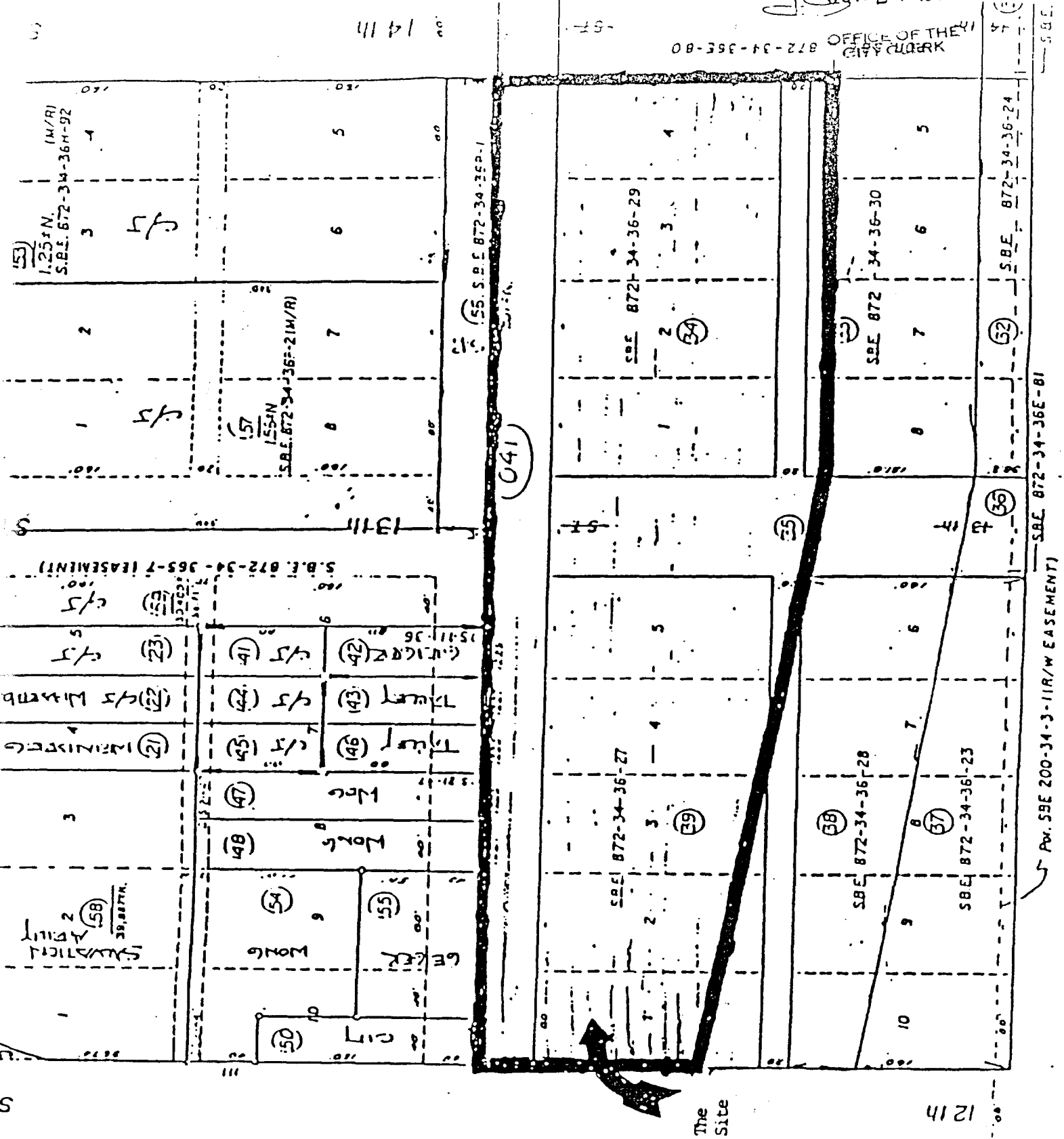
ORDINANCE NO.: 89-051

DATE ADOPTED: JUNE 27, 1989

APPROVED BY THE CITY COUNCIL

JUN 27 1989

OFFICE OF THE CITY CLERK 872-34-35E-80



ORDINANCE NO. 89-051

JUN 27 1989

12 11

The Site

Pav. SBE 200-34-3-11R/W EASEMENT SBE 872-34-36E-81

(56)

(52)

(57)

(58)

(041)

(55) S.B.E. 872-34-35E-1

(57) S.B.E. 872-34-36E-21M/R

(53) 1.25 A.C. (M/R) S.B.E. 872-34-36M-92

S.B.E. 872-34-36S-7 (EASEMENT)

(58) MEDICAL UNIT 39,817 sq. ft.

(21) WINDMILL (22) WINDMILL (23) WINDMILL

(24) WINDMILL (25) WINDMILL

(26) WINDMILL (27) WINDMILL

(28) WINDMILL (29) WINDMILL

(30) WINDMILL (31) WINDMILL

(32) WINDMILL (33) WINDMILL

(34) WINDMILL (35) WINDMILL

(36) WINDMILL (37) WINDMILL

(38) WINDMILL (39) WINDMILL

(40) WINDMILL (41) WINDMILL

(42) WINDMILL (43) WINDMILL

(44) WINDMILL (45) WINDMILL

(46) WINDMILL (47) WINDMILL

(48) WINDMILL (49) WINDMILL

(50) WINDMILL (51) WINDMILL

(52) WINDMILL (53) WINDMILL

(54) WINDMILL (55) WINDMILL

(56) WINDMILL (57) WINDMILL

(58) WINDMILL (59) WINDMILL

(60) WINDMILL (61) WINDMILL

(62) WINDMILL (63) WINDMILL

(64) WINDMILL (65) WINDMILL

(66) WINDMILL (67) WINDMILL

(68) WINDMILL (69) WINDMILL

(70) WINDMILL (71) WINDMILL

(72) WINDMILL (73) WINDMILL

(74) WINDMILL (75) WINDMILL

(76) WINDMILL (77) WINDMILL

(78) WINDMILL (79) WINDMILL

(80) WINDMILL (81) WINDMILL

(82) WINDMILL (83) WINDMILL

(84) WINDMILL (85) WINDMILL

(86) WINDMILL (87) WINDMILL

(88) WINDMILL (89) WINDMILL

(90) WINDMILL (91) WINDMILL

(92) WINDMILL (93) WINDMILL

(94) WINDMILL (95) WINDMILL

(96) WINDMILL (97) WINDMILL

(98) WINDMILL (99) WINDMILL

(100) WINDMILL (101) WINDMILL

(102) WINDMILL (103) WINDMILL

(104) WINDMILL (105) WINDMILL

(106) WINDMILL (107) WINDMILL

(108) WINDMILL (109) WINDMILL

(110) WINDMILL (111) WINDMILL

(112) WINDMILL (113) WINDMILL

(114) WINDMILL (115) WINDMILL

(116) WINDMILL (117) WINDMILL

(118) WINDMILL (119) WINDMILL

(120) WINDMILL (121) WINDMILL

(122) WINDMILL (123) WINDMILL

(124) WINDMILL (125) WINDMILL

(126) WINDMILL (127) WINDMILL

(128) WINDMILL (129) WINDMILL

(130) WINDMILL (131) WINDMILL

(132) WINDMILL (133) WINDMILL

(134) WINDMILL (135) WINDMILL

(136) WINDMILL (137) WINDMILL

(138) WINDMILL (139) WINDMILL

(140) WINDMILL (141) WINDMILL

(142) WINDMILL (143) WINDMILL

(144) WINDMILL (145) WINDMILL

(146) WINDMILL (147) WINDMILL

(148) WINDMILL (149) WINDMILL

(150) WINDMILL (151) WINDMILL

(152) WINDMILL (153) WINDMILL

(154) WINDMILL (155) WINDMILL

(156) WINDMILL (157) WINDMILL

(158) WINDMILL (159) WINDMILL

(160) WINDMILL (161) WINDMILL

(162) WINDMILL (163) WINDMILL

(164) WINDMILL (165) WINDMILL

(166) WINDMILL (167) WINDMILL

(168) WINDMILL (169) WINDMILL

(170) WINDMILL (171) WINDMILL

(172) WINDMILL (173) WINDMILL

(174) WINDMILL (175) WINDMILL

(176) WINDMILL (177) WINDMILL

(178) WINDMILL (179) WINDMILL

(180) WINDMILL (181) WINDMILL

(182) WINDMILL (183) WINDMILL

(184) WINDMILL (185) WINDMILL

(186) WINDMILL (187) WINDMILL

(188) WINDMILL (189) WINDMILL

(190) WINDMILL (191) WINDMILL

(192) WINDMILL (193) WINDMILL

(194) WINDMILL (195) WINDMILL

(196) WINDMILL (197) WINDMILL

(198) WINDMILL (199) WINDMILL

(200) WINDMILL (201) WINDMILL

(202) WINDMILL (203) WINDMILL

(204) WINDMILL (205) WINDMILL

(206) WINDMILL (207) WINDMILL

(208) WINDMILL (209) WINDMILL

(210) WINDMILL (211) WINDMILL

(212) WINDMILL (213) WINDMILL

(214) WINDMILL (215) WINDMILL

(216) WINDMILL (217) WINDMILL

(218) WINDMILL (219) WINDMILL

(220) WINDMILL (221) WINDMILL

(222) WINDMILL (223) WINDMILL

(224) WINDMILL (225) WINDMILL

(226) WINDMILL (227) WINDMILL

(228) WINDMILL (229) WINDMILL

(230) WINDMILL (231) WINDMILL

(232) WINDMILL (233) WINDMILL

(234) WINDMILL (235) WINDMILL

(236) WINDMILL (237) WINDMILL

(238) WINDMILL (239) WINDMILL

(240) WINDMILL (241) WINDMILL

(242) WINDMILL (243) WINDMILL

(244) WINDMILL (245) WINDMILL

(246) WINDMILL (247) WINDMILL

(248) WINDMILL (249) WINDMILL

(250) WINDMILL (251) WINDMILL

(252) WINDMILL (253) WINDMILL

(254) WINDMILL (255) WINDMILL

(256) WINDMILL (257) WINDMILL

(258) WINDMILL (259) WINDMILL

(260) WINDMILL (261) WINDMILL

(262) WINDMILL (263) WINDMILL

(264) WINDMILL (265) WINDMILL

(266) WINDMILL (267) WINDMILL

(268) WINDMILL (269) WINDMILL

(270) WINDMILL (271) WINDMILL

(272) WINDMILL (273) WINDMILL

(274) WINDMILL (275) WINDMILL

(276) WINDMILL (277) WINDMILL

(278) WINDMILL (279) WINDMILL

(280) WINDMILL (281) WINDMILL

(282) WINDMILL (283) WINDMILL

(284) WINDMILL (285) WINDMILL

(286) WINDMILL (287) WINDMILL

(288) WINDMILL (289) WINDMILL

(290) WINDMILL (291) WINDMILL

(292) WINDMILL (293) WINDMILL

(294) WINDMILL (295) WINDMILL

(296) WINDMILL (297) WINDMILL

(298) WINDMILL (299) WINDMILL

(300) WINDMILL (301) WINDMILL

(302) WINDMILL (303) WINDMILL

(304) WINDMILL (305) WINDMILL

(306) WINDMILL (307) WINDMILL

(308) WINDMILL (309) WINDMILL

(310) WINDMILL (311) WINDMILL

(312) WINDMILL (313) WINDMILL

(314) WINDMILL (315) WINDMILL

(316) WINDMILL (317) WINDMILL

(318) WINDMILL (319) WINDMILL

(320) WINDMILL (321) WINDMILL

(322) WINDMILL (323) WINDMILL

(324) WINDMILL (325) WINDMILL

(326) WINDMILL (327) WINDMILL

(328) WINDMILL (329) WINDMILL

(330) WINDMILL (331) WINDMILL

(332) WINDMILL (333) WINDMILL

(334) WINDMILL (335) WINDMILL

(336) WINDMILL (337) WINDMILL

(338) WINDMILL (339) WINDMILL

(340) WINDMILL (341) WINDMILL

(342) WINDMILL (343) WINDMILL

(344) WINDMILL (345) WINDMILL

(346) WINDMILL (347) WINDMILL

(348) WINDMILL (349) WINDMILL

(350) WINDMILL (351) WINDMILL

(352) WINDMILL (353) WINDMILL

(354) WINDMILL (355) WINDMILL

(356) WINDMILL (357) WINDMILL

(358) WINDMILL (359) WINDMILL

(360) WINDMILL (361) WINDMILL

(362) WINDMILL (363) WINDMILL

(364) WINDMILL (365) WINDMILL

(366) WINDMILL (367) WINDMILL

(368) WINDMILL (369) WINDMILL

(370) WINDMILL (371) WINDMILL

(372) WINDMILL (373) WINDMILL

(374) WINDMILL (375) WINDMILL

(376) WINDMILL (377) WINDMILL

(378) WINDMILL (379) WINDMILL

(380) WINDMILL (381) WINDMILL

(382) WINDMILL (383) WINDMILL

(384) WINDMILL (385) WINDMILL

(386) WINDMILL (387) WINDMILL

(388) WINDMILL (389) WINDMILL

(390) WINDMILL (391) WINDMILL

(392) WINDMILL (393) WINDMILL

(394) WINDMILL (395) WINDMILL

(396) WINDMILL (397) WINDMILL

(398) WINDMILL (399) WINDMILL

(400) WINDMILL (401) WINDMILL

(402) WINDMILL (403) WINDMILL

(404) WINDMILL (405) WINDMILL

(406) WINDMILL (407) WINDMILL

(408) WINDMILL (409) WINDMILL

(410) WINDMILL (411) WINDMILL

(412) WINDMILL (413) WINDMILL

(414) WINDMILL (415) WINDMILL

(416) WINDMILL (417) WINDMILL

(418) WINDMILL (419) WINDMILL

(420) WINDMILL (421) WINDMILL

(422) WINDMILL (423) WINDMILL

(424) WINDMILL (425) WINDMILL

(426) WINDMILL (427) WINDMILL

(428) WINDMILL (429) WINDMILL

(430) WINDMILL (431) WINDMILL

(432) WINDMILL (433) WINDMILL

(434) WINDMILL (435) WINDMILL

(436) WINDMILL (437) WINDMILL

(438) WINDMILL (439) WINDMILL

(440) WINDMILL (441) WINDMILL

(442) WINDMILL (443) WINDMILL

(444) WINDMILL (445) WINDMILL

(446) WINDMILL (447) WINDMILL

(448) WINDMILL (449) WINDMILL

(450) WINDMILL (451) WINDMILL

(452) WINDMILL (453) WINDMILL

(454) WINDMILL (455) WINDMILL

(456) WINDMILL (457) WINDMILL

(458) WINDMILL (459) WINDMILL

(460)

APPROVED
BY THE CITY COUNCIL

JUN 27 1989

OFFICE OF THE
CITY CLERK

LEGAL DESCRIPTION

Beginning at a point of intersection at the center line of North A Street at the southerly prolongation of the westerly most boundary of 14th Street; thence from the said point of beginning in a most westerly direction along the center line of said North A Street to its intersection with the easterly most line of 12th Street; thence in a most southerly direction along the east line of 12th Street to a point 110 feet north of the property known as the Southern Pacific Right of Way line; thence continuing in a most easterly direction along a line parallel to and 110 feet north of the said Southern Pacific Right of Way line to its intersection with the westerly most line of the abandoned 14th Street; thence in a most northerly direction along the westerly line of the abandoned 14th Street to the point of beginning. Containing 3.83 acres.

154WPP(541)

ORDINANCE No. 89-051

JUN 27 1989

20

84

0

APPROVED
BY THE CITY COUNCIL

JUN 27 1989

OFFICE OF THE
CITY CLERK

40 BED
SHELTER

(7) 12x60
MODULAR
UNITS

(Room for
SUPPORT OFFICES
Included)

Complex 2

40 BED
SHELTER

(8) 12x60
MODULAR
UNITS

Complex 1

STREET

80.0

PARKING

ORDINANCE No. 89-051

JUN 27 1989

* Note: Configuration may change based on utility, parking and open space requirements

15