



CITY OF SACRAMENTO

APPROVED
BY THE CITY COUNCIL

FEB 11 1986

OFFICE OF THE
CITY MANAGER'S OFFICE
RECEIVED
FEB 6 1986

RECEIVED
CITY CLERK'S OFFICE
CITY OF SACRAMENTO
FEB 8 4 49 PM '86

DEPARTMENT OF PLANNING AND DEVELOPMENT
1231 "I" Street Sacramento, Ca. 95814

Administration
Room 300 449-5571
Building Inspections
Room 200 449-5716
Planning
Room 200 449-5604

February 4, 1986

City Council
Sacramento, California

Honorable Members in Session:

SUBJECT: Metropolitan Center (Formerly Capitol Business Park) (P83-328)

SUMMARY

Attached for the Council's review and approval are the resolutions adopting findings relative to the environmental effects and overriding considerations and amending the schematic plan and development guidelines and the ordinance amending the Natomas Eastside Development Agreement regarding Metropolitan Center.

BACKGROUND INFORMATION

In November 1985, the Council moved an intent to approve an additional 440,000 square feet of office on 30+ acres, an 11.5 acre park site, a 10 acre school site, and 30+ acres of residential (maximum average 14 dwelling units/net acre). The attached resolutions and ordinances provide for the land uses listed above and describe the development guidelines that will govern the Metropolitan Center PUD.

RECOMMENDATION

It is recommended that the City Council adopt the attached resolutions and ordinances.

Respectfully submitted,

Marty Van Duyn
Marty Van Duyn
Planning Director

RECOMMENDATION APPROVED:

Walter J. Slife
For: Walter J. Slife, City Manager

MVD:DP:lr
Attachments
P83-328

February 11, 1986
District No. 1

RESOLUTION No.

Adopted by The Sacramento City Council on date of

A RESOLUTION ADOPTING FINDINGS RELATIVE TO THE ENVIRONMENTAL EFFECTS AND OVERRIDING CONSIDERATIONS SUPPORTING APPROVAL OF CAPITOL BUSINESS PARK ALSO KNOWN AS METROPOLITAN CENTER (P83-328)

WHEREAS, the City Council considered the Draft and Final Environmental Impact Reports for the South Natomas Community Plan Update and Related Projects, and more particularly the supplemental draft and final Environmental Impact Reports for Capitol Business Park in duly noticed public hearings held on June 10, June 17, June 24, July 1, July 15, July 22, September 10, November 6 and November 19, 1985.

BE IT, THEREFORE, RESOLVED BY THE COUNCIL OF THE CITY OF SACRAMENTO:

1. The aforesaid supplemental EIR for Capitol Business Park is hereby certified as adequate, and has been prepared in compliance with the California Environmental Quality Act (CEQA).
2. The attached "Findings of Fact and Statement of Overriding Concern" is hereby adopted and incorporated by this reference as though fully set forth herein.
3. The City Clerk is hereby directed to obtain from the project applicant an affidavit documenting the proper filing with the County and posting of a CEQA notice of determination. Applicant shall provide the City Clerk said affidavit within ten (10) days of the date of approval of the Capitol Business Park proposal and related development agreement amendments.

ANNE RUDIN, MAYOR

ATTEST:

CITY CLERK

FINDINGS OF FACT
AND
STATEMENT OF OVERRIDING CONCERNS

A. BACKGROUND INFORMATION ON THE CAPITOL BUSINESS PARK APPLICATION

The project contemplated by the Capitol Business Park application called for:

1. An amendment of the 1974 City General Plan from Residential to Commercial and Offices;
2. An amendment of the 1978 South Natomas Community Plan from Residential (74 acres) and Park (11 acres) to Business and Professional Offices (81 acres) and Shopping Center - Commercial (4 acres);
3. An amendment of the Natomas Eastside PUD from Residential and Park to Office and Commercial; and
4. A rezone from 85+ acres Garden Apartment (R-2B PUD) to Office and Limited Commercial (C-1 PUD).

The project is located west of I-5, south of I-80, east of the Main Drainage Canal, north of West El Camino.

B. DRAFT AND FINAL EIR

The Planning Director advised that the Environmental Coordinator, after having reviewed the Application Package, the Environmental Questionnaire and the Initial Study, determined that the proposal constituted a project as defined by the California Environmental Quality Act (Public Resources Code, Section 21000 et seq.) ("CEQA"), the State CEQA Guidelines (14 California Administrative Code, Section 15000 et seq.) ("Guidelines"), and the City regulations implementing CEQA (Resolution 78-172); and that a draft and final environmental impact report would be required for Capitol Business Park.

At approximately the same time the application for the Capitol Business Park was submitted, the City Council determined that it wished to update the 1978 South Natomas Community Plan. The firm of Blaney-Dyett and Associates was retained to prepare the plan update. A draft environmental impact report was subsequently prepared to analyze the environmental issues associated with the Blaney and Associates proposal as well as the eleven then pending project specific South Natomas applications, including the Capitol Business Park application. The draft report which was eventually produced is contained in two volumes. The first of these volumes analyzes the environmental impacts associated with the updated plan prepared by Blaney-Dyett and Associates while the second contains supplemental EIRs for the eleven specific projects. These two volumes are entitled "South Natomas Community Plan Update and Related Projects" and are dated November 1984. Together they provide the draft environmental documentation for the Capitol Business Park project.

The draft supplemental report was subsequently circulated for comment and review as required by CEQA and the City Guidelines implementing CEQA. Responses to those comments received were then prepared. These comments and respective responses were next combined with the draft supplemental EIR to form the final EIR for the Capitol Business Park Proposal. The final Capitol Business Park supplemental EIR relates specifically to and assesses the potential impacts that the project would have on the environment. It contains, by reference to the Plan Update volume of the EIR, a detailed analysis of the cumulative impacts of (i) the Capitol Business Park proposal, (ii) the other ten pending applications plus the Capitol Business Park proposal and the previously approved Creekside Oaks (P-9317) and Gateway Centre (P83-152) applications and (iii) the five development projects proposed for North Natomas. The Capitol Business Park supplemental EIR provides the decisionmaker with environmental documentation of the alternatives of (i) the 1978 South Natomas Community Plan as amended, (ii) the development of the South Natomas area as proposed under the 1978 South Natomas Community Plan with the addition of the eleven pending applications plus the approved Creekside Oaks and Gateway Centre applications and (iii) the no project alternative which assumed no further development would occur in South Natomas. In addition, the final EIR for the Capitol Business Park proposal identifies the growth inducing impacts which would stem from approval of the project as

well as the unavoidable impacts which would result. Short term uses of the environment as opposed to long term productivity are also identified and discussed.

C. GENERAL FINDINGS

The City Council, in duly noticed public hearings which occurred on June 10, June 17, June 24, July 1, July 15, July 22, September 10, November 6, and November 19, 1985, and having received evidence at such hearings, both oral and written, and the hearing on the Capitol Business Park application having been closed, finds the following:

1. The Capitol Business Park supplemental EIR is adequate and complete and meets in all respects the requirements of CEQA, the Guidelines and the City regulations implementing CEQA.

2. That the Capitol Business Park supplemental EIR incorporated the "existing situation," i.e., the vacant site for comparative purposes as well as the existing approved land use plan or alternative.

3. That the Capitol Business Park supplemental EIR fully and adequately discusses the cumulative impacts of the Capitol Business Park application, plus the ten other pending South Natomas applications and the approved Creekside Oaks and Gateway Centre applications and the five North Natomas applications.

4. That each and every potentially significant environmental impact disclosed as applicable solely to the Capitol Business Park project, whether described in the Capitol Business Park EIR as growth inducing, unavoidable, irreversible or short-term versus long-term, has been determined to be less than significant, and has been fully mitigated through project design, the reduction of the scope of the project, project development guidelines, amendment to the 1974 General Plan and the 1978 South Natomas Community Plan, the establishment of development fees or other mitigation measures adopted by the City. Development fees stemming from the Capitol Business Park project, as well as other approved and future area projects, as required by the 1986 South Natomas Community Plan, provide funding for various mitigation measures adopted by the City and, accordingly, evidence the feasibility of such measures.

5. That certain cumulative impacts have, because of the inability to fully mitigate them, been determined to be significant as defined by CEQA and the Guidelines. These impacts stem from cumulatively analyzing the Capitol Business Park application, the previously approved Gateway Centre and Creekside Oaks projects, the other ten South Natomas applications and the five North Natomas applications. The identified impacts which when taken collectively are determined to be significant are:

a. Land Use and Geology and Soils.

- (1) Potential conflicts with neighboring agricultural uses.
- (2) The conversion of prime agricultural land to urban uses.
- (3) Inconsistency with residential land use designation under the 1978 South Natomas Community Plan.
- (4) Inconsistency with portions of the 1984 draft South Natomas Community Plan.

b. Transportation. An increase in automobile traffic to and from the Capitol Business Park project and other commercial and/or residential developments in South Natomas and increasingly unacceptable traffic levels of service throughout the South Natomas Community.

D. DISCUSSION OF MITIGATION MEASURES AND PROJECT ALTERNATIVES RELATED TO THE IDENTIFIED CUMULATIVE SIGNIFICANT IMPACTS.

Notwithstanding the disclosure of the above-cited cumulative impacts, the City Council elects to approve the Capitol Business Park application. (See Section 21081 of the Public Resources Code; Section 15091 of the Guidelines.)

Various mitigation measures are included as conditions of Project approval; however, in the opinion of the City Council, the mitigation measures will not in all instances reduce the disclosed cumulative impacts to acceptable levels. The mitigation measures adopted by the City Council as conditions of Project approval are disclosed in the records before the City Planning Commission and the

City Council and are summarized below. Those factors which make infeasible the various project alternatives identified in the Capitol Business Park Supplemental EIR are also discussed below.

1. Land Use, Population and Housing.

a. Mitigation. There are no feasible mitigation measures for the conversion of prime agricultural land to urban uses and the potential conflicts with neighboring agricultural uses. The loss of housing contemplated under the 1978 South Natomas Community Plan has been mitigated by approving only 440,000 square feet of new office development, thereby retaining a large portion of the project site for residential uses. The approved uses for the project site closely resemble those recommended by the 1984 draft South Natomas Community Plan, reflecting the fact that the plan provided the model for various mitigation measures.

b. No-Project Alternative." The City Council determined that the use of the Capitol Business Park site for agriculture is infeasible because the site will be surrounded by urban uses to the east, west and south. Accordingly, the no-project alternative was rejected.

c. 1978 South Natomas Community Plan Alternative. The City Council determined that the displaced units will be replaced in other areas of the City and that the benefits to the City of the Capitol Business Park project outweigh the harm of the displacement of dwelling units and population. For these reasons, the City Council specifically rejected the 1978 South Natomas Community Plan alternative.

2. Transportation.

a. Mitigation. The consequences of the cumulative increase in traffic will be mitigated, although not to a level of insignificance, via the development fee mechanism adopted as part of the 1986 South Natomas Community Plan. That mechanism will result in a fund to be used for the construction of various traffic improvements. The reduction in the scope of the office component of the project to 440,000 square feet also serves to mitigate potential traffic congestion. It was recognized by the City Council that certain traffic impacts are not physically capable of mitigation.

b. "No-Project Alternative." The no-project alternative would result in little or no increase in traffic. The City Council, however, rejected this alternative as infeasible since it determined that the project benefits outweigh this unavoidable adverse impact.

c. 1978 South Natomas Community Plan Alternative. The environmental analysis indicates that the 1978 South Natomas Community Plan Alternative would cause unacceptable levels of service at a number of intersections. Consequently, this alternative itself would result in substantial capacity deficiencies at certain key intersections. Based upon this fact and the overall benefits to the City of approval of the Capitol Business Park application, the City Council rejected the 1978 South Natomas Community Plan Alternative, although the office component was scaled-back to more closely reflect the 1978 Plan.

E. STATEMENT OF OVERRIDING CONCERNS

The City Council has balanced the benefits to the South Natomas Community and the City as a whole against the risks of environmental damage disclosed in the Capitol Business

Park Supplemental EIR. To the extent that the impacts have not been mitigated to acceptable levels, the City Council finds the following specific economic, social and other considerations support approval of the Capitol Business Park project as modified:

1. The Capitol Business Park project will result in increased revenues to the City in the form of taxes, fees and other charges related to construction, employment and the increased value of land related improvements.
2. The Capitol Business Park project will result in new direct office-related jobs within the City of Sacramento.
3. The Capitol Business Park project will generate significant additional employment in Sacramento in the construction industry.

4. The Capitol Business Park project will help diversify the economic base, which is particularly needed in Sacramento at this time because of the limited growth in state and local government, which has in the past been the major Sacramento employer.

5. The Capitol Business Park project will result in the opportunity to capture major corporate headquarter users which seek good access to downtown Sacramento, the airport and to major freeways.

6. The Capitol Business Park project will result in an opportunity to capture an important segment of the so called "high tech" industries which are presently seeking new office locations in the Sacramento area.

Dated: _____ Mayor of the City of Sacramento

SECOND AMENDMENT TO
 DEVELOPMENT AGREEMENT
 BY AND BETWEEN
 THE CITY OF SACRAMENTO
 AND
 SACRAMENTO INVESTMENT COMPANY II, LTD.
 RELATIVE TO THE DEVELOPMENT
 KNOWN AS METROPOLITAN CENTER,
 PREVIOUSLY KNOWN AS
 NATOMAS EASTSIDE

This Amendment is made this 11th day of February, 1986, by and between Sacramento Investment Company II, Ltd., (hereinafter "Developer"), and the City of Sacramento (hereinafter "City"), pursuant to the authority of California Development Code Section 65868, for the purpose of amending the certain Development Agreement by and between the City of Sacramento and Sacramento Investment Company II, Ltd., relative to the Development known as Metropolitan Center, previously known as Natomas Eastside, identified as "City Agreement No. 82054, dated December 7, 1982 (hereinafter "the Agreement").

Recitals

1. Section 1(C) of the Agreement provides for the sale of said agreement which sale from 885 Investment Company to Sacramento Investment Company II, Ltd., has occurred. Shortly after said sale, the development name was altered from Natomas Eastside to Metropolitan Center.

2. Section 1(E) of the Agreement provides for amendment from time to time by mutual consent of the parties in accordance with the provisions of California Government Code Sections 65867 and 65868 and City Ordinance No. 82-100.

3. Developer sought City's approval of amendments to the 1974 General Plan and the 1978 South Natomas Community Plan; and of certain land use entitlements as set forth in its application which would permit development of a certain 81+ acre portion of Metropolitan Center for 1,837,000 square feet of office development and an additional certain 4+ acre portion of Metropolitan Center for 51,000 square feet of commercial.

4. Applications for said approvals and California Environmental Quality Act (hereinafter "CEQA") documentation required for the Metropolitan Center Project, were considered by the City Council at duly noticed public hearings on June 10, June 17, June 24, July 1, July 15, July 22, September 10, November 6, and November 19, 1985.

5. On November 19, 1985, the City Council certified as adequate and complete the Environmental Impact Report for Metropolitan Center (hereinafter the "Metropolitan Center EIR"). Mitigation measures which were suggested in the Metropolitan Center Supplemental EIR were incorporated to the extent feasible in the revised Development Guidelines for Metropolitan Center, and in the terms and conditions of this Agreement, as reflected by the Findings of Fact and Statement of Overriding Concerns adopted by the City Council concurrently with this Amendment.

6. Pursuant to applicable provisions of CEQA, the City Environmental Coordinator has determined that the adoption of this Agreement involves no new impacts not already considered in the Metropolitan Center Supplemental EIR; therefore, no further environmental documentation is required.

7. Following consideration and certification of the Metropolitan Center EIR and the adoption by resolution of CEQA related findings, the City Council on February 11, 1986, approved the following:

- a. An amendment to and redesignation of the Metropolitan Center (PUD).
- b. A rezoning of 32+ acres from Garden Apartment (R-2B PUD) to Office Building (OB-PUD), permitting 440,000 square feet of office development.
- c. An amendment of 56+ net acres from Garden Apartment (R-2B PUD) to Garden Apartment (R-2A PUD) to allow residential development on 31+ acres to a maximum of 14 dwelling units per net acre.
- d. An 11.5+ acre park site and a 10+ acre school site.

8. Development of the Property, in accordance with the conditions of approval, will provide orderly growth and development of the area in accordance with the policies set forth in the General Plan and in the South Natomas Community Plan.

9. Developer will incur substantial costs in order to comply with conditions of approval and to assure development of the Property in accordance with said plans and policies.

10. Development of the Property will result in a need for municipal services and facilities in excess of those otherwise required for implementation of the existing approved uses for the Property.

11. The 1986 South Natomas community Plan establishes a development fee, which Developer agrees to pay on the 440,000 square feet of office development approved on February 11, 1986. These fees will help mitigate the impacts of the Metropolitan Center Project on the Community.

12. City desires to assure the continued development of the Metropolitan Center project for offices used and enters into this agreement to help assure that goal by providing development assurances to Developer. City's approval of development of the Property, as provided herein, is in reliance upon and in consideration of Developer's desire to assume continued development of Metropolitan Center for office uses.

NOW, THEREFORE, Developer and City hereby agree to the following amendments to the Agreement:

1. Term. The term of this Amendment to the Agreement shall be coterminous with the term set forth in Section 1.B. of the Agreement and, accordingly, shall terminate as of the termination date of the Agreement; that is, January 6, 1993.

2. Office Development of the Property. Section 2.A. of the Agreement is hereby amended to provide that Developer shall be entitled to develop 440,000 square feet of office building space, in addition to the already permitted 733,211 square feet of office building space. Said office building space shall be within the area

designated for Office Development on Exhibit A, which is hereby incorporated herein.

3. South Natomas Capital Improvement Fund. Section 3.A.(2) is hereby amended to provide that Developer shall contribute \$1,401,390 at the rate of \$1.66 per square foot of 111,000 square feet of commercial space and 733,211 square feet of office space, payable prior to issuance of a building permit for the shell of any building utilizing any portion of such space, less any credit against such amount for dedication of land as may be required by the Agreement, or any amendment hereto and provided further that Developer may pay any portion of such amount in cash payments prior to the time specified for such payments in the Agreement. The 440,000 square feet of office space referred to in Paragraph 2 of this Amendment shall not be subject to any South Natomas Capital Improvement Fund contribution requirement. The 733,211 square feet of office space subject to this \$1.66 per square foot contribution requirement shall not be subject to any additional fee stemming from the development fee required by the 1986 South Natomas Community Plan.

4. Development Fee. The Developer agrees to pay to the City the development fee required by the 1986 South Natomas Community Plan with respect only to the 440,000 square feet of office space referred to in Paragraph 2 of this Amendment.

5. Residential Development of the Property. Section 2.A. of the Agreement is hereby amended to provide that the Developer shall be entitled to develop the area shown for Residential Development on Exhibit A for medium density residential purposes, that is, at a residential density of 7-15 units per acre maximum, 14 units per net acre average.

6. Effect. Except as set forth in this Amendment the terms and conditions of the Agreement shall apply to the Metropolitan Center project and the Agreement is hereby ratified and confirmed.

7. Form. This Amendment is executed in two duplicated originals, each of which is deemed to be an original. This Amendment consists of four pages and two exhibits which constitute the entire understanding of the parties. Said exhibits are identified as follows:

Exhibit "A": Amended Planned Unit Development

SACRAMENTO INVESTMENT COMPANY
II, LTD.

By: _____

CITY OF SACRAMENTO

By: _____

Its: _____

Approved as to form:

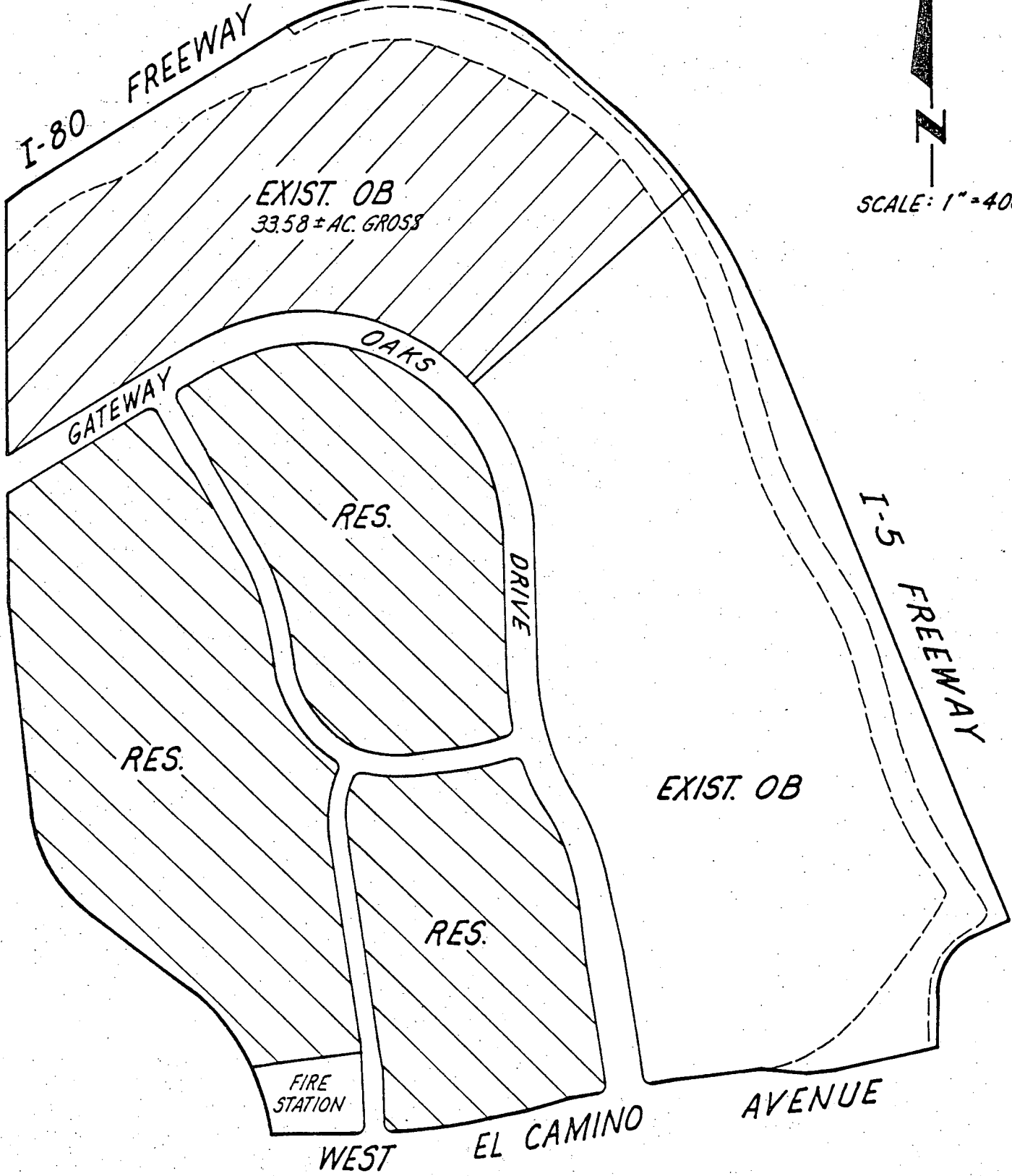
City Attorney

Attest:

City Clerk



SCALE: 1" = 400'



METROPOLITAN CENTER

<p>Murray Smith & Associates Civil Engineering Amherst Grove 1020 Explorer Drive</p>	<p>Lead Planning 10101 941-0044 Sacramento, Ca 95827</p>
---	--

RESOLUTION No.

Adopted by The Sacramento City Council on date of

RESOLUTION AMENDING THE SCHEMATIC PLAN AND
DEVELOPMENT GUIDELINES FOR THE PLANNED UNIT
DEVELOPMENT KNOWN AS METROPOLITAN CENTER
(P83-328)

WHEREAS, the City Council conducted public hearings on June 10, June 17, June 24, July 1, July 15, July 22, September 10, November 6 and November 19, 1985, to consider the amendment of the schematic plan and development guidelines originally adopted by City Resolution _____ for that project known as Metropolitan Center. Based on documentary and oral evidence submitted at said public hearings, the City Council hereby finds as follows:

1. The PUD schematic plan and development guideline amendments (hereafter "PUD Amendments") conform to the 1974 General Plan and the 1986 South Natomas Community Plan, as amended to facilitate the development in P83-328 approved by the City Council.

2. The PUD Amendments meet the purposes and criteria stated in City Zoning Ordinance Sections 8A and 8B in that the PUD Amendments facilitate mixed office, residential and commercial uses designed to:

a. assure that new development is healthy and of long lasting benefit to the community and the city.

3. The PUD Amendments will not be injurious to the public welfare, nor to other property in the vicinity of the development and will be in harmony with the general purposes and intent of the Zoning Ordinance in that the PUD Amendments insure that development will be well-designed, and that offsite residential and onsite non-residential uses will be adequately buffered by landscaping and setbacks.

NOW, THEREFORE, BE IT RESOLVED BY THE COUNCIL OF THE CITY OF SACRAMENTO, in accordance with the City Zoning Ordinance

No. 2550, Fourth Series, as amended, that the Metropolitan Center PUD schematic plan and development guidelines approved by City Resolution 83-___ are hereby amended as follows:

1. The PUD shall consist of:

<u>Use</u>	<u>Net Acres</u>	<u>Building Square Feet</u>
A. Office	85	1,173,211
B. Shopping Center	15	111,000
C. Residential	31+	Maximum average 14 dwelling units per net acre
D. Reserved School Site	10+	N/A
E. Reserved Community Park	11.5+	N/A

2. Development shall conform with the schematic plan (Exhibit "C" attached to the Second Amendment to the Metropolitan Center Development Agreement adopted concurrently with this Resolution, and incorporated by this reference as though fully set forth herein), and the Metropolitan Center Development Guidelines (Exhibit "B" to the Second Amendment to the Metropolitan Center Development Agreement adopted concurrently with this Resolution, and incorporated by this reference as though fully set forth herein).

ANNE RUDIN, MAYOR

ATTEST:

CITY CLERK

ORDINANCE NO.

ADOPTED BY THE SACRAMENTO CITY COUNCIL ON DATE OF

AN ORDINANCE AMENDING THE DISTRICTS ESTABLISHED BY THE COMPREHENSIVE ZONING ORDINANCE NO. 2550, FOURTH SERIES, AS AMENDED, BY REMOVING PROPERTY LOCATED WEST OF I-5 AND NORTH OF WEST EL CAMINO AVENUE FROM GARDEN APARTMENT (R-2B PUD) AND PLACING THE SAME IN OFFICE BUILDING (OB-PUD)

BE IT ENACTED BY THE COUNCIL OF THE CITY OF SACRAMENTO:

SECTION 1. The zoning district designation of Garden Apartment (R-2A PUD) for the territory described in Exhibit "A" is hereby superseded and replaced by zoning district designation of Office Building (OB-PUD) as described in Exhibit "B." Exhibits "A" and "B" are part of this ordinance for all purposes.

SECTION 2. The City Clerk of the City of Sacramento is hereby directed to amend the maps which are part of said Ordinance No. 2550, Fourth Series, as amended, to conform to the provisions of Section 1.

SECTION 3. Rezoning of the property described in Exhibit "A" by this ordinance conforms in all respects to the procedures for adoption of Planned Unit Developments, Section 8 of said Ordinance No. 2550, Fourth Series, as amended.

PASSED FOR PUBLICATION:

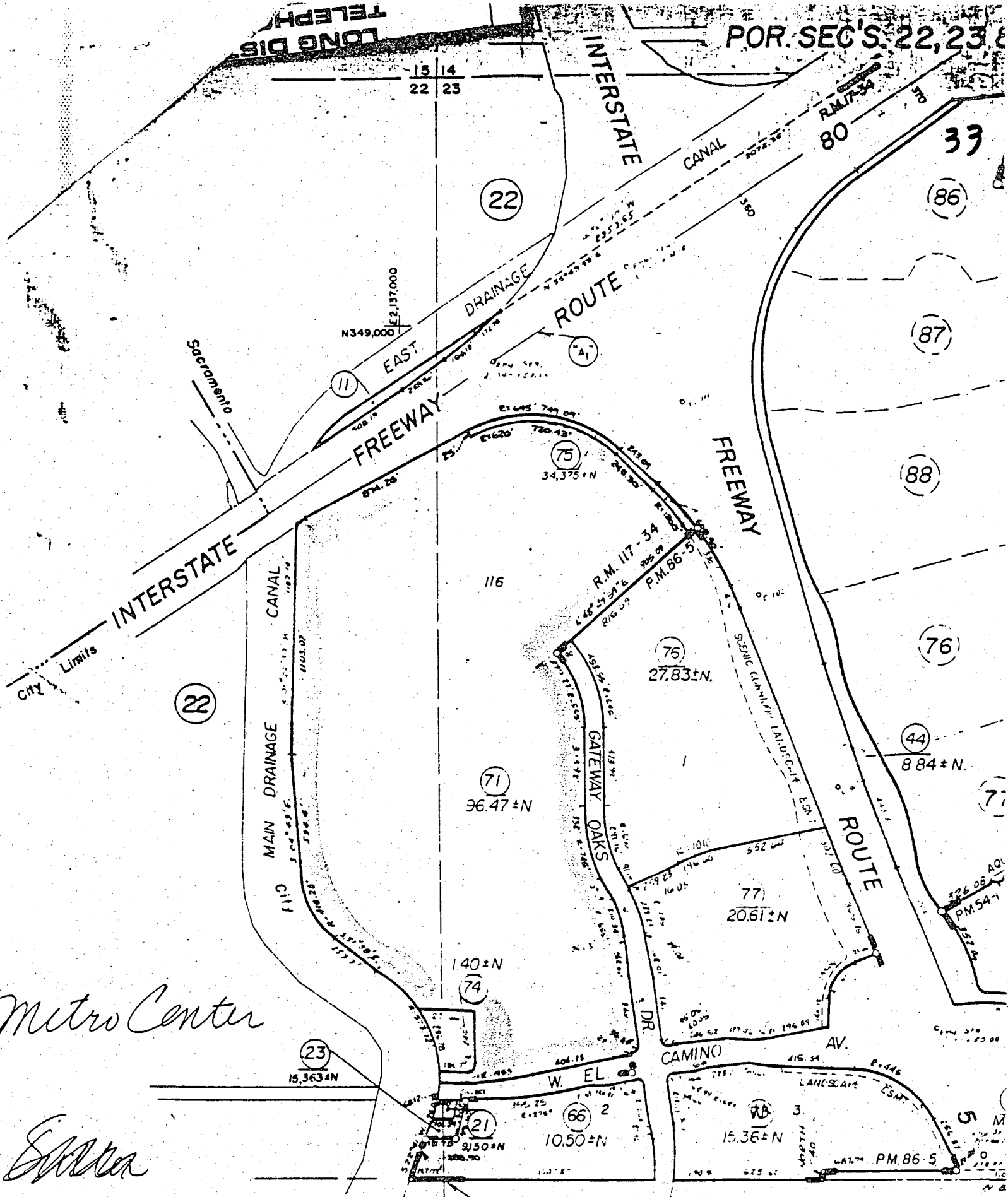
ENACTED:

EFFECTIVE:

MAYOR

ATTEST:

CITY CLERK



Metro Center

Elmer

22 | 23
27 | 26 Por. Frates Ranch Unit No. 4, R.M. Bk. 145, Pg.

Por. Woodcreek Unit No. 1, R.M. BK 116 Pg. 20 (11-30-77)

Natomas East Side Sub., R.M. Bk. 17, Pg. 34

Metropolitc

Por. Frates Ranch Unit No. 1, R.M. Bk. 130, Pg. 15 (5-24-79)

LEGAL DESCRIPTION
FOR PORTION LOT 116, NATOMAS
EAST SIDE SUBDIVISION (17 B.M. 34)
APN: 225-230-71 & 75

All that portion of Lot 116, as said Lot is shown and so designated on the Plat of Natomas East Side Subdivision filed in Book 17 of Maps, Map No. 34, County of Sacramento, State of California, more particularly described as follows:

Beginning at a point on the Westerly right of way line of the State of California Interstate I-5 Freeway, said Point also being located South 68°00'27" West 120.00 feet from the base line at Engineers Station "C-1" 81+86.00 of the Department of Public Works Survey on Road 03-Sac-5; thence, from said Point of beginning, along said Right of way, the following five (5) courses: (1) South 67°40'03" West 122.66 feet; (2) along the arc of a tangent curve to the left, concave Southeasterly, having a radius of 185.00 feet, subtended by a chord bearing South 35°07'16" West 199.05 feet, (3) South 02°34'28" West 140.12 feet, (4) South 79°32'58" West 295.89 feet and (5) South 84°00'27" West 200.00 feet; thence, leaving said Right of way line, along the Northerly line of West El Camino Avenue, the following six (6) courses: (1) South 05°59'33" East 10.00 feet; (2) South 84°00'27" West 246.52 feet; (3) along the arc of a tangent curve to the left, concave Southerly, having a radius of 4530.00 feet, subtended by a chord bearing South 82°07'04" West 298.79 feet, (4) South 80°13'40" West 404.28 feet; (5) along the arc of a tangent curve to the right, concave Northerly, having a radius of 1970.00 feet, subtended by a chord bearing South 85°10'36" West 339.89 feet, and (6) North 89°49'22" West 127.16 feet to a point on the Easterly line of Natomas Central Subdivision Main Drainage Canal as shown on said Subdivision; thence, along said Easterly line, the following five (5) courses: (1) along the arc of a curve to the left, concave Westerly having a radius of 573.69 feet, subtended by a chord bearing North 25°33'56" West 509.48 feet; (2) North 51°55'38" West 353.70 feet; (3) along the arc of a tangent curve to the right, concave Northeasterly, having a radius of 410.28 feet, subtended by a chord bearing North 28°21'08" West 328.18 feet, (4) North 04°46'38" West 594.40 feet and (5) North 01°24'52" East 1101.66 feet to a point on the Southerly right of way line of the State of California Interstate 880 Freeway as shown on said Department of Public Works Survey on Road 03-Sac-5; along said right of way, the following eight (8) courses: (1) North 56°11'57" East 64.08 feet; (2) North 61°04'26" East 874.28 feet; (3) along the arc of a tangent curve to the right, concave Southerly, having a radius of 645.00 feet, subtended by a chord bearing South 83°24'21" East 749.48 feet; (4) South 47°53'08" East 243.84 feet; (5) along the arc of a tangent curve to the right, concave southwesterly, having a radius of 1457.00 feet, subtended by a chord bearing South 35°49'27" East 608.90 feet; (6) South 23°45'47" East 114.60 feet; (7) South 21°21'20" East 1432.10 feet, and (8) South 21°59'33" East 365.96 feet to the point of beginning.

EXCEPTING THEREFROM Parcel 1 as said Parcel is shown and so designated on that certain Parcel Map entitled, "METROPOLITAN CENTER" filed in said Recorder's office in Book 86 of Parcel Maps, Page 5.

ALSO EXCEPTING THEREFROM all that portion of Lot 116 as said Lot is shown and so designated on that certain Plat entitled, "NATOMAS EAST SIDE SUBDIVISION" filed in the office of the Recorder, County of Sacramento, State of California, in Book 17 of Maps, Map No. 34 more particularly described as follows:

Legal Description
For Portion Lot 116,
Natomas East Side Subdivision

Page 2

Beginning at a point on the Westerly line of said Lot 116, which point bears North $02^{\circ}32'35''$ East 539.68 feet from the Southwest corner of Section 23, T.9N., R.5E., M.D.B. & M.; thence from said Point of beginning along a line parallel with and 89.00 feet Northerly of the centerline of West El Camino Avenue, a 60.00 foot County Road, South $89^{\circ}52'19''$ East 150.00 feet; thence along the arc of a tangent curve to the left, having a radius of 25.00 feet, said Arc being subtended by a chord bearing North $45^{\circ}07'41''$ East 35.36 feet; thence North $00^{\circ}07'41''$ East 245.00 feet; thence North $89^{\circ}52'19''$ West 271.66 feet to a point on said Westerly line of Lot 116; thence along said Westerly line, along the arc of a non-tangent curve to the right, having a radius of 573.69 feet, said Arc being subtended by a chord bearing South $19^{\circ}34'13''$ East 286.78 feet to the point of beginning.

###

Murray Smith & Associates
Engineering, Inc.

January 27, 1986
84223

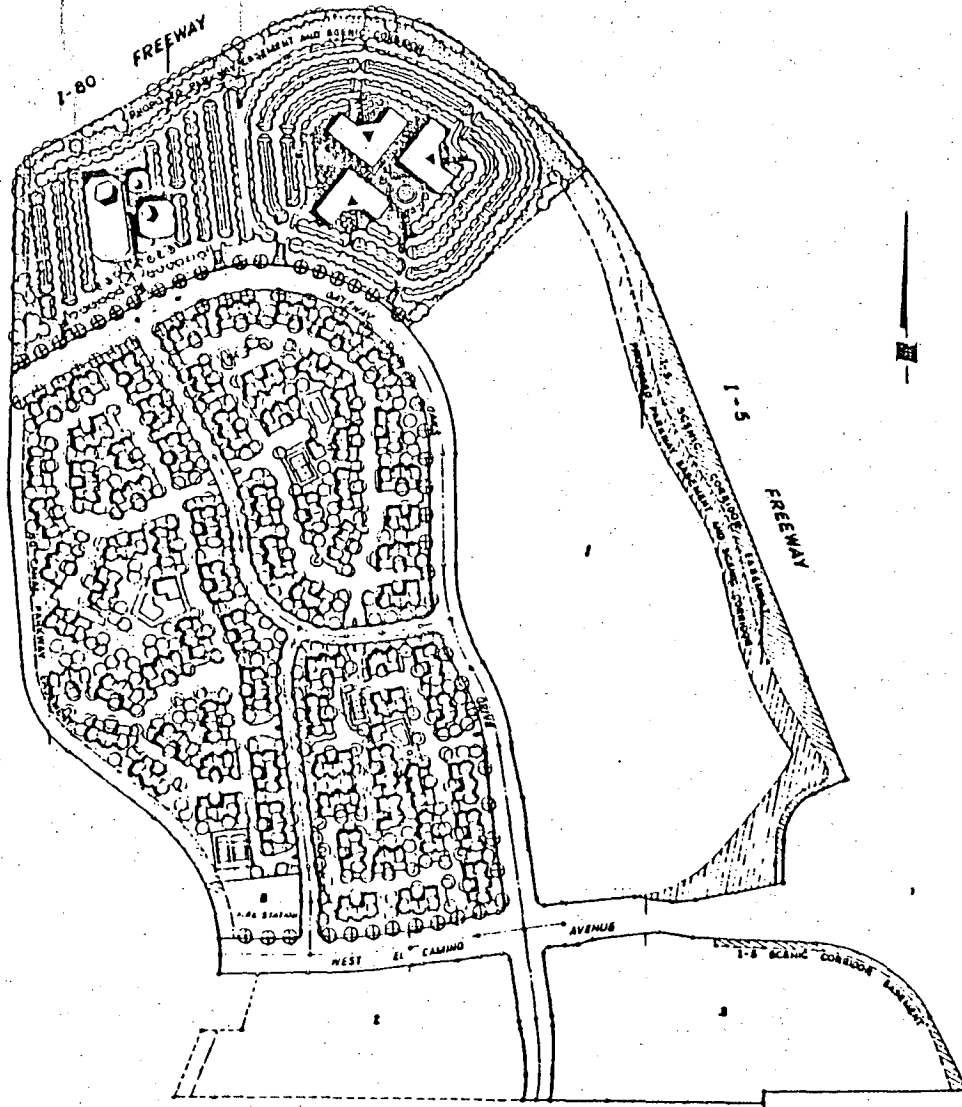
AMENDED SITE PLAN
Capitol Business Center

PORTION OF LOT 116, NATOMAS EAST SIDE SUBDIVISION, 17 B.M. 34

CITY OF SACRAMENTO, CALIFORNIA

JANUARY 1966 SCALE: 1" = 200'

MURRAY SMITH AND ASSOCIATES, ENGINEERS



PANEL NO.	USAGE	GROSS ACRES	NET ACRES	SCENIC CORRIDOR	PROPOSED PARKING	ROAD RIGHT-OF-WAY	LAND PAID FOR
1	EXISTING OR	61.24 AC.	26.81 AC.	0.12 AC.	8.10 AC.	1.62 AC.	
2	MARKETS	11.16 AC.	10.29 AC.	0.10 AC.	0.10 AC.	0.50 AC.	
3	EXISTING SC	16.06 AC.	14.79 AC.	0.26 AC.		0.40 AC.	
4	PROPOSED R/W	18.33 AC.	17.67 AC.			2.00 AC.	
5	PROPOSED R/W	20.00 AC.	16.01 AC.			0.15 AC.	
6	PROPOSED R/W	22.80 AC.	22.80 AC.	0.04 AC.	4.10 AC.	1.50 AC.	0.66 AC.
7	PROPOSED R/W	22.82 AC.	22.82 AC.			1.77 AC.	2.70 AC.
8	FIRE STATION	3.00 AC.	3.11 AC.			0.37 AC.	0.22 AC.

* NET & NET OF THIS SUBDIVISION

SUBMITTED BY: Murray Smith & Associates, Engineers	BENCH MARK		CONSTRUCTION PLANS COUNTY OF SACRAMENTO, CALIFORNIA CAPITOL BUSINESS CENTER	DRAWN BY: CSB J.P.	DATE
	APPROVED: _____ E.C.F. NO. _____ REV. DATE _____ DESCRIPTION _____ BY _____			SCALE 1" = 200'	SHEET 1

DEVELOPMENT GUIDELINES

NATOMAS EASTSIDE/METROPOLITAN CENTER
(P83-328)

TABLE OF CONTENTS

Section I Purpose and Intent

Section II Procedures for Approval

Section III Permitted Uses in the Office Building Zone

Section IV Permitted Uses in the Shopping Center Zone

Section V Environmental Standards

Section VI Building Standards

Section VII Sign Criteria and Regulations

Section VIII Residential Design Criteria

Section IX Issuance of Building Permit

Section X Building Occupancy

NOTE: References to Metropolitan Center apply to Natomas Eastside.

1. PURPOSE AND INTENT

Metropolitan Center is a planned unit development. These guidelines, as approved and accepted by the City of Sacramento City Council, shall be adopted and used by the Metropolitan Center Architectural Review Committee. Natomas Eastside/Metropolitan Center shall establish and maintain a separate architectural review committee established by the declarants and providing for successors which shall be set forth in the respective CC and R's governing the individual office parks. The Architectural Review Committee shall adhere to the following objectives in reviewing the development plans:

- 1. To provide adequate natural light, pure air and safety from fire and other dangers.
- 2. To minimize congestion due to vehicular and pedestrian circulation within the project area.
- 3. To preserve and enhance the aesthetic values throughout the project.
- 4. To promote public health, safety, comfort, convenience and general welfare.

These Development Guidelines shall incorporate the Schematic Plan for the Natomas Eastside/Metropolitan Center PUD approved by the Sacramento City Council by Resolution Nos. 82-054 and _____. These guidelines are intended to act as a supplement to existing City Ordinances. Upon request of the applicant, the Planning Director may amend or modify the Schematic Development Plan without compliance with procedural provisions of the Zoning Ordinance or any other notice of public hearing if the Planning Director determines that the requested amendment or modification is consistent with the Development Guidelines. Except as noted above, any amendments hereto can only become effective upon approval by the Planning Commission of the City of Sacramento.

11. PROCEDURES FOR APPROVAL

Development of parcels in PUDs are subject to special permit approval by the City Planning Commission. Special permit development plans shall be in conformance with the schematic plan and PUD guidelines approved by the City Council.

A preliminary review of special permit applications may be required when the City determines that such review, by City, County, State and other agencies, is essential to a thorough review.

The following information shall be submitted with a special permit application:

- 1. Names and address of builder, contractor, developer, and architect.
- 2. Project site plat with dimensions taken from signed recorded plat.
- 3. All submissions must include topography showing existing grades and proposed grades at one foot intervals with spot elevations as required to clarify drawings, also show building corner elevations and floor landscaping.

4. Proposed landscaping, including automatic irrigation system.
5. Retaining walls.
6. Locations and details of temporary and permanent signs, including dimensions.
7. Temporary and permanent fences.
8. Front, side, and rear setbacks from building to property lines.
9. Easements and rights-of-way.
10. Pipes, berms, ditches, swales.
11. Driveways, parking areas, pathways, and lighting, existing and proposed.
12. Locations and details of benches and patios.
13. Exterior storage and screening devices for trash, mechanical and communications equipment, and meters.
14. Location of light poles and transformers, with height and type indicated.
15. Sewer alignments and location of manholes and inverts.
16. Mailboxes, if any.
17. Roof projections and/or roof plan and screening treatment.
18. Land use distribution, percent and square footage of site used for the following:
 - o Building pad;
 - o Surface parking and any other paved area;
 - o Landscaping (includes private sidewalks and patios).
19. Building elevations for all sides and height to top plate and top of roof.
20. Location of existing and proposed buildings.
21. Street names and right-of-way widths.
22. Cross sections of structures indicating relationship to adjacent buildings and roadways.
23. Dimensions for typical parking stalls and maneuvering areas, including setbacks of buildings and building separation.
24. Bar scales on all plans.
25. Written approval of the Architectural Review Committee.

- 26. Phasing scheme and proposed timing schedule for buildout.
- 27. Written proof of consultation with Regional Transit regarding the impacts of the development design on transit efficiency and effectiveness in serving the site.
- 28. A transportation systems management plan.

III. PERMITTED USES IN THE OFFICE BUILDING ZONE

A. Building and Occupancy Standards

- 1. The overall net building square footage in the OB zone on Natomas Eastside/Metropolitan Center shall not exceed 1,173,211 square feet.
- 2. The minimum building size shall be 40,000 square feet. The minimum individual tenant space utilization shall be 2,500 square feet.
- 3. A structure less than 40,000 square feet may be allowed by special permit if:
 - a. The structure is part of an overall phased development plan containing 40,000 square feet or more.
 - b. The structure will house a uniquely desirable single tenant.
 - c. After 5 years or 50 percent of each office park's land area has been developed, whichever occurs first.

B. The office park is intended to house large corporate office users seeking a campus-like office park setting. Office uses normally allowed in the OB zone are permitted. Examples include:

- 1. Corporate and regional headquarters.
- 2. Communication companies such as broadcasting station offices, broadcast audience research and public opinion poll companies, cable television companies and telegraph and cablegram companies.
- 3. Banking and other financial operations.
- 4. Insurance companies.
- 5. Computer programming, data processing and other software services.
- 6. Telecommunication exchanges.

Research and development uses in the fields of electronics, communications, medical, data processing and computer technologies, environmental control, measuring devices, scientific instrumentation, and advanced engineering research shall be allowed. However, such uses shall not include the manufacture or assembly of the products derived from the research or development process.

- C. Food service uses are also permitted within the office buildings when ancillary to the office use (e.g., employee cafeteria). Principal entrance to the food service use shall be from inside the office building only. Signs shall not be visible from the outside.

IV. PERMITTED USES IN THE SHOPPING CENTER ZONE

- A. Shopping Center Zone on Metropolitan Center (25 acres): Uses normally established in the SC zone are permitted, with the exception of those listed below. The shopping center is intended to serve South Natomas as a community shopping center. Any offices shall be limited to a maximum of 2,500 square feet of gross leasable area per tenant.

Prohibited uses include hotels, motels, offices larger than 2,500 square feet, and business colleges or trade schools.

A six-foot high stone or masonry wall shall be placed along the property line abutting residentially designated land.

V. ENVIRONMENTAL STANDARDS IN THE OFFICE AND SHOPPING CENTER ZONES

- A. General

All buildings, structures, paved areas and building materials, color schemes, and landscape elements shall be designed and constructed so as to create a desirable environment for the intended use and relate harmoniously to other buildings and to adjacent residential communities.

- B. Landscaping

1. General: Natural groundcovers with permanent automatic irrigation interspersed with tree plantings will tie together the individual elements throughout the project. All landscaping referred to in this section shall be maintained in a neat and orderly fashion.
2. Minimum Landscaping Coverage per Project: Minimum landscape coverage percentage for property within the PUD and for any project within the PUD shall be 25 percent in the office zone and 15 percent in the shopping center zone. However, in the case of a single story office structure, the minimum landscaping coverage shall be 20 percent. Note: Landscaping within the I-5 scenic corridor does not count toward the minimum landscape coverage requirement.
3. Planting Types. All trees, shrubs, and groundcover planting types shall conform to the Natomas Eastside/Metropolitan Center approved plant list unless an alternative type is approved by the Director of Community Services or his designee. A plant list for the PUD shall be approved by the Planning Director prior to the submittal of the first special permit application to the planning department.
4. Setbacks Adjacent to Public Right-of-Way and Private Drives. For the purpose of providing screening of parking lots from the road-

ways, the abutting frontages shall have landscaped undulating berms. The height of the berms shall be determined with each special permit. The berms shall be landscaped with predominantly evergreen trees, shrubs and groundcover.

5. Irrigation. All landscaped areas shall be irrigated with timed permanent automatic underground systems.
 6. Surfaced Parking Lots. Trees shall be planted and maintained throughout the surfaced parking lot to insure that within 15 years after the establishment of the parking lot, at least 50 percent of the parking area will be shaded at noon on August 21st.
 7. Approval of Landscaped Plans. Project special permit approvals shall be subject to submittal of detailed landscape and irrigation plans for review and approval of staff prior to issuance of a building permit. A tree shading diagram shall be submitted with each building permit application for the review and approval of the Director of Community Services or his designee.
 8. Front and Street Side Yard Setback Area. Landscaping in these areas shall consist of an effective combination of trees, groundcover and shrubbery.
 9. Side and Rear Yard Setback Area. All unpaved areas not utilized for parking and storage shall be landscaped utilizing groundcover and/or shrubbery and tree material. Undeveloped areas proposed for future expansion shall be maintained in a reasonably weed free condition but need not be landscaped.
- Boundary landscaping is required on all interior property lines with a minimum of four feet on each property. Said boundary landscaping areas shall be placed along the entire breadth of these property lines or be of sufficient length to accommodate the required number of trees. In addition to trees, the boundary landscaping areas shall be landscaped with shrubbery and groundcover.
10. Installation of Landscaping. Prior to the issuance of any temporary or final occupancy permits, each project's landscaping, including permanent automatic irrigation system, shall either be installed or security, in a form satisfactory to the City, shall be posted to insure installation as soon as climatically possible after occupancy. Plants shall be varied in size: one and five gallon shrubs and 5 and 15 gallon and 24 inch box trees.
 11. The PUD plant list, examples of acceptable design treatment such as berming and screening, and typical street corner treatments shall be approved by the Planning Director prior to submittal of the first special permit application in the PUD.

C. Pedestrian Circulation

Primary and secondary walkways shall be designed indicating a relationship with street access, bus stops, parking areas, adjacent structures

and abutting properties through the boundary landscaping. Both walkways and bikeways shall be designed with pedestrian health and safety in mind. Pedestrian walkways and bikeways shall be landscaped to provide shade in the summer.

D. Parking Area Standards

1. Adequate off-street parking shall be provided to accommodate all parking needs of the site. The intent is to eliminate the need for any on-street parking.

2. Required off-street parking shall be provided on the site served.

3. Parking Requirements:

a. Office (OB Zone)

1) One automobile parking space for each 250 square feet of gross floor area.

2) One bicycle space for every 20 required automobile parking spaces, 50 percent of which shall be Class I facilities and 50 percent of which shall be either Class II or Class III as defined in Section 22.A.6 of the Zoning Ordinance.

3) Of the parking spaces provided, carpool, vanpool and bicycle parking spaces shall be located closest to the employee entrances to the buildings.

c. Shopping Center

1) Retail Store. One automobile space for each 250 square feet of gross floor area.

2) Restaurant/Bar. One automobile space for every three seats based upon capacity of the fixed and moveable seating area as determined under the Uniform Building Code.

3) All other commercial uses shall conform to City requirements for each commercial use.

4) One Class II or Class III bicycle space for every 25 required automobile parking spaces as defined in Section 22.A.6 of the Zoning Ordinance.

d. Carpooling and Vanpooling is encouraged for each building and shall be addressed in the Special Permit application for each development.

e. Curbs, walls, decorative fences with effective landscaping or similar barrier devices shall be located along the perimeter of parking lots and enclosed storage areas except at entrances and exits indicated on approved parking plans. Such barriers shall be designated and located to prevent parking vehicles from

extending beyond property lines of parking lots or into yard spaces where parking is prohibited and to protect public right-of-way and adjoining properties from damaging effects of surface drainage from parking lots.

Minimum stall dimensions shall correspond to standards provided in the City Zoning Ordinance except that the front two feet of all stalls, the area into which the vehicle bumper overhangs, shall be incorporated into the adjacent landscape or walkway improvements resulting in a net decrease of two feet of the required surfaced depth of the parking stall and a minimum net increase of two feet in width of the landscaped planter. No individual prefabricated wheel stop will be permitted. A continuous six-inch raised concrete curb shall be provided along all landscaped areas abutting parking or drives.

- f. Maximum of 30 percent of all vehicle parking spaces may be compact spaces.
- g. Curbs and drives shall be constructed in accordance with the latest requirements of the City of Sacramento.

E. Exterior Lighting:

- 1. Lighting shall be designed in such a manner as to provide safety and comfort for occupants of the development and the general public.
- 2. Lighting design shall be such as not to produce hazardous and annoying glare to motorists and building occupants, adjacent residents, or the general public.
- 3. Lighting shall be oriented away from the properties adjacent to the PUD.
- 4. Exterior lighting fixtures shall be similar and compatible throughout the PUD.

F. Performance Standards:

- 1. Purpose and Intent. It is the intent of these restrictions to prevent any use of the office parks which may create dangerous, injurious, noxious or otherwise objectionable conditions.
- 2. Nuisances. No nuisance shall be permitted to exist in the business parks. The term "nuisance" shall include, but not be limited to, any of the following: any use which:
 - a. Emits dust, sweepings, dirt, fumes, odors, gases, or other substances into the atmosphere which may adversely affect the health, safety or welfare of persons working at the business parks or residing in adjacent neighborhoods.
 - b. Discharges of liquid or solid wastes or other harmful matter into any stream, river or other body of water which may

adversely affect the health, safety or welfare of those working at the business parks or residing in adjacent neighborhoods.

- c. Exceeds permissible noise levels as established by the City of Sacramento.
- d. Stores hazardous or toxic materials on-site unless in compliance with all applicable governmental regulations.

VI. BUILDING STANDARDS IN THE OFFICE BUILDING AND SHOPPING CENTER ZONES

A. Purpose and Intent

The purpose and intent of this section is 1) to encourage the creative and innovative use of materials and methods of construction, and 2) to prevent indiscriminate and insensitive use of materials and design.

B. The office park shall have an overall architectural theme. The intent of the design theme is to provide overall consistency within the office park while allowing for and achieving design diversity between each building and other office/business parks in the South Natomas area.

C. Building Setbacks

	<u>Building Setback</u>	<u>Landscaped Setback</u>
Freeway (measured from exterior right-of-way line) (See Attachment I)	100'	50'**
West El Camino, and Major Street in Metropolitan Center	50'	50*
Collector in Metropolitan Center	50'	25'
All other public and private streets	25'	25'
Perimeter of properties abutting the Natomas Main Drain (contiguous to SC and OB zones)	-	20'

* A 40' landscaped setback shall apply if the streets are posted with no parking signs.

** 50' landscaped setback refers to I-80 frontage.

Setbacks shall be per these guidelines. Those setbacks not identified above shall be per the Zoning Ordinance.

D. Building Height

The following are maximum building heights.

- 1. OB Zone - 65 feet.
- 2. SC Zone - 35 feet.

If a mechanical penthouse is provided, an additional 10 feet shall be permitted.

E. Exterior Wall Materials

1. Finished building materials shall be applied to all sides of a building, including trash enclosures and mechanical and communications equipment screens.
2. Tilt-up concrete construction technique shall be allowed, only if full compliance with all of the other conditions of the guidelines are maintained. The intent is not to allow for full tilt-up concrete structures (like a warehouse facility), but only to provide that tilt-up concrete materials may form a portion of the surface area of the structures; (e.g., to provide for sheer walls, decorative forms, etc.) with other construction materials making up the majority of the surface, such as combination of glass and spandrel. See Attachment III for examples.
3. Exposed concrete block shall not be acceptable for exterior surfaces. The intent is not to preclude such concrete block construction as split face block, texture block, slump stone, or other similar material.
4. The effect of exterior wall materials shall be compatible with those used on all other buildings in the development. Examples of acceptable exterior wall materials are stucco, concrete, wood, glass, metals and brick.

F. Colors

1. Building colors shall be harmonious and compatible with the colors of other buildings in the development and with the natural surroundings.
2. The general overall atmosphere of color shall be earth tones, which includes muted shades of gray and muted shades and medium to dark tones of burnt umber, raw umber, raw sienna, burnt sienna, Indian red, English red, yellow ochre, chrome green and terra verts. Redwood, natural stone, brick, dark duranodic aluminum finishes, etc., shall be background colors. If painted surfaces are used, these shall be earth toned. Accent colors shall be used whenever necessary, but shall be subject to review by the Architectural Review Committee and approval of the City Planning Department.

G. Roof Projections and Design

1. All air conditioning units, ventilating equipment, other mechanical equipment and communications equipment shall be completely screened or enclosed with materials compatible with the building siding.
2. Projections shall be painted to match the roof or building.

H. Energy Conservation Standards

1. Purpose and Intent. The purpose of these energy conservation standards is to set forth cost-effective energy saving measures

which shall be incorporated into building design at the South Natomas Office Parks.

2. Standards:

- a. Buildings shall be designed to meet current state and federal energy requirements at the time of construction.
- b. Landscaping shall be designed to shade structure, walks, streets, drives and parking area so as to minimize surface heat gain and shall at a minimum comply with all current City of Sacramento standards.
- c. Site design shall take into consideration thermal and glare impact of construction materials on adjacent structures, vegetation and roadways.
- d. Outdoor lighting should be designed to provide the minimum level of site lighting commensurate with site security.
- e. Periodic energy-use audits shall be conducted by SMUD to identify wasteful consumption practices and opportunities for energy use reduction.

I. Temporary Structures

1. Temporary structures, including but not limited to trailers, mobile homes and other structures not affixed to the ground, are permitted only during construction and shall be removed promptly upon completion of the permanent building.
2. Such structures shall be as inconspicuous as possible and shall cause no inconvenience to the general public.

J. Loading Areas

Truck loading dock(s) shall be designed as an integral part of the structure(s) and shall not be oriented to any public right-of-way, freeway or adjacent residential area. The intent is to assure that these facilities are located in the most inconspicuous manner possible and that they do not create a nuisance.

K. Outside Storage

1. No open-air storage of materials, supplies, equipment, mobile equipment, finished or semi-finished products or articles of any nature shall be allowed. No outside storage of overnight delivery trucks or fleet vehicles shall be permitted. Storage is to be inside structures.

L. Garbage Services/Trash Enclosures

1. These facilities shall not create a nuisance and shall be located in the most inconspicuous manner possible.

2. All exterior garbage and refuse facilities shall be concealed by a screening wall of a material similar to and compatible with the building(s) it serves.
3. Such facilities shall relate appropriately to the building(s) and shall not be obtrusive in any way or detract from the building design theme.
4. Such facilities shall not be located adjacent to residences.

M. Utility Connections, Mechanical Equipment and Communications Equipment

1. Mechanical and communications equipment, utility meters and storage tanks shall not be visible.
2. If concealment within the building is not possible, then such utility elements shall be concealed by screen walls, which shall be appropriately landscaped.
3. All utility lines shall be underground.
4. All mechanical equipment shall be located so as not to cause nuisance or discomfort from noise, fumes, odors, etc.
5. Penthouse and mechanical and communications equipment screening shall be of a design and material similar to and compatible with those used in the related buildings.
6. Mechanical equipment shall not be located adjacent to residences.

N. On-Site Drainage

Each building site owner shall be required to provide adequate drainage facilities in accordance with City of Sacramento standards.

O. Exterior Fire Stairs

Unenclosed exterior fire stairs shall not be permitted.

P. Walkways and Courtyards

Walkway and courtyard materials shall be compatible with the exterior wall materials of adjacent buildings and with walk and path system standards of the PUD. Surfaces shall have a non-skid finish. Layout and design shall provide maximum comfort and safety to pedestrians.

Q. Miscellaneous Development Criteria

1. Non-residential structures in the office building and shopping center zones located within fifty feet of Gateway Oaks Drive, the extension of Gateway Oaks Drive in Natomas Eastside/Metropolitan Center, and any residential units shall not exceed two stories (thirty-five feet) in height.
2. The shopping center shall not be oriented to I-5.

R. Hazardous Materials

1. All buildings or structures containing hazardous materials shall be labeled at all doorways with easy to read signs that provide emergency response teams with information on the hazardous contents of the building or structure, and proper containment procedures. Labeling should be based on existing systems (such as the National Fire Protection Association 704 System) and approved by the City Fire Department.

VII. SIGN CRITERIA AND REGULATIONS

- A. The criteria will aid in eliminating excessive and confusing sign displays, preserve and enhance the appearance of the South Natomas Office Parks development, safeguard and enhance property values, and will encourage signage which by good design is integrated with and is harmonious to the buildings and sites that it occupies. These sign regulations are intended to compliment the City of Sacramento Sign Ordinance No. 2868, Fourth Series. In all cases, except for the maximum area for OB, the more restrictive requirements shall apply.

B. General Requirements

1. A sign program shall be submitted with individual project special permit applications or to the City Planning staff if submitted subsequent to the City Planning Commission special permit hearing. No sign shall be specifically designed or oriented to be viewed from the freeways and/or the American River and Sacramento River Parkways.
2. In no case shall flashing, moving or audible signs be permitted.
3. In no case shall the wording of signs describe the products sold, prices, or any type of advertising except as part of the occupant's trade name or insignia.
4. No signs shall be permitted on canopy roofs or building roofs.
5. No sign or any portion thereof may project above the building or top of the wall upon which it is mounted.
6. No signs perpendicular to the face of the building shall be permitted.
7. No exposed bulb signs are permitted.
8. No off-site signage shall be allowed.

C. Design Requirements

1. The location of signs shall be only as shown on the approved special permit site plan.

2. All electrical signs shall bear the UL label and their installation must comply with all local building and electrical codes.
3. No exposed conduit, tubing, or raceways will be permitted.
4. No exposed neon lighting shall be used on signs, symbols, or decorative elements.
5. All conductors, transformers, and other equipment shall be concealed.
6. All signs, fastenings, bolts, and clips shall be of hot dipped galvanized iron, stainless steel, aluminum, brass or bronze or black iron of any type will be permitted.
7. All exterior letters or signs exposed to the weather shall be mounted at least three fourths inch (3/4") from the building to permit proper dirt and water drainage.
8. Location of all openings for conduit and sleeves in sign panels of building shall be indicated by the sign contractor on drawings submitted to the Architectural Review Committee. Installation shall be in accordance with the approved drawings.
9. No signmakers' labels or other identification will be permitted on the exposed surface of signs, except those required by local ordinance which shall be located in an inconspicuous location.

D. Miscellaneous Requirements

1. Each occupant will be permitted to place upon each entrance to its premises not more than 144 square inches of lettering indicating hours of business, emergency telephone numbers, and proprietorship. No other window signs will be allowed.
2. Each occupant who has a non-consumer door for receiving merchandise may have uniformly applied on said door in a location, as directed by the Architectural Review Committee in two-inch high block letters the occupant's name and address. Where more than one occupant uses the same door, each name and address shall be applied. Color of letters will be selected by the Architectural Review Committee.
3. Occupants may install street address numbers as the U. S. Post Office requires in the exact location stipulated by the Architectural Review Committee. Size, type, and color of the numbers shall be stipulated by the Architectural Review Committee.

E. Special Signing

1. Floor signs, such as inserts into terrazzo, special tile treatment, etc., will be permitted with the occupant's lease line or property line if approved by the Architectural Review Committee.

- 2. Informational and directional signs relating to pedestrian and vehicular flows within the Metropolitan Center PUD project area shall conform to the standards of the City of Sacramento Sign Ordinance.
- 3. One standard sign denoting the name of the project, the marketing agent, the contractor, architect, and engineer shall be permitted on the site upon the commencement of construction. Said sign shall be permitted until such a time as a final City inspection of the building(s) designate said structure(s) fit for occupancy or the tenant is occupying said building, whichever occurs first. These signs must be kept in good repair.
- 4. A sign advertising the sale or lease of the site or building shall be permitted, but shall not exceed a maximum area of six (6) square feet.

F. Designated Park Project Identification Sign

- 1. One monument sign as defined by Section 3.520 of the City Sign Ordinance shall be allowed per designated office park. Directly illuminated signage is prohibited. Indirectly illuminated signage is subject to planning staff review and approval.
- 2. Maximum area of sign: 48 square feet.
- 3. Maximum height of sign: 12 feet from street or parking lot grade, whichever is lower.
- 4. Location: to be located at the major entry to the designated park. The sign may be placed in the setback area; however, it must be located farther than ten feet from the public right-of-way and from any driveway. No signs shall be allowed in the public right-of-way.

G. OB Office Building Zone

- 1. One monument sign as defined by Section 3.520 of the City Sign Ordinance allowed per parcel. Directly illuminated signage is prohibited. Indirectly illuminated signage is subject to planning staff review and approval.
- 2. Maximum area of sign: forty-eight square feet.
- 3. Maximum height: twelve feet from street grade or parking lot grade whichever is lower.
- 4. Location: to be located at the major entry/exit to the parcel. May be placed in the setback area; however, the sign must be located farther than ten feet from the public right-of-way and from any driveway.

H. SC Shopping Center Zone

1. Shopping Center Identification Sign. Each of the two shopping center sites shall be allowed one monument sign, each sign not to exceed twelve feet in height and forty-eight square feet in area. Said monument signs shall face on West El Camino Avenue. A monument sign may be located in the setback area; however, it shall be located farther than ten feet from the public right-of-way and from any driveway.
2. Tenant Occupancy Signs
 - a. One attached sign indicating the name for each occupancy shall be allowed. The color of the face of each sign shall be in keeping with the overall color scheme of the development.
 - b. Sign area shall be determined by the lineal frontage of each individual shop as follows:
 - 1) Width of sign, including logo, shall not exceed 60 percent of shop's width.
 - 2) Total vertical sign height shall not exceed twenty-four inches.
 - 3) Maximum letter height shall be limited to eighteen inches.

VIII. RESIDENTIAL DESIGN CRITERIA

In addition to the residential design criteria identified in the South Natomas Community Plan, the residential developments shall reflect the attached design criteria.

IX. ISSUANCE OF BUILDING PERMITS

Except as otherwise provided in the Special Permit or in the Resolution, no building permit shall be issued for any building or structure in a Planned Unit Development Project or a land area covered by a Planned Unit Development Designation until the plans submitted for the building permit have been reviewed by the Planning Director and he has determined that said plans conform to a valid special permit issued for a Planned Unit Development under this Section.

X. BUILDING OCCUPANCY

In accordance with Section 8 of the Zoning Ordinance, "no building or structure unit within a Planned Unit Development may be occupied until an inspection of the project has been made by the Planning Director to see that all conditions of the special permit have been complied with".

**METROPOLITAN CENTER
PUD CONDTIONS OF APPROVAL**

The applicant/property owner shall:

1. Amend City Agreement No. 82-054 to reflect the following land uses:
 - A. Office (existing: 45+ acres; 733,211 gross square feet) (additional: 34+ acres; 440,000 gross square feet).
 - B. Shopping Center:
 - 1) East of Gateway Oaks Drive (15 acres; 111,000 square feet).
 - C. Medium Density Residential (30+ acres; maximum average 145 dwelling units/net acre).
 - D. Park (11.5 acres).
 - E. Elementary School (10 acres).
2. Pay for the cost (connection fees) of providing water to the site.
3. Participate in the Transportation Systems Management Program referenced in the 1985 South Natomas Community Plan upon adoption of the TSM Implementation Program by the City.
4. Submit for review and approval with each special permit application, a transportation systems management program designed to reduce peak hour trips by a minimum of 20 percent.
5. Submit for review and approval with each special permit application for office development documentation demonstrating successful performance in implementation of TSM plans for the office park.
6. Submit with each special permit application a letter from Regional Transit verifying that Regional Transit has been consulted with regard to the impacts of the development design on transit efficiency and effectiveness in serving the site.
7. Join other South Natomas office/business park developers and employer tenants in working with the Sacramento County Air Pollution Control District to develop a mitigation program consisting of new traffic and air quality mitigation measures not already identified in the South Natomas Community Plan and EIR.
8. Work with the Private Industry Council to develop an employment plan for South Natomas and North Sacramento residents.
9. Contribute 50 percent of the cost associated with construction of the bridge located between I-80 and West El Camino Avenue across the Natomas Main Drainage Canal.

10. Install traffic signals at East Gateway Oaks Drive and West El Camino Avenue and West Gateway Oaks Drive and West El Camino Avenue (50 percent to be reimbursed by the City).
11. Install east-west street to connect Gateway Oaks Drive (east and west) approximately 500 feet north of West El Camino Avenue.
12. Cease construction if at any time during construction artifacts are discovered, until a qualified archaeologist can examine the find and recommend preservation or possible mitigation if the find is significant.
13. Participate in a facilities benefit assessment (FBA) district to be formed to finance capital improvements in South Natomas for a library, fire station and streets, including but not limited to roadways, curbs, gutters, sidewalks, drainage, traffic controls, lighting, bridges, culverts and interchanges. The exact amount of dollar participation by the FBA district for each of the improvements will be specified at the time that the district is formed. Fees paid to the district shall be based upon the relative benefit or need of the capital improvement realized by development depending upon land use.

DP:lr

ORDINANCE NO.

ADOPTED BY THE SACRAMENTO CITY COUNCIL ON DATE OF

AN ORDINANCE RELATING TO AMENDMENT OF THE
NATOMAS EASTSIDE (METROPOLITAN CENTER)
DEVELOPMENT AGREEMENT
(CITY AGREEMENT NO. _____)

SECTION 1.

This ordinance incorporates, and by this reference makes part hereof, that certain Second Amendment to the Development Agreement by and between the City of Sacramento and Sacramento Investment Company II, Ltd., dated February 11, 1986, for a project known as Metropolitan Center (hereafter "Amendment").

SECTION 2.

The mayor is hereby directed to execute said Amendment on behalf of the City of Sacramento.

SECTION 3.

The City Council adopts the following findings in conjunction with the approval of said Amendment:

A. The Amendment is consistent with the 1974 General Plan and 1986 South Natomas Community Plan. Prior to adoption of this ordinance, the City Council specifically amended the General Plan to provide for the development contemplated by this Amendment.

B. Public hearings considering this Amendment were held on February 21, March 7, and April 18, 1985, by the City Planning Commission, the advisory agency for the purposes of Government Code Section 65867. Subsequent public hearings considering this Amendment were held on June 10, June 17, June 24, July 1, July 15, July 22, September 10, November 6, and November 19, 1985, by the City Council.

C. Notice of intention to consider adoption of this Amendment at said public hearings was duly given in the manner proscribed in Government Code Section 65867.

SECTION 4.

The City Clerk shall record said Amendment no later than ten (10) days after the effective date of this ordinance as required by Government Code Section 65868.5.

PASSED FOR PUBLICATION:
ENACTED:
EFFECTIVE:

ANNE RUDIN, MAYOR

ATTEST:

CITY CLERK

PROOF OF PUBLICATION

(2015.5 CCP)

STATE OF CALIFORNIA

S.S.

County of Sacramento

2/11/86
33

This space is for the County Clerk's filing stamp

CERTIFIED AS TRUE COPY
OF Proof of Publication

DATE CERTIFIED

1/29/86
Gusnie Magana
CITY CLERK, CITY OF SACRAMENTO

I am the principal clerk of THE DAILY RECORDER, a newspaper of general circulation published in the City of Sacramento, County of Sacramento, and which newspaper has been adjudged a newspaper of general circulation by the Superior Court of the County of Sacramento, State of California, under date of May 2, 1913, Case Number 16,180 that the notice, of which the annexed is a printed copy (set in type not smaller than non-pareil) has been published in each regular and entire issue of said newspaper and not in any supplement therof on the following dates, to wit:

01/10

CIT, Ad #5858

I certify (or declare) under penalty of perjury that the foregoing is true and correct.

R. Colono

Signature

Dated JANUARY 10, 1986

THE DAILY RECORDER

1115 H Street, P.O. Box 1048
Sacramento, California 95805

(916) 444-2355

Mail Proof of Publication to:

CITY OF SACRAMENTO
City Clerk's Office
915 I Street, #203
Sacramento

(00299)

CA 95814

lication of

CITY OF SACRAMENTO ORDINANCES

On January 7, 1986, 1985, the following ordinances were considered by the Sacramento City Council. In accordance with Section 32, Sacramento City Charter, the titles are herein published:

ORDINANCES TO BE FINALLY CONSIDERED AT THE REGULAR MEETING OF January 14, 1986:

Ordinance amending the districts established by the Comprehensive Zoning Ordinance No. 2550, Fourth Series, as amended, by removing property located at the northwest corner of West El Camino Avenue and Orchard Lane from the Agriculture (A) zone and placing the same in the Single Family Residential (R-1 PUD) and Highway Commercial (HC-PUD) zone. (P-83397) (D1)

Ordinance amending the districts established by the Comprehensive Zoning Ordinance No. 2550, Fourth Series, as amended, by removing property located at the north side of Garden Highway, approximately 500 feet west of Gateway Oaks Drive from the Single Family (R-1 PUD) zone and placing the same in the Office Building (OB-PUD) zone. (P-83398) (D1)

Ordinance amending the districts established by the Comprehensive Zoning Ordinance No. 2550, Fourth Series, as amended, by removing property located at the west side of Northgate Boulevard, south of Turnstone Drive, from the Light Density Multiple Family (R-3 PUD) zone and placing the same in the Hospital (H-PUD) zone. (P-83401) (D1)

Ordinance amending the districts established by the Comprehensive Zoning Ordinance No. 2550, Fourth Series, as amended, by removing property located at the west side of Northgate Boulevard, south of I-80 from the Agriculture (A) zone and placing the same in the Office Building-Planned Unit Development (OB-PUD), Highway Commercial-Planned Unit Development (HC-PUD) and Single Family Residential-Planned Unit Development (R-1 PUD) zones. (P-83394) (D1)

Ordinance amending the districts established by the Comprehensive Zoning Ordinance No. 2550, Fourth Series, as amended, by removing property located at the north and south sides of West El Camino Avenue, west of the Natomas Main Drainage Canal, from the Agriculture (A) zone and placing the same in the Shopping Center (SC-PUD), Townhouse (R-1A PUD) and Single Family Residential (R-1 PUD) zones. (P-83391) (D1)

Ordinance amending the districts established by the Comprehensive Zoning Ordinance No. 2550, Fourth Series, as amended, by removing property located at the south side of I-80, approximately 2,500 feet west of Northgate Boulevard, from the Townhouse (R-1A) zone and placing the same in the Office Building-Planned Unit Development (OB-PUD) and Single Family Residential (R-1 PUD) zones. (P-83390) (D1)

Ordinance relating to Amendment of the Natomas Corporate Center Development Agreement (City Agreement No. 83034) (P-83333) (D1)

Ordinance amending the districts established by the Comprehensive Zoning Ordinance No. 2550, Fourth Series, as amended, by removing property located at the north side of West El Camino Avenue, west of I-5, from the Garden Apartment (R-2B PUD) zone and placing the same in the Office Building (OB-PUD) zone. (P-83328) (D1)

Ordinance relating to amendment of the Natomas Eastside/Metropolitan Center Development Agreement (City Agreement No. 82054) (P-83328) (D1)

Ordinance amending Zoning Districts in the South Natomas Community Plan Area established by Comprehensive Zoning Ordinance No. 2550, Fourth Series, as amended and described in Section 1. (M-719) (D1)

Ordinance amending the districts established by the Comprehensive Zoning Ordinance No. 2550, Fourth Series, as amended, by removing property located at 4780 87th Street from the Single Family, R-1 zone and placing the same in the Townhouse, R-1A zone. (P-85448) (D8)

Ordinance amending the districts established by the Comprehensive Zoning Ordinance No. 2550, Fourth Series, as amended, by removing property located at 7484 Pocket Road from the Townhouse, R-1A and Agriculture, A zone and placing the same in the Single Family, R-1 zone. (P-85435) (D8)

Ordinance amending the districts established by the Comprehensive Zoning Ordinance No. 2550, Fourth Series, as amended, by removing property located east of Franklin Boulevard, 3,000 more or less feet south of Ehrhardt Drive from the Agriculture, A zone and placing the same in the Single Family, R-1 zone. (P-84033) (D7)

Ordinance amending the districts established by the Comprehensive Zoning Ordinance No. 2550, Fourth Series, as amended, by removing property located at 5822 68th Street from the Single Family, R-1 zone and placing the same in the Townhouse, R-1A zone. (P-85402) (D8)

Ordinance amending the districts established by the Comprehensive Zoning Ordinance No. 2550, Fourth Series, as amended, by removing property located at the northeast corner of Florin Road and 24th Street from the Residential-Office, R-O zone and placing the same in the General Commercial, C-2 zone. (P-85452) (D7)

Res. authorizing initiation Proceedings for the Morrison Creek Reorganization and Detachment from Special Districts: Florin Fire Protection District, Florin-Elder Creek Cemetery District, Southgate Recreation and Park District, Metropolitan Storm Drain Maintenance District and Prazone of 55 acres of the 85 Acre Proposal Site to the Agriculture (A) Zone. (M-85091) (D6)

Ordinance establishing regulation and procedures for the removal of overhead utility facilities and the installation of underground facilities in underground utility districts. (Transportation and Community Development Committee)

Anyone interested in the full text of the above ordinances may contact the Office of the City Clerk, City Hall, 915 "I" Street, Room 203, phone (916) 449-5428.

Sacramento City Council, By: Lorraine Magana, City Clerk
Ad No: 5858
53021-January 10, 1986