



4

DEPARTMENT OF  
GENERAL SERVICES

CITY OF SACRAMENTO  
CALIFORNIA

OFFICE OF THE DIRECTOR

July 10, 1990

5730 - 24TH STREET  
BUILDING FOUR  
SACRAMENTO, CA  
95822-3699

916-449-5548

DIVISIONS:

COMMUNICATIONS  
FACILITY MANAGEMENT  
FLEET MANAGEMENT  
PROCUREMENT SERVICES

Budget and Finance  
Transportation and Community Development Committee  
Sacramento, California

Honorable Members In Session:

Subject: MEMORIAL AUDITORIUM RENOVATION DESIGN DEVELOPMENT  
SUBMITTAL AND AUTHORIZATION TO EXPEND FUNDS FOR  
CONSTRUCTION DOCUMENTS  
1515 J STREET, SACRAMENTO (PA46)

SUMMARY


The attached report presents the Design Development efforts of the Architects and recommends authorization of funding the construction drawings for renovation of the Memorial Auditorium.

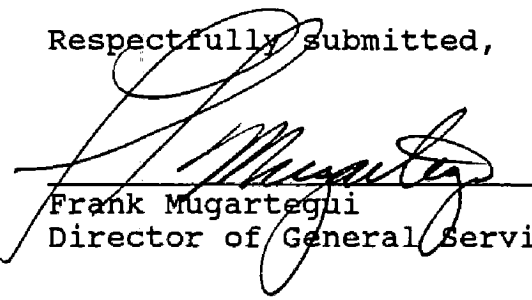
RECOMMENDATION

It is recommended that the Joint Committees review and recommend adoption by the full Council the attached report authorizing design and project administration services to complete the Construction Documents in preparation for bidding.

Respectfully submitted,

Recommendation Approved:

  
Solon Wisham, Jr.  
Assistant City Manager

  
Frank Mugartegui  
Director of General Services

July 17, 1990  
District #1

Note: Questions regarding this report should be referred to David Morgan, Senior Architect, Facility Management Division, 449-6745.

1



DEPARTMENT OF  
GENERAL SERVICES  
  
OFFICE OF THE DIRECTOR

CITY OF SACRAMENTO  
CALIFORNIA

5730 - 24TH STREET  
BUILDING FOUR  
SACRAMENTO, CA  
95822-3699

916-449-5548

July 10, 1990

City Council  
Sacramento, California

DIVISIONS:

COMMUNICATIONS  
FACILITY MANAGEMENT  
FLEET MANAGEMENT  
PROCUREMENT SERVICES

Honorable Members in Session:

Subject: MEMORIAL AUDITORIUM RENOVATION DESIGN DEVELOPMENT  
SUBMITTAL AND AUTHORIZATION TO EXPEND FUNDS FOR  
CONSTRUCTION DOCUMENTS  
1515 J STREET, SACRAMENTO, CALIFORNIA (PA46)

SUMMARY

This report requests the City Council accept the Design Development drawings and authorize expenditure of funds necessary to complete the Construction Documents required for renovation of the Memorial Auditorium, to include:

1. Authorize expenditure of funds for Phase III - Construction Document architectural services with Dreyfuss & Blackford Architects; and
2. Authorize City Manager to execute Supplemental Agreement #3 with 3D/International (Project Administrators) for support services related to completion of the Contract Document Phase.

BACKGROUND

On May 7, 1987, the City Council adopted Resolution No. 87-357 which approved: 1) the reuse of the Sacramento Memorial Auditorium as a fixed seat theater; and 2) the development of an architectural program, and related cost estimates for the reuse and rehabilitation of the building.

On June 30, 1987, City Council adopted Resolution No. 87-504 approving the establishment of a Sacramento Memorial Auditorium Design Advisory Committee. This committee consisted of representatives from performing arts, veterans and historic

City Council  
Re: Memorial Auditorium Renovation  
July 10, 1990  
Page 2

preservation organizations and a representative of the City Council. The purpose of the committee was to work with City staff and City consultants in the development of a program for the design of the theater.

On April 4, 1989 the City Council adopted resolution No. 89-260 authorizing:

1. The City Manager to execute a comprehensive professional consultant agreement with Dreyfuss & Blackford Services Architects for architectural design services related to renovation of the Memorial Auditorium for an amount not to exceed \$2,915,000.00; and
2. Authorize funding for the consultant to complete only Phase I - Schematic Design services for an amount not to exceed \$640,590.00, and direct City staff to report back to the Council for funding authorization prior to Consultant proceeding with additional work specified in their contract.

The Architects completed the Schematic Design Documents and submitted their design to the Design Advisory Committee and Design Review and Preservation Board for review and comment. Information and suggestions obtained from these meetings were incorporated in the design and submitted to the City Council as an information update on September 5, 1989. As a result of the informational update the City Council authorized the following:

1. The expenditure of funds necessary for completion of Phase II - Design Development Services by Dreyfuss and Blackford Architects, consistent with their Professional Service Agreement (Agreement #88201); and
2. The expenditure of funds necessary for 3D/International to complete Phase I services consistent with responsibilities in their Professional Services Agreement (Agreement #87388).

The Architects and Project Administrators have diligently executed their contract responsibilities during the Design Development Phase providing a renovation plan consistent with the architectural program commissioned by the City, while maintaining the original construction budget of \$24 million.

City Council  
Re: Memorial Auditorium Renovation  
July 10, 1990  
Page 3

In order to provide the City with maximum use the Architects have identified seven additive alternates. These alternates were outside the scope of the original project construction budget but can be added to the project.

**Alternate #1 Pipe Organ Restoration** **\$500,000**  
The current design of the theater incorporates adequate space for the pipe organ and support equipment. The additional cost identified for this additive alternate includes removal, renovation/restoration and reinstallation as described in the July 5, 1990 pipe organ report plus additional ductwork necessary to operate the pipe organ.

**Alternate #2 Reception Room** **\$ 90,000**  
The basic reception room configuration will be completed as part of the general construction. Funds identified for this alternate will provide room finishes, electrical, mechanical and support services.

**Alternate #3 Side Terraces** **\$ 80,000**  
The current design requires installation of additional exit doors on the east and west corridors to meet fire life and safety requirements. The side terraces would utilize the side exits to provide an area for patrons to congregate on the exterior of the building during intermissions.

**Alternate #4 Musicians Lounge** **\$ 56,000**  
This area is located in the basement adjacent to the orchestra pit, providing direct access for musicians. Funds for this alternate will allow completion of room finishes, restrooms, electrical, mechanical and support services.

**Alternate #5 Theatrical Lighting** **\$ 43,000**  
Lighting equipment identified for this alternate are not critical for operation of the theater, but allow flexibility in meeting demands typically imposed on similar facilities.

City Council  
Re: Memorial Auditorium Renovation  
July 10, 1990  
Page 4

**Alternate #6 Signage Kiosks** **\$ 40,500**  
Signs will be located at the corners of 15th & J  
and 16th & J Streets.

**Alternate #7 Fixed-Seating Allowance** **\$ 96,000**  
Funds identified for this alternate will increase  
the quality of hardware and material used in the  
seating to reduce long term maintenance and  
operations costs.

**Total of all Additive Alternates** **\$905,500**

Each additive alternate identified above will be documented within the scope of the Architects basic services agreement during the next phase of work. Detailed renovation specifications for the pipe organ would be provided under a separate agreement.

#### SCHEDULE

Exhibit B is a condensed version of the current project schedule. In order to maintain the current schedule, the design provided in this report will be presented to the Design Review and Preservation Board on July 16. Comments from the Design Review and Preservation Board will be provided to the committee during the July 17th presentation.

While the project schedule indicates uninterrupted activity through completion of construction, funding has not been identified for construction of the project.

#### FINANCIAL

The Architectural Professional Services Agreement approved by the Council on April 4, 1989 is divided into the following five phases:

Phase I	Schematic Design	\$ 640,590
Phase II	Design Development	\$ 617,838
Phase III	Contract Documents	\$1,001,290
Phase IV	Bidding	\$ 118,496
Phase V	Construction	<u>\$ 536,786</u>
	<b>Total</b>	<b>\$2,915,000</b>

City Council  
Re: Memorial Auditorium Renovation  
July 10, 1990  
Page 5

Authorization requested under this report will include Phase III Contract Document services and Supplemental Agreement #2 of \$9,150 for a total of \$1,010,440 to complete the Contract Document Phase incorporating information on all additive alternates. When combined with the architects previous authorizations, the total compensation will increase to \$2,311,868.

The Construction Administration Professional Services Agreement approved by the Council on June 8, 1988 is divided into the following two phases:

Phase I Schematic & Design Development	\$ 224,000
Phase II Construction Documents through Construction	\$ 971,000
Total	\$1,195,000

Authorization requested under this report will only include the Construction Document portion of Phase II services established in their original agreement as described in Supplemental Agreement #3, for a cost of \$336,795. When combined with the Project Administrators previous authorizations the total compensation will increase to \$936,449.

There is sufficient fund balance remaining in the Community Center Fund (419) for both Supplemental Agreements. The available fund balance for this project is \$1,620,580. No additional allocation of funds is required for approval of the Supplemental Agreements contained in this report.

The overall project budget will increase to \$39.4 million with inclusion of all additive alternates identified in this report.

MBE/WBE

The City's current MBE/WBE guidelines will be followed throughout completion of the design phase and will be incorporated in the bidding and constructions phases of the project.

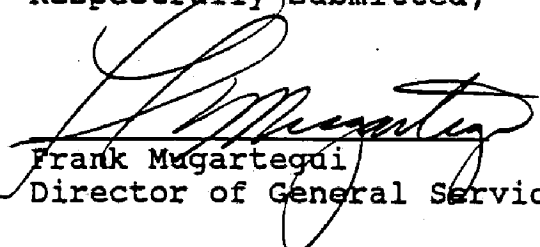
City Council  
Re: Memorial Auditorium Renovation  
July 10, 1990  
Page 6

RECOMMENDATION

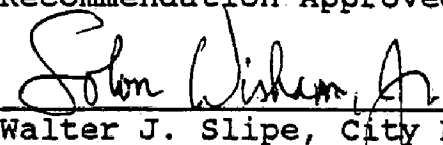
It is recommended that the City Council adopt the attached resolution:

1. Accept the Design Development Documents prepared by Dreyfuss & Blackford Architects in association with James Stewart Polshek & Partners adding seven additive alternates to the project scope;
2. Authorize funding for completion of Phase III -Construction Document services by Dreyfuss & Blackford Architects consistent with their original Professional Services Agreement;
3. Authorize the City Manager to execute Supplemental Agreement #2 with Dreyfuss & Blackford for preparation of Contract Documents for additive alternates at a cost not to exceed Nine Thousand One Hundred Fifty Dollars (\$9,150); and
4. Authorize the City Manager to execute Supplemental Agreement #3 with 3D/International limiting their scope of Phase II services to Construction Documents for a cost not to exceed Three Hundred Thirty Six Thousand Seven Hundred Ninety Five and No/Dollars (\$336,795).

Respectfully submitted,

  
Frank Mugartegui  
Director of General Services

Recommendation Approved:

  
Walter J. Slipe, City Manager

For:  
July 17, 1990  
District #1

Note: Questions regarding this report should be referred to David Morgan, Senior Architect, Facility Management Division, 449-6745.

Attachment

# RESOLUTION NO.

ADOPTED BY THE SACRAMENTO CITY COUNCIL

ON DATE OF July 17, 1990

## RESOLUTION AUTHORIZING FUNDING FOR CONSTRUCTION DOCUMENT SERVICES AND CITY MANAGER EXECUTION OF SUPPLEMENTAL SERVICE AGREEMENTS FOR RENOVATION OF THE MEMORIAL AUDITORIUM

BE IT RESOLVED BY THE COUNCIL OF THE CITY OF SACRAMENTO:

1. Accept the Design Development Documentation prepared by Dreyfuss & Blackford Architects in association with James Stewart Polshek & Partners adding seven additive alternates to the project scope;
2. Authorize funding not to exceed One Million One Thousand Two Hundred Ninety and No/100 dollars (\$1,001,290.00) for execution of Phase III - Construction Document Services by Dreyfuss & Blackford Architects, consistent with their original Professional Services Agreement (#88201);
3. Authorize the City Manager to execute Supplemental Agreement #2 with Dreyfuss & Blackford Architects for preparation of contract documents for additive alternates at a cost not to exceed Nine Thousand One Hundred Fifty dollars (\$9,150); and
4. Authorize the City Manager to execute Supplemental Agreement #3 with 3/D/International limiting their scope of Phase II services to construction documents for a cost not to exceed Three Hundred Thirty Six Thousand Seven Hundred Ninety Five and No/100 dollars (\$336,795).

\_\_\_\_\_  
MAYOR

ATTEST:

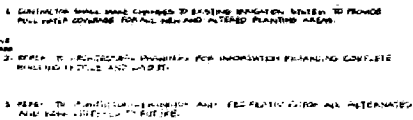
\_\_\_\_\_  
CITY CLERK

\_\_\_\_\_  
FOR CITY CLERK USE ONLY

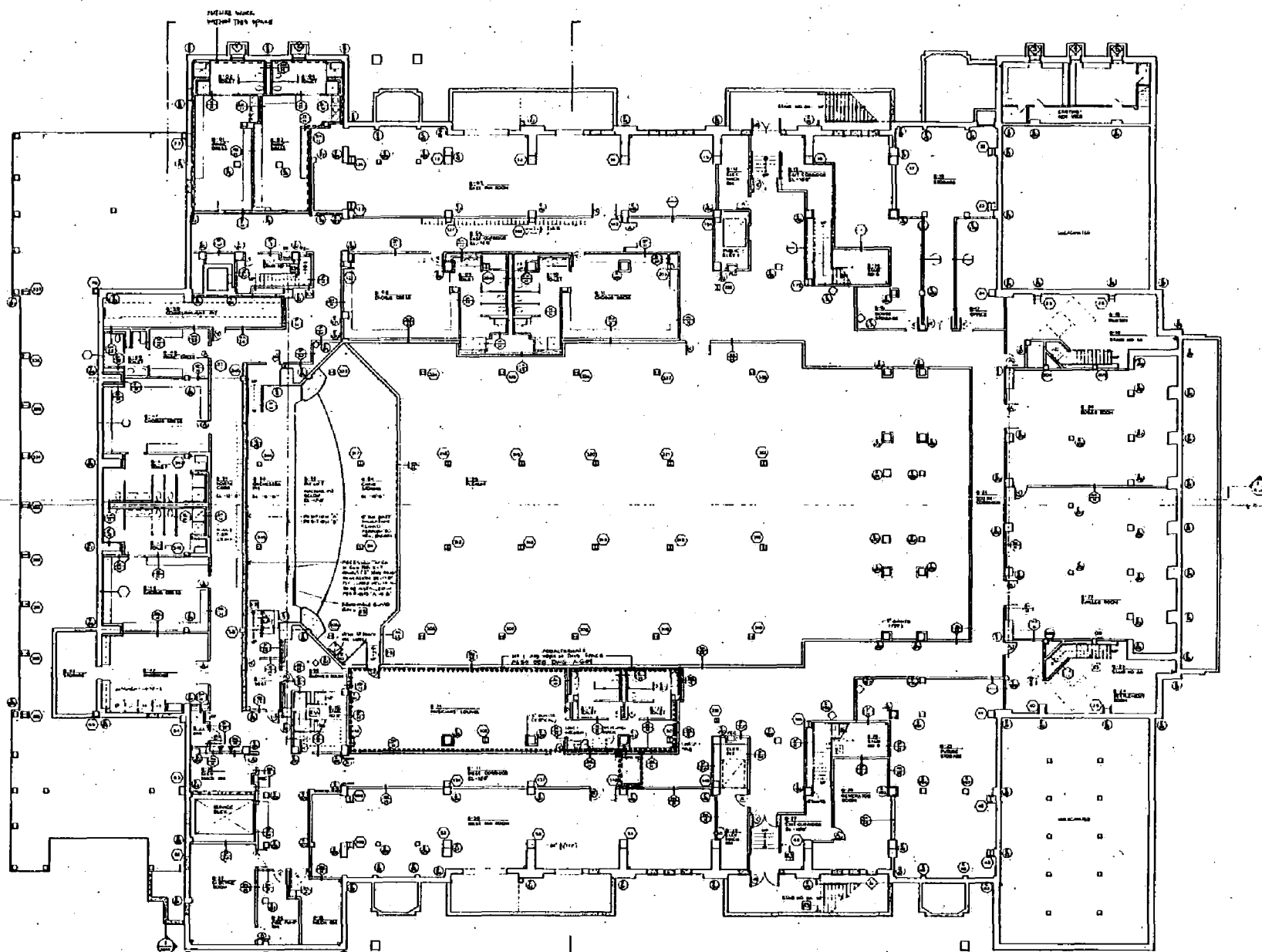
RESOLUTION NO.: \_\_\_\_\_

DATE ADOPTED: \_\_\_\_\_

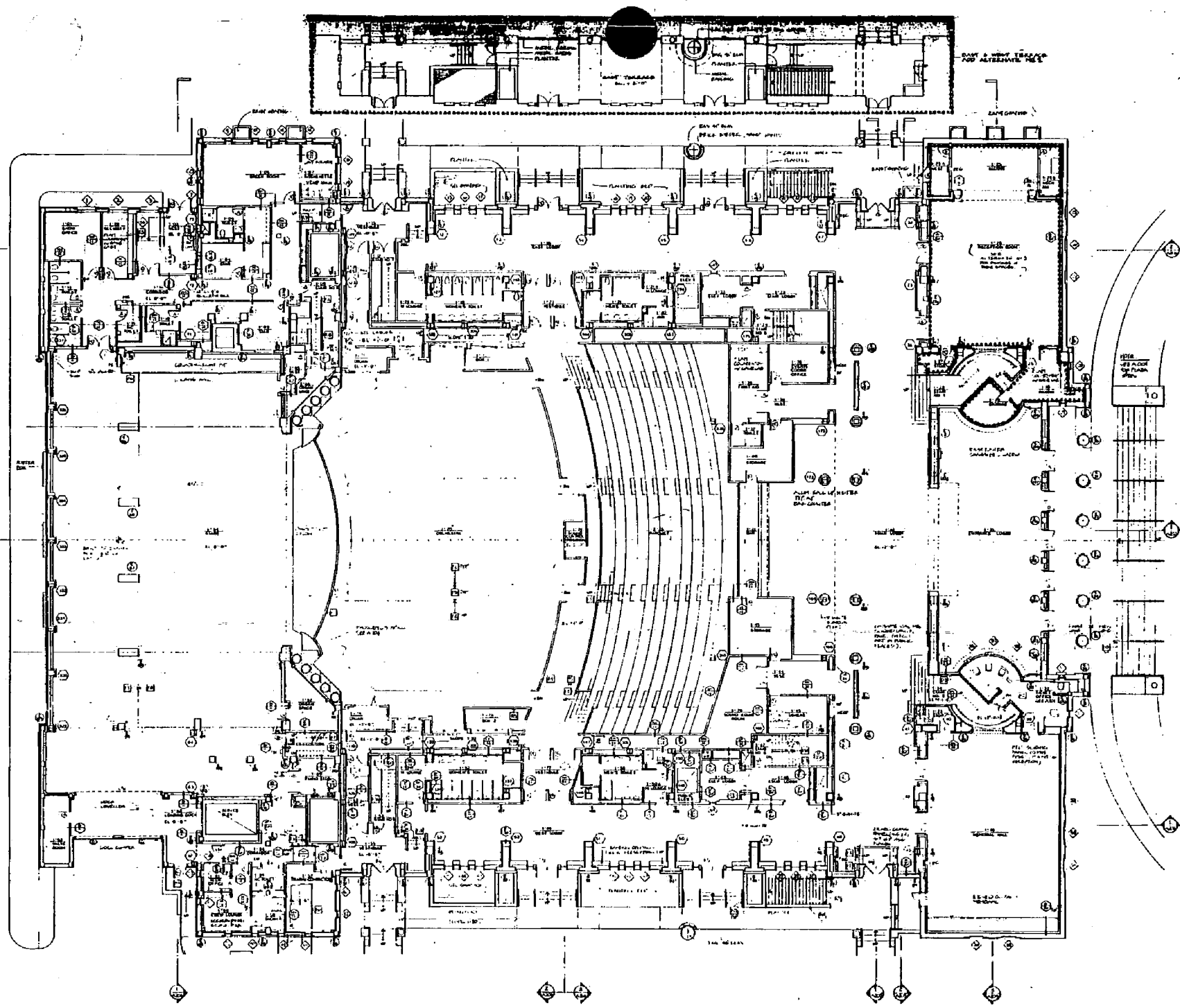




## LANDSCAPE PLAN



# BASEMEN. PLAN



ORCHESTRA PLAN

**S.M.E.**  
SPECIALIZED MECHANICAL ENGINEERS

**PROJECT DATA**

Project Name: [illegible]  
 Location: [illegible]  
 Date: [illegible]  
 Drawn by: [illegible]  
 Checked by: [illegible]

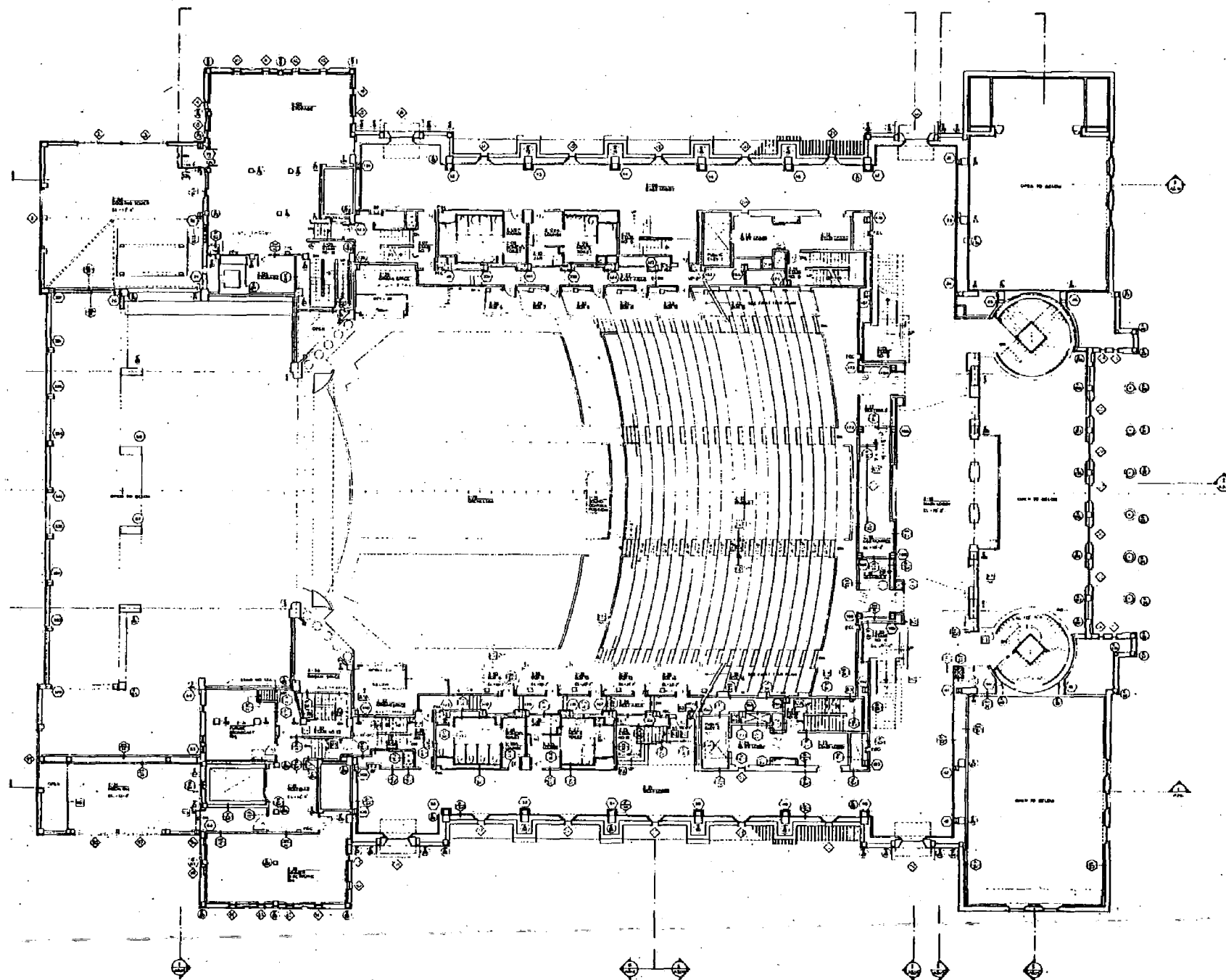
**REVISIONS**

NO.	DESCRIPTION	DATE
1	[illegible]	[illegible]
2	[illegible]	[illegible]
3	[illegible]	[illegible]
4	[illegible]	[illegible]
5	[illegible]	[illegible]
6	[illegible]	[illegible]
7	[illegible]	[illegible]
8	[illegible]	[illegible]
9	[illegible]	[illegible]
10	[illegible]	[illegible]
11	[illegible]	[illegible]
12	[illegible]	[illegible]
13	[illegible]	[illegible]
14	[illegible]	[illegible]
15	[illegible]	[illegible]
16	[illegible]	[illegible]
17	[illegible]	[illegible]
18	[illegible]	[illegible]
19	[illegible]	[illegible]
20	[illegible]	[illegible]
21	[illegible]	[illegible]
22	[illegible]	[illegible]
23	[illegible]	[illegible]
24	[illegible]	[illegible]
25	[illegible]	[illegible]
26	[illegible]	[illegible]
27	[illegible]	[illegible]
28	[illegible]	[illegible]
29	[illegible]	[illegible]
30	[illegible]	[illegible]
31	[illegible]	[illegible]
32	[illegible]	[illegible]
33	[illegible]	[illegible]
34	[illegible]	[illegible]
35	[illegible]	[illegible]
36	[illegible]	[illegible]
37	[illegible]	[illegible]
38	[illegible]	[illegible]
39	[illegible]	[illegible]
40	[illegible]	[illegible]
41	[illegible]	[illegible]
42	[illegible]	[illegible]
43	[illegible]	[illegible]
44	[illegible]	[illegible]
45	[illegible]	[illegible]
46	[illegible]	[illegible]
47	[illegible]	[illegible]
48	[illegible]	[illegible]
49	[illegible]	[illegible]
50	[illegible]	[illegible]
51	[illegible]	[illegible]
52	[illegible]	[illegible]
53	[illegible]	[illegible]
54	[illegible]	[illegible]
55	[illegible]	[illegible]
56	[illegible]	[illegible]
57	[illegible]	[illegible]
58	[illegible]	[illegible]
59	[illegible]	[illegible]
60	[illegible]	[illegible]
61	[illegible]	[illegible]
62	[illegible]	[illegible]
63	[illegible]	[illegible]
64	[illegible]	[illegible]
65	[illegible]	[illegible]
66	[illegible]	[illegible]
67	[illegible]	[illegible]
68	[illegible]	[illegible]
69	[illegible]	[illegible]
70	[illegible]	[illegible]
71	[illegible]	[illegible]
72	[illegible]	[illegible]
73	[illegible]	[illegible]
74	[illegible]	[illegible]
75	[illegible]	[illegible]
76	[illegible]	[illegible]
77	[illegible]	[illegible]
78	[illegible]	[illegible]
79	[illegible]	[illegible]
80	[illegible]	[illegible]
81	[illegible]	[illegible]
82	[illegible]	[illegible]
83	[illegible]	[illegible]
84	[illegible]	[illegible]
85	[illegible]	[illegible]
86	[illegible]	[illegible]
87	[illegible]	[illegible]
88	[illegible]	[illegible]
89	[illegible]	[illegible]
90	[illegible]	[illegible]
91	[illegible]	[illegible]
92	[illegible]	[illegible]
93	[illegible]	[illegible]
94	[illegible]	[illegible]
95	[illegible]	[illegible]
96	[illegible]	[illegible]
97	[illegible]	[illegible]
98	[illegible]	[illegible]
99	[illegible]	[illegible]
100	[illegible]	[illegible]

**LEGEND**

1. [illegible]  
 2. [illegible]  
 3. [illegible]  
 4. [illegible]  
 5. [illegible]  
 6. [illegible]  
 7. [illegible]  
 8. [illegible]  
 9. [illegible]  
 10. [illegible]  
 11. [illegible]  
 12. [illegible]  
 13. [illegible]  
 14. [illegible]  
 15. [illegible]  
 16. [illegible]  
 17. [illegible]  
 18. [illegible]  
 19. [illegible]  
 20. [illegible]  
 21. [illegible]  
 22. [illegible]  
 23. [illegible]  
 24. [illegible]  
 25. [illegible]  
 26. [illegible]  
 27. [illegible]  
 28. [illegible]  
 29. [illegible]  
 30. [illegible]  
 31. [illegible]  
 32. [illegible]  
 33. [illegible]  
 34. [illegible]  
 35. [illegible]  
 36. [illegible]  
 37. [illegible]  
 38. [illegible]  
 39. [illegible]  
 40. [illegible]  
 41. [illegible]  
 42. [illegible]  
 43. [illegible]  
 44. [illegible]  
 45. [illegible]  
 46. [illegible]  
 47. [illegible]  
 48. [illegible]  
 49. [illegible]  
 50. [illegible]  
 51. [illegible]  
 52. [illegible]  
 53. [illegible]  
 54. [illegible]  
 55. [illegible]  
 56. [illegible]  
 57. [illegible]  
 58. [illegible]  
 59. [illegible]  
 60. [illegible]  
 61. [illegible]  
 62. [illegible]  
 63. [illegible]  
 64. [illegible]  
 65. [illegible]  
 66. [illegible]  
 67. [illegible]  
 68. [illegible]  
 69. [illegible]  
 70. [illegible]  
 71. [illegible]  
 72. [illegible]  
 73. [illegible]  
 74. [illegible]  
 75. [illegible]  
 76. [illegible]  
 77. [illegible]  
 78. [illegible]  
 79. [illegible]  
 80. [illegible]  
 81. [illegible]  
 82. [illegible]  
 83. [illegible]  
 84. [illegible]  
 85. [illegible]  
 86. [illegible]  
 87. [illegible]  
 88. [illegible]  
 89. [illegible]  
 90. [illegible]  
 91. [illegible]  
 92. [illegible]  
 93. [illegible]  
 94. [illegible]  
 95. [illegible]  
 96. [illegible]  
 97. [illegible]  
 98. [illegible]  
 99. [illegible]  
 100. [illegible]

# PARQUE LAN



SMIA

City of Baltimore  
Baltimore, Maryland 21201  
1000 John Street, 10th Floor  
Baltimore, Maryland 21201

Address:  
 Shirley M. H. H. H. H. H.  
 1234 Main St.  
 Chicago, Ill. 60601  
 or telephone 312-  
 1234 5678  
 John Doe, Jr. and Mary  
 1234 Main St.  
 Chicago, Ill. 60601

Shirley S. Perkins  
7120 Sunset Blvd., Suite 200  
Los Angeles, California 90028

2100 Jackson Blvd., Suite 100  
Berwyn, Illinois 60404

7000 Fulton St., Suite 1020  
Northbrook, Illinois 60062

Chris Englund

These Covered /  
Sightings Continue

**Author's Contact:**  
Steven J. Lyons / Assistant Dir.  
of Child Support  
San Francisco, California 94113

Landings, 1981-82  
Dunsmuir & Associates  
470 First St. S.W.  
San Francisco, California 94103

1

1

1

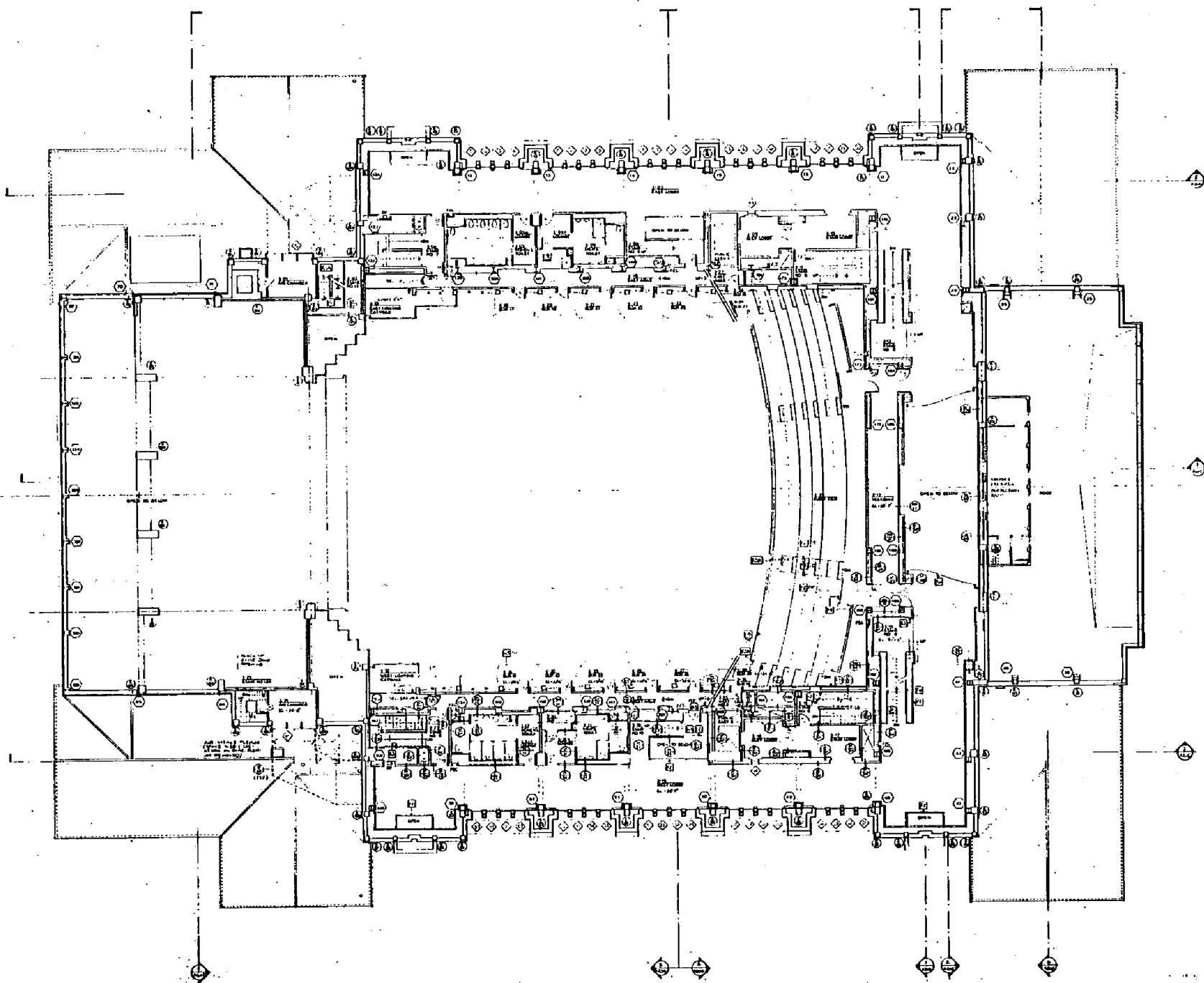



[illegible]

**PLAQUE & PLAN**

1992





1st TIER PLAN

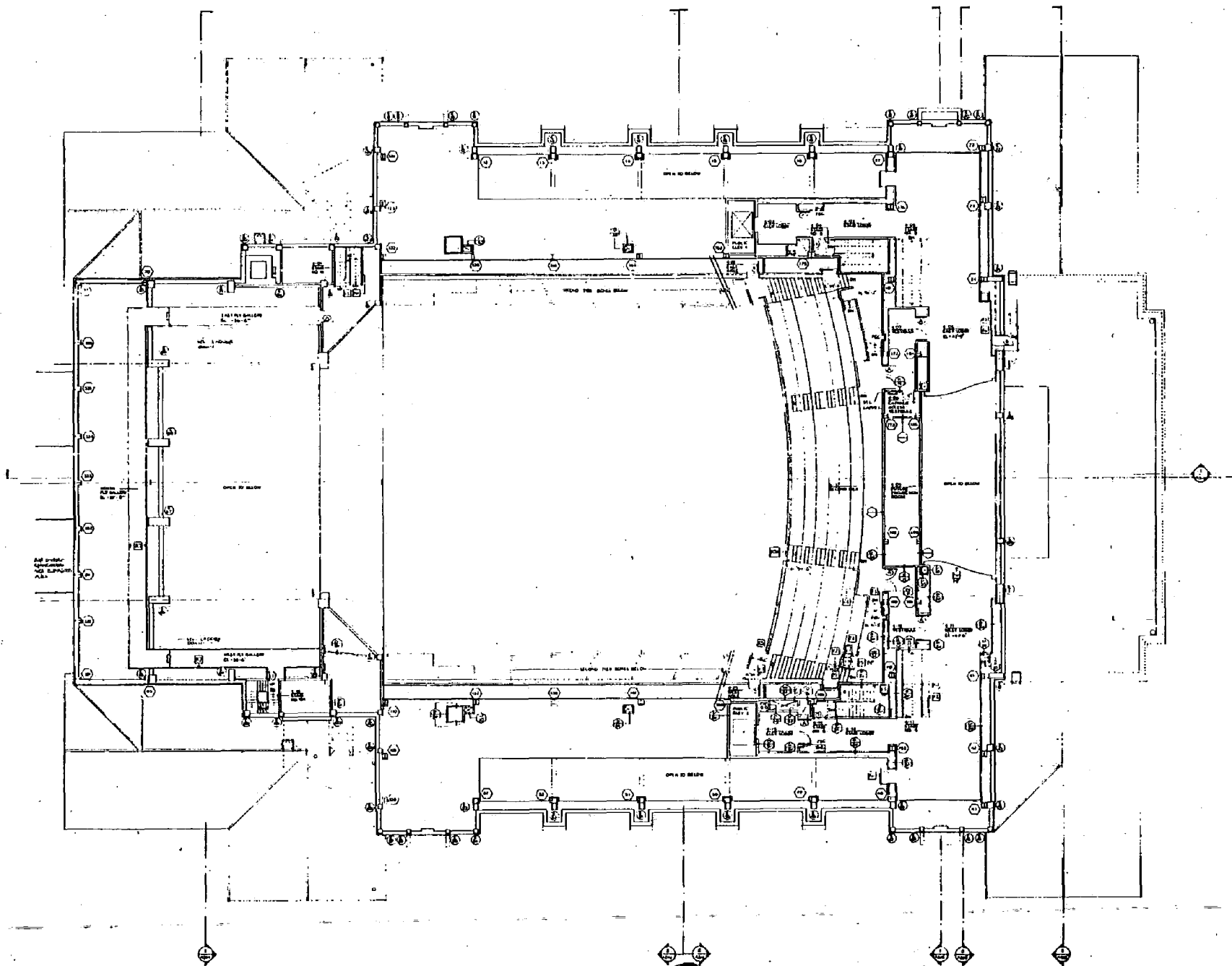
**1st TIER PLAN**

**Legend:**

- 1. Seating Area
- 2. Service Area
- 3. Rest Area
- 4. Bar
- 5. Kitchen
- 6. Rest Area
- 7. Service Area
- 8. Seating Area
- 9. Service Area
- 10. Rest Area
- 11. Bar
- 12. Kitchen
- 13. Rest Area
- 14. Service Area
- 15. Seating Area
- 16. Service Area
- 17. Rest Area
- 18. Bar
- 19. Kitchen
- 20. Rest Area
- 21. Service Area
- 22. Seating Area
- 23. Service Area
- 24. Rest Area
- 25. Bar
- 26. Kitchen
- 27. Rest Area
- 28. Service Area
- 29. Seating Area
- 30. Service Area
- 31. Rest Area
- 32. Bar
- 33. Kitchen
- 34. Rest Area
- 35. Service Area
- 36. Seating Area
- 37. Service Area
- 38. Rest Area
- 39. Bar
- 40. Kitchen
- 41. Rest Area
- 42. Service Area
- 43. Seating Area
- 44. Service Area
- 45. Rest Area
- 46. Bar
- 47. Kitchen
- 48. Rest Area
- 49. Service Area
- 50. Seating Area
- 51. Service Area
- 52. Rest Area
- 53. Bar
- 54. Kitchen
- 55. Rest Area
- 56. Service Area
- 57. Seating Area
- 58. Service Area
- 59. Rest Area
- 60. Bar
- 61. Kitchen
- 62. Rest Area
- 63. Service Area
- 64. Seating Area
- 65. Service Area
- 66. Rest Area
- 67. Bar
- 68. Kitchen
- 69. Rest Area
- 70. Service Area
- 71. Seating Area
- 72. Service Area
- 73. Rest Area
- 74. Bar
- 75. Kitchen
- 76. Rest Area
- 77. Service Area
- 78. Seating Area
- 79. Service Area
- 80. Rest Area
- 81. Bar
- 82. Kitchen
- 83. Rest Area
- 84. Service Area
- 85. Seating Area
- 86. Service Area
- 87. Rest Area
- 88. Bar
- 89. Kitchen
- 90. Rest Area
- 91. Service Area
- 92. Seating Area
- 93. Service Area
- 94. Rest Area
- 95. Bar
- 96. Kitchen
- 97. Rest Area
- 98. Service Area
- 99. Seating Area
- 100. Service Area

**Notes:**

- 1. Seating Area
- 2. Service Area
- 3. Rest Area
- 4. Bar
- 5. Kitchen
- 6. Rest Area
- 7. Service Area
- 8. Seating Area
- 9. Service Area
- 10. Rest Area
- 11. Bar
- 12. Kitchen
- 13. Rest Area
- 14. Service Area
- 15. Seating Area
- 16. Service Area
- 17. Rest Area
- 18. Bar
- 19. Kitchen
- 20. Rest Area
- 21. Service Area
- 22. Seating Area
- 23. Service Area
- 24. Rest Area
- 25. Bar
- 26. Kitchen
- 27. Rest Area
- 28. Service Area
- 29. Seating Area
- 30. Service Area
- 31. Rest Area
- 32. Bar
- 33. Kitchen
- 34. Rest Area
- 35. Service Area
- 36. Seating Area
- 37. Service Area
- 38. Rest Area
- 39. Bar
- 40. Kitchen
- 41. Rest Area
- 42. Service Area
- 43. Seating Area
- 44. Service Area
- 45. Rest Area
- 46. Bar
- 47. Kitchen
- 48. Rest Area
- 49. Service Area
- 50. Seating Area
- 51. Service Area
- 52. Rest Area
- 53. Bar
- 54. Kitchen
- 55. Rest Area
- 56. Service Area
- 57. Seating Area
- 58. Service Area
- 59. Rest Area
- 60. Bar
- 61. Kitchen
- 62. Rest Area
- 63. Service Area
- 64. Seating Area
- 65. Service Area
- 66. Rest Area
- 67. Bar
- 68. Kitchen
- 69. Rest Area
- 70. Service Area
- 71. Seating Area
- 72. Service Area
- 73. Rest Area
- 74. Bar
- 75. Kitchen
- 76. Rest Area
- 77. Service Area
- 78. Seating Area
- 79. Service Area
- 80. Rest Area
- 81. Bar
- 82. Kitchen
- 83. Rest Area
- 84. Service Area
- 85. Seating Area
- 86. Service Area
- 87. Rest Area
- 88. Bar
- 89. Kitchen
- 90. Rest Area
- 91. Service Area
- 92. Seating Area
- 93. Service Area
- 94. Rest Area
- 95. Bar
- 96. Kitchen
- 97. Rest Area
- 98. Service Area
- 99. Seating Area
- 100. Service Area



2nd TIER LAN

**SMA**

City of Seattle  
Department of Public Works  
Engineering Division

Project:  
Seattle Public Library  
2000 4th Avenue  
Seattle, WA 98101  
Project No. 98-001  
Drawing No. 98-001-001

Architect:  
Skidmore, Owings & Merrill  
300 Madison Avenue  
New York, NY 10017  
Project No. 98-001  
Drawing No. 98-001-001

Structural Engineer:  
HKS Associates, Inc.  
1000 1st Avenue  
Seattle, WA 98101  
Project No. 98-001  
Drawing No. 98-001-001

Mechanical Engineer:  
HKS Associates, Inc.  
1000 1st Avenue  
Seattle, WA 98101  
Project No. 98-001  
Drawing No. 98-001-001

Electrical Engineer:  
HKS Associates, Inc.  
1000 1st Avenue  
Seattle, WA 98101  
Project No. 98-001  
Drawing No. 98-001-001

Civil Engineer:  
HKS Associates, Inc.  
1000 1st Avenue  
Seattle, WA 98101  
Project No. 98-001  
Drawing No. 98-001-001

Interior Designer:  
HKS Associates, Inc.  
1000 1st Avenue  
Seattle, WA 98101  
Project No. 98-001  
Drawing No. 98-001-001

Architectural Consultant:  
HKS Associates, Inc.  
1000 1st Avenue  
Seattle, WA 98101  
Project No. 98-001  
Drawing No. 98-001-001

Landscaping Consultant:  
HKS Associates, Inc.  
1000 1st Avenue  
Seattle, WA 98101  
Project No. 98-001  
Drawing No. 98-001-001

SECOND TIER  
PLAN

Approved by: [Signature]

City of Birmingham  
Public Information Bureau  
1736 2nd Ave., Bldg. C-2  
Birmingham, Alabama 35203

August  
 Chapter Standard Antism  
 1945 Pictorial Ed.  
 International Children, 1944  
 In Advertising with  
 James Brown, Robert and Norman  
 121 1st St. N.W.  
 New York, New York 10004

**Electrical Engineer**  
**Shuttle & Shuttle Assembly**  
 1700 Pioneer Blvd., Room 200  
 Hawthorne, California 90230

Michael Eugene  
Civil Engineering Consultant, Inc.  
7155 Folsom Blvd., Suite 200  
Oakland, California 94620

**Electrical Engineer**  
Engineering, Electrical  
1200 Fulton St., Rm. 1010  
Baltimore, Md. 21201

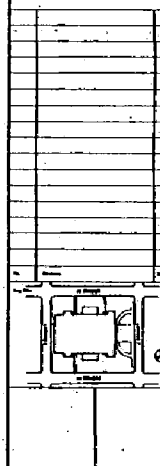
Chai Engman  
 Sales & Marketing  
 1720 S. Street  
 San Mateo, California 94401

Thermal Expansion & Contraction

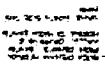
**Accounting Consultants**  
Partners / Lawyers / Accountants Int.  
45 Oak Grove " "

**Language Institute**  
**Classes & Seminars**  
**224 Franklin Street**


Don. Francesco, 5.250.000.000 1912 13.



## ROOF PLAN



# VIA S



**SMA**  
 SACRAMENTO METROPOLITAN ARCHDIOCESE  
 1000 J Street, Suite 200  
 Sacramento, CA 95811  
 Tel: 916.441.1234  
 Fax: 916.441.1235  
 Email: sma@sma.org

**Project:**

Project Name: **St. Ignace Church**  
 Project Number: **00000000**  
 Project Location: **1000 J Street, Suite 200**  
 Project Date: **01/01/2000**  
 Project Status: **Completed**

**Architect:**

Architect Name: **St. Ignace Church**  
 Architect Address: **1000 J Street, Suite 200**  
 Architect Phone: **916.441.1234**  
 Architect Email: **sma@sma.org**

**Engineer:**

Engineer Name: **St. Ignace Church**  
 Engineer Address: **1000 J Street, Suite 200**  
 Engineer Phone: **916.441.1234**  
 Engineer Email: **sma@sma.org**

**Contractor:**

Contractor Name: **St. Ignace Church**  
 Contractor Address: **1000 J Street, Suite 200**  
 Contractor Phone: **916.441.1234**  
 Contractor Email: **sma@sma.org**

**Notes:**

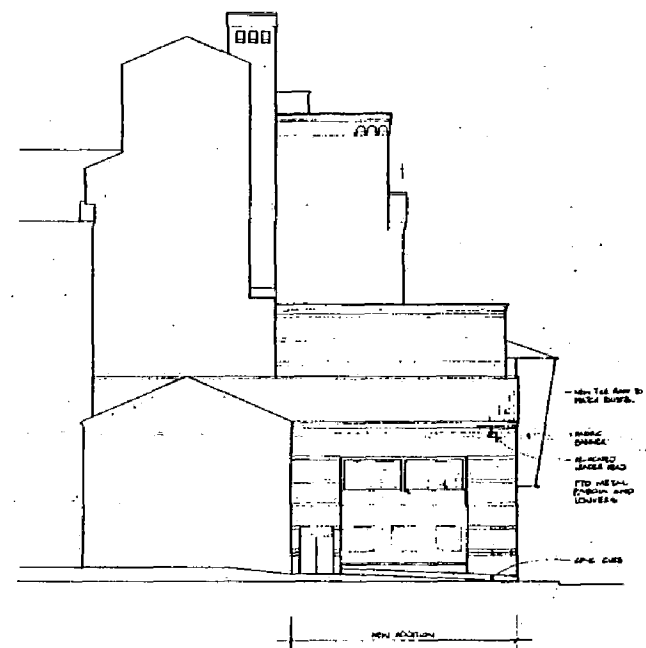
1. See Notes to Plans.  
 2. See Notes to Plans.  
 3. See Notes to Plans.  
 4. See Notes to Plans.  
 5. See Notes to Plans.  
 6. See Notes to Plans.  
 7. See Notes to Plans.  
 8. See Notes to Plans.  
 9. See Notes to Plans.  
 10. See Notes to Plans.

**Legend:**

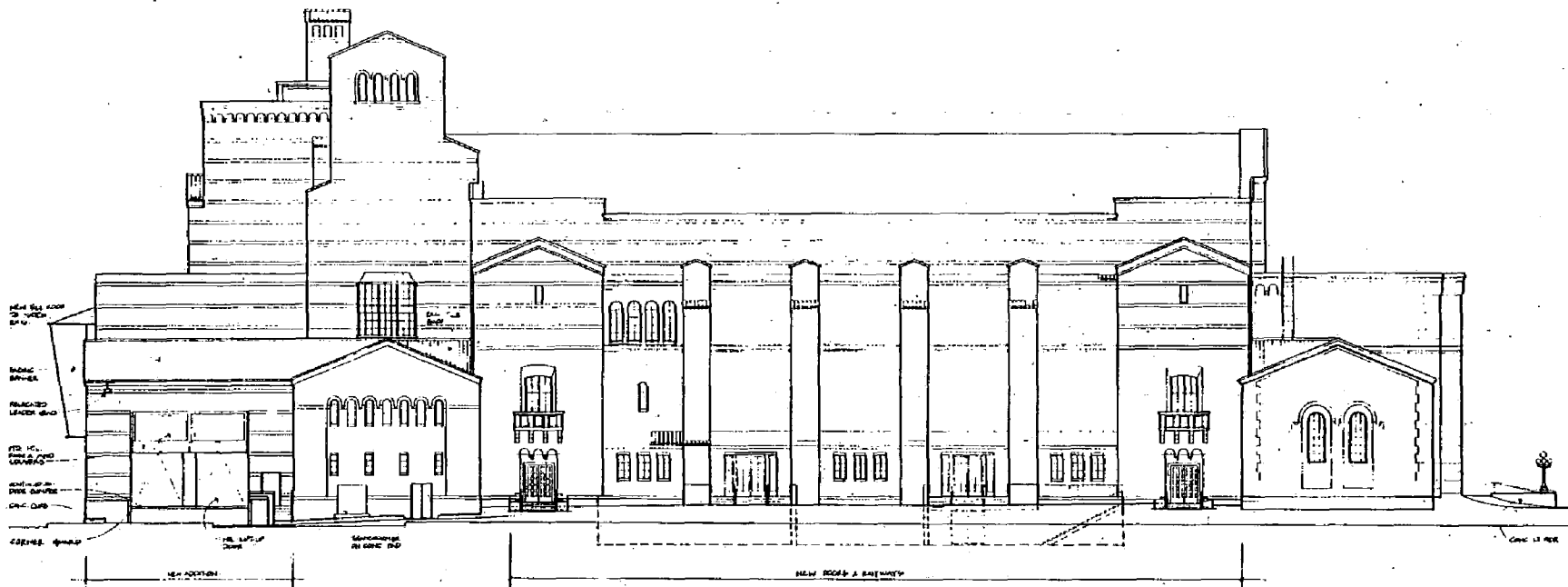
1. See Notes to Plans.  
 2. See Notes to Plans.  
 3. See Notes to Plans.  
 4. See Notes to Plans.  
 5. See Notes to Plans.  
 6. See Notes to Plans.  
 7. See Notes to Plans.  
 8. See Notes to Plans.  
 9. See Notes to Plans.  
 10. See Notes to Plans.

**Index:**

1. See Notes to Plans.  
 2. See Notes to Plans.  
 3. See Notes to Plans.  
 4. See Notes to Plans.  
 5. See Notes to Plans.  
 6. See Notes to Plans.  
 7. See Notes to Plans.  
 8. See Notes to Plans.  
 9. See Notes to Plans.  
 10. See Notes to Plans.



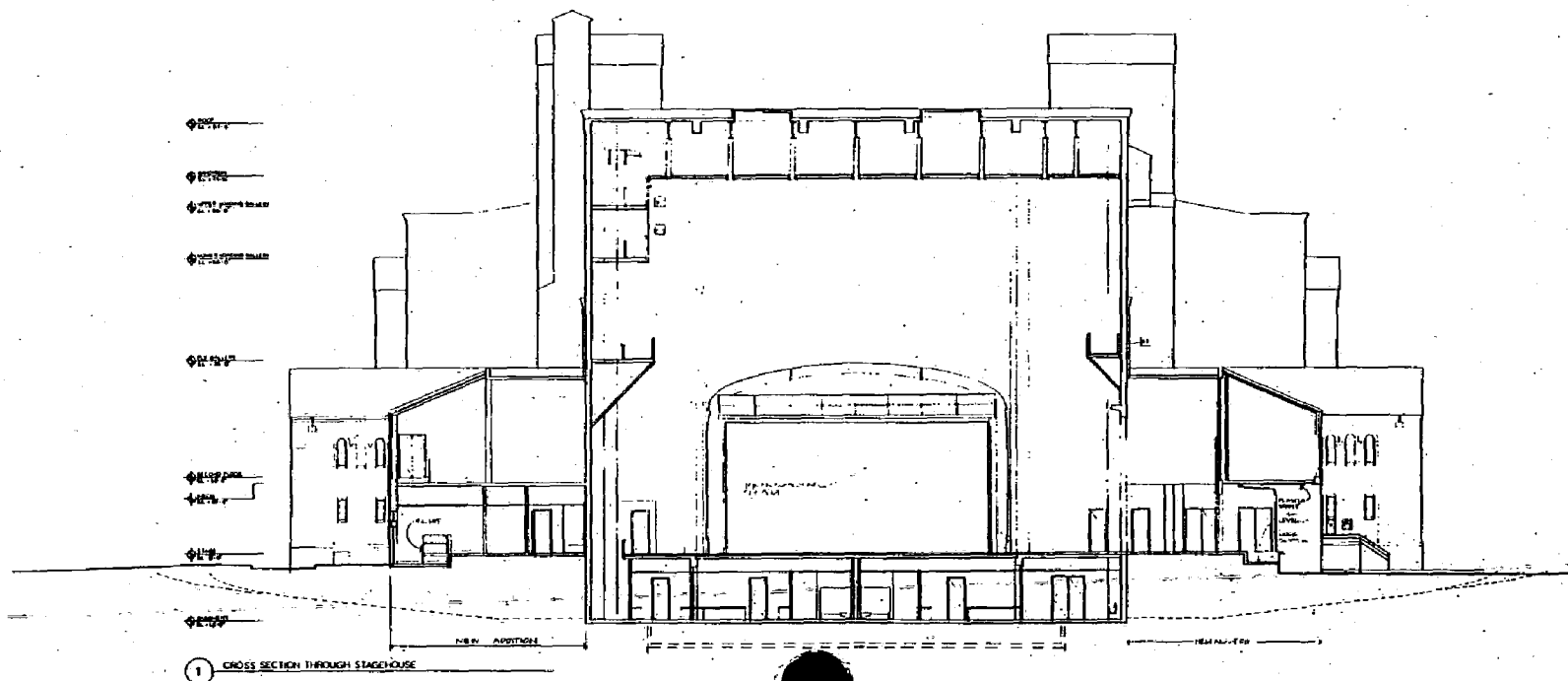
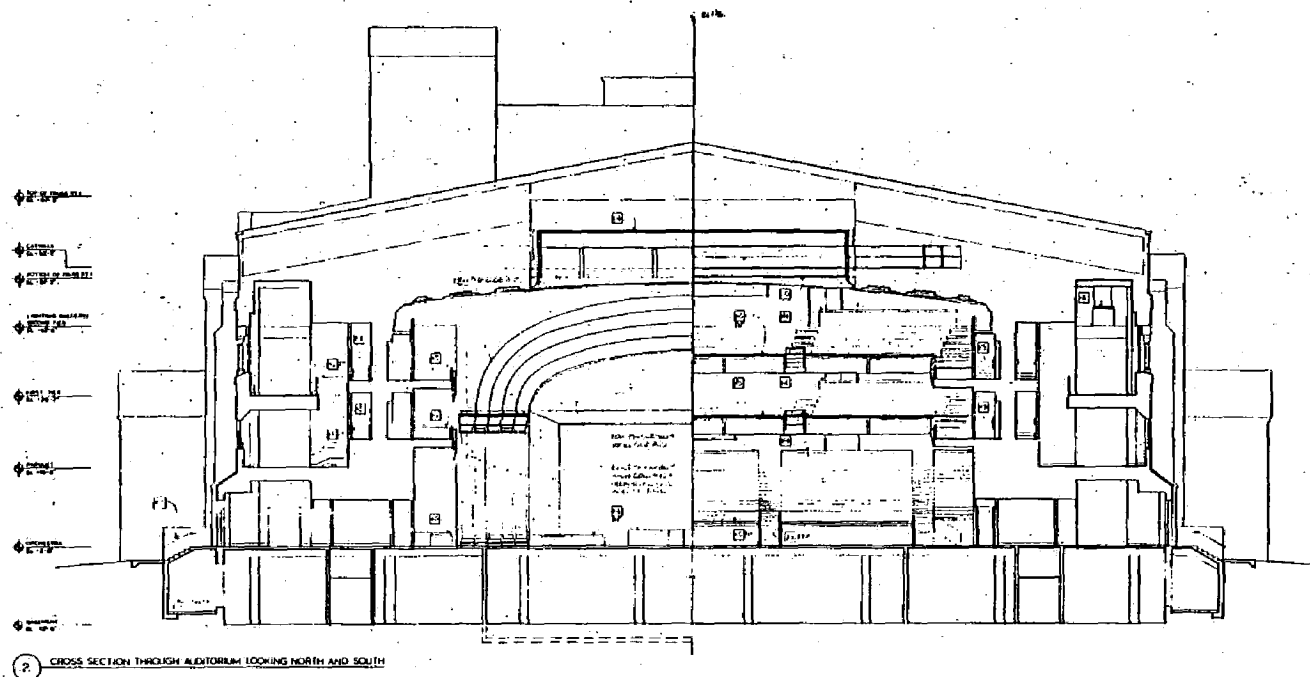
2 EAST ELEVATION



1 WEST ELEVATION

# ELEVATIONS

PLANT A



## CROSS SECTIONS

11-11-11

Douglas Hamilton Attorney  
 1245 Fulton St.  
 Baltimore, Md. 21202  
 in connection with  
 James Earl Ray, et al.  
 1245 Fulton St.  
 Baltimore, Md. 21202

**Whitcomb Systems**  
 Building & Building Automation  
 7720 Preston Blvd., Suite 200  
 Minneapolis, MN 55425

Mechanical Engineer  
 - Capital Engineering Consultant  
 1989-Present, B-4, San Jose  
 Sacramento, California 95834

**Electrical Engineer**  
**Engineering Education**  
**F200 Public Grad: Pass 100%**

Club Engineer  
 Hotel & Restaurant  
 1716 - 18th

Phone Counting /  
Lighting Countdown  
\$ 144-2-6 Available 24 hours

**Accounting Department**  
**Faculty / Staff / Students**

Bookings Available  
 December 1st - 31st

1

100

1

1




[illegible]


No.	Distance
-----	----------

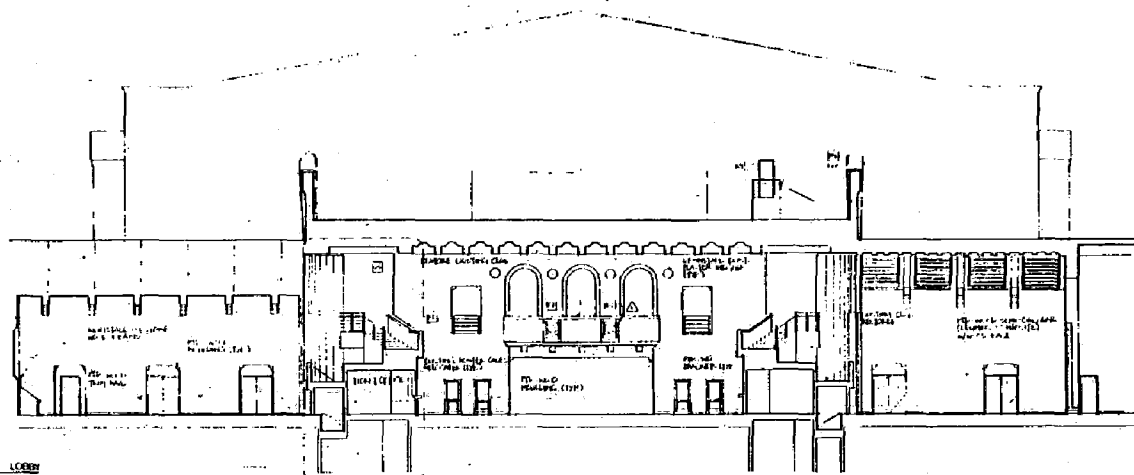
111

The diagram illustrates a two-dimensional lattice structure. It consists of a grid of points connected by horizontal and vertical bonds. A specific path is highlighted with thicker lines, starting from a point on the left and moving towards the right. The diagram is labeled with 'x' and 'y' axes and includes a legend for bond types.

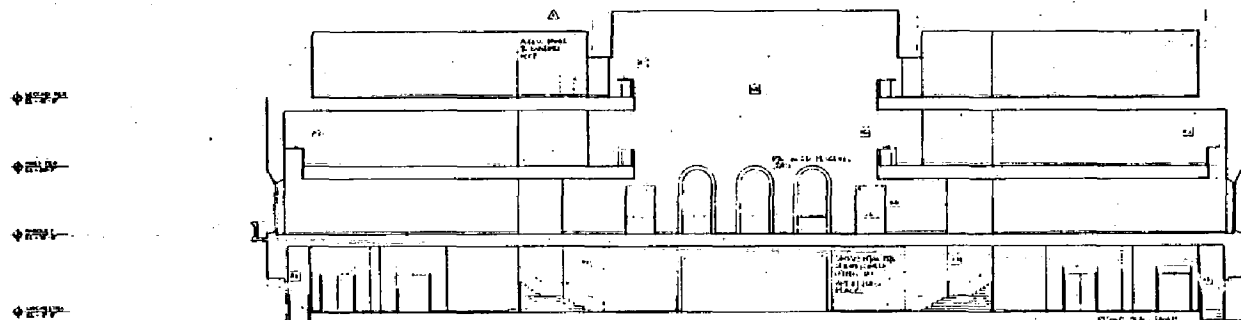
**CHARGE ELECTRON**



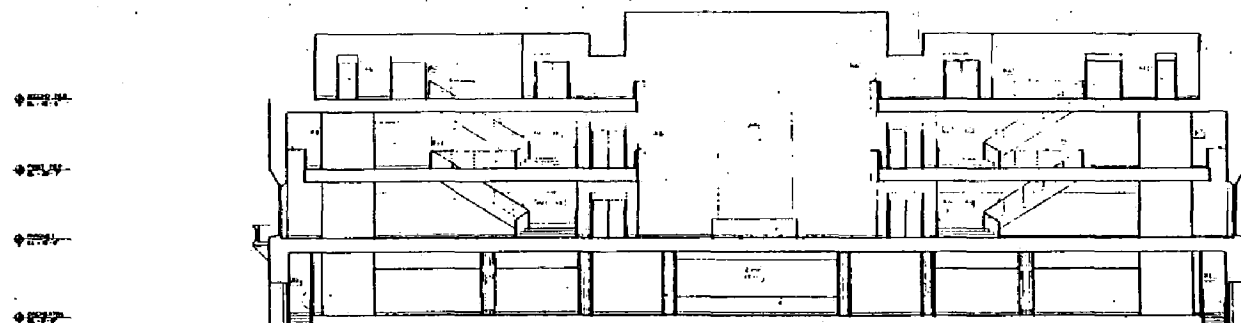
— — — — —



SECTION THRU MAIN ENTRANCE LOBBY  
SCALE 1/8"=1'-0"



SECTION THRU MAIN LOBBY LOOKING SOUTH  
SCALE 1/8"=1'-0"



SECTION THRU MAIN LOBBY LOOKING NORTH  
SCALE 1/8"=1'-0"

## CROSS SECTIONS

**CSMA**

City of San Antonio  
San Antonio, Texas  
78201

Project:  
San Antonio Convention Center  
1000 Broadway, San Antonio, Texas  
78201

Architect:  
San Antonio Convention Center  
1000 Broadway, San Antonio, Texas  
78201

Engineer:  
San Antonio Convention Center  
1000 Broadway, San Antonio, Texas  
78201

Contractor:  
San Antonio Convention Center  
1000 Broadway, San Antonio, Texas  
78201

Owner:  
City of San Antonio  
1000 Broadway, San Antonio, Texas  
78201

Design:  
San Antonio Convention Center  
1000 Broadway, San Antonio, Texas  
78201

Construction:  
San Antonio Convention Center  
1000 Broadway, San Antonio, Texas  
78201

Interior:  
San Antonio Convention Center  
1000 Broadway, San Antonio, Texas  
78201

Exterior:  
San Antonio Convention Center  
1000 Broadway, San Antonio, Texas  
78201

Foundation:  
San Antonio Convention Center  
1000 Broadway, San Antonio, Texas  
78201

Roof:  
San Antonio Convention Center  
1000 Broadway, San Antonio, Texas  
78201

MECHANICAL:  
San Antonio Convention Center  
1000 Broadway, San Antonio, Texas  
78201

ELECTRICAL:  
San Antonio Convention Center  
1000 Broadway, San Antonio, Texas  
78201

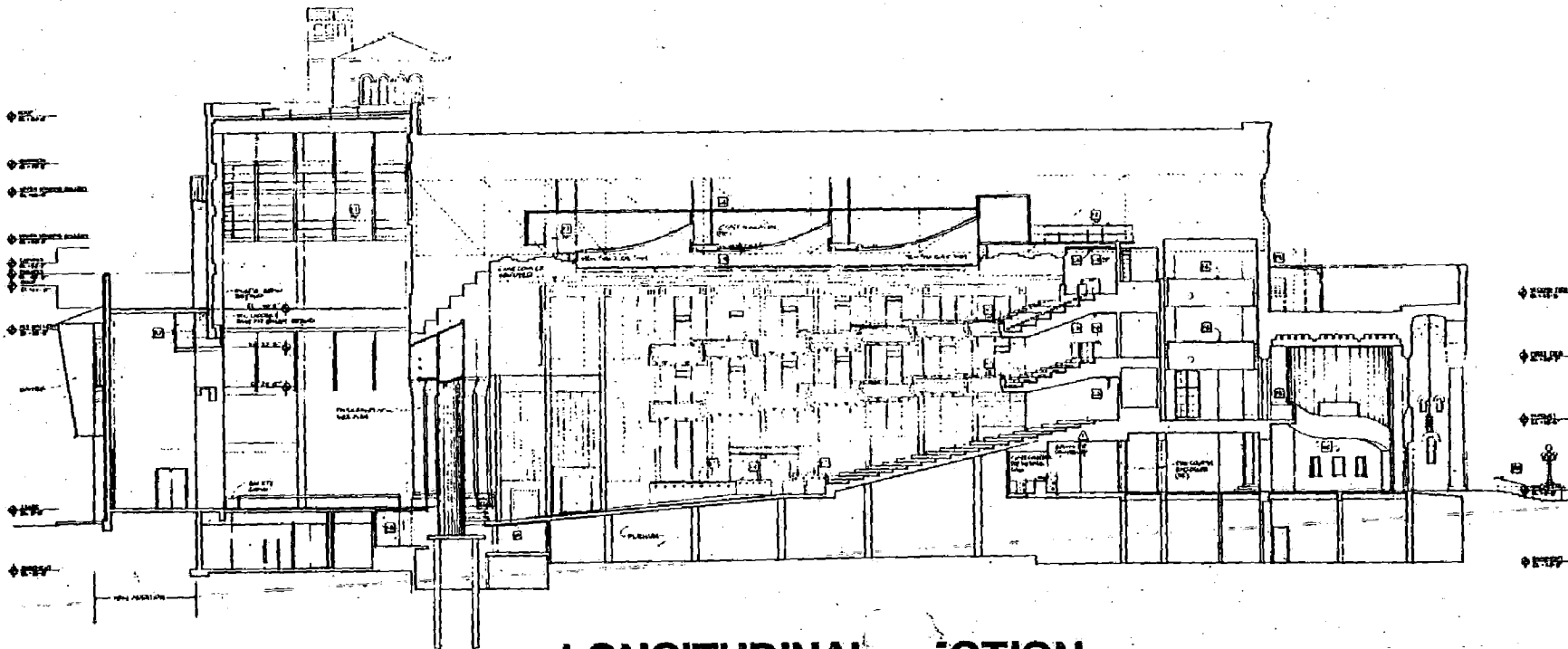
PLUMBING:  
San Antonio Convention Center  
1000 Broadway, San Antonio, Texas  
78201

PAINT:  
San Antonio Convention Center  
1000 Broadway, San Antonio, Texas  
78201

FINISHES:  
San Antonio Convention Center  
1000 Broadway, San Antonio, Texas  
78201

LANDSCAPE:  
San Antonio Convention Center  
1000 Broadway, San Antonio, Texas  
78201

SECTION



LONGITUDINAL SECTION

**SMA**

STRUCTURAL MECHANICAL ARCHITECTURAL

City of Baltimore  
200 West 10th Street  
Baltimore, Maryland 21201

**Architect**  
Baltimore Building Institute  
200 West 10th Street  
Baltimore, Maryland 21201  
In consultation with  
John, Wright, Smith, and Partners  
200 West 10th Street  
New York, New York 10011

**Structural Engineer**  
Buckle & Buckle Company  
200 West 10th Street  
Baltimore, Maryland 21201

**Mechanical Engineer**  
Cord Building Corporation  
200 West 10th Street  
Baltimore, Maryland 21201

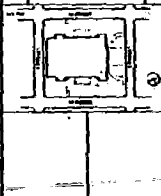
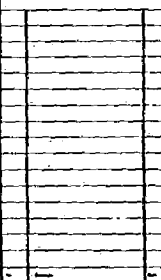
**Electrical Engineer**  
Baltimore Building Institute  
200 West 10th Street  
Baltimore, Maryland 21201

**Civil Engineer**  
Buckle & Buckle Company  
200 West 10th Street  
Baltimore, Maryland 21201

**Structural Engineer /  
Lighting Consultant**  
Baltimore Building Institute  
200 West 10th Street  
Baltimore, Maryland 21201

**Acoustical Consultant**  
Baltimore Building Institute  
200 West 10th Street  
Baltimore, Maryland 21201

**Architectural Consultant**  
Baltimore Building Institute  
200 West 10th Street  
Baltimore, Maryland 21201



LONGITUDINAL SECTION



A 203



**Archives**  
Stephen Bradford Archives  
Web Pages Web  
Reviews, Criticism 2016  
to appreciate 400  
Book Review Project and Series  
100 Years 100 Books  
New York, New York 10000

**Executive Engineer**  
**Builder & Builder Assistant**  
**Full Time Staff, Sal. 165**  
**Intervenor, Oshkosh, WI**

**Electrical Engineer**  
 Dept. Electrical Engineering, Box  
 1111, Fort St. John, B.C. V1A 2S5  
 Tel: 251-2211, Fax: 251-2212

Director, Engineer  
 Supervising Engineer  
 Film Project Manager, 1932-1933  
 Technical Director, 1933-1934

doi:10.1017/S0022292412001919

Chris. Hughes  
Holt & Associates  
11201 Hwy  
Beverly Hills, California 90212

**Theater Committee /**  
**Lighting Committee**  
1 Lowell Avenue • Amherst, MA  
9202 Spruce Street  
San Francisco, California 94112

◆ 附註

**Advertising Consultant**  
 Pyling & Lewis & Associates Inc.  
 40 Gold Street  
 San Francisco, California 94111

Φ 57mm

1. **Language section**  
 Directed & Assisted  
 6th Period: 100  
 8th Period: 100

 Blackwell Science[illegible]

The floor plan shows a central rectangular area, likely a courtyard or a large hall, surrounded by rooms. The layout is symmetrical, with a central corridor or open space. The drawing is a black and white line drawing, showing the walls, doors, and some furniture like beds in the rooms.

• **STAY**

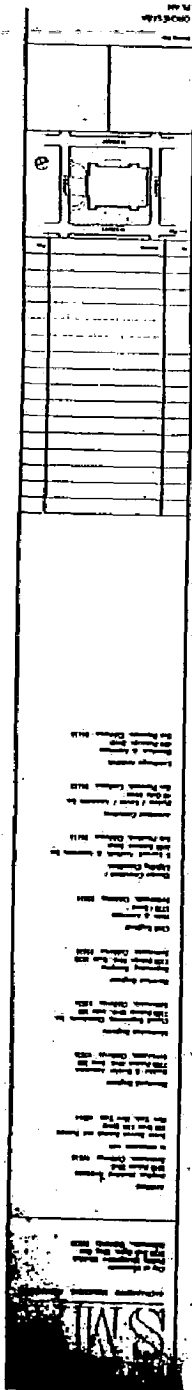
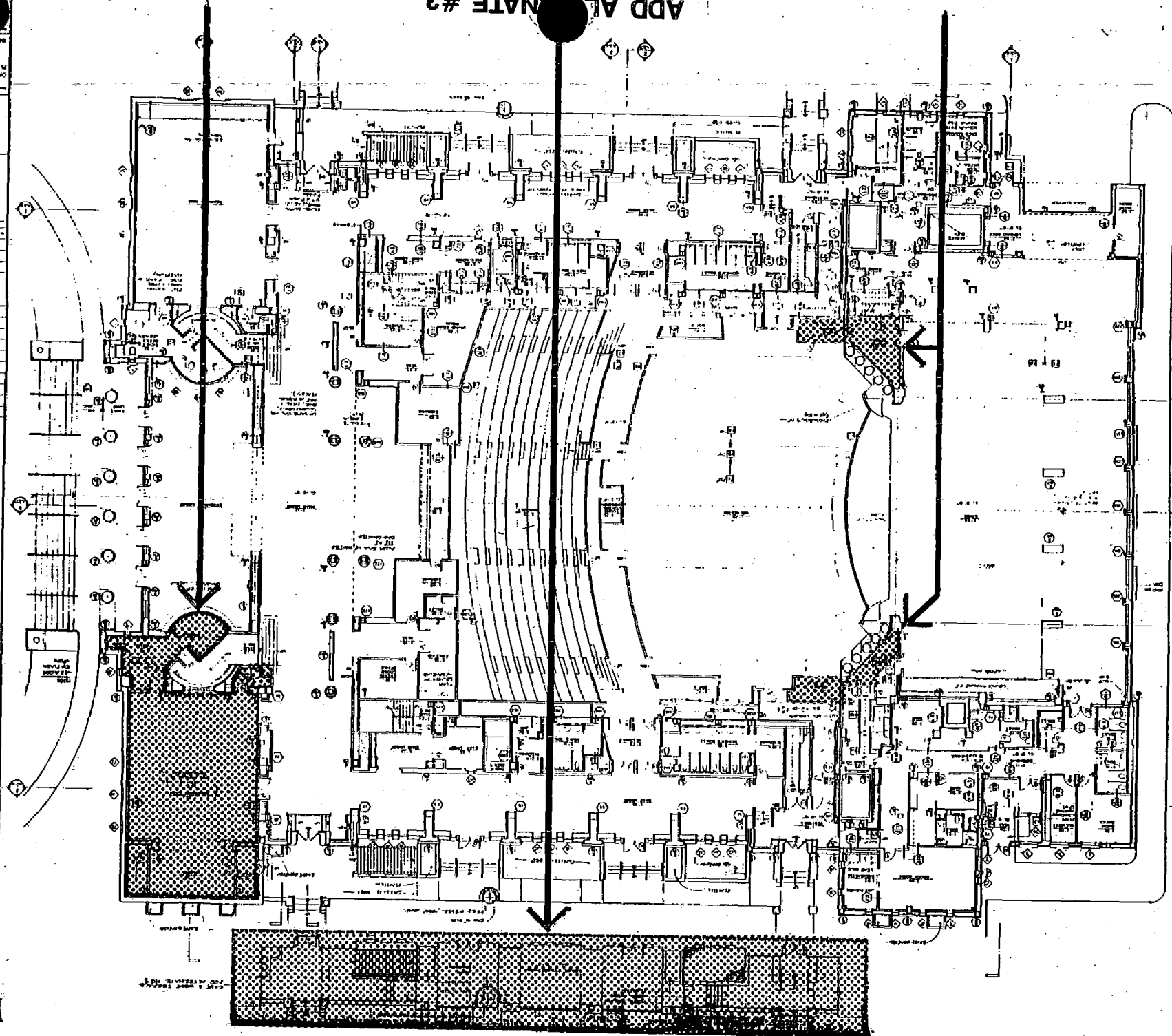
<p> <b>Figure 2</b>  <b>Figure 3</b>  <b>Figure 4</b>  <b>Figure 5</b>  <b>Figure 6</b>  <b>Figure 7</b>  <b>Figure 8</b>  <b>Figure 9</b>  <b>Figure 10</b>  <b>Figure 11</b>  <b>Figure 12</b>  <b>Figure 13</b>  <b>Figure 14</b>  <b>Figure 15</b>  <b>Figure 16</b>  <b>Figure 17</b>  <b>Figure 18</b>  <b>Figure 19</b>  <b>Figure 20</b>  <b>Figure 21</b>  <b>Figure 22</b>  <b>Figure 23</b>  <b>Figure 24</b>  <b>Figure 25</b>  <b>Figure 26</b>  <b>Figure 27</b>  <b>Figure 28</b>  <b>Figure 29</b>  <b>Figure 30</b>  <b>Figure 31</b>  <b>Figure 32</b>  <b>Figure 33</b>  <b>Figure 34</b>  <b>Figure 35</b>  <b>Figure 36</b>  <b>Figure 37</b>  <b>Figure 38</b>  <b>Figure 39</b>  <b>Figure 40</b>  <b>Figure 41</b>  <b>Figure 42</b>  <b>Figure 43</b>  <b>Figure 44</b>  <b>Figure 45</b>  <b>Figure 46</b>  <b>Figure 47</b>  <b>Figure 48</b>  <b>Figure 49</b>  <b>Figure 50</b>  <b>Figure 51</b>  <b>Figure 52</b>  <b>Figure 53</b>  <b>Figure 54</b>  <b>Figure 55</b>  <b>Figure 56</b>  <b>Figure 57</b>  <b>Figure 58</b>  <b>Figure 59</b>  <b>Figure 60</b>  <b>Figure 61</b>  <b>Figure 62</b>  <b>Figure 63</b>  <b>Figure 64</b>  <b>Figure 65</b>  <b>Figure 66</b>  <b>Figure 67</b>  <b>Figure 68</b>  <b>Figure 69</b>  <b>Figure 70</b>  <b>Figure 71</b>  <b>Figure 72</b>  <b>Figure 73</b>  <b>Figure 74</b>  <b>Figure 75</b>  <b>Figure 76</b>  <b>Figure 77</b>  <b>Figure 78</b>  <b>Figure 79</b>  <b>Figure 80</b>  <b>Figure 81</b>  <b>Figure 82</b>  <b>Figure 83</b>  <b>Figure 84</b>  <b>Figure 85</b>  <b>Figure 86</b>  <b>Figure 87</b>  <b>Figure 88</b>  <b>Figure 89</b>  <b>Figure 90</b>  <b>Figure 91</b>  <b>Figure 92</b>  <b>Figure 93</b>  <b>Figure 94</b>  <b>Figure 95</b>  <b>Figure 96</b>  <b>Figure 97</b>  <b>Figure 98</b>  <b>Figure 99</b>  <b>Figure 100</b>  <b>Figure 101</b>  <b>Figure 102</b>  <b>Figure 103</b>  <b>Figure 104</b>  <b>Figure 105</b>  <b>Figure 106</b>  <b>Figure 107</b>  <b>Figure 108</b>  <b>Figure 109</b>  <b>Figure 110</b>  <b>Figure 111</b>  <b>Figure 112</b>  <b>Figure 113</b>  <b>Figure 114</b>  <b>Figure 115</b>  <b>Figure 116</b>  <b>Figure 117</b>  <b>Figure 118</b>  <b>Figure 119</b>  <b>Figure 120</b>  <b>Figure 121</b>  <b>Figure 122</b>  <b>Figure 123</b>  <b>Figure 124</b>  <b>Figure 125</b>  <b>Figure 126</b>  <b>Figure 127</b>  <b>Figure 128</b>  <b>Figure 129</b>  <b>Figure 130</b>  <b>Figure 131</b>  <b>Figure 132</b>  <b>Figure 133</b>  <b>Figure 134</b>  <b>Figure 135</b>  <b>Figure 136</b>  <b>Figure 137</b>  <b>Figure 138</b>  <b>Figure 139</b>  <b>Figure 140</b>  <b>Figure 141</b>  <b>Figure 142</b>  <b>Figure 143</b>  <b>Figure 144</b>  <b>Figure 145</b>  <b>Figure 146</b>  <b>Figure 147</b>  <b>Figure 148</b>  <b>Figure 149</b>  <b>Figure 150</b>  <b>Figure 151</b>  <b>Figure 152</b>  <b>Figure 153</b>  <b>Figure 154</b>  <b>Figure 155</b>  <b>Figure 156</b>  <b>Figure 157</b>  <b>Figure 158</b>  <b>Figure 159</b>  <b>Figure 160</b>  <b>Figure 161</b>  <b>Figure 162</b>  <b>Figure 163</b>  <b>Figure 164</b>  <b>Figure 165</b>  <b>Figure 166</b>  <b>Figure 167</b>  <b>Figure 168</b>  <b>Figure 169</b>  <b>Figure 170</b>  <b>Figure 171</b>  <b>Figure 172</b>  <b>Figure 173</b>  <b>Figure 174</b>  <b>Figure 175</b>  <b>Figure 176</b>  <b>Figure 177</b>  <b>Figure 178</b>  <b>Figure 179</b>  <b>Figure 180</b>  <b>Figure 181</b>  <b>Figure 182</b>  <b>Figure 183</b>  <b>Figure 184</b>  <b>Figure 185</b>  <b>Figure 186</b>  <b>Figure 187</b>  <b>Figure 188</b>  <b>Figure 189</b>  <b>Figure 190</b>  <b>Figure 191</b>  <b>Figure 192</b>  <b>Figure 193</b>  <b>Figure 194</b>  <b>Figure 195</b>  <b>Figure 196</b>  <b>Figure 197</b>  <b>Figure 198</b>  <b>Figure 199</b>  <b>Figure 200</b>  <b>Figure 201</b>  <b>Figure 202</b>  <b>Figure 203</b>  <b>Figure 204</b>  <b>Figure 205</b>  <b>Figure 206</b>  <b>Figure 207</b>  <b>Figure 208</b>  <b>Figure 209</b>  <b>Figure 210</b>  <b>Figure 211</b>  <b>Figure 212</b>  <b>Figure 213</b>  <b>Figure 214</b>  <b>Figure 215</b>  <b>Figure 216</b>  <b>Figure 217</b>  <b>Figure 218</b>  <b>Figure 219</b>  <b>Figure 220</b>  <b>Figure 221</b>  <b>Figure 222</b>  <b>Figure 223</b>  <b>Figure 224</b>  <b>Figure 225</b>  <b>Figure 226</b>  <b>Figure 227</b>  <b>Figure 228</b>  <b>Figure 229</b>  <b>Figure 230</b>  <b>Figure 231</b>  <b>Figure 232</b>  <b>Figure 233</b>  <b>Figure 234</b>  <b>Figure 235</b>  <b>Figure 236</b>  <b>Figure 237</b>  <b>Figure 238</b>  <b>Figure 239</b>  <b>Figure 240</b>  <b>Figure 241</b>  <b>Figure 242</b>  <b>Figure 243</b>  <b>Figure 244</b>  <b>Figure 245</b>  <b>Figure 246</b>  <b>Figure 247</b>  <b>Figure 248</b>  <b>Figure 249</b>  <b>Figure 250</b>  <b>Figure 251</b>  <b>Figure 252</b>  <b>Figure 253</b>  <b>Figure 254</b>  <b>Figure 255</b>  <b>Figure 256</b>  <b>Figure 257</b>  <b>Figure 258</b>  <b>Figure 259</b>  <b>Figure 260</b>  <b>Figure 261</b>  <b>Figure 262</b>  <b>Figure 263</b>  <b>Figure 264</b>  <b>Figure 265</b>  <b>Figure 266</b>  <b>Figure 267</b>  <b>Figure 268</b>  <b>Figure 269</b>  <b>Figure 270</b>  <b>Figure 271</b>  <b>Figure 272</b>  <b>Figure 273</b>  <b>Figure 274</b>  <b>Figure 275</b>  <b>Figure 276</b>  <b>Figure 277</b>  <b>Figure 278</b>  <b>Figure 279</b>  <b>Figure 280</b>  <b>Figure 281</b>  <b>Figure 282</b>  <b>Figure 283</b>  <b>Figure 284</b>  <b>Figure 285</b>  <b>Figure 286</b>  <b>Figure 287</b>  <b>Figure 288</b>  <b>Figure 289</b>  <b>Figure 290</b>  <b>Figure 291</b>  <b>Figure 292</b>  <b>Figure 293</b>  <b>Figure 294</b>  <b>Figure 295</b>  <b>Figure 296</b>  <b>Figure 297</b>  <b>Figure 298</b>  <b>Figure 299</b>  <b>Figure 300</b>  <b>Figure 301</b>  <b>Figure 302</b>  <b>Figure 303</b>  <b>Figure 304</b>  <b>Figure 305</b>  <b>Figure 306</b>  <b>Figure 307</b>  <b>Figure 308</b>  <b>Figure 309</b>  <b>Figure 310</b>  <b>Figure 311</b>  <b>Figure 312</b>  <b>Figure 313</b>  <b>Figure 314</b>  <b>Figure 315</b>  <b>Figure 316</b>  <b>Figure 317</b>  <b>Figure 318</b>  <b>Figure 319</b>  <b>Figure 320</b>  <b>Figure 321</b>  <b>Figure 322</b>  <b>Figure 323</b>  </p>
--

## LONGITUDINAL SECTIONS

ADD ALTERNATE #1

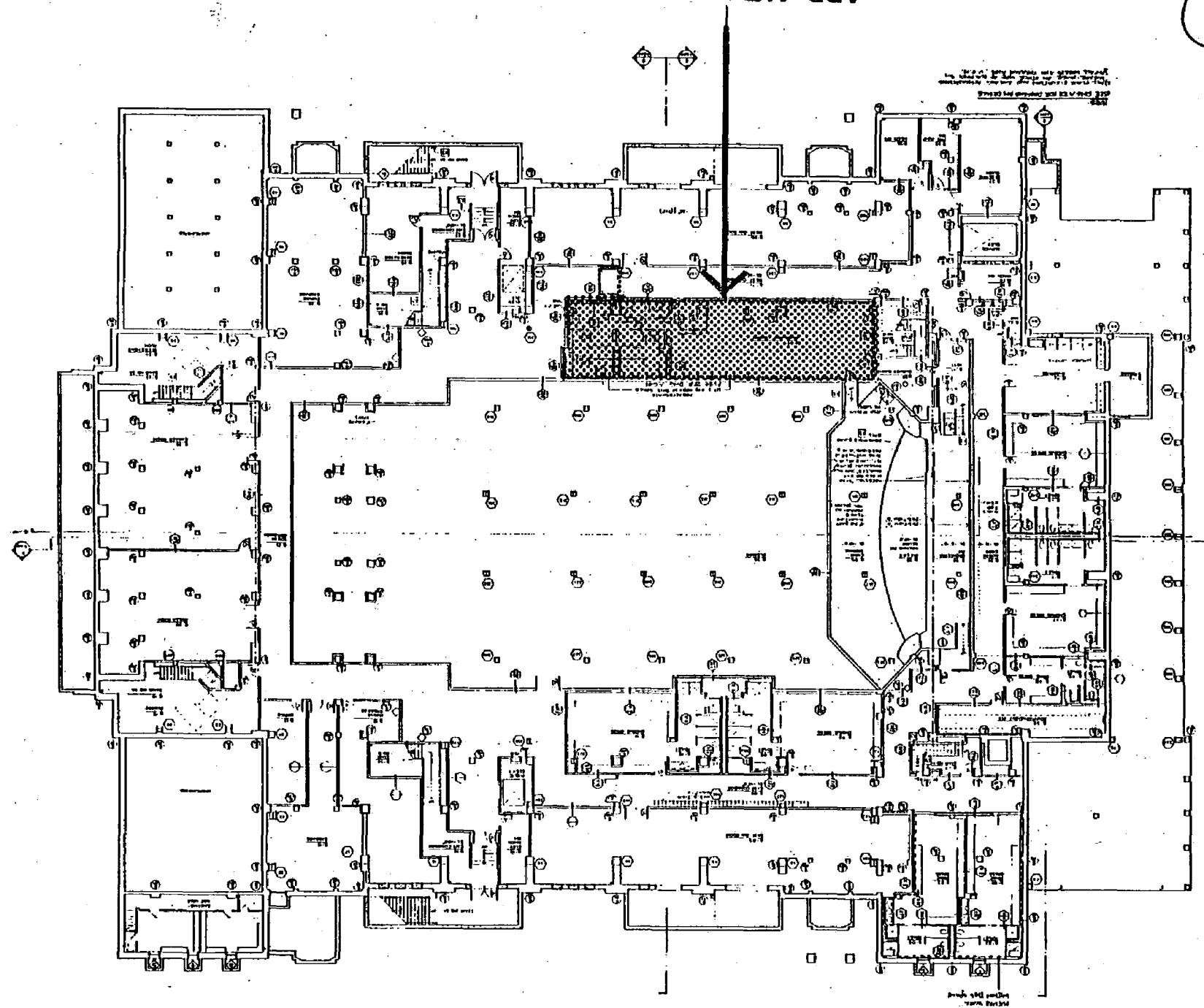
ADD ALTERNATE #3

ADD ALTERNATE #2



24

ADD ALTERNATE #4



Architectural drawing with a vertical title block on the left side. The title block contains the text "S.A.A." in a large, stylized font, followed by "Architectural Drawing" and "Floor Plan". Below this, there is a section titled "Notes" containing several lines of text. At the bottom of the title block, there is a small table with two columns and several rows of data.

1000 N. 1st St.  
P.O. Box 1000  
Mobile, Ala. 36601

**Project:**  
Mobile County Courthouse  
1000 N. 1st St.  
Mobile, Ala. 36601  
1982

**Architect:**  
SMA  
1000 N. 1st St.  
Mobile, Ala. 36601

**Engineer:**  
SMA  
1000 N. 1st St.  
Mobile, Ala. 36601

**Structural Engineer:**  
SMA  
1000 N. 1st St.  
Mobile, Ala. 36601

**Electrical Engineer:**  
SMA  
1000 N. 1st St.  
Mobile, Ala. 36601

**Mechanical Engineer:**  
SMA  
1000 N. 1st St.  
Mobile, Ala. 36601

**Sanitary Engineer:**  
SMA  
1000 N. 1st St.  
Mobile, Ala. 36601

**Interior Designer:**  
SMA  
1000 N. 1st St.  
Mobile, Ala. 36601

**Exterior Designer:**  
SMA  
1000 N. 1st St.  
Mobile, Ala. 36601

**Landscaping Designer:**  
SMA  
1000 N. 1st St.  
Mobile, Ala. 36601

**Site Plan:**  
SMA  
1000 N. 1st St.  
Mobile, Ala. 36601

**Section:**  
SMA  
1000 N. 1st St.  
Mobile, Ala. 36601

**Detail:**  
SMA  
1000 N. 1st St.  
Mobile, Ala. 36601

**Foundation:**  
SMA  
1000 N. 1st St.  
Mobile, Ala. 36601

**Roofing:**  
SMA  
1000 N. 1st St.  
Mobile, Ala. 36601

**Windows:**  
SMA  
1000 N. 1st St.  
Mobile, Ala. 36601

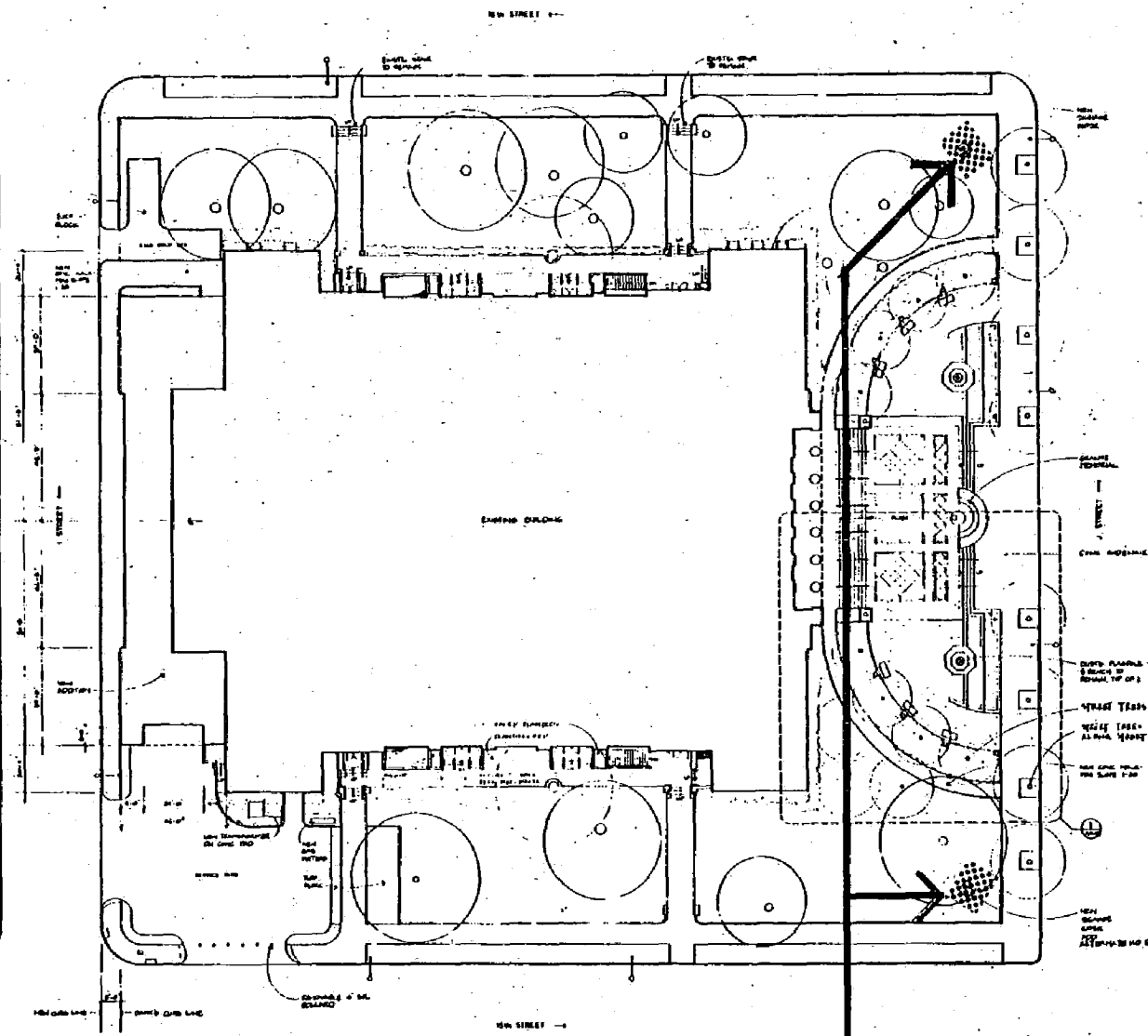
**Doors:**  
SMA  
1000 N. 1st St.  
Mobile, Ala. 36601

**Stairs:**  
SMA  
1000 N. 1st St.  
Mobile, Ala. 36601

**Elevations:**  
SMA  
1000 N. 1st St.  
Mobile, Ala. 36601

**Site Plan:**  
SMA  
1000 N. 1st St.  
Mobile, Ala. 36601

**Section:**  
SMA  
1000 N. 1st St.  
Mobile, Ala. 36601



**ADD ALTERNATE #5**

**EXHIBIT A**

# SACRAMENTO MEMORIAL AUDITORIUM

## Projected Schedule

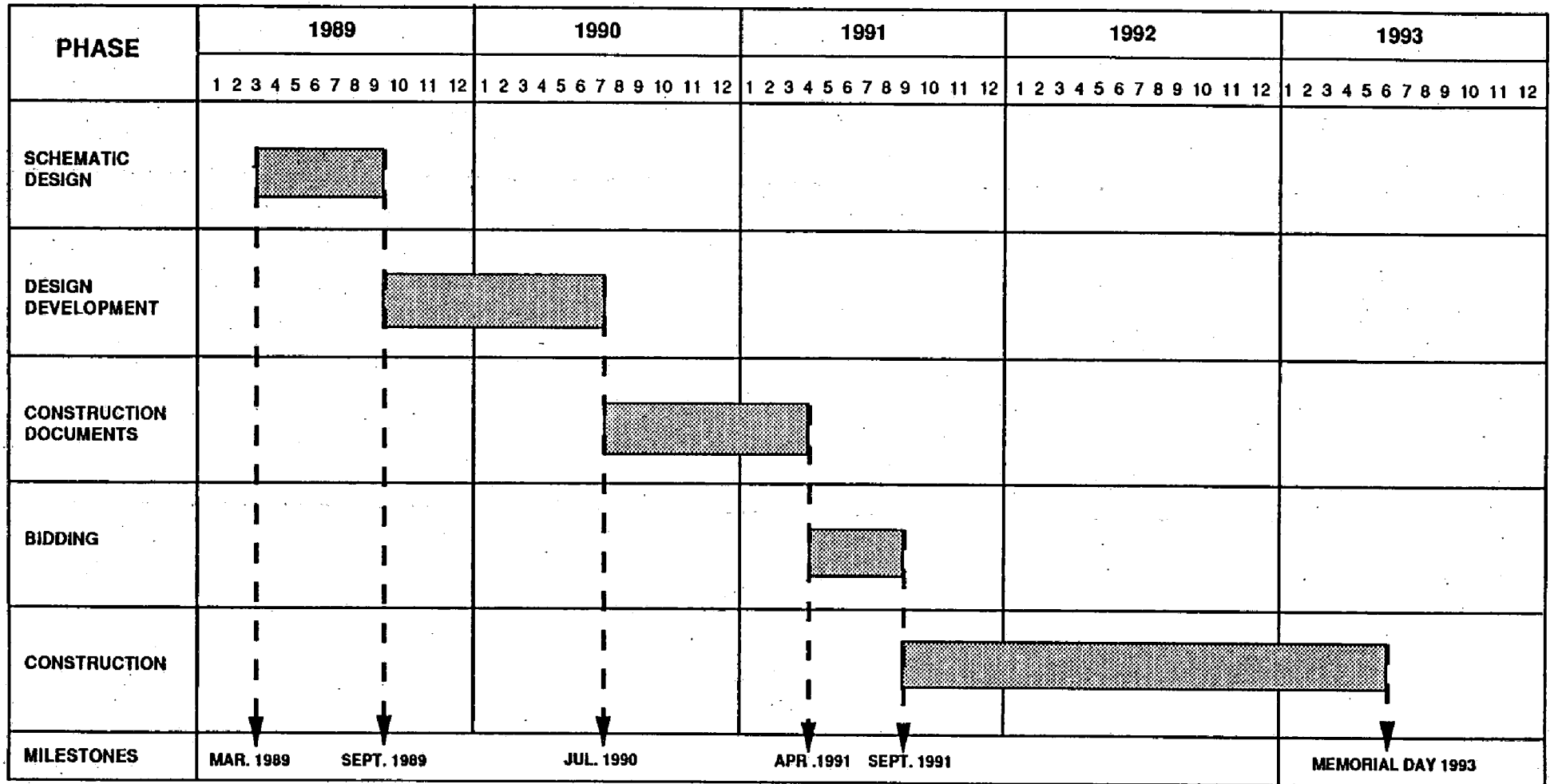


EXHIBIT B