

**DEPARTMENT OF  
PUBLIC WORKS**

DEVELOPMENT SERVICES  
DIVISION

TERENCE W. MOORE  
DIVISION MANAGER

**CITY OF SACRAMENTO**  
CALIFORNIA

**APPROVED**  
BY THE CITY COUNCIL

DEC 12 1989

OFFICE OF THE  
CITY CLERK

927 TENTH STREET  
ROOM 100  
SACRAMENTO, CA  
95814-2795

916-449-8210

December 12, 1989

City Council  
Sacramento, California

Honorable Members In Session:

SUBJECT: Pinedale Estates Unit No. 2 (P-88275) - Approval of Final Subdivision Map

**SUMMARY**

Adoption of a resolution approving a Final Subdivision Map for Pinedale Estates Unit No. 2 project, located at the northwest corner of Pinedale Avenue and Sully Street, is recommended.

**BACKGROUND**

On November 9, 1988, the City Council approved a Tentative Subdivision Map by adopting Resolution No. 88-964.

All conditions in the staff subdivision report have been met and the Final Subdivision Map is presented for approval.

**FINANCIAL DATA**

All subdivision costs are being paid by the subdivider, B.G.C. Dev., Inc., a California Corporation and Nishimoto Development, Inc., a California Corporation.

**POLICY CONSIDERATION**

None.

**MBE/WBE EFFORTS**

None.

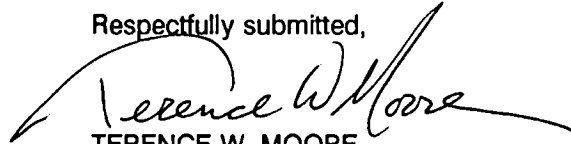
020112039  
20150 200010 000  
011111 111 111  
00111 11 1 000

City Council  
Final Subdivision Map (P-88275)  
December 12, 1989  
Page 2

**RECOMMENDATION**

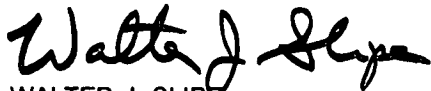
It is recommended that the attached resolution approving the Final Subdivision Map be adopted.

Respectfully submitted,



TERENCE W. MOORE  
Supervising Engineer

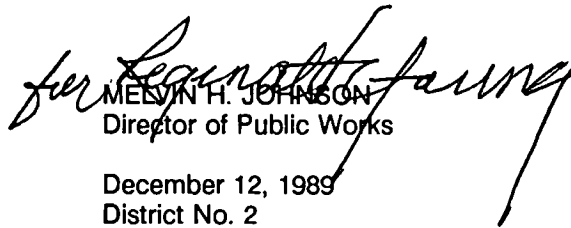
Recommendation Approved:



WALTER J. SLIPE  
City Manager

JL:rn  
DS1-11.A  
11.2889.1

Approved:



MELVIN H. JOHNSON  
Director of Public Works

December 12, 1989  
District No. 2

Attachment

**CONTACT PERSON**

Glenn Marshall, Associate Civil Engineer, (916) 449-5517

**RESOLUTION NO. 89-935**

**APPROVED**  
BY THE CITY COUNCIL

ADOPTED BY THE SACRAMENTO CITY COUNCIL

DEC 12 1989

ON DATE OF \_\_\_\_\_

OFFICE OF THE  
CITY CLERK

APPROVING FINAL SUBDIVISION MAP FOR  
PINEDALE ESTATES UNIT NO. 2 (P-88275)

WHEREAS, THE COUNCIL OF THE CITY OF SACRAMENTO FINDS AND DETERMINES AS FOLLOWS:

- A. The Final Subdivision Map for Pinedale Estates Unit No. 2 project, located at the northwest corner of Pinedale Avenue and Sully Street, with provisions for its design and improvement, is consistent with the City General and North Sacramento Community Plan.
- B. The Final Subdivision Map is in substantial compliance with the previously approved tentative map.

NOW, THEREFORE, BE IT RESOLVED BY THE COUNCIL OF THE CITY OF SACRAMENTO AS FOLLOWS:

- 1. The Final Subdivision Map for this project is hereby approved.
- 2. All offers of dedication shown on said map are hereby accepted.

ATTEST:

\_\_\_\_\_  
MAYOR

\_\_\_\_\_  
CITY CLERK

DS1-11.A  
11.2889.1

---

**FOR CITY CLERK USE ONLY**

RESOLUTION NO.: \_\_\_\_\_

DATE ADOPTED: \_\_\_\_\_

58-278-3

9-22-88

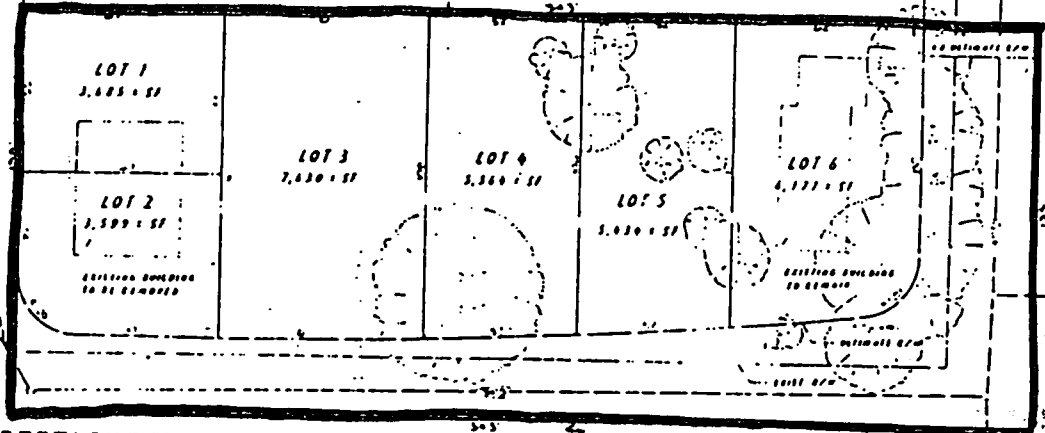


SCALE: 1" = 20'

APPROVED  
BY THE CITY COUNCIL  
DEC 12 1989  
OFFICE OF THE  
CITY CLERK

PINEDALE ESTATES  
(APPROVED TENT. SUBDIVISION)  
(P-87-157)  
P85-254

HOYT  
226-070-10



STAKE  
226-110-09

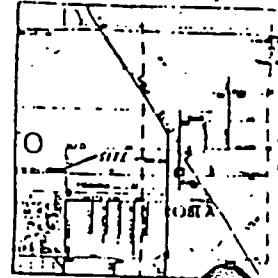
PINEDALE AVENUE

BRADEN  
226-070-36

YOUNG  
226-070-37

YOUNG  
226-070-59

COLLINSON  
226-151-01



VICINITY MAP  
NO. 15422

NOTES:  
1. THIS TENTATIVE SUBDIVISION MAP IS FOR INFORMATION ONLY AND DOES NOT CONSTITUTE AN OFFER OF REAL ESTATE.  
2. THE CITY ENGINEER HAS REVIEWED THIS MAP FOR TECHNICAL ACCURACY AND COMPLIANCE WITH THE SUBDIVISION MAP ACT.  
3. THE CITY ENGINEER'S REVIEW IS LIMITED TO TECHNICAL MATTERS AND DOES NOT CONSTITUTE A GUARANTEE OF THE ACCURACY OF THE INFORMATION CONTAINED HEREON.  
4. THE CITY ENGINEER'S REVIEW DOES NOT CONSTITUTE A GUARANTEE OF THE ACCURACY OF THE INFORMATION CONTAINED HEREON.  
5. THE CITY ENGINEER'S REVIEW DOES NOT CONSTITUTE A GUARANTEE OF THE ACCURACY OF THE INFORMATION CONTAINED HEREON.

TENTATIVE MAP

SEE NOTE 1 & 2 OF APPROVED TENT. SUBD. PINEDALE ESTATES PER 157

NO.	DESCRIPTION	APPROVED DATE	DATE	SCALE	BENCH MARK	COMPUTED	DESIGNED	DRAWN	PROJ. ENG.

**m p** MORTON & PITALO, INC.  
CIVIL ENGINEERING • PLANNING • SURVEYING

TENTATIVE SUBDIVISION MAP  
**NISHIMOTO DEVELOPMENT**  
CITY OF SACRAMENTO

DATE  
MPS  
PROJECT  
SHEET