



CITY OF SACRAMENTO

October 30, 1984

DEPARTMENT OF PUBLIC WORKS

Engineering and Transportation Division
915 I Street - Room 300
Sacramento, California 95814

CITY MANAGER'S OFFICE
RECEIVED
OCT 25 1984

	Telephones (916)
Civil Engineering	449-5281
Electrical Engineering	449-5287
Architecture	449-5144
Construction	449-5281
Real Estate	449-5626
Traffic Engineering	449-5307
Parking	449-5354
Street Maintenance	449-5236

City Council
Sacramento, California

Honorable Members In Session:

SUBJECT: Approval of Final Subdivision Map and Agreement
for Delta Point East Unit No. 2

BACKGROUND INFORMATION

On November 10, 1981, the City Council approved a tentative map for Delta Point East Unit No. 2 located in the vicinity of West El Camino Avenue and Truxel Road, by adopting Resolution No. 81-834.

All conditions and stipulations set forth in the staff subdivision report have been complied with and the final subdivision map is now being presented for final approval.

AC 84088

APPROVED
BY THE CITY COUNCIL

FINANCIAL DATA

All costs pertaining to the subdivision are being paid by the subdivider.

OCT 30 1984

OFFICE OF THE
CITY CLERK

RECOMMENDATION

It is recommended that the attached Resolution approving the final subdivision map and agreement be adopted.

Respectfully submitted,

L. M. Frink
Deputy Director of Public Works

Recommendation Approved

Approved:

Walter J. Slipe
City Manager

Melvin H. Johnson
Director of Public Works

RESOLUTION NO. 84-919

Adopted by The Sacramento City Council on date of

OCTOBER 30, 1984

APPROVED
BY THE CITY COUNCIL

OCT 30 1984

APPROVING FINAL MAP FOR DELTA POINT EAST UNIT NO. 2
(P-9532)

OFFICE OF THE
CITY CLERK

WHEREAS, THE COUNCIL OF THE CITY OF SACRAMENTO FINDS AND DETERMINES AS FOLLOWS:

A. The final subdivision map of Delta Point East Unit No. 2, together with provisions for its design and improvement, is consistent with the General Plan of the City of Sacramento and the South Natomas Community Plan.

B. The final map is in substantial compliance with the previously approved tentative map.

NOW, THEREFORE, BE IT RESOLVED BY THE COUNCIL OF THE CITY OF SACRAMENTO AS FOLLOWS:

1. The final map of Delta Point East Unit No. 2, be, and the same is hereby approved subject to the execution by all parties of the subdivision improvement agreement for that subdivision.

2. All offers of dedication shown on said map are hereby accepted, subject to the improvement thereof required by the subdivision agreement.

3. The City Manager and City Clerk be authorized and directed to execute on behalf of the City of Sacramento that certain Subdivision Improvement Agreement (and abstract thereof) between the City and Pacific Scene, Inc., a California corporation , to provide for the subdivision improvements required by the Subdivision Map Act and Chapter 40 (Subdivision Regulations) of the Sacramento City Code.

4. The Real Estate Supervisor is authorized and directed to record the abstract of the above-mentioned agreement in the official records of Sacramento County.

MAYOR

ATTEST:

CITY CLERK

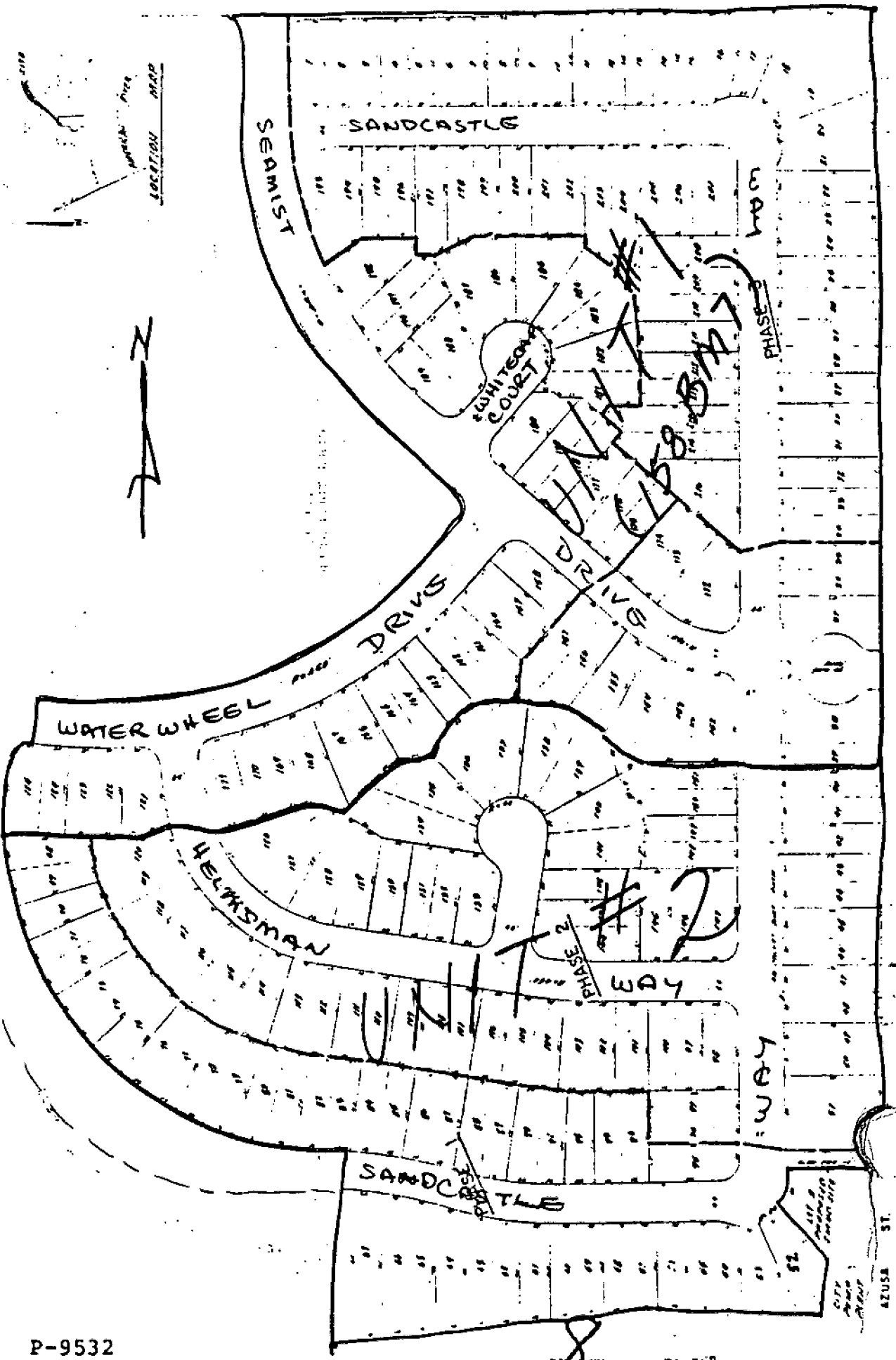
The first part of the report is devoted to a general
description of the situation in the country. It
then goes on to discuss the various aspects of the
problem, and finally offers some suggestions for
improvement. The report is well written and
clearly presented. It is a valuable contribution
to the study of the subject. The author has
done a very good job of summarizing the
main points of the various reports. The
conclusions are well supported by the
evidence. The report is a very good
example of what can be done in this
field.

TENTATIVE MAP

WEST EL CAMINO AVE

1000

15



REINER WAY

HAWK AVE

WAY

AZUSA ST.

Delia Robert Park

PREPARED BY: [illegible]
 CHECKED BY: [illegible]
 DATE: [illegible]

November 13, 1984

Mr. Robert M. Balzhiser, Senior Vice President
Pacific Scene, Inc.
600 W North Market Boulevard, Suite 5
Sacramento, CA 95834

Dear Mr. Balzhiser:

On October 30, 1984, the Sacramento City Council adopted a Resolution No. 84-919 authorizing the execution of Agreement No. 84088 approving the final map for Delta Point East Unit 2.

Enclosed, for your records, is one fully certified copy of said agreement and authorizing resolution.

Sincerely,

Lorraine Magana
City Clerk



Janice Beaman
Deputy City Clerk

LM/JB/dah/15
Enclosure

cc: Risk Management