



3.6

DEPARTMENT OF
PUBLIC WORKS

DEVELOPMENT SERVICES

CITY OF SACRAMENTO
CALIFORNIA

927 TENTH STREET
ROOM 100
SACRAMENTO, CA
95814-2795

September 11, 1990

APPROVED
BY THE CITY COUNCIL

916-449-8210
FAX 916-449-8678

SEP 11 1990

City Council
Sacramento, California

OFFICE OF THE
CITY CLERK

AG 90-176

Honorable Members In Session:

SUBJECT: APPROVAL OF FINAL SUBDIVISION MAP AND AGREEMENT FOR SOUTH WATT BUSINESS PARK - (P-87378)

SUMMARY

Adoption of a resolution approving a Final Subdivision Map and Agreement for South Watt Business Park, located at the northwest corner of Fruitridge Road and Elk Grove - Florin Road, is recommended.

BACKGROUND

On January 2, 1990, the City Council approved a Tentative Subdivision Map by adopting Resolution No. 90-020.

All conditions in the staff subdivision report have been met and the Final Subdivision Map is presented for approval.

FINANCIAL DATA

All subdivision costs are being paid by the subdivider, Buzz Oates Enterprises II, a California General Partnership.

POLICY CONSIDERATION

Pursuant to Sacramento City Code, Article V, Chapter 40.515, and Government Code Section 66458, the City Council may, by resolution, approve final maps and parcel maps. The map presented conforms to all the requirements of the Government Code and Chapter 40 of the City Code, applicable at the time of conditional approval of the Tentative Map. The Final Map is, therefore, recommended for approval.

MBE/WBE EFFORTS

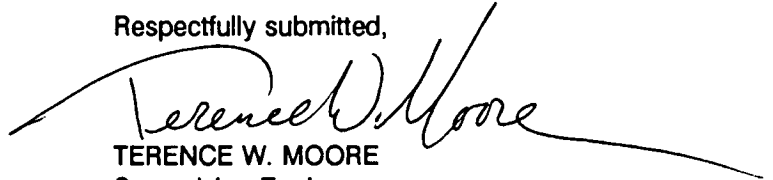
None, since no goods or services are being procured with this action.

City Council
Final Subdivision Map (P-87378)
September 11, 1990
Page 2

RECOMMENDATION


It is recommended that the attached resolution approving the Final Subdivision Map and Agreement be adopted.

Respectfully submitted,



TERENCE W. MOORE
Supervising Engineer

Recommendation Approved:



WALTER J. SLIFE
City Manager

SP:rn
DS2-21.A
08.2890.1

Approved:



MELVIN H. JOHNSON
Director of Public Works

September 11, 1990
District No. 6

Attachment

CONTACT PERSON

Robert R. Jones, Senior Engineer
449-8210

RESOLUTION NO. 90-746

APPROVED
BY THE CITY COUNCIL
SEP 11 1990
OFFICE OF THE
CITY CLERK
AG 90-176

ADOPTED BY THE SACRAMENTO CITY COUNCIL

ON DATE OF _____

**APPROVING FINAL SUBDIVISION MAP AND
AGREEMENT FOR SOUTH WATT BUSINESS PARK
(P-87378)**

WHEREAS, THE COUNCIL OF THE CITY OF SACRAMENTO FINDS AND DETERMINES AS FOLLOWS:

- A. The Final Subdivision Map for South Watt Business Park, located at the northwest corner of Fruitridge Road and Elk Grove - Florin Road, with provisions for its design and improvement, is consistent with the City General Plan and Chapter 40 of the City Code.
- B. The Final Subdivision Map is in substantial compliance with the previously approved tentative map.

NOW, THEREFORE, BE IT RESOLVED BY THE COUNCIL OF THE CITY OF SACRAMENTO AS FOLLOWS:

- 1. The Final Subdivision Map for this project is hereby approved subject to the execution by all parties of the Subdivision Improvement Agreement for that subdivision.
- 2. All offers of dedication shown on said map are hereby accepted subject to the improvement thereof required by the Subdivision Agreement.
- 3. The City Manager and City Clerk be authorized and directed to execute on behalf of the City of Sacramento that certain Subdivision Improvement Agreement between the City and Buzz Oates Enterprises II, a California General Partnership to provide for the subdivision improvements required by the Subdivision Map Act and Chapter 40 (Subdivision Regulations) of the Sacramento City Code.
- 4. The Real Estate Supervisor is authorized and directed to record the above-mentioned agreement in the official records of Sacramento County.

ATTEST:

MAYOR

CITY CLERK

DS2-21.A
08.2890.1

FOR CITY CLERK USE ONLY

RESOLUTION NO.: _____

DATE ADOPTED: _____

SOUTH WATT BUSINESS PARK
LOT 8, PLAT OF JACKMAN TRACT
8 B.M. 37
 CITY OF SACRAMENTO, CALIFORNIA
 1988 SCALE: 1"=100'
 THE SPINK CORPORATION
 Sheet 2 of 2 Sheets



BASIS OF BEARINGS:

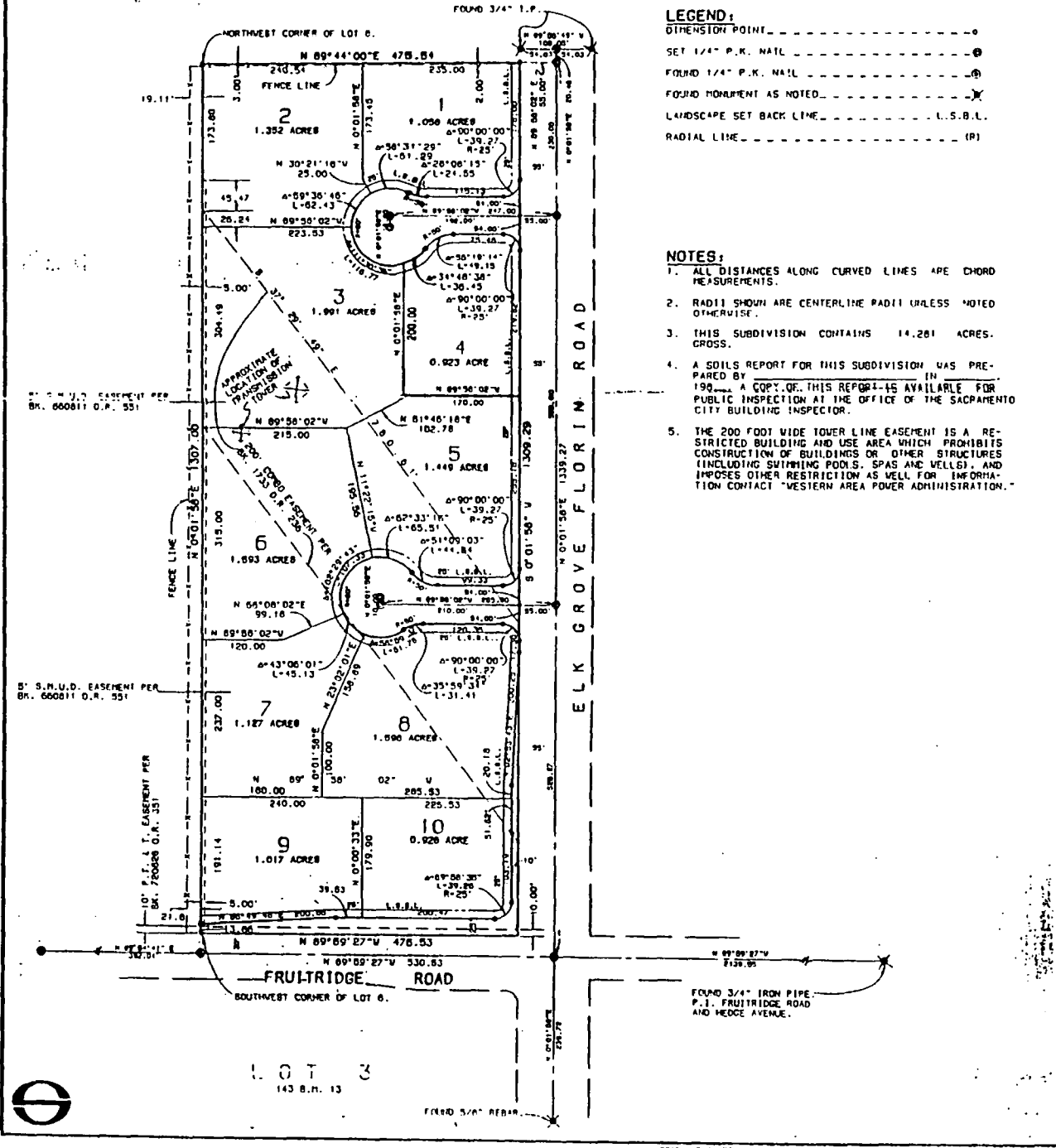
THE BASIS OF BEARINGS OF THIS SURVEY IS IDENTICAL WITH THAT OF THE CENTERLINE OF FRUITRIDGE ROAD, AS SHOWN ON 143 B.M. 13, FROM WHICH BETWEEN FOUND MONUMENTS THE BEARING IS GIVEN AS N. 69° 53' 27" V.

LEGEND:

- DIMENSION POINT -----○
- SET 1/4" P.K. NAIL -----⊙
- FOUND 1/4" P.K. NAIL -----⊙
- FOUND MONUMENT AS NOTED -----X
- LANDSCAPE SET BACK LINE -----L.S.B.L.
- RADIAL LINE -----(R)

NOTES:

1. ALL DISTANCES ALONG CURVED LINES ARE CHORD MEASUREMENTS.
2. RADII SHOWN ARE CENTERLINE RADII UNLESS NOTED OTHERWISE.
3. THIS SUBDIVISION CONTAINS 14.261 ACRES. GROSS.
4. A SOILS REPORT FOR THIS SUBDIVISION WAS PREPARED BY _____ IN _____ 198____. A COPY OF THIS REPORT IS AVAILABLE FOR PUBLIC INSPECTION AT THE OFFICE OF THE SACRAMENTO CITY BUILDING INSPECTOR.
5. THE 200 FOOT WIDE TOWER LINE EASEMENT IS A RESTRICTED BUILDING AND USE AREA WHICH PROHIBITS CONSTRUCTION OF BUILDINGS OR OTHER STRUCTURES (INCLUDING SWIMMING POOLS, SPAS AND WELLS) AND IMPOSES OTHER RESTRICTIONS AS WELL FOR INFORMATION CONTACT WESTERN AREA POWER ADMINISTRATION.





OFFICE OF THE
CITY CLERK

SPECIALIZED SERVICES

CITY OF SACRAMENTO
CALIFORNIA

CITY HALL
ROOM 303
915 I STREET
SACRAMENTO, CA
95814-2671

916-449-8200

September 28, 1990

Buzz Oates Enterprises, a California General Partnership
8615 Elder Creek Road
Sacramento, CA 95828

On September 11, 1990, the Sacramento City Council adopted Resolution No. 90-746 authorizing the execution of Agreement No. 90-176 regarding Subdivision Improvement of South Watt Business Park.

Enclosed, for your records, is one fully certified copy of said agreement and authorizing resolution.

Sincerely,

Virginia Henry
Assistant City Clerk

jb/3.5

Enclosures