



3.11

DEPARTMENT OF
PUBLIC WORKS

DEVELOPMENT SERVICES

CITY OF SACRAMENTO
CALIFORNIA

927 TENTH STREET
ROOM 100
SACRAMENTO, CA
95814-2795

January 29, 1991

APPROVED
BY THE CITY COUNCIL

916-449-8210
FAX 916-449-8678

City Council
Sacramento, California

JAN 29 1991

OFFICE OF THE
CITY CLERK

Honorable Members In Session:

1691-025

SUBJECT: **APPROVAL OF FINAL SUBDIVISION MAP AND AGREEMENT FOR ELDER CREEK GARDENS -
(P-90066)**

SUMMARY

Adoption of a resolution approving a Final Subdivision Map and Agreement for Elder Creek Gardens, located at Elder Creek Road just east of Logan Street, is recommended.

BACKGROUND

On July 24, 1990, the City Council approved a Tentative Subdivision Map by adopting Resolution No. 90-604.

All conditions in the staff subdivision report have been met and the Final Subdivision Map is presented for approval.

FINANCIAL DATA

All subdivision costs are being paid by the subdivider, California Urban Partners, Ltd.

POLICY CONSIDERATION

Pursuant to Sacramento City Code, Article V, Chapter 40.515, and Government Code Section 66458, the City Council may, by resolution, approve final maps and parcel maps. The map presented conforms to all the requirements of the Government Code and Chapter 40 of the City Code, applicable at the time of conditional approval of the Tentative Map. The Final Map is, therefore, recommended for approval.

MBE/WBE EFFORTS

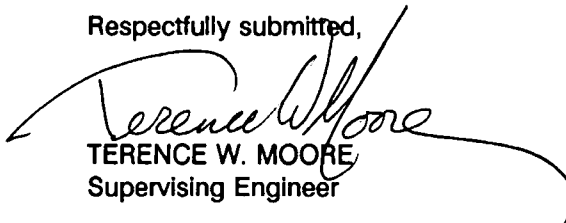
None, since no goods or services are being procured with this action.

City Council
Final Subdivision Map (P-90066)
January 29, 1991
Page 2

RECOMMENDATION

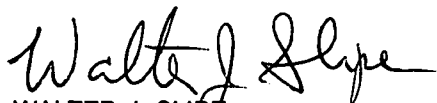
It is recommended that the attached resolution approving the Final Subdivision Map and Agreement be adopted.

Respectfully submitted,



TERENCE W. MOORE
Supervising Engineer

Recommendation Approved:



WALTER J. SLIPE
City Manager

LC:dc
DS1-39.B
01.1691.1

Approved:



MELVIN H. JOHNSON
Director of Public Works

January 29, 1991
District No. 6

Attachment

CONTACT PERSON

Robert R. Jones, Senior Engineer
449-8210

RESOLUTION NO. 91-078

ADOPTED BY THE SACRAMENTO CITY COUNCIL

ON DATE OF _____

APPROVING FINAL SUBDIVISION MAP AND AGREEMENT FOR ELDER CREEK GARDENS (P-90066)

APPROVED
BY THE CITY COUNCIL

JAN 29 1991

OFFICE OF THE
CITY CLERK

WHEREAS, THE COUNCIL OF THE CITY OF SACRAMENTO FINDS AND DETERMINES AS FOLLOWS:

- A. The Final Subdivision Map for Elder Creek Gardens, located at Elder Creek Road just east of Logan Street, with provisions for its design and improvement, is consistent with the South Sacramento Community Plan.
- B. The Final Subdivision Map is in substantial compliance with the previously approved tentative map.

NOW, THEREFORE, BE IT RESOLVED BY THE COUNCIL OF THE CITY OF SACRAMENTO AS FOLLOWS:

- 1. The Final Subdivision Map for this project is hereby approved subject to the execution by all parties of the Subdivision Improvement Agreement for that subdivision.
- 2. All offers of dedication shown on said map are hereby accepted subject to the improvement thereof required by the Subdivision Agreement.
- 3. The City Manager and City Clerk be authorized and directed to execute on behalf of the City of Sacramento that certain Subdivision Improvement Agreement and abstract thereof between the City and California Urban Partners, Ltd., to provide for the subdivision improvements required by the Subdivision Map Act and Chapter 40 (Subdivision Regulations) of the Sacramento City Code.
- 4. The Real Estate Supervisor is authorized and directed to record the above-mentioned agreement in the official records of Sacramento County.

ATTEST:

MAYOR

CITY CLERK

DS1-39.B
01.1691.1

FOR CITY CLERK USE ONLY

RESOLUTION NO.: _____

DATE ADOPTED: _____



CITY MAP
NO SCALE

CR: CREEK GARDEN LIMITED PARTNERSHIP
NORTH BROADWAY, SUITE C
SACRAMENTO, CA 95821

DESCRIPTION:
1.48 AS SHOWN ON THE
"SOUTH SACRAMENTO GARDENS"

SIZES:
ACRES (NET)
ACRES (PROPOSED)

NO:
(EXISTING / PROPOSED)

SIZES:
MINIMUM SIZE 1.5P TO 40.000 1.5P

BER OF LOTS:
20 LOTS
MINIMUM - 1/4 ACRE PER LOT
MAXIMUM - 1/2 ACRE PER LOT

SCHOOL DISTRICT:
SACRAMENTO UNIFIED SCHOOL DISTRICT

RECREATION:
SACRAMENTO PARK & RECREATION

SOURCE OF WATER:
SACRAMENTO

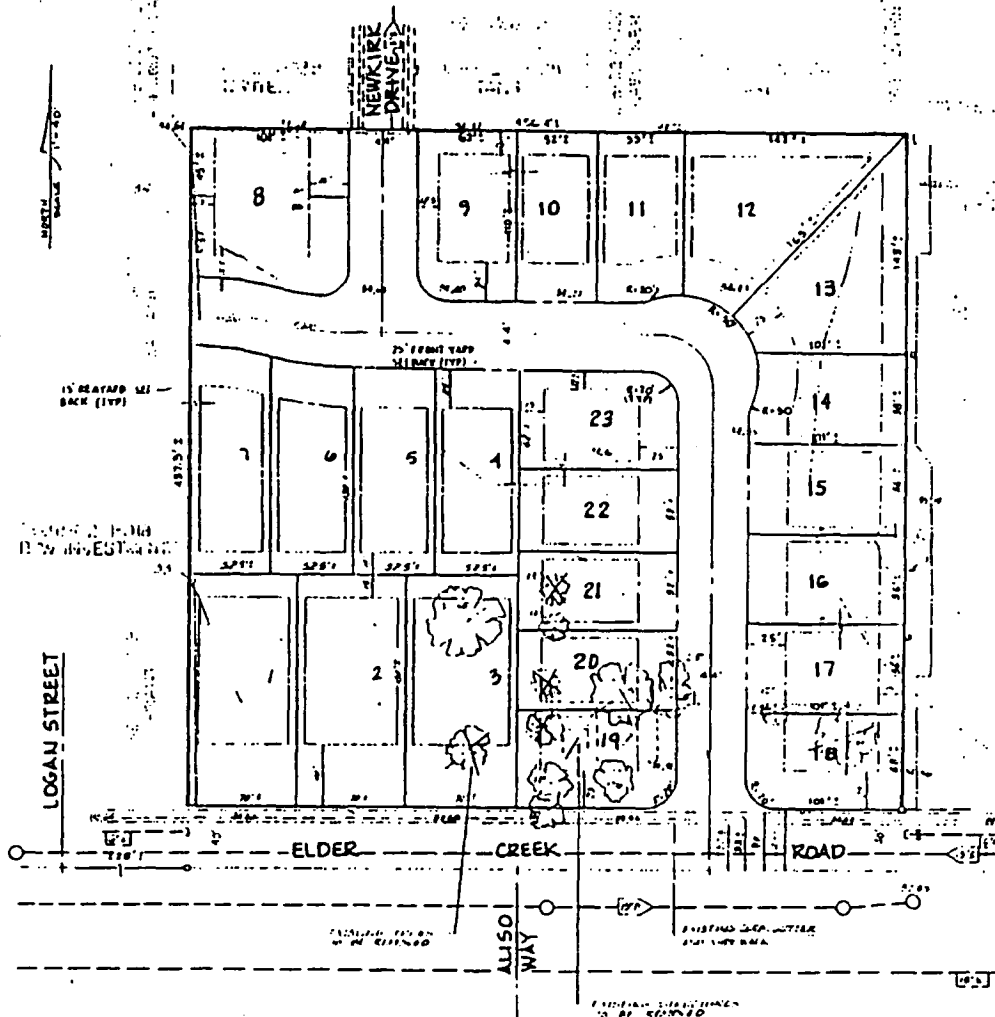
DISTRICT:
SACRAMENTO

UTILIZATION FACILITIES:
SACRAMENTO

RECREATION FACILITIES:
SACRAMENTO

RESOLUTION 90-604

JUL 24 1990



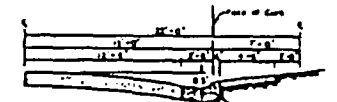
IMPROVEMENT REQUIREMENTS:
IMPROVEMENTS AS REQUIRED BY
CITY OF SACRAMENTO

DENSITY:
24 UNITS / 5.05 ACRES = 4.8 UNITS / ACRE
(MINIMUM 1.5P TO 40.000 1.5P / MAXIMUM 1/2 ACRE PER LOT)

LEGEND:

- JOINT UTILITY POLE
- FIRE HYDRANT
- DROP INLET
- MANHOLE
- WATER LINE, VALVE
- GAS LINE
- SEWER LINE
- SEWER BRANCH
- SEWER PLUMBING BRANCH
- DRAINAGE FLOW
- FENCE
- CONTOUR LINE, ELEVATION
- SPOT ELEVATION
- TREE, TRUNK DIA APPROX
- PRUNED

NOTE:
ALL TREES SHOWN ARE ORNAMENTAL.



44R R.O.W. RESIDENTIAL
TYPICAL HALF-SECTION A-A
NO SCALE

Exhibit A
Tentative Map

GRAPHIC SCALE 1" = 40'
0 20 40 60 80 100 120 140 160

NO. 76 DE-1 ELEVATION 37.227
BASE OF SIGNAL LIGHT
CORNER OF POWER INN &
CREEK.

DESIGNED BY: [Signature]	DESIGNED BY: [Signature]
DRAWN BY: [Signature]	DRAWN BY: [Signature]
CHECKED BY: [Signature]	CHECKED BY: [Signature]

TENTATIVE SUBDIVISION MAP
ELDER CREEK GARDEN
APN NO. 058-0161-003.000. (007)
CITY OF SACRAMENTO CALIFORNIA

AREA
WEST ENGINEERS, INC.
1110 COMMERCIAL BLVD
SACRAMENTO, CALIF. 95811
TEL: (916) 441-1111 FAX: (916) 441-1112
CIVIL ENGINEERING - PLANNING - SURVEYING

DATE: DEC 1989	SCALE: HORIZ 1" = 40'	VERT N/A	JOB NO: 89-102
DATE: DEC 1989	SCALE: HORIZ 1" = 40'	VERT N/A	JOB NO: 89-102



OFFICE OF THE
CITY CLERK

OPERATION SERVICES

CITY OF SACRAMENTO
CALIFORNIA

CITY HALL
ROOM 304
915 I STREET
SACRAMENTO, CA
95814-2671

916-449-5426

February 4, 1991

California Urban Partners, Ltd.
6820 Pacific Avenue, 3rd Floor
Stockton CA 95207

On January 29, 1991, the Sacramento City Council adopted Resolution No. 91-078 authorizing the execution of Agreement No. 91-025 regarding subdivision map for Elder Creek Gardens located on Elder Creek Road just east of Logan Street.

Enclosed, for your records, is one fully certified copy of said agreement and authorizing resolution.

Sincerely,

Valerie A. Burrowes
City Clerk

mls/3.11

Enclosures

cc: Public Works
Risk Management