



# CITY OF SACRAMENTO

12

## DEPARTMENT OF PUBLIC WORKS

ENGINEERING DIVISION

July 15, 1986

THOMAS M. FINLEY  
Engineering Division Manager

City Council  
Sacramento, California

CITY MANAGER'S OFFICE  
**RECEIVED**  
JUL 10 1986

Honorable Members In Session:

SUBJECT: Sacramento Security Park (P-86052)(Job No. 8503) - Approval of Final Parcel Map and Agreement

### SUMMARY

Adoption of a resolution approving a Final Parcel Map and Agreement is requested for Sacramento Security Park, located at the southeast corner of Raley Boulevard and Bell Avenue.

### BACKGROUND

On April 1, 1986 the City Council approved a Tentative Parcel Map by adopting Resolution No. 86-237. The subdivision is a portion of Parker Homes Terrace.

All conditions in the staff subdivision report have been met and the Final Parcel Map is presented for approval.

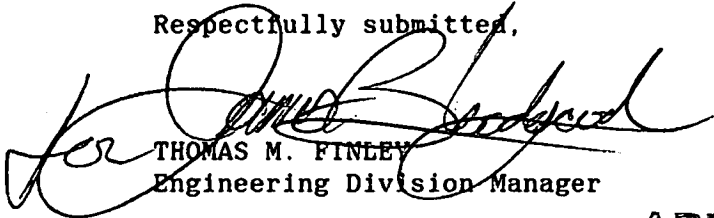
### FINANCIAL

All subdivision costs are being paid by the subdivider, Raybell, a California limited partnership.

### RECOMMENDATION

Adoption of the attached resolution approving the Final Parcel Map and Agreement is recommended.


Respectfully submitted,

  
THOMAS M. FINLEY  
Engineering Division Manager

Recommendation Approved:

  
WALTER J. SLIPE  
City Manager

Approved:

  
MELVIN H. JOHNSON  
Director of Public Works

**APPROVED**  
BY THE CITY COUNCIL

JUL 15 1986

OFFICE OF THE  
CITY CLERK

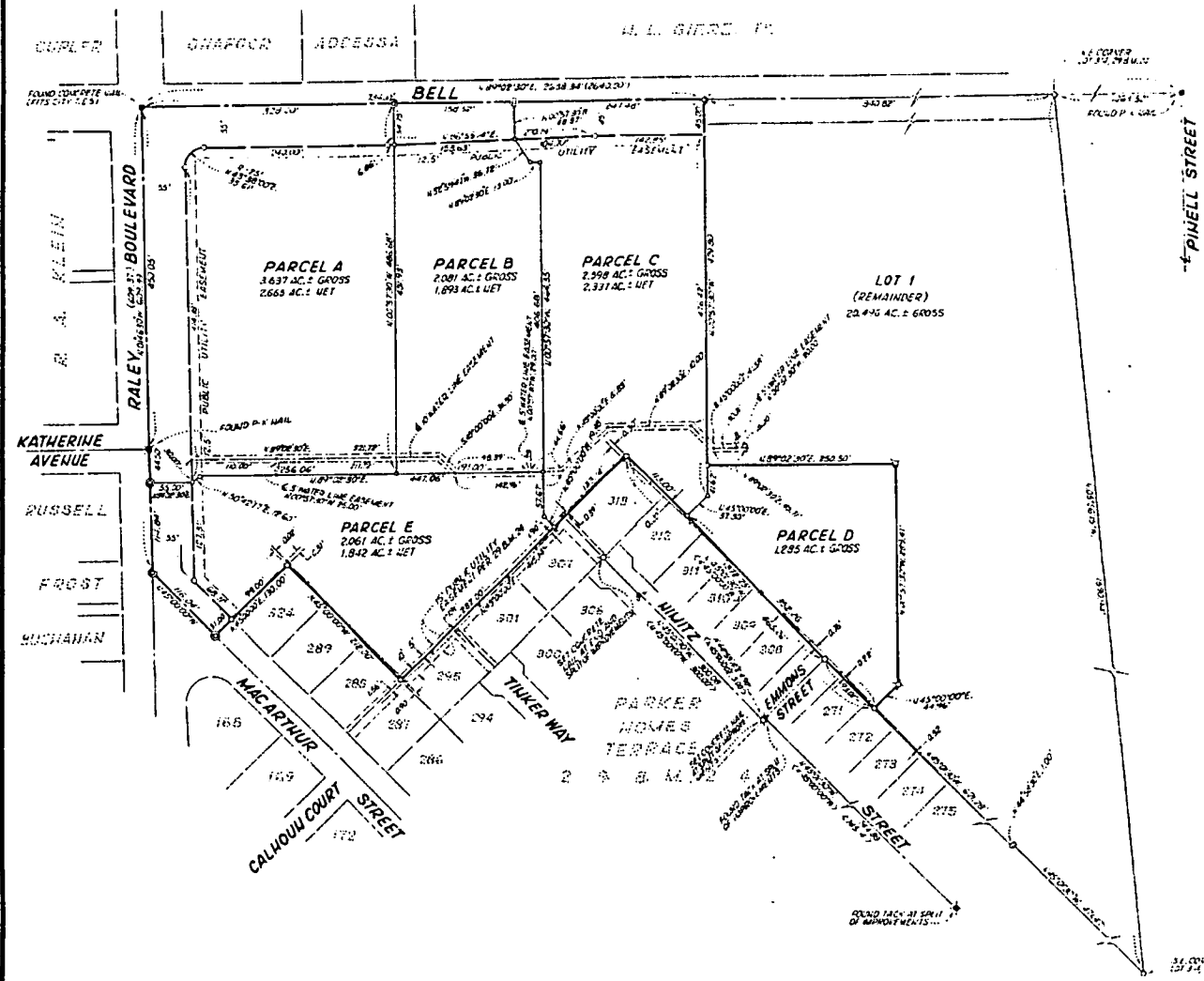
AG 86016

BF:vr  
BF628Ck6  
06.3086

July 15, 1986  
District No. 2

Attachment

PARCEL MAP  
**SACRAMENTO SECURITY PARK**  
 LOT 325 AND A PORTION OF LOT 314, PARKER HOMES TERRACE-29 B.M. 24  
 CITY OF SACRAMENTO, CALIFORNIA  
 SCALE: 1" = 100'  
 MURRAY SMITH AND ASSOCIATES  
 SHEET 2 OF 2



**BASIS OF BEARINGS:**  
 The Basis of Bearings for this parcel map is the centerline of Bell Avenue shown on Parker Homes Terrace (29 B.M. 24) established by found monuments shown hereon. The bearing is  $44^{\circ}02'30"E$ .

**NOTES:**  
 This parcel map contains an area of 11,662 acres, gross, more or less.  
 Measurements along curved lines are chord measurements.  
 The property shown hereon is hereby merged and resubdivided pursuant to Section 66499.2016 of the government code.  
 Standard subdivision improvements shall be provided pursuant to Section 40.811 of the city code.  
 The owner and subdivisor of this property has entered into a recorded agreement with the City of Sacramento by which the City has agreed to waive the requirements of Chapter 40 of the Sacramento City Code to install certain improvements in consideration for the owner and subdivisor's consent to participate in future assessment districts in this area. It is intended that this agreement shall run with the land and bind the owner and subdivisor and his successors in interest.  
 Reciprocal easements for ingress/egress, power, water, drain and public utilities between the parcels shown hereon shall be reserved and/or granted concurrent with the sale or conveyance of said parcels.

- LEGEND:**
- FENCE
  - - - PUBLIC UTILITY EASEMENT (PUE) LINE
  - DIVISION POINT
  - FOUND MONUMENT AS NOTED
  - SET 1/4" LONG P-K NAIL
  - ⊗ SET 1/4" IRON PIPE, R.C.E. 16041
  - ⊕ SET MONUMENT AS NOTED
  - < RECORD PER 29 B.M. 24
  - ( ) RECORD PER B.M. OF SURVEYS 19-94

12

RESOLUTION NO. 86-530

ADOPTED BY THE SACRAMENTO CITY COUNCIL ON DATE OF

APPROVING FINAL PARCEL MAP AND AGREEMENT FOR SACRAMENTO SECURITY PARK (P-86052) (JOB NO. 8503)

WHEREAS, THE COUNCIL OF THE CITY OF SACRAMENTO FINDS AND DETERMINES AS FOLLOWS:

A. The Final Parcel Map for Sacramento Security Park, located at the southeast corner of Raley Boulevard and Bell Avenue (P-86052) (Job No. 8503) with provisions for its design and improvement, is consistent with the North Sacramento Community Plan.

B. The Final Parcel Map is in substantial compliance with the previously approved Tentative Parcel Map.

NOW, THEREFORE, BE IT RESOLVED BY THE COUNCIL OF THE CITY OF SACRAMENTO AS FOLLOWS:

- 1. The Final Parcel Map for Sacramento Security Park, located at the southeast corner of Raley Boulevard and Bell Avenue (P-86052) (Job No. 8503) be, and the same is hereby approved subject to the execution by all parties of the Subdivision Improvement Agreement for that subdivision.

2. All offers of dedication shown on said map are hereby accepted, subject to the improvement thereof required by the Subdivision Agreement.

3. The City Manager and City Clerk be authorized and directed to execute on behalf of the City of Sacramento that certain Subdivision Improvement Agreement and abstract thereof between the City and Raybell, a California limited partnership, to provide for the subdivision improvements required by the Subdivision Map Act and Chapter 40 (Subdivision Regulations) of the Sacramento City Code.

4. The Real Estate Supervisor is authorized and directed to record the Abstract of the above-mentioned Agreement in the official records of Sacramento County.

\_\_\_\_\_  
MAYOR

ATTEST:

\_\_\_\_\_  
CITY CLERK

BF628Ck6

July 23, 1986

Raybell  
10969 Trade Center Drive  
Rancho Cordova, CA 95670

Dear Gentlemen:

On July 15, 1986, the Sacramento City Council adopted a Resolution No. 86-530 authorizing the execution of Agreement No. 86016 for subdivision improvements at Sacramento Security Park, located at the southeast corner of Raley Boulevard and Bell Avenue.

Enclosed, for your records, is one fully certified copy of said agreement and authorizing resolution.

Sincerely,

LORRAINE MAGANA, CITY CLERK

Janice Beaman  
Deputy City Clerk

JB/dah/12  
Enclosure

cc: Public Works  
Risk Management