



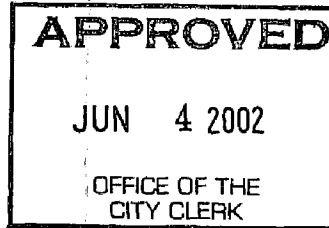
3.1

DEPARTMENT OF
PUBLIC WORKS

CITY OF SACRAMENTO
CALIFORNIA

Special Districts
1231 I Street, 3rd Floor
Sacramento, CA 95814-2700

DEVELOPMENT SERVICES DIVISION



PH. (916) 264-7113
FAX (916) 264-7480

City Council
Sacramento, California

Honorable Members in Session:

**SUBJECT: NORTHSIDE SUBDIVISION UNITS 1 AND 2 MAINTENANCE DISTRICT –
PUBLIC HEARING ON FY 2002/03 ANNUAL REPORT**

LOCATION AND COUNCIL DISTRICT:

The district is located north of Main Avenue between Rio Linda Boulevard and Marysville Boulevard, in Council District 2 (see attached Exhibit A).

RECOMMENDATION:

This report recommends that the City Council:

- Adopt Resolution Overruling Protests for the Northside Subdivision Maintenance District for FY 2002/03.
- Adopt Resolution Confirming Diagram and Assessment and for Levying Assessment for the Northside Subdivision Maintenance for FY 2002/03.
- Adopt Resolution Amending FY 2002/03 Budget for the Northside Subdivision Maintenance District.

CONTACT PERSON:

Ron Wicky, Special Districts Analyst, 264-5628

FOR COUNCIL MEETING OF: June 4, 2002

Department of
PUBLICWORKS
CITY OF
SACRAMENTO

City Council
Northside Subdivision – Public Hearing
May 16, 2002

SUMMARY:

The recommended Council action will levy the FY 2002/03 annual assessment for the Northside Subdivision Maintenance District. The district was established in 1992 to recover the annual costs of maintenance related to the wetlands mitigation program for Northside Subdivision.

COMMITTEE/COMMISSION ACTION:

None.

BACKGROUND INFORMATION:

On January 7, 1992, City Council approved formation of the Northside Subdivision Maintenance District. The district provides funding for maintenance activities associated with the Northside Subdivision Wetlands Mitigation Program. The mitigation program is in compliance with the U.S. Army Corps of Engineers' permit, issued to the developer of Northside Subdivision on June 12, 1990. The activities include cleaning of the sand and grease trap separator for the storm drain system, disposal of the contents, and mowing and litter pickup. The district will also fund maintenance activities for the landscaped area along Marysville Boulevard. On May 14, 2002, City Council adopted a Resolution of Intention that set a hearing on this date for the Annual Report (See attached Exhibit B). As of this date, no protests have been received.

FINANCIAL CONSIDERATIONS:

The cost of maintenance for the Northside Subdivision Wetlands Mitigation Program, together with the landscaped area along Marysville Boulevard, will be funded through the maintenance district. The total cost for FY 2002/03 is projected at \$6,160. Maintenance costs will be assessed to the 112 single-family lots within the district. The annual maintenance cost for a single-family residential lot is projected at \$55 per unit.

FY 2000/01 Assessed	FY 2002/03 Budget	Surplus/From Prior Year	FY 2002/03 Assessed
\$7,728	\$70,235	\$64,075	\$6,160

The costs are detailed in the Engineer's Report on file with the City Clerk. This maintenance district is self-supporting and has no impact on the general fund.

ENVIRONMENTAL CONSIDERATIONS:

Under CEQA guidelines, administration and annual maintenance do not constitute a project and therefore exempt from review.

City Council
Northside Subdivision - Public Hearing
May 16, 2002

POLICY CONSIDERATIONS:

These proceedings are being conducted in accordance with Title 3.124 of the Sacramento City Code.

ESBD CONSIDERATIONS:


This annual budget and assessment levy process does not involve the contractor selection process. The contract to perform the maintenance will be let in July of this year.

Respectfully submitted,



Gary Alm, Manager
Development Services

RECOMMENDATION APPROVED:

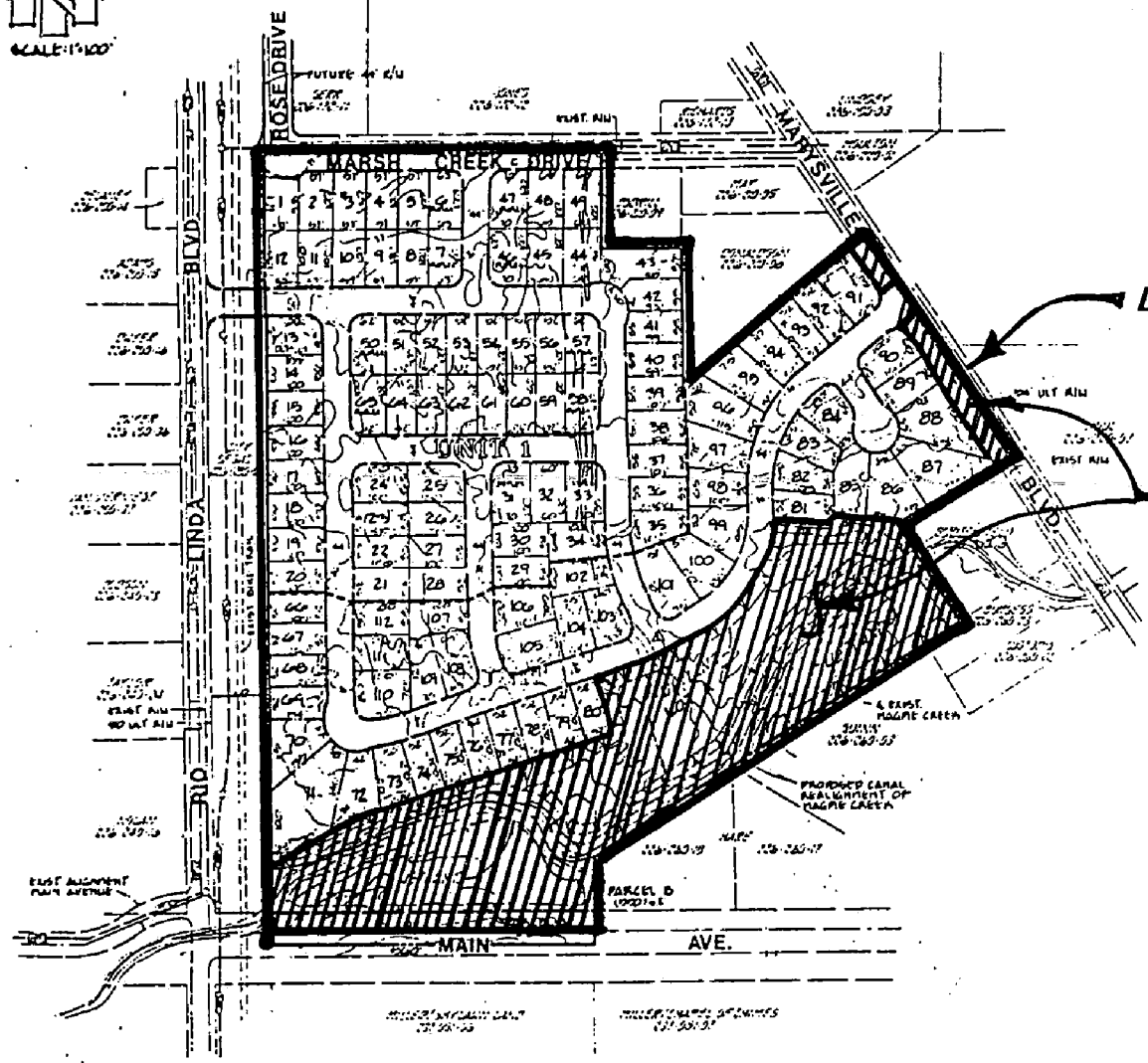


ROBERT P. THOMAS
City Manager

Approved:



Michael Kashwagi
Director of Public Works



DISTRICT BOUNDARY

MAINTENANCE AREA

NORTHSIDE SUBDIVISION MAINTENANCE DISTRICT

EXHIBIT A

EXHIBIT B

NORTHSIDE SUBDIVISION MAINTENANCE DISTRICT FY 2002/03 SCHEDULE

May 14, 2002 Council Adopted Resolution of Intention and Set Date for Hearing

May 2002 Publish Notice of Hearing

June 4, 2002 Hold Hearing – Council Considers All Protests, Orders Annual Levy

APPROVED
JUN 4 2002
OFFICE OF THE
CITY CLERK

RESOLUTION NO. 2002-338

ADOPTED BY THE SACRAMENTO CITY COUNCIL

ON DATE OF _____

**RESOLUTION OVERRULING PROTESTS FOR THE
NORTHSIDE SUBDIVISION MAINTENANCE DISTRICT
FOR FY 2002/03**

BE IT RESOLVED BY THE COUNCIL OF THE CITY OF SACRAMENTO:

On June 4, 2002, the City Council opened a public hearing on the Resolution of Intention and the Engineer's Annual Report for Northside Subdivision Maintenance District, City of Sacramento, County of Sacramento, State of California.

At or before the time set for the hearing, certain interested persons made protests or objections to the proposed maintenance, the extent of the assessment district, or the proposed assessment.

The City hereby overrules each of these protests, written or oral.

The City Council finds that the protest against the proposed maintenance (including all written protests not withdrawn in writing before the conclusion of the protest hearing) is made by the owners of less than one-half of the area of the land to be assessed for the improvement.

MAYOR

ATTEST:

CITY CLERK

FOR CITY CLERK USE ONLY

RESOLUTION NO.: _____

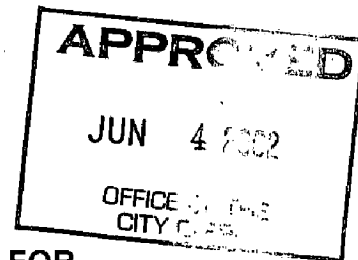
DATE ADOPTED: _____

Λ

RESOLUTION NO. 2002-339

ADOPTED BY THE SACRAMENTO CITY COUNCIL

ON DATE OF _____



**RESOLUTION CONFIRMING DIAGRAM AND ASSESSMENT FOR
LEVYING ASSESSMENTS FOR THE NORTHSIDE SUBDIVISION
MAINTENANCE DISTRICT FOR FY 2002/03**

BE IT RESOLVED BY THE COUNCIL OF THE CITY OF SACRAMENTO:

1. Pursuant to Title 3.124 of the Sacramento City Code, the City Council directed the Director of Public Works as the Engineer of Work for the Northside Subdivision Maintenance District to prepare and file an Annual Report for the FY 2002/03.
2. The Engineer of Work filed the Annual Report on May 14, 2002, and the City Council adopted its Resolution of Intention to levy and collect assessments within the assessment district for FY 2002/03 and set a public hearing to be held at 2:00 p.m. on June 4, 2002, in the meeting place of the City Council, City Hall, 2nd Floor, Sacramento, California. Notice of the hearing was given in the time and manner required by law.
3. At the public hearing, the City Council afforded to every interested person an opportunity to make a protest to the Annual Report, either in writing or orally, and the City Council has considered each protest.
4. The City Council hereby confirms the diagram and assessment as set forth in the Annual Report to the Engineer of Work and hereby levies the assessment set forth therein for FY 2002/03.

MAYOR

ATTEST:

CITY CLERK

FOR CITY CLERK USE ONLY

7

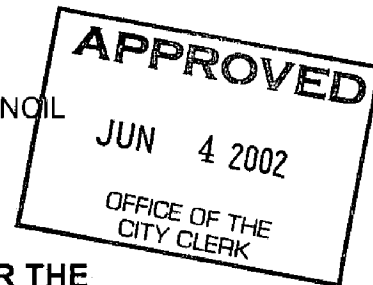
RESOLUTION NO.: _____

DATE ADOPTED: _____

RESOLUTION NO. 2002 340

ADOPTED BY THE SACRAMENTO CITY COUNCIL

ON DATE OF _____



**RESOLUTION AMENDING THE FY 2002/03 BUDGET FOR THE
NORTHSIDE SUBDIVISION MAINTENANCE DISTRICT**

BE IT RESOLVED BY THE COUNCIL OF THE CITY OF SACRAMENTO:

- 1. The FY 2002/03 Revenue Budget for the Northside Subdivision Maintenance District is hereby adopted as follows:

<u>Department</u>		
Utilities	223-330-3343-4384	\$ 5,200
Public Works	223-310-3121-4390	3,450
	223-310-3197-4384	1,052
	223-310-3197-4390	716
Finance	223-110-1131-4390	817
Contingency	223-710-7012-4999	<u>59,000</u>
	Total	\$70,235

(See attached budget preparation table – Attachment A)

- 2. The FY 2002/03 Expenditure Budget (70,235 – 64,075 surplus) for the Northside Subdivision Maintenance District is adopted as follows:

223-310-3212-3657 \$6,160

MAYOR

ATTEST:

CITY CLERK

FOR CITY CLERK USE ONLY

RESOLUTION NO.: _____

DATE ADOPTED: _____

**Attachment A
Budget Preparation Table**

Northside Subdivision Maintenance District FY 2002/03

FUND	ACT	AGY	ORGN	OBJ/REV	CURRENT BUDGET	REVISED BUDGET	INCREASE (DECREASE)	BUDGET REGERENCE
223	C	310	3121	3657	7,728	6,160	(1,568)	A
				RB Totals:	7,728	6,160	(1,568)	
223	C	110	1131	4390	785	817	32	B
223	C	310	3121	4390	3,000	3,450	450	C
223	C	310	3131	4390	450	0	(450)	D
223	C	310	3197	4384	1,880	1,052	(828)	E
223	C	310	3197	4390	1,260	716	(544)	
223	A	330	3343	4384	0	5,200	5,200	F
223	C	480	4828	4384	4,200	0	(4,200)	G
223	C	480	4828	4390	1,000	0	(1,000)	
223	C	710	7012	4999	54,153	59,000	4,847	H
				EB Totals:	66,728	70,235	3,507	

FOR CITY CLERK USE ONLY

9

RESOLUTION NO.: _____

DATE ADOPTED: _____

- SINCE 1911 -

1115 H Street, P.O. Box 1048, Sacramento, California 95812.
Telephone (916) 444-2355 • Fax (916) 444-0636

SAC. CITY CLERK
915 I ST. #304
SACRAMENTO, CA - 95814

PROOF OF PUBLICATION

(2015.5 C.C.P.)

State of California)
County of Sacramento) ss

Notice Type: GSR SAC CITY RESOLUTION-1 PUB

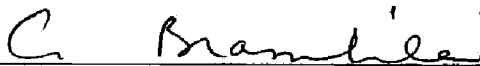
Ad Description: AD NO 9470

I am a citizen of the United States; I am over the age of eighteen years, and not a party to or interested in the above entitled matter. I am the principal clerk of the printer and publisher of the DAILY RECORDER, a daily newspaper published in the English language in the City of Sacramento, County of Sacramento, and adjudged a newspaper of general circulation as defined by the laws of the State of California by the Superior Court of the County of Sacramento, State of California, under date May 2, 1913, Case No. 16,180. That the notice, of which the annexed is a printed copy, has been published in each regular and entire issue of said newspaper and not in any supplement thereof on the following dates, to-wit:

05/28/02

Executed on: 05/28/2002
At Los Angeles, California

I certify (or declare) under penalty of perjury that the foregoing is true and correct.


Signature

This space for filing stamp only

SC#: 399087

RESOLUTION NO. 2002-271
ADOPTED BY THE SACRAMENTO CITY COUNCIL
ON DATE OF MAY 14, 2002
RESOLUTION OF INTENTION TO ORDER IMPROVEMENTS FOR FY 2002/03 FOR NORTHSIDE SUBDIVISION MAINTENANCE

1. The City Council intends to levy and collect assessments within the Northside Subdivision Maintenance District during fiscal year 2002/03. The area of land to be assessed is located in the City of Sacramento, Sacramento County.

2. The maintenance of improvements to be made in this assessment district is generally described as follows:

Wetlands: The work to be performed consists of the special monitoring, maintenance and repair of the designated wetland areas as identified in the Corps of Engineers Nationwide Permit, issued on June 12, 1990, for Northside Subdivision (hereafter referred to as "Corps Permit"). Specifically, the work may include, but not be limited to, monitoring and maintenance of seasonal wetlands, inspection and minor repairs to basin inlets and outlets, mowing fire breaks, litter control and patrolling, road maintenance, minor bank repairs, inspection and maintenance of oil/sand interceptors, keeping of contractors' records, and any related work necessary to comply with the conditions of said Corps Permit. Pumping, hauling and disposal of collected wastes shall be in accordance with all appropriate state, federal and local regulations. The work does not include general maintenance of the drainage channel as normally provided by the City of Sacramento.

Landscaping and Masonry Wall: The work to be performed consists of furnishing all tools, equipment, apparatus, facilities, labor, material, supplies and utilities necessary or desirable to maintain the masonry walls, landscaping and irrigation systems. Maintenance work may include, but not be limited to, periodic mowing of grass, trimming of trees and shrubs, and fertilizing, together with regular furnishing of water for irrigation of all irrigation of all plant material, and the repair, maintenance and replacement of the irrigation system, planted materials and amenities.

Certain types of the unscheduled maintenance may also be performed, but only when specifically authorized by the City of Sacramento. These tasks include plant replacement, turf and grassland seeding, insect, weed and rodent control, erosion control, maintaining/repairing masonry walls, channel repairs, hauling and dumping debris, maintaining floodway improvements, maintaining areas adjacent to the floodway right-of-way, and repair of damage due to vandalism, flood or fire.

3. In accordance with this Council's resolution directing the filing of any Annual Report, the Engineer of Work has filed with the City Clerk the report required by Chapter 3.124, Sacramento City Code. All interested persons are referred to that report for a full and detailed description of the improvements, the boundaries of the assessment district, and the proposed assessments upon assessable lots and parcels of land within the assessment district.

4. On Tuesday, the 4th day of June, 2002, at the hour of 2:00 p.m., the City Council will conduct a public hearing on the

proposed annual assessment. The hearing will be held at the meeting place of the City Council located in the City Hall, 915 I Street, 2nd Floor, Sacramento, California.

5. The City Clerk is authorized and directed to give the notice of hearing required by Chapter 3.124 of the Sacramento City Code.

HEATHER FARGO, MAYOR
ATTEST:
VALERIE BURROWES, CITY CLERK
05/28/02

SC- 399087#

**ENGINEER'S REPORT
FY 2002/03
NORTHSIDE SUBDIVISION MAINTENANCE DISTRICT**

The undersigned respectfully submits the enclosed report as directed by the City Council.

Dated: May 14, 2002

Michael Kashiwagi, Director of Public Works
City of Sacramento, Engineer of Work

By:  _____

I HEREBY CERTIFY that the enclosed Engineer's Report, together with Assessment and Assessment Diagram, thereto attached, was filed with me on the 14th day of May, 2002.

Valerie A. Burrowes, City Clerk
City of Sacramento, Sacramento County, California

By:  _____

I HEREBY CERTIFY that the enclosed Engineer's Report, together with Assessment and Assessment Diagram, thereto attached, was approved and confirmed by the City Council of the City of Sacramento, California, on the 14th day of June, 2002.

 Valerie A. Burrowes, City Clerk
City of Sacramento, Sacramento County, California

By:  _____

ENGINEER'S REPORT

NORTHSIDE SUBDIVISION MAINTENANCE DISTRICT

MICHAEL KASHIWAGI, Engineer of Work for Northside Subdivision Maintenance District, City of Sacramento, County of Sacramento, State of California, makes this report, as directed by the City Council pursuant to Chapter 81 of the Sacramento City Code.

The improvement maintenance work, which is the subject of this report (hereafter referred to as the "work") is briefly described in two parts as follows:

Part 1 The work described herein is to be carried out in the lower Magpie Creek floodway corridor within the City limits between Rio Linda Boulevard and Marysville Boulevard. This includes the creek channel, wetlands, and adjacent areas.

The work to be performed consists of the special monitoring, maintenance, and repair of the designated wetland areas as identified in the Corps of Engineers Nationwide permit issue on June 12, 1990, for Northside Subdivision (hereafter referred to as "Corps Permit"). Specifically, the work may include, but is not limited to, monitoring and maintenance of seasonal wetlands, inspection and minor repairs to basin inlets and outlets, mowing fire breaks, litter control and patrolling, road maintenance, minor bank repairs, inspection and maintenance of oil/sand interceptors, keeping of contractor's records, and any related work necessary to comply with the conditions of said Corps Permit. Pumping, hauling, and disposal of collected wastes shall be in accordance with all appropriate state, federal, and local regulations. The work does not include general maintenance of the drainage channel as normally provided by the City of Sacramento.

Certain types of unscheduled maintenance may also be performed, but only when specifically authorized by the City of Sacramento. These tasks include plant replacement, seeding, insect, weed and rodent control, erosion control, channel repairs, basin renovation, maintaining floodway improvements, and repair of damage due to vandalism, flood, or fire.

Part 2 The work described herein is to be carried out when the improvements (masonry wall and landscaping) are built and dedicated to the City. The work will be performed in the landscaped area on Marysville Boulevard within the Northside Subdivision area, and more particularly described on plans and specifications approved by the City of Sacramento on file at the City of Sacramento, Department of Parks and Community Services, 1231 "I" Street, Room 400, Sacramento, California 95814.

The work to be performed consists of furnishing all tools, equipment, apparatus,

facilities, labor, material, supplies, and utilities necessary or desirable to maintain the masonry walls, landscaping and irrigation systems. Maintenance work may include, but not be limited to, periodic mowing of grass, trimming of trees and shrubs, and fertilizing, together with the regular furnishing of water for irrigation of all plant material, and the repair, maintenance, and replacement of the irrigation system, planted materials, and amenities. Maintenance of masonry walls includes periodic repair as required.

Funds raised for the above-described maintenance work shall be based on annual benefit assessment apportioned to land benefitting from the work and within the boundaries of the maintenance district. The Council sets the assessment each year after receiving and reviewing an Engineer's Report and holding a public hearing.

This report includes the following attached exhibits:

EXHIBIT A -- An estimate of the cost of the work.

EXHIBIT B -- Schematic diagram of area of work.

EXHIBIT C -- A statement of the method by which the undersigned determined the amount proposed to be assessed against each parcel, based on benefits to be derived by each parcel, respectively, from the work.

EXHIBIT D -- An assessment roll showing the amount proposed to be specially assessed against each parcel of real property within this maintenance district. Each parcel is described by County Assessor's parcel number, and each parcel is also assigned a separate "assessment number" for the purposes of this proceeding.

EXHIBIT E -- A list of the names and addresses of the owners of real property within this maintenance district, as shown on the last equalized assessment roll for taxes, or as known to the Clerk. The list is keyed to Exhibit D by assessment number.

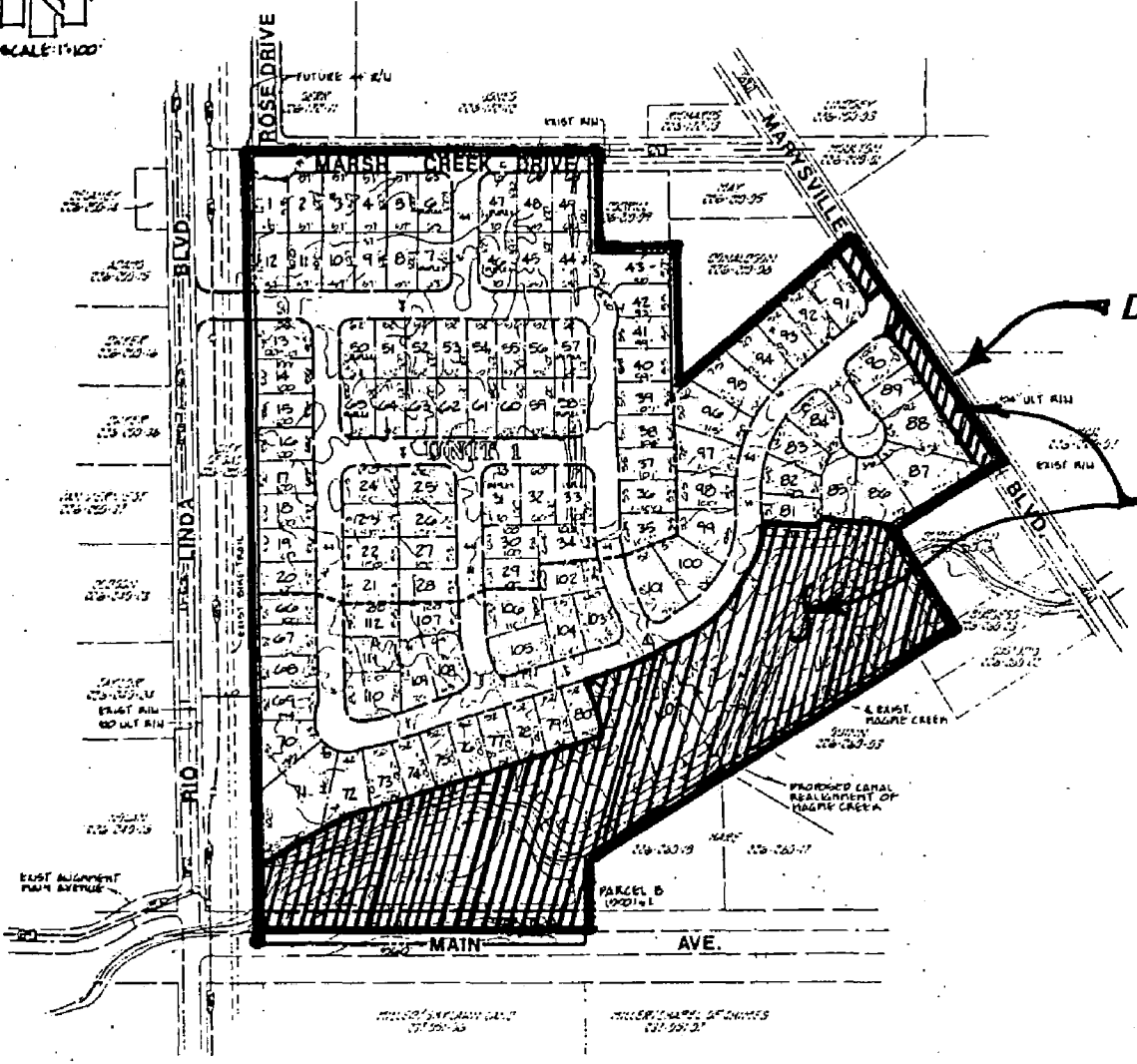
EXHIBIT F -- A diagram showing all of the parcels of real property within this maintenance district. The diagram is keyed to Exhibit D by assessment number.

Respectfully submitted,

Michael Kashiwagi, Director of Public Works
City of Sacramento, Sacramento County
State of California

EXHIBIT A
NORTHSIDE SUBDIVISION MAINTENANCE DISTRICT
SUMMARY OF THE COSTS IN THE DISTRICT
FISCAL YEAR 2002/2003

<u>DESCRIPTION</u>	<u>ITEMIZED COST</u>
I. Monitoring Program	\$0
II. Maintenance Tasks	
a) Contracts	
Wetlands Maintenance Tasks	\$3,200
Landscape Maintenance	\$916
b) Unscheduled Maintenance	
Wetlands Maintenance Tasks	\$1,000
Landscape Maintenance	\$100
c) Miscellaneous	
Utilities	<u>\$36</u>
Total Maintenance Tasks	\$5,252
III. Administration	
a) Wetlands (Utilities)	\$1,000
b) Landscaping (Streets)	\$716
c) Reporting (Special Districts)	<u>\$3,450</u>
Total Administration	\$5,166
IV. Contingency	\$59,000
V. Annual Billing & Administration	<u>\$817</u>
Total Budget	\$70,235
VI. Surplus/(Deficit) From Previous Year	<u>\$64,075</u>
Total Assessment To Property Owners	\$6,160



DISTRICT BOUNDARY

MAINTENANCE AREA

**NORTHSIDE SUBDIVISION
MAINTENANCE DISTRICT**

EXHIBIT B

EXHIBIT C

NORTHSIDE SUBDIVISION MAINTENANCE DISTRICT

METHOD OF SPREAD

The following action describes the proposed method of assessing the annual maintenance costs for the Northside Subdivision Maintenance District to each parcel in the district in relation to the amount of benefit received. Costs for this district are assessed to each parcel within the district boundary except for those parcels owned by public agencies or dedicated for public use.

The costs of maintenance of the work, more particularly described in Exhibit A to this report will be spread equally to all single-family parcels within this subdivision.

The cost of all incidental expenses, including preparation of Engineer's Report, annual proceedings, and district administration, will be spread equally to all single-family parcels within the district.

The "total" number of single-family parcels" in the district was determined from the actual number of recorded lots of Northside Unit #1 and Unit #2. The "single-family assessment" was calculated by taking the total cost of the district and dividing it equally by the "total number of single-family parcels" in the district. The "single-family assessment" was spread equally to each recorded single-family lot within the recorded subdivision of Northside Unit #1 and Unit #2.

EXHIBIT D
ASSESSMENT ROLL 2002/2003
NORTHSIDE SUBDIVISION MAINTENANCE DISTRICT

NO.	PARCEL DESCRIPTION APN #	AMOUNT
1	22602100110000	\$55.00
2	22602100120000	\$55.00
3	22602100130000	\$55.00
4	22602100140000	\$55.00
5	22602100150000	\$55.00
6	22602100160000	\$55.00
7	22602100170000	\$55.00
8	22602100180000	\$55.00
9	22602100190000	\$55.00
10	22602100200000	\$55.00
11	22602100210000	\$55.00
12	22602100220000	\$55.00
13	22602100230000	\$55.00
14	22602100240000	\$55.00
15	22602100250000	\$55.00
16	22602100260000	\$55.00
17	22602100270000	\$55.00
18	22602100280000	\$55.00
19	22602100290000	\$55.00
20	22602100300000	\$55.00
21	22602100310000	\$55.00
22	22602100320000	\$55.00
23	22602100330000	\$55.00
24	22602100340000	\$55.00
25	22602100350000	\$55.00
26	22602100360000	\$55.00
27	22602100370000	\$55.00
28	22602100380000	\$55.00
29	22602100390000	\$55.00
30	22602100400000	\$55.00
31	22602100410000	\$55.00
32	22602100420000	\$55.00
33	22602100430000	\$55.00
34	22602100440000	\$55.00
35	22602100450000	\$55.00
36	22602100460000	\$55.00
37	22602100470000	\$55.00
38	22602100480000	\$55.00
39	22602100490000	\$55.00
40	22602100500000	\$55.00
41	22602100510000	\$55.00
42	22602100520000	\$55.00
43	22602100980000	\$55.00

EXHIBIT D
ASSESSMENT ROLL 2002/2003
NORTHSIDE SUBDIVISION MAINTENANCE DISTRICT

NO.	PARCEL DESCRIPTION APN #	AMOUNT
44	22602100540000	\$55.00
45	22602100550000	\$55.00
46	22602100560000	\$55.00
47	22602100570000	\$55.00
48	22602100580000	\$55.00
49	22602100590000	\$55.00
50	22602100600000	\$55.00
51	22602100610000	\$55.00
52	22602100620000	\$55.00
53	22602100630000	\$55.00
54	22602100640000	\$55.00
55	22602100650000	\$55.00
56	22602100660000	\$55.00
57	22602100670000	\$55.00
58	22602100680000	\$55.00
59	22602100690000	\$55.00
60	22602100700000	\$55.00
61	22602100710000	\$55.00
62	22602100720000	\$55.00
63	22602100730000	\$55.00
64	22602100740000	\$55.00
65	22602100750000	\$55.00
66	22602500200000	\$55.00
67	22602500190000	\$55.00
68	22602500180000	\$55.00
69	22602500170000	\$55.00
70	22602500160000	\$55.00
71	22602500150000	\$55.00
72	22602500140000	\$55.00
73	22602500130000	\$55.00
74	22602500120000	\$55.00
75	22602500110000	\$55.00
76	22602500100000	\$55.00
77	22602500090000	\$55.00
78	22602500080000	\$55.00
79	22602500070000	\$55.00
80	22602500060000	\$55.00
81	22602100860000	\$55.00
82	22602100850000	\$55.00
83	22602100840000	\$55.00
84	22602100830000	\$55.00
85	22602100820000	\$55.00
86	22602100810000	\$55.00

EXHIBIT D
ASSESSMENT ROLL 2002/2003
NORTHSIDE SUBDIVISION MAINTENANCE DISTRICT

PARCEL DESCRIPTION		
NO.	APN #	AMOUNT
87	22602100800000	\$55.00
88	22602100790000	\$55.00
89	22602100780000	\$55.00
90	22602100770000	\$55.00
91	22602100950000	\$55.00
92	22602100940000	\$55.00
93	22602100930000	\$55.00
94	22602100920000	\$55.00
95	22602100910000	\$55.00
96	22602100900000	\$55.00
97	22602100890000	\$55.00
98	22602100880000	\$55.00
99	22602100870000	\$55.00
100	22602500330000	\$55.00
101	22602500320000	\$55.00
102	22602500310000	\$55.00
103	22602500300000	\$55.00
104	22602500290000	\$55.00
105	22602500280000	\$55.00
106	22602500270000	\$55.00
107	22602500260000	\$55.00
108	22602500250000	\$55.00
109	22602500240000	\$55.00
110	22602500230000	\$55.00
111	22602500220000	\$55.00
112	22602500210000	\$55.00

EXHIBIT E
MAILING LIST
NORTHSIDE SUBDIVISION MAINTENANCE DISTRICT

NO.	OWNERS NAME	OWNERS ADDRESS	CITY	ST	ZIP
1	Tepner, Robert/Paula	800 Marsh Creek Dr	Sacramento	CA	95838
2	Pendergast, John/Jan	804 Marsh Creek Dr	Sacramento	CA	95838
3	Pace, Trina	808 Marsh Creek Dr	Sacramento	CA	95838
4	Easley, Robert/Pamela	812 Marsh Creek Dr	Sacramento	CA	95838
5	Glance, John/Lisa	816 Marsh Creek Dr	Sacramento	CA	95838
6	Bigalbal, Rustico/Rubie	820 Marsh Creek Dr	Sacramento	CA	95838
7	Bailey, Lynn/Lori	821 Hunters Creek	Sacramento	CA	95838
8	Ponce De Leon, Maria	817 Hunters Creek	Sacramento	CA	95838
9	Busch, Dayton/Karin	813 Hunters Creek	Sacramento	CA	95838
10	Barnes, James	809 Hunters Creek	Sacramento	CA	95838
11	Cayssials, Michael	805 Hunters Creek	Sacramento	CA	95838
12	Taylor, Henry/Beatrice	801 Hunters Creek	Sacramento	CA	95838
13	Twomey, Howard	4967 Wind Creek Dr	Sacramento	CA	95838
14	Walter, Ronald	4963 Wind Creed Dr	Sacramento	CA	95838
15	Banks, Charles	4959 Wind Creed Dr	Sacramento	CA	95838
16	Brisby, Steven	4955 Wind Creek Dr	Sacramento	CA	95838
17	Mamerto, Franco/Lina	4951 Wind Creek Dr	Sacramento	CA	95838
18	Woods-Olson, Cimarron	4947 Wind Creek Dr	Sacramento	CA	95838
19	Arriaga, Fernando/Virginia	4943 Wind Creek Dr	Sacramento	CA	95838
20	Kee, David/Carolyn	4939 Wind Creek Dr	Sacramento	CA	95838
21	Singh, Raghbir	4938 Wind Creek Dr	Sacramento	CA	95838
22	Sandhu, Jasbir/Manjit	4942 Wind Creek Dr	Sacramento	CA	95838
23	Ramos, Joseph/Mary	4946 Wind Creek Drive	Sacramento	CA	95838
24	Croddy, Michael D	4950 Wind Creek Dr	Sacramento	CA	95838
25	Worrell, Garry E/Angela	4951 Pine Nut Way	Sacramento	CA	95838
26	Goldsmith, Carolyne/David	4947 Pine Nut Wy	Sacramento	CA	95838
27	Beeler, Nancy Sue	4943 Pine Nut Way	Sacramento	CA	95838
28	Robinson, Anthony/Karen	4939 Pine Nut Wy	Sacramento	CA	95838
29	Polvsen, Michael/Karyl	4940 Pine Nut Wy	Sacramento	CA	95838
30	Summerfelt Ted/Jean	4944 Pine Nut Way	Sacramento	CA	95838
31	Granados, William	832 North Hill Way	Sacramento	CA	95838
32	Fowler, Kenneth L./Kirsten E.	836 North Hill Way	Sacramento	CA	95838
33	Canlas, Allen S./Avelyn G.	840 North Hill Way	Sacramento	CA	95838
34	Napoletano, Larisa	876 Hunters Creek Dr	Sacramento	CA	95838
35	Young, Terri/Charles	877 Hunters Creek Dr	Sacramento	CA	95838
36	Sieracki, Mark	873 Hunters Creek Dr	Sacramento	CA	95838
37	Netzahualcoyotl, Aaron/Steve	869 Hunters Creek Drive	Sacramento	CA	95838
38	Goodale, Larry	856 Hunters Creek Dr	Sacramento	CA	95838
39	Rodriguez, Daniel/Susan	861 Hunters Creek Dr	Sacramento	CA	95838
40	Ruiz, Kenneth R/Marcella	857 Hunters Creek Drive	Sacramento	CA	95838
41	Tobin, Daniel/Connie	853 Hunters Creek Dr	Sacramento	CA	95838
42	Olszewski, Sandra/Riyad	849 Hunters Creek Drive	Sacramento	CA	95838

EXHIBIT E
MAILING LIST
NORTHSIDE SUBDIVISION MAINTENANCE DISTRICT

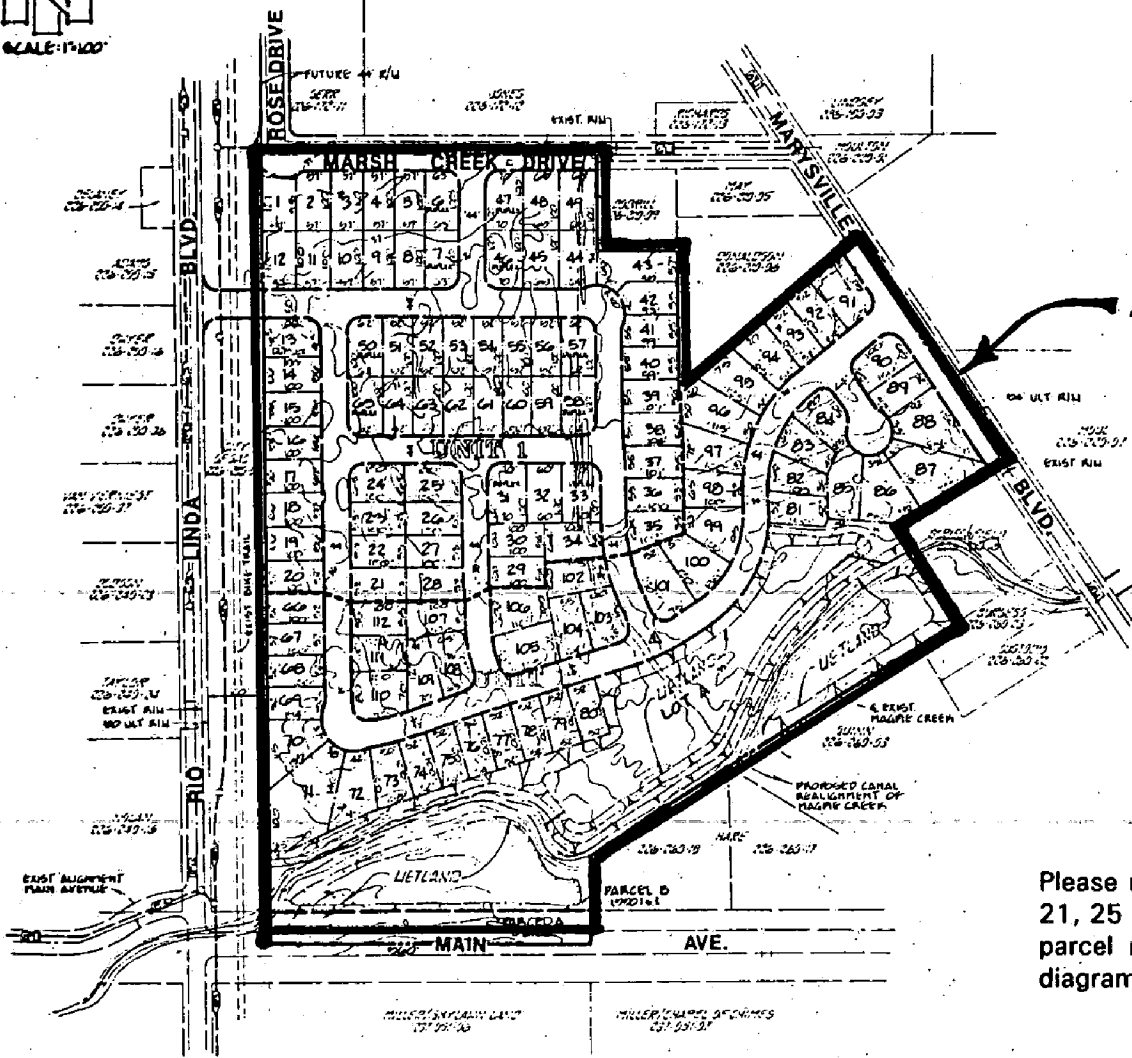
NO.	OWNERS NAME	OWNERS ADDRESS	CITY	ST	ZIP
43	Head, Otis/Nancy	845 Hunters Creek	Sacramento	CA	95838
44	Marcely, Marks	841 Hunters Creek Drive	Sacramento	CA	95838
45	Pack, Garry/Yolanda	837 Hunters Creek Drive	Sacramento	CA	95838
46	Wade, Terry	833 Hunters Creek Drive	Sacramento	CA	95838
47	Rickett, Ernest/Patricia	832 Marsh Creek Dr	Sacramento	CA	95838
48	Sturgeon, David/Karen	836 Marsh Creek Dr	Sacramento	CA	95838
49	Kammerer, Eric	840 Marsh Creek Dr	Sacramento	CA	95838
50	Viray, Pedro/Gilda	844 Hunters Creek Dr	Sacramento	CA	95838
51	Pardillo, Elex/Emilie	844 Hunters Creek Dr	Sacramento	CA	95838
52	Hernandez Family Trust	820 Hunters Creek Dr	Sacramento	CA	95838
53	Dagal, Conrado/Lilia	824 Hunters Creek Dr	Sacramento	CA	95838
54	Sahota, Amrik	828 Hunters Creek Dr	Sacramento	CA	95838
55	Singh, Jitendra/Isnea	832 Hunters Creek Drive	Sacramento	CA	95838
56	Corona, Antonio/Carmen	836 Hunters Creek Drive	Sacramento	CA	95838
57	Lewis, Terry E./Heddy V.	840 Hunters Creek Drive	Sacramento	CA	95838
58	Gilman, Joe	841 North Hill Wy	Sacramento	CA	95838
59	Grandos, William	837 North Hill Wy	Sacramento	CA	95838
60	Mircetich, Jon	833 North Hill Wy	Sacramento	CA	95838
61	McQueen, Felicia	829 North Hill Wy	Sacramento	CA	95838
62	Beckman, Robert/Debra	825 North Hill Wy	Sacramento	CA	95838
63	Alsbury, David/Sall	821 North Hill Wy	Sacramento	CA	95838
64	Bittante, Shirley	817 North Hill Wy	Sacramento	CA	95838
65	Thomas, David/Kil	813 North Hill Wy	Sacramento	CA	95838
66	Elder, Stanley?Ulrike	4935 Wind Creek Dr	Sacramento	CA	95838
67	Padilla, Pasual/Teresa	4931 Wind Creek Dr	Sacramento	CA	95838
68	Umanets, Ralsa	4927 Wind Creek Dr	Sacramento	CA	95838
69	Charan, Michael	1375 So. Magnolia Ave	San Francisco	CA	94080
70	Needles, Mary Teresa	4919 Wind Creek Dr	Sacramento	CA	95838
71	Farnsworth, Michael J	4915 Wind Creek Dr	Sacramento	CA	95838
72	Rice, Eric/Riesa	4911 Wind Creek Dr	Sacramento	CA	95838
73	Spiteri, Charles/Bonny	4907 Wind Creek Dr	Sacramento	CA	95838
74	Corrales, Feliciano/Consuelo	4903 Wind Creek Dr	Sacramento	CA	95838
75	Price, Charles/Glenda	4899 Wind Creek Dr	Sacramento	CA	95838
76	Barrett, Debra	4895 Wind Creek Dr	Sacramento	CA	95838
77	Frank, Ronald/Marci	4891 Wind Creek Dr	Sacramento	CA	95838
78	Seymour, Bert	4887 Wind Creek Dr	Sacramento	CA	95838
79	Walkley	4883 Wind Creek Dr	Sacramento	CA	95838
80	Pulido, Benito	4879 Wind Creek Dr	Sacramento	CA	95838
81	Hard, Sheila	4857 Wind Creek Dr	Sacramento	CA	95838
82	Willsey, Leda	4853 Wind Creek Dr	Sacramento	CA	95838
83	Gains, Marianne	4849 Wind Creek Dr	Sacramento	CA	95838
84	Lara, Jose/Yolanda	4845 Wind Creek Dr	Sacramento	CA	95838

EXHIBIT E
MAILING LIST
NORTHSIDE SUBDIVISION MAINTENANCE DISTRICT

NO.	OWNERS NAME	OWNERS ADDRESS	CITY	ST	ZIP
85	Stanley, Joseph	8 Briar Creek Dr	Sacramento	CA	95838
86	Peterson, Sammy	12 Briar Creek Dr	Sacramento	CA	95838
87	Morrison, John/Stacy	15 Briar Creek Dr	Sacramento	CA	95838
88	Hempstead, Marzetta	13 Briar Creek Dr	Sacramento	CA	95838
89	Walker, Sandra/Yvonne	9 Briar Creek Dr	Sacramento	CA	95838
90	Greatbanks, Keith/Deborah	5 Briar Creek Dr	Sacramento	CA	95838
91	Montoya, Victor	4830 Wind Creek Dr	Sacramento	CA	95838
92	Kaur, Surinder	4834 Wind Creek Dr	Sacramento	CA	95838
93	Bernard, Pamela	4835 Wind Creek Dr	Sacramento	CA	95838
94	Esbri, Mario	4842 Wind Creek Dr	Sacramento	CA	95838
95	Sharma, Asha Joyti	4846 Wind Creek Dr	Sacramento	CA	95838
96	Didovick, Sergey	4850 Wind Creek Dr	Sacramento	CA	95838
97	Saderi, Mohammad	4854 Wind Creek Dr	Sacramento	CA	95838
98	Velasquez, Juan/Norma	4858 Wind Creek Dr	Sacramento	CA	95838
99	Osterhoudt, Thomas/Holly	4862 Wind Creek Dr	Sacramento	CA	95838
100	Nisterchuk, Rolland/Elaine	4866 Wind Creek Dr	Sacramento	CA	95838
101	Zumora, Edwin	4870 Wind Creek Dr	Sacramento	CA	95838
102	Sharma, Arvindra/Asha	880 Hunters Creek Dr	Sacramento	CA	95838
103	Lipton, Michael/Andra	4874 Wind Creek Dr	Sacramento	CA	95838
104	Kumar, Sushila	4878 Wind Creek Dr	Sacramento	CA	95838
105	Gonzales, Joshua	4932 Pine Nut Wy	Sacramento	CA	95838
106	Jones, Ellwood/Caryn	4936 Pine Nut Wy	Sacramento	CA	95838
107	Mortenson, Edith/Robert	4935 Pine Nut Wy	Sacramento	CA	95838
108	Vilimek, Frank/ Maria	4894 Wind Creek Dr	Sacramento	CA	95838
109	Ortiz, Jose/Dora	4898 Wind Creek Dr	Sacramento	CA	95838
110	Lagge, David/Rebecca	4926 Wind Creek Dr	Sacramento	CA	95838
111	Gomez, Gregory	4930 Wind Creek Dr	Sacramento	CA	95838
112	Fischer, Steve	4934 Wind Creek Dr	Sacramento	CA	95838



SCALE: 1" = 100'



DISTRICT BOUNDARY

NORTHSIDE SUBDIVISION MAINTENANCE DISTRICT ASSESSMENT DIAGRAM

Please refer to Sacramento County Assessor's Map Book 226 Pages 21, 25 & 26 for a detailed description of the lines and dimensions and parcel numbers of any parcel within the boundary shown on this diagram.