

7



CITY OF SACRAMENTO

DEPARTMENT OF PUBLIC WORKS

ENGINEERING DIVISION

THOMAS M. FINLEY
Engineering Division Manager

June 17, 1986

CITY MANAGER'S OFFICE
RECEIVED
JUN 11 1986

City Council
Sacramento, California

Honorable Members In Session:

SUBJECT: Sacramento Place - A Condominium (P-84381) - Approval of Final Subdivision Map and Agreement

SUMMARY

Adoption of a resolution approving a Final Subdivision Map and Agreement is requested for Sacramento Place, a condominium, located at the southwest corner of Bell Avenue and Norwood Avenue.

BACKGROUND

On January 2, 1985 the City Council approved a Tentative Subdivision Map by adopting Resolution No. 85-003. The subdivision is a portion of Rio Linda Subdivision No. 8.

All conditions in the staff subdivision report have been met and the Final Subdivision Map is presented for approval.

FINANCIAL

All subdivision costs are being paid by the subdivider, Sacramento Place Associates.

APPROVED
BY THE CITY COUNCIL

JUN 17 1986

AG 85218

OFFICE OF THE
CITY CLERK

City Council
Sacramento Place - A Condominium (P-84381)
June 17, 1986
Page 2

RECOMMENDATION

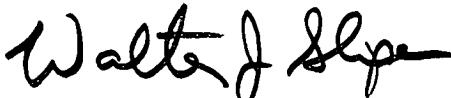
Adoption of the attached resolution approving the Final Subdivision Map and Agreement is recommended.

Respectfully submitted,




THOMAS M. FINLEY
Engineering Division Manager

Recommendation Approved:



WALTER J. SLIPE
City Manager

Approved:



MELVIN H. JOHNSON
Director of Public Works

BF:vr
BF627Ck6
06.0486

June 17, 1986
District No. 2

Attachment

RESOLUTION NO. 85-442

ADOPTED BY THE SACRAMENTO CITY COUNCIL ON DATE OF

**APPROVING FINAL SUBDIVISION MAP AND
AGREEMENT FOR SACRAMENTO PLACE,
A CONDOMINIUM (P-84381)**

WHEREAS, THE COUNCIL OF THE CITY OF SACRAMENTO FINDS AND DETERMINES AS
FOLLOWS:

A. The Final Subdivision Map for Sacramento Place, a condominium,
located at the southwest corner of Bell Avenue and Norwood Avenue
(P-84381) with provisions for its design and improvement, is
consistent with the 1984 North Sacramento Community Plan.

B. The Final Subdivision Map is in substantial compliance with the
previously approved Tentative Subdivision Map.

NOW, THEREFORE, BE IT RESOLVED BY THE COUNCIL OF THE CITY OF
SACRAMENTO AS FOLLOWS:

1. The Final Subdivision Map for Sacramento Place, a
condominium, located at the southwest corner of Bell Avenue and
Norwood Avenue (P-84381) be, and the same is hereby approved
subject to the execution by all parties of the Subdivision
Improvement Agreement for that subdivision.

APPROVED
BY THE CITY COUNCIL

JUN 17 1986

OFFICE OF THE
CITY CLERK

2. All offers of dedication shown on said map are hereby accepted, subject to the improvement thereof required by the Subdivision Agreement.

3. The City Manager and City Clerk be authorized and directed to execute on behalf of the City of Sacramento that certain Subdivision Improvement Agreement and Abstract thereof between the City and Sacramento Place Associates to provide for the subdivision improvements required by the Subdivision Map Act and Chapter 40 (Subdivision Regulations) of the Sacramento City Code.

4. The Real Estate Supervisor is authorized and directed to record the Abstract of the above-mentioned Agreement in the official records of Sacramento County.

MAYOR

ATTEST:

CITY CLERK

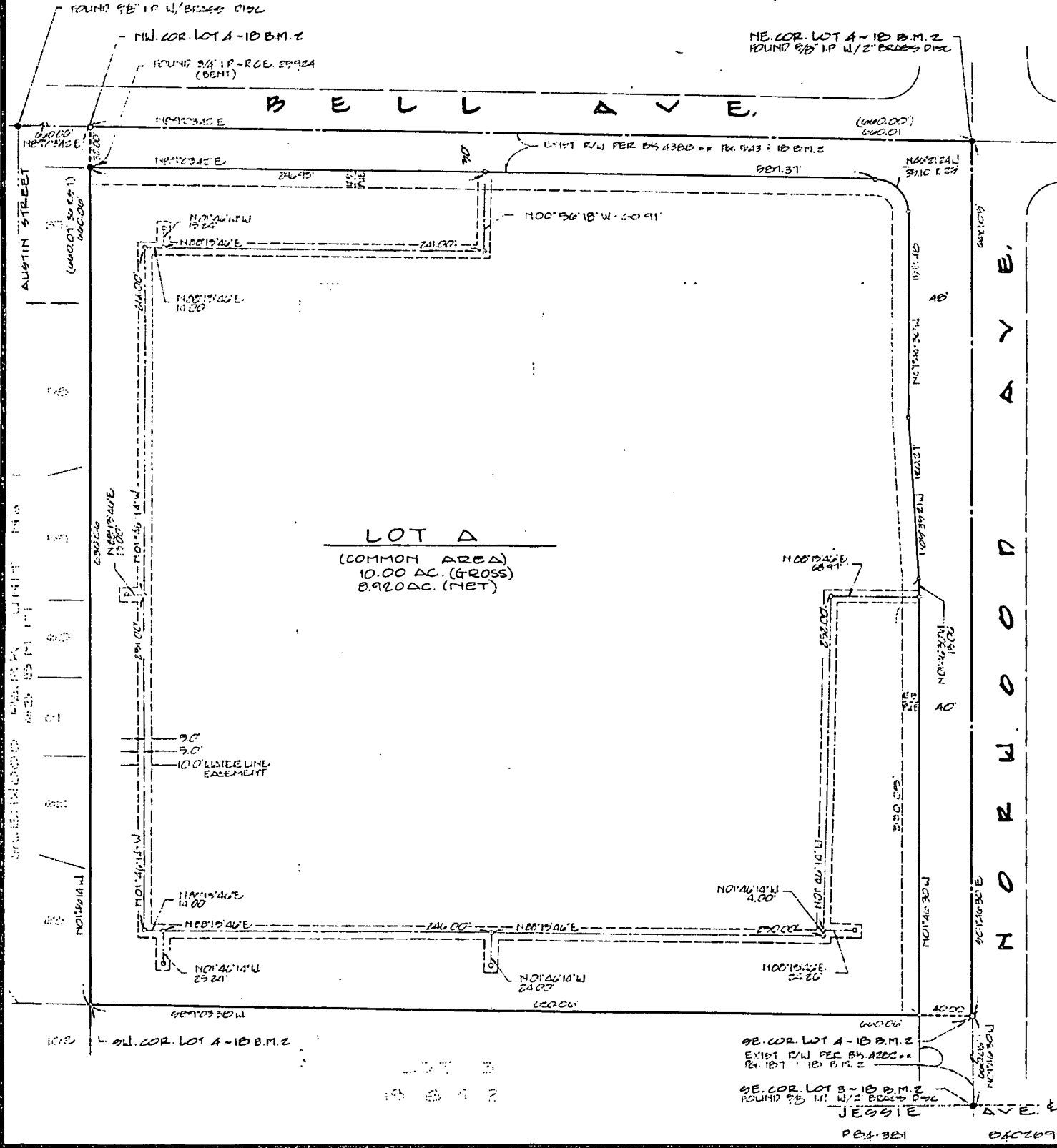
BF627Ck6

JOB LINE

- 2. A SOILS REPORT FOR THIS SUBDIVISION WAS PREPARED BY EARTHTEC ON JANUARY 14, 1985 (84-702). A COPY OF THIS REPORT IS AVAILABLE FOR PUBLIC INSPECTION AT THE CITY OF SACRAMENTO BUILDING DEPARTMENT
- 3. ENERGY STANDARDS PER CALIFORNIA ADMINISTRATIVE CODE TITLE 23, EFFECTIVE JULY 13, 1982, APPLY TO THIS LOT.

LEGEND

- ——— DIMENSION POINT
- ——— MONUMENT FOUND & SHOWN HEREON
- (○) ——— RECORD PER 10 B.M. 2, UNLESS OTHERWISE SHOWN
- ◊ ——— SET P K NAIL 1 1/2" LONG IN STREET CENTERLINE



July 2, 1986

Max C. Woo
P. O. Box 1426
San Mateo, CA 94401

Dear Mr. Woo:

On June 17, 1986, the Sacramento City Council adopted a Resolution No. 86-442 authorizing the execution of Agreement No. 85218 for subdivision improvements for Sacramento Place, located at the southwest corner of Bell and Norwood.

Enclosed, for your records, is one fully certified copy of said agreement and authorizing resolution.

Sincerely,

LORRAINE MAGANA, CITY CLERK



Anne J. Mason
Deputy City Clerk

AJM/dah/7
Enclosure

cc: Public Works
Risk Management