

5A



CITY OF SACRAMENTO

DEPARTMENT OF ENGINEERING

915 I STREET SACRAMENTO, CALIFORNIA 95814
CITY HALL ROOM 207 TELEPHONE (916) 449-5281

CITY MANAGER'S OFFICE
RECEIVED
SEP 26 1983

J. F. VAROZZA
CITY ENGINEER

M. H. JOHNSON
ASSISTANT CITY ENGINEER

September 22, 1983

APPROVED
BY THE CITY COUNCIL

OCT 4 1983

OFFICE OF THE
CITY CLERK

City Council
Sacramento, California

Honorable Members in Session:

SUBJECT: Abandonment Proceeding No. 5346, Abandonment of Set Back Easements on South Side of Calvine Road at Songbird Court

SUMMARY:

Adoption of the Resolution of Intention to abandon set back easements on the south side of Calvine Road at Songbird Court.

BACKGROUND:

A request has been received from the property owners of the corner lots on the south side of Calvine Road at Songbird Court to abandon the south 12.5 feet of the set back easements on Calvine Road for the two corner lots.

The various utility companies, SMUD, PG&E and Citizens Utility Company have each submitted letters to the City stating they have no objection to the abandonment. The City Traffic Engineer has also reviewed the proposed abandonment and has no objection.

FINANCIAL:

No City funds are to be expended for this abandonment.

RECOMMENDATION:

It is recommended that the Resolution of Intention be adopted, setting a hearing date for October 25, 1983.

Respectfully submitted,

Recommendation Approved:

Walter J. Slipe
Walter J. Slipe City Manager

J. F. Varozza
J. F. VAROZZA
Director of Public Works

October 4, 1983
District No. 7

RESOLUTION NO. 83-761 5A

ADOPTED BY THE SACRAMENTO CITY COUNCIL ON DATE OF

RESOLUTION OF INTENTION TO VACATE SET BACK EASEMENTS
ON SOUTH SIDE OF CALVINE ROAD AT SONGBIRD COURT, FOR
ABANDONMENT PROCEEDING NO. 5346

APPROVED
BY THE CITY COUNCIL

OCT 4 1983

OFFICE OF THE
CITY CLERK

BE IT RESOLVED BY THE COUNCIL OF THE CITY OF SACRAMENTO:

1. Pursuant to the standards and procedures provided in the Public Streets, Highways, Service Easements Vacation Law, California Streets and Highways Code § 8300 et seq., the City Council hereby declares its intention to abandon and vacate a public easement located in the City of Sacramento, County of Sacramento, State of California, to wit:

All that portion of the set back easement of Lots 4 and 12 as shown on the official plat of Summerfield Unit No. 2 recorded in the office of the Recorder of Sacramento County, California in Book 124 of Maps, Page 22 described as follows:

The south 12.5 feet of 25 feet set back lying adjacent to the south line of Calvine Road excepting therefrom the west 25 feet of said set back line in Lot 4 and the east 25 feet of said set back line in Lot 12.

All proceedings in connection with the aforesaid abandonment are to be taken subject to such reservations and exceptions. (A map or plan of the proposed abandonment is on file in the office of the Director of Public Works).

2. The City Council will consider this proposed abandonment at a public hearing at the hour of 7:30 o'clock p.m. on October 25, 1983 in the Council Chambers of the City Council of the City of Sacramento, in the City Hall on I Street between 9th and 10th Streets in said City.

3. The City Clerk is directed to publish Notice of Hearing of the proposed vacation of said set back easements in the Daily Recorder, a newspaper published five (5) days a week, as required by law, and that said Notice be posted along those portions of the easements to be vacated in accordance with the provisions of Sections 8322 and 8323 of the Streets and Highways Code of the State of California.

MAYOR

ATTEST:

CITY CLERK

TO ALL APPLICANTS FOR ABANDONMENT OF
EASEMENTS OR SET BACK LINES:


You are hereby notified that any action which the City of Sacramento may take in abandoning the easements or set back lines specified in your application will affect only the interests of the City in such easement or set back line. If your property is also subject to private deed restrictions granting reciprocal easements or other rights to the property owners in your subdivision, the abandonment by the City of the requested easement or set back line will have no effect upon such private restrictions. You may desire to consult legal counsel or a title insurance company as to the existence of private easements or deed restrictions on your property.

J. F. VAROZZA
CITY ENGINEER

I read the foregoing statement on

March 29, 19 83

PACIFIC SCENE, INC.

BY: 

Applicant
Kirk Bone, Vice President



Pacific
Scene of
Sacramento

5A

March 29, 1983

Mr. Tom Miller
City Planning Department
927 10th Street
Sacramento, California 95814

Re: Abandonment of Easement - Lots 4 and 12, Summerfield 2

Dear Mr. Miller:

We hereby request that the City of Sacramento abandon 12-1/2 feet of the existing set back along Lots 4 and 12 of Summerfield Unit No. 2 (124 B.M. 22) to accommodate the proposed models to be located on the lots. Enclosed is a plat for your review and approval.

I have reviewed the CC&Rs and find no restrictions for this action. The County Health Department, City Traffic Department and City Engineering Department have no objection to this action.

If you have any questions or need further information, please call Ted Colbert at 929-3323.

Thank you for your cooperation in this matter.

Sincerely,

Kirk Bone
Vice President

KB/jt

CITIZENS



UTILITIES

5A

DISTRICT OFFICE
9261 Stockton Blvd.
Elk Grove, California

MAILING ADDRESS
Drawer 340
Elk Grove, CA 95624

COMPANY
OF CALIFORNIA

RESIDENCE SERVICE
(916) 685-9511

BUSINESS SERVICE
(916) 685-3993

DISTRICT OFFICE
(916) 685-7007

June 21, 1983

Brian Moore
Raymond Vail & Associates
1410 Ethan Way
Sacramento, CA 95825

Dear Mr. Moore,

In reply to your letter of June 2, 1983; Citizens Utilities Company of California does not have any telephone facilities within the setback area that you propose to reduce from 25' to 12.5' along the south side of Calvin Road at Songbird Court. This area is within the boundaries of lots number 4 and 12 of Summerfield #2.

Our company has no objection to the reduction of the setback line for these lots.

Very truly yours,

John Mussina
District Outside Plant Engineer

JM:nd

5A

PACIFIC GAS AND ELECTRIC COMPANY

PG&E + 5555 FLORIN-PERKINS ROAD • P. O. BOX 7444 • SACRAMENTO, CALIFORNIA 95826

June 7, 1983

Summerfield Unit No. 2
640 83-37A

Mr. Brian Moore
Raymond Vail and Associates
1410 Ethan Way
Sacramento, CA 95825

Dear Mr. Moore:

We have no objection to your request to reduce the existing sideyard set-back along Calvine Road from 25.0 feet to 12.5 feet in Lots 4 and 12 of Summerfield Unit No. 2 Subdivision.

Enclosed is a letter addressed to the City Council of Sacramento which you may use in your petition for abandonment. Please be advised, however, that we have gas facilities within the remaining 12.5 foot set-back.

If you expect any work to be performed in this area, we suggest the contractor notify the Underground Service Alert (U.S.A.) telephone (800) 642-2444.

Sincerely,

M. R. Amerio
Manager, General Services

By Keith J. Lamb
Keith J. Lamb
Division Land Supervisor

Enclosure

5A

PACIFIC GAS AND ELECTRIC COMPANY

PG&E + 5555 FLORIN-PERKINS ROAD • P. O. BOX 7444 • SACRAMENTO, CALIFORNIA 95826

June 7, 1983

Summerfield Unit No. 2
83-37A
640

City Council
City of Sacramento
City Hall
915 I Street
Sacramento, CA 95814

Gentlemen:

You have before you a petition to reduce the existing sideyard set-back along Calvine Road from 25.0 feet to 12.5 feet on Lots 4 and 12 of the Summerfield Unit No. 2 Subdivision.

This Company has no facilities within the portion of the set-back proposed for abandonment, nor any use foreseen. We, therefore, have no objection to the set-back reduction as proposed.

Sincerely,

M. R. Amerio
Manager, General Services

By Keith J. Lamb
Keith J. Lamb
Division Land Supervisor



SMUD

SACRAMENTO MUNICIPAL UTILITY DISTRICT 6201 S Street, Box 15830, Sacramento, California 95813; (916) 452-3211

5A

June 8, 1983

Mr. Brian Moore
Raymond Vail & Associates
1410 Ethan Way
Sacramento, CA 95825

SUBJECT: SUMMERFIELD NO. 2

SMUD has no existing facilities in the setback area on Lots 4 and 12 in Summerfield No. 2 being abandoned. SMUD has no plans to require this area in the future.

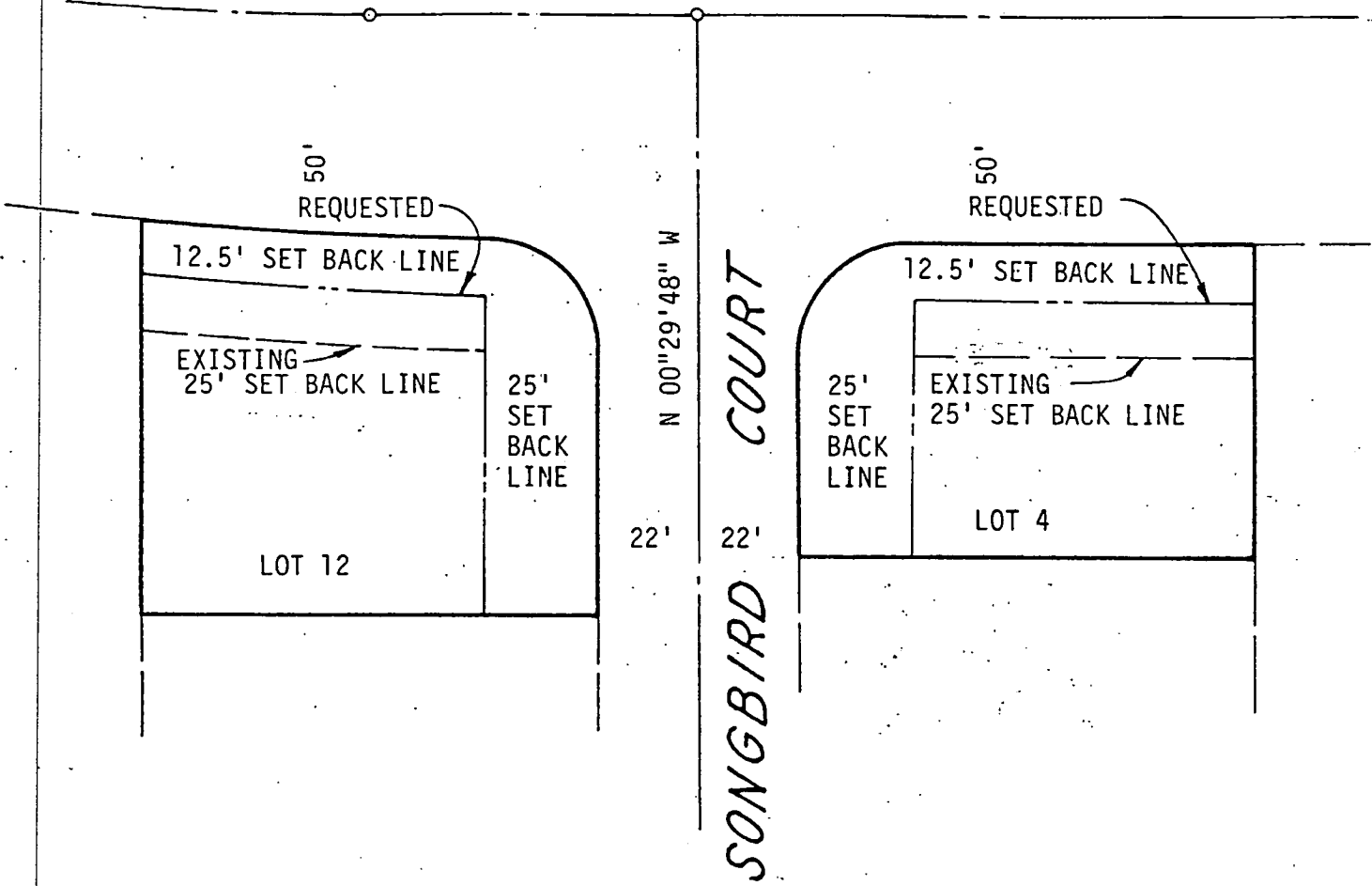
Leland G. Meyer
Senior Engineering Estimator
Distribution Planning Department

/gb

5A

CALVINE ROAD

N 89°30'12" E



PLAT TO ACCOMPANY REQUEST FOR
 ABANDONMENT OF SET BACK LINE

LOTS 4 & 12 OF SUMMERFIELD UNIT NO. 2
 (124 B.M. 22)

CITY OF SACRAMENTO
 Scale 1"=40'

CALIFORNIA
 March, 1983

WO 2160.02

5B



CITY OF SACRAMENTO

CITY MANAGER'S OFFICE
RECEIVED
SEP 26 1983

DEPARTMENT OF ENGINEERING
915 I STREET SACRAMENTO, CALIFORNIA 95814
CITY HALL ROOM 207 TELEPHONE (916) 449-5281

J. F. VAROZZA
CITY ENGINEER
M. H. JOHNSON
ASSISTANT CITY ENGINEER

September 26, 1983

City Council
Sacramento, California

APPROVED
BY THE CITY COUNCIL

Honorable Members in Session:

OCT 4 1983

SUBJECT: Resolution Approving Negative Declaration for Abandonment of Excess
Set Back Easements on South Side of Calvine Road - Corner Lots at
Songbird Court

OFFICE OF THE
CITY CLERK

SUMMARY:

The Environmental Coordinator has reviewed the subject project and finds that it will not have a significant adverse effect on the physical environment and therefore recommends that the project and a Negative Declaration be approved by the City Council.

BACKGROUND:

In accordance with State EIR Guidelines for Implementation of the California Environmental Quality Act of 1970, dated April 1981, an Initial Study was performed. As a result of this study, it was determined that the subject project would not have a significant adverse effect on the physical environment and a draft Negative Declaration was prepared. On September 8, 1983 the Negative Declaration was filed with the County Clerk. On September 15, 1983 Notice of Opportunity for Public Review of the draft Negative Declaration was published in The Sacramento Union. The appropriate length of time has elapsed for receipt of comments regarding the Negative Declaration, with no comments having been received.

RECOMMENDATION:

The Environmental Coordinator recommends that the attached resolution be passed which will:

1. Determine that the proposed project will not have a significant effect on the environment.
2. Approve the Negative Declaration.

- 3. Approve the project.
- 4. Authorize the Environmental Coordinator to file a Notice of Determination with the County Clerk.

Respectfully submitted,

J. F. Varozza
 J. F. VAROZZA
 Director of Public Works

Recommendation Approved:

Walter J. Slipe
 Walter J. Slipe, City Manager

14-E-040-15-0

Received of the [illegible] the sum of [illegible]

[illegible handwritten text]

[illegible handwritten text]

RESOLUTION NO. 83-762 5B

ADOPTED BY THE SACRAMENTO CITY COUNCIL ON DATE OF

October 4, 1983

APPROVED
BY THE CITY COUNCIL

OCT 4 1983

OFFICE OF THE
CITY CLERK

RESOLUTION APPROVING NEGATIVE DECLARATION FOR
ABANDONMENT OF EXCESS SET BACK EASEMENTS ON
SOUTH SIDE OF CALVINE ROAD - CORNER LOTS AT
SONGBIRD COURT

WHEREAS, September 8, 1983 J. F. Varozza, the Environmental Coordinator of the City of Sacramento, filed a Negative Declaration with the County Clerk of Sacramento County for the following proposed City initiated project:

Abandonment of Excess Set Back Easements
on South Side of Calvine Road - Corner Lots
at Songbird Court

WHEREAS, the prescribed time for receiving appeals has elapsed and no appeals were received,

NOW THEREFORE, BE IT RESOLVED BY THE COUNTY OF THE CITY OF SACRAMENTO:

1. That the proposed project, Abandonment of Excess Set Back Easements on South Side of Calvine Road - Corner Lots at Songbird Court will not have a significant effect on the environment.
2. That the Negative Declaration for the above-described project is hereby approved.
3. That the above-described project is hereby approved for the purpose of abandonment.
4. That the Environmental Coordinator is authorized to file with the County Clerk a Notice of Determination for said project.

MAYOR

ATTEST:

CITY CLERK

NEGATIVE DECLARATION

Pursuant to Division 6, Title 14, Chapter 3, Article 7, Section 15083 of the California Administrative Code and pursuant to the Procedures and Guidelines for preparation and processing of Environmental Impact Reports (Resolution 78-172) adopted by the City of Sacramento, pursuant to Sacramento City Code Chapter 63, the Environmental Coordinator of the City of Sacramento, California, a municipal corporation, does prepare, make, declare, publish, and cause to be filed with the County Clerk of Sacramento County, State of California this Negative Declaration regarding the project described as follows:

- 1. Title and Short Description of Project:

ABANDONMENT OF EXCESS SET BACK EASEMENTS - SOUTH SIDE OF CALVINE ROAD - CORNER LOTS AT SONGBIRD COURT.

ENDORSED

- 2. Location of Project:

SOUTH SIDE OF CALVINE ROAD AT SONGBIRD COURT

SEP 8 - 1983

JOYCE RUSSELL SMITH, CLERK
By S. MORITA, Deputy

- 3. The Proponent of the Project: City of Sacramento

- 4. It is found that the project will not have a significant effect on the environment. A copy of the initial study is attached, which documents the reasons supporting the above finding and any mitigation measures included in the project to avoid any potentially significant effects identified in the initial study.

- 5. The Initial Study was Prepared by GARRETT D. CRISPELL

- 6. A copy of the Initial Study and this Negative Declaration may be obtained at 915 - I Street, Room 207, Sacramento, California 95814.

DATED: SEPTEMBER 7, 1983

Environmental Coordinator of the City of Sacramento, California, a municipal corporation

By J. F. Varozza
J. F. VAROZZA, City Engineer

CITY OF SACRAMENTO

INITIAL STUDY

References are to California Administrative Code, Title 14, Division 6, Chapter 3, Article 7, Section 15080.

1. Title and Description of Project (15080(c)(1))

ABANDONMENT OF EXCESS SET BACK EASEMENTS - SOUTH SIDE OF
CALVINE ROAD - THE CORNER LOTS AT SONGBIRD COURT.

2. Environmental Setting (15080(c)(2))

THE PROJECT IS LOCATED IN A SINGLE FAMILY RESIDENTIAL (R-1)
ZONE.

3. Environmental Effects - Attached checklist must be completed by person conducting initial study (15080(c)(3)).

4. Mitigation Measures - Attached list of mitigation measures must be completed by person conducting initial study (15080(c)(4)).

5. Compatibility with Existing Zoning and Plans (15080(c)(5))

PROJECT IS COMPATIBLE WITH THE ZONING ORDINANCE AND GENERAL PLAN OF
THE CITY OF SACRAMENTO.

Date SEPTEMBER 7, 1983

Lanett D. Cispell
(Signature)

Title ADMINISTRATIVE ASSISTANT

CITY OF SACRAMENTO
INITIAL STUDY
ENVIRONMENTAL CHECKLIST FORM

C.C. No. _____

Date: SEPT. 7, 1983

I. BACKGROUND

1. Name of Project ABANDONMENT OF EXCESS SET BACK EASEMENTS - SOUTH SIDE OF CALVINE ROAD - THE CORNER LOTS AT SONGBIRD COURT
2. City Department Initiating Project PUBLIC WORKS
3. Name of Individual Preparing Checklist GARRETT D. CRISPALL
4. Is Checklist Being Prepared for CEQA X or NEPA ?
5. Source of Funding of Project NONE

II. ENVIRONMENTAL IMPACTS

(Explanations of all "yes" and "maybe" answers are required under Item III.)

	<u>Yes</u>	<u>Maybe</u>	<u>No</u>
1. <u>Earth</u> . Will the proposal result in:			
a. Unstable earth conditions or in changes in geologic substructures?	—	—	<u>X</u>
b. Disruptions, displacements, compaction or overcovering of the soil?	—	—	<u>X</u>
c. Change in topography or ground surface relief features?	—	—	<u>X</u>
d. The destruction, covering or modification of any unique geologic or physical features?	—	—	<u>X</u>
e. Any increase in wind or water erosion of soils, either on or off the site?	—	—	<u>X</u>
f. Changes in deposition or erosion of beach sands, or changes in siltation, deposition or erosion which may modify the channel of a river or stream or the bed of the ocean or any bay, inlet or lake?	—	—	<u>X</u>
g. Exposure of people or property to geologic hazards such as earthquakes, landslides, mudslides, ground failure, or similar hazards?	—	—	<u>X</u>
2. <u>Air</u> . Will the proposal result in:			
a. Substantial air emissions or deterioration of ambient air quality?	—	—	<u>X</u>
b. The creation of objectionable odors?	—	—	<u>X</u>
c. Alteration of air movement, moisture or temperature, or any change in climate, either locally or regionally?	—	—	<u>X</u>
3. <u>Water</u> . Will the proposal result in:			
a. Changes in currents, or the course or direction of water movements, in either marine or fresh waters?	—	—	<u>X</u>
b. Changes in absorption rates, drainage patterns, or the rate and amount of surface water runoff?	—	—	<u>X</u>
c. Alterations to the course or flow of flood waters?	—	—	<u>X</u>
d. Change in the amount of surface water in any water body?	—	—	<u>X</u>
e. Discharge into surface waters, or in any alteration of surface water quality, including but not limited to temperature, dissolved oxygen or turbidity?	—	—	<u>X</u>
f. Alteration of the direction or rate of flow of ground waters.	—	—	<u>X</u>
g. Change in the quantity of ground waters, either through direct additions or withdrawals, or through interception of an aquifer by cuts or excavations?	—	—	<u>X</u>
h. Substantial reduction in the amount of water otherwise available for public water supplies?	—	—	<u>X</u>

- | | | | | |
|-----|---|---|---|---|
| 1. | Exposure of people or property to water related hazards such as flooding or tidal wave? | — | — | X |
| 4. | <u>Plant Life.</u> Will the proposal result in: | | | |
| a. | Change in the diversity of species, or number of any species of plants (including trees, shrubs, grass, crops, microflora and aquatic plants)? | — | — | X |
| b. | Reduction of the numbers of any unique, rare or endangered species of plants? | — | — | X |
| c. | Introduction of new species of plants into an area, or in a barrier to the normal replenishment of existing species? | — | — | X |
| d. | Reduction in acreage of any agricultural crop? | — | — | X |
| 5. | <u>Animal Life.</u> Will the proposal result in: | | | |
| a. | Change in the diversity of species, or numbers of any species of animals (birds, land animals including reptiles, fish and shellfish, benthic organisms, insects or microfauna)? | — | — | X |
| b. | Reduction of the numbers of any unique, rare or endangered species of animals? | — | — | X |
| c. | Introduction of new species of animals into an area, or result in a barrier to the migration or movement of animals? | — | — | X |
| d. | Deterioration to existing fish or wildlife habitat? | — | — | X |
| 6. | <u>Noise.</u> Will the proposal result in: | | | |
| a. | Increase in existing noise levels? | — | — | X |
| b. | Exposure of people to severe noise levels? | — | — | X |
| 7. | <u>Light and Glare.</u> Will the proposal produce new light or glare? | — | — | X |
| 8. | <u>Land Use.</u> Will the proposal result in a substantial alteration of the present or planned use of an area? | — | — | X |
| 9. | <u>Natural Resources.</u> Will the proposal result in: | | | |
| a. | Increase in the rate of use of any natural resources? | — | — | X |
| b. | Substantial depletion of any nonrenewable natural resource? | — | — | X |
| 10. | <u>Risk of Upset.</u> Does the proposal involve a risk of an explosion or the release of hazardous substances (including, but not limited to, oil, pesticides, chemicals or radiation) in the event of an accident or upset conditions? | — | — | X |
| 11. | <u>Population.</u> Will the proposal alter the location, distribution, density, or growth rate of the human population of an area? | — | — | X |
| 12. | <u>Housing.</u> Will the proposal affect existing housing, or create a demand for additional housing? | — | — | X |
| 13. | <u>Transportation/Circulation.</u> Will the proposal result in: | | | |
| a. | Generation of substantial additional vehicular movement? | — | — | X |
| b. | Effects on existing parking facilities, or demand for new parking? | — | — | X |
| c. | Substantial impact upon existing transportation systems? | — | — | X |
| d. | Alterations to present patterns of circulation or movement of people and/or goods? | — | — | X |
| e. | Alterations to waterborne, rail or air traffic? | — | — | X |
| f. | Increase in traffic hazards to motor vehicles, bicyclists or pedestrians? | — | — | X |
| 14. | <u>Public Services.</u> Will the proposal have an effect upon, or result in a need for new or altered governmental services in any of the following areas: | | | |
| a. | Fire protection? | — | — | X |
| b. | Police protection? | — | — | X |
| c. | Schools? | — | — | X |

- | | | | |
|--|---|---|---|
| d. Parks or other recreational facilities? | — | — | X |
| e. Maintenance of public facilities, including roads? | — | — | X |
| f. Other governmental services? | — | — | X |
| 15. <u>Energy</u> . Will the proposal result in: | | | |
| a. Use of substantial amounts of fuel or energy? | — | — | X |
| b. Substantial increase in demand upon existing sources of energy, or require the development of new sources of energy? | — | — | X |
| 16. <u>Utilities</u> . Will the proposal result in a need for new systems, or substantial alterations to the following utilities: | | | |
| a. Power or natural gas? | — | — | X |
| b. Communications systems? | — | — | X |
| c. Water? | — | — | X |
| d. Sewer or septic tanks? | — | — | X |
| e. Storm water drainage? | — | — | X |
| f. Solid waste and disposal? | — | — | X |
| 17. <u>Human Health</u> . Will the proposal result in: | | | |
| a. Creation of any health hazard or potential health hazard (excluding mental health)? | — | — | X |
| b. Exposure of people to potential health hazards? | — | — | X |
| 18. <u>Aesthetics</u> . Will the proposal result in the obstruction of any scenic vista or view open to the public, or will the proposal result in the creation of an aesthetically offensive site open to public view? | — | — | X |
| 19. <u>Recreation</u> . Will the proposal result in an impact upon the quality or quantity of existing recreational opportunities? | — | — | X |
| 20. <u>Archeological/Historical</u> . Will the proposal result in an alteration of a significant archeological or historical site, structure, object or building? | — | — | X |
| 21. <u>Mandatory Findings of Significance</u> . | | | |
| a. Does the project have the potential to degrade the quality of the environment, substantially reduce the habitat of a fish or wildlife species, cause a fish or wildlife population to drop below self sustaining levels, threaten to eliminate a plant or animal community, reduce the number or restrict the range of a rare or endangered plant or animal or eliminate important examples of the major periods of California history or prehistory? | — | — | X |
| b. Does the project have the potential to achieve short-term, to the disadvantage of long-term, environmental goals? (A short-term impact on the environment is one which occurs in a relatively brief, definitive period of time while long-term impacts will endure well into the future.) | — | — | X |
| c. Does the project have impacts which are individually limited, but cumulatively considerable? (A project may impact on two or more separate resources where the impact on each resource is relatively small, but where the effect of the total of those impacts on the environment is significant.) | — | — | X |
| d. Does the project have environmental effects which will cause substantial adverse effects on human beings, either directly or indirectly? | — | — | X |

111. DISCUSSION OF ENVIRONMENTAL EVALUATION (any "yes" or "maybe" answers must be explained - attached additional sheets if necessary)

Lined area for discussion of environmental evaluation.

IV. Mitigation measures proposed to minimize environmental impacts for the project as identified above. (Explain in detail - if none, so state)

Lined area for mitigation measures proposed to minimize environmental impacts.



- V. Alternatives to the project which would produce less of an adverse impact on the environment (lower density, less intense land use, move building on site, no project, et cetera)

NO PROJECT - FAILURE TO ABANDON THE EXCESS SET BACK EASEMENTS
WOULD PREVENT THE ACCOMPLISHMENT OF THE PLANNED DEVELOPMENT,
WHICH FACE ON SONGBIRD COURT. THUS, THE ABANDONMENT IS FOR THE
SIDE YARD SET BACK.

VI. DETERMINATION

On the basis of this initial study:

- I find the proposed project COULD NOT have a significant effect on the environment, and a NEGATIVE DECLARATION will be prepared.
- I find that although the proposed project could have a significant effect on the environment, there will not be a significant effect in this case because the mitigation measures described in IV above have been added to the project or the possibility of a significant effect on the environment is so remote as to be insignificant.
- I find the proposed project MAY have a significant effect on the environment, and an ENVIRONMENTAL IMPACT REPORT IS REQUIRED.

Date SEPTEMBER 7, 1983

Janett D. Kuyell
(Signature)
Title ADMINISTRATIVE ASSISTANT