



2.12

DEPARTMENT OF  
PUBLIC WORKS  
  
ENGINEERING DIVISION

CITY OF SACRAMENTO  
CALIFORNIA

927 TENTH STREET  
ROOM 200  
SACRAMENTO, CA  
95814-2705

916-449-8220  
FAX 916-449-8678

CONSTRUCTION SECTION  
640 BERKUT DRIVE  
SUITE B  
SACRAMENTO, CA  
95814-0131

916-449-5282

October 15, 1991

APPROVED  
BY THE CITY COUNCIL

OCT 15 1991

OFFICE OF THE  
CITY CLERK

City Council  
Sacramento, California

Honorable Members In Session:

**SUBJECT: APPROVAL OF FINAL SUBDIVISION MAP FOR GINGHAM PLACE - (P-89297)**

**LOCATION/COUNCIL DISTRICT**

Santa Ana Avenue at Ginghamton Way  
Council District #2

**SUMMARY**

Adoption of a resolution approving a Final Subdivision Map for Gingham Place, located at Santa Ana Avenue at Ginghamton Way, is recommended.

**COMMITTEE/COMMISSION ACTION**

None.

**STAFF RECOMMENDATION**

It is recommended that the attached resolution approving the Final Subdivision Map be adopted.

**BACKGROUND**

On December 12, 1989, the City Council approved a Tentative Subdivision Map by adopting Resolution No. 89-944.

All conditions in the staff subdivision report have been met and the Final Subdivision Map is presented for approval.

**FINANCIAL CONSIDERATIONS**

All subdivision costs are being paid by the subdivider, James L. Kouretas.

**POLICY CONSIDERATIONS**

Pursuant to Sacramento City Code, Article V, Chapter 40.515, and Government Code Section 66458, the City Council may, by resolution, approve final maps and parcel maps. The map presented conforms to all the requirements of the Government Code and Chapter 40 of the City Code, applicable at the time of conditional approval of the Tentative Map. The Final Map is, therefore, recommended for approval.

**MBE/WBE EFFORTS**


None, since no goods or services are being procured with this action.

Respectfully Submitted:



THOMAS M. FINLEY  
Engineering Division Manager

RECOMMENDATION APPROVED:



WALTER J. SLIPE  
City Manager

APPROVED:



MELVIN H. JOHNSON  
Director of Public Works

**CONTACT PERSON**

Robert R. Jones, Senior Engineer  
449-8210

SDP:dc  
DS2-18.B  
09.3091.2

Attachment

**FOR COUNCIL MEETING OF:**

October 15, 1991

1870  
1871  
1872  
1873  
1874

1875  
1876  
1877  
1878  
1879  
1880

1881  
1882  
1883  
1884  
1885

91-  
**RESOLUTION NO. 813**

ADOPTED BY THE SACRAMENTO CITY COUNCIL

ON DATE OF \_\_\_\_\_

**APPROVED**  
BY THE CITY COUNCIL

OCT 15 1991

OFFICE OF THE  
CITY CLERK

APPROVING FINAL SUBDIVISION MAP FOR  
GINGHAM PLACE (P-89297)

WHEREAS, THE COUNCIL OF THE CITY OF SACRAMENTO FINDS AND DETERMINES AS FOLLOWS:

- A. The Final Subdivision Map for Gingham Place, located at Santa Ana Avenue at Ginghamton Way, with provisions for its design and improvement, is consistent with the City General Plan and North Sacramento Community Plan.
- B. The Final Subdivision Map is in substantial compliance with the previously approved tentative map.

NOW, THEREFORE, BE IT RESOLVED BY THE COUNCIL OF THE CITY OF SACRAMENTO AS FOLLOWS:

- 1. The Final Subdivision Map for this project is hereby approved.
- 2. All offers of dedication shown on said map are hereby accepted.

ATTEST:

\_\_\_\_\_  
MAYOR

\_\_\_\_\_  
CITY CLERK

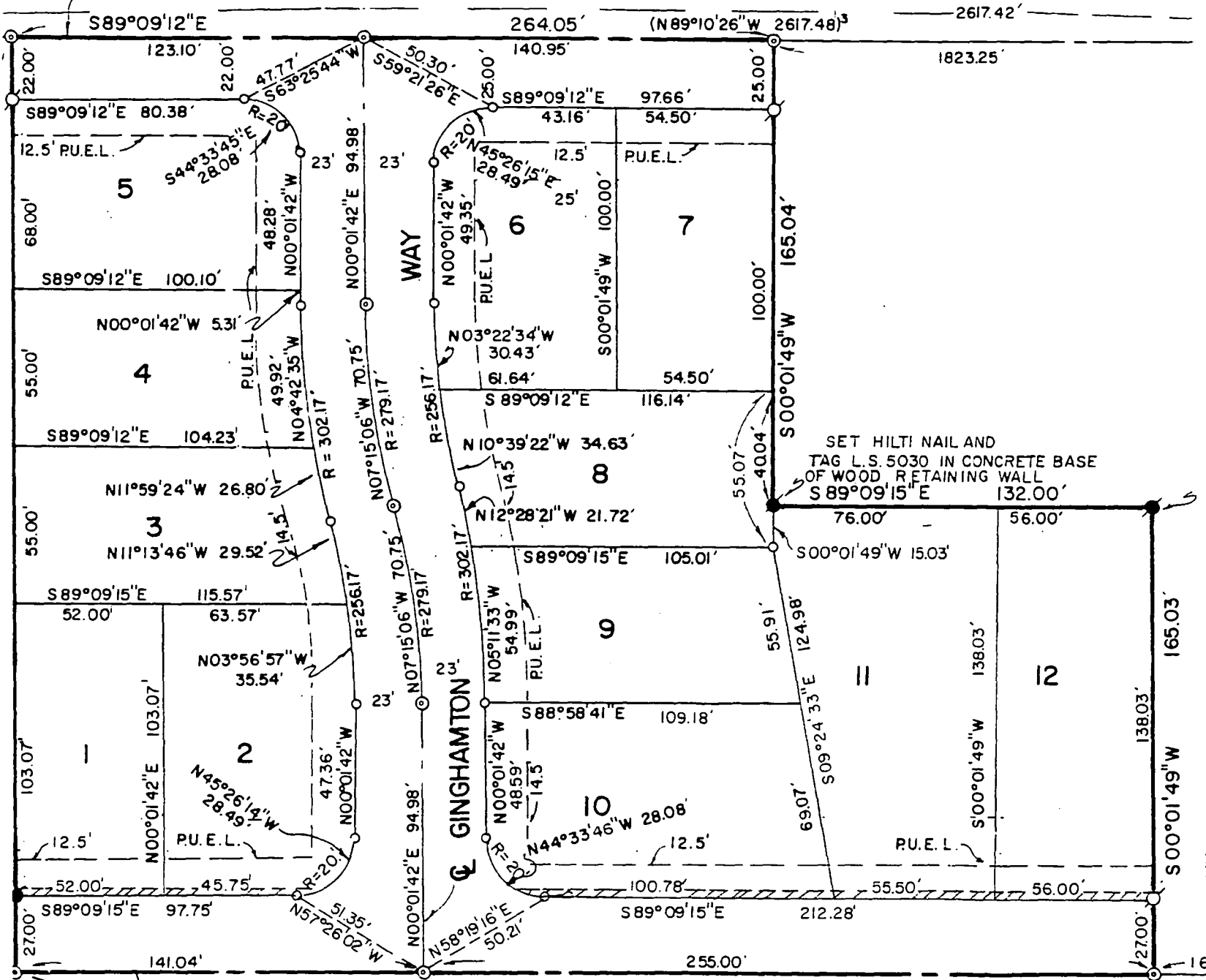
DS2-18.B  
09.2791.1

**FOR CITY CLERK USE ONLY**

RESOLUTION NO.: \_\_\_\_\_

DATE ADOPTED: \_\_\_\_\_

EXCHANGE STREET



N89°09'15"W

SANTA ANA AVENUE  
(FORMERLY CENTRAL AVENUE)

N89°09'15"W

396.04'

(N89°00'54"E)<sup>5</sup>  
(N89°10'36"W 2617.48')<sup>3</sup>

2617.37'

(2617.64)<sup>4</sup>

2617.42'

1823.25'

127.00'

138.03'

138.03'

165.04'

25.00'

2617.42'