

WATER+ PROGRAM

TREATMENT PLANTS RESILIENCY AND IMPROVEMENTS PROJECT

Preservation Commission – February 18, 2026

Presenter: Megan Thomas, PE – Project Manager

Agenda

- ✓ Project Review
 - ✓ Water+ Background
 - ✓ SRWTP Historical Significance
 - ✓ Space Limitations
 - ✓ Project Impacted Resources
- ✓ Request Recommendation

Water+ Background

Need: Long Term, Reliable and Safe Water Supply and Supporting Infrastructure.

Sacramento must address:

- Drought
- Impacts of Climate Change
- Sacramento's future economic development
- Aging infrastructure
- Wildfires impacting water quality
- Changing environmental regulations
- Algal toxins, tastes and odors
- Flood and facility resiliency
- Water efficiency



Drought – Water Availability



Wildfires – Water Quality



Flood – Facilities Resiliency



New Regulations (i.e. PFAS)



Algal Toxins, Tastes and Odors



Aging Infrastructure

Solution: A Programmatic Approach

Addressing system improvements wholistically,
with thoughtful phasing of improvement implementation.



New Sacramento
River Intake



Sacramento
River Water
Treatment
Plant (SRWTP)
Resiliency &
Expansion



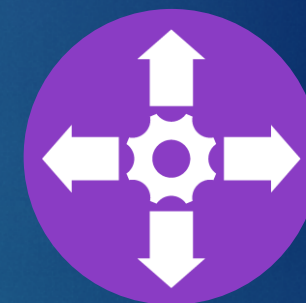
E.A. Fairbairn
Water
Treatment
Plant (FWTP)
Resiliency



Ozone
Implementation



Chlorine
Conversion



Distribution
System
Improvements

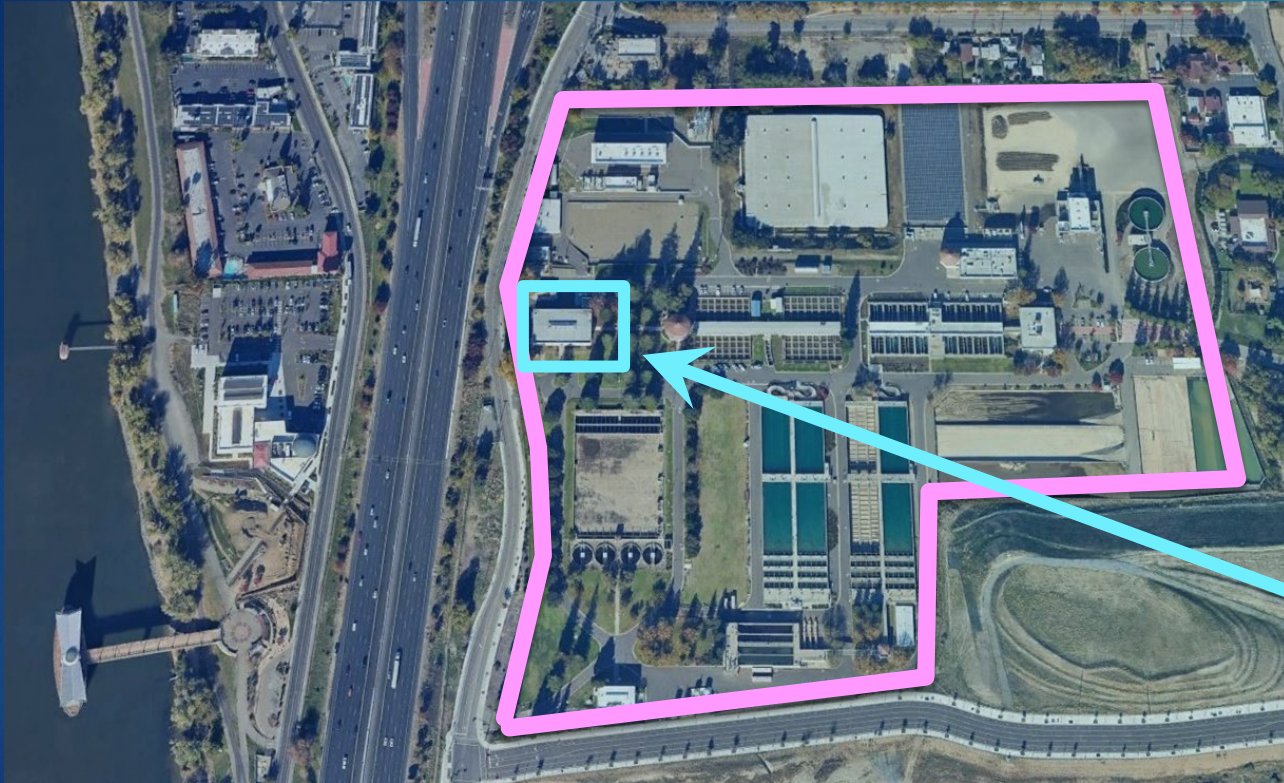
SRWTP Historical Significance

**SRWTP is a historic landmark listed on the
Sacramento Register of Historic and Cultural Resources
on February 15, 2011, by Ordinance Number 2011-011**



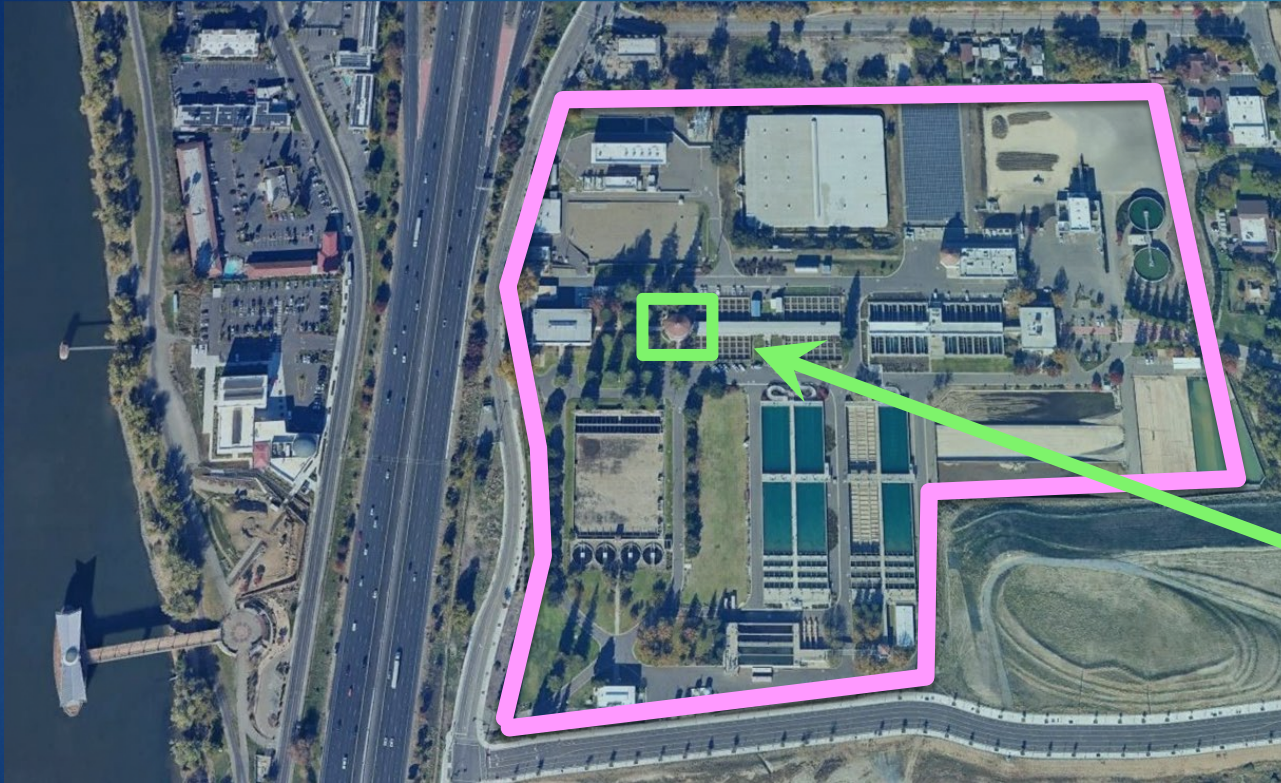
Listed Significant Features

“The Pumping Station”



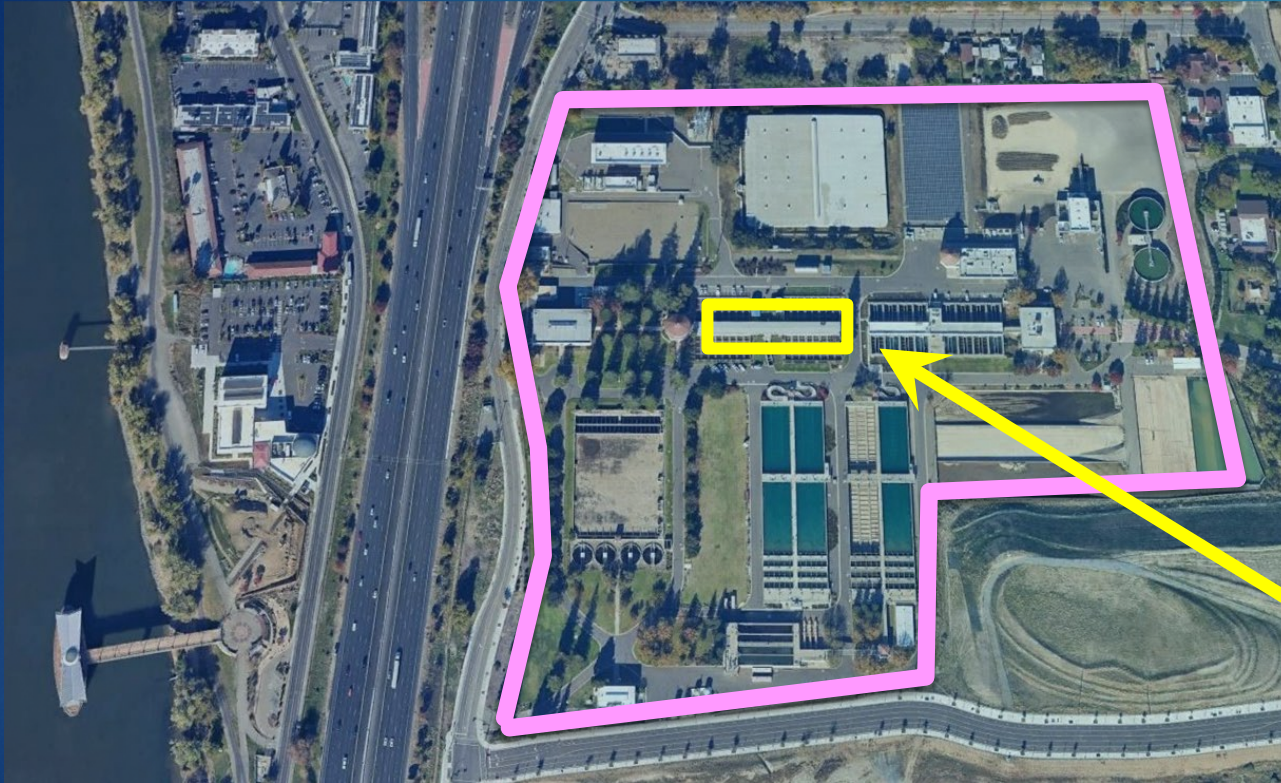
Listed Significant Features

“The Head Building (Administration Building)”



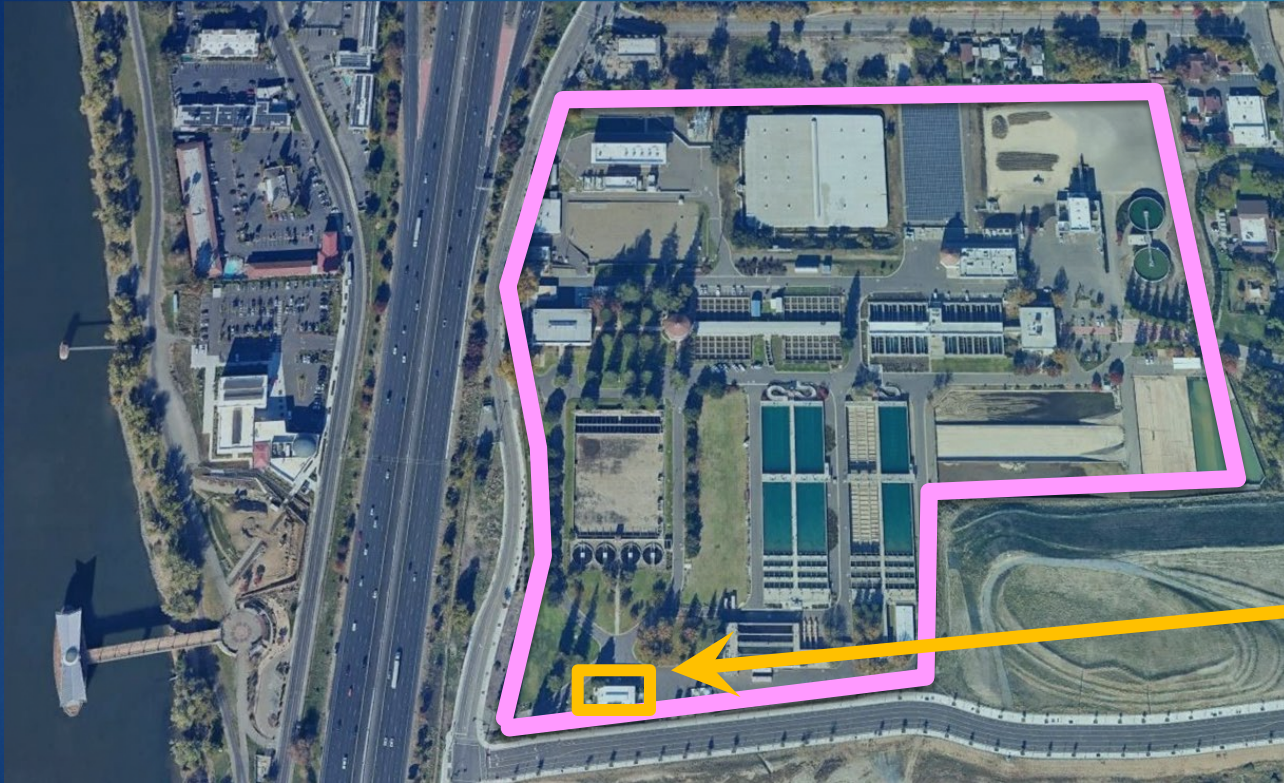
Listed Significant Features

"The Concrete Filter Building"



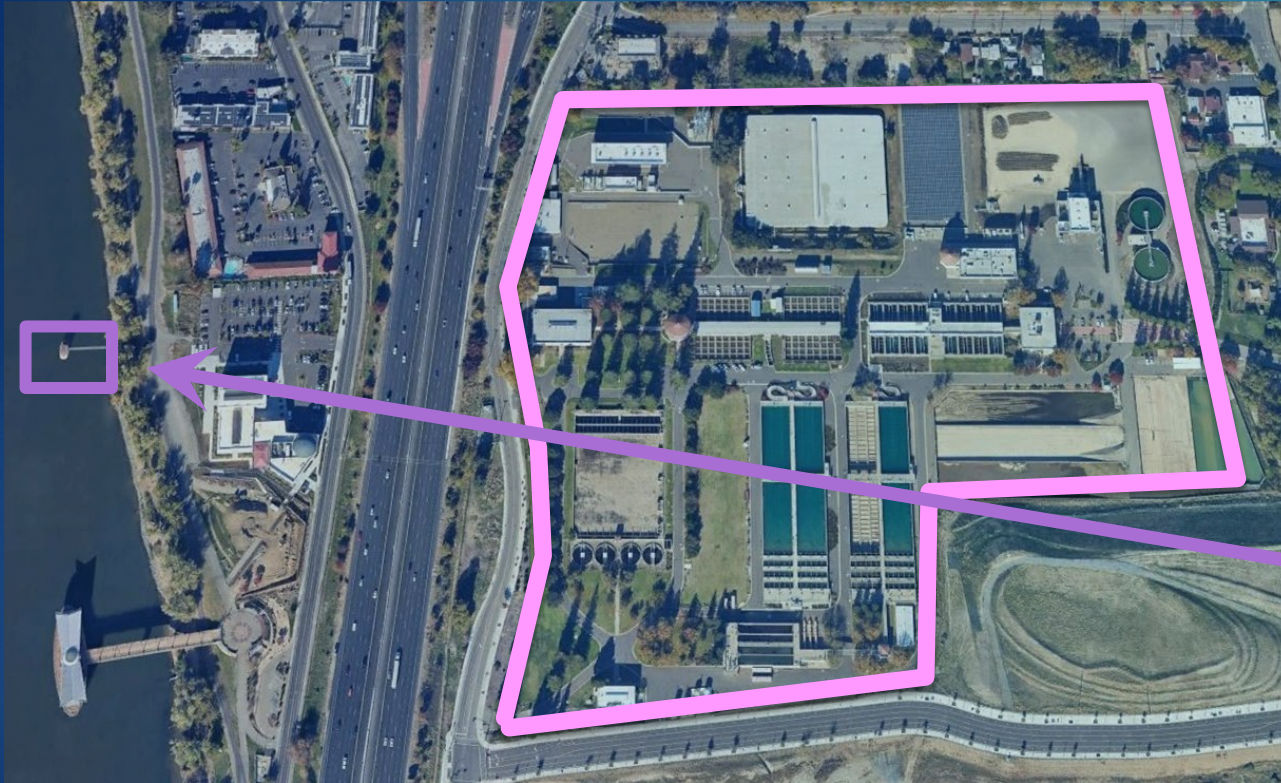
Listed Significant Features

“The Coagulant Building”



Listed Significant Features (Offsite)

“The Water Intake Structure”



Space Limitations

Existing Active Features at SRWTP



Proposed Improvements at SRWTP



Project Impacted Resources

Filters (today)



Filters (improved)





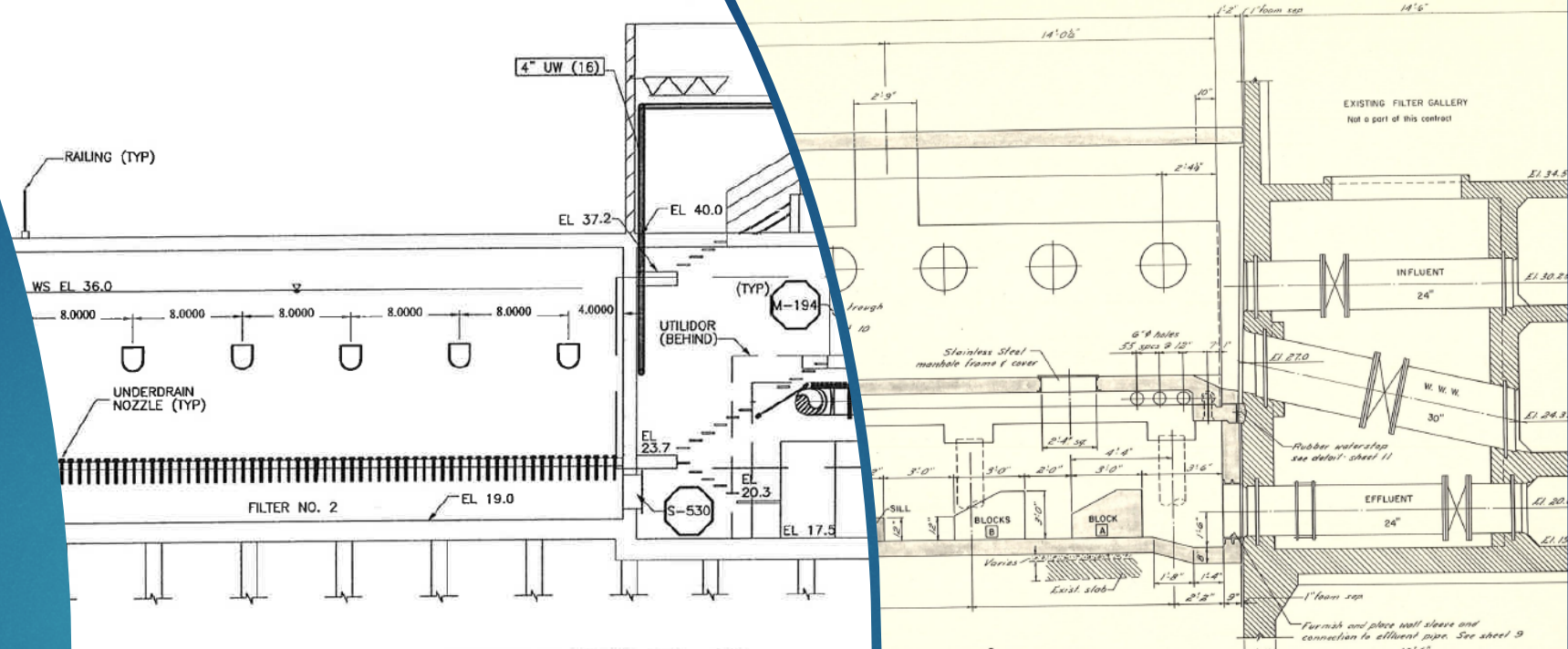
New Filters

vs.

Old Filters



What's Below the Surface



16-ft



20-ft





Head House

Common
Wall

Concrete
Filter
Building

Common
Wall

Protecting The Head House

Repairs will be consistent with the U.S. Secretary of the Interior Standards for the Treatment of Historic Properties

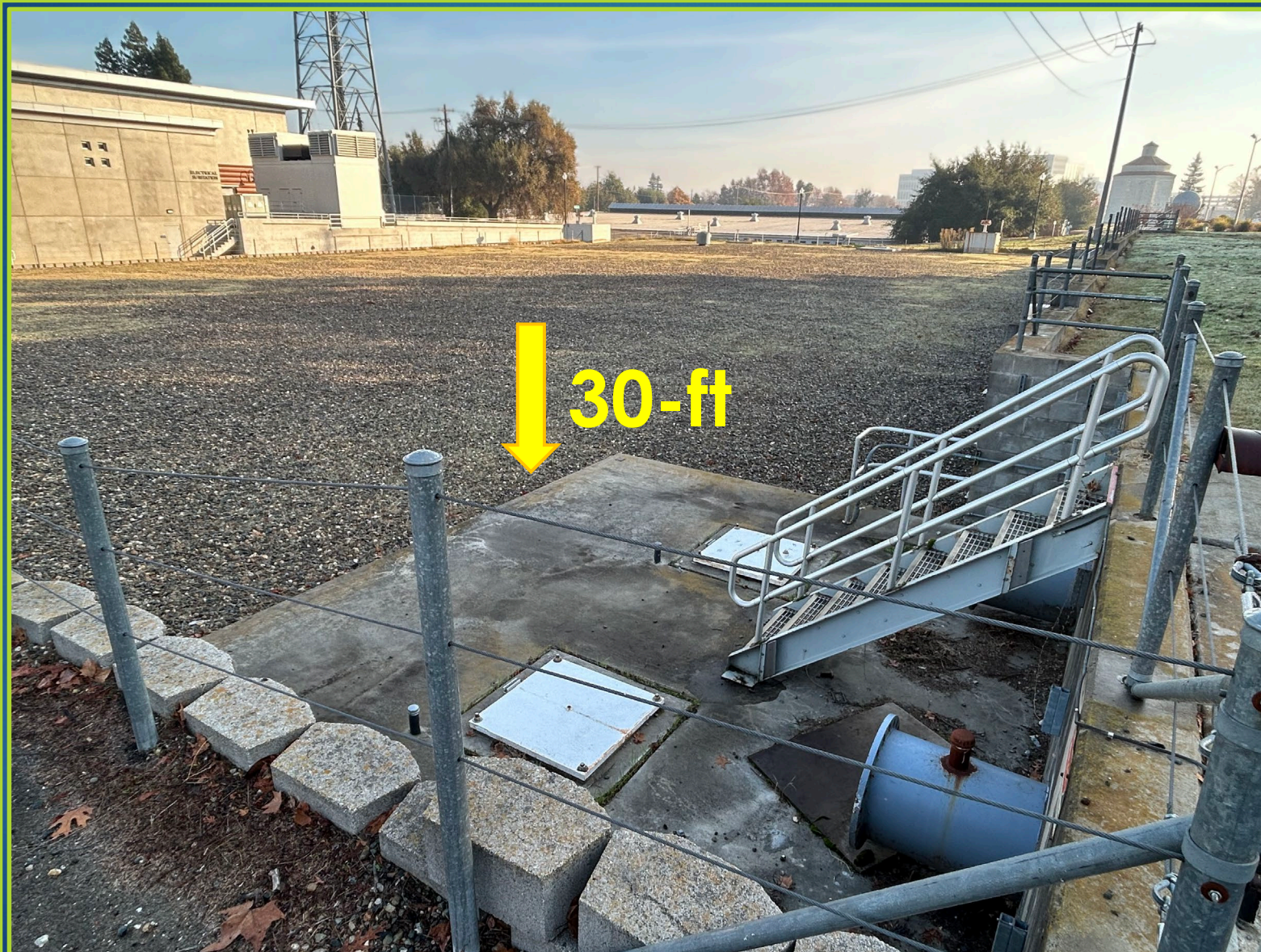
5-MG Reservoir (today)



5-MG Reservoir (improved)



5-MG Reservoir - Not A Listed Feature



Request for Preservation Commission



Recommend City Council...

- 1) Certify the Final Environmental Impact Report for the Water+ Treatment Plants Resiliency and Improvements Project;
- 2) Adopt the Findings and Statement of Overriding Considerations for significant and unavoidable impacts to historical resources; and,
- 3) To approve the Water+ Treatment Plants Resiliency and Improvements Project.



water+
SUSTAINABLE WATER
for SACRAMENTO
Any questions?